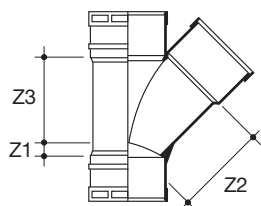
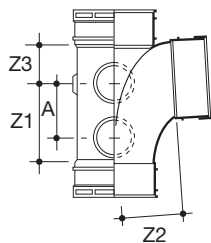
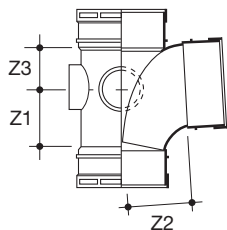
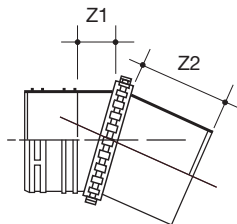
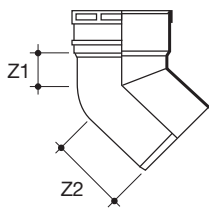
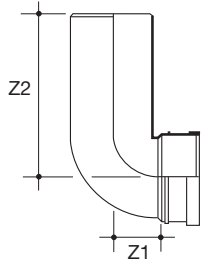


Terrain Soil System

Terrain soil system - 100 solvent-weld



Size (mm)	Angle°	Z1	Z2 (max)	Z2 (min)	Colour	Code
SPIGOT SOCKET BENDS - long tail						
82	92½	41	152	97	G	107.3.92
110	92½	57	197	110	GBW	107.4.92

Size (mm)	Angle°	Z1	Z2 (max)	Z2 (min)	Colour	Code
SPIGOT SOCKET BENDS						
110	135	42	85		GBW	107.4.135
160	135	60	130		G	107P.6.135

Size (mm)	Z1	Z2	Colour	Code
VARIABLE BEND SPIGOT/SOCKET - adjustable 0 - 25°				
110	0 - 25	45	G	107.4.025
Double spigot				
110	0 - 25	45	G	101.4.025

Size (mm)	Angle°	Z1	Z2	Z3	A	Colour	Code
SINGLE EQUAL BRANCH TRIPLE SOCKET - connect to boss horns using 117 boss adaptors (see page 21)							
82	92½	70	83	35		GBW	104.3.92
82	135	19	108	102		GB	104.3.135
110	92½	82	82	54		GBWR	104.4.92
110	92½	101	96	50	74	GBW	104.4.924
160	92½	184	178	160		G	104.6.92
With boss connections							
2 boss horns							104.3.92
3 boss horns							104.4.92
4 boss horns							104.4.924
6 boss horns							104.6.92

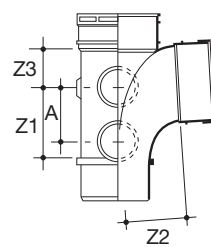
Size (mm)	Angle°	Z1	Z2	Z3	Colour	Code
SINGLE EQUAL BRANCH - no waste boss connections						
110	104	77	74	72	G	104.4.104
110	135	25	137	137	GBW	104.4.135
160	135	53	198	198*	G	104.6.135

*Push fit

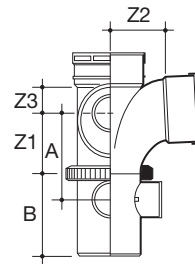
100 Solvent-Weld

Terrain soil system - 100 solvent-weld

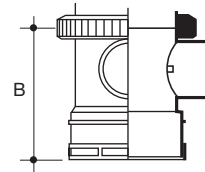
Size (mm)	Angle°	A	Z1	Z2	Z3	Colour	Code
SINGLE BRANCH SPIGOT OUTLET - with boss connections - 4 boss horns							
110	92½	74	103	96	50	GB	104.104.92



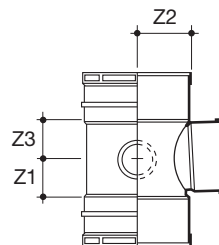
Size (mm)	Angle°	A	B	Z1	Z2	Z3	Colour	Code
SINGLE EQUAL BRANCH VARIABLE BOSS - Spigot outlet, 2 boss horns, 2 waste sockets								
110	92½	142	140	91	83	59	G	104.412.92



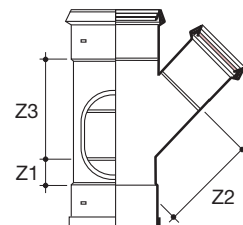
Size (mm)	Angle°	A	B	Z1	Z2	Z3	Colour	Code
SINGLE EQUAL BRANCH VARIABLE BOSS - Socket outlet								
110	92½	142	140	91	83	59	G	104.422.92



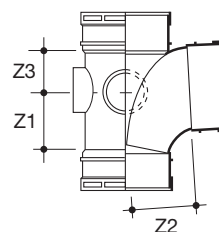
Size (mm)	Angle°	Z1	Z2	Z3	Colour	Code
SINGLE UNEQUAL BRANCH TRIPLE SOCKET - 2 boss horns						
160/110	92½	59	87	62	G	104.64.92



Size (mm)	Angle°	Z1	Z2	Z3	Colour	Code
SINGLE UNEQUAL BRANCH TRIPLE SOCKET - No waste boss connections						
160/110	135	70	173	164	G	104.64.135

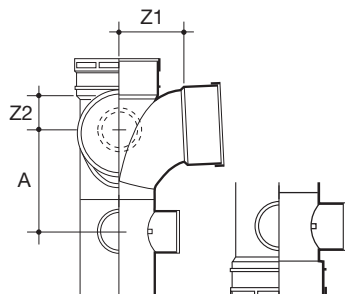


Size (mm)	Angle°	Z1	Z2	Z3	Colour	Code
CORNER BRANCH TRIPLE SOCKET - 1 boss horn						
110	92½	94	83	59	G	106.490.92



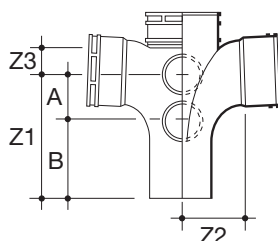
Terrain Soil System

Terrain soil system - 100 solvent-weld



Size (mm)	Angle°	A	Z1	Z2	Colour	Code
CORNER BOSS BRANCH - spigot outlet - 1 boss horn, 2 waste sockets						
110	92½	120	83	59	G	106.490.12

Size (mm)	Angle°	A	Z1	Z2	Colour	Code
CORNER BOSS BRANCH - socket outlet						
110	92½	120	83	59	G	106.490.22

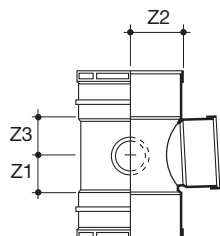


Size (mm)	Angle°	A	B	Z1	Z2	Z3	Colour	Code
DOUBLE BRANCH - spigot outlet, 4 boss horns								
110	92½	75	128	203	96	50	G	106.104.92

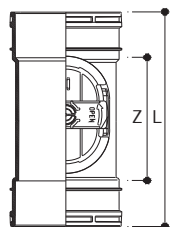


Size (mm)	Angle°	A	B	Z1	Z2	Z3	Colour	Code
DOUBLE BRANCH - socket outlet, 4 boss horns								
110	92½	74	-	138	95	50	G	106.4.92

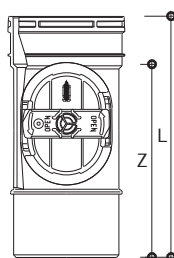
Size (mm)	Angle°	A	B	Z1	Z2	Z3	Colour	Code
DOUBLE BRANCH - no bosses								
110	35	-	-	25	137	137	G	106.4.135



Size (mm)	Angle°	Z1	Z2	Z3	Colour	Code
DOUBLE UNEQUAL BRANCH - 2 boss horns						
160/110	92½	59	87	62	G	106.64.92





Size (mm)	L	Z	Colour	Code
ACCESS PIPE DOUBLE SOCKET				
110	216	115	GBWR	138.4

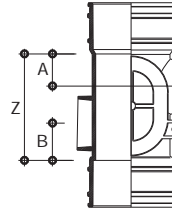




Size (mm)	L	Z	Colour	Code
ACCESS PIPE DOUBLE SOCKET				
110	216	166	GB	139.4

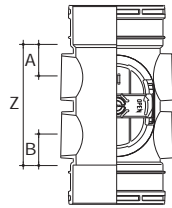
100 Solvent-Weld



Terrain soil system - 100 solvent-weld

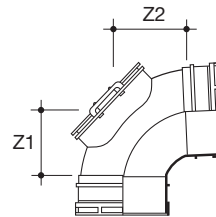
Size (mm)	A	B	Z	Colour	Code
ACCESS PIPE CONNECTOR - 2 boss horns					
 82	41	39	120	GBW	 137.3





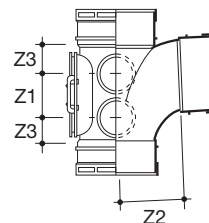
Size (mm)	A	B	Z	Colour	Code
ACCESS PIPE CONNECTOR - 4 boss horns					
 110	41	35	149	GBW	 137.4






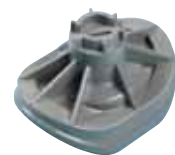
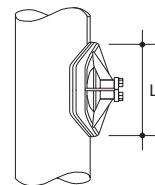
Size (mm)	Angle°	Z1	Z2	Colour	Code
ACCESS BEND DOUBLE SOCKET					
 110	92½	102	98	GBW	 103.4.92

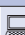




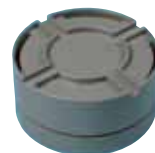
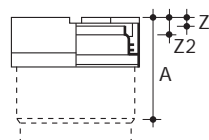
Size (mm)	Angle°	Z1	Z2	Z3	Colour	Code
SINGLE ACCESS BRANCH TRIPLE SOCKET - 4 boss horns						
 110	92½	99	96	50	GBW	 105.4.92





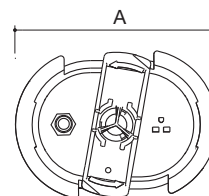
Size (mm)	L	Hole Saw Ø	Colour	Code
ACCESS DOOR				
82	114	48	G	 135.3
110	152	73	GB	 135.4
160	152	73	G	 135.6



Size (mm)	A	Z1	Z2	Colour	Code
ACCESS CAP					
83	83	16	32	GW	 136.3
110	97	21	46	GBWR	 136.4
160	122	22	42	G	 136.6

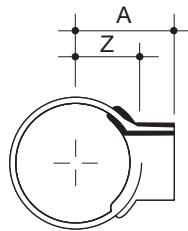
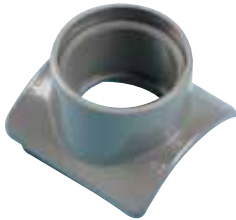


A	Colour	Code
ACCESS DOOR WITH TEST NIPPLE		
 127	GBWR	 6592/DVW



Terrain Soil System

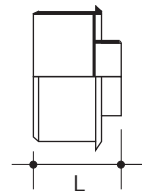
Terrain soil system - 100 solvent-weld



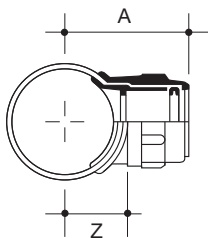
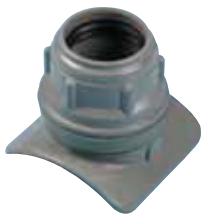
Size (mm)	A	Z	Hole Saw Ø	Colour	Code
TWO PART WASTE BOSS SOLVENT SOCKET - for 32mm waste pipe					
110/32	79	53	48	G	112.4.125

Size (mm)	A	Z	Hole Saw Ø	Colour	Code
TWO PART WASTE BOSS SOLVENT SOCKET - for 40mm waste pipe					
82/40	69	39	57	G	112.3.15
110/40	82	53	57	G	112.4.15

Size (mm)	A	Z	Hole Saw Ø	Colour	Code
TWO PART WASTE BOSS SOLVENT SOCKET - for 50mm waste pipe					
110/50	86	53	70	GW	112.4.2
160/50	110	77	70	G	112.6.2



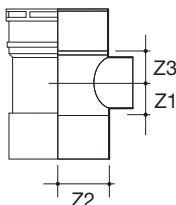
Size (mm)	L	Colour	Code
SOCKET PLUG			
110	69	GBW	130.4
160	92	G	130.6



Size (mm)	A	Z	Hole Saw Ø	Colour	Code
SELF LOCKING BOSS SEAL RING SOCKET - for 32mm waste pipe					
110/32	111	60	60	GW	122.4.125

Size (mm)	A	Z	Hole Saw Ø	Colour	Code
SELF LOCKING BOSS SEAL RING SOCKET - for 40mm waste pipe					
110/40	111	60	64	GB	122.4.15

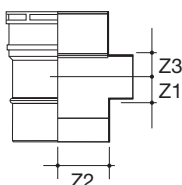
Size (mm)	A	Z	Hole Saw Ø	Colour	Code
SELF LOCKING BOSS SEAL RING SOCKET - for 50mm waste pipe					
110/50	119	60	75	GBW	122.4.2



Size (mm)	Z1	Z2	Z3	Colour	Code
SINGLE BOSSSED PIPE CONNECTOR DOUBLE SOCKET - for 32mm waste pipe					
110/32	30	56	31	GBWR	120.4.125

Size (mm)	Z1	Z2	Z3	Colour	Code
SINGLE BOSSSED PIPE CONNECTOR DOUBLE SOCKET - for 40mm waste pipe					
110/40	30	56	31	GBWR	120.4.15

Size (mm)	Z1	Z2	Z3	Colour	Code
SINGLE BOSSSED PIPE CONNECTOR DOUBLE SOCKET - for 50mm waste pipe					
110/50	30	59	31	GBW	123.4



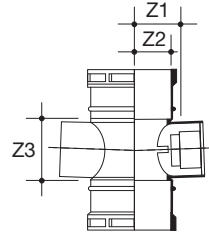
Size (mm)	Z1	Z2	Z3	Colour	Code
SINGLE BOSSSED PIPE CONNECTOR SPIGOT - for 40mm waste pipe					
110/40	28	56	27	GR	120.412.15

100 Solvent-Weld

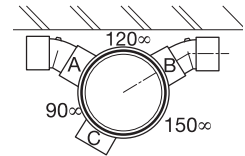
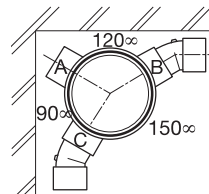
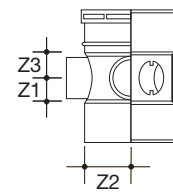
Terrain soil system - 100 solvent-weld

Size (mm)	Z1	Z2	Z3	Colour	Code
DOUBLE BOSSED PIPE CONNECTOR DOUBLE SOCKET - for 50mm waste pipes (40mm with adaptor)					
82/50	50	38	65	GB	120.3.2

2 x 50mm waste sockets, 2 blanking plugs.

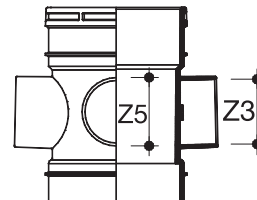


Size (mm)	Z1	Z2	Z3	Colour	Code
TRIPLE BOSSED PIPE CONNECTOR DOUBLE SOCKET					
110/40	30	56	30	GB	121.4.15



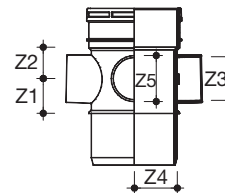
Size (mm)	Z1	Z2	Z3	Z4	Z5	Colour	Code
FOUR-WAY BOSS PIPE DOUBLE SOLVENT SOCKET							
110	44	40	56	55	59	G	120.4.2

2 boss horns, 2 waste sockets.



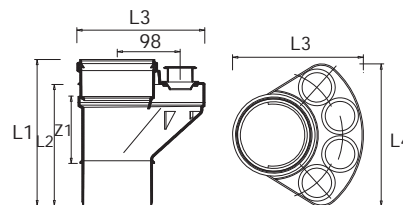
Size (mm)	Z1	Z2	Z3	Z4	Z5	Colour	Code
FOUR-WAY BOSS PIPE DOUBLE SOLVENT SOCKET/SPIGOT							
110	44	40	56	55	59	G	120.412.2

2 boss horns, 2 waste sockets.

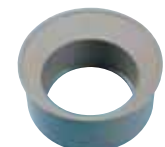
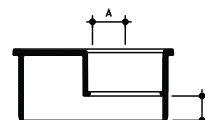


Size (mm)	L1	L2	L3	L4	Z1	Colour	Code
UNIVERSAL SOIL MANIFOLD - for solvent waste connections							
110	228	189	199	217	105	G	119.412.15

For connection of BS 5254/BS 5255 40mm waste pipes at floor level. Incorporates 4 inlets to accept 40mm waste pipes without need for adaptors. Use with Swivel Elbow or Swept Bend. For pushfit waste connections see page 21.

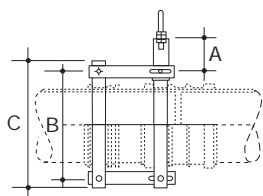


Size (mm)	A	Z	Colour	Code
UNIVERSAL SOIL MANIFOLD - for solvent waste connections				
82/50	11	3	GW	124.3.2
110/50	24	3	GBW	124.4.2
110/82	11	3	GBW	124.4.3
160/110	22	25	GW	124.6.4

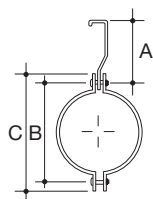


Terrain Soil System

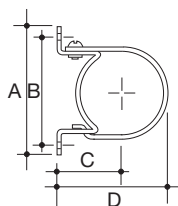
Terrain soil system - 100 solvent-weld



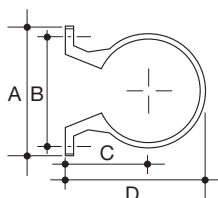
Size (mm)	A	B	C	Colour	Code
THERMAL MOVEMENT LIMITER					
82	100	129	154	Self	190.3
110	100	158	178	Self	190.4
160	100	232	260	Self	190.6



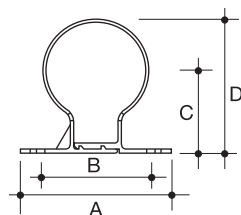
Size (mm)	A	B	C	Colour	Code
INTERMEDIATE SUPPORT BRACKET - to support horizontal pipework					
82	100	129	154	Self	191.3
110	100	158	178	Self	191.4
160	100	232	260	Self	191.6



Size (mm)	A	B	C	D	Colour	Code
TWO-PIECE PIPE BRACKET - galvanised steel						
82	140	114	76	124	Self	140.3
110	175	147	89	152	Self	140.4
160	216	196	114	197	Self	140.6

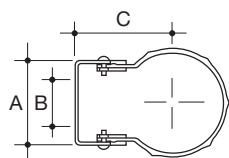


Size (mm)	A	B	C	D	Colour	Code
ONE-PIECE PIPE BRACKET						
82	132	110	76	117	GBW	143.3
110	164	141	90	155	GBWR	143.4

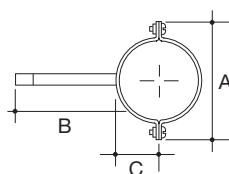


Size (mm)	A	B	C (max)	C (min)	Colour	Code
ADJUSTABLE PIPE BRACKET PLASTIC-COATED						
110	99	64	108	80	B	144.4

Both have self coloured backplates.



Size (mm)	A	B	C	Colour	Code
PIPE BRACKET GALVANISED DRIVE-IN					
110	178	152	59	Self	142.4



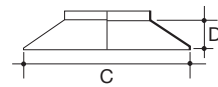
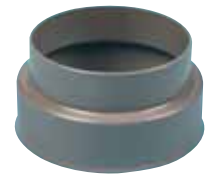
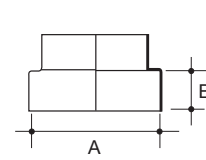
100 Solvent-Weld

Terrain soil system - 100 solvent-weld

Size (mm)	A	B	Colour	Code
WEATHERING APRON - for lead slates				
82	102	38	GB	131.3
110	128	48	GBWR	131.4
160	179	51	G	131.6

Size (mm)	C	D	Colour	Code
WEATHERING APRON - for asphalt upstand				
82	204	59	G	131.3.200
110	203	46	G	131.4.200

Makes weathertight cover between soil pipe and lead slate at roof level.

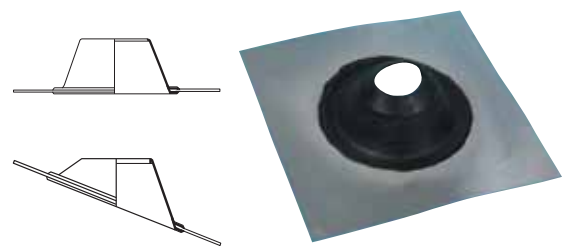


Size (mm)	Plate Size	Colour	Code
WEATHERING SLATES - for flat roof			
82 to 110	406 x 406	Alu/B	149.16.00

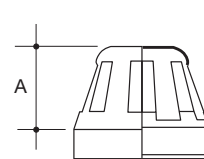
Size (mm)	Plate Size	Colour	Code
WEATHERING SLATES - for sloping roof (min 30°)			
82 to 110	406 x 406	Alu/B	149.18.22

Size (mm)	Plate Size	Colour	Code
WEATHERING SLATES - for sloping roof (min 17°)			
82 to 110	406 x 406	Alu/B	149.24.22

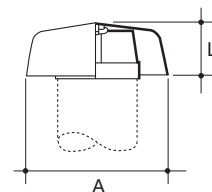
Makes weathertight cover between soil pipe and lead slate at roof level.
Available for flat or pitched roof. Colours: Base - Aluminium, Cone - Black.



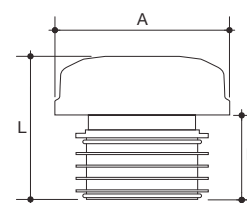
Size (mm)	A	Colour	Code
VENT COWL			
82	51	GB	150.3
110	64	GBWR	150.4
160	83	G	150.6



Size (mm)	A	L	Colour	Code
DUCT COWL - Stops rainwater from entering ventilation ducts				
110	205	80	GBR	152.4

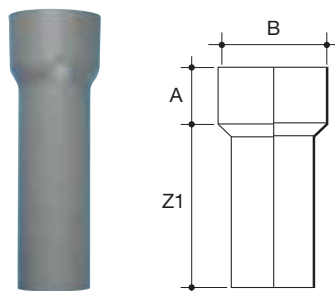
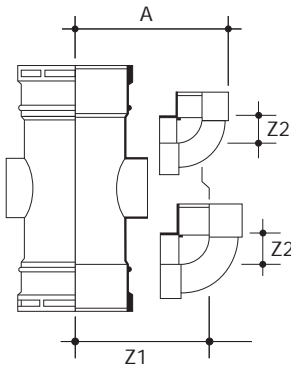
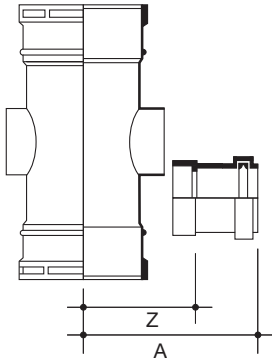


Size (mm)	A	B	L	Colour	Code
AUTOMATIC AIR ADMITTANCE VALVE					
82/110	140	70	120	W	153.3.4
AUTOMATIC AIR ADMITTANCE VALVE - polystyrene cover					153.3.41
					Self



Terrain Soil System

Terrain soil system - 100 solvent-weld



Use on Stack Size (mm)	A†	Z†	Hole Saw Ø	Colour	Code
STRAIGHT BOSS ADAPTOR RING SEAL SOCKET - for 32mm waste pipe					
82	107	61	51	GBW	117.125
110	119	74	51	GBW	117.125
160	144	99	51	GBW	117.125

Use on Stack Size (mm)	A†	Z†	Hole Saw Ø	Colour	Code
STRAIGHT BOSS ADAPTOR RING SEAL SOCKET - for 40mm waste pipe					
82	107	61	51	GBWR	117.15
110	119	74	51	GBWR	117.15
160	144	99	51	GBWR	117.15

Use on Stack Size (mm)	A†	Z†	Hole Saw Ø	Colour	Code
STRAIGHT BOSS ADAPTOR RING SEAL SOCKET - for 50mm waste pipe					
82	107	61	51	GBW	117.2
110	119	74	51	GBW	117.2
160	144	99	51	GBW	117.2

Use on Stack Size (mm)	A	Z1	Z2	Hole Saw Ø	Colour	Code
BOSS ADAPTOR BEND SOLVENT SOCKET - for 40mm waste pipe						
82	106	82	22	51	GBW	117.15.90
110	119	95	22	51	GBW	117.15.90
160	145	121	22	51	GBW	117.15.90

Use on Stack Size (mm)	A	Z1	Z2	Hole Saw Ø	Colour	Code
BOSS ADAPTOR BEND SOLVENT SOCKET - for 50mm waste pipe						
82	120	89	30	51	GBW	117.2.90
110	132	101	30	51	GBW	117.2.90
160	158	127	30	51	GBW	117.2.90
82	-	80	11	51	GBW	117.2.150
110	-	92	11	51	GBW	117.2.150
160	-	118	11	51	GBW	117.2.150

Size (mm)	L	Colour	Code
ADAPTOR TO UNDERGROUND DRAIN - push fit into bore of underground pipe			
82/110	54	B	4DW3

NOTE: As a Terrain Underground product different discount structure applies.

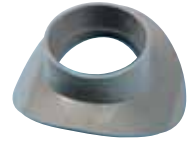
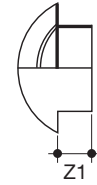
Size (mm)	A	B	Z1	Colour	Code
ADAPTOR TO CAST IRON - for 32mm waste pipe					
82	60	98	240	G	126.3.12
110	64	127	236	G	126.4.12


100 Solvent-Weld

Terrain soil system - 100 solvent-weld

Size (mm)	Z1	Colour	Code
ADAPTOR SADDLES - for 40mm waste pipes (40mm with adaptor)			
110/40	29	GR	115P.4

Used with 117 Waste Adaptors to enable direct connection of 32mm and 40mm waste pipe to soil pipe.



Size (mm)	A	B	C	Z	Colour	Code
PVC-U CAULKING BUSH						
 110	133	124	63	67	G	132.4

To connect soil pipe to sockets of other material. Solid caulked into sockets.

