

# RANGEmaster

Sinks & Taps



UNRIVALLED PERFORMANCE

# Contents

## STAINLESS STEEL SINKS

|                     |    |
|---------------------|----|
| Arlington           | 10 |
| Rockford            | 11 |
| Manhattan           | 11 |
| Keyhole             | 12 |
| Oakland             | 13 |
| Sedona              | 13 |
| Houston             | 14 |
| Michigan            | 15 |
| Baltimore           | 15 |
| Glendale            | 16 |
| Kube Undermounts    | 17 |
| Quad Undermounts    | 19 |
| Classic Undermounts | 21 |

## GRANITE SINKS

|          |    |
|----------|----|
| Mayon    | 24 |
| Mica     | 25 |
| Scoria   | 25 |
| Amethyst | 26 |
| Andesite | 26 |
| Elements | 27 |
| Cubix    | 27 |
| Lunar    | 28 |
| Paragon  | 29 |

## FIRE-CLAY CERAMIC SINKS

|                          |    |
|--------------------------|----|
| Austell                  | 32 |
| Rustic                   | 32 |
| Nevada                   | 33 |
| Portland                 | 33 |
| Farmhouse Double Belfast | 34 |
| Farmhouse Belfast        | 35 |
| Classic Double Belfast   | 36 |
| Classic Belfast          | 36 |
| Belfast                  | 36 |
| Rustique                 | 37 |

## TAPS

|                       |       |
|-----------------------|-------|
| 4-in-1 Hot Water Taps | 41    |
| Filter Taps           | 42    |
| Pull Out Taps         | 42-43 |
| Single Lever Taps     | 44    |
| Dual Lever Taps       | 45-48 |

## WASTE DISPOSAL UNITS & ACCESSORIES

|                      |    |
|----------------------|----|
| Waste Disposal Units | 49 |
| Accessories          | 49 |

# Rangemaster Quality



Our sink and tap collection is renowned for its durable build and high quality. With over 85 years experience manufacturing stainless steel sinks we are the No.1 sink manufacturer in the UK with the majority of our sinks being manufactured at our factory in Long Eaton, Nottingham.

The kitchen sink area is the most used space in the kitchen so it's vital that your chosen sink and tap is built to last in the busiest of environments.

Using the best sourced raw materials available and advanced manufacturing techniques, we design and engineer our products so that they combine functionality, durability and stylish design.

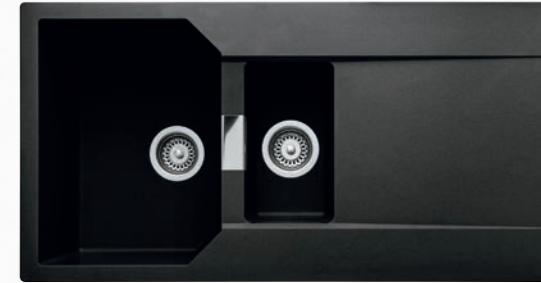
Whether you're retro-fitting or re-styling your kitchen our wide range of sinks and taps cater for all budgets and styles; from the ultra contemporary to the farmhouse-style traditional kitchen schemes.

We are confident our sinks and taps are built to last so that's why we offer a 25 year warranty on our stainless steel & granite sinks collections, 10 years warranty with our fire-clay ceramic sinks and 5 years warranty with our tap collection.

## OUR COMMITMENT TO THE ENVIRONMENT

It is testament to our reliability and commitment to the environment that Rangemaster is the proud recipient of double ISO accreditation.

BS EN ISO 9001 certifies that Rangemaster products are designed and manufactured to an internationally recognised quality management system, while BS EN 14001 acknowledges our commitment to continually improving environmental performance by adopting an approved environmental management system.



# New Products



We have added many new products in to our new brochure, look out for the **NEW** logo across our pages.



**NEW Amethyst in Dove Grey**  
Pg. 26

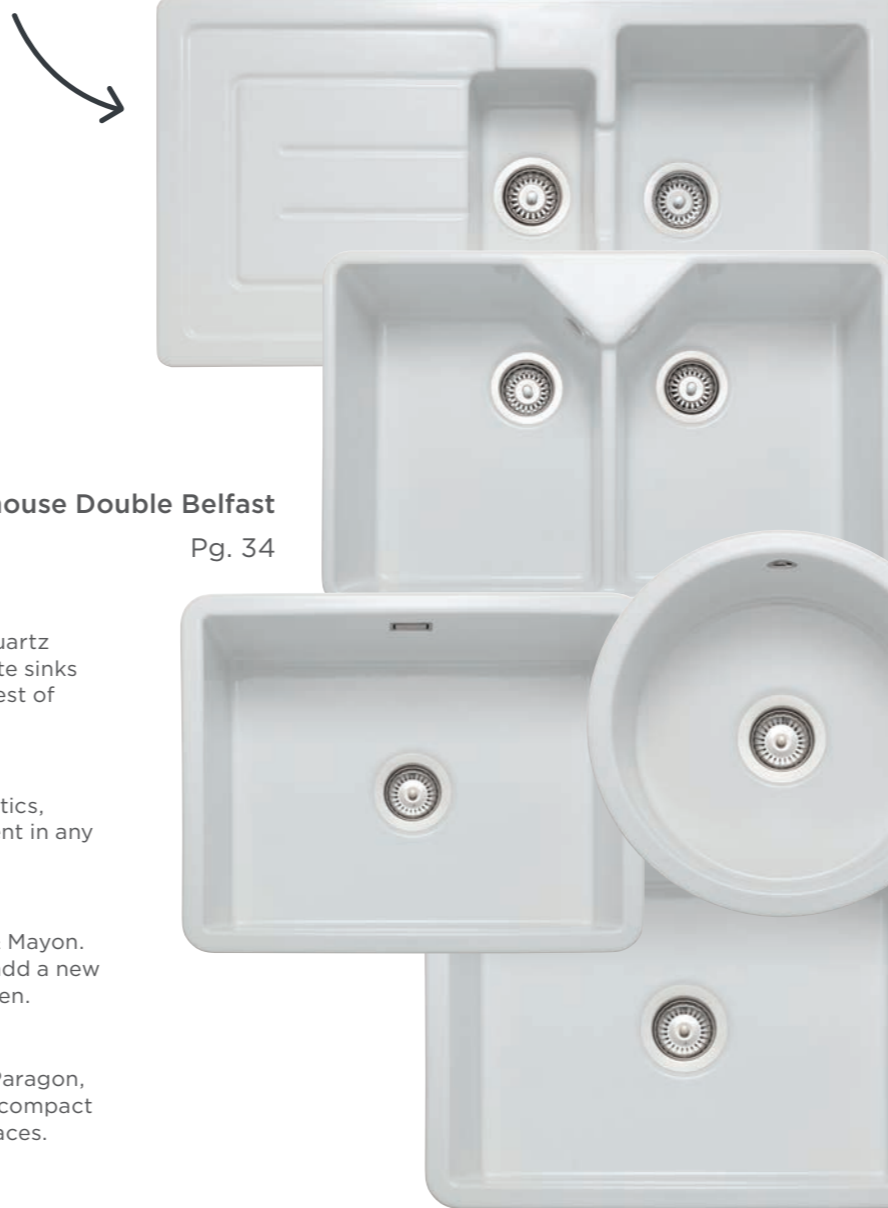


**NEW Mica Range**  
Pg. 25



**NEW Mayon Range**  
Featuring a sleek chrome overflow cover Pg. 24

**NEW Austell Range**  
Featuring straight lines and a recessed drainer Pg. 32



**NEW Farmhouse Double Belfast**  
Pg. 34

## ROCK SOLID SOLUTIONS

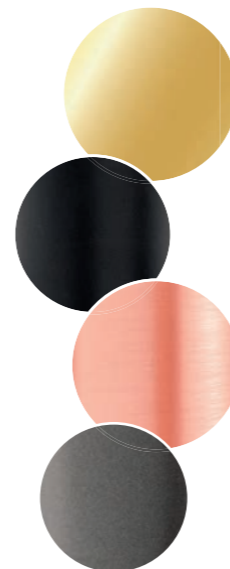
Manufactured from a patented formula of 80% quartz mixed with high-grade acrylic, our Igneous Granite sinks are literally rock solid, built to withstand the busiest of kitchens.

Combining practical solutions with design aesthetics, Igneous granite sinks create the ultimate statement in any kitchen design.

New to the collection are two new ranges, Mica & Mayon. Featuring geometric styled bowls, both options add a new design dimension to a contemporary styled kitchen.

In addition, our popular undermount collection, Paragon, has been extended with the addition of two new compact options which are ideal solutions for compact spaces.

**NEW Paragon Compact**  
Undermount bowl with short projection Pg. 29



## ADD A SPLASH OF COLOUR

Enhance your kitchen tap with a splash of colour! Introducing several new beautiful tap colour finishes which include brushed brass, brushed copper, graphite and matt black.

Manufactured from high-grade brass with high-performance ceramic disc cartridges, which are designed to deliver the perfect flow of water every time the handle is turned.

Our new finishes are available in several different collections, in a variety of different designs to suit all budgets.

**NEW Rustique Round Bowl**  
Install as an inset or undermount solution Pg. 37



**NEW Intense Range**  
Pg. 47

## STATEMENT FAVOURITES

Fire-clay ceramic sinks are still a clear favourite in the kitchen thanks to their smooth surface and high-gloss finish. With a variety of different options available including multiple different Belfast designs to choose from, fire-clay ceramic still continues to make a statement in the heart of the home.

Using only the best quality clay available which is sourced from Cornwall, UK, our fire-clay ceramic sinks are highly resistant against heat, stains and scratches - ideal for any kitchen.

New to the range is Austell, an inset collection featuring modern lines and square bowls.

Our popular Rustique collection has also been extended to include several new square bowls with the addition of a new round bowl variant, all of which can be installed as inset or undermount.

Last, but not least our Farmhouse Belfast collection has two new additions; a Double Bowl Belfast and the new ultra sleek single bowl in a new Anthracite Grey finish, a contemporary twist on a classic favourite.

# Choosing Your Sink

## MATERIAL TYPE



### STAINLESS STEEL

Remaining the most popular choice when choosing a kitchen sink, stainless steel is a robust, hygienic and hard-working solution.

**Pre-fitted Clips and Seals** – reducing installation time and ensuring a water tight seal is achieved with the work surface every time.

**Micro-Sheen™ Finish** – an enhanced soft brushed appearance combined with a polished finish which creates a durable high sheen surface.

**Ground Edge Trim** – adding an additional textural dimension, the subtle ground edge trim frames the sink beautifully.

**Waste Kit Included**

**25 Year Warranty**



### GRANITE

For a modern and contemporary look, choose a granite sink which are available in multiple different design options in an array of different colours.

**Durable Material** – resistant against knocks, scratches, heat and stains - ideal for busy family lives.

**Hygienic Surface** – a non-porous material which naturally repels microbes and stains making the sink much easier to clean.

**UV Stability** – our patent mix of raw materials protects the colouring from fading offering a fade free finish for years to come.

**Waste Kit Included**

**25 Year Warranty**



### FIRE-CLAY CERAMIC

A fire-clay ceramic sink will create the ultimate statement piece; with a wide variety of installation options available there is a design style suitable for any style of kitchen.

**Easy Clean Surface** – featuring a smooth glazed surface, fire-clay ceramic sinks are easy to clean as microbes and stains just simply wipe away.

**Superior Strength** – thanks to the high gloss glazed finish, Rangemaster ceramic sinks are highly resistant against heat, stains and scratches.

**Expanded Colour Range** – introducing the new Anthracite Grey finish now available in the Farmhouse Belfast range

**Waste Kit Included\***

**10 Year Warranty**

## INSTALLATION TYPE



### INSET

The most popular design choice, an inset kitchen sink is compatible with any choice of worktop material, however these types of sinks are a great accompaniment to laminate worktops as the pre-fitted seals included with Rangemaster sinks create the ultimate barrier against water ingress which could damage a laminate worktop over time if water were to seep through.

The added benefit of its integrated drainer offers additional food preparation space and allows washed pots to be dried effortlessly.

Inset options are available in:

- Stainless Steel
- Granite
- Fire-Clay Ceramic



### UNDERMOUNT

Choose an undermount sink for a sleek, modern and minimalist look. These sinks are installed on the underside of the work surface which extends the worktop area and offers a seamless finished look; increasing the worktop space available make these sinks an ideal solution for compact kitchen spaces.

Often paired with granite and wooden worktops, an undermount sink is a modern solution for a minimalist kitchen scheme.

Undermount options are available in:

- Stainless Steel
- Granite
- Fire-Clay Ceramic



### SIT-ON BELFAST

Create the ultimate statement piece in your kitchen with the addition of a sit-on Belfast sink, traditionally styled; these sinks complement shaker style kitchen cabinetry beautifully. If a contemporary look is preferred, there is an option of the Farmhouse Belfast in a new Anthracite Grey finish.

Featuring generous deep bowls, a sit-on Belfast sink is ideal for washing large pots and pans which can't fit into a dishwasher easily.

Sit-on options are available in:

- Fire-Clay Ceramic



# STAINLESS STEEL SINKS

## *The Durable, Resilient & Stylish Choice*

Stainless steel remains the most popular material choice when choosing a kitchen sink due to its hard wearing and long-lasting properties.

Rangemaster stainless steel sinks are all manufactured using high-grade 18/10 stainless steel, the additional nickel property included in this material grade offers a long lasting high-shine finish.

Proudly manufactured in the heart of the midlands in the UK, each sink is hand finished by our experienced craftsmen and supplied with a 25 year warranty offering you peace of mind when purchasing.

There are an array of different designs available suiting inset and undermount installations.

### KEY FEATURES



#### **FITTED CLIPS AND SEALS**

All stainless steel inset sinks are pre-fitted with clips and seals reducing installation time whilst ensuring a perfect, water-tight fit is retained with the work surface.



#### **SUBTLE GROUND EDGE TRIM**

All stainless steel inset sinks are finished with a ground edge trim which beautifully frames the sink.



#### **MICRO-SHEEN™ FINISH**

All Rangemaster stainless steel sinks feature a Micro-Sheen™ finished surface; which offers a soft brushed appearance with a polished finish, this advanced application provides a lustrous finished look whilst also enhancing the sinks resistance against heat, scratches and stains.



## ROCKFORD

The Rockford incorporates classical linear styling and features distinctive bold lines. This is a versatile sink at home in a wide range of traditional and contemporary kitchens, while also offering impeccable quality and long term durability.

- Micro-sheen™ finish
- Pre-fitted clips and seals
- Ground edge trim
- Handed drainer design
- Waste kit included



Tap shown: Quadrant Monobloc in chrome TQM1CM/

25  
YEAR  
WARRANTY

### 985 x 508mm 1 bowl sink with handed drainer

RK9851L/ - Left-hand drainer  
RK9851R/ - Right-hand drainer



Min. base unit: 600mm  
Main bowl (L x W x D): 340 x 420 x 190mm  
Waste kit: Included

### 985 x 508mm 1.5 bowl sink with handed drainer

RK9852L/ - Left-hand drainer  
RK9852R/ - Right-hand drainer



Min. base unit: 600mm  
Main bowl (L x W x D): 340 x 420 x 190mm  
Second bowl (L x W x D): 160 x 350 x 130mm  
Waste kit: Included

### Compatible Accessories

KA09/

Strainer bowl  
Stainless steel

For use with 1.5  
bowl sinks

KA20/

Draining basket  
Stainless steel



## ARLINGTON

Embracing the trend for all things geometric, featuring stylish square wastes and a smooth drainer, for a bold but streamlined addition to a contemporary kitchen scheme.

- Micro-sheen™ finish
- Pre-fitted clips and seals
- Ground edge trim
- Handed drainer design
- Large bowl design
- Square waste kit included



Tap shown: Quadrant Single Lever in chrome TQSL1CM/

25  
YEAR  
WARRANTY

### 985 x 508mm 1 bowl sink with handed drainer

AR9851L/ - Left-hand drainer  
AR9851R/ - Right-hand drainer



Min. base unit: 600mm  
Main bowl (L x W x D): 450 x 420 x 190mm  
Waste kit: Included

### 985 x 508mm 1.5 bowl sink with handed drainer

AR9852L/ - Left-hand drainer  
AR9852R/ - Right-hand drainer



Min. base unit: 600mm  
Main bowl (L x W x D): 340 x 420 x 190mm  
Second bowl (L x W x D): 160 x 350 x 130mm  
Waste kit: Included

### Compatible Accessories

WDUSQUAD/

Square waste  
adaptor:

Required when fitting  
a waste disposal unit  
with the sink

KA09/

Strainer bowl  
Stainless steel

For use with 1.5  
bowl sinks

KA20/

Draining basket  
Stainless steel



## MANHATTAN

The Manhattan combines fantastic good looks with universal appeal. A slightly larger design, this sink features a recessed drainer which prevents water spillage whilst its low profile edges provide a premium flush finished look when installed.

- Micro-sheen™ finish
- Pre-fitted clips and seals
- Ground edge trim
- Handed drainer design
- Waste kit included



Tap shown: Cruciform in brushed TCF2BF/

25  
YEAR  
WARRANTY

### 1010 x 515mm 1 bowl sink with handed drainer

MN10101L/ - Left-hand drainer  
MN10101R/ - Right-hand drainer



Min. base unit: 500mm  
Main bowl (L x W x D): 400 x 420 x 190mm  
Waste kit: Included

### 1010 x 515mm 1.5 bowl sink with handed drainer

MN10102L/ - Left-hand drainer  
MN10102R/ - Right-hand drainer



Min. base unit: 600mm  
Main bowl (L x W x D): 350 x 420 x 190mm  
Second bowl (L x W x D): 156 x 342 x 120mm  
Waste kit: Included

### Compatible Accessories

KA28/

Strainer bowl  
Stainless steel

For use with 1.5  
bowl sinks

KA12/

Draining basket  
Stainless steel

KA10/

Chopping board  
Bamboo





## OAKLAND

A modern twist on a classic design, offering a sleek and contemporary look with a lustrous Micro-Sheen™ finish.

- Micro-sheen™ finish
- Pre-fitted clips and seals
- Ground edge trim
- Handed drainer design
- Large bowl design
- Waste kit included



Tap shown: Cruciform in brushed TCF2BF/

25  
YEAR  
WARRANTY

### 985 x 508mm 1 bowl sink with handed drainer

OL9851L/ - Left-hand drainer  
OL9851R/ - Right-hand drainer



Min. base unit: 600mm  
Main bowl (L x W x D): 450 x 420 x 190mm  
Waste kit: Included

### 985 x 508mm 1.5 bowl sink with handed drainer

OL9852L/ - Left-hand drainer  
OL9852R/ - Right-hand drainer



Min. base unit: 600mm  
Main bowl (L x W x D): 360 x 424 x 170mm  
Second bowl (L x W x D): 156 x 342 x 120mm  
Waste kit: Included

### Compatible Accessories

KA28/

Strainer bowl  
Stainless steel

For use with 1.5  
bowl sinks

KA12/

Draining basket  
Stainless steel

KA10/

Chopping board  
Bamboo



## KEYHOLE

Modern, innovative and beautifully understated, the Keyhole is a truly unique concept in sink design – an example of form and function in perfect harmony. Its large, round bowl is ideal for rinsing large pans and woks, while a deep, recessed drainer provides useful additional space for food preparation, whilst also ensuring no water spills when drying items.

- Micro-sheen™ finish
- Pre-fitted clips and seals
- Ground edge trim
- Reversible drainer design
- Large bowl design
- Waste kit included



Tap shown: Aquamode in chrome TAE1CM/

25  
YEAR  
WARRANTY

## SEDONA

When practical design is more important than state-of-the-art styling. Featuring large welded bowls and a generous draining area, Sedona is the ultimate choice for any kitchen scheme.

- Micro-sheen™ finish
- Pre-fitted clips and seals
- Ground edge trim
- Reversible drainer design
- Waste kit included



Tap shown: Aspire in chrome TAI1CM/

25  
YEAR  
WARRANTY

### 1000 x 520mm 1 bowl sink with reversible drainer KY10001/



Min. base unit: 500mm  
Main bowl (L x W x D): 420 Ø x 189mm  
Waste kit: Included

### 1000 x 520mm 1.5 bowl sink with reversible drainer KY10002/



Min. base unit: 800mm  
Main bowl (L x W x D): 420 Ø x 189mm  
Second bowl (L x W x D): 156 x 300 x 120mm  
Waste kit: Included

### Compatible Accessories

KA26/

Strainer bowl  
Stainless steel

For use with 1.5  
bowl sinks



### 985 x 508mm 1 bowl sink with reversible drainer SD9851/



Min. base unit: 600mm  
Main bowl (L x W x D): 400 x 420 x 190mm  
Waste kit: Included

### 985 x 508mm 1.5 bowl sink with reversible drainer SD9852/



Min. base unit: 600mm  
Main bowl (L x W x D): 350 x 420 x 190mm  
Second bowl (L x W x D): 156 x 342 x 120mm  
Waste kit: Included

### Compatible Accessories

KA28/

Strainer bowl  
Stainless steel

For use with 1.5  
bowl sinks

KA12/

Draining basket  
Stainless steel

KA10/

Chopping board  
Bamboo





## MICHIGAN

Made from high-grade 18/10 stainless steel, the Michigan range includes the option of a compact sink, ideal solution for smaller kitchen spaces.

- Compact option available
- Micro-sheen™ finish
- Pre-fitted clips and seals
- Ground edge trim
- Reversible drainer design
- Waste kit included



25  
YEAR  
WARRANTY

Tap shown: Aquavogue in chrome TVO1CM/

**800 x 508mm 1 bowl sink with reversible drainer**  
MG8001/



Min. base unit: 450mm  
Main bowl (L x W x D): 360 x 424 x 155mm  
Waste kit: Included

**950 x 508mm 1 bowl sink with reversible drainer**  
MG9501/



Min. base unit: 500mm  
Main bowl (L x W x D): 360 x 424 x 155mm  
Waste kit: Included

**950 x 508mm 1.5 bowl sink with reversible drainer**  
MG9502/



Min. base unit: 600mm  
Main bowl (L x W x D): 360 x 424 x 155mm  
Second bowl (L x W x D): 151 x 300 x 120mm  
Waste kit: Included

## HOUSTON

The Houston sink family features an eye-catching 'waterfall' styled drainer, which promises to create a design statement in any kitchen. Both models boast welded bowls to ensure high durability, while their generous dimensions offer excellent levels of practicality for homeowners who put their sink through its paces.

- Micro-sheen™ finish
- Pre-fitted clips and seals
- Ground edge trim
- Reversible drainer design
- Waste kit included



25  
YEAR  
WARRANTY

Tap shown: Aquatrend in chrome TRE1CM/

**985 x 508mm 1 bowl sink with reversible drainer**  
HS9851/



Min. base unit: 600mm  
Main bowl (L x W x D): 400 x 420 x 190mm  
Waste kit: Included

**985 x 508mm 1.5 bowl sink with reversible drainer**  
HS9852/



Min. base unit: 600mm  
Main bowl (L x W x D): 350 x 420 x 190mm  
Second bowl (L x W x D): 156 x 342 x 125mm  
Waste kit: Included

### Compatible Accessories

KA28/  
Strainer bowl  
Stainless steel

KA12/  
Draining basket  
Stainless steel

KA10/  
Chopping board  
Bamboo

For use with 1.5 bowl sinks



## BALTIMORE

Flexible in form and function, the Baltimore family includes compact, standard single bowl and 1.5 bowl variants. Utilising a stylish "sun burst" design drainer and manufactured from high grade stainless steel the Baltimore collection hosts three quality sinks which are at home in either contemporary or traditional styled kitchens.

- Compact option available
- Micro-sheen™ finish
- Pre-fitted clips and seals
- Ground edge trim
- Reversible drainer design
- Waste kit included



25  
YEAR  
WARRANTY

Tap shown: Aquaflow in chrome TAF1CM/

**800 x 508mm 1 bowl sink with reversible drainer**  
BL8001/



Min. base unit: 450mm  
Main bowl (L x W x D): 340 x 424 x 150mm  
Waste kit: Included

**950 x 508mm 1 bowl sink with reversible drainer**  
BL9501/



Min. base unit: 600mm  
Main bowl (L x W x D): 420 x 400 x 160mm  
Waste kit: Included

**950 x 508mm 1.5 bowl sink with reversible drainer**  
BL9502/



Min. base unit: 600mm  
Main bowl (L x W x D): 340 x 410 x 160mm  
Second bowl (L x W x D): 175 x 320 x 80mm  
Waste kit: Included





## KUBE UNDERMOUNTS

With a dramatic 10mm radii defining the corners of this bowl type, the Kube undermount creates a geometric effect which will sit perfectly within streamlined cabinetry. Featuring a modern square waste and overflow, this range is available in a mix of single, 1.5 and double bowl configurations.

- Micro-sheen™ finish
- 10mm radius corners
- Waste kit included
- Hygienic overflow design



25  
YEAR  
WARRANTY

Tap shown: Quadrant Contemporary in brushed TQC1BF/

**210 x 430mm 1 bowl sink**  
KUB18/



Min. base unit: 300mm  
Main bowl (L x W x D): 180 x 400 x 140mm  
Waste kit: Included

**530 x 430mm 1 bowl sink**  
KUB50/



Min. base unit: 600mm  
Main bowl (L x W x D): 500 x 400 x 200mm  
Waste kit: Included

**740 x 430mm 1.5 bowl handed sink**  
KUB5018L/ left hand  
KUB5018R/ right-hand



Min. base unit: 800mm  
Main bowl (L x W x D): 500 x 400 x 200mm  
Second bowl (L x W x D): 180 x 400 x 140mm  
Waste kit: Included

## GLENDALE

Manufactured from high-grade stainless steel, the Glendale promises to be practical and hard working, with a 25 year warranty as standard. Offering the flexibility of a single bowl or 1.5 bowl option, the drainer takes on a bold linear design which is easy to clean and sits perfectly within a range of kitchen styles.

- Micro-sheen™ finish
- Pre-fitted clips and seals
- Ground edge trim
- Reversible drainer design
- Waste kit included



25  
YEAR  
WARRANTY

Tap shown: Aquadisc 3 in chrome TAD3CM/

**370 x 430mm 1 bowl sink**  
KUB34/



Min. base unit: 400mm  
Main bowl (L x W x D): 340 x 400 x 200mm  
Waste kit: Included

**730 x 430mm 1 bowl sink**  
KUB70/



Min. base unit: 800mm  
Main bowl (L x W x D): 700 x 400 x 200mm  
Waste kit: Included

**860 x 430mm 2 bowl sink**  
KUB4040/



Min. base unit: 900mm  
Main bowl (L x W x D): 400 x 400 x 190mm  
Second bowl (L x W x D): 400 x 400 x 190mm  
Waste kit: Included

**950 x 508mm 1 bowl sink with reversible drainer**  
GL9501/



Min. base unit: 500mm  
Main bowl (L x W x D): 360 x 424 x 155mm  
Waste kit: Included

**950 x 508mm 1.5 bowl sink with reversible drainer**  
GL9502/



Min. base unit: 600mm  
Main bowl (L x W x D): 360 x 424 x 155mm  
Second bowl (L x W x D): 156 x 342 x 120mm  
Waste kit: Included

### Compatible Accessories

KA28/ KA12/ KA10/  
Strainer bowl Stainless steel  
Draining basket Stainless steel  
Chopping board Bamboo

For use with 1.5 bowl sinks

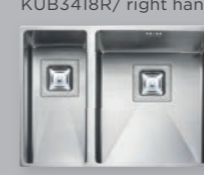


**430 x 430mm 1 bowl sink**  
KUB40/



Min. Base unit: 500mm  
Main bowl (L x W x D): 400 x 400 x 200mm  
Waste kit: Included

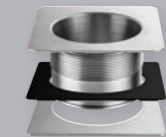
**580 x 430mm 1.5 bowl handed sink**  
KUB3418L/ left hand  
KUB3418R/ right hand



Min. Base unit: 600mm  
Main bowl (L x W x D): 340 x 400 x 190mm  
Second bowl (L x W x D): 180 x 400 x 140mm  
Waste kit: Included

### Compatible Accessories

WDUSQUAD/  
Square waste adaptor:  
required when fitting a waste  
disposal unit with sink





## QUAD UNDERMOUNTS

Made from high grade stainless steel with subtle 25mm radius corners the Quad undermount sinks also feature a modern square waste design which perfectly complements a contemporary styled kitchen scheme.

- Micro-sheen™ finish
- 25mm radius corners
- Square waste kit included
- Hygienic overflow design



Tap shown: Quadrant Contemporary in brushed TQC1BF/

**200 x 340mm 1 bowl sink**  
QUB16/



Min. base unit: 300mm  
Main bowl (L x W x D): 160 x 300 x 115mm  
Waste kit: Included

**530 x 450mm 1 bowl sink**  
QUB48/



Min. base unit: 600mm  
Main bowl (L x W x D): 480 x 400 x 195mm  
Waste kit: Included

**740 x 450mm 1.5 bowl handed sink**  
QUB4818L/ left hand  
QUB4818R/ right-hand



Min. base unit: 800mm  
Main bowl (L x W x D): 480 x 400 x 195mm  
Second bowl (L x W x D): 180 x 400 x 120mm  
Waste kit: Included

**234 x 450mm 1 bowl sink**  
QUB18/



Min. base unit: 300mm  
Main bowl (L x W x D): 180 x 400 x 120mm  
Waste kit: Included

**580 x 450mm 1.3 bowl handed sink**  
QUB3416L/ left hand  
QUB3416R/ right hand



Min. base unit: 600mm  
Main bowl (L x W x D): 340 x 400 x 185mm  
Second bowl (L x W x D): 160 x 300 x 115mm  
Waste kit: Included

**760 x 450mm 2 bowl sink**  
QUB3434/



Min. base unit: 800mm  
Main bowl (L x W x D): 340 x 400 x 185mm  
Second bowl (L x W x D): 340 x 400 x 185mm  
Waste kit: Included

**390 x 450mm 1 bowl sink**  
QUB34/



Min. base unit: 400mm  
Main bowl (L x W x D): 340 x 400 x 185mm  
Waste kit: Included

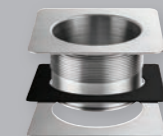
**600 x 450mm 1.5 bowl handed sink**  
QUB3418L/ left hand  
QUB3418R/ right hand



Min. base unit: 600mm  
Main bowl (L x W x D): 340 x 400 x 180mm  
Second bowl (L x W x D): 180 x 400 x 120mm  
Waste kit: Included

**Compatible Accessories**  
WDUSQUAD/

Square waste adaptor:  
required when fitting a waste  
disposal unit with sink





## CLASSIC UNDERMOUNTS

The Classic undermounts have an elegant curvature to the bowls, creating a discreet sink solution suited to any kitchen scheme. Flexibility is at the forefront of Rangemaster's undermount sinks, with the option of combining different bowl sizes to suit with the choice of handed and reversible options.

- Micro-sheen™ finish
- 65mm radius corners
- Waste kit included
- Hygienic overflow design



Tap shown: Aquaclassic 3 in chrome TAC3CM/

**185 x 370mm 1 bowl sink**  
UB15/



Min. base unit: 300mm  
Main bowl (L x W x D): 156 x 342 x 120mm  
Waste kit: Included

**490 x 460mm 1 bowl sink**  
UB45/



Min. base unit: 600mm  
Main bowl (L x W x D): 450 x 420 x 190mm  
Waste kit: Included

**671 x 460mm 1.5 bowl handed sink**  
UB4015L/ left hand  
UB4015R/ right-hand



Min. base unit: 800mm  
Main bowl (L x W x D): 420 x 400 x 190mm  
Second bowl (L x W x D): 156 x 342 x 120mm  
Waste kit: Included

**378 x 448mm 1 bowl sink**  
UB35/



Min. base unit: 400mm  
Main bowl (L x W x D): 350 x 420 x 190mm  
Waste kit: Included

**597 x 472mm 1.5 bowl reversible sink**  
UB3515/



Min. base unit: 600mm  
Main bowl (L x W x D): 350 x 420 x 190mm  
Second bowl (L x W x D): 156 x 342 x 120mm  
Waste kit: Included

**787 x 472mm 2 bowl sink**  
UB3535/



Min. base unit: 800mm  
Main bowl (L x W x D): 350 x 420 x 190mm  
Second bowl (L x W x D): 350 x 420 x 190mm  
Waste kit: Included

**460 x 440mm 1 bowl sink**  
UB40/



Min. base unit: 500mm  
Main bowl (L x W x D): 420 x 400 x 190mm  
Waste kit: Included

**597 x 472mm 1.5 bowl handed sink**  
UB3515L/ left hand  
UB3515R/ right hand



Min. base unit: 600mm  
Main bowl (L x W x D): 350 x 420 x 190mm  
Second bowl (L x W x D): 156 x 342 x 120mm  
Waste kit: Included

**945 x 460mm 2 bowl sink**  
UB4040/



Min. base unit: 1000mm  
Main bowl (L x W x D): 420 x 400 x 190mm  
Second bowl (L x W x D): 420 x 400 x 190mm  
Waste kit: Included



## *The Bold, Contemporary & Robust Choice*

Choose a granite sink for a contemporary, sleek finished look. There are two different ranges available, Igneous and Neo-Rock - both of which offer a variety of different designs and colours to choose from.

### **IGNEOUS GRANITE**



Constructed from a patented formula of 80% quartz - the toughest element of granite - and high-grade acrylic, the Igneous sink collection is literally rock solid. Its natural anti-bacterial surface repels microbes and stains which means cleaning is a dream.

### **NEO-ROCK GRANITE**

Incorporating 70% quartz particles, Neo-Rock sinks are extremely scratch resistant and resilient against high temperatures.

### **KEY FEATURES**

#### **DURABLE MATERIAL**

Resistant against knocks, scratches, stains and heat.

#### **HYGIENIC SURFACE**

Non-porous surface which repels microbes and stains making the sink much easier to clean.

#### **UV STABILITY**

Fade free colour finish for years to come.

#### **25 YEAR WARRANTY**

#### **WIDE RANGE OF COLOURS AVAILABLE**

Choose from Stone, Crystal White, Dove Grey & Ash Black

**GRANITE SINKS**





## MICA

Featuring a unique bowl design and a drainer with defined straight lines, Mica blends contemporary style with practical design effortlessly. Made from Igneous granite, the Mica range is available in 3 options; single bowl in standard and compact sizes and a 1.5 bowl option.

- Igneous granite
- Reversible drainer
- Compact option
- Waste kit included

\*Available finishes:



Tap shown: Aquatrend Single Lever in chrome TRE1SLCM/

**860 x 500mm 1 bowl sink with reversible drainer**  
MIC860\_\_/



Min. Base Unit: 500mm  
Main Bowl (L x W x D): 415 x 446 x 195mm  
Waste kit: Included

**1000 x 500mm 1 bowl sink with reversible drainer**  
MIC1051\_\_/



Min. Base Unit: 600mm  
Main Bowl (L x W x D): 484 x 443 x 195mm  
Waste kit: Included

**1000 x 500mm 1.5 bowl sink with reversible drainer**  
MIC1052\_\_/



Min. Base Unit: 600mm  
Main Bowl (L x W x D): 335 x 443 x 195mm  
Second Bowl (L x W x D): 151 x 336 x 120mm  
Waste kit: Included

## MAYON

Featuring sharp geometric bowls and a smooth drainer design, the Mayon range also features a sleek chrome branded overflow cover adding a premium finish to the overall sink design. The Mayon range is composed of 3 options; single bowl in standard and ultra compact sizes and a 1.5 bowl option.

- Igneous granite
- Reversible drainer
- Branded overflow cover
- Ultra compact option
- Waste kit included

\*Available finishes:



Tap shown: Quadrant Single Lever in chrome TQSLICM/

## SCORIA

Sleek, sophisticated styling with a tough, resistant composition; the Scorias crisp, minimalist lines make this a popular choice for the modern kitchen.

- Igneous granite
- Reversible drainer
- Waste kit included

\*Available finishes:



Tap shown: Salorno in chrome TSNICM/

**690 x 510mm 1 bowl sink with reversible drainer**  
MAY690\_\_/



Min. Base Unit: 450mm  
Main Bowl (L x W x D): 365 x 448 x 195mm  
Waste kit: Included

**1000 x 510mm 1 bowl sink with reversible drainer**  
MAY1051\_\_/



Min. Base Unit: 600mm  
Main Bowl (L x W x D): 500 x 446 x 195mm  
Waste kit: Included

**1000 x 510mm 1.5 bowl sink with reversible drainer**  
MAY1052\_\_/



Min. Base Unit: 600mm  
Main Bowl (L x W x D): 334 x 446 x 195mm  
Second Bowl (L x W x D): 167 x 296 x 120mm  
Waste kit: Included

**1000 x 500mm 1 bowl sink with reversible drainer**  
SCO1051\_\_/



Min. Base Unit: 600mm  
Main Bowl (L x W x D): 480 x 440 x 200mm  
Waste kit: Included

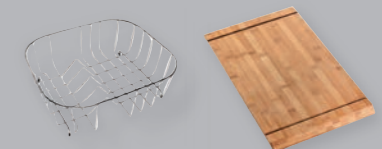
**1000 x 500mm 1.5 bowl sink with reversible drainer**  
SCO1052\_\_/



Min. Base Unit: 600mm  
Main Bowl (L x W x D): 345 x 440 x 200mm  
Second Bowl (L x W x D): 155 x 295 x 146mm  
Waste kit: Included

### Compatible Accessories

- KA12/ Draining basket Stainless steel
- KA10/ Chopping board Bamboo



## AMETHYST

The modern classic lines of this elegant trio will look equally at home in a contemporary or traditional kitchen. If space is restricted, a compact version is also available within the range.

- Igneous granite
- Reversible drainer
- Compact option
- Waste kit included

\*Available finishes:



Tap shown: Aquatrend in chrome TRE1CM/



## ELEMENTS

Elements combines style with functionality; its recessed drainer ensures water spillage is kept to a minimum, while its large square look bowls add contemporary design to your kitchen style.

- Igneous granite material
- Reversible drainer
- Waste kit included

\*Available finishes:



Tap shown: Quadrant Contemporary in chrome TRE1CM/



**860 x 500mm 1 bowl sink with reversible drainer**  
AME860\_\_/



Min. base unit: 450mm  
Main bowl (L x W x D): 348 x 422 x 204mm  
Waste kit: Included

**1000 x 500mm 1 bowl sink with reversible drainer**  
AME1051\_\_/



Min. base unit: 600mm  
Main bowl (L x W x D): 482 x 422 x 220mm  
Waste kit: Included

**1000 x 500mm 1.5 bowl sink with reversible drainer**  
AME1052\_\_/



Min. base unit: 600mm  
Main bowl (L x W x D): 341 x 422 x 204mm  
Second bowl (L x W x D): 161 x 301 x 148mm  
Waste kit: Included

**1000 x 500mm 1 bowl sink with reversible drainer**  
ELE1051\_\_/



Min. base unit: 600mm  
Main bowl (L x W x D): 480 x 420 x 180mm  
Waste kit: Included

**1000 x 500mm 1.5 bowl sink with reversible drainer**  
ELE1052\_\_/



Min. base unit: 600mm  
Main bowl (L x W x D): 380 x 420 x 180mm  
Second bowl (L x W x D): 125 x 282 x 120mm  
Waste kit: Included

**Compatible Accessories**

KA12/ Draining basket  
Stainless steel

KA10/ Chopping board  
Bamboo



## ANDESITE

Andesite encompasses a simple yet sleek drainer pattern alongside large geometric bowls, which offer a contemporary look that is at home in a range of modern kitchens. Attractive circular wastes and overflows, bold contemporary lines and low radius corners culminate into a stunning design for the trend conscious home.

- Igneous granite
- Reversible drainer
- Waste kit included

\*Available finishes:



Tap shown: Quadrant Contemporary in chrome TQC1CM/



## CUBIX

The Cubix offers a striking contemporary design with solid, practical appeal. Incorporating a large main bowl, handy second bowl and a deep drainer, the Cubix sink is ideal as a food preparation area or as a washing up station.

- Neo-rock granite material
- Waste kit included
- Reversible
- 25 Year warranty

\*Available finishes:



Tap shown: Quadrant Contemporary in chrome TQC1CM/



**1000 x 500mm 1 bowl sink with reversible drainer**  
AND1051\_\_/



Min. base unit: 600mm  
Main bowl (L x W x D): 480 x 430 x 200mm  
Waste kit: Included

**1000 x 500mm 1.5 bowl sink with reversible drainer**  
AND1052\_\_/

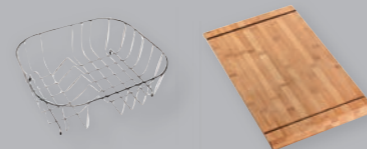


Min. base unit: 600mm  
Main bowl (L x W x D): 345 x 430 x 200mm  
Second bowl (L x W x D): 155 x 340 x 146mm  
Waste kit: Included

**Compatible Accessories**

KA12/ Draining basket  
Stainless steel

KA10/ Chopping board  
Bamboo



**985 x 508mm 1 bowl sink with reversible drainer**  
CX9851\_\_/



Min. base unit: 600mm  
Main bowl (L x W x D): 500 x 428 x 180mm  
Waste kit: Included

**985 x 508mm 1.5 bowl sink with reversible drainer**  
CX9852\_\_/



Min. base unit: 650mm  
Main bowl (L x W x D): 350 x 428 x 180mm  
Second bowl (L x W x D): 160 x 355 x 153mm  
Waste kit: Included

**Compatible Accessories**

KA12/ Draining basket  
Stainless steel

KA10/ Chopping board  
Bamboo

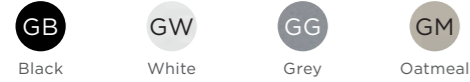


# LUNAR

Enjoy the softly curved features of the Lunar sink, its design is easier to clean as there are no tight corners to harbour food debris. Lunar also features a minimalist draining area which is precisely angled to carry away water with ease.

- Neo-rock granite material
- Waste kit included
- Reversible

\*Available finishes:



Tap shown: Quadrant Contemporary in chrome TQC1CM/

# PARAGON

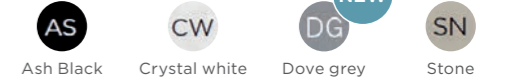
Boasting a modern geometric design, our Paragon sink is the ideal match for composite work surfaces and fits neatly within standard cabinetry.

- Igneous granite material
- Undermount installation
- Waste kit included

\*Available finishes:



Above colour finishes available with PAR4553\_\_\_/ & PAR3641\_\_\_/ sinks only



Above colour finishes available with PAR3115\_\_\_/ sink only

985 x 508mm 1 bowl sink with reversible drainer  
LU9851\_\_\_/



Min. base unit: 600mm  
Main bowl (L x W x D): 500 x 428 x 195mm  
Waste kit: Included

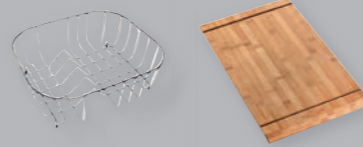
985 x 508mm 1.5 bowl sink with reversible drainer  
LU9852\_\_\_/



Min. base unit: 600mm  
Main bowl (L x W x D): 344 x 428 x 195mm  
Second bowl (L x W x D): 165 x 428 x 125mm  
Waste kit: Included

### Compatible Accessories

- KA12/ Draining basket Stainless steel
- KA10/ Chopping board Bamboo



533 x 457mm 1 bowl sink  
PAR4553\_\_\_/



Min. base unit: 600mm  
Main bowl (L x W x D): 469 x 393 x 209mm  
Waste kit: Included

824 x 481mm 2 bowl sink  
PAR3641\_\_\_/



Min. base unit: 900mm  
Main bowl (L x W x D): 362 x 395 x 241mm  
Second bowl (L x W x D): 362 x 395 x 241mm  
Waste kit: Included

550 x 430mm 1.5 bowl sink\*  
PAR3115\_\_\_/



Min. base unit: 600mm  
Main bowl (L x W x D): 310 x 370 x 200mm  
Second bowl (L x W x D): 152 x 370 x 130mm  
Waste kit: Included  
\* Sink can also be installed as inset



# PARAGON COMPACT

This new compact addition offers a shorter width which is ideal for smaller areas where space is at a premium.

- Compact size
- Igneous granite material
- Undermount Installation
- Waste kit included

\*Available finishes:



501 x 377mm 1 bowl sink  
PAR4432\_\_\_/



Min. base unit: 500mm  
Main bowl (L x W x D): 449 x 325 x 168mm  
Waste kit: Included

215 x 378mm 0.5 bowl sink  
PAR1632\_\_\_/



Min. base unit: 300mm  
Main bowl (L x W x D): 162 x 325 x 128mm  
Waste kit: Included



*The Classic  
'Statement Piece'  
Choice*

The kitchen sink is one of the most used items of your kitchen so why not add a statement piece to enhance the overall look of your space.

With the addition of a fire-clay ceramic sink you are guaranteed a sink which will retain its high gloss colour and shine for its lifetime.

Our ceramic sinks are manufactured using clay sourced from Cornwall, UK. Moulded and fired at high temperatures, our ceramic sinks are robust and hygienic thanks to the high-gloss glaze finish with each sink.

There are a choice of inset, undermount and sit-on Belfast options available in a variety of different styles. Thanks to its natural high-gloss finish, a fire-clay ceramic sink beautifully complements any style work surface.

If you are seeking a classic design with a contemporary twist then check out our new Farmhouse Belfast sink in a new anthracite grey finish - this is sure to make a bold statement in any kitchen.

**KEY FEATURES**

**EASY CLEAN SURFACE**

Thanks to its smooth glazed surface, a Rangemaster fire-clay ceramic sink is easy to clean as microbes and stains just simply wipe away.

**SUPERIOR STRENGTH**

Thanks to the high gloss glazed finish, Rangemaster ceramic sinks are highly resistant against heat, stains and scratches.

**EXPANDED COLOUR RANGE**

Introducing the new Anthracite Grey finish now available in the Farmhouse Belfast range.

**FIRE-CLAY CERAMIC SINKS**



## AUSTELL

Paying homage to where its core raw material is sourced, Cornwall UK. Austell is a robust, hard-wearing choice thanks to its inherent strength. This design features a modern recessed drainer design with bold straight lines and generous sized bowls, which are ideal for washing large pots and pans.

- Fire-clay ceramic
- Reversible drainer
- Waste kit included



10 YEAR WARRANTY

Tap shown: Aspire in chrome TAI1CM/

## NEVADA

The Nevada collection offers a unique blend of ceramic durability and ultra contemporary styling. Made from high quality fire-clay and glazed to a rich silky lustre, the Nevada is a joy to live with. With sleek bowls and a deep recessed drainer the sink is easy to clean and extremely hard wearing.

- Smooth, minimalist drainer design
- Fire-clay ceramic
- Reversible drainer
- Note: waste kits are sold separately



10 YEAR WARRANTY

Tap shown: Quadrant Contemporary in chrome TQC1CM/

1000 x 500mm 1 bowl sink with reversible drainer  
CAU10101WH/



NEW

Min. base unit: 600mm  
Main bowl (L x W x D): 449 x 415 x 190mm  
Waste kit: Included

1000 x 500mm 1.5 bowl sink with reversible drainer  
CAU10102WH/

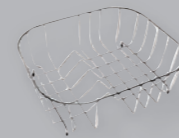


NEW

Min. base unit: 600mm  
Main bowl (L x W x D): 340 x 415 x 190mm  
Second bowl (L x W x D): 170 x 300 x 142mm  
Waste kit: Included

Compatible Accessories

KA12/  
Draining basket  
Stainless steel



1010 x 510mm 1 bowl sink with reversible drainer  
CNV1WH/



Min. Base Unit: 600mm  
Main Bowl (L x W x D): 470 x 340 x 185mm  
Waste kit: Sold separately, please order WKIT15/

1010 x 510mm 1.5 bowl sink with reversible drainer  
CNV2WH/



Min. Base Unit: 600mm  
Main Bowl (L x W x D): 350 x 340 x 190mm  
Second Bowl (L x W x D): 140 x 340 x 125mm  
Waste kit: Sold separately, please order WKIT22/

Compatible Accessories

KA12/      WKIT15/      WKIT22/  
Strainer basket      Waste kit for      Waste kit for 1.5  
Stainless steel      1 bowl sinks      bowl sinks



## RUSTIC

Rustic catches the morning light - and the eye. Offering a modern farmhouse feel, these sinks are beautifully easy to clean and fully cater for the needs of the enthusiastic chef.

- Fire-clay ceramic
- Reversible drainer
- Waste kit included



10 YEAR WARRANTY

Tap shown: Aquaclassic 2 in chrome with white handles TAC2CM/WH

## PORTLAND

Designed to sit elegantly within a variety of kitchen schemes, the charming Portland fire-clay ceramic sink bears a smooth, high gloss finish, being both easy to clean and extremely durable. A choice of single bowl or 1.5 bowl variants offers flexibility to suit your everyday use.

- Fire-clay ceramic
- Reversible drainer
- Note: waste kits are sold separately



10 YEAR WARRANTY

Tap shown: Aquatrend in chrome TRE1CM/

1000 x 500mm 1 bowl sink with reversible drainer  
CRT10101WH/



Min. base unit: 600mm  
Main bowl (L x W x D): 460 x 390 x 195mm  
Waste kit: Included

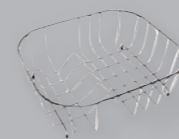
1000 x 500mm 1.5 bowl sink with reversible drainer  
CRT10202WH/



Min. base unit: 600mm  
Main bowl (L x W x D): 390 x 360 x 195mm  
Second bowl (L x W x D): 147 x 260 x 120mm  
Waste kit: Included

Compatible Accessories

KA12/  
Draining basket  
Stainless steel



1010 x 510mm 1 bowl sink with reversible drainer  
CPL10101WH/



Min. base unit: 600mm  
Main bowl (L x W x D): 460 x 400 x 195mm  
Waste kit: Sold separately, please order WKIT15/

1010 x 510mm 1.5 bowl sink with reversible drainer  
CPL10102WH/



Min. base unit: 600mm  
Main bowl (L x W x D): 350 x 410 x 195mm  
Second bowl (L x W x D): 135 x 257 x 125mm  
Waste kit: Sold separately, please order WKIT24/

Compatible Accessories

KA12/      WKIT15/      WKIT22/  
Strainer basket      Waste kit for      Waste kit for 1.5  
Stainless steel      1 bowl sinks      bowl sinks





## DOUBLE BOWL FARMHOUSE BELFAST

The ultimate statement piece in your kitchen with the addition of a beautiful double-bowl Farmhouse Belfast sink. Manufactured from high-grade fire-clay ceramic featuring ultra smooth surfaces throughout, this sink exudes luxury living at its best.

- Fire-clay ceramic
- Double bowls - ideal for washing large pots and pans
- Overflow included
- Waste kit included



Tap shown: Belfast Traditional in chrome TBL1CM/



## FARMHOUSE BELFAST

Created to seamlessly blend modern living with a traditional country kitchen, the Farmhouse Belfast is a stylish alternative to a classic design, and now available in a brand new anthracite grey finish.

- Fire-clay ceramic
- New anthracite grey finish
- Weir style overflow
- Reversible
- Waste kit included



Tap shown: Intense in brushed TID1BF/



793 x 491mm 2 bowl sit-on Belfast sink  
CFBL800WH/

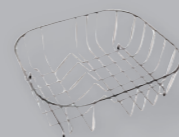


NEW

Min. Base unit: 800mm  
Main bowl (L x W x D): 366 x 450 x 195mm  
Second bowl (L x W x D): 366 x 450 x 195mm  
Overall height: 220mm  
Waste kit: Included

### Compatible Accessories

KA12/  
Draining basket  
Stainless steel



595 x 455mm 1 bowl sit-on Belfast sink - White  
CFBL595WH/



Min. base unit: 600mm  
Main bowl (L x W x D): 535 x 395 x 222mm  
Overall height: 252mm  
Waste kit: Included

595 x 455mm 1 bowl sit-on Belfast sink - Anthracite Grey  
CFBL595AN/

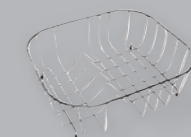


NEW

Min. base unit: 600mm  
Main bowl (L x W x D): 535 x 395 x 222mm  
Overall height: 252mm  
Waste kit: Included

### Compatible Accessories

KA12/  
Strainer basket  
Stainless steel



## CLASSIC BELFAST

There's very little that captures the true essence of a traditional British kitchen quite like a Belfast sink. Sometimes referred to as a Butler sink, the large solid design typifies the very heart of the home. Available in single bowl and double bowl options.

- Fire-clay ceramic
- Note: Waste kits are sold separately



**595 x 455mm 1 bowl sit-on Belfast sink**  
CCBL595WH/



Min. base unit: 600mm  
Main bowl (L x W x D): 525 x 385 x 215mm  
Overall Height: 250mm  
Waste kit: Sold separately, please order WKIT13/

**800 x 500mm 2 bowl sit on Belfast sink**  
CDB800WH/



Min. base unit: 800mm  
Main bowl (L x W x D): 365 x 450 x 200mm  
Second bowl (L x W x D): 365 x 450 x 200mm  
Overall Height: 220mm  
Waste kit: Sold separately, please order WKIT24/

### Compatible Accessories

KA12/  
Draining basket  
Stainless steel

WKIT13/  
Waste kit for  
1 bowl sinks

WKIT24/  
Waste kit for  
1.5 bowl sinks



## BELFAST

Choose the Belfast for a contemporary finished look; featuring a grid overflow instead of a traditional weir design, the Belfast also features a large bowl offering ample space to wash large pots and pans.

- Fire-clay ceramic
- Note: Waste kits are sold separately



**595 x 475mm 1 bowl Belfast sink**  
CBL595WH/

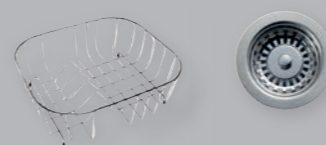


Min. base unit: 600mm  
Main bowl (L x W x D): 550 x 420 x 200mm  
Overall Height: 220mm  
Waste kit: Sold separately, please order WKIT15/

### Compatible Accessories

KA12/  
Draining basket  
Stainless steel

WKIT15/  
Waste kit for  
1 bowl sinks



## RUSTIQUE

Create a modern finished look with the addition of a Rustique fire-clay ceramic bowl. Fitted as either an inset or undermount sink, the Rustique will provide a real focal point in the kitchen and contrast excellently to all colours and finishes.

- Inset or undermount installation
- Waste kit included



**595 x 460mm 1.5 bowl sink**  
CRUB3216WH/



Min. base unit: 600mm  
Main bowl (L x W x D): 337 x 400 x 196mm  
Second bowl (L x W x D): 183 x 400 x 176mm  
Waste kit: Included

**600 x 522mm 1.3 bowl sink**  
CRUB3314WH/



Min. base unit: 650mm  
Main bowl (L x W x D): 360 x 460 x 195mm  
Second bowl (L x W x D): 162 x 300 x 175mm  
Waste kit: Included

**462 x 462mm 1 bowl sink**  
CRUB4040WH/



NEW

Min. base unit: 500mm  
Main bowl (L x W x D): 400 x 400 x 195mm  
Waste kit: Included

**598 x 462mm 1 bowl sink**  
CRUB5340WH/



NEW

Min. base unit: 650mm  
Main bowl (L x W x D): 536 x 401 x 195mm  
Waste kit: Included

**445mm Ø 1 bowl sink**  
CRUB385WH/



NEW

Min. base unit: 500mm  
Main bowl (L x W x D): 385mm Ø  
Waste kit: Included

**234 x 460mm 1 bowl sink**  
CRUB1740WH/



NEW

Min. base unit: 300mm  
Main bowl (L x W x D): 174 x 400 x 195mm  
Waste kit: Included



## KITCHEN TAPS & ACCESSORIES

### *The Finishing Touches*

Complement your kitchen sink with a Rangemaster tap, waste disposal unit and compatible accessory. Our taps and accessories have been designed to help assist with daily tasks so that cooking and cleaning are made easier.

#### TAPS

All of our taps are manufactured from high-grade brass and finished with state of the art long-lasting electrolytic coatings. A ceramic disc cartridge is also included with every tap which provides smooth handle movement and ensures the user has full control over the flow and temperature of the water.

There are a variety of designs and finishes available to choose from including filter taps, pull out taps and our state of the art 4-in-1 Geo hot water tap, which safely dispenses 98° hot water and crystal clear filtered water.

#### KEY FEATURES



##### ANTI-SPLASH SPOUT

The spout features a honeycomb aerator design which mixes air with water to emit a soft 'champagne like' water flow with no splash.



##### PULL-OUT HOSE

For ultimate food preparation and cleaning results choose a tap with a pull out hose, the majority of our designs feature a retractable hose which sits discreetly within the tap not altering its appearance from a standard tap.

##### WATER PRESSURE

The flow of water is determined from the water pressure available in your home, identifying the type of plumbing system already installed will help you choose a tap to suit your water pressure.



##### ALL PRESSURE

The majority of our taps have been designed to work with all plumbing systems, including low pressure hot water tanks. Look for the 'A' symbol opposite across our range which highlights compatibility with all water systems from 0.2 bar onwards.



##### MEDIUM PRESSURE

Some of our taps require plumbing systems with a higher bar pressure of 0.5 bar onwards, look for the 'M' symbol opposite against these types of taps.



##### HIGH PRESSURE

Taps with a 'H' symbol will require a plumbing system with 1.0 bar or higher when installing.



98° HOT WATER

4-IN-1 TAPS



Introducing  
**GEO**  
4-in-1

## WATER. EVOLVED

Rangemaster's latest addition is GEO; An evolution in 4-in-1 taps delivering domestic hot and cold, filtered cold and 98° hot.

- Consistent 98° hot water – can deliver 100 cups an hour
- Anti-splash spout
- Dual filtered cold water
- Anti-scale boiler technology
- Child safe Hotfob™
- 0.5 bar minimum operating pressure

Smart, efficient and safe; GEO offers safe dispensing of 98° water with its child safe key fob system, smart anti-scale technology for hassle free maintenance and efficiently delivers over 100 cups of perfectly filtered 98° water an hour.



FILTERED

COLD

HOT



### Geo Trend Tap

A statement piece which sits tall and complementing any kitchen style thanks to its beautiful sweeping swan neck design.

GEO43TREC/ Chrome finish  
GEO43TREBF/ Brushed finish

Tap height: 425mm  
Spout reach: 216mm  
Min. pressure: 0.5 bar



### Geo Classic Tap

A classic alternative to the Geo Trend, the Geo Classic features a curved body with subtle trim, its design will sit perfectly within a traditional styled kitchen.

GEO43CLAC/ Chrome finish  
GEO43CLAB/ Brushed finish

Tap height: 425mm  
Spout reach: 216mm  
Min. pressure: 0.5 bar

\*Replace '\_\_\_' in the tap code with your chosen colour prefix. CM - Chrome, BF - Brushed

# Filter Taps

Rangemaster's filter taps deliver crystal clear, clean water thanks to the high quality carbon filter included, which reduces impurities and delivers fresh tasting water at the push of a handle. Reduce your plastic usage by investing in a filtered tap at home, each filter cartridge will deliver 2,500 litres of water and can be easily replaced when needed.



# Pull Out Taps

Choose a kitchen tap with pull out function for ultimate food preparation and cleaning results. Thanks to its extendable hose, larger pots and pans which cannot fit easily in standard sinks can be cleaned easily. The majority of our designs feature a retractable hose which sits discreetly within the tap not altering its appearance from a standard tap.



**Pro Spray**  
Featuring an open coil design and single lever handle with jet and spray self cancelling sprayhead.

TPR1CM/ Chrome finish

Tap height: 535mm  
Spout reach: 184mm  
Min. pressure: 1.5 bar



**Aquatrend Spring**  
Sitting tall and proud, the Aquatrend Spring creates a bold statement piece in your kitchen.

TRE1SPRCM/ Chrome finish

Tap height: 528mm  
Spout reach: 188mm  
Min. pressure: 0.5 bar



**Aquatrend Pull Out**  
Featuring a unique pin handle design and dual lever control function.

TRE1POCM/ Chrome finish  
TRE1POBF/ Brushed finish

Tap height: 388mm  
Spout reach: 220mm  
Min. pressure: 1.5 bar



**Aquatrend Single Lever Pull Out**  
Featuring a unique pin handle design and single lever control function.

TRE1SLPOCM/ Chrome finish  
TRE1SLPOBF/ Brushed finish

Tap height: 390mm  
Spout reach: 220mm  
Min. pressure: 1.5 bar



**Aquaclassic Filter Tap**  
A classic design featuring white handles, the perfect addition to a traditional styled kitchen.

TSA4CM/ Chrome finish

Tap height: 392mm  
Spout reach: 216mm  
Min. pressure: 0.2 bar



**Cruciform Filter Tap**  
A modern alternative with its sweeping swan neck and contemporary handle design.

TSA5CM/ Chrome finish  
TSA5BF/ Brushed finish

Tap height: 392mm  
Spout reach: 216mm  
Min. pressure: 0.2 bar



**Aquadisc 5 Pull Out**  
Featuring a modern quad neck design, the Aquadisc 5 subtly hides its additional pull-out function within the spout design.

TAD5POCM/ Chrome finish

Tap height: 275mm  
Spout reach: 218mm  
Min. pressure: 0.75 bar



**Aquapro Pull Out**  
Clean cookware easily with the Aqua Pro Pull Out, its hose retracts neatly within the tap spout when not in use.

TAP1CM/ Chrome finish

Tap height: 285mm  
Spout reach: 210mm  
Min. pressure: 0.5 bar



**Aquaspray**  
Featuring a jet and self cancelling sprayhead, Aquaspray is ideal for directional cleaning.

TAS3CM/ Chrome finish

Tap height: 180mm  
Spout reach: 200mm  
Min. pressure: 1.5 bar

# Single Lever Taps

Operate your tap single-handed while maintaining maximum control over the temperature and flow of the water thanks to the ceramic disc cartridge included which has been designed to ensure a smooth handle operation is maintained when turned.



### Quadrant Single Lever

Contemporary design with a modern slim spout and square base design.

TQSL1CM/ Chrome  
TQSL1BF/ Brushed  
TQSL1MB/ Matt Black

Tap height: 317mm  
Spout reach: 219mm  
Min. pressure: 0.5 bar

### Quadrant Monostem 2

Uniquely designed, showcasing an ultra sleek minimalist design with a discreet handle design.

TMO2CM/ Chrome  
TMO2BF/ Brushed

Tap height: 275mm  
Spout reach: 206mm  
Min. pressure: 0.5 bar

### Aquatrend Single Lever

Aquatrend stands tall to create a focal point in your kitchen, now available in two new additional finishes.

TRE1SLCM/ Chrome  
TRE1SLBF/ Brushed  
TRE1SLMB/ Matt Black  
TRE1SLBB/ Brushed Brass

Tap height: 390mm  
Spout reach: 216mm  
Min. pressure: 0.4 bar

### Aspire

Featuring a modern flat handle and spout design for a sleek, contemporary finished look.

TAI1CM/ Chrome  
TAI1BF/ Brushed

Tap height: 365mm  
Spout reach: 231mm  
Min. pressure: 0.4 bar

### Quadrant Contemporary

Contemporary design with a modern slim spout and square base design.

TQC1CM/ Chrome  
TQC1BF/ Brushed  
TQC1MB/ Matt Black

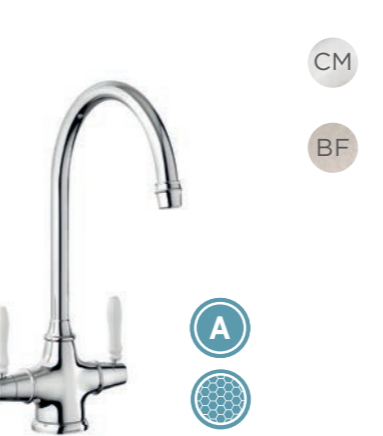
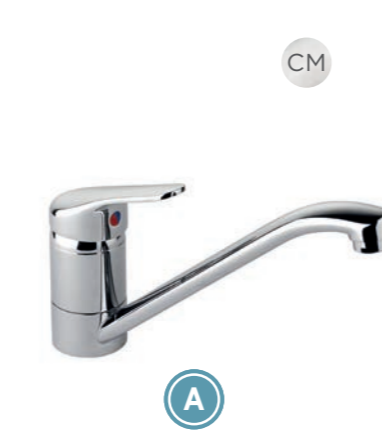
Tap height: 291mm  
Spout reach: 219mm  
Min. pressure: 0.4 bar

### Belfast Traditional

Classically designed to complement a traditional Farmhouse Belfast sink, available in two colour finishes.

TBL1CM/ Chrome  
TBL1BF/ Brushed

Tap height: 368mm  
Spout reach: 190mm  
Min. pressure: 0.1 bar



### Conical Single Lever

A uniquely shaped body paired with a square spout design which creates an ultimate modern design piece.

TCOSL1CM/ Chrome  
TCOSL1BF/ Brushed  
TCOSL1MB/ Matt Black  
TCOSL1BB/ Brushed Brass

Tap height: 294mm  
Spout reach: 212mm  
Min. pressure: 0.6 bar

### Ellipse

Featuring a tall spout with overhead lever, the Ellipse range blends contemporary style with practicality.

TEP1CM/ Chrome  
TEP1BF/ Brushed

Tap height: 277mm  
Spout reach: 185mm  
Min. pressure: 0.6 bar

### Aquaflow

A compact solution where space may be restricted.

TAF1CM/ Chrome

Tap height: 163mm  
Spout reach: 230mm  
Min. pressure: 0.2 bar

### Belfast Monobloc

The Belfast Monobloc complements Belfast style sinks perfectly thanks to its compact size and traditional styling.

TBM1CM/ Chrome  
TBM1BF/ Brushed

Tap height: 343mm  
Spout reach: 193mm  
Min. pressure: 0.3 bar

### Quadrant Monobloc

Combining a sharp square edged design with a soft curved spout for a subtle, modern look.

TQM1CM/ Chrome

Tap height: 335mm  
Spout reach: 200mm  
Min. pressure: 0.5 bar

### Conical

A uniquely shaped body paired with a square spout design which creates an ultimate modern design piece.

TCO1CM/ Chrome  
TCO1BF/ Brushed  
TCO1MB/ Matt Black  
TCO1BB/ Brushed Brass

Tap height: 294mm  
Spout reach: 212mm  
Min. pressure: 0.3 bar

# Dual Lever Taps

5 YEAR WARRANTY

5 YEAR WARRANTY



**Aquaclassic 3**  
Classically designed featuring crosshead handles and a tall sweeping neck spout.

TAC3CM/ Chrome  
TAC3BF/ Brushed

Tap height: 380mm  
Spout reach: 216mm  
Min. pressure: 0.3 bar



**Traditional Belfast Bridge**  
The Traditional Bridge mixer offers a choice of different handle finishes to perfectly complement your Belfast sink.

TBL3CM/CM Chrome - chrome handles  
TBL3CM/WH Chrome - white handles  
TBL3BF/BF Brushed - brushed handles

Tap height: 355mm  
Spout reach: 192mm  
Min. pressure: 0.3 bar



**Cruciform**  
An elegant design with minimalist styling and softened edges.

TCF2CM/ Chrome  
TCF2BF/ Brushed

Tap height: 392mm  
Spout reach: 216mm  
Min. pressure: 0.3 bar



**Estuary**  
Classically designed featuring a curvature body and tapered handle design, available in three finishes.

TES1CM/ Chrome  
TES1BF/ Brushed  
TES1BC/ Brushed Copper

Tap height: 361mm  
Spout reach: 194mm  
Min. pressure: 0.3 bar



**Aquaclassic 2**  
With the choice of multiple different handle finishes, Aquaclassic 2 can be paired with any ceramic styled sink.

TAC2CM/WH Chrome - white handles  
TAC2CM/BL Chrome - black handles  
TAC2CM/CM Chrome - chrome handles  
TAC2BF/BF Brushed - brushed handles

Tap height: 359mm  
Spout reach: 190mm  
Min. pressure: 0.3 bar



**Aquadisc 1**  
Minimalist design, Aquadisc features slim pin handles with a short neck.

TAD1CM/ Chrome

Tap height: 278mm  
Spout reach: 193mm  
Flow rate: 0.3 bar



**Aquatrend**  
A modern favourite, the Aquatrend delivers 'on-trend' styling with superb water output.

TRE1CM/ Chrome  
TRE1BF/ Brushed  
TRE1MB/ Matt Black  
TRE1BB/ Brushed Brass

Tap height: 379mm  
Spout reach: 216mm  
Min. pressure: 0.3 bar



**Aquavogue**  
Designed for the fashionista, Aquavogue is your style icon featuring a striking handle design and tall sweeping spout.

TVO1CM/ Chrome  
TVO1BF/ Brushed

Tap height: 398mm  
Spout reach: 216mm  
Min. pressure: 0.3 bar



**Parma**  
A modern, minimalist design with flair - Parma is the perfect accompaniment to any styled kitchen scheme.

TPM1CM/ Chrome  
TPM1BF/ Brushed

Tap height: 389mm  
Spout reach: 216mm  
Min. pressure: 0.3 bar



**Aquamode**  
Boasting a unique handle design and geometrically designed body.

TAE1CM/ Chrome

Tap height: 353mm  
Spout reach: 190mm  
Min. pressure: 0.3 bar



**Intense**  
If striking design is what you seek, the Intense tap delivers this, featuring a tall sweeping neck and available in 5 colours.

TID1CM/ Chrome  
TID1BF/ Brushed  
TID1BC/ Brushed Copper  
TID1MB/ Matt Black  
TID1GR/ Graphite

Tap height: 398mm  
Spout reach: 216mm  
Min. pressure: 0.5 bar



**Monorise**  
A popular favourite, Monorise features slim pin handles for a minimalist, subtle finished look.

TMR1CM/ Chrome  
TMR1BF/ Brushed

Tap height: 363mm  
Spout reach: 194mm  
Min. pressure: 0.5 bar



# Dual Lever Taps



## Aquaquad

Modern in design with a quad style neck and tabbed handles, the Aquaquad is available in four finishes.

TAQ2CM/ Chrome  
TAQ2BF/ Brushed  
TAQ2MB/ Matt Black  
TAQ2BB/ Brushed Brass

Tap height: 310mm  
Spout reach: 192mm  
Min. pressure: 0.4 bar



## Aquadisc 5

Featuring easy operable handles and a straight spout design, the Aquadisc 5 is a modern favourite.

TAD5CM/ Chrome finish

Tap height: 277mm  
Spout reach: 212mm  
Min. pressure: 0.3 bar



## Aquadisc 3

Classically designed, the Aquadisc 3 includes round handles and a low height spout, great for compact spaces.

TAD3CM/ Chrome finish  
TAD3BF/ Brushed finish

Tap height: 210mm  
Spout reach: 210mm  
Min. pressure: 0.2 bar



## Salorno

Subtly designed to suit any style of kitchen, featuring easy to use paddle handles with a low square neck design.

TSN1CM/ Chrome finish  
TSN1BF/ Brushed finish

Tap height: 232mm  
Spout reach: 207mm  
Min. pressure: 0.4 bar



## Aquavibe

A classic favourite with pin handle design and short sweeping neck.

TVB1CM/ Chrome finish  
TVB1BF/ Brushed finish

Tap height: 287mm  
Spout reach: 214mm  
Min. pressure: 0.2 bar

# Waste disposal units

Clean, hygienic and safe to use, all Rangemaster waste disposal units are easy to install and compatible with all of our sinks. With a wide choice of different options available all of which include the following features:

- **Bio Shield Antimicrobial Protection** - a hygienic agent which inhibits the growth of a wide range of micro organisms and provides protection against odours.
- **Turntable Operation** - no knives or blades are used thanks to the turntable included which uses generated centrifugal force to hurl waste against the grinding ring which shreds the waste into fine pieces.
- **Torque Master** - a balanced grinding system which provides superior torque speed with less vibration and noise providing a longer life system.
- **Sound Shell** - protected with an outer shell which reduces noise levels when the waste disposal unit is in operation.
- **Continuous Feed Function** - mains operated controlled by a switch.



## Economy 500

Suitable for small households.

WDU500/  
2 year guarantee



## Standard 700

Suitable for small to medium households.

WDU700/  
3 year guarantee



## Mid Duty 750

Suitable for large households.

WDU750/  
3 year guarantee

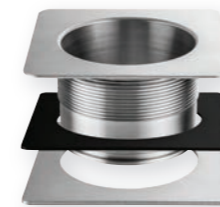


## Heavy Duty 800

Suitable for large & busy households.

WDU800/  
4 year guarantee

# Sink accessories



## Square Waste Adaptor

To be used with waste disposal units on Arlington, Kube & Quad sinks.

WDUSQUAD/



## Strainer Basket

Compatible with all sinks  
Stainless steel

KA12/



## Chopping Board

Bamboo

KA10/



## Strainer Bowl

Stainless Steel

KA26/ (A)  
KA28/ (A)  
KA09/ (B)

## STAINLESS STEEL INSET SINKS

|                         | Arlington AR9851_/_ | Arlington AR9852_/_ | Baltimore BL8001/_ | Baltimore BL9501/_ | Baltimore BL9502/_ | Glendale GL9501/_ | Glendale GL9502/_ | Houston HS9851/_ | Houston HS9852/_ | Keyhole KY10001/_ |
|-------------------------|---------------------|---------------------|--------------------|--------------------|--------------------|-------------------|-------------------|------------------|------------------|-------------------|
| Drainer Position        | Handed              | Handed              | Reversible         | Reversible         | Reversible         | Reversible        | Reversible        | Reversible       | Reversible       | Reversible        |
| No. of Bowls            | 1                   | 1½                  | 1                  | 1                  | 1½                 | 1                 | 1½                | 1                | 1½               | 1                 |
| Min. Base Unit (mm)     | 600                 | 600                 | 450                | 600                | 600                | 500               | 600               | 600              | 600              | 500               |
| Overall Length (mm)     | 985                 | 985                 | 800                | 950                | 950                | 950               | 950               | 985              | 985              | 1000              |
| Overall Width (mm)      | 508                 | 508                 | 508                | 508                | 508                | 508               | 508               | 508              | 508              | 520               |
| Cutout Size Length (mm) | 965                 | 965                 | 780                | 930                | 930                | 930               | 930               | 965              | 965              | 980               |
| Cutout Size Width (mm)  | 488                 | 488                 | 488                | 488                | 488                | 488               | 488               | 488              | 488              | 500               |
| Main Bowl Length (mm)   | 450                 | 340                 | 340                | 420                | 340                | 360               | 360               | 400              | 350              | 420 Ø             |
| Main Bowl Width (mm)    | 420                 | 420                 | 424                | 400                | 410                | 424               | 424               | 420              | 420              | 420 Ø             |
| Main Bowl Depth (mm)    | 190                 | 190                 | 150                | 160                | 160                | 155               | 155               | 190              | 190              | 189               |
| Second Bowl Length (mm) | -                   | 160                 | -                  | -                  | 175                | -                 | 156               | -                | 156              | -                 |
| Second Bowl Width (mm)  | -                   | 350                 | -                  | -                  | 320                | -                 | 342               | -                | 342              | -                 |
| Second Bowl Depth (mm)  | -                   | 130                 | -                  | -                  | 80                 | -                 | 120               | -                | 120              | -                 |
| Material                | 18/10 SS            | 18/10 SS            | 18/10 SS           | 18/10 SS           | 18/10 SS           | 18/10 SS          | 18/10 SS          | 18/10 SS         | 18/10 SS         | 18/10 SS          |
| Gauge (mm)              | 0.9                 | 0.9                 | 0.7                | 0.7                | 0.8                | 0.7               | 0.7               | 0.9              | 0.9              | 0.9               |
| Finish Drainer          | Micro-Sheen         | Micro-Sheen         | Micro-Sheen        | Micro-Sheen        | Micro-Sheen        | Micro-Sheen       | Micro-Sheen       | Micro-Sheen      | Micro-Sheen      | Micro-Sheen       |
| Finish Bowl             | Micro-Sheen         | Micro-Sheen         | Micro-Sheen        | Micro-Sheen        | Micro-Sheen        | Micro-Sheen       | Micro-Sheen       | Micro-Sheen      | Micro-Sheen      | Micro-Sheen       |
| Waste Size Ø (mm)       | 1 x 90 square       | 2 x 90 square       | 1 x 89             | 1 x 89             | 2 x 89             | 1 x 89            | 2 x 89            | 1 x 89           | 2 x 89           | 1 x 89            |
| Waste Kit               | BSW                 | BSW                 | BSW                | BSW                | BSW                | BSW               | BSW               | BSW              | BSW              | BSW               |
| Tap Hole Size Ø (mm)    | 1 x 35              | 1 x 35              | 1 x 35             | 1 x 35             | 1 x 35             | 1 x 35            | 1 x 35            | 1 x 35           | 1 x 35           | -                 |
| Guarantee (years)       | 25                  | 25                  | 25                 | 25                 | 25                 | 25                | 25                | 25               | 25               | 25                |

| Keyhole KY10002/_ | Manhattan MN10101_/_ | Manhattan MN10102_/_ | Michigan MG8001/_ | Michigan MG9501/_ | Michigan MG9502/_ | Oakland OL9851_/_ | Oakland OL9852_/_ | Rockford RK9851_/_ | Rockford RK9852_/_ | Sedona SD9851/_ | Sedona SD9852/_ |
|-------------------|----------------------|----------------------|-------------------|-------------------|-------------------|-------------------|-------------------|--------------------|--------------------|-----------------|-----------------|
| Reversible        | Handed               | Handed               | Reversible        | Reversible        | Reversible        | Handed            | Handed            | Handed             | Handed             | Reversible      | Reversible      |
| 1½                | 1                    | 1½                   | 1                 | 1                 | 1½                | 1                 | 1½                | 1                  | 1½                 | 1               | 1½              |
| 800               | 500                  | 600                  | 450               | 500               | 600               | 600               | 600               | 600                | 600                | 600             | 600             |
| 1000              | 1010                 | 1010                 | 800               | 950               | 950               | 985               | 985               | 985                | 985                | 985             | 985             |
| 520               | 515                  | 515                  | 508               | 508               | 508               | 508               | 508               | 508                | 508                | 508             | 508             |
| 980               | 990                  | 990                  | 780               | 930               | 930               | 965               | 965               | 965                | 965                | 965             | 965             |
| 500               | 495                  | 495                  | 488               | 488               | 488               | 488               | 488               | 488                | 488                | 488             | 488             |
| 420 Ø             | 400                  | 350                  | 360               | 360               | 360               | 450               | 360               | 340                | 340                | 400             | 350             |
| 420 Ø             | 420                  | 420                  | 424               | 424               | 424               | 420               | 424               | 420                | 420                | 420             | 420             |
| 189               | 190                  | 190                  | 155               | 155               | 155               | 190               | 170               | 190                | 190                | 190             | 190             |
| 156               | -                    | 156                  | -                 | -                 | 156               | -                 | 156               | -                  | 160                | -               | 156             |
| 300               | -                    | 342                  | -                 | -                 | 300               | -                 | 342               | -                  | 350                | -               | 342             |
| 120               | -                    | 120                  | -                 | -                 | 120               | -                 | 120               | -                  | 130                | -               | 120             |
| 18/10 SS          | 18/10 SS             | 18/10 SS             | 18/10 SS          | 18/10 SS          | 18/10 SS          | 18/10 SS          | 18/10 SS          | 18/10 SS           | 18/10 SS           | 18/10 SS        | 18/10 SS        |
| 0.9               | 0.9                  | 0.9                  | 0.7               | 0.7               | 0.7               | 0.9               | 0.9               | 0.9                | 0.9                | 0.9             | 0.9             |
| Micro-Sheen       | Micro-Sheen          | Micro-Sheen          | Micro-Sheen       | Micro-Sheen       | Micro-Sheen       | Micro-Sheen       | Micro-Sheen       | Micro-Sheen        | Micro-Sheen        | Micro-Sheen     | Micro-Sheen     |
| Micro-Sheen       | Micro-Sheen          | Micro-Sheen          | Micro-Sheen       | Micro-Sheen       | Micro-Sheen       | Micro-Sheen       | Micro-Sheen       | Micro-Sheen        | Micro-Sheen        | Micro-Sheen     | Micro-Sheen     |
| 2 x 89            | 1 x 89               | 2 x 89               | 1 x 89            | 1 x 89            | 2 x 89            | 1 x 89            | 2 x 89            | 1 x 89             | 2 x 89             | 1 x 89          | 2 x 89          |
| BSW               | BSW                  | BSW                  | BSW               | BSW               | BSW               | BSW               | BSW               | BSW                | BSW                | BSW             | BSW             |
| -                 | 1 x 35               | 1 x 35               | 1 x 35            | 1 x 35            | 1 x 35            | 1 x 35            | 1 x 35            | 1 x 35             | 1 x 35             | 1 x 35          | 1 x 35          |
| 25                | 25                   | 25                   | 25                | 25                | 25                | 25                | 25                | 25                 | 25                 | 25              | 25              |

## STAINLESS STEEL UNDERMOUNT SINKS

|                         | Classic UB15/_ | Classic UB35/_ | Classic UB3515_/_    | Classic UB3535/_ | Classic UB40/_ | Classic UB45/_ | Classic UB4015_/_ | Classic UB4040/_ | Kube KUB18/_  | Kube KUB34/_  |
|-------------------------|----------------|----------------|----------------------|------------------|----------------|----------------|-------------------|------------------|---------------|---------------|
| Drainer Position        | -              | -              | Reversible or Handed | -                | -              | -              | Handed            | -                | -             | -             |
| No. of Bowls            | 1              | 1              | 1½                   | 2                | 1              | 1              | 1½                | 2                | 1             | 1             |
| Min. Base Unit (mm)     | 300            | 400            | 600                  | 800              | 500            | 600            | 800               | 1000             | 300           | 400           |
| Overall Length (mm)     | 185            | 378            | 597                  | 787              | 460            | 490            | 671               | 945              | 210           | 370           |
| Overall Width (mm)      | 370            | 448            | 472                  | 472              | 440            | 460            | 460               | 460              | 430           | 430           |
| Cutout Size Length (mm) | -              | -              | -                    | -                | -              | -              | -                 | -                | -             | -             |
| Cutout Size Width (mm)  | -              | -              | -                    | -                | -              | -              | -                 | -                | -             | -             |
| Main Bowl Length (mm)   | 156            | 350            | 350                  | 350              | 420            | 450            | 420               | 420              | 180           | 340           |
| Main Bowl Width (mm)    | 342            | 420            | 420                  | 420              | 400            | 420            | 400               | 400              | 400           | 400           |
| Main Bowl Depth (mm)    | 120            | 190            | 190                  | 190              | 190            | 190            | 190               | 190              | 140           | 200           |
| Second Bowl Length (mm) | -              | -              | 156                  | 350              | -              | -              | 156               | 420              | -             | -             |
| Second Bowl Width (mm)  | -              | -              | 342                  | 420              | -              | -              | 342               | 400              | -             | -             |
| Second Bowl Depth (mm)  | -              | -              | 120                  | 190              | -              | -              | 120               | 190              | -             | -             |
| Material                | 18/10 SS       | 18/10 SS       | 18/10 SS             | 18/10 SS         | 18/10 SS       | 18/10 SS       | 18/10 SS          | 18/10 SS         | 18/10 SS      | 18/10 SS      |
| Gauge (mm)              | 0.8            | 0.8            | 0.9                  | 0.9              | 0.9            | 0.9            | 0.9               | 0.9              | 1.0           | 1.0           |
| Finish Drainer          | -              | -              | -                    | -                | -              | -              | -                 | -                | -             | -             |
| Finish Bowl             | Micro-Sheen    | Micro-Sheen    | Micro-Sheen          | Micro-Sheen      | Micro-Sheen    | Micro-Sheen    | Micro-Sheen       | Micro-Sheen      | Micro-Sheen   | Micro-Sheen   |
| Waste Size Ø (mm)       | 1 x 89         | 1 x 89         | 2 x 89               | 2 x 89           | 1 x 89         | 1 x 89         | 2 x 89            | 2 x 89           | 1 x 90 square | 1 x 90 square |
| Waste Kit               | BSW            | BSW            | BSW                  | BSW              | BSW            | BSW            | BSW               | BSW              | BSW           | BSW           |
| Tap Hole Size Ø (mm)    | -              | -              | -                    | -                | -              | -              | -                 | -                | -             | -             |
| Guarantee (years)       | 25             | 25             | 25                   | 25               | 25             | 25             | 25                | 25               | 25            | 25            |

| Kube KUB3418_/_ | Kube KUB40/_  | Kube KUB50/_  | Kube KUB70/_  | Kube KUB4040/_ | Kube KUB5018_/_ | Quad QUB16/_  | Quad QUB18/_  | Quad QUB34/_  | Quad QUB3434/_ | Quad QUB48/_  | Quad QUB3416_/_ |
|-----------------|---------------|---------------|---------------|----------------|-----------------|---------------|---------------|---------------|----------------|---------------|-----------------|
| Handed          | -             | -             | -             | -              | Handed          | -             | -             | -             | -              | -             | Handed          |
| 1½              | 1             | 1             | 1             | 2              | 1½              | 1             | 1             | 1             | 2              | 1             | 1½              |
| 600             | 500           | 600           | 800           | 900            | 800             | 300           | 300           | 400           | 800            | 600           | 600             |
| 580             | 430           | 530           | 730           | 860            | 740             | 200           | 234           | 390           | 760            | 530           | 580             |
| 430             | 430           | 430           | 430           | 430            | 430             | 340           | 450           | 450           | 450            | 450           | 450             |
| -               | -             | -             | -             | -              | -               | -             | -             | -             | -              | -             | -               |
| -               | -             | -             | -             | -              | -               | -             | -             | -             | -              | -             | -               |
| 340             | 400           | 500           | 700           | 400            | 500             | 160           | 180           | 340           | 340            | 480           | 340             |
| 400             | 400           | 400           | 400           | 400            | 400             | 300           | 400           | 400           | 400            | 400           | 400             |
| 200             | 200           | 200           | 200           | 200            | 200             | 115           | 120           | 185           | 185            | 195           | 185             |
| 180             | -             | -             | -             | 400            | 180             | -             | -             | -             | 340            | -             | 160             |
| 400             | -             | -             | -             | 400            | 400             | -             | -             | -             | 400            | -             | 300             |
| 140             | -             | -             | -             | 200            | 140             | -             | -             | -             | 185            | -             | 115             |
| 18/10 SS        | 18/10 SS      | 18/10 SS      | 18/10 SS      | 18/10 SS       | 18/10 SS        | 18/10 SS      | 18/10 SS      | 18/10 SS      | 18/10 SS       | 18/10 SS      | 18/10 SS        |
| 1.0             | 1.0           | 1.0           | 1.2           | 1.0            | 1.0             | 0.8           | 0.8           | 0.8           | 0.8            | 0.8           | 0.8             |
| -               | -             | -             | -             | -              | -               | -             | -             | -             | -              | -             | -               |
| Micro-Sheen     | Micro-Sheen   | Micro-Sheen   | Micro-Sheen   | Micro-Sheen    | Micro-Sheen     | Micro-Sheen   | Micro-Sheen   | Micro-Sheen   | Micro-Sheen    | Micro-Sheen   | Micro-Sheen     |
| 2 x 90 square   | 1 x 90 square | 1 x 90 square | 1 x 90 square | 2 x 90 square  | 2 x 90 square   | 1 x 90 square | 1 x 90 square | 1 x 90 square | 2 x 90 square  | 1 x 90 square | 2 x 90 square   |
| BSW             | BSW           | BSW           | BSW           | BSW            | BSW             | BSW           | BSW           | BSW           | BSW            | BSW           | BSW             |
| -               | -             | -             | -             | -              | -               | -             | -             | -             | -              | -             | -               |
| 25              | 25            | 25            | 25            | 25             | 25              | 25            | 25            | 25            | 25             | 25            | 25              |

Continued on next page

## STAINLESS STEEL UNDERMOUNT SINKS

| Continued               | Quad QUB3418_/ | Quad QUB4818_/ |
|-------------------------|----------------|----------------|
| Drainer Position        | Handed         | Handed         |
| No. of Bowls            | 1½             | 1½             |
| Min. Base Unit (mm)     | 600            | 800            |
| Overall Length (mm)     | 600            | 740            |
| Overall Width (mm)      | 450            | 450            |
| Cutout Size Length (mm) | -              | -              |
| Cutout Size Width (mm)  | -              | -              |
| Main Bowl Length (mm)   | 340            | 480            |
| Main Bowl Width (mm)    | 400            | 400            |
| Main Bowl Depth (mm)    | 180            | 195            |
| Second Bowl Length (mm) | 180            | 180            |
| Second Bowl Width (mm)  | 400            | 400            |
| Second Bowl Depth (mm)  | 120            | 120            |
| Material                | 18/10 SS       | 18/10 SS       |
| Gauge (mm)              | 0.8            | 0.8            |
| Finish Drainer          | -              | -              |
| Finish Bowl             | Micro-Sheen    | Micro-Sheen    |
| Waste Size Ø (mm)       | 2 x 90 square  | 2 x 90 square  |
| Waste Kit               | BSW            | BSW            |
| Tap Hole Size Ø (mm)    | -              | -              |
| Guarantee (years)       | 25             | 25             |

## GRANITE INSET SINKS

|                             | Scoria SCO1051_/ | Scoria SCO1052_/ |
|-----------------------------|------------------|------------------|
| Drainer Position            | Reversible       | Reversible       |
| No. of Bowls                | 1                | 1½               |
| Min. Base Unit (mm)         | 600              | 600              |
| Overall Length (mm)         | 1000             | 1000             |
| Overall Width (mm)          | 500              | 500              |
| Cutout Size Length (mm)     | 980              | 980              |
| Cutout Size Width (mm)      | 480              | 480              |
| Main Bowl Length (mm)       | 480              | 345              |
| Main Bowl Width (mm)        | 440              | 440              |
| Main Bowl Depth (mm)        | 200              | 200              |
| Second Bowl Length (mm)     | -                | 155              |
| Second Bowl Width (mm)      | -                | 295              |
| Second Bowl Depth (mm)      | -                | 146              |
| Material                    | Igneous Granite  | Igneous Granite  |
| Waste Size Ø (mm)           | 1 x 90           | 2 x 90           |
| Waste Kit                   | BSW              | BSW              |
| Tap Hole Size Ø (mm)        | -                | -                |
| Min. Worktop Thickness (mm) | 30               | 30               |
| Max. Worktop Thickness (mm) | 40               | 40               |
| Guarantee (years)           | 25               | 25               |

## GRANITE INSET SINKS

|                             | Amethyst AME1051_/ | Amethyst AME1052_/ | Amethyst AME860_/ | Andesite AND1051_/ | Andesite AND1052_/ |
|-----------------------------|--------------------|--------------------|-------------------|--------------------|--------------------|
| Drainer Position            | Reversible         | Reversible         | Reversible        | Reversible         | Reversible         |
| No. of Bowls                | 1                  | 1½                 | 1                 | 1                  | 1½                 |
| Min. Base Unit (mm)         | 600                | 600                | 450               | 600                | 600                |
| Overall Length (mm)         | 1000               | 1000               | 860               | 1000               | 1000               |
| Overall Width (mm)          | 500                | 500                | 500               | 500                | 500                |
| Cutout Size Length (mm)     | 980                | 980                | 840               | 980                | 980                |
| Cutout Size Width (mm)      | 480                | 480                | 480               | 480                | 480                |
| Main Bowl Length (mm)       | 482                | 341                | 348               | 480                | 345                |
| Main Bowl Width (mm)        | 422                | 422                | 422               | 430                | 430                |
| Main Bowl Depth (mm)        | 220                | 204                | 204               | 200                | 200                |
| Second Bowl Length (mm)     | -                  | 162                | -                 | -                  | 155                |
| Second Bowl Width (mm)      | -                  | 301                | -                 | -                  | 340                |
| Second Bowl Depth (mm)      | -                  | 148                | -                 | -                  | 146                |
| Material                    | Igneous Granite    | Igneous Granite    | Igneous Granite   | Igneous Granite    | Igneous Granite    |
| Waste Size Ø (mm)           | 1 x 90             | 2 x 90             | 1 x 90            | 1 x 90             | 2 x 90             |
| Waste Kit                   | BSW                | BSW                | BSW               | BSW                | BSW                |
| Tap Hole Size Ø (mm)        | -                  | -                  | -                 | -                  | -                  |
| Min. Worktop Thickness (mm) | 30                 | 30                 | 30                | 30                 | 30                 |
| Max. Worktop Thickness (mm) | 40                 | 40                 | 40                | 40                 | 40                 |
| Guarantee (years)           | 25                 | 25                 | 25                | 25                 | 25                 |

## GRANITE UNDERMOUNT SINKS

|                         | Paragon PAR1632_/ | Paragon PAR3115_/ | Paragon PAR3641_/ | Paragon PAR4432_/ | Paragon PAR4553_/ |
|-------------------------|-------------------|-------------------|-------------------|-------------------|-------------------|
| Drainer Position        | -                 | Right Hand        | -                 | -                 | -                 |
| No. of Bowls            | 1                 | 1½                | 2                 | 1                 | 1                 |
| Min. Base Unit (mm)     | 300               | 600               | 900               | 600               | 600               |
| Overall Length (mm)     | 215               | 550               | 824               | 501               | 533               |
| Overall Width (mm)      | 378               | 430               | 481               | 377               | 457               |
| Cutout Size Length (mm) | 162               | 490               | 776               | 449               | 488               |
| Cutout Size Width (mm)  | 325               | 370               | 433               | 325               | 410               |
| Main Bowl Length (mm)   | 162               | 310               | 362               | 449               | 469               |
| Main Bowl Width (mm)    | 325               | 370               | 395               | 325               | 393               |
| Main Bowl Depth (mm)    | 128               | 200               | 241               | 168               | 209               |
| Second Bowl Length (mm) | -                 | 152               | 362               | -                 | -                 |
| Second Bowl Width (mm)  | -                 | 370               | 395               | -                 | -                 |
| Second Bowl Depth (mm)  | -                 | 130               | 241               | -                 | -                 |
| Material                | Igneous Granite   | Igneous Granite   | Igneous Granite   | Igneous Granite   | Igneous Granite   |
| Waste Size Ø (mm)       | 1 x 90            | 2 x 90            | 2 x 92            | 1 x 90            | 1 x 92            |
| Waste Kit               | BSW               | BSW               | BSW               | BSW               | BSW               |
| Tap Hole Size Ø (mm)    | -                 | -                 | -                 | -                 | -                 |
| Guarantee (years)       | 25                | 25                | 25                | 25                | 25                |

| Cubix CX9851_/   | Cubix CX9852_/   | Elements ELE1051_/ | Elements ELE1052_/ | Lunar LU9851_/   | Lunar LU9852_/   | Mayon MAY1051_/ | Mayon MAY1052_/ | Mayon MAY690_/  | Mica MIC1051_/  | Mica MIC1052_/  | Mica MIC860_/   |
|------------------|------------------|--------------------|--------------------|------------------|------------------|-----------------|-----------------|-----------------|-----------------|-----------------|-----------------|
| Reversible       | Reversible       | Reversible         | Reversible         | Reversible       | Reversible       | Reversible      | Reversible      | Reversible      | Reversible      | Reversible      | Reversible      |
| 1                | 1½               | 1                  | 1½                 | 1                | 1½               | 1               | 1½              | 1               | 1               | 1½              | 1               |
| 600              | 650              | 600                | 600                | 600              | 650              | 600             | 600             | 450             | 600             | 600             | 500             |
| 985              | 985              | 1000               | 1000               | 985              | 985              | 1000            | 1000            | 690             | 1000            | 1000            | 860             |
| 508              | 508              | 500                | 500                | 508              | 508              | 510             | 510             | 510             | 500             | 500             | 500             |
| 965              | 965              | 980                | 980                | 965              | 965              | 980             | 980             | 670             | 980             | 980             | 840             |
| 488              | 488              | 480                | 480                | 488              | 488              | 490             | 490             | 490             | 480             | 480             | 480             |
| 500              | 350              | 480                | 380                | 500              | 344              | 500             | 334             | 365             | 484             | 335             | 415             |
| 428              | 428              | 420                | 420                | 428              | 428              | 446             | 446             | 448             | 443             | 443             | 446             |
| 180              | 180              | 180                | 180                | 195              | 195              | 195             | 195             | 195             | 195             | 195             | 195             |
| -                | 160              | -                  | 125                | -                | 165              | -               | 167             | -               | -               | 151             | -               |
| -                | 355              | -                  | 282                | -                | 428              | -               | 296             | -               | -               | 336             | -               |
| -                | 153              | -                  | 120                | -                | 125              | -               | 120             | -               | -               | 120             | -               |
| Neo-Rock Granite | Neo-Rock Granite | Igneous Granite    | Igneous Granite    | Neo-Rock Granite | Neo-Rock Granite | Igneous Granite | Igneous Granite | Igneous Granite | Igneous Granite | Igneous Granite | Igneous Granite |
| 1 x 89           | 2 x 89           | 1 x 90             | 2 x 90             | 1 x 89           | 2 x 89           | 1 x 90          | 2 x 90          | 1 x 90          | 1 x 90          | 2 x 90          | 1 x 90          |
| BSW              | BSW              | BSW                | BSW                | BSW              | BSW              | BSW             | BSW             | BSW             | BSW             | BSW             | BSW             |
| -                | -                | -                  | -                  | -                | -                | -               | -               | -               | -               | -               | -               |
| 29               | 29               | 30                 | 30                 | 29               | 29               | 30              | 30              | 30              | 30              | 30              | 30              |
| 46               | 46               | 40                 | 40                 | 46               | 46               | 40              | 40              | 40              | 40              | 40              | 40              |
| 25               | 25               | 25                 | 25                 | 25               | 25               | 25              | 25              | 25              | 25              | 25              | 25              |

## FIRE-CLAY CERAMIC INSET SINKS

|                         | Austell CAU10101WH/ | Austell CAU10102WH/ | Nevada CNV1WH/ | Nevada CNV2WH/ | Portland CPL10101WH/ | Portland CPL10102WH/ | Rustic CRT10101WH/ | Rustic CRT10202WH/ |
|-------------------------|---------------------|---------------------|----------------|----------------|----------------------|----------------------|--------------------|--------------------|
| Drainer Position        | Reversible          | Reversible          | Reversible     | Reversible     | Reversible           | Reversible           | Reversible         | Reversible         |
| No. of Bowls            | 1                   | 1½                  | 1              | 1½             | 1                    | 1½                   | 1                  | 1½                 |
| Min. Base Unit (mm)     | 600                 | 600                 | 600            | 600            | 600                  | 600                  | 600                | 600                |
| Overall Length (mm)     | 1000                | 1000                | 1010           | 1010           | 1010                 | 1010                 | 1000               | 1000               |
| Overall Width (mm)      | 500                 | 500                 | 510            | 510            | 510                  | 510                  | 500                | 500                |
| Cutout Size Length (mm) | 970                 | 970                 | 990            | 990            | 990                  | 990                  | 980                | 980                |
| Cutout Size Width (mm)  | 470                 | 470                 | 490            | 490            | 490                  | 490                  | 480                | 480                |
| Main Bowl Length (mm)   | 449                 | 340                 | 470            | 350            | 460                  | 350                  | 460                | 360                |
| Main Bowl Width (mm)    | 415                 | 415                 | 340            | 340            | 400                  | 410                  | 390                | 390                |
| Main Bowl Depth (mm)    | 190                 | 190                 | 185            | 190            | 195                  | 195                  | 195                | 195                |
| Second Bowl Length (mm) | -                   | 170                 | -              | 140            | -                    | 135                  | -                  | 147                |
| Second Bowl Width (mm)  | -                   | 300                 | -              | 340            | -                    | 257                  | -                  | 260                |
| Second Bowl Depth (mm)  | -                   | 142                 | -              | 125            | -                    | 125                  | -                  | 120                |
| Material                | Fire-clay           | Fire-clay           | Fire-clay      | Fire-clay      | Fire-clay            | Fire-clay            | Fire-clay          | Fire-clay          |
| Waste Size Ø (mm)       | 1 x 90              | 2 x 90              | 1 x 89         | 2 x 89         | 1 x 89               | 2 x 89               | 1 x 89             | 1 x 90, 1 x 60     |
| Waste Kit               | BSW                 | BSW                 | BSW            | BSW            | BSW                  | BSW                  | BSW                | BSW                |
| Tap Hole Size Ø (mm)    | -                   | -                   | -              | -              | -                    | -                    | -                  | -                  |
| Guarantee (years)       | 10                  | 10                  | 10             | 10             | 10                   | 10                   | 10                 | 10                 |

Please refer to fitting instructions for recommended min/max worktop dimensions.

## FIRE-CLAY CERAMIC BELFAST AND UNDERMOUNT INSET SINKS

|                         | Belfast CBL595WH/ | Classic Belfast CCBL595WH/ | Classic Belfast CDB800WH/ | Farmhouse Belfast CFBL595_/ | Farmhouse Belfast CFBL800WH/ | Rustique CRUB1740WH/ | Rustique CRUB3216WH/ | Rustique CRUB3314WH/ | Rustique CRUB385WH/ | Rustique CRUB4040WH/ |
|-------------------------|-------------------|----------------------------|---------------------------|-----------------------------|------------------------------|----------------------|----------------------|----------------------|---------------------|----------------------|
| Drainer Position        | -                 | -                          | -                         | -                           | -                            | -                    | Right Hand           | Right Hand           | -                   | -                    |
| No. of Bowls            | 1                 | 1                          | 2                         | 1                           | 2                            | 1                    | 1.5                  | 1.3                  | 1                   | 1                    |
| Min. Base Unit (mm)     | 600               | 600                        | 800                       | 600                         | 800                          | 300                  | 600                  | 650                  | 500                 | 500                  |
| Overall Length (mm)     | 595               | 595                        | 800                       | 595                         | 793                          | 234                  | 595                  | 600                  | 445 Ø               | 462                  |
| Overall Width (mm)      | 475               | 455                        | 500                       | 455                         | 491                          | 460                  | 460                  | 522                  | 445 Ø               | 462                  |
| Overall Height (mm)     | 220               | 250                        | 220                       | 252                         | 220                          | -                    | -                    | -                    | -                   | -                    |
| Cutout Size Length (mm) | -                 | -                          | -                         | -                           | -                            | -                    | -                    | -                    | -                   | -                    |
| Cutout Size Width (mm)  | -                 | -                          | -                         | -                           | -                            | -                    | -                    | -                    | -                   | -                    |
| Main Bowl Length (mm)   | 550               | 525                        | 365                       | 535                         | 366                          | 174                  | 337                  | 360                  | 385 Ø               | 400                  |
| Main Bowl Width (mm)    | 420               | 385                        | 450                       | 395                         | 450                          | 400                  | 400                  | 460                  | 385 Ø               | 400                  |
| Main Bowl Depth (mm)    | 200               | 215                        | 200                       | 222                         | 195                          | 195                  | 196                  | 195                  | 174                 | 195                  |
| Second Bowl Length (mm) | -                 | -                          | 365                       | -                           | 366                          | -                    | 183                  | 162                  | -                   | -                    |
| Second Bowl Width (mm)  | -                 | -                          | 450                       | -                           | 450                          | -                    | 400                  | 300                  | -                   | -                    |
| Second Bowl Depth (mm)  | -                 | -                          | 200                       | -                           | 195                          | -                    | 176                  | 175                  | -                   | -                    |
| Material                | Fire-clay         | Fire-clay                  | Fire-clay                 | Fire-clay                   | Fire-clay                    | Fire-clay            | Fire-clay            | Fire-clay            | Fire-clay           | Fire-clay            |
| Waste Size Ø (mm)       | 1 x 90            | 1 x 65                     | 2 x 90                    | 1 x 60                      | 2 x 89                       | 1 x 90               | 2 x 90               | 2 x 90               | 1 x 89              | 1 x 90               |
| Waste Kit               | BSW               | BSW                        | BSW                       | BSW                         | BSW                          | BSW                  | BSW                  | BSW                  | BSW                 | BSW                  |
| Tap Hole Size Ø (mm)    | -                 | -                          | -                         | -                           | -                            | -                    | -                    | -                    | -                   | -                    |
| Guarantee (years)       | 10                | 10                         | 10                        | 10                          | 10                           | 10                   | 10                   | 10                   | 10                  | 10                   |

NB. Rustique bowls can be installed as inset or undermount, please visit [www.rangemastersinks.co.uk](http://www.rangemastersinks.co.uk) for cut out dimensions. Please refer to fitting instructions for recommended min/max worktop dimensions.

| Rustique CRUB5340WH/ |
|----------------------|
| -                    |
| 1                    |
| 650                  |
| 598                  |
| 462                  |
| -                    |
| -                    |
| 536                  |
| 401                  |
| 195                  |
| -                    |
| -                    |
| -                    |
| Fire-clay            |
| 1 x 91               |
| BSW                  |
| -                    |
| 10                   |



Rustique 1.5B sink with Aquaclassic filter tap

## TAPS

|                         | Aquaclassic 2 TAC2_/ | Aquaclassic 3 TAC3_/ | Aquadisc 1 TAD1CM/ | Aquadisc 3 TAD3_/ | Aquadisc 5 TAD5_/ | Aquadisc 5 Pull Out TAD5POCM/ | Aquaflow TAF1CM/ | Aquamode 1 TAE1_/ | Aquapro TAP1_/ | Aquaquad TAQ2_/ |
|-------------------------|----------------------|----------------------|--------------------|-------------------|-------------------|-------------------------------|------------------|-------------------|----------------|-----------------|
| Min. Pressure (bar)     | 0.3                  | 0.3                  | 0.3                | 0.2               | 0.3               | 0.75                          | 0.2              | 0.3               | 0.5            | 0.4             |
| Max. Pressure (bar)     | 5.5                  | 5.5                  | 5.5                | 5.5               | 5.5               | 5.5                           | 5.5              | 5.5               | 5.5            | 5.5             |
| Overall Tap Height (mm) | 359                  | 380                  | 278                | 210               | 277               | 275                           | 163              | 353               | 285            | 310             |
| Spout Exit Reach (mm)   | 190                  | 216                  | 193                | 210               | 212               | 218                           | 230              | 190               | 210            | 192             |
| Spout Exit Height (mm)  | 229                  | 254                  | 245                | 185               | 247               | 244                           | 140              | 222               | 250            | 237             |
| Guarantee (years)       | 5                    | 5                    | 5                  | 5                 | 5                 | 5                             | 5                | 5                 | 5              | 5               |

| Aquaspray 3 TAS3CM/ | Aquatrend TRE1_/ | Aquatrend TREIPO_/ | Aquatrend SL TREISL_/ | Aquatrend SL TREISLPO_/ | Aquatrend Spring TREISPRCM/ | Aquavibe TVB1_/ | Aquavogue TVO1_/ | Aspire TAI1_/ | Belfast Mono TBM1_/ | Belfast Trad. TBL1_/ | Conical TCO1_/ |
|---------------------|------------------|--------------------|-----------------------|-------------------------|-----------------------------|-----------------|------------------|---------------|---------------------|----------------------|----------------|
| 1.5                 | 0.3              | 1.5                | 0.4                   | 1.5                     | 0.5                         | 0.2             | 0.3              | 0.4           | 0.3                 | 0.1                  | 0.3            |
| 5.5                 | 5.5              | 5.5                | 5.5                   | 5.5                     | 5.5                         | 5.5             | 5.5              | 5.5           | 5.5                 | 5.5                  | 5.5            |
| 180                 | 379              | 388                | 390                   | 390                     | 528                         | 287             | 398              | 365           | 343                 | 368                  | 294            |
| 200                 | 216              | 220                | 216                   | 220                     | 188                         | 214             | 216              | 231           | 193                 | 190                  | 212            |
| 120                 | 253              | 203                | 264                   | 205                     | 200                         | 247             | 272              | 230           | 232                 | 260                  | 264            |
| 5                   | 5                | 5                  | 5                     | 5                       | 5                           | 5               | 5                | 5             | 5                   | 5                    | 5              |

|                         | Conical SL TCOSL1_/ | Cruciform TCF2_/ | Ellipse TEPI1_/ | Estuary TES1_/ | Intense TID1_/ | Monorise TMR1_/ | Parma TPM1_/ | Pro Spray TPR1CM/ | Quad. Cont TQC1_/ | Quad. Mono TQM1_/ |
|-------------------------|---------------------|------------------|-----------------|----------------|----------------|-----------------|--------------|-------------------|-------------------|-------------------|
| Min. Pressure (bar)     | 0.6                 | 0.3              | 0.6             | 0.3            | 0.5            | 0.5             | 0.3          | 1.5               | 0.4               | 0.5               |
| Max. Pressure (bar)     | 5.5                 | 5.5              | 5.5             | 5.5            | 5.5            | 5.5             | 5.5          | 5.5               | 5.5               | 5.5               |
| Overall Tap Height (mm) | 294                 | 392              | 277             | 361            | 398            | 363             | 389          | 535               | 291               | 335               |
| Spout Exit Reach (mm)   | 212                 | 216              | 185             | 194            | 216            | 194             | 216          | 184               | 219               | 200               |
| Spout Exit Height (mm)  | 264                 | 265              | 210             | 230            | 273            | 233             | 263          | 225               | 271               | 230               |
| Guarantee (years)       | 5                   | 5                | 5               | 5              | 5              | 5               | 5            | 5                 | 5                 | 5                 |

| Quad. SL TQSL1_/ | Quad. Stem TMO2_/ | Salorno TSNI1_/ | Trad. Bridge TBL3_/ |
|------------------|-------------------|-----------------|---------------------|
| 0.5              | 0.5               | 0.4             | 0.3                 |
| 5.5              | 5.5               | 5.5             | 5.5                 |
| 317              | 275               | 232             | 355                 |
| 219              | 206               | 207             | 192                 |
| 297              | 250               | 203             | 243                 |
| 5                | 5                 | 5               | 5                   |

## FILTER TAPS

|                         | Aquaclassic TSA4_/ | Cruciform TSA5_/ |
|-------------------------|--------------------|------------------|
| Min. Pressure (bar)     | 0.2                | 0.2              |
| Max. Pressure (bar)     | 5.5                | 5.5              |
| Overall Tap Height (mm) | 392                | 392              |
| Spout Exit Reach (mm)   | 216                | 216              |
| Spout Exit Height (mm)  | 265                | 265              |
| Guarantee (years)       | 5                  | 5                |

## 4-IN-1 HOT WATER TAPS

|                         | GEO Trend GEO43TRE_/ | GEO Classic GEO43CLA_/ |
|-------------------------|----------------------|------------------------|
| Min. Pressure (bar)     | 0.5                  | 0.5                    |
| Max. Pressure (bar)     | 5.5                  | 5.5                    |
| Overall Tap Height (mm) | 425                  | 425                    |
| Spout Exit Reach (mm)   | 216                  | 216                    |
| Spout Exit Height (mm)  | 298                  | 298                    |
| Guarantee (years)       | 5                    | 5                      |

## 4-IN-1 HOT WATER BOILER

|                           |                 |
|---------------------------|-----------------|
| Min. Inlet Pressure (bar) | 2               |
| Boiler Type               | Vented          |
| Power Rating (W)          | 2800            |
| Capacity (litres)         | 3               |
| Min. Temperature (°C)     | 80              |
| Max. Temperature (°C)     | 98              |
| Guarantee (years)         | 2               |
| Boiler Dimensions (mm)    | 175 x 400 x 410 |

# RANGEmaster

Sinks & Taps

UNRIVALLED PERFORMANCE



Meadow Lane  
Long Eaton  
Nottingham  
NG10 2GD  
England

#### Trade Enquiries

+44 (0)115 946 4000  
tradesales@agarangemaster.co.uk

#### Consumer Enquiries

01926 457628  
consumers@agarangemaster.co.uk

[rangemastersinks.co.uk](http://rangemastersinks.co.uk) [rangemaster.co.uk](http://rangemaster.co.uk)

Copyright AGA Rangemaster Ltd 2019.  
Registered in England & Wales under registered number 3872754.  
Registered office: Meadow Lane, Long Eaton, Nottingham, NG10 2GD.  
Brand names, words and logo are registered trademarks of AGA Rangemaster Ltd.

Rangemaster continuously seeks improvements in specification, design and production of products and thus, alterations take place periodically. Whilst every effort is made to produce up-to-date literature, this brochure should not be regarded as an infallible guide to current specification, nor does it constitute an offer for the sale of any particular product.



12/19 D007989