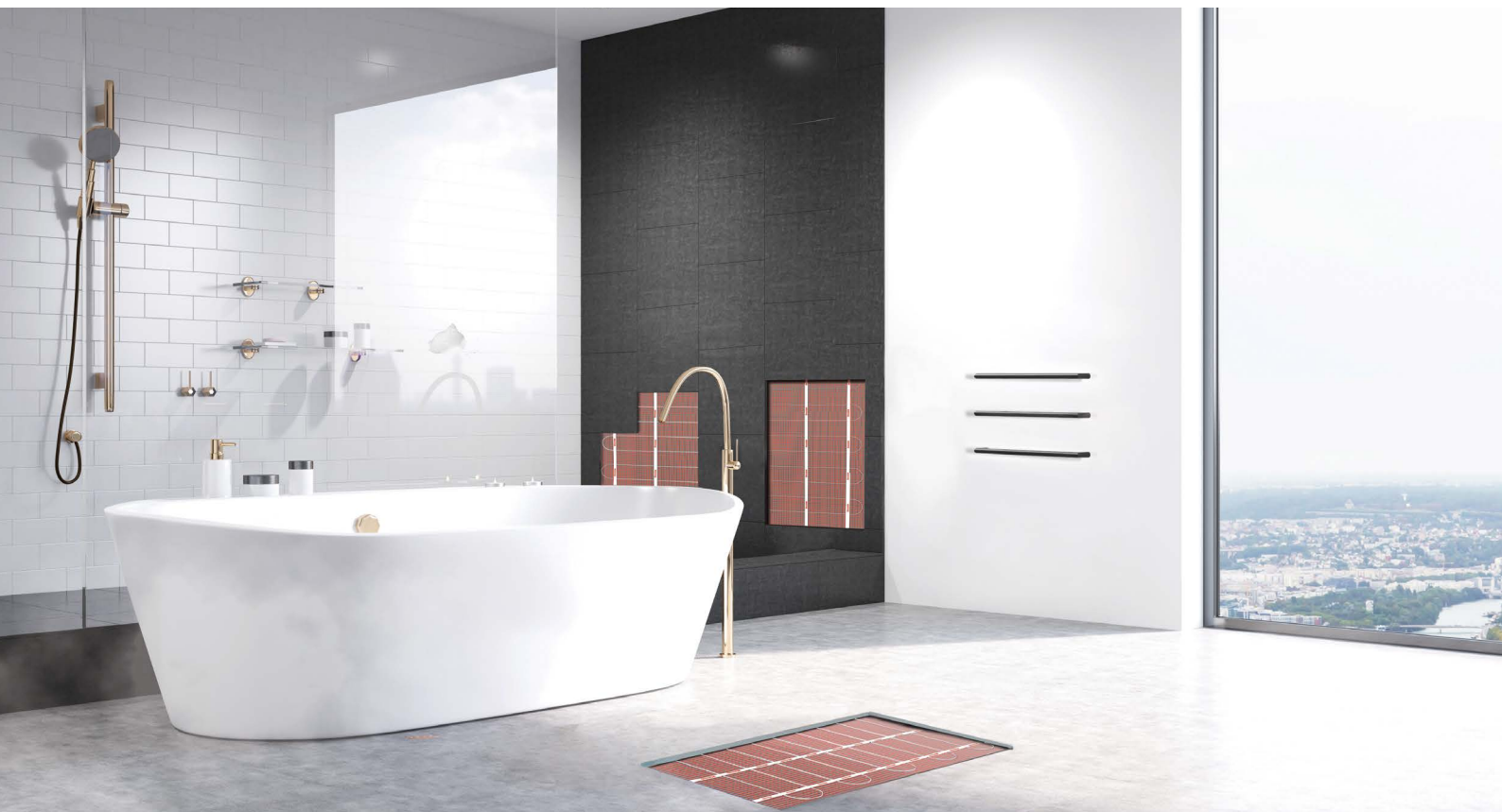


StickyMat 3D™



Overview

Warmup StickyMat 3D is the perfect heating system for both wall and floor heating applications. Using StickyMat 3D on walls means heating the bathroom is that much easier and eliminates the need for radiators for greater design freedom.

The mat has been specifically designed so that there is a continuous, 100% earth braid, making it fully compliant with the latest edition of the Wiring Regulations for wall heating applications, eliminating the need for a second earth screen during installation.

StickyMat 3D is ideal for regularly shaped rooms as the 0.5 m wide mats can be easily applied to walls or floors in parallel runs and securely fixed to the substrate with the self-adhesive mesh, making installation quick.

The pressure sensitive adhesive on the mesh securely binds the mats to the substrate, keeping them flat and ensuring the application of tile adhesive is snag free whilst allowing the mats to be easily repositioned as needed.

The ultra-thin, 1.8 mm multistrand, dual core heating cable, is double insulated with an advanced fluoropolymer making it exceptionally tough and easy to tile over.

StickyMat 3D is available in 200 W/m² mats which ensures the quickest heating response time for your room.



Electric
Heating System

0345 345 2288

uk@warmup.com
www.warmup.co.uk

Warmup

The world's best-selling floor heating brand™

Features

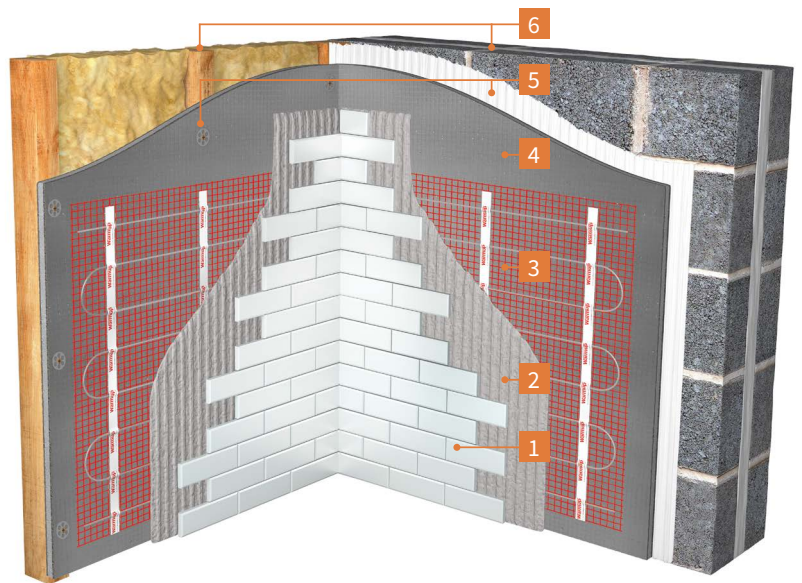
- StickyMat 3D™ is available 200 W/m² mats for quickest heating response time.
- 100% continuous earth braid, making it fully compliant with the latest edition of the Wiring Regulations for wall heating applications.
- Eliminates condensation and mould growth in heated areas.
- Ultra-thin, 1.8 mm multi-strand, dual core heating cable is double insulated with an advanced fluoropolymer making it exceptionally tough and easy to tile over.
- Ideal for regular shaped rooms, where the 0.5 m wide mats can be rolled out in parallel runs.
- Pressure sensitive adhesive securely binds the mats to the floor or wall keeping them flat for fast and secure installation.
- BEAB Approved and CE marked meeting the highest safety standards for ultimate peace of mind.
- Lifetime Warranty & SafetyNet Installation Guarantee.



Substrates

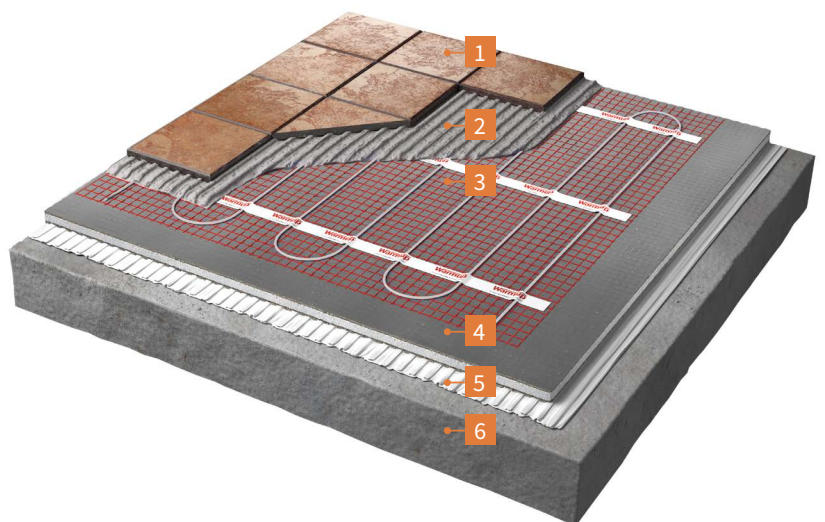
RECOMMENDED WALL CONSTRUCTION

- 1 Wall finish
- 2 Flexible tile adhesive or plaster
- 3 Warmup StickyMat 3D
- 4 Warmup Insulation Board
- 5 Flexible Tile Adhesive (Solid Walls)
Screw and Washer (Stud Walls)
- 6 Solid / Stud Wall



RECOMMENDED FLOOR CONSTRUCTION

- 1 Floor finish
- 2 Flexible tile adhesive or levelling compound
- 3 Warmup StickyMat 3D
- 4 Warmup Insulation Board
- 5 Flexible Tile Adhesive
- 6 Subfloor



Technical Specifications

TECHNCIAL SPECIFICATIONS - StickyMat 3D™ (200 W/m²)

OPERATING VOLTAGE	230 V AC : 50 Hz
OUTPUT RATING	200 W/m ²
WIDTH	500 mm (0.5 m)
MAT THICKNESS	3 mm
CABLE THICKNESS	1.8 mm
HEATING CORES	Multi-strand, dual core
EARTH PROTECTION	100% earth braid coverage
INNER INSULATION	ETFE
OUTER INSULATION	ETFE
IP RATING	IPX7
MIN. INSTALLATION TEMPERATURE	-10 °C
CONNECTION	3 m “coldtail” connection



MAT SIZE GUIDE - StickyMat 3D™ (200 W/m²)

PRODUCT CODE	HEATED AREA (m ²)	POWER (W)	LOAD (A)	RESISTANCE (Ω)	REFERENCE RESISTANCE BANDS (Ω)
2SMFW 0.5	0.5	100	0.43	529.0	502.6 - 555.5
2SMFW 1	1	200	0.87	264.5	251.3 - 278.7
2SMFW 1.5	1.5	300	1.30	176.3	167.5 - 185.1
2SMFW 2	2	400	1.74	132.3	125.7 - 138.9

WARMUP COMPONENTS

Insulation Boards

Warmup® Insulation Boards are a water resistant, insulated tile backer board made of extruded polystyrene, faced on both sides with a fibreglass mesh embedded into a thin cement polymer mortar.

They have high thermal insulation properties for energy efficiency and an added benefit of sound absorption.

INSBOARD - TECHNICAL SPECIFICATIONS

MODEL	THICKNESS (mm)	WIDTH (mm)	LENGTH (mm)	WEIGHT (kg)	R VALUE (m ² .K/W)
INSBOARD6MM	6	600	1250	2.2	0.14
INSBOARD(PK1)	10	600	1250	2.3	0.25
INSBOARD20MM	20	600	1250	2.5	0.53
INSBOARD30MM	30	600	1250	2.8	0.81
INSBOARD40MM	40	600	1250	3.0	1.08
INSBOARD50MM	50	600	1250	3.2	1.36



Warmup Insulation Boards have zero Ozone Depletion Potential (ODP) and a Global Warming Potential (GWP) of less than 5

Thermostat



4iE® SMART WIFI THERMOSTAT

For Central Heating and Underfloor Heating Systems

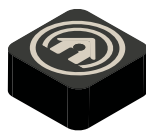
Connected to the internet by WiFi, it can be controlled from a smart phone, tablet or computer as well as its own touchscreen interface. It learns how homeowners use their heating and the unique way each zone reacts. It uses this knowledge to suggest ways to save energy, such as what temperature should be set when the area is not in use and when the heating can be turned off earlier with no noticeable impact on comfort.

Personalise your 4iE with uploadable photo backgrounds and changeable, textured overlays.



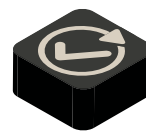
SmartGeo™

Always at the right temperature automatically, and up to 25% lower energy usage. Just like magic.



EasySwitch™

Always on the best tariff, automatically. Saving on average £210.



Easy to use

Simple and secure set up using WiFi, with 24/7 technical support.