



MULTIPANEL®

2019

Don't tile it. Multipanel it.

Best selling waterproof bathroom wall panels



“The smart alternative to bathroom tiles”



Discover the **Linda Barker** collection



Elegant solutions for beautiful bathrooms

Sophistication made simple

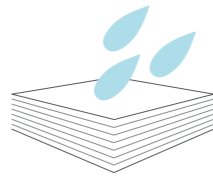
Set your imagination free and create beautiful waterproof spaces with Multipanel, the luxurious and practical way to refurbish your bathroom. Quick and easy to install, Multipanel lets you achieve stunning looks that will last for years to come.

With Multipanel you can say hello to years of easy care and goodbye to cleaning grout and mould. And, because Multipanel's beautiful walls, floors and ceilings come in a huge selection of exquisite colours and textures, a whole host of design possibilities open up for you to reinvent your bathroom in a style uniquely yours.

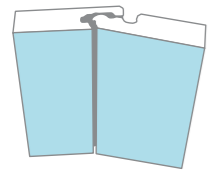
No grout, no hassle



Easy to keep clean



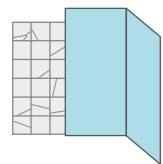
Completely Waterproof



Virtually seamless Hydrolock® joint



Quick & easy to install



Panels can be fitted over existing tiles



15 year warranty

Front cover image with Calacatta Marble (Linda Barker Collection) feature wall, White Profiles and Bath & Shower Tray Seal Kit.



Nero Grafite (Linda Barker Collection) in the shower area and Rimini Click Flooring, Black Profiles and Bath & Shower Tray Seal Kit.



This serene sanctuary is created with Salvaged Planked Elm (Linda Barker Collection) wall panels with Hydrolock joint, Polished Silver Profile and Rimini (Click Range) flooring.

Hydrolock[®]



Innovative connection for a virtually seamless look

The Multipanel Hydrolock connection makes it possible to join two panels together with a near seamless joint. Precisely engineered, Hydrolock edge details create a discreet and watertight joint for complete peace of mind. Hydrolock can be installed on uneven walls with a variation of 6mm.



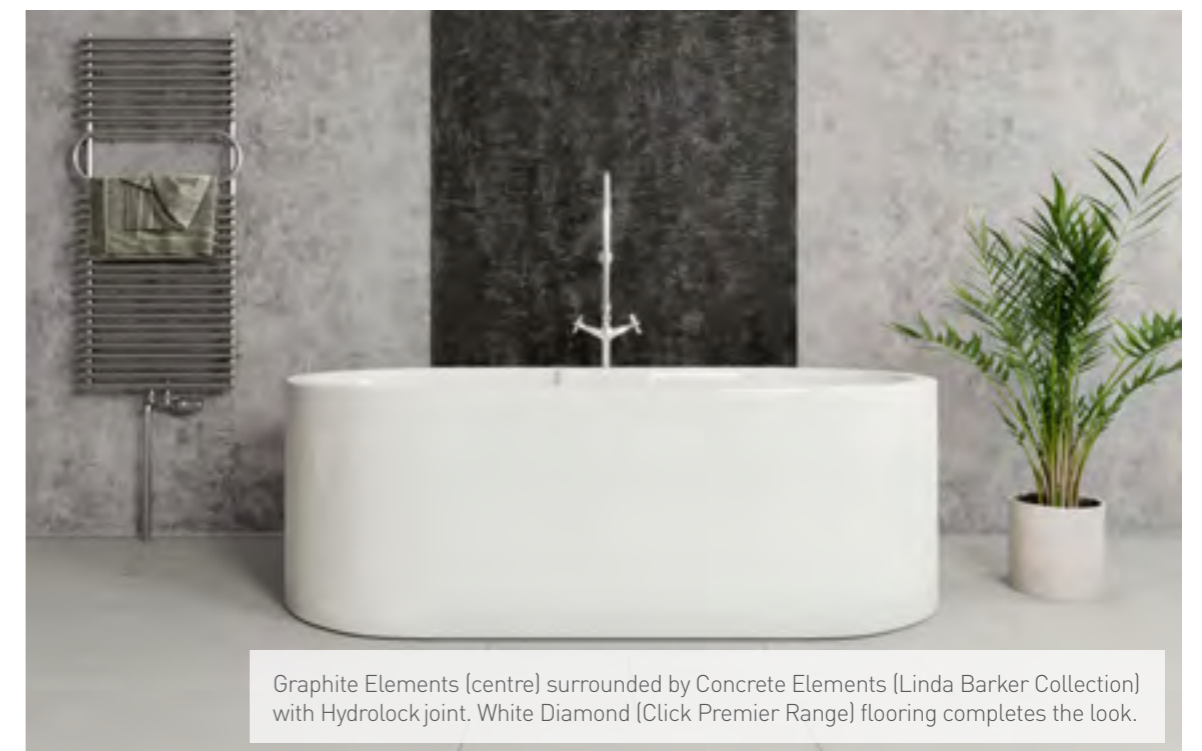
- Hydrolock panels are supplied with tongued and grooved edges for easy click-into-place installation
- Accuracy of pattern alignment between panels may vary depending on the scale of the pattern
- When manufacturing Hydrolock joints, 20mm is lost from the original panel width, e.g.
 2400 x 598mm = 2400 x 578mm finished face size
 2400 x 1200mm = 2400 x 1180mm finished face size
 2400 x 900mm = 2400 x 880mm finished face size
- Unlipped straight edge panels are also available



Fit 'grooved' edge first, and the 'tongued' edge of the next panel angled in



Push 'tongued' edge back until it snaps into place



Graphite Elements (centre) surrounded by Concrete Elements (Linda Barker Collection) with Hydrolock joint. White Diamond (Click Premier Range) flooring completes the look.

Linda Barker Collection

by Multipanel

Authentic looks from the natural world

Whether your bathroom is small or large; light or dark, my Multipanel Collection offers you a quick and cost-effective way of truly transforming it from a functional space into one that is truly special.

Personally, I love dark moody themes and would lean towards one of the panels such as Graphite Elements, with its rugged industrial feel and for lighter and brighter, Calacatta Marble or Soapstone Stellar are great choices.

Marble, granite and wood panels look and feel like real slabs of stone, fossilised timber and patinated corten steel — so much so that you will want to reach out and touch them. I guarantee it!

Linda Barker



- Linda Barker Collection available in sizes: 2400 x 1200mm, 2400 x 900mm or 2400 x 598mm
- 11mm thick waterproof wall panel consisting of bonded high pressure laminates and 9mm hardwood plywood
- Create discreet connection between panels with Hydrolock joint
- Hydrolock or Unlipped panels with matching laminate edging strips available to order

Advances in laminate design allow impressively realistic large scale images to be created on each panel. We have incorporated this new True Scale technology within the new Linda Barker Collection.



Soapstone Stellar (Linda Barker Collection) finished with Polished Silver Profiles and Bath & Shower Tray Seal Kit and beautifully complemented by Coastal Grey Oak (Click flooring).

Get this look

Drama and sophistication created in Graphite Elements (Linda Barker Collection). The panels along the bath use Hydrolock, Satin profiles and Bath & Shower Tray Seal Kit. The flooring is Sicilia (Click range).

Linda Barker Collection



Linda's quick tips:

Creating the perfect bathroom

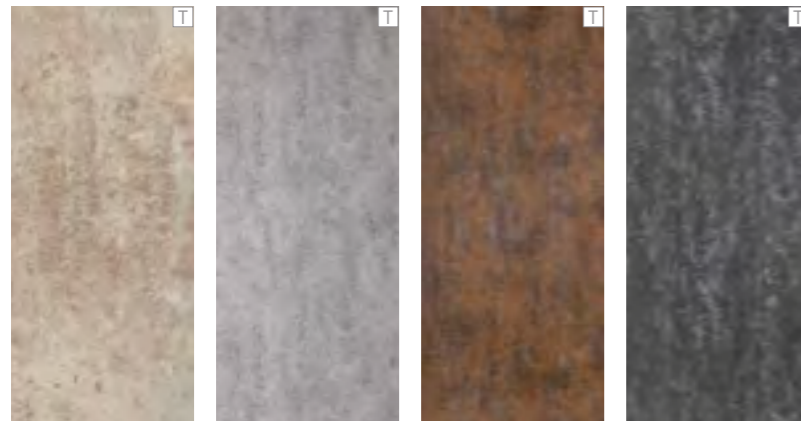
- A bathroom should be a calming restorative place, so loud colour clashes may prove to be just a little bit too distracting. Subtle contrasts of shade and texture, can give you pleasing combinations.
- Sketch out a floor plan to factor in all requirements including storage.
- Give yourself time to plan your perfect space. A mood board in the room will give you the opportunity to mull things over and allow the design to grow on you.
- Avoid being swayed too much by on-trend reports.



Linda collaborated with a team of designers to create her collection.

Elements

Subtle hues and the solid appearance of these panels fit the bill perfectly for achieving that ultra modern industrial look.

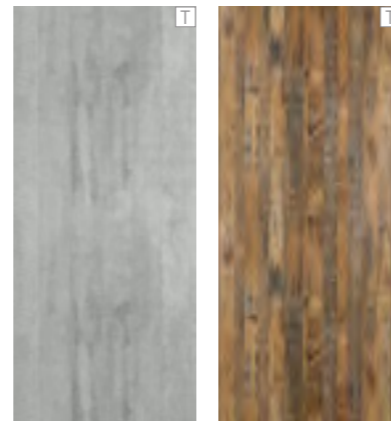


Stone Elements 8831 **Concrete Elements** 8830 **Corten Elements** 8832 **Graphite Elements** 8833

Wood

T Textured

With a softly weathered look, these panels will transform your bathroom into a place of calm and tranquillity.



Concrete Formwood 6362 **Salvaged Planked Elm** 9480

Stone

Emulate the swankiest hotel bathrooms by getting the look and feel of real stone and marble.



Calacatta Marble 3460 **Bianca Luna** 3421 **Soapstone Stellar** 3459 **Dolce Macchiato** 3478 **Ferro Grafite** 9483 **Nero Grafite** 9485 **Jet Noir** 3476



Create a stunning bathroom using Bianca Luna (Linda Barker Collection) with Rimini flooring (Click range). Finished with Bath & Shower Tray Seal Kit, White Profiles and Hydrolock panels along the length of the shower.

Classic Collection

Décors with depth & drama

Introducing our collection of enduring colours and finishes

Our timeless Classic Collection is guaranteed to bring more than a little sophistication and elegance to your home. Choose from these fabulous colours, textures and finishes to achieve a sense of drama. You can also combine feature walls with our other ranges such as the Linda Barker Collection.

Jupiter Silver (Classic Collection), with Satin Silver Profiles and Bath & Shower Tray Seal Kit and Rimini flooring (Click Range).



A Cappuccino Stone (Classic Collection) feature wall in the shower along with Henley Gloss (Heritage Collection) on other walls. The panels are finished with Polished Silver Profiles and the Bath & Shower Tray Seal Kit. The flooring is Coastal Grey Oak (Click Range) along with Soft Grey Marble ceiling.

- Classic Collection available in sizes: 2400 x 1200mm, 2400 x 900mm or 2400 x 598mm
- 11mm thick waterproof wall panel consisting of bonded high pressure laminates and 9mm hardwood plywood
- Create discreet connection between panels with Hydrolock joint
- Hydrolock or Unlipped panels with matching laminate edging strips available to order

Get this look

Stunning Dolce Macchiato (Linda Barker Collection) feature wall behind the shower is complemented by warm Marfil Cream (Classic Collection) and Rimini (Click Range) flooring. Finished with Bath & Shower Tray Seal Kit and Polished Silver Profiles.

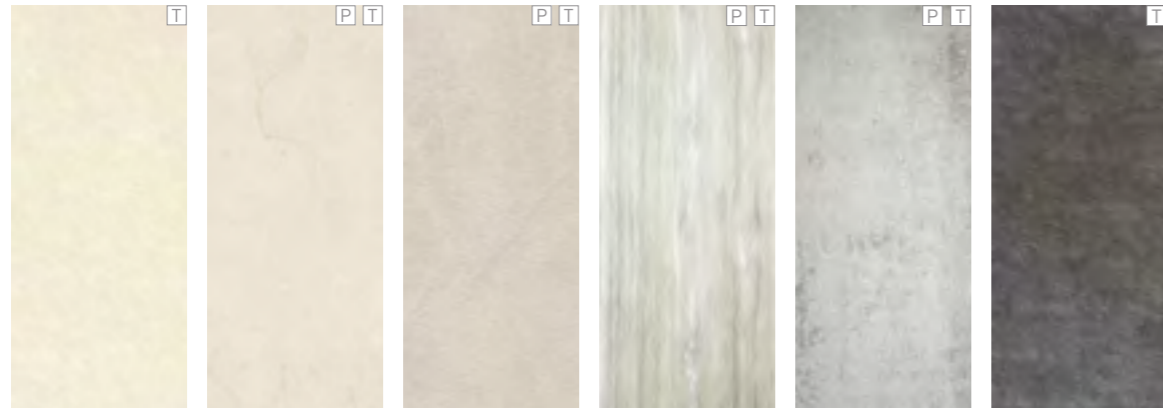
Classic Collection



Earth textures

Multipanel Classic Collection has an exquisite selection of textured finishes, all rich in depth and colour, that transmit warm tones perfect for creating the ultimate environment for relaxation.

T Textured P Premier



Riven Marble 9241 **Marfil Cream** 9477 **Warm Mica** 835 **Jupiter Silver** 3458 **Arctic Stone** 3331 **Riven Slate** 2859

Stone

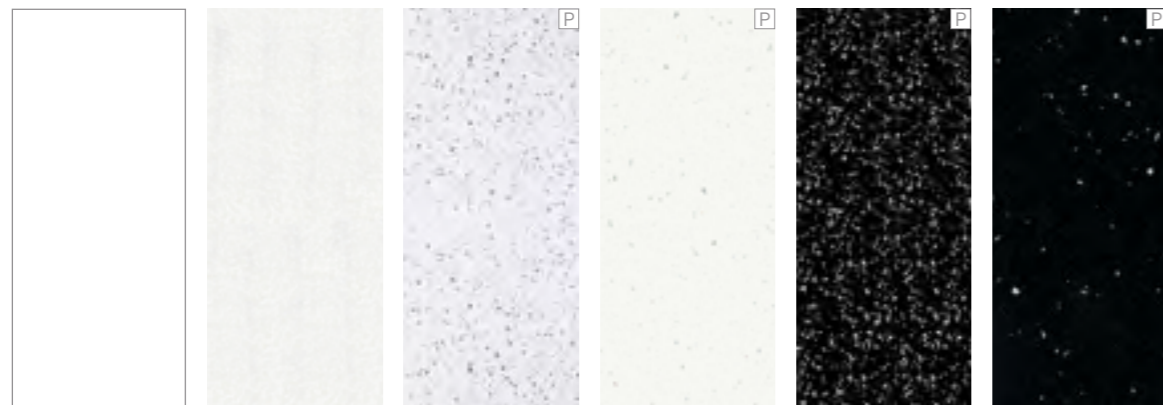
Elegant traditional gloss finishes designed to create a wow factor in your interior. Featuring natural and precious stone, these finishes transport the natural world into the heart of your home.



Classic Marble 141H **Grey Marble** 139H **Natural India** 194H **Travertine** 3526 **Antique Marble** 701 **Cappuccino Stone** 7256

Contemporary

Modern gloss panels create a stunning backdrop for your interior. With spectacular light reflection, these striking panels enhance room dynamics, creating a bright, vibrant space.



White G85 **Frost White** 049 **Blizzard** G030 **White Snow** 3308 **Twilight** G033 **Stardust** 3306



This monochromatic scheme is created using Stardust (Classic Collection) feature wall, complemented by White Snow (Classic Collection) throughout the rest of the bathroom and using Polished Silver Profiles and Bath & Shower Tray Seal Kit. Coastal Grey Oak (Click Range) flooring and White Gloss Ceiling complete the look.

Heritage Collection

Effortless sophistication

Escape to a world of elegance and cool relaxed colours.

For a charming period style bathroom or one that exudes calm and serenity, the subtle colour harmonies of the Heritage Collection will help you create it. Sumptuous textures and hues such as Henley Gloss, Faversham Linewood or Alabaster Oak will enhance and transform any space, giving you an elegant bathroom that you'll admire for years to come.

- Heritage Collection available in sizes: 2400 x 1200mm, 2400 x 900mm or 2400 x 598mm
- 11mm thick waterproof wall panel consisting of bonded high pressure laminates and 9mm hardwood plywood
- Create discreet connection between panels with Hydrolock joint
- Hydrolock or Unlipped panels with matching laminate edging strips available to order

The Heritage Collection comes with the added option of Hydrolock, Multipanel's innovative watertight panel connection. So whether you go for a complete colour block or a combination of the range's Wood, Matt, Linewood or Textile panels, you can incorporate the luxury of a virtually seamless finish to your design.



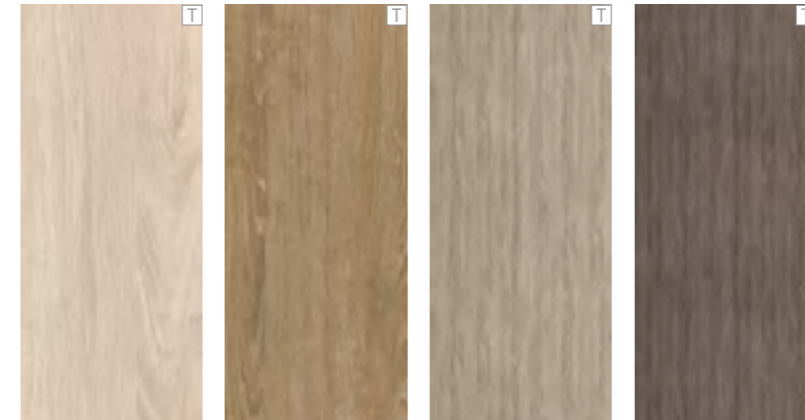
Create a relaxed ambience using Faversham Matte (upper left wall) and Esher Matte (upper right wall) and Henley Gloss (below) with Polished Silver Profiles. Wall panels are using Hydrolock virtually seamless joint. Complemented by Rimini Flooring (Click range).



Wood

Radiating warm tones, stylish waterproof panels that look and feel just like wood and act as a counterpoint to cooler shades.

T Textured



Alabaster Oak
8854

Rural Oak
8853

Delano Oak
8966

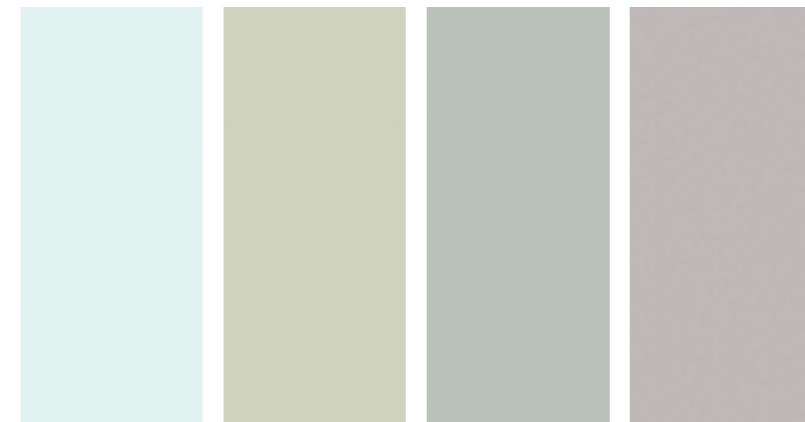
Logan Oak
8967



Delano Oak and Kew Gloss wall panels finished with Polished Silver Profiles and Bath & Shower Tray Seal Kit. Flooring is White Diamond (Click Range).

Smooth

Each of these modern neutrals blend perfectly with other colours from the Heritage palette.



Kew Gloss
10665

Esher Matte
5344

Faversham Matte
5349

Henley Gloss
10232



Esher Matte and White Brick Tile panels finished with White Profiles and Bath & Shower Tray Seal Kit. Flooring is Sicilia (Click Range).

Textile

With the look of woven fabric, you can introduce a sense of depth to your design.

Linewood

Create texture and interest on your walls with the understated fine grain of Linewood.



Neutral Twill Plex
8826

Sarum Twill Plex
8827

Graphite Twill Plex*
8829

Marlow Linewood
L7927

Esher Linewood
L5344

Faversham Linewood L5349

Winchester Linewood L7961

*It is recommended that Graphite Twill Plex be installed with Dark Grey Sealant when using a Hydrolock joint.

Tile

Beautiful tile effect without the hassle of grout

Enjoy the clean fresh mould-free looks of these solid grade laminate panels.

Tile effect wall panels offer the same beautiful, high-end look of real tiles – but without the same installation and maintenance issues.

An affordable alternative to ceramic tiles, these 3mm thick waterproof panels are perfect for a simple and effective interior refresh. The panels are easy to fit and can be installed over existing tiles.

- 2440 x 1220mm – Minimum panel size (Actual size may be slightly larger to allow trimming to match grout lines between panels)
- 3mm waterproof wall panel (compact grade laminate)



Clean crisp lines and fresh looks created using White Small Gloss Embossed Tiles and Corten Elements (Linda Barker Collection) around the shower with Satin Silver Profiles and Bath & Shower Tray Seal Kit.



Light Grey Stone Embossed large format tile in the shower cubicle is complemented by Henley Gloss wall panels (Heritage Collection) and Urban Athracite Grey flooring (Click Range). Satin Silver Profiles, Hydrolock joint and Light Grey Sealant finish the look.

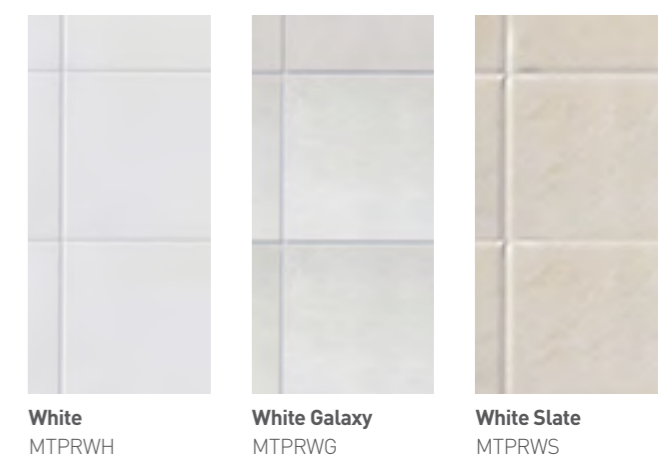
Large Format Tile

Evoke a sense of executive style with our large format tiles in three subtle shades. Each style is embossed with a slight stone texture for authenticity and style. *Size of each tile: 560 x 560mm*



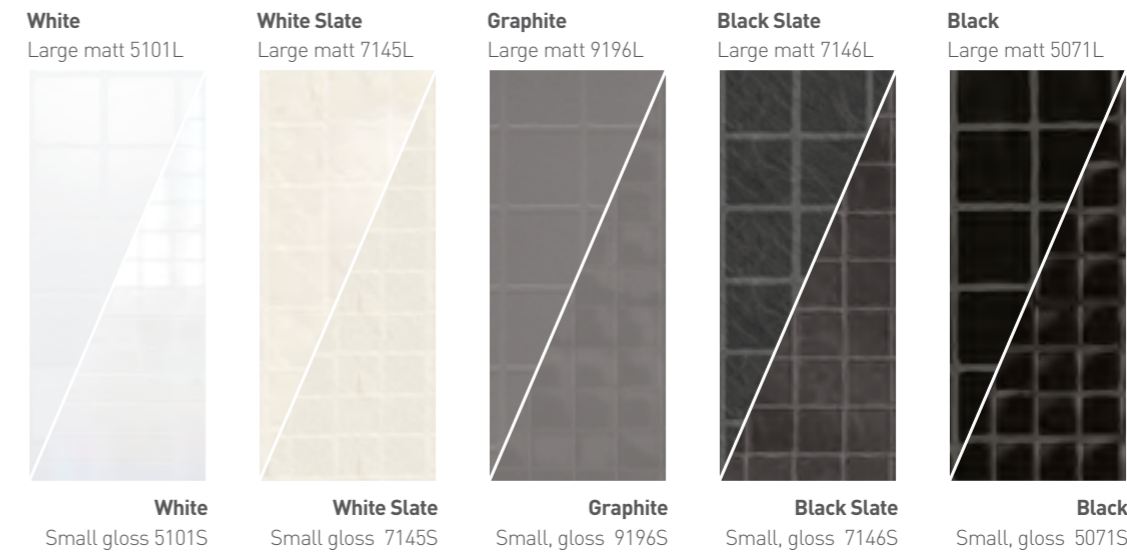
Bold Bevels

Designed to suit both modern and traditional rooms, the Bevel with a gloss finish is a timeless choice for quickly refreshing and updating any room. *Size of each tile: 300 x 200mm*



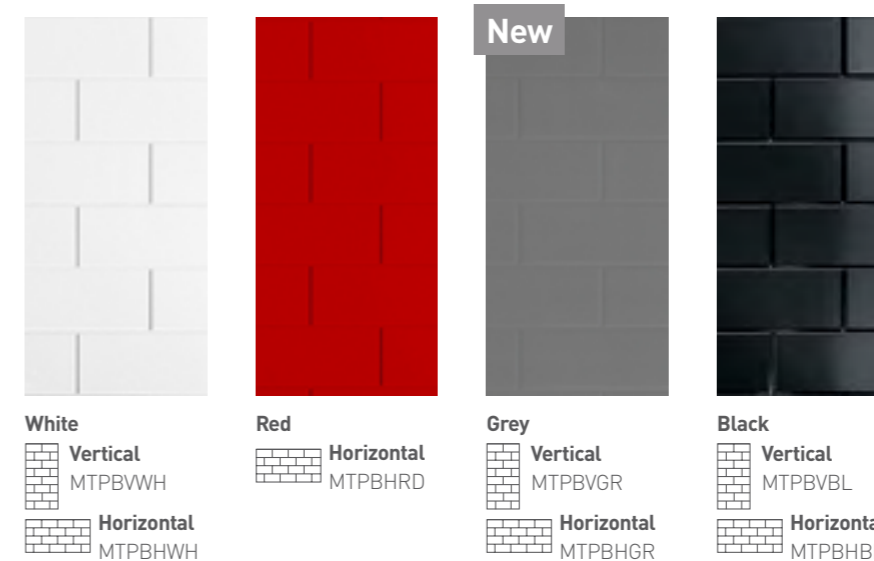
Embossed

This collection of beautiful double-faced embossed tile panels offers a stylish alternative to real tiles. Choose between the fashionable matt finish of a larger tile or a chic glossy mosaic finish of the smaller tile. *Size of each tile: Gloss 23.5 x 23.5mm and Matt 47 x 47mm.*



Classic Brick

Inspired by iconic tiles of the London Underground, the Brick Tile panel introduces a rich design heritage into your home. Brick Tile is available in a choice of gloss finishes. *Size of each tile: 75 x 200mm.*



Black Brick panels with Black Profiles and Black Onyx (Click Premier) flooring.

Reflect

Glass alternatives for a modern twist

Refresh your bathroom with a beautiful and hard-wearing faux glass.

If you want the sleek, contemporary look of glass, the Reflect Range is for you. Made from a tough dual layered acrylic, these 4mm thick panels have a stunning depth to create the illusion of real glass.

Available in a hand-picked collection of colours. Reflect Range is the perfect choice for a stunning design statement in your bathroom.



The illusion and lustre of real glass: Aqua (Reflect) feature walls with colour matched Aqua Profiles and Black Onyx (Click Premier) flooring.

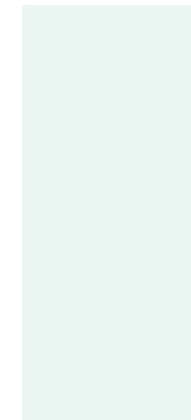
- 2440 x 1220 x 4mm
- Dual layered acrylic (4mm thick with toughened surface)
- Super gloss finish
- Easier to cut and fit than glass



Reflect can be paired with simple painted walls or to combine with panels from the other Multipanel ranges.



White
MRFWHI



Aqua
MRFAQU



Grey
MRFGRY



Red
MRFRED



Black
MRFBLK

Get this look

A bathroom of bold contrasts - modern Grey Reflect wall panels with new Grey Profile heighten the dramatic impact of Black Brick Tile panels and Silver Opal flooring (Click Premier range).

Economy

Simple uncompromising quality

Stylish and practical wall panels, perfect for any budget

Cost-effective without compromising on quality or looks, the Economy Range is the perfect choice. It is quick and easy to fit thanks to the innovative tongue and groove system. These sleek and practical PVC wall panels are available in a choice of attractive designs.

- 2400 x 1000 x 10mm PVC panels
- Tongue and groove installation
- Class 1 fire rating



Roman Marble PVC panels (Economy Range) and Markham Oak flooring (Click Range).



Get this look

Economy panels provide style, high quality and cost effectiveness for your home. Here in the bath area using Urban Concrete Economy panels with Grey Profiles and Bath & Shower Tray Seal Kit. The other walls are Henley Gloss (Heritage Collection) and the flooring is Espana Cadiz (Click range).

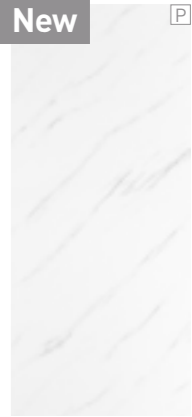
T Textured P Premier



Snow Drift
MPPSD



Sunlit Quartz
MPPSQ



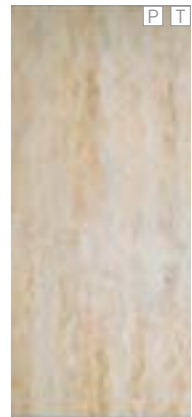
White Marble
MPPWHM



Roman Marble
MPPRM



Byzantine Marble
MPPBM



Aruban Sand
MPPAS



Rustic Brick
MPPRB



Urban Concrete Grey
MPPUCG



Urban Stucco Venetian
MPPUSV



Urban Stucco Grey
MPPUSG



Moonlit Quartz
MPPMQ



Obsidian Marble
MPPOM

Click flooring

Beautiful flooring that clicks into place

Luxury tile, stone and wood effect vinyl flooring with interlocking installation

Enjoy the style and beauty of luxurious flooring with incredibly easy installation. Our Click Range requires no glue and is easy to fit. A simple interlocking tongue and groove system means the flooring clicks together effortlessly.

Choose luxury vinyl tiles in stone, sparkle or timber effect flooring. The range offers all the chic styling of ceramics, stone or wood with benefits of being warm and quiet underfoot.

Click flooring features a commercial grade 0.5mm wear layer and is coated with ceramic beads for a durable finish.

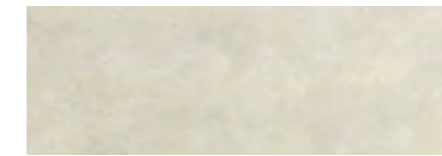
- No need for adhesives or underlay
- 1.84m² coverage per pack (except Driftwood Grey Oak 1.86m²)
- Wood planks supplied in packs of 8, each 1210 x 190mm (except Driftwood Grey Oak, in packs of 7, each 1210 x 220mm)
- Tiles supplied in packs of 10, each 605 x 304mm
- Commercial grade wear layer to meet industry standards
- 5.0mm vinyl, 0.5mm wear layer
- R10 slip resistance
- Suitable for use with underfloor heating
- Not suitable for areas exposed to direct sunlight for prolonged periods



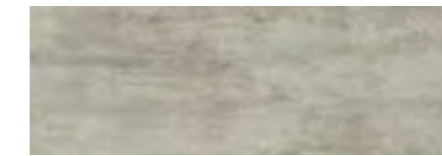
Concrete Formwood in the shower area (Linda Barker Collection) with Polished Silver Profiles, Bath & Shower Tray Seal Kit complemented by White Embossed Tile panels around the sink. Driftwood Grey Oak (Click range) flooring completes the look.

Tiles

Click luxury vinyl tiles are designed to mimic the natural beauty of real stone and marble. Adding a luxurious touch to your home, this beautiful textured flooring creates a welcoming and warm space to relax in.



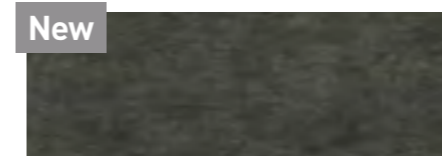
Rimini MTFCRIM



Piemonte MTFCEPIE



Urban Anthracite Grey MTFCUAG



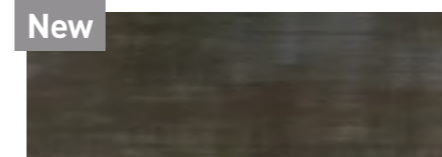
Medina Black available February 2019 MTFCMBL



Espana Cadiz MTFCEESC



Sicilia MTFCSIC



Urban Graphite Grey MTFCUGG

Timber

These beautiful timber effects will instantly add luxury to your interiors. Choose from the traditional Markham Colhoun Oak or richness of Warm Smoked Oak to the understated Aspen Oak Black for a more minimalist look.



Markham Calhoun Oak MTFCMAR



Aspen Oak Limed MTFCASP



Coastal Grey Oak MTFCCOA



Driftwood Grey Oak (1210 x 220mm) MTFCDGO



Natural Weathered Oak MTFCNWO



Warm Smoked Oak MTFCWSO

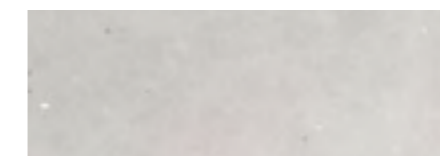


Aspen Oak Black MTFCAOB

Premier



White Diamond MTFCDIA



Silver Opal MTFCOPA



Pearl MTFCPEA



Black Onyx MTFCONY

Sparkle

Offering all the benefits of the Click range, with its simple installation, Sparkle comes with added embedded metallic foils to create an unforgettable design.

WetFlor®

Modern safety flooring

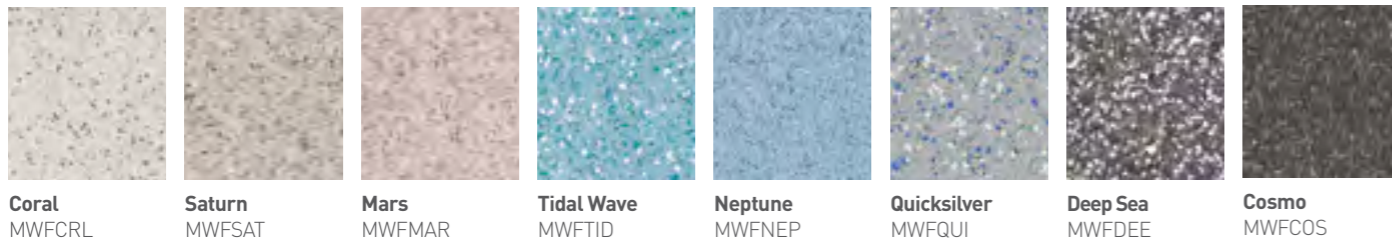
Stylish and durable slip resistant flooring for your Multipanel wetroom

Our vinyl WetFlor® provides a practical and safe solution for the busy family home. Its impressive slip resistance and easy maintenance makes it a great choice for those with young children or where extra traction is required.

The perfect complement to our Multipanel wall coverings to create a superb high quality bathroom solution with beautiful looks that will last.

Get this look

Cosmo (WetFlor®) enhanced by Henley Gloss (Heritage Collection) and Embossed White Tiles wall panels with Polished Silver Profiles.

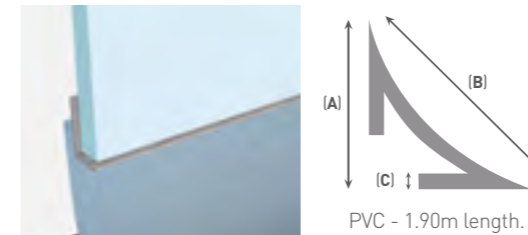


Tidal Wave (WetFlor)

WetFlor® Technical details

- 2.0mm thick vinyl
- >36 RRL pendulum test (Wet)
- R11 slip resistance
- 1.9m wide roll, metre cut lengths available up to 10m (full roll)
- Suitable for use with underfloor heating

Coving profile



Available in two sizes:

	Type 18	Type 35
A	18mm	35.5mm
B	25mm	50mm
C	1.3mm	1.4mm

Welding rod



Multipanel WetFlor® welding rods ensure a watertight seal between sheets and at coved corners. The 2mm wide rods are available by the linear metre in a base colour matching your chosen WetFlor® décor.

Installation guides



For full installation guidelines including a detailed animation on WetFlor® and panels for Multipanel bathrooms, wetrooms and kitchens please visit our website at multipanel.co.uk/installation

Recommended adhesive



The use of F84 Two Part Reactive Flooring Adhesive from F Ball for fixing WetFlor® to the substrate is recommended. Not sold by Multipanel but widely available.

Ceilings

The final touch to your Multipanel collection

Complete your bathroom design with a simple paint and plaster-free ceiling

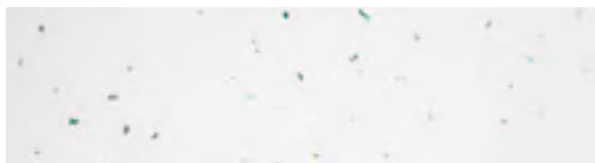
Simply install the panels using the tongue and groove system for an easy and quick refurbishment. Innovative built-in protection prevents moisture and damp. Simply wipe clean in seconds.

Available in a wide choice of finishes to match all our wall panels, our ceilings are the perfect finishing touch.



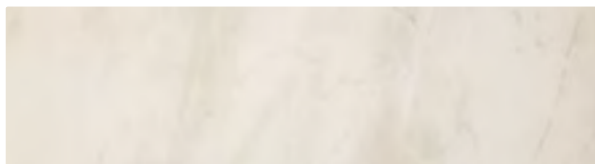
White Matt

MCPMW



White Sparkle

MCPWS



Soft Grey Marble

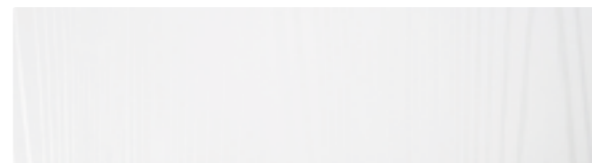
MCPSGM

- 8mm hollow core PVC
- 2700 x 250mm tongue and groove panels
- 2.7m² coverage per pack
- Class 1 surface spread of flame
- All Multipanel Ceiling décors apart from White Matt and White Ash are supplied in a high gloss finish.
- Do not use in areas subject to temperatures over 60°C (keep out of direct sunlight).



White Gloss

MCPGW



White Ash

MCPWA



Pergamon Marble

MCPPM



The White Gloss ceiling in this bathroom creates a fabulous light reflection. Connected using Type N internal corner profile in White.

Multipanel in the kitchen

Perfect for kitchen splashbacks

Easy-cleaning: stunning looks

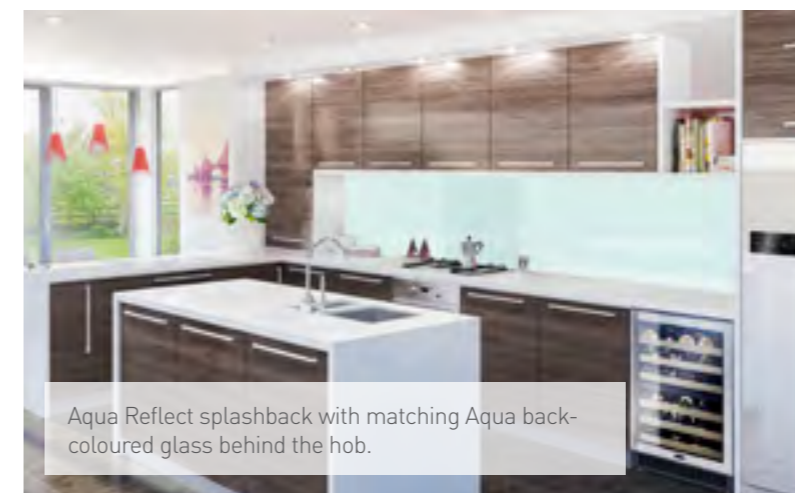
Multipanel walls can also be used as splashbacks in your kitchen when positioned horizontally. Choose from any of the Linda Barker, Heritage and Classic collections, or the Tile or Reflect ranges for an exciting feature to enhance your kitchen.



Small Embossed Black Tile with stainless steel splashback behind the hob.

Combine Multipanel with heat-resistant hob splashbacks

Our stainless steel and back-coloured glass splashbacks are durable and heat resistant. A glass hob panel, colour-matched to a Reflect Range splashback will give you a spectacular finish. Alternatively stunning results can be achieved by pairing your stainless steel or back-coloured glass hob with panels from other Multipanel collections.



Aqua Reflect splashback with matching Aqua back-coloured glass behind the hob.

Combine with stainless steel hob splashback

- 760 x 700mm / 760 x 1000mm
- 1mm thick stainless steel wrapped around 6mm/12mm thick moisture resistant MDF
- Use 7mm thick stainless steel hob splashback with Multipanel Reflect and Tile range
- Select 13mm thick stainless steel hob splashback with Linda Barker, Classic and Heritage collections


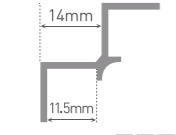
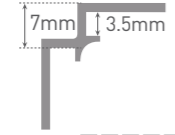
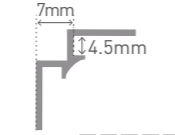
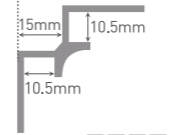
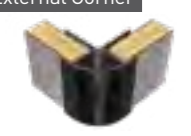
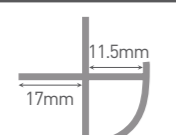
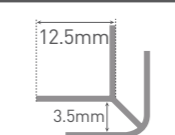
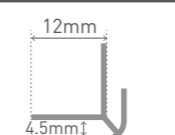
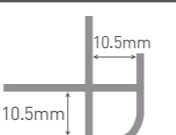

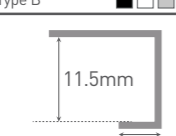

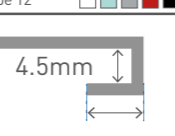
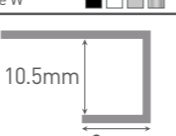

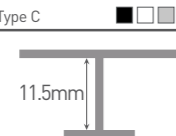

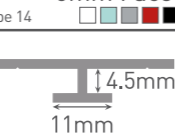

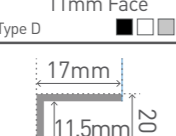
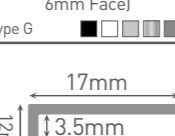

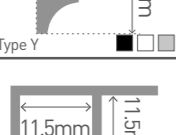
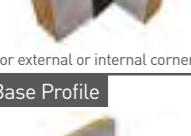
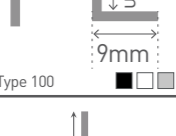

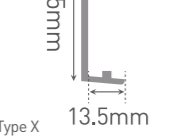
Combine Reflect range with back-coloured glass hob splashback

- 760 x 700mm / 760 x 1000mm
- 4mm thick toughened glass

Wall panel profiles

Effective, simple installation

Multipanel waterproof panels are specially designed for easy installation and maintenance. The panels can be bonded directly to almost any surface using Multipanel High Grab Adhesive for flexibility and a clean look. Multipanel walls and ceilings are fitted together with aluminium or PVC profiles, and silicone sealed at all joints to ensure a watertight result. Full installation guidelines are supplied with the product and are available at multipanel.co.uk.

Wall Panel Profiles	Linda Barker, Classic, Heritage Aluminium 11.5mm thick	Tile Aluminium 3.5mm thick	Reflect Aluminium 4.5mm thick Colour matched to panels	Economy PVC
Internal Corner 	Type A 	Type J 	Type 10 	Type V 
External Corner 	Type B 	Type H 	Type 12 	Type W 
End Cap (L-Shaped) 	Type C 	Type F 	Type 14 	Type U 
Mid Joint 	Type D 	Type G 	Type 16 	
Last Corner 	Type Y 	Type Z 		
Flush Corner 	Type 100 			
Base Profile 	Type X 			
Quadrant End Cap 	Type E 			

Available colours



New Grey profile for Tile, Reflect & Economy

Available Lengths

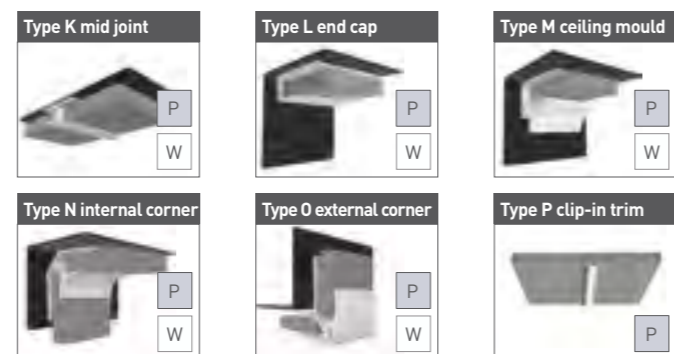
Profiles are supplied in 2450mm for all ranges except Economy which is supplied in 2400mm.

Please Note

All 3D drawings are a generic representation of the profile type. Dimensions specific to each range are shown on the line drawings.

Ceiling Profiles

Tongue and groove Ceiling panels provide the quickest way to redecorate without plaster and paint. Ceiling profiles complete the look and make installation easy.



- Type M profile (Silver) is supplied with two silver strips above and below the white section.
- Type P profile is only available in bright polished silver
- Supplied in 2.7m lengths

Bath & shower tray seal kit

The little touches



Multipanel Seal

The innovative and stylish two part shower tray and bath sealing system from Multipanel comprises a PVC strip and a high performance white silicone.

The 'movement joint' expands and contracts to offer a stylish and reliable bottom seal for Linda Barker Collection, Classic, Heritage and Economy ranges.

Seal and protect your wall panels for years with this innovative system that also makes it easier to install.

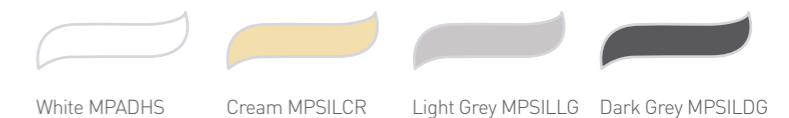
Sealant & Panel Adhesive

This high quality sealant and panel adhesive is specifically developed for Multipanel panels and is available in 4 colours.

Clear and white silicone sealant also available.



Panel adhesive and sealant



Silicone sealant



Installation & care kit

The finishing touch

Designed to be the perfect finishing touch for a Multipanel installation. This kit contains tools to de-burr any cut panels and sealant tools to ensure a beautiful finish. Cleaning solution and high quality microfibre and lint free cloths will leave the installation gleaming. The kit can then be left with the homeowner during the life of the panels.

Contains:

- Pair of Nitrile Gloves
- Sanding Block & 240 Grit Sandpaper
- Lint Free Cloth
- Microfibre Cloth
- Magic Eraser Cellulose Sponge
- Sealant Profiling Tool
- Acetone Cleaner
- Laminate Cleaner Nozzle
- Antibacterial Laminate Cleaner
- 2 x Alcohol Wipe Sachets
- Sealant Excess Removal Tool

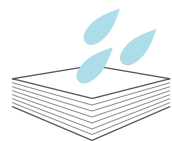


MPICKIT

Waterproof wall panel leaders

Best selling waterproof wall panels because:

Benefits:



Completely waterproof and no need for grout



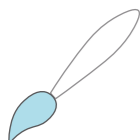
Easy to keep clean, No grout to discolour over time



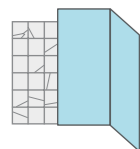
Virtually seamless watertight joint using Hydrolock®



Quick and easy installation, no need for a specialist tiler



Huge range of on-trend colours and textures



Panels can be fitted over existing tiles



Peace of mind with a 15 year warranty on Linda Barker, Classic and Heritage collections

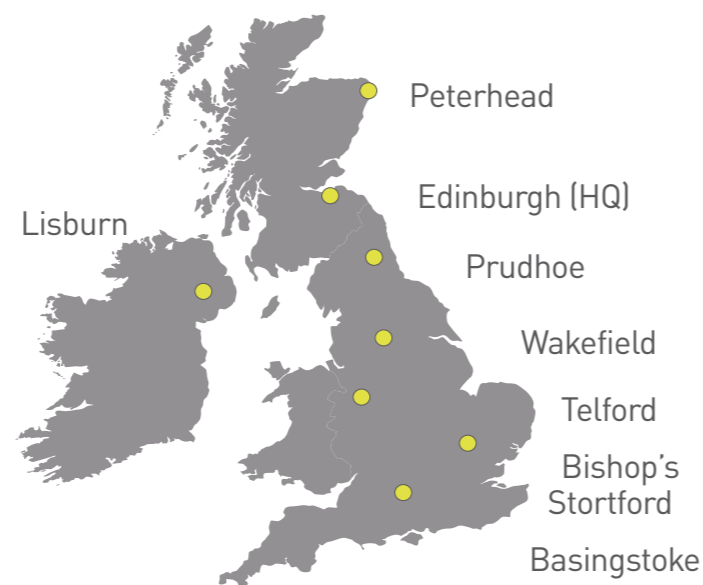


Supporting responsible management of the world's forests



Linda Barker, Classic and Heritage collections are all manufactured to exacting standards in our UK facility

Nationwide distribution



Unrivalled expert experience

135 years

Multipanel is backed with over 135 years of manufacturing expertise to deliver superb quality.

Largest range of wall panel décors

Multipanel's large range of on-trend stylish décors will fit any bathroom.

Thousands of distributor branches

Multipanel is available from thousands of distributor branches nationwide delivering an accessible local service. Find your nearest showroom at multipanel.co.uk

8 distribution centres

8 Multipanel distribution centres ensuring fast and effective delivery.

Next steps...

To make the most of Multipanel

Visit our website multipanel.co.uk for much more.

Inspiration

Inspiration on how to decorate your bathroom with celebrity interior designer Linda Barker

Visualiser tool

Experiment with different colours with our online visualiser tool

Find a showroom

Find your nearest showroom to see where you can see Multipanel on display.

Order samples

Order samples online to find the ideal match for your home.

Find a local Multipanel installer

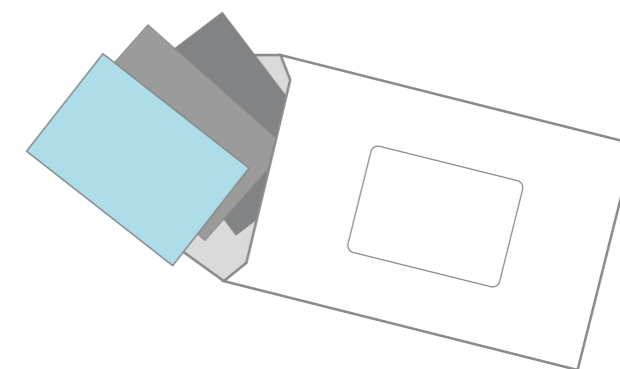
Our useful service to help you find a local installer.

Installation instructions

Installation instructions and animation videos to help you fit our wall panels and profiles.

Share your photos

Please send us photos of your projects, we would love to see them. Each month we award a £100 John Lewis voucher to the best project. Use the hashtag #multipanel, or send your photos to info@multipanel.co.uk



Follow us on social media

Facebook, Instagram, Pinterest, Twitter

Peace of mind with high quality performance & warranty guaranteed

- All Multipanel collection products supplied from 1st July 2013 are CE marked
- Declarations of all product performance are available at multipanel.co.uk
- Multipanel 15 year* warranty covers the unlikely failure of the product, and will be invalid if any published installation and care guidelines are deemed not to have been followed
- Installation guidelines and full details on each product warranty can be downloaded from multipanel.co.uk, or e-mailed, faxed or posted on request.

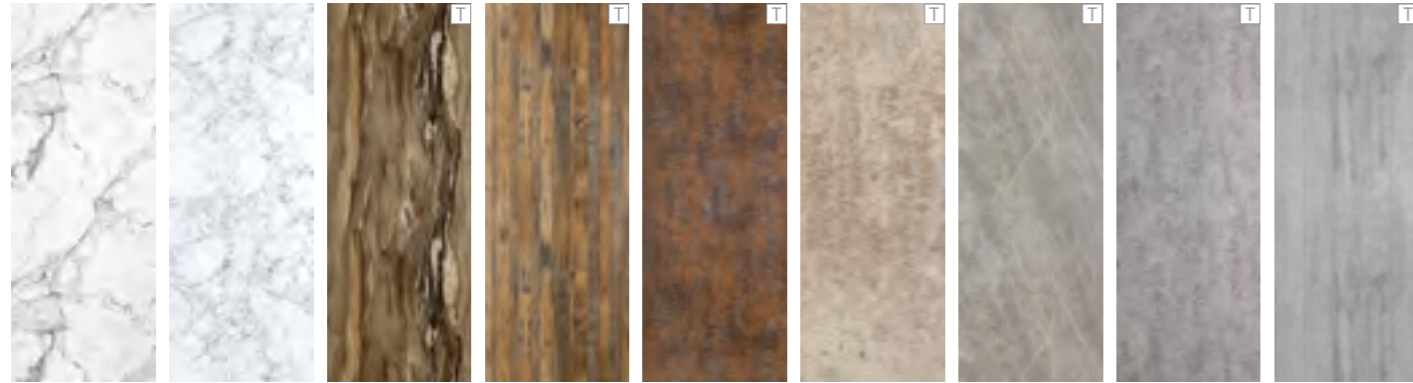
* Applies to Multipanel Linda Barker, Heritage and Classic Collections. Full warranty details for all products are available at multipanel.co.uk

Please note: all images and samples shown in this brochure are a representation of the actual finish from a small part of a panel. Colour, pattern and scale may vary on the finished product supplied. The amount of pattern on Multipanel Floors, (Click Tiles) varies between tiles to ensure the most realistic effect is created across the whole installation. Therefore, the printed samples may not represent the overall effect once the floor is laid.

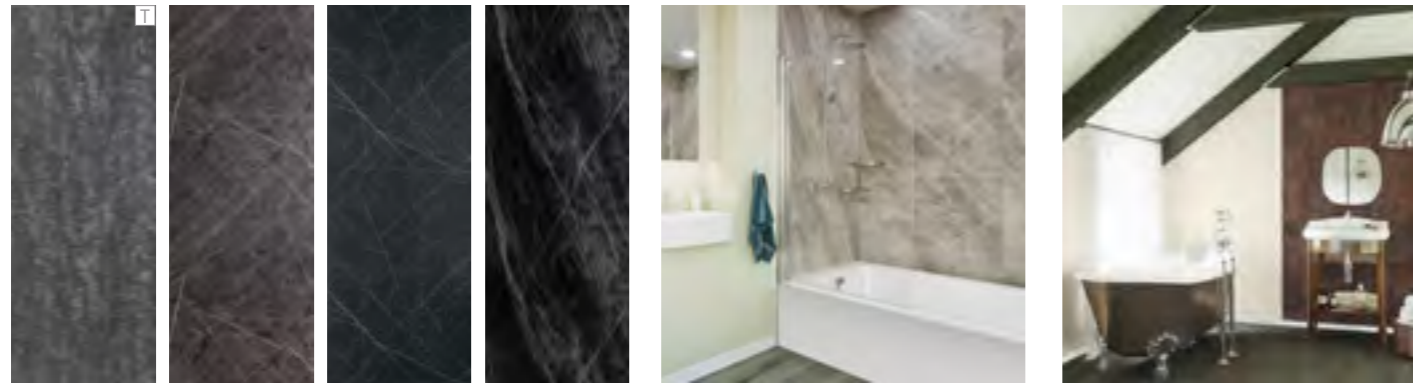
Multipanel waterproof walls

Linda Barker Collection

11mm thick waterproof wall panel with 9mm high quality water resistant hardwood core, pages 6-9



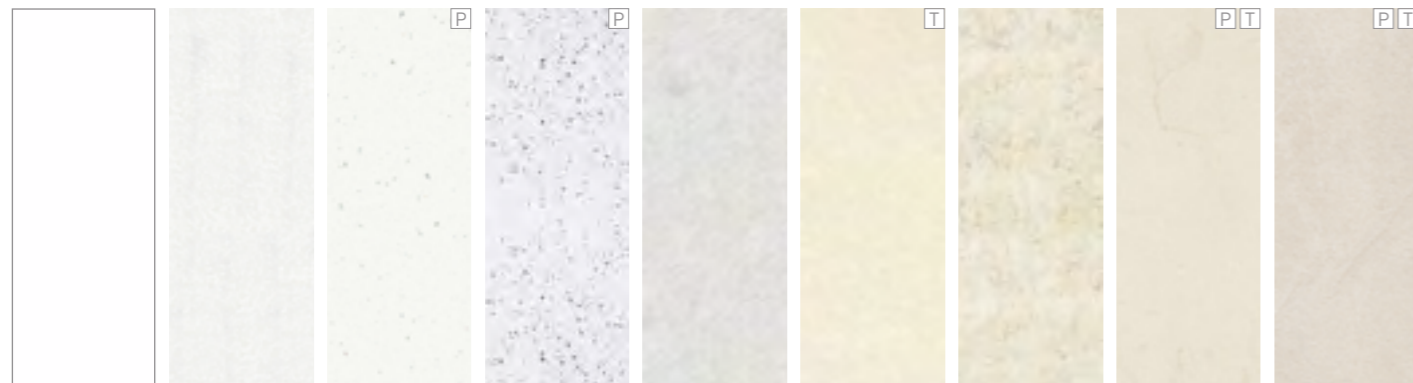
Calacatta Marble 3460 **Bianca Luna** 3421 **Dolce Macchiato** 3478 **Salvaged Planked Elm** 9480 **Corten Elements** 8832 **Stone Elements** 8831 **Soapstone Stellar** 3459 **Concrete Elements** 8830 **Concrete Formwood** 6362



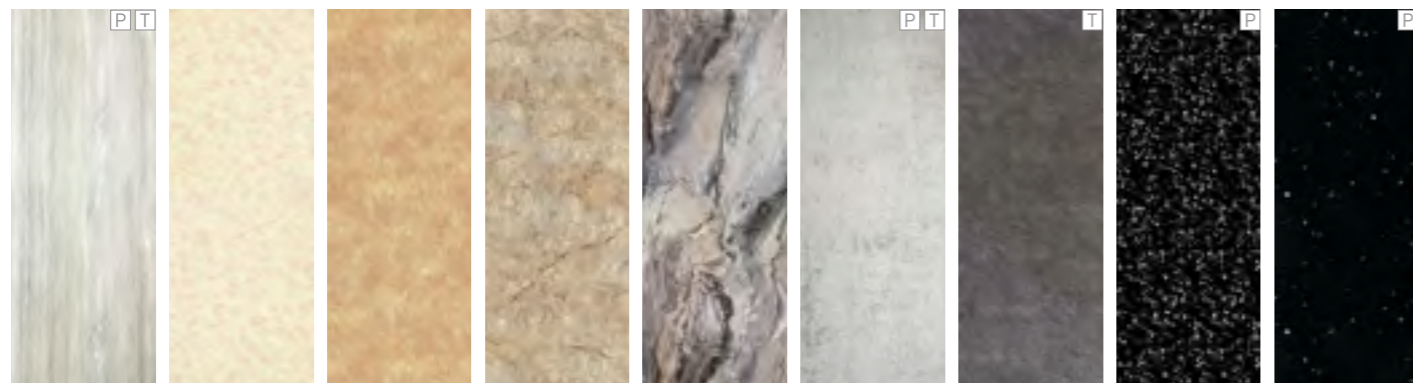
Graphite Elements 8833 **Ferro Grafite** 9483 **Nero Grafite** 9485 **Jet Noir** 3476 Soapstone Stellar wall panels. Corten Elements & Marfil Cream wall panels.

Classic Collection

11mm thick waterproof wall panel with 9mm high quality water resistant hardwood, pages 10-13



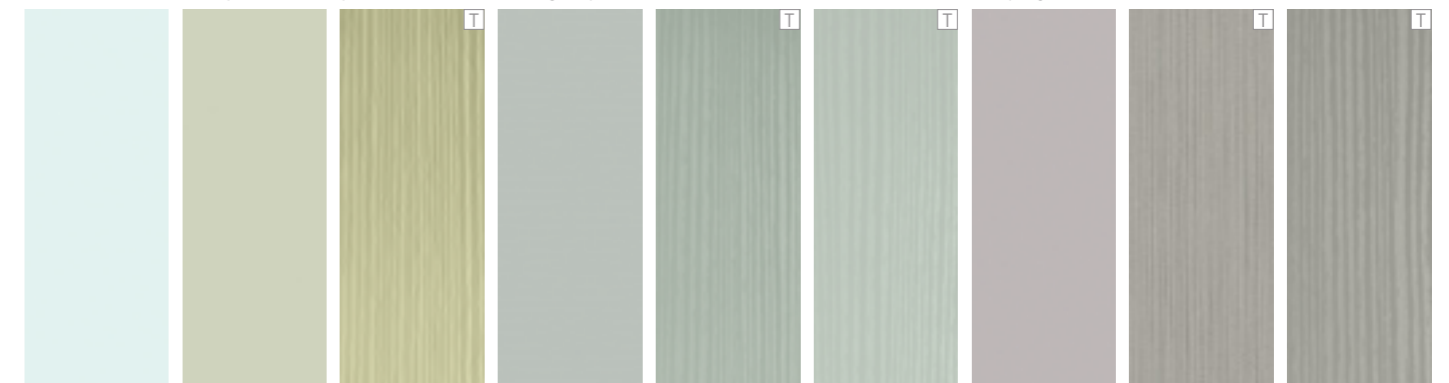
White 685 **Frost White** 049 **White Snow** 3308 **Blizzard** 6030 **Classic Marble** 141H **Riven Marble** 9241 **Grey Marble** 139H **Marfil Cream** 9477 **Warm Mica** 835



Jupiter Silver 3458 **Natural India** 194H **Travertine** 3526 **Antique Marble** 701 **Cappuccino Stone** 7256 **Arctic Stone** 3331 **Riven Slate** 2859 **Twilight** 6033 **Stardust** 3306

Heritage Collection

11mm thick waterproof wall panel with 9mm high quality water resistant hardwood core, pages 14-15



Kew Gloss 10665 **Esher Matte** 5344 **Esher Linewood** L5344 **Faversham Matte** 5349 **Faversham Linewood** L5349 **Marlow Linewood** L7927 **Henley Gloss** 10232 **Sarum Twill Plex** 8827 **Winchester Linewood** L7961

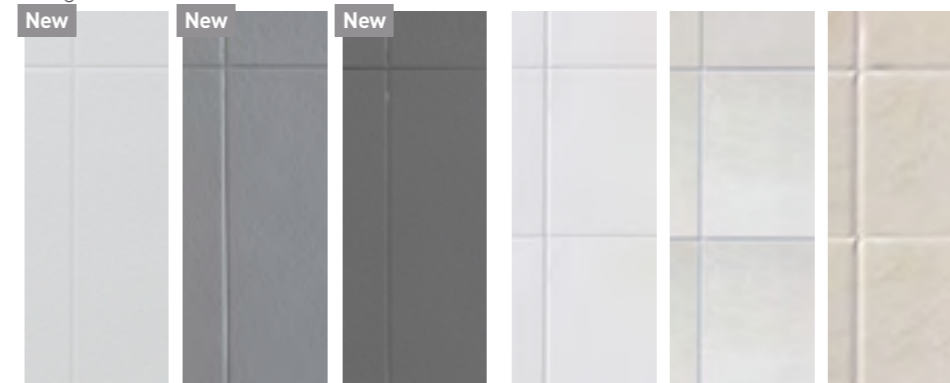


Neutral Twill Plex 8826 **Alabaster Oak** 8854 **Rural Oak** 8853 **Delano Oak** 8966 **Logan Oak** 8967 **Graphite Twill Plex** 8829 Faversham Matte, Esher Matte and Henley Gloss.

Tile

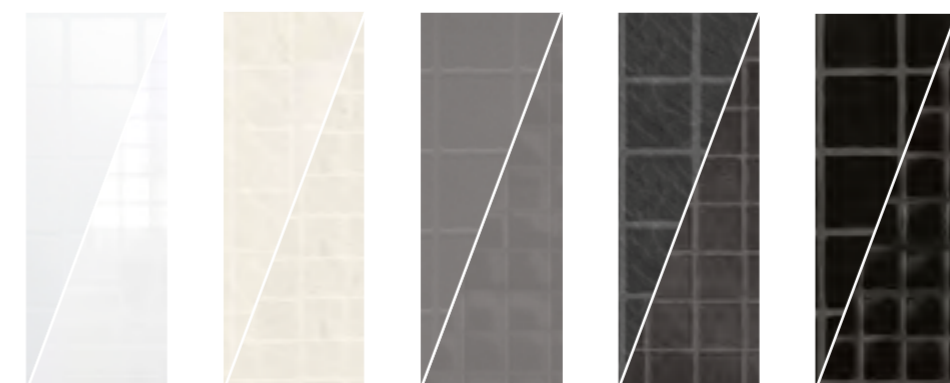
3mm waterproof wall panel (compact grade laminate), pages 16-17

Large format tile



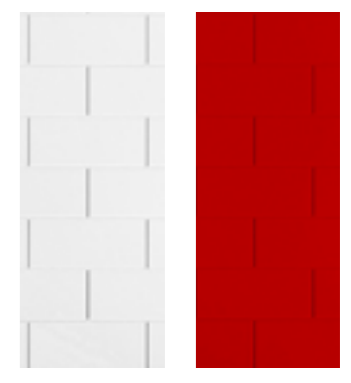
White Stone Embossed SS5101 **Light Grey Stone Embossed** SS9385 **Charcoal Stone Embossed** SS5071 **White** MTPRWH **White Galaxy** MTPRWG **White Slate** MTPRWS

Embossed

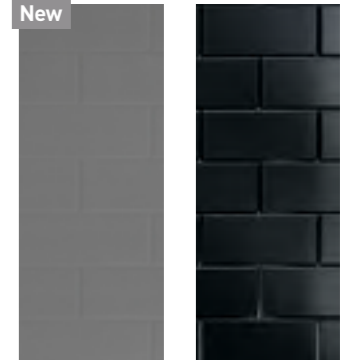


White Large matt 5101L Small gloss 5101S **White Slate** Large matt 7145L Small gloss 7145S **Graphite** Large matt 9196L Small, gloss 9196S **Black Slate** Small, gloss 7146S **Black** Large matt 5071L Small, gloss 5071S

Brick



White Vertical MTPBWH Horizontal MTPBHHW **Red** Horizontal MTPBHRD



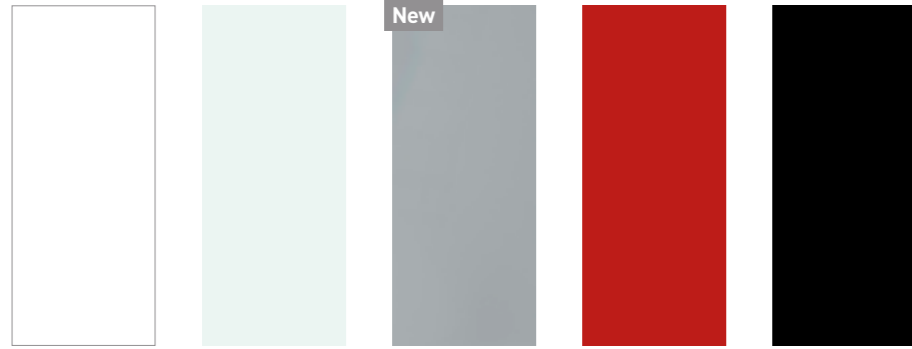
Grey Vertical MTPBVGR Horizontal MTPBHGR **Black** Vertical MTPBVBL Horizontal MTPBHBL

Multipanel waterproof walls (continued)

Reflect

Dual layered acrylic (4mm thick with toughened surface), pages 18-19

T Textured P Premier



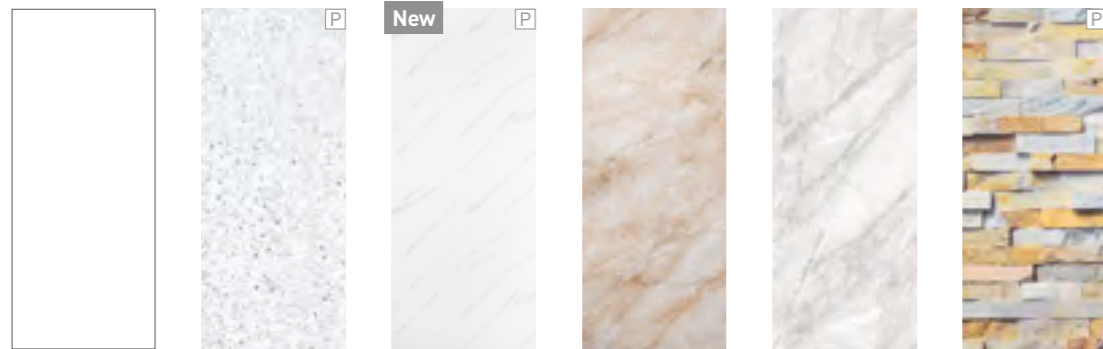
White MRFWHI **Aqua** MRFAQU **Grey** MRFGRY **Red** MRFRED **Black** MRFBLK



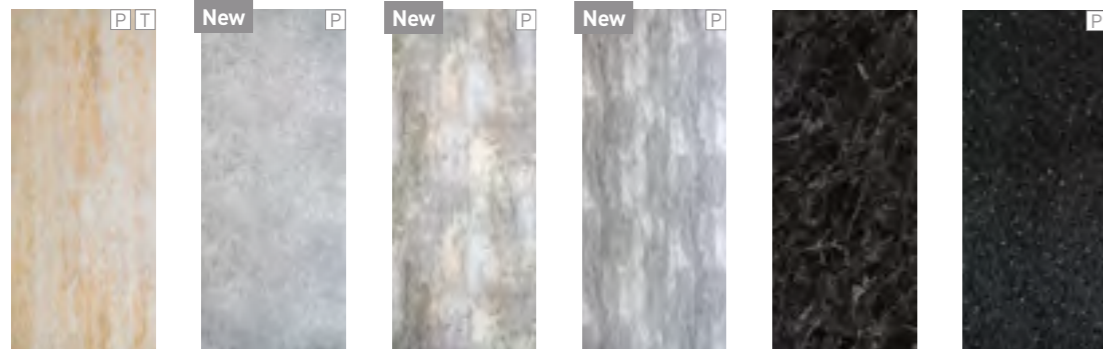
Aqua (Reflect) feature walls with colour matched Aqua Profiles.

Economy

2400 x 1000 x 10mm PVC panels, pages 20-21



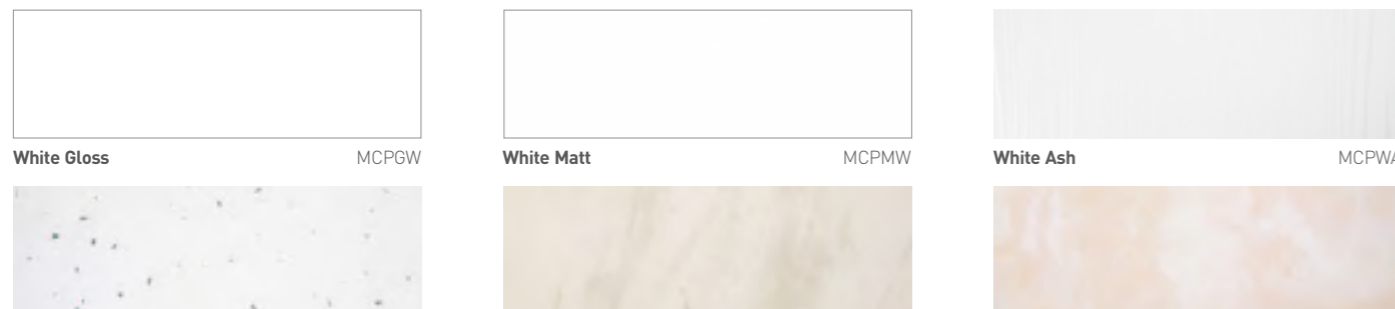
Snow Drift MPPSD **Sunlit Quartz** MPPSQ **White Marble** MPPWHM **Byzantine Marble** MPPBM **Roman Marble** MPPRM **Rustic Brick** MPPRB



Aruban Sand MPPAS **Urban Concrete Grey** MPPUCG **Urban Stucco Venetian** MPPUSV **Urban Stucco Grey** MPPUSG **Obsidian Marble** MPPOM **Moonlit Quartz** MPPMQ

Ceilings

PVC tongue and groove, easy clean ceiling panels, pages 26-27



White Gloss MCPGW **White Matt** MCPMW **White Sparkle** MCPWS **White Ash** MCPWA **Soft Grey Marble** MCPSGM **Pergamon Marble** MCPPM

Floors

Click Premier flooring

Commercial grade luxury vinyl tile, with interlocking joints, and embedded sparkle, page 22-23



White Diamond MTFCDIA **Silver Opal** MTFCOPA



Pearl MTFCPEA **Black Onyx** MTFCONY



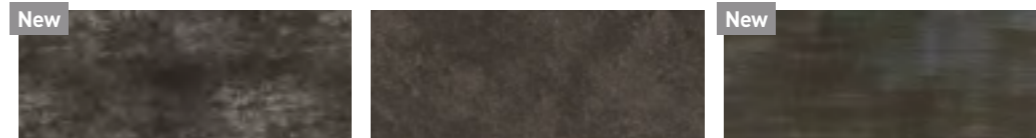
Sicilia tiles (Click flooring) with Graphite Elements (Linda Barker Collection) wall panels

Click flooring

Commercial grade luxury vinyl tile, with interlocking joints, pages 22-23



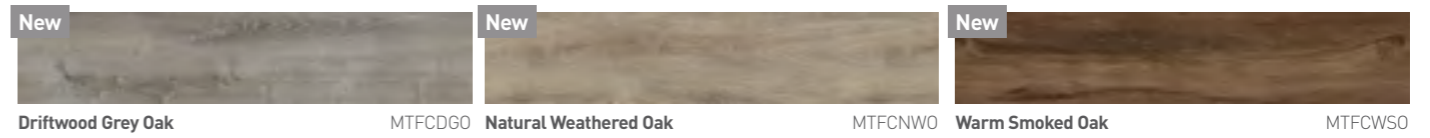
Rimini MTFCRM **Piemonte** MTFCPIE **Urban Anthracite Grey** MTFCUAG **Medina Black** MTFCMBL



Espana Cadiz MTFCESC **Sicilia** MTFCSIC **Urban Graphite Grey** MTFCUGG



Markham Calhoun Oak MTFCMAR **Aspen Oak Limed** MTFCASP **Coastal Grey Oak** MTFCCOA



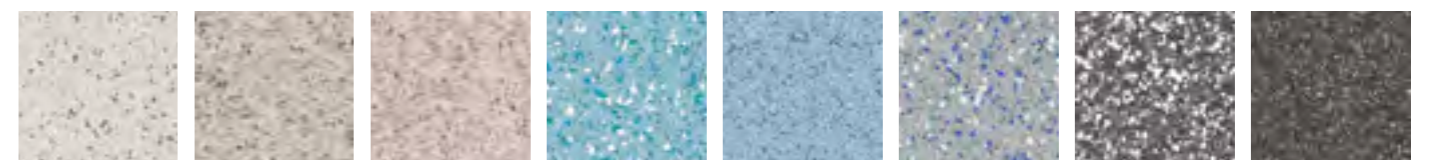
Driftwood Grey Oak MTFCDGO **Natural Weathered Oak** MTFCNWO **Warm Smoked Oak** MTFCWSO



Aspen Oak Black MTFCAOB

WetFlor®

Modern safety flooring, durable and slip-resistant, pages 24-25



Coral MWFCL **Saturn** MWFSA **Mars** MWFMA **Tidal Wave** MWFID **Neptune** MWFNE **Quicksilver** MWFQI **Deep Sea** MWFDE **Cosmo** MWFCS



MULTIPANEL®

Don't tile it. Multipanel it.

 @Multipanel_It

 Multipanelit

 Multipanel

 multipanel_it



Grant Westfield holds Chain of Custody certification. Please contact us for information on compliance status of individual timber based products.

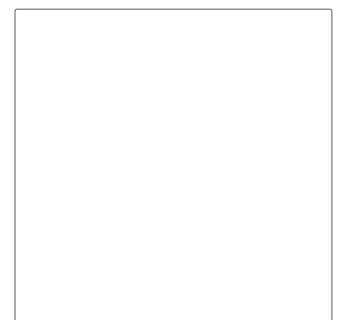


Multipanel® is a registered trademark of Grant Westfield Ltd.

multipanel.co.uk

Multipanel, Westfield Avenue, Edinburgh, EH11 2QH
t. +44(0)131 290 2862 | f. +44(0)131 337 9241 | e. info@multipanel.co.uk

© Grant Westfield 2019. All rights reserved.



M_2019_001