



E-TEC SYSTEM BOILERS

Key features:

- + Stainless steel heat exchanger
- + High efficiency Grundfos pump and hydroblock assembly
- + Single electrode
- + Easy-access dry-change NTCs
- + Combined condensate and pressure relief valve connection
- + Zinc plated expansion vessel to prevent corrosion

**7 YEAR
WARRANTY**

**NEW
35kW**
now available

Boiler specifications

Model	Part number	CH output (kW)	Boiler dimensions H x W x D (mm)	Lift weight (kg)	Standard warranty	Modulation range	Max. horizontal flue length (m)	Max. vertical flue length (m)
E-Tec 20S	3.028469	26.1	712 x 440 x 255	32.2	7 yr	1:6	12	14
E-Tec 30S	3.028470	29.7	712 x 440 x 255	34.1	7 yr	1:6	12	14
E-Tec 35S	3.028471	32	712 x 440 x 255	35.1	7 yr	1:6	12	14

LPG models available

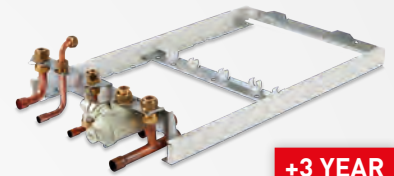
Accessories

500mm EasyFlue	1000mm EasyFlue	Vertical flue	PMK (black)	Pipe cross-over	Weather comp.	Trace heating kit	Climatic RF*	Climatic Hard Wired*	Comfort 2 channel
6.2000510	6.2001010	6.2000520	6.2001300	3.028658	3.022383	6.5500050	3.022143	3.022144	3.022142

*Alpha Diverter Valve Kit must be used.



ACCESSORIES



**+3 YEAR
WARRANTY**

PremierPack Extra
Part Number: 3.028667



**+1 YEAR
WARRANTY**

Cyclone Filter
Part Number: 3.024172



Three-Way Diverter Valve Kit
Part Number: 6.5500048

We recommend this is fitted with Climatic Control.



Comfort 2-Channel Control
Part Number: 3.022142