

FARMON BTW PAN & SEAT

ILLUSTRATION: FARMON BTW PAN

CODE: BTW PAN - POT071OP
SOFT CLOSE SEAT - POT082OP

COLOUR: WHITE



WEIGHT: WC PAN SEAT

NET: 25.5 KG 1.4 KG

GROSS: 26.5 KG 1.6 KG

STANDARDS: BS EN 997 WCs
BS 3402

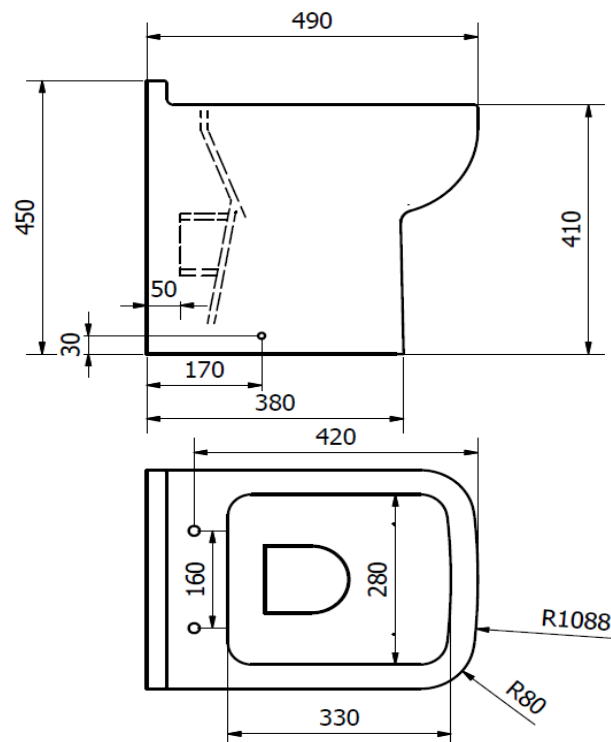
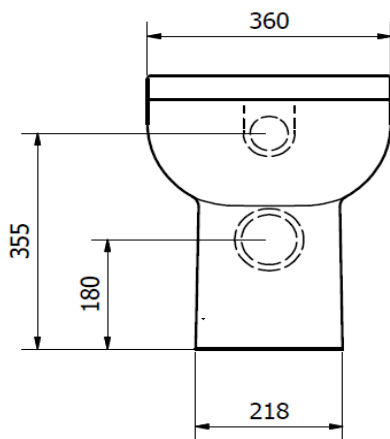


NOTES:

VITREOUS CHINA

WATER SAVING 6/4 LITRE FLUSH

SOFT CLOSE SEAT WITH QUICK RELEASE TOP FIX HINGE



BOX SIZES :- WC PAN = 380 X 480 X 520 mm / SEAT = 450 X 370 X 55 mm