



PRODUCT SPECIFICATION

FARMON C/C PAN, CISTERN & SEAT



ILLUSTRATION: FARMON C/C PAN &

CISTERN CODE: C/C WC PAN - POT0800P

C/C CISTERN - POT450SE

SOFT CLOSE SEAT - POT0820P

COLOUR: WHITE

WEIGHT: WC PAN CISTERN SEAT

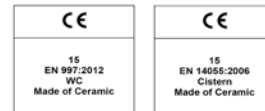
NET: 27.5 KG 11 KG 1.4 KG

GROSS: 28.5 KG 12 KG 1.6 KG

STANDARDS: BS EN 997 WCs

BS EN 14055:2010 FLUSHING CISTERNS

BS 3402

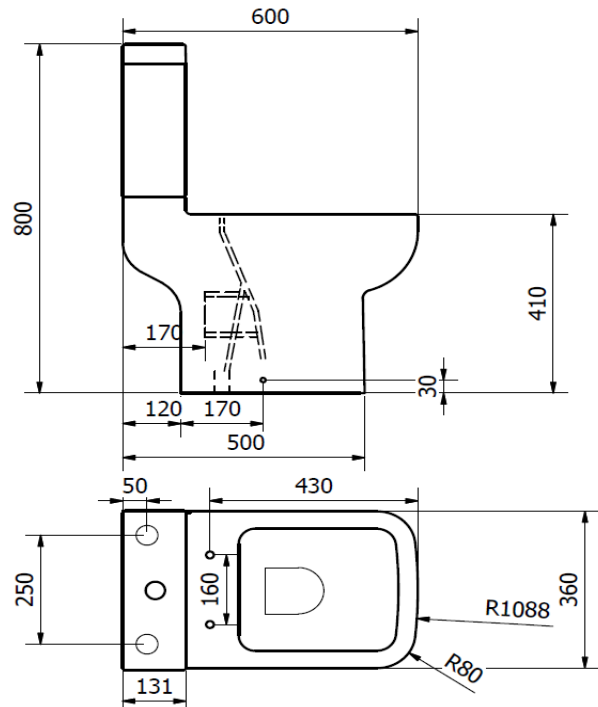
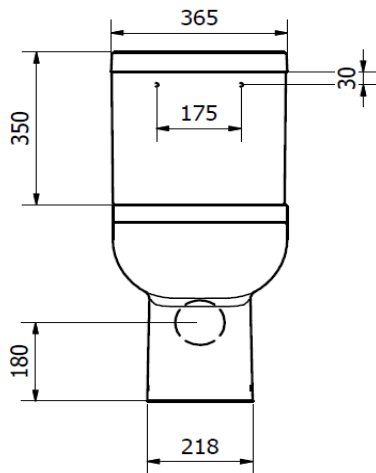


NOTES:

VITREOUS CHINA

WATER SAVING 6/4 LITRE FLUSH

SOFT CLOSE SEAT WITH QUICK RELEASE TOP FIX HINGE



BOX SIZES :- WC PAN = 390 X 490 X 640 mm / CISTERN = 1155 X 380 X 390 mm / SEAT = 450 X 370 X 55 mm