



# Soil & Waste

Product Specifications



Innovation & Expertise

## Marley Soil & Waste systems

Marley Plumbing & Drainage offer a comprehensive range of soil and waste systems. Available with a variety of jointing methods, Marley products are manufactured to exacting UK and European standards and are designed for use on commercial projects as well as housing developments.

PVCu soil & waste systems are available with push-fit or solvent weld joints, offering a choice of installation methods. The Marley Akatherm HDPE drainage range is a suitable replacement for cast iron; it is lightweight yet durable. For improved levels of soundproofing, the Marley dBlue acoustic soil & waste system is ideal.

### Product specification information

This guide contains product specification information for the Marley PVCu soil & waste, Marley Akatherm HDPE drainage and dBlue acoustic soil product ranges. A design and installation guide is available as a separate document. All documentation is available to download from [marleypd.co.uk](http://marleypd.co.uk)

### Production information

Information on the complete range of Marley Plumbing and Drainage system solutions is available to download from [marleypd.co.uk](http://marleypd.co.uk) or available via the literature hotline 01622 852585.



BS EN ISO 9001:2008  
BS EN ISO 14001:2004

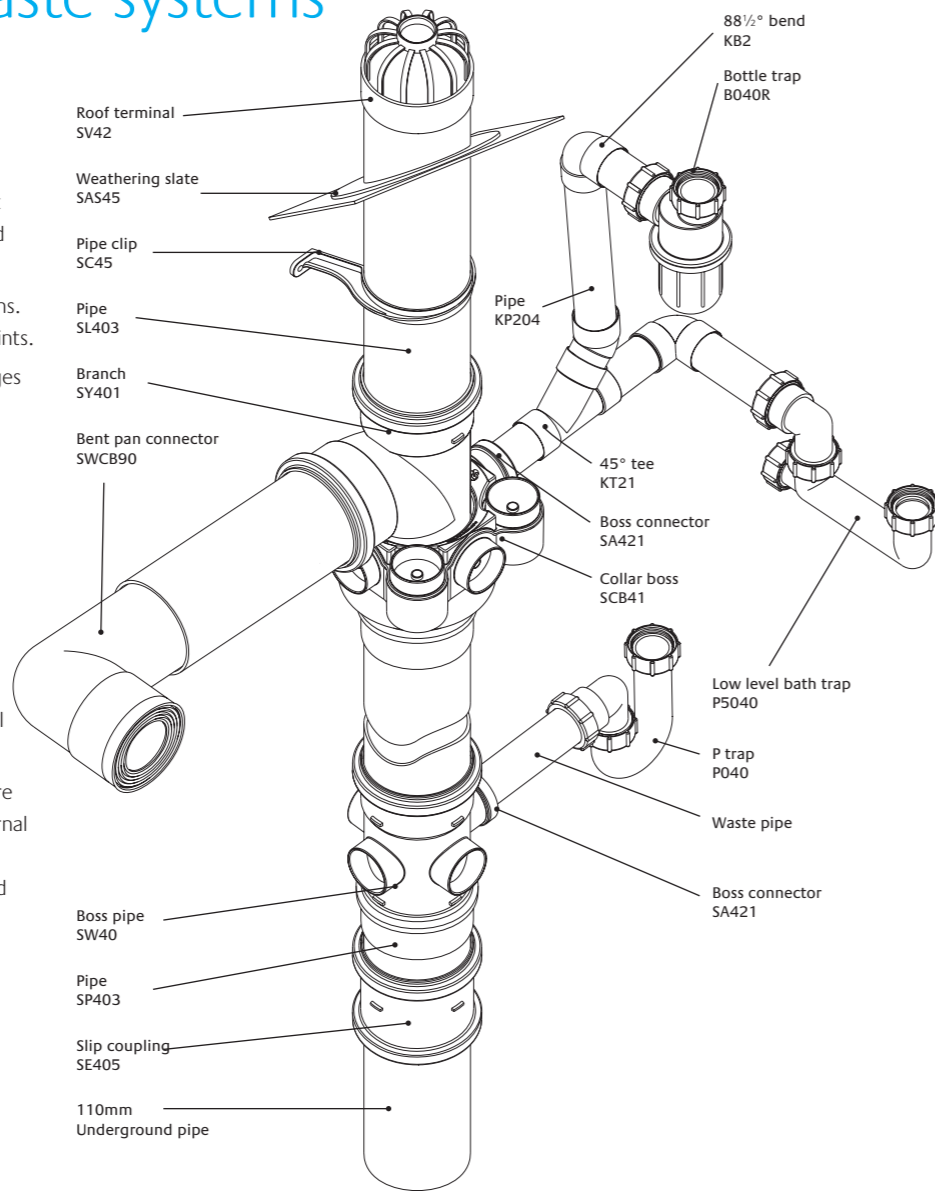
## Contents

4 PVCu Soil & Waste systems	41 WC connectors
5 Commercial applications	42 Universal push-fit WC connectors
<b>Waste</b>	
6 Solvent waste PVCu	43 WC manifold system
8 Solvent waste ABS	44 Fire protection
10 Push-fit waste polypropylene	45 Pipe support systems
12 PVCu condense and overflow system	45 Ancillary items
<b>Soil</b>	
14 Push-fit soil, PVCu	46 British & European standards
20 Solvent soil, PVCu	47 Marley system solutions
25 Accessories	
26 HDPE drainage	
38 dBlue acoustic drainage	



# PVCu soil & waste systems

- 82, 110 and 160mm push-fit and solvent weld soil systems incorporating socketed and plain ended pipe
- 110mm WC connectors for all BS WC pans. Available with solvent weld or push-fit joints.
- 110mm WC manifold system allows ranges of toilets to be connected horizontally. Ideal for commercial applications.
- 50 and 82mm floor outlet components are available as separate components or as an all in one trapped floor outlet.
- Fire sleeves and pipe wraps, providing up to 4 hours rating.
- 110 and 160mm pipe support components designed specifically to meet the needs of supporting horizontal or vertical suspended PVCu pipework.
- 82, 110 and 160mm pipes and fittings are also suitable for use as internal and external rainwater pipes to drain flat roofs and metal gutter systems on commercial and industrial buildings.



# Commercial applications

## Marley Akatherm HDPE

The Marley Akatherm HDPE drainage range is certified to BS EN 1519: 2000 (licence number KM 545820) An extension of the Marley soil & waste portfolio, the HDPE range offers an alternative solution to cast iron.

It is particularly suited for commercial applications or where a product with high impact or abrasion resistance is required, such as hospitals, hotels, schools, as well as residential buildings. HDPE will also cope with temperature variations of -40°C to 100°C.

The combination of the excellent material properties of HDPE with homogenous welded joints provides greater installation flexibility with a wide range of jointing options



## Key fitting: Akavent aerator

The need for secondary venting in high-rise buildings can be eliminated with the Akavent aerator. An Akavent aerator fitting breaks the fall on each floor and as a consequence the secondary vent pipe is not required as the pressure difference stays well within the limit of 3 mbar.

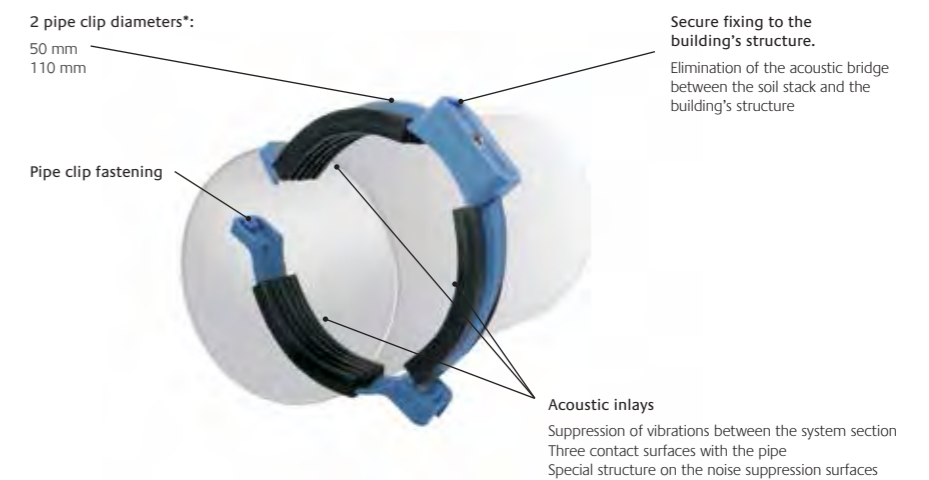
The unique shape of the fitting increases the capacity of the stack. The soil and waste flow from the higher floors smoothly converges with the flow of the lower floor.

## Marley dBlue acoustic system

The Marley dBlue acoustic system is a triple-layer drainage system designed for use where improved levels of soundproofing are required. Suitable for use in domestic applications as well as hospitals and hotels, where reduced noise levels are required. Used in conjunction with the acoustic pipe clips, the dBlue system is designed to reduce noise and acoustic vibrations to a level of 19dB at 4 l/s discharge rate. It is also lightweight, resistant to temperature change and is jointed using the push-fit ring seal method.

The dBlue system is available in 40mm, 50mm, 110mm and 160mm diameters. It is also compatible with the Marley PVCu soil and waste system for branch connections.

\*40 mm and 160 mm pipe clips also available.



## Solvent soil

The Marley PVCu soil range has been extended with the addition of nine new 110mm solvent fittings, offering further options for the installer. The range includes the new 8-way soil manifold which offers

the flexibility of 4 top and 4 side entries, allowing for multiple inlet connections. At just 70mm above the floor slab, the manifold sits neatly at finished floor level in most typical applications.

Now available from  Multikwik					
Solvent waste		Push-fit waste	Overflow	Compression waste	Traps
PVCu	ABS	Polypropylene	PVCu	Polypropylene	Polypropylene
Suitable for internal and external applications.	Lightweight and cost effective for internal installation. Easy to cut joint and install.	For internal use, ideally suited to fast installation. Cost effective solution where systems are being installed or modified.	A complete range of pipework and fittings for overflow and boiler condensate applications.	Multi-fit compression socket, for internal use. Easy installation to similar sized new or existing plastic and copper pipework.	A range of traps, which enable quick & easy installation to any new or existing plastic or copper pipework.
Available in 32, 40 and 50 mm	Available in 32, 40 and 50 mm	Available in 32, 40 mm	Available in 21.5 mm	Available in 32, 40 mm	Available in 32, 40 and 50 mm
White & Black	White, Black & Grey	White, Black & Grey	White	White & Chrome	White & Chrome

ABS and polypropylene waste pipes and fittings are designed for internal use and should not be fitted externally as they will be subject to ultraviolet light degradation. If fitted externally it is recommended that they are protected by the application of a suitable paint or are boxed in.

# Solvent waste PVCu

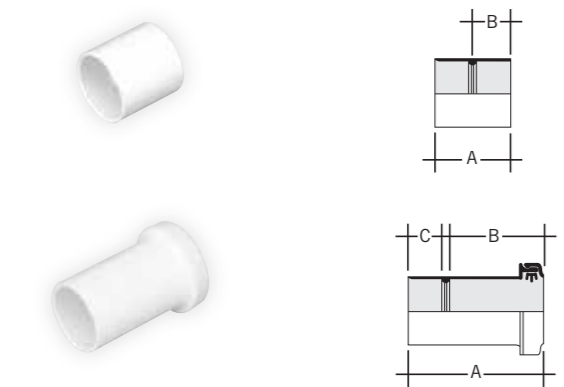
## PIPE



Size mm	Code	Length	Colour	Qty
32	<b>KP104</b>	4m	W B	10
40	<b>KP204</b>	4m	W B	10
50	<b>KP304</b>	4m	W B	5

Double spigot

## STRAIGHT COUPLINGS

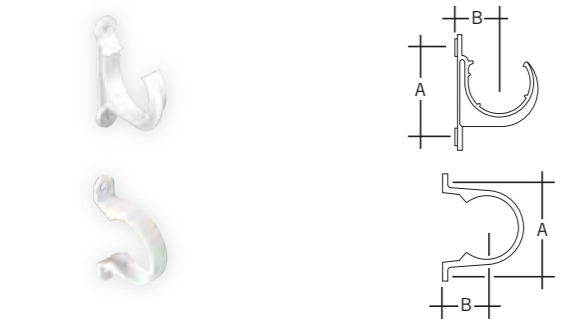


Size mm	Code	A	B	Colour	Qty
32	<b>KSC1</b>	46	20	W B	60
40	<b>KSC2</b>	53	24	W B	30
50	<b>KSC3</b>	66	28	W B	30

Size mm	Code	A	B	C	Colour	Qty
32	<b>KEC1</b>	86	61	20	W	10
40	<b>KEC2</b>	90	64	23	W	10
50	<b>KEC3</b>	82	50	30	W	10

Expansion/adaptor

## PIPE CLIPS



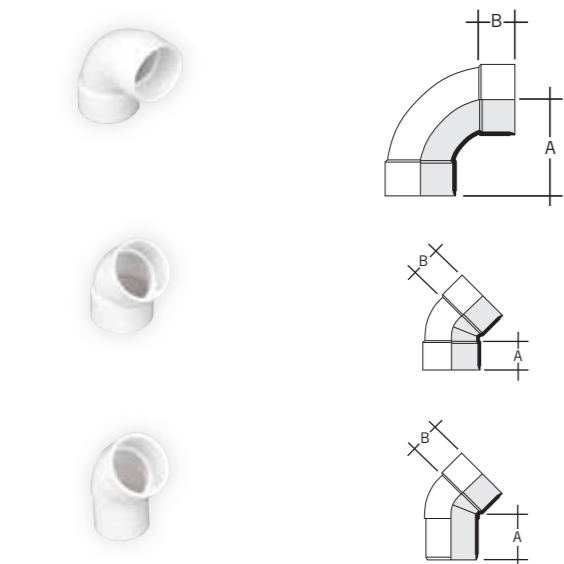
Size mm	Code	A	B	Colour	Qty
32	<b>KF1</b>	57	30	W B G	100
40	<b>KF2</b>	62	30	W B G	100
50	<b>KF3</b>	77	41	W B G	80

Open PCVU

Size mm	Code	A	B	Colour	Qty
32	<b>WC3</b>	76	30	W B	100
40	<b>WC4</b>	82	30	W B	100
50	<b>WC5</b>	100	38	W	80

Saddle

## BENDS



Size mm	Code	Angle	A	B	Colour	Qty
32	<b>KB1</b>	88½°	57	18	W B	50
40	<b>KB2</b>	88½°	62	21	W B	30
50	<b>KB3</b>	88½°	78	28	W B	10

Solvent sockets

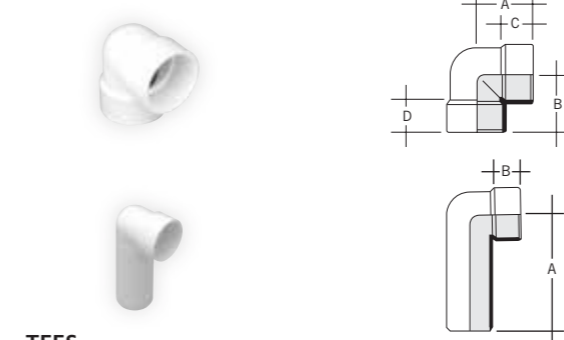
Size mm	Code	Angle	A	B	Colour	Qty
32	<b>KB12</b>	45°	29	18	W B	10
40	<b>KB22</b>	45°	33	21	W B	20
50	<b>KB32</b>	45°	42	28	W B	20

Solvent sockets

Size mm	Code	Angle	A	B	Colour	Qty
32	<b>KBA12</b>	45°	24	23	W	40
40	<b>KBA22</b>	45°	35	26	W	20

Solvent socket/spigot

## BENDS



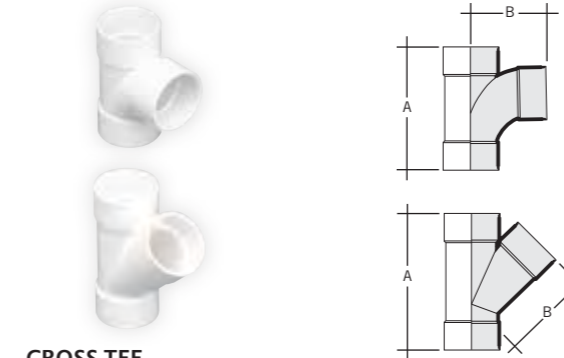
Size mm	Code	Angle	A	B	C	D	Colour	Qty
40	<b>KBK25</b>	90°	48	48	23	23	W B	20
50	<b>KBK35</b>	90°	59	50	20	28	W	10

Knuckle bend/boss adaptor KBK35 is a Radius Bend which can solvent weld over a boss upstand

Size mm	Code	Angle	A	B	Colour	Qty
32	<b>KBS1</b>	87½°	92	18	W	20
40	<b>KBS2</b>	87½°	92	23	W	20

Solvent socket/spigot

## TEES



Size mm	Code	Angle	A	B	Colour	Qty
32	<b>KT1</b>	88½°	92	57	W B	30
40	<b>KT2</b>	88½°	106	62	W B	20
50	<b>KT3</b>	88½°	135	78	W B	10

Solvent sockets

Size mm	Code	Angle	A	B	Colour	Qty
40	<b>KT21</b>	45°	117	78	W	20
50	<b>KT31</b>	45°	149	100	W	10

Solvent sockets

## CROSS TEE



Size mm	Code	Angle	A	B	Colour	Qty
40	<b>KXT21</b>	88½°	106	62	W	10
50	<b>KXT31</b>	88½°	140	87	W	10

Solvent sockets

## ACCESS PLUG



Size mm	Code	A	B	C	Colour	Qty
32	<b>KAP1</b>	22	53	8	W B	10
40	<b>KAP2</b>	25	57	8	W B	10
50	<b>KAP3</b>	33	71	8	W B	10

## SOCKET REDUCER



Size mm	Code	A	B	Colour	Qty
32-21.5	<b>KR175</b>	22	20	W	100
40-32	<b>KR210</b>	28	22	W B	80
50-32	<b>KR310</b>	32	28	W	40
50-40	<b>KR320</b>	32	28	W B	40

Solvent spigot/socket

## IRON ADAPTORS



### Female

Size mm	Code	A	B	C	Colour	Qty
32	<b>KFA1</b>	50	25	20	W	10
40	<b>KFA2</b>	53	25	24	W	10
50	<b>KFA3</b>	60	25	28	W	10

Solvent socket/BSP thread

### Male

Size mm	Code	A	B	C	Colour	Qty
32	<b>KMA1</b>	44	20	20	W	50
40	<b>KMA2</b>	47	20	24	W	40
50	<b>KMA3</b>	53	20	28	W	40

Solvent socket/BSP thread

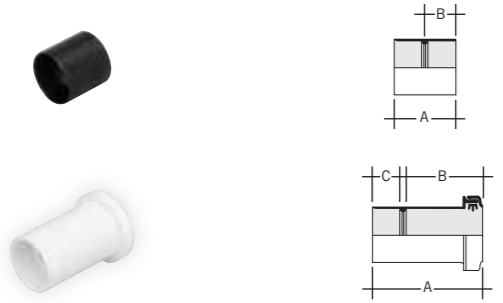
# Solvent waste ABS

## PIPE



Size mm	Code	Length	Colour	Qty
32	<b>WAP33</b>	3m	W B G	♥ 10
40	<b>WAP43</b>	3m	W B G	♥ 10
50	<b>WAP53</b>	3m	W B G	♥ 5

## STRAIGHT COUPLINGS

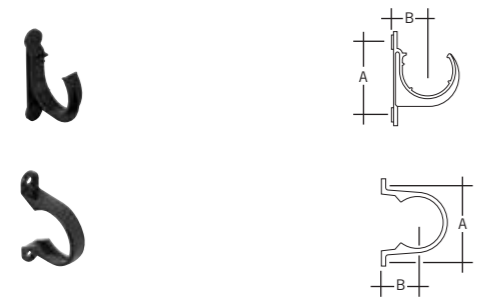


Size mm	Code	A	B	Colour	Qty
32	<b>WAC3</b>	40	20	W B G	♥ 40
40	<b>WAC4</b>	46	23	W B G	♥ 30
50	<b>WAC5</b>	63	30	W B G	♥ 30

Size mm	Code	A	B	C	Colour	Qty
32	<b>WAC31</b>	86	61	20	W	♥ 10
40	<b>WAC41</b>	90	64	23	W	♥ 10
50	<b>KEC3*</b>	82	50	30	W	♥ 10

Expansion/copper adaptor

## PIPE CLIPS



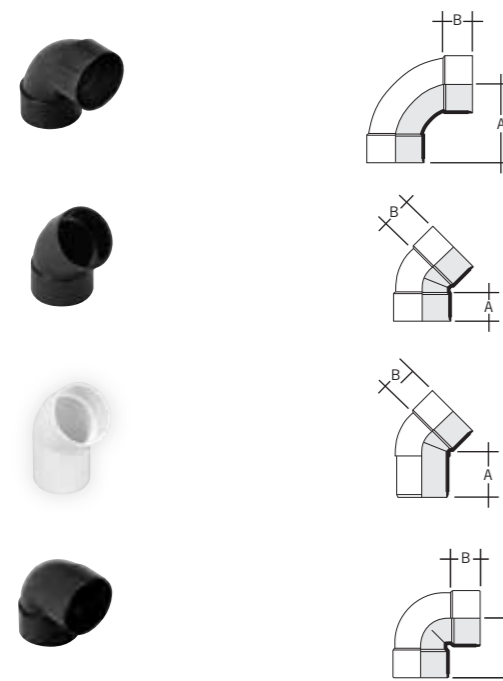
Size mm	Code	A	B	Colour	Qty
32	<b>KF1</b>	57	30	W B G	♥ 100
40	<b>KF2</b>	62	30	W B G	♥ 100
50	<b>KF3</b>	77	41	W B G	♥ 80

Open PCVU

Size mm	Code	A	B	Colour	Qty
32	<b>WC3</b>	76	30	W B G	♥ 100
40	<b>WC4</b>	82	30	W B G	♥ 100
50	<b>WC5</b>	100	38	W	♥ 80

Saddle

## BENDS



Size mm	Code	Angle	A	B	Colour	Qty
32	<b>WAB3</b>	88½°	55	20	W B G	♥ 50
40	<b>WAB4</b>	88½°	64	23	W B G	♥ 30
50	<b>WAB5</b>	88½°	86	30	W B G	♥ 20

Size mm	Code	Angle	A	B	Colour	Qty
32	<b>WAB31</b>	45°	32	20	W B G	40
40	<b>WAB41</b>	45°	36	23	W B G	♥ 20
50	<b>WAB51</b>	45°	47	30	W B G	♥ 20

Size mm	Code	Angle	A	B	Colour	Qty
32	<b>WAB32</b>	45°	45	20	W	30
40	<b>WAB42</b>	45°	48	23	W	♥ 20

Spigot

Size mm	Code	Angle	A	B	Colour	Qty
32	<b>WAB33</b>	90°	44	20	W B G	♥ 30
40	<b>WAB43</b>	90°	53	23	W B G	♥ 20

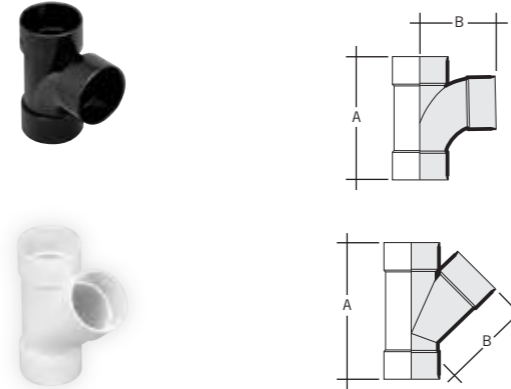
Knuckle bend

## ACCESS PLUG



Size mm	Code	A	B	C	Colour	Qty
32	<b>WAA3</b>	22	53	8	W B G	♥ 10
40	<b>WAA4</b>	25	57	8	W B G	♥ 10
50	<b>WAA5</b>	33	71	8	W B G	♥ 10

## TEES



Size mm	Code	Angle	A	B	Colour	Qty
32	<b>WAT3</b>	88½°	90	55	W B G	♥ 30
40	<b>WAT4</b>	88½°	107	64	W B G	♥ 20
50	<b>WAT5</b>	88½°	140	86	W B G	♥ 10

Size mm	Code	Angle	A	B	Colour	Qty
32	<b>WAT31</b>	45°	102	65	W	♥ 20
40	<b>WAT41</b>	45°	117	79	W	♥ 20
50	<b>WAT51</b>	45°	150	100	W	♥ 10

## CROSS TEE



Size mm	Code	Angle	A	B	Colour	Qty
40	<b>WAT42</b>	88½°	106	65	W	♥ 10
50	<b>WAT52</b>	88½°	140	88	W	♥ 10

## SOCKET REDUCER



Size mm	Code	A	B	Colour	Qty
40-32	<b>WAR43</b>	26	20	W B G	♥ 80
50-32	<b>WAR53</b>	31	20	W B G	♥ 40
50-40	<b>WAR54</b>	31	23	W B G	♥ 40

## IRON ADAPTORS



### Female

Size mm	Code	A	B	C	Colour	Qty
32	<b>WAF3</b>	50	25	25	W	♥ 10
40	<b>WAF4</b>	53	25	24	W	♥ 10
50	<b>WAF5</b>	60	25	28	W	♥ 10

### Male

Size mm	Code	A	B	C	Colour	Qty
32	<b>WAM3</b>	44	20	20	W	♥ 50
40	<b>WAM4</b>	47	20	24	W	♥ 40
50	<b>WAM5</b>	53	20	28	W	♥ 40

## CAP AND LINING



Size mm	Code	A	Colour	Qty
32	<b>WAM31</b>	58	W	♥ 10

# Push-fit waste polypropylene

## PIPE



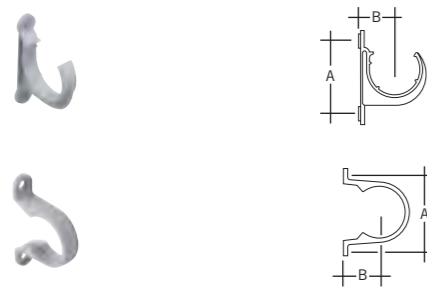
Size mm	Code	Length	Colour	Qty
32	<b>WPP33</b>	3m	W B G	10
40	<b>WPP43</b>	3m	W B G	10

## STRAIGHT COUPLING



Size mm	Code	A	B	Colour	Qty
32	<b>WPC3</b>	66	38	W B G	10
40	<b>WPC4</b>	69	38	W B G	20

## PIPE CLIPS



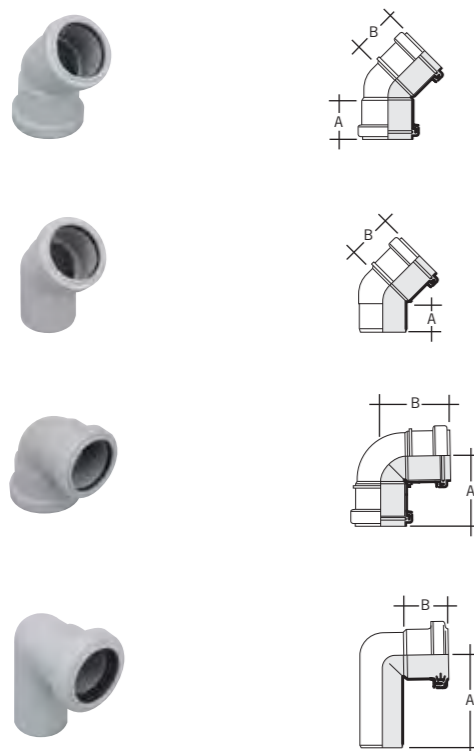
Size mm	Code	A	B	Colour	Qty
32	<b>KF1</b>	57	30	W B G	100
40	<b>KF2</b>	62	30	W B G	100

Open PCVu

Size mm	Code	A	B	Colour	Qty
32	<b>WC3</b>	76	30	W B G	100
40	<b>WC4</b>	82	30	W B G	100

Saddle

## BENDS



Size mm	Code	Angle	A	B	Colour	Qty
32	<b>WPB31</b>	45°	42	42	W B G	20
40	<b>WPB41</b>	45°	43	43	W B G	20

Push-fit sockets

Size mm	Code	Angle	A	B	Colour	Qty
32	<b>WPB32</b>	45°	36	31	W B G	10
40	<b>WPB42</b>	45°	36	32	W B G	20

Spigot/push-fit sockets

Size mm	Code	Angle	A	B	Colour	Qty
32	<b>WPB33</b>	90°	60	60	W B G	10
40	<b>WPB43</b>	90°	65	65	W B G	20

Knuckle bend

Size mm	Code	Angle	A	B	Colour	Qty
32	<b>WPB34</b>	88½°	75	37	W B G	10
40	<b>WPB44</b>	88½°	75	37	W B G	30

Spigot/socket

## TEE



Size mm	Code	Angle	A	B	Colour	Qty
32	<b>WPT31</b>	88½°	105	63	W B G	10
40	<b>WPT41</b>	88½°	115	68	W B G	30

Ring seal sockets

## ACCESS PLUG



Size mm	Code	A	Colour	Qty
32	<b>WPA31</b>	20	W B G	100
40	<b>WPA41</b>	20	W B G	100

Push-fit spigot

## SOCKET REDUCER



Size mm	Code	A	B	Colour	Qty
40-32	<b>WPR43</b>	45	36	W B G	10

Socket/spigot

## MULTI-FIT COMPONENTS



Size mm	Code	A	B	C	Required hole size	Colour	Qty
32	<b>WUM33</b>	86	56	24	42	G	10
40	<b>WUM43</b>	86	58	24	50	G	20

Fit BS EN 1451, BS EN 1455 or BS EN 1566 pipe. Straight tank connector

## MULTI-FIT WASTE CONNECTOR



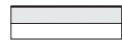
Size mm	Code	A	B	Colour	Qty
32	<b>WCC3</b>	75	25	W	200
40	<b>WCC4</b>	75	25	W	150

Straight coupling



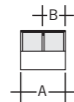
# PVCu condense and overflow system

## PIPE



Size mm	Code	Length	Colour	Qty
21.5	<b>OP21</b>	4m	W	30

## STRAIGHT COUPLING



Size mm	Code	A	B	Colour	Qty
21.5	<b>OSC21</b>	28	13	W	10

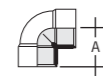
## PIPE CLIP



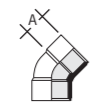
Size mm	Code	A	B	Colour	Qty
21.5	<b>OC21</b>	44	14	W	10

Saddle

## BENDS

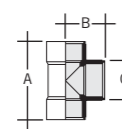


Size mm	Code	Angle	A	Colour	Qty
21.5	<b>OB90</b>	90°	25	W	10



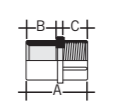
Size mm	Code	Angle	A	Colour	Qty
21.5	<b>OB45</b>	45°	13	W	10

## TEE

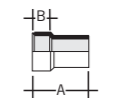


Size mm	Code	Angle	A	B	C	Colour	Qty
21.5	<b>OT90</b>	90°	50	25	21.5	W	10

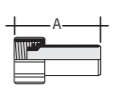
## ADAPTORS



Female iron							
Size mm	Code	A	B	C	Colour	Qty	
21.5	<b>OFA21</b>	47	23	19	W	70	

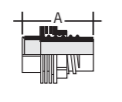


Straight, to 22mm							
Size mm	Code	A	B	Colour	Qty		
21.5	<b>OCA21</b>	39	13	W	150		

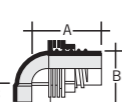


Cap and lining							
Size mm	Code	A	Colour	Qty			
21.5	<b>OCL21</b>	46	W	100			

## TANK CONNECTORS



Straight							
Size mm	Code	A	Colour	Qty			
21.5	<b>OTC21</b>	50	W	10			



Bent							
Size mm	Code	Angle	A	B	C	Colour	Qty
21.5	<b>OBC90</b>	90°	48	25	13	W	10

Including polyethylene washers and quick fix Acme threads

## Marley co-ex soil

### 110mm soil pipe with at least 30% recycled content

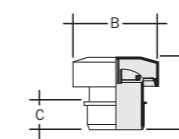
Marley 110mm soil pipe now combines the environmental benefits of using recycled material with the quality and aesthetic advantages of co-extrusion technology.

- BS EN 1329 certified
- Looks better, with higher gloss levels
- Has improved weathering performance
- Available in grey and black colour only
- Same list price as standard white pipe
- Colour matched to all standard 110mm Marley soil fittings



## Accessories

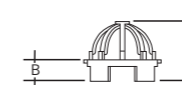
### DURGO AIR ADMITTANCE VALVES



Size mm	Code	A	B	C	Colour	Qty
50	<b>SVD2*</b>	98	82	28	W	32
82	<b>SVD3*</b>	108	118	40	G	18
110	<b>SVD4</b>	124	138	50	G	18

Durgo valve including polystyrene insulating hood. \*Can be fitted below flood level. It is recommended this is fitted in a push-fit socket. BBA certified for use up to 10 storeys.

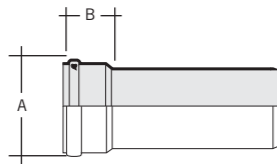
### VENT TERMINAL



Size mm	Code	A	B	Colour	Qty
50	<b>RV225</b>	55	18	W B G	30

# Push-fit soil, PVCu

## PIPE



Size mm	Code	Length	A	B	Colour	Qty
82	<b>SP303</b>	3m	100	76	B G	♥ 156
82	<b>SP304</b>	4m	100	76	G	♥ 156

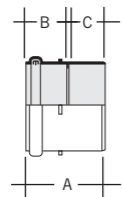
### 110MM CO-EX SOIL

110	<b>SP4025</b>	2.5m	128	70	B G	♥ 100
110	<b>SP403</b>	3m	128	70	W B G	♥ 2
110	<b>SP404</b>	4m	128	70	G	♥ 100

160	<b>SP603</b>	3m	182	107	G	♥ 46
160	<b>SP604</b>	4m	182	107	G	♥ 46

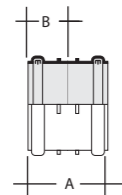
Push-fit socket

## STRAIGHT COUPLINGS



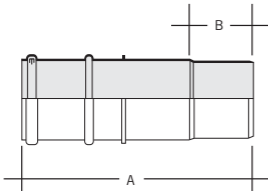
### Loose pipe socket

Size mm	Code	A	B	C	Colour	Qty
82	<b>SE300</b>	103	50	48	B G	♥ 30
110	<b>SE400</b>	109	61	48	W B G	♥ 8
160	<b>SE600</b>	190	107	77	G	♥ 4



### Double ring seal slip coupling

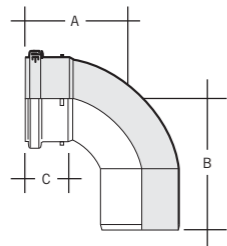
Size mm	Code	A	B	Colour	Qty
82	<b>SE305</b>	104	49	B G	♥ 30
110	<b>SE405</b>	128	64	B G	♥ 8
160	<b>SE605</b>	170	83	G	♥ 4



### Triple socket

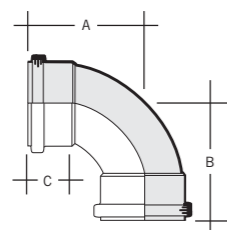
Size mm	Code	A	B	Colour	Qty
110	<b>SE402</b>	311	82	G	♥ 4

## SHORT RADIUS BENDS



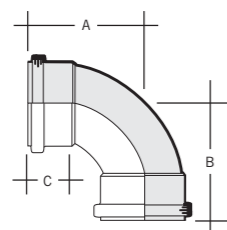
Size mm	Code	Angle	A	B	C	Colour	Qty
82	<b>SB31</b>	87½°	138	115	49	B G	♥ 20
110	<b>SB41</b>	87½°	158	157	70	W B G	♥ 4
160	<b>SFB61</b>	87½°	242	232	88	G	♥ 1

Push-fit socket/spigot



Size mm	Code	Angle	A	B	C	Colour	Qty
82	<b>SB35</b>	45°	76	73	49	B G	♥ 20
110	<b>SB45</b>	45°	84	89	62	W B G	♥ 4
160	<b>SFB65</b>	45°	120	118	85	G	♥ 2

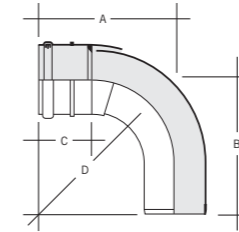
Push-fit socket/spigot



Size mm	Code	Angle	A	B	C	Colour	Qty
110	<b>SB411</b>	88½°	135	145	50	B G	♥ 4

Double push-fit socket

## ADJUSTABLE BENDS



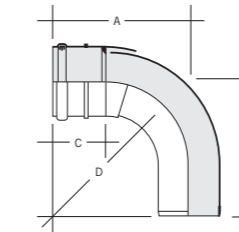
Size mm	Code	Angle	A	B	C	Colour	Qty
82	<b>SB37</b>	11-87½°	195	187	49	B G	10

Push-fit socket/spigot



Size mm	Code	Angle	A	B	C	Colour	Qty
110	<b>SB46</b>	5-14°	125	135	82	G	4

Push-fit socket/spigot



Size mm	Code	Angle	A	B	C	D	Colour	Qty
110	<b>SB47</b>	21-90°	189	187	90	127	B G	4

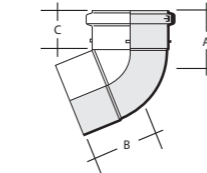
Push-fit socket/spigot



Size mm	Code	Angle	A	B	C	D	Colour	Qty
160	<b>SB67</b>	31-90°	285	275	96	184	G	2

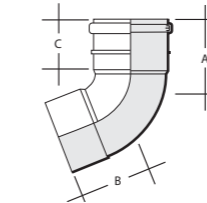
Push-fit socket/spigot

## OFFSET BENDS



Size mm	Code	Angle	A	B	C	Colour	Qty
110	<b>SNE405</b>	67½°	94	91	60	W B G	4

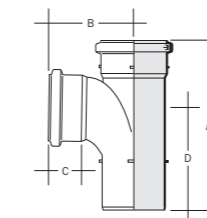
Push-fit solvent socket



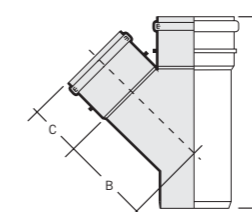
Size mm	Code	Angle	A	B	C	Colour	Qty
82	<b>SNE300*</b>	67½°	98	86	57	B G	30
160	<b>SNE600</b>	67½°	178	182	88	G	140

Push-fit solvent socket. \*Shown

## EQUAL BRANCHES



Size mm	Code	Angle	A	B	C	D	Colour	Qty
110	<b>SY401</b>	87½°	299	150	60	175	W B G	4
160	<b>SY601</b>	87½°	438	245	96	260	G	2



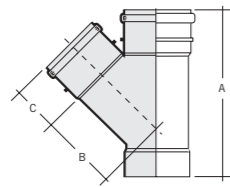
Size mm	Code	Angle	A	B	C	Colour	Qty
82	<b>SY36</b>	45°	229	130	55	G	10
110	<b>SY460</b>	45°	285	198	62	B G	4
160	<b>SY63</b>	45°	400	200	90	G	2

Push-fit sockets/spigot



# Push-fit soil, PVCu

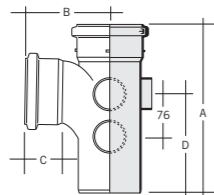
## EQUAL BRANCHES



Size mm	Code	Angle	A	B	C	Colour	Qty
110	<b>SY466</b>	45°	282	198	62	B G	4

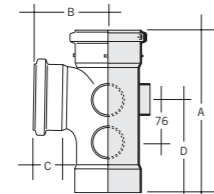
Push-fit sockets/solvent socket

## FIVE BOSS BRANCHES



Size mm	Code	Angle	A	B	C	D	Colour	Qty
110	<b>SY405</b>	87½°	287	143	60	175	W B G	4

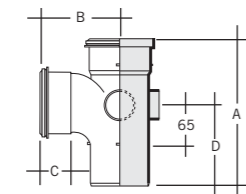
Push-fit sockets/spigot



Size mm	Code	Angle	A	B	C	D	Colour	Qty
110	<b>SYS415</b>	87½°	280	143	60	168	B G	4

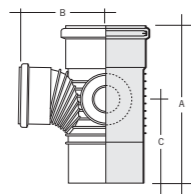
Push-fit sockets/solvent socket

## THREE BOSS BRANCH



Size mm	Code	Angle	A	B	C	D	Colour	Qty
82	<b>SY33F</b>	87½°	212	122	52	121	B G	10

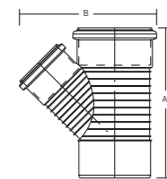
## UNEQUAL BRANCHES



Size mm	Code	Angle	A	B	C	Colour	Qty
160x110	<b>SY64</b>	87½°	337	175	175	G	2

Push-fit sockets/spigot. 2 boss/access upstands

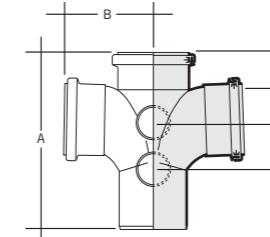
## UNEQUAL BRANCHES



Size mm	Code	Angle	A	B	Colour	Qty
160x110	<b>SY66</b>	45°	335	306	G	2

Push-fit sockets/spigot

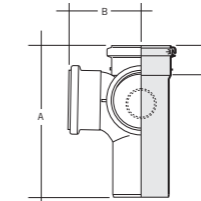
## DOUBLE BRANCH



Size mm	Code	Angle	A	B	C	D	Colour	Qty
110	<b>SY404</b>	87½°	288	141	54	76	G	4

Push-fit sockets/spigot. 2 boss/access upstands

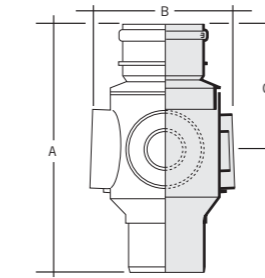
## CORNER BRANCH



Size mm	Code	Angle	A	B	C	D	Colour	Qty
110	<b>SY411°</b>	87½°	287	143	60	175	G	4

Push-fit sockets/spigot. 1 boss upstand

## MULTI BRANCH



Size mm	Code	Angle	A	B	C	Colour	Qty
110	<b>SW64</b>	87½°	384	160	192	G	130

Push-fit socket/spigot. 4 boss upstands

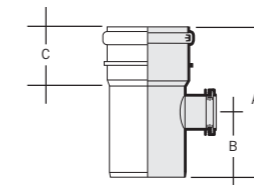
### Multi branch socket

Size mm	Code	A	B	C	Colour	Qty
110	<b>SE404</b>	127	126	82	G	4

### Multi branch access cap

Size mm	Code	A	B	C	Colour	Qty
110	<b>SE45</b>	150	37	64	G	10

## BOSS PIPES



Size mm	Code	Angle	A	B	C	Colour	Qty
110	<b>SW41</b>	87½°	204	86	82	W B G	4

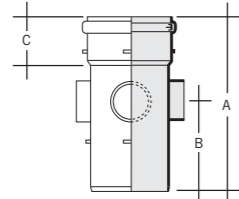
Push-fit socket/spigot. 1 40mm boss connection

Size mm	Code	Angle	A	B	C	Colour	Qty
110	<b>SW415</b>	87½°	204	86	82	B G	4

Push-fit socket/spigot. 1 32mm boss connection

# Push-fit soil, PVCu

## BOSS PIPES



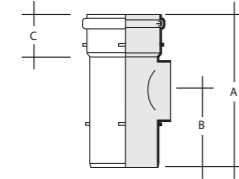
Size mm	Code	Angle	A	B	C	Colour	Qty
82	<b>SW30</b>	90°	202	101	49	B G	15

Push-fit socket/spigot. 3 boss upstands, 1 drilled

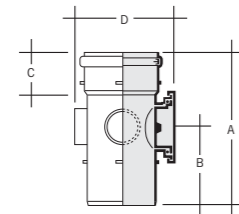
Size mm	Code	Angle	A	B	C	Colour	Qty
110	<b>SW40</b>	90°	244	123	70	W B G	4

Push-fit socket/spigot. 4 boss upstands

## ACCESS PIPES



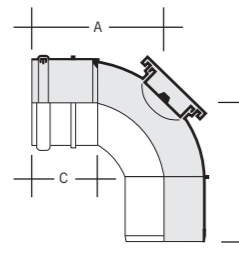
Size mm	Code	A	B	C	Colour	Qty
82	<b>SF31</b>	205	101	52	B G	15



Size mm	Code	A	B	C	D	Colour	Qty
110	<b>SF41</b>	244	123	70	152	B G	4

Socket/spigot

## REAR ACCESS BENDS



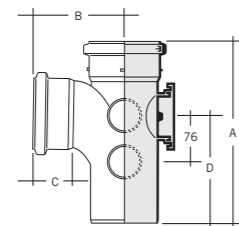
Size mm	Code	Angle	A	B	C	Colour	Qty
110	<b>SB42</b>	87½°	138	146	55	B G	4

Push-fit socket/spigot

Adjustable 64° – 87½°

Size mm	Code	A	B	C	Colour	Qty
82	<b>SB38</b>	124	127	57	B G	1

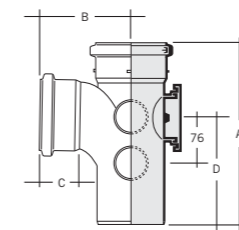
## REAR ACCESS BRANCHES



Size mm	Code	Angle	A	B	C	D	Colour	Qty
110	<b>SY402</b>	87½°	287	143	60	175	B G	4

2 boss upstands

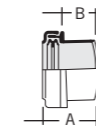
## REAR ACCESS BRANCHES



Size mm	Code	Angle	A	B	C	D	Colour	Qty
82	<b>SY34F</b>	87½°	212	121	52	101	B G	6

Fixed

## BOSS CONNECTOR



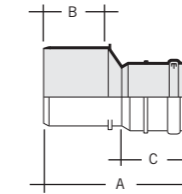
Size mm	Code	Angle	A	B	Colour	Qty
32	<b>SA411</b>	87½°	43	21	W B G	50

40	<b>SA421</b>	87½°	43	21	W B G	40
----	--------------	------	----	----	-------	----

50	<b>SA420</b>	87½°	66	45	B G	40
----	--------------	------	----	----	-----	----

Solvent weld with push-fit seal

## LEVEL INVERT REDUCERS



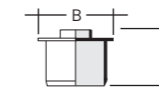
Size mm	Code	A	B	C	Colour	Qty
110x82	<b>SRM304</b>	192	78	82	B G	20

Spigot/socket

Size mm	Code	A	B	C	Colour	Qty
160x110	<b>SRM604</b>	219	90	82	G	4

Spigot/socket

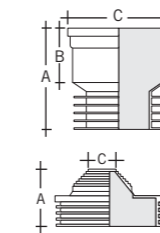
## CONCENTRIC REDUCER



Size mm	Code	A	B	Colour	Qty
110-50	<b>SE41</b>	105	135	B G	18

Spigot to boss upstand

## ADAPTOR



Size mm	Code	A	B	C	Colour	Qty
110	<b>SA42</b>	130	65	130	B	40

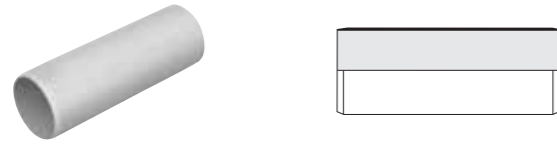
Soil to drain adaptor

Size mm	Code	A	B	C	Colour	Qty
110	<b>SA110</b>	58	25	34	B	10

Waste to drain adaptor

# Solvent soil, PVCu

## PIPE



### 110MM CO-EX SOIL

Size mm	Code	Length	Colour	Qty
110	<b>SL403</b>	3m	W B G	♥ 100
110	<b>SL404</b>	4m	G	♥ 100

Double spigot

## STRAIGHT COUPLINGS



### Loose pipe socket

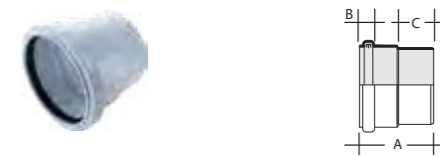
Size mm	Code	A	B	C	Colour	Qty
82	<b>SE300</b>	103	50	48	B G	♥ 30
110	<b>SE400</b>	109	61	48	W B G	♥ 8
160	<b>SE600</b>	190	107	77	G	♥ 4



### Double solvent socket

Size mm	Code	A	B	C	Colour	Qty
82	<b>SES301</b>	93	44	82	G	♥ 50
110	<b>SES401</b>	102	50	124	B G	♥ 8

## EXPANSION COUPLING

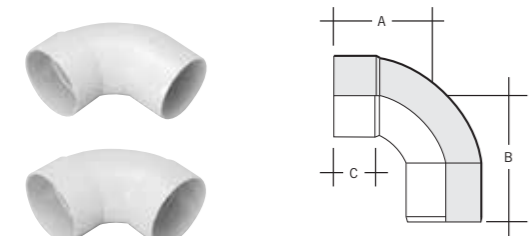


### Solvent socket ring seal adaptor

Size mm	Code	A	B	C	Colour	Qty
110	<b>SE409</b>	105	20	52	B G	♥ 8

To accommodate thermal movement in both vertical and horizontal solvent pipework

## SHORT RADIUS BENDS



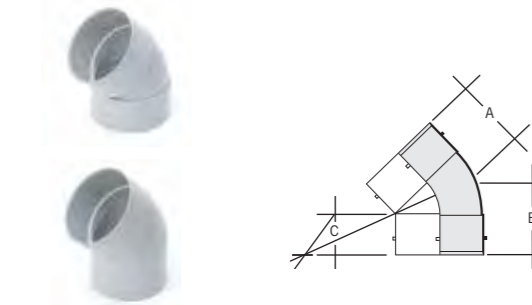
Size mm	Code	Angle	A	B	C	Colour	Qty
110	<b>SBS41</b>	87½°	162	168	50	G	♥ 4

Solvent socket/spigot



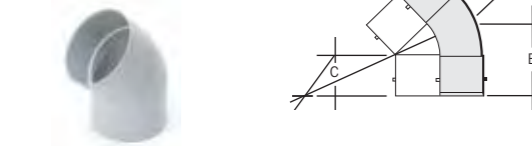
Size mm	Code	Angle	A	B	C	D	Colour	Qty
110	<b>SBS42</b>	87½°	149	149	47	119	B G	♥ 4

Double solvent socket



Size mm	Code	Angle	A	B	C	Colour	Qty
110	<b>SBS45</b>	45°	76	76	52	B G	♥ 4

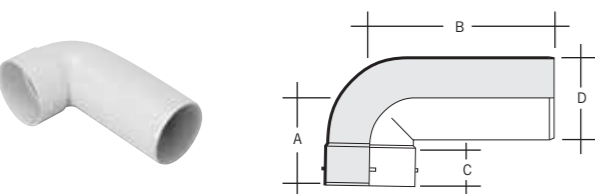
Double solvent socket



Size mm	Code	Angle	A	B	C	Colour	Qty
110	<b>SBS415</b>	45°	76	89	52	B G	♥ 4

Solvent socket/spigot

## LONG RADIUS BEND



Size mm	Code	Angle	A	B	C	D	Colour	Qty
110	<b>SBS40</b>	87½°	114	240	48	110	W B G	♥ 4

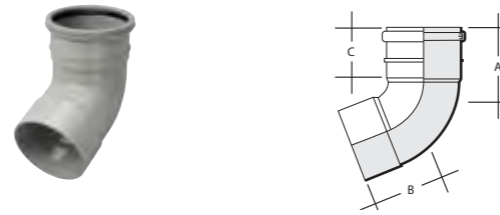
Solvent socket/spigot

## OFFSET BENDS



Size mm	Code	Angle	A	B	C	Colour	Qty
110	<b>SNE405</b>	67½°	76	61	60	W B G	♥ 4

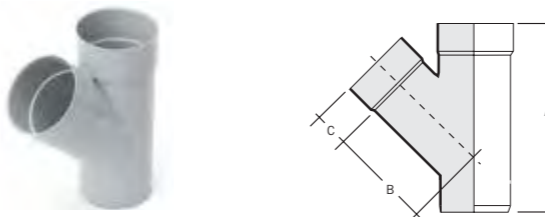
Push-fit solvent socket



Size mm	Code	Angle	A	B	C	Colour	Qty
82	<b>SNE300*</b>	67½°	88	48	49	B G	♥ 30
160	<b>SNE600</b>	67½°	178	182	96	G	♥ 140

Push-fit solvent socket. \*Shown

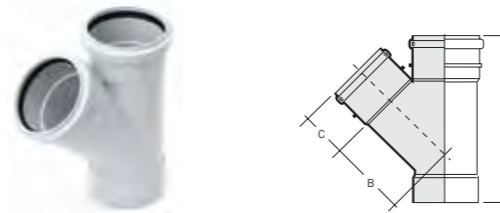
## EQUAL BRANCH



Size mm	Code	Angle	A	B	C	Colour	Qty
110	<b>SYS460</b>	45°	277	135	55	B G	♥ 4

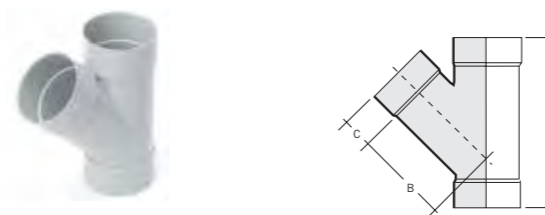
Solvent sockets/spigot

## EQUAL BRANCHES



Size mm	Code	Angle	A	B	C	Colour	Qty
110	<b>SY466</b>	45°	282	138	60	B G	♥ 4

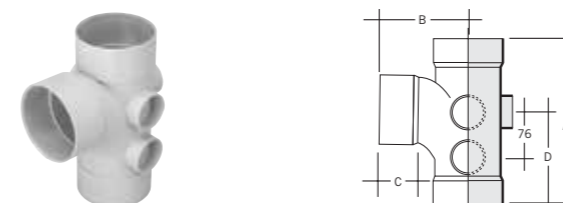
Push-fit sockets/solvent socket



Size mm	Code	Angle	A	B	C	Colour	Qty
110	<b>SYS466</b>	45°	274	135	55	B G	♥ 4

Triple solvent sockets

## FIVE BOSS BRANCH



Size mm	Code	Angle	A	B	C	D	Colour	Qty
110	<b>SYS405</b>	87½°	272	135	55	168	B G	♥ 4

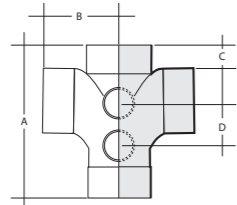
Triple solvent socket

Size mm	Code	Angle	A	B	C	D	Colour	Qty
110	<b>SY415</b>	87½°	279	135	55	175	B G	♥ 4

Solvent socket/spigot

# Solvent soil, PVCu

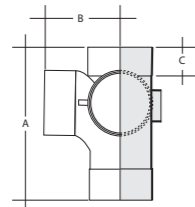
## DOUBLE BRANCH



Size mm	Code	Angle	A	B	C	D	Colour	Qty
110	<b>SYS404</b>	87½°	274	133	45	76	G	4

All solvent sockets, 4 boss upstands

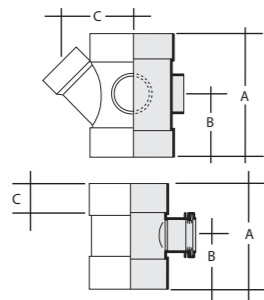
## CORNER BRANCH



Size mm	Code	Angle	A	B	C	Colour	Qty
110	<b>SYS411°</b>	87½°	272	135	55	G	1

All solvent sockets. 1 boss upstand

## BOSS PIPES



Size mm	Code	Angle	A	B	C	Colour	Qty
110	<b>SWS4135</b>	45°	186	93	145	G	4

Push-fit socket/spigot. 1 40mm boss connection

Size mm	Code	Angle	A	B	C	Colour	Qty
110x32	<b>SWS415</b>	87½°	170	85	52	W B G	4

Push-fit socket/spigot. 1 32mm boss connection

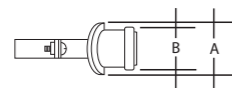
Size mm	Code	Angle	A	B	C	Colour	Qty
110x40	<b>SWS41</b>	87½°	170	85	52	W B G	4

Push-fit socket/spigot. 3 boss upstands, 1 drilled

Size mm	Code	Angle	A	B	C	Colour	Qty
110x50	<b>SWS42</b>	87½°	170	85	52	B G	4

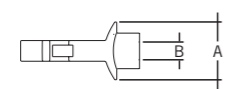
Push-fit socket/spigot. 4 boss upstands

## STRAP-ON-BOSS



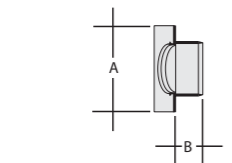
Size mm	Code	Angle	A	B	Required hole size	Colour	Qty
32x110	<b>SWS4150</b>	90°	70	55	50	B G	40
40x110	<b>SWS410</b>	90°	70	62	50	B G	40
50x110	<b>SWS420</b>	90°	86	75	63	B G	30

## CONDENSATE STRAP-ON-BOSS



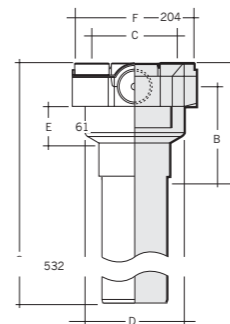
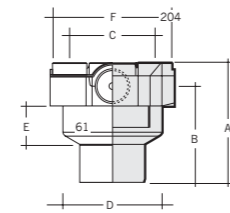
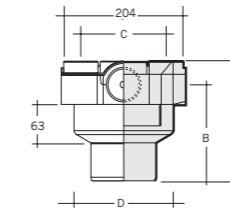
Size mm	Code	Angle	A	B	Colour	Qty
21.5x110	<b>SWS4C</b>	90°	70	21.5	G	50

## PATCH BOSS



Size mm	Code	A	B	Colour	Qty
32x82	<b>SWS332</b>	95	18	G	20
40x82	<b>SWS340</b>	95	23	G	20
50x82	<b>SWS350</b>	95	27	G	20

## 8-WAY COLLAR BOSS



Size mm	Code	A	B	C	D	Colour	Qty
110	<b>SCB41</b>	195	157	140	164	G	1

Solvent socket/spigot

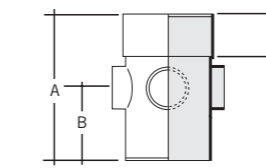
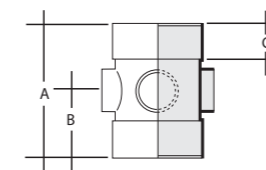
Size mm	Code	A	B	C	D	Colour	Qty
110	<b>SCB541</b>	184	146	140	164	G	1

Double solvent socket tail

Size mm	Code	A	B	C	D	Colour	Qty
110	<b>SCBL41</b>	532	146	140	164	G	1

Solvent socket/spigot with 350mm spigot tail

## BOSS PIPES



Size mm	Code	Angle	A	B	C	Colour	Qty
110	<b>SWS40</b>	90°	179	92	55	B G	4

Double solvent socket. 4 boss upstands, 1 drilled

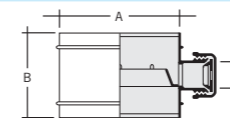
Size mm	Code	Angle	A	B	C	Colour	Qty
110	<b>SWS405</b>		179	92	54	B G	4

Solvent socket/spigot. 4 boss upstands, 1 drilled

Size mm	Code	Angle	A	B	C	Colour	Qty
160	<b>SW60</b>	90°	335	110	96	G	4

Solvent socket/spigot.

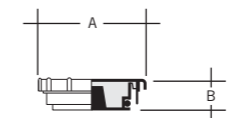
## CONDENSATION TRAP



Size mm	Code	A	B	C	Colour	Qty
110	<b>SCT4°</b>	115	82	22	G	6

With 21.5/22mm overflow connection

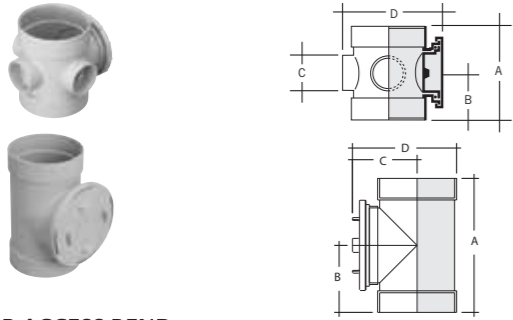
## ACCESS CAPS



Size mm	Code	A	B	Colour	Qty
82	<b>SE30</b>	114	35	B G	30
110	<b>SE40</b>	150	37	B G	30
160	<b>SE62</b>	195	40	G	15

With pressure plug

## ACCESS PIPES



Size mm	Code	A	B	C	D	Colour	Qty
110	<b>SFS41</b>	150	75	56	154	W B G	4

Double solvent sockets. 3 boss upstands

Size mm	Code	A	B	C	D	Colour	Qty
160	<b>SF611</b>	287	144	138	223	G	2

Double solvent sockets

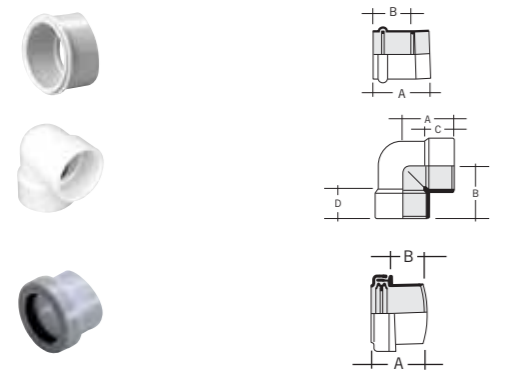
## REAR ACCESS BEND



Size mm	Code	Angle	A	B	C	Colour	Qty
110	<b>SBS420</b>	87½°	131	128	54	B G	4

Double solvent socket

## BOSS CONNECTORS



Size mm	Code	Angle	A	B	Colour	Qty
40	<b>SA425</b>	87½°	30	25	B G	50

Solvent weld with solvent weld joint

Size mm	Code	Angle	A	B	C	D	Colour	Qty
40	<b>KBK25</b>	87½°	48	48	23	23	W B	20
50	<b>KBK35</b>	87½°	59	50	20	28	W	10

Solvent weld

Size mm	Code	Angle	A	B	Colour	Qty
32	<b>SA411</b>	87½°	43	21	W B G	50
40	<b>SA421</b>	87½°	43	21	W B G	40
50	<b>SA420</b>	87½°	66	45	B G	40

## CONCENTRIC REDUCERS



Size mm	Code	A	B	Colour	Qty
110-50	<b>SE41</b>	105	135	B G	18

Spigot to boss upstand

## ECCENTRIC REDUCERS



Size mm	Code	A	B	Colour	Qty
82-50	<b>SRM30</b>	66	35	B G	90

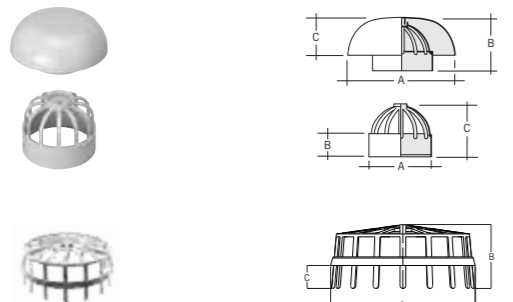
Spigot tail



Size mm	Code	A	B	C	Colour	Qty
110-50	<b>SRM402</b>	48	25	19	B G	10

Solvent socket to boss upstand

## VENT TERMINALS

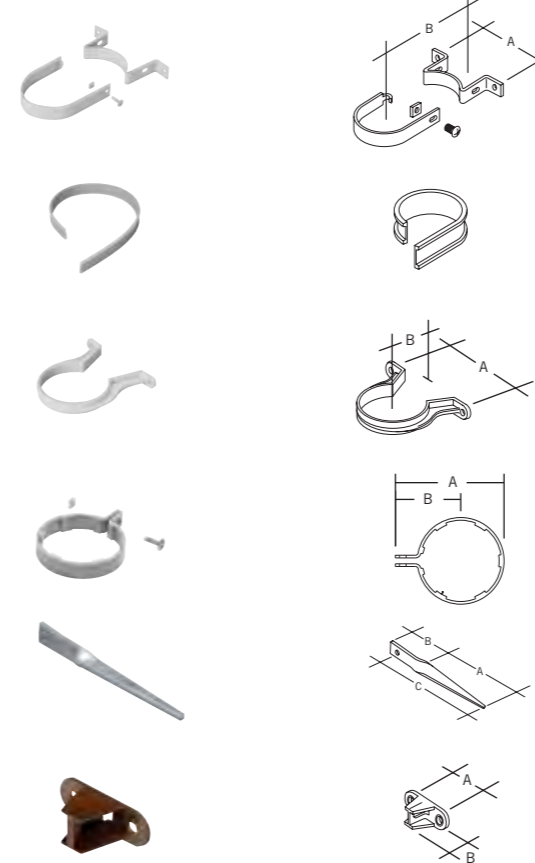


Roof cowl/vent terminal							
Size mm	Code	A	B	C	Colour	Qty	
110	<b>SVC1</b>	200	98	70	W B G	10	

Vent terminal							
Size mm	Code	A	B	C	Colour	Qty	
82	<b>SV321</b>	90	30	75	B G	30	
110	<b>SV42</b>	117	34	95	W B G	60	

Vent terminal							
Size mm	Code	A	B	C	Colour	Qty	
160	<b>SV62°</b>	160	71	25	G	20	

## CLIPS



Socket clip					
Size mm	Code	A	B	Colour	Qty
110	<b>SC41</b>	152	101	B G	50
160	<b>SC61</b>	240	121	G	50

PVC coated mild steel, includes 6x20mm nut and bolt

Barrel clip collar				
Size mm	Code	Colour	Qty	
1000	<b>SC621</b>	G	25	

Converts socket clip to pipe clip (3x110mm or 2x160mm)

Pipe clip					
Size mm	Code	A	B	Colour	Qty
82	<b>SC35</b>	125	93	B G	20
110	<b>SC45</b>	150	101	W B G	50

PVCu

Pipe clip					
Size mm	Code	A	B	Colour	Qty
82	<b>SC355</b>	117	70	B G	20

For use with drive-in spike or backplate.

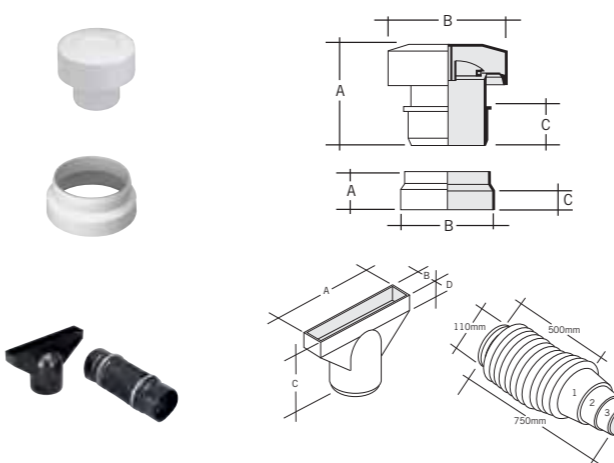
Drive-in spike					
Code	A	B	C	Colour	Qty
<b>RS51°</b>	115	58	19	G	50

Galvanised mild steel

Backplate				
Code	A	B	Colour	Qty
<b>RCB300</b>	48	31	W B G BR	100

For use with SC355

## DURGO AIR ADMITTANCE VALVES



Size mm	Code	A	B	C	Colour	Qty
50	<b>SVD2*</b>	98	82	28	W	32
82	<b>SVD3*</b>	108	118	40	G	18
110	<b>SVD4</b>	124	138	50	G	18

Durgo valve including polystyrene insulating hood. \*Can be fitted below flood level. It is recommended this is fitted in a push-fit socket

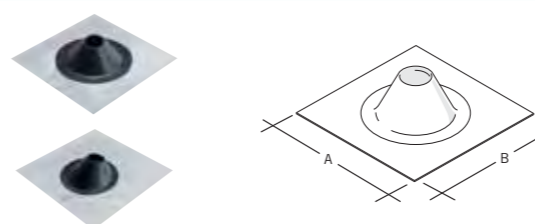
Weathering collar						
Size mm	Code	A	B	C	Colour	Qty
82	<b>SV31*</b>	51	94	25	B	100
110	<b>SV43</b>	57	130	25	W B G	35

PVCu for solvent joint to pipe \*Available in black rubber only.

Ridge vent connector							
Size mm	Code	A	B	C	D	Colour	Qty
110	<b>SV44</b>	276	39	175	32	B	20

Fits Marley Roof Tiles' Ventilated and Soil Vent Pipe Terminals. Comprises of an adaptor and flexible piping

## WEATHERING SLATES



Size mm	Code	A	B	Colour	Qty
400	<b>SAS40</b>	400	400	G	5

Flat

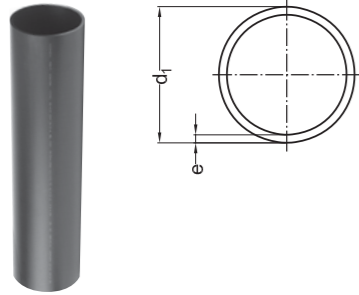
Size mm	Code	A	B	Colour	Qty
450	<b>SAS45</b>	450	450	G	5
610	<b>SAS61</b>	610	610	G	5

Inclined. Aluminium to rubber

# HDPE drainage

## PIPE TEMPERED

PIPE LENGTH = 5 M



d <sub>1</sub>	Code	e	cm <sup>2</sup>	Qty
40	<b>S 10 04 00</b>	3.0	9.10	94
50	<b>S 10 05 00</b>	3.0	15.20	167
56	<b>S 10 56 00</b>	3.0	19.60	149
63	<b>S 10 06 00</b>	3.0	25.50	116
75	<b>S 10 07 00</b>	3.0	37.40	81
90	<b>S 10 09 00</b>	3.5	54.10	57

Pipe classification: 40-160=12.5 200-315=16  
cm<sup>2</sup> = cross sectional area of flow

d <sub>1</sub>	Code	e	cm <sup>2</sup>	Qty
110	<b>S 10 11 00</b>	4.2	80.70	75
125	<b>S 10 12 00</b>	4.8	104.20	63
160	<b>S 10 16 00</b>	6.2	171.10	39
200	<b>S 10 20 00</b>	6.2	276.41	20
250	<b>S 10 25 00</b>	7.7	431.52	12
315	<b>S 10 31 00</b>	9.7	685.35	10

## ELECTROFUSION COUPLER AKAFUSION

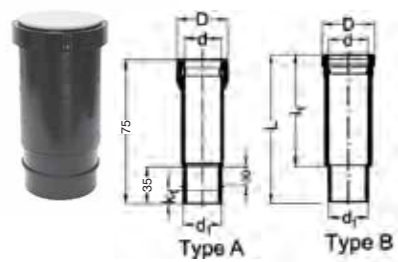


d <sub>1</sub>	Code	D	L	System	Qty
40	<b>S 41 04 95</b>	52	54	5A/80s	20
50	<b>S 41 05 95</b>	62	54	5A/80s	20
56	<b>S 41 56 95</b>	68	54	5A/80s	20
63	<b>S 41 06 95</b>	75	54	5A/80s	20
75	<b>S 41 07 95</b>	87	54	5A/80s	20
90	<b>S 41 09 95</b>	102	56	5A/80s	20

d <sub>1</sub>	Code	D	L	System	Qty
110	<b>S 41 11 95</b>	122	58	5A/80s	20
125	<b>S 41 12 95</b>	137	66	5A/80s	10
160	<b>S 41 16 95</b>	172	66	5A/80s	5
200	<b>S 41 20 65</b>	233	175	220V/420s	1
250	<b>S 41 25 65</b>	283	175	220V/420s	1
315	<b>S 41 31 65</b>	349	175	220V/420s	1

## EXPANSION SOCKET ELECTROFUSION

WITH PROTECTION PLUG: SBR SEAL



Type A					
d <sub>1</sub>	Code	D	d	L	Qty
75	<b>S 42 07 20</b>	100	76	256	20
90	<b>S 42 09 20</b>	116	91	256	20
110	<b>S 42 11 20</b>	137	112	256	20
125	<b>S 42 12 20</b>	153	127	256	10
160	<b>S 42 16 20</b>	189	162	256	5

Type B						
d <sub>1</sub>	Code	D	d	L	I <sub>1</sub>	Qty
40	<b>S 40 04 20</b>	58	41	172	135	20
50	<b>S 40 05 20</b>	68	51	172	135	20
56	<b>S 40 56 20</b>	74	57	172	135	20
63	<b>S 40 06 20</b>	* 78	64	155	135	20
200	<b>S 40 20 20</b>	** 230	202	460	230	1
250	<b>S 40 25 20</b>	** 300	253	480	250	1
315	<b>S 40 31 20</b>	** 370	319	510	270	1

\* butt-weld only. \*\* without protection plug.

## PLUG-IN SOCKET

WITH PROTECTION PLUG: SBR SEAL



d <sub>1</sub>	Code	D	d	L	I <sub>1</sub>	Qty
40	<b>S 42 04 50</b>	53	41	73	54	50
50	<b>S 42 05 50</b>	67	51	75	54	50
56	<b>S 42 56 50</b>	72	57	80	54	20
63	<b>S 42 06 50</b>	84	64	93	69	20
75	<b>S 42 07 50</b>	96	76	95	69	20

butt-weld only

## BEND 90°



d <sub>1</sub>	Code	l <sub>1</sub>	r	Qty
160	<b>S 11 16 91</b>	160	160	10
200	<b>S 11 20 91</b>	205	200	10

Butt-weld only

d <sub>1</sub>	Code	l <sub>1</sub>	r	Qty
250	<b>S 11 25 91</b>	290	265	1
315	<b>S 11 31 91</b>	340	300	1

## BEND 90°



d <sub>1</sub>	Code	l <sub>1</sub>	l <sub>2</sub>	r	k <sub>1</sub>	Qty
40	<b>S 11 04 92</b>	93	43	40	45	50
50	<b>S 11 05 92</b>	103	53	50	45	50
56	<b>S 11 56 92</b>	120	59	56	55	20
63	<b>S 11 06 92</b>	130	66	65	60	20

Long Radius.  
Electrofusible at one side

d <sub>1</sub>	Code	l <sub>1</sub>	l <sub>2</sub>	r	k <sub>1</sub>	Qty
75	<b>S 11 07 92</b>	140	78	75	60	25
90	<b>S 11 09 92</b>	155	93	90	60	25
110	<b>S 11 11 92</b>	180	113	110	60	20
125	<b>S 11 12 92</b>	190	128	125	60	10

## BEND 15°



d <sub>1</sub>	Code	l <sub>1</sub>	r	k <sub>1</sub>	Qty
110	<b>S 18 11 15</b>	125	165	65	1
125	<b>S 18 12 15</b>	150	188	45	1
160	<b>S 18 16 15</b>	175	240	100	1

Fabricated

d <sub>1</sub>	Code	l <sub>1</sub>	r	k <sub>1</sub>	Qty
200	<b>S 18 20 15</b>	200	300	125	1
250	<b>S 18 25 15</b>	225	375	135	1
315	<b>S 18 31 15</b>	250	473	175	1

## BEND 30°



d <sub>1</sub>	Code	l <sub>1</sub>	r	k <sub>1</sub>	Qty
110	<b>S 18 11 30</b>	125	165	60	1
125	<b>S 18 12 30</b>	150	188	85	1
160	<b>S 18 16 30</b>	175	240	100	1

Fabricated

d <sub>1</sub>	Code	l <sub>1</sub>	r	k <sub>1</sub>	Qty
200	<b>S 18 20 30</b>	200	200	115	1
250	<b>S 18 25 30</b>	225	255	125	1
315	<b>S 18 31 30</b>	250	320	135	1





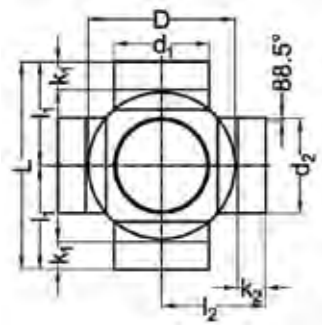


# HDPE drainage

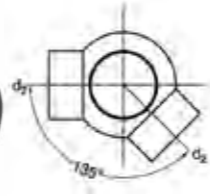
## CLEAN OUT BRANCH 45°

d <sub>1</sub> /d <sub>2</sub>	1 DOUBLE 90°		2 DOUBLE 135°		3 DOUBLE 180°		4 TRIPLE 90°		5 TRIPLE 135°		6 FOURFOLD 90°		L	I <sub>1</sub>	I <sub>2</sub>	D	k <sub>1</sub>	k <sub>2</sub>	Qty
	Code	Code	Code	Code	Code	Code	Code	Code	Code	Code									
110/50	S 24 11 14	S 24 11 24	S 24 11 34	S 34 11 14	S 34 11 24	S 44 11 14							240	120	130	170	30	20	1
110/56	S 24 11 15	S 24 11 25	S 24 11 35	S 34 11 15	S 34 11 25	S 44 11 15							240	120	130	170	30	20	1
110/63	S 24 11 16	S 24 11 26	S 24 11 36										240	120	130	170	30	20	1
110/75	S 24 11 17	S 24 11 27	S 24 11 37	S 34 11 17	S 34 11 27	S 44 11 17							240	120	130	170	30	20	1
110/90	S 24 11 19	S 24 11 29	S 24 11 39	S 34 11 19	S 34 11 29	S 44 11 19							240	120	130	170	30	20	1
110/110	S 24 11 01	S 24 11 02	S 24 11 03	S 34 11 01	S 34 11 02	S 44 11 01							240	120	110	170	30	30	1
125/75	S 24 12 17	S 24 12 27	S 24 12 37	S 34 12 17	S 34 12 27	S 44 12 17							260	130	145	190	30	20	1
125/110	S 24 12 01	S 24 12 02	S 24 12 03	S 34 12 01	S 34 12 02	S 44 12 01							260	130	125	190	30	40	1
125/125	S 24 12 12	S 24 12 22	S 24 12 32	S 34 12 12	S 34 12 22	S 44 12 12							260	130	125	190	30	40	1

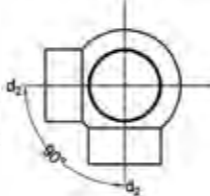
## GENERAL DIMENSIONS



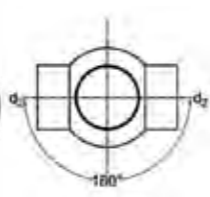
1 DOUBLE BALL BRANCH 88.5°  
FABRICATED - 90°



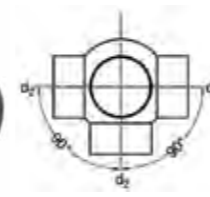
2 DOUBLE BALL BRANCH 88.5°  
FABRICATED - 135°



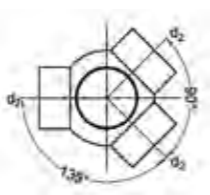
3 DOUBLE BALL BRANCH 88.5°  
FABRICATED - 180°



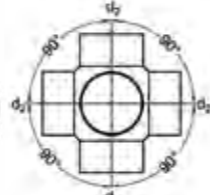
4 TRIPLE BALL BRANCH 88.5°  
FABRICATED - 90°



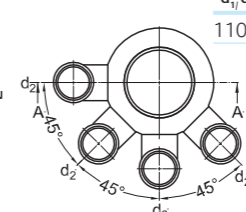
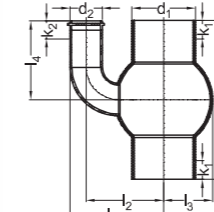
5 TRIPLE BALL BRANCH 88.5°  
FABRICATED - 135°



6 FOURFOLD BALL BRANCH 88.5°  
FABRICATED - 90°

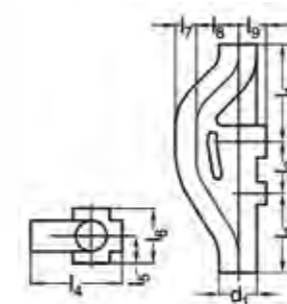


## FOUR WAY SOIL MANIFOLD 135°



d <sub>1</sub> /d <sub>2</sub>	Code	L	L <sub>1</sub>	L <sub>2</sub>	L <sub>3</sub>	L <sub>4</sub>	k <sub>1</sub>	k <sub>2</sub>	Qty
110/56	S 44 11 56	275	162	134	85	136	30	70	1

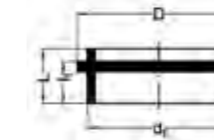
## AERATOR AKAVENT



d <sub>1</sub>	Code	L	I <sub>1</sub>	I <sub>2</sub>	I <sub>3</sub>	I <sub>4</sub>	I <sub>5</sub>	I <sub>6</sub>	I <sub>7</sub>	I <sub>8</sub>	I <sub>9</sub>	Qty
110	S 60 11 07 *	750	320	170	260	275	90	180	55	130	90	1
160	S 60 11 07 *	715	320	160	235	310	100	200	75	125	110	1

\* 1/2/3 = max. Ø 110 mm - 4/5/6 = max. Ø 75 mm  
butt-weld only

## END CAP



d <sub>1</sub>	Code	D	L	I <sub>1</sub>	Qty
40	S 67 04 07	46	15	11	20
50	S 67 05 07	57	16	12	20
56	S 67 56 07	64	16	12	20
63	S 67 06 07	71	18	14	20
75	S 67 07 07	85	21	16	20
90	S 67 09 07	100	19	19	20
110	S 67 11 07	120	19	19	20

Butt-weld only. End cap size 125-315 see Art. Nr. 67xx09.

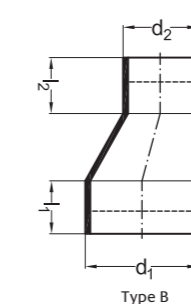
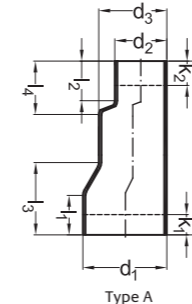
## END CAP HDPE



d <sub>1</sub>	Code	L	Qty
125	S 67 12 09	35	1
160	S 67 16 09	45	1
200	S 67 20 09	55	1
250	S 67 25 09	30	1
315	S 67 31 09	30	1

Butt-weld only. Sizes 40-110 see Art. Nr. 67xx07.

## REDUCER ECCENTRIC LONG



d <sub>1</sub>	Code	L	I <sub>1</sub>	I <sub>2</sub>	I <sub>3</sub>	I <sub>4</sub>	d <sub>3</sub>	k <sub>1</sub>	k <sub>2</sub>	Qty
200/110	S 14 20 11 *	335	95	36	165	55	160	75	20	1
200/125	S 14 20 12 *	335	95	36	165	55	160	75	20	1
200/160	S 14 20 16 **	260	95	95				75	75	1
250/200	S 14 25 20 **	290	105	95				85	75	1
315/200	S 14 31 20 *	580	115	95	235	190	250	95	75	1
315/250	S 14 31 25 **	340	115	105				75	85	1

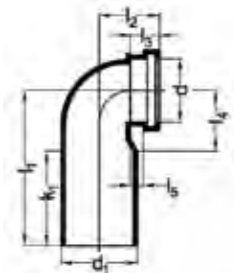
\* type A \*\* type B



# HDPE drainage

## WC CONNECTOR, 90°

WITH PROTECTION PLUG: SBR SEAL

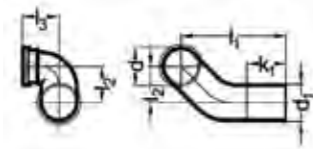


d <sub>1</sub> /d	Code	I <sub>1</sub>	I <sub>2</sub>	I <sub>3</sub>	I <sub>4</sub>	I <sub>5</sub>	k <sub>1</sub>	Qty
90/90	<b>S 50 09 84</b>	225	76	34	83	17	120	10
110/90	<b>S 50 11 85</b>	225	76	34	95	17	120	10
110/110	<b>S 50 11 82</b> *	225	75	30	92	19	120	10
110/110	<b>S 50 11 83</b> *	300	75	30	92	19	195	10

\* NBR O-ring

## WC CONNECTOR, 90° (HORIZONTAL)

WITH PROTECTION PLUG: SBR SEAL



Left

d <sub>1</sub> /d	Code	I <sub>1</sub>	I <sub>2</sub>	I <sub>3</sub>	k <sub>1</sub>	Qty
90/90	<b>S 50 09 32</b>	300	100	75	140	5
110/90	<b>S 50 10 32</b>	350	100	75	170	5
110/110	<b>S 50 11 32</b> *	350	100	75	170	5

\* NBR O-ring

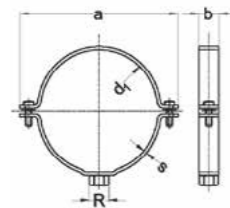
Right

d <sub>1</sub> /d	Code	I <sub>1</sub>	I <sub>2</sub>	I <sub>3</sub>	k <sub>1</sub>	Qty
90/90	<b>S 50 09 33</b>	300	100	75	140	5
110/90	<b>S 50 10 33</b>	350	100	75	170	5
110/110	<b>S 50 11 33</b> *	350	100	75	170	5

\* NBR O-ring

## ANCHOR BRACKET

FOR FIXING TO WALL

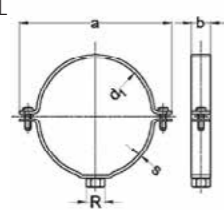


d <sub>1</sub>	Code	a	b	s	R	Qty
40	<b>S 70 04 78</b>	93	30	2.5	"1/2"	1
50	<b>S 70 05 78</b>	104	30	2.5	"1/2"	1
56	<b>S 70 56 78</b>	113	30	2.5	"1/2"	1
63	<b>S 70 06 78</b>	113	30	2.5	"1/2"	1
75	<b>S 70 07 78</b>	126	30	2.5	"1/2"	1
90	<b>S 70 09 78</b>	143	30	2.5	"1/2"	1

d <sub>1</sub>	Code	a	b	s	R	Qty
110	<b>S 70 11 78</b>	161	30	2.5	"1/2"	1
125	<b>S 70 12 78</b>	178	30	2.5	"1/2"	1
160	<b>S 70 16 78</b>	215	30	2.5	"1/2"	1
200	<b>S 70 20 80</b>	283	40	4	"1"	1
250	<b>S 70 25 80</b>	333	40	4	"1"	1
315	<b>S 70 31 80</b>	398	40	4	"1"	1

## GUIDE BRACKET

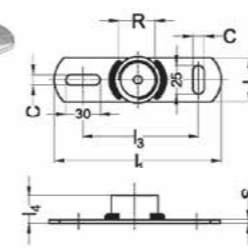
FOR FIXING TO WALL



d <sub>1</sub>	Code	a	b	s	R	Qty
40	<b>S 70 04 10</b>	93	30	2.5	M10	1
50	<b>S 70 05 10</b>	104	30	2.5	M10	1
56	<b>S 70 56 10</b>	113	30	2.5	M10	1
63	<b>S 70 06 10</b>	113	30	2.5	M10	1
75	<b>S 70 07 10</b>	126	30	2.5	M10	1

d <sub>1</sub>	Code	a	b	s	R	Qty
90	<b>S 70 09 10</b>	143	30	2.5	M10	1
110	<b>S 70 11 10</b>	161	30	2.5	M10	1
125	<b>S 70 12 10</b>	178	30	2.5	M10	1
160	<b>S 70 16 10</b>	215	30	2.5	M10	1

## MOUNTING PLATE



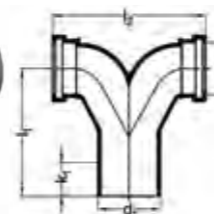
Code	R	I <sub>1</sub>	I <sub>2</sub>	I <sub>3</sub>
<b>S 70 94 78</b> *	1/2"	145	38	90
<b>S 70 94 10</b> **	M10	145	38	90
<b>S 70 94 80</b> **	1"	145	38	90

\* for anchor bracket \*\* for guide bracket

I <sub>4</sub>	S	C	Qty
25	4	8,5	1
14	4	8,5	1
25	4	8,5	1

## DOUBLE WC CONNECTOR, 90° (VERTICAL)

WITH PROTECTION PLUG



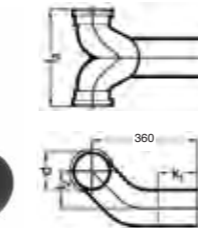
d <sub>1</sub> /d	Code	I <sub>1</sub>	I <sub>2</sub>	k <sub>2</sub>	Qty
110/90	<b>S 50 09 34</b> *	225	275	80	5

\* EPDM O-ring \*\* NBR O-ring

d <sub>1</sub> /d	Code	I <sub>1</sub>	I <sub>2</sub>	k <sub>2</sub>	Qty
110/110	<b>S 50 11 34</b> **	185	270	60	5

## DOUBLE WC CONNECTOR, 90° (HORIZONTAL)

SBR SEAL



d <sub>1</sub> /d	Code	I <sub>2</sub>	I <sub>3</sub>	k <sub>1</sub>	Qty
110/90	<b>S 50 09 35</b> *	100	275	200	1

\* EPDM O-ring \*\* NBR O-ring

d <sub>1</sub> /d	Code	I <sub>1</sub>	I <sub>2</sub>	k <sub>2</sub>	Qty
110/110	<b>S 50 11 35</b> **	100	270	200	1

## SOCKET FOR WC CONNECTOR



d <sub>1</sub>	Code	d	D	L	I <sub>1</sub>	Qty
90	<b>S 50 09 51</b>	90	113	49	38	10
110	<b>S 50 11 51</b>	90	111	31	20	10

Butt-weld only  
Art. Nr. 501151 = EPDM O-ring. Art. Nr. 501171 = NBR O-ring.

d <sub>1</sub>	Code	d	D	L	I <sub>1</sub>	Qty
110	<b>S 50 11 71</b>	110	130	45	28	10

## PROTECTION PLUG



d <sub>1</sub>	Code	D	D <sub>1</sub>	D <sub>2</sub>	I <sub>1</sub>	Qty
90	<b>S 43 09 19</b>	109	90	103	27.0	50

d <sub>1</sub>	Code	D	D <sub>1</sub>	D <sub>2</sub>	I <sub>1</sub>	Qty
110	<b>S 43 11 19</b>	130	105	119	23.5	50

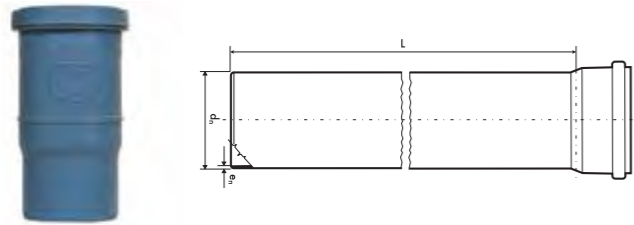
## PIPE SCRAPER MANUAL



Code	Qty
<b>S 41 96 00</b>	1

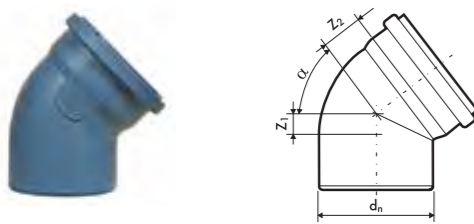
# dBlue acoustic drainage

## PIPE WITH SOCKET



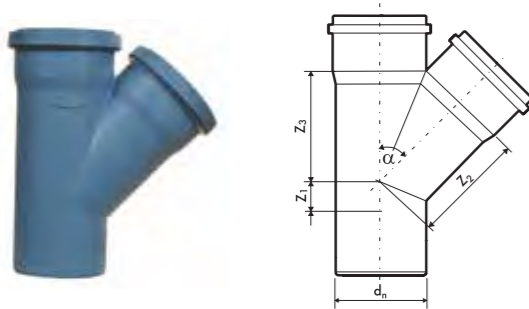
dn	Code	en	L	Qty
40	<a href="#">PPA-040-018-300-D</a>	1.8	3000	10
50	<a href="#">PPA-050-018-300-D</a>	1.8	3000	10
110	<a href="#">PPA-110-034-300-D</a>	3.4	3000	10
160	<a href="#">PPA-160-049-300-D</a>	4.9	3000	28

## BEND



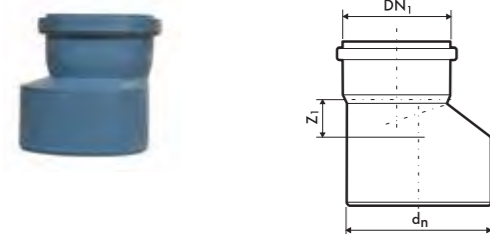
dn	Code	α°	Z <sub>1</sub>	Z <sub>2</sub>	Qty
40	<a href="#">VKL-040-000-15D</a>	15°	4	7	20
50	<a href="#">VKL-050-000-15D</a>	15°	5	9	20
110	<a href="#">VKL-110-000-15D</a>	15°	9	14	8
40	<a href="#">VKL-040-000-30D</a>	30°	7	10	20
50	<a href="#">VKL-050-000-30D</a>	30°	9	12	20
110	<a href="#">VKL-110-000-30D</a>	30°	17	22	8
40	<a href="#">VKL-040-000-45D</a>	45°	10	14	20
50	<a href="#">VKL-050-000-45D</a>	45°	12	16	20
110	<a href="#">VKL-110-000-45D</a>	45°	25	29	14
160	<a href="#">VKL-160-000-45D</a>	45°	36	42	6
40	<a href="#">VKL-040-000-67D</a>	67.5°	-	-	20
50	<a href="#">VKL-050-000-67D</a>	67.5°	20	23	20
110	<a href="#">VKL-110-000-67D</a>	67.5°	40	44	14
40	<a href="#">VKL-040-000-90D</a>	90°	23	26	20
50	<a href="#">VKL-050-000-90D</a>	90°	28	31	20
110	<a href="#">VKL-110-000-90D</a>	90°	57	61	14
160	<a href="#">VKL-160-000-90D</a>	90°	83	89	4

## BEND



dn	Code	α°	Z <sub>1</sub>	Z <sub>2</sub>	Z <sub>3</sub>	Qty
40/40	<a href="#">VTR-040-040-45D</a>	45°	10	49	49	20
50/40	<a href="#">VTR-050-040-45D</a>	45°	12	61	61	20
50/50	<a href="#">VTR-050-050-45D</a>	45°	12	61	61	20
110/40	<a href="#">VTR-110-040-45D</a>	45°	-	104	91	6
110/50	<a href="#">VTR-110-050-45D</a>	45°	-	104	91	6
110/110	<a href="#">VTR-110-110-45D</a>	45°	25	134	134	7
160/110	<a href="#">VTR-160-110-45D</a>	45°	1	179	173	3
160/160	<a href="#">VTR-160-160-45D</a>	45°	22	210	210	2
40/40	<a href="#">VTR-040-040-90D</a>	90°	23	25	25	20
50/40	<a href="#">VTR-050-040-90D</a>	90°	23	25	25	20
50/50	<a href="#">VTR-050-050-90D</a>	90°	28	30	30	20
110/40	<a href="#">VTR-110-040-90D</a>	90°	28	60	32	6
110/50	<a href="#">VTR-110-050-90D</a>	90°	28	60	32	6
110/110	<a href="#">VTR-110-110-90D</a>	90°	57	62	62	7
160/110	<a href="#">PTR-160-110-87D</a>	90°	58	92	64	3
160/160	<a href="#">VTR-160-160-90D</a>	90°	83	92	92	2

## REDUCER



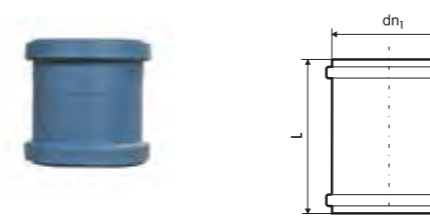
dn DN <sub>1</sub>	Code	Z <sub>1</sub>	Qty
50/40	<a href="#">VRD-050-040-00D</a>	12	15
110/50	<a href="#">VRD-110-050-00D</a>	40	17
160/110	<a href="#">VRD-160-110-00D</a>	14	15

## DOUBLE SOCKET COUPLING



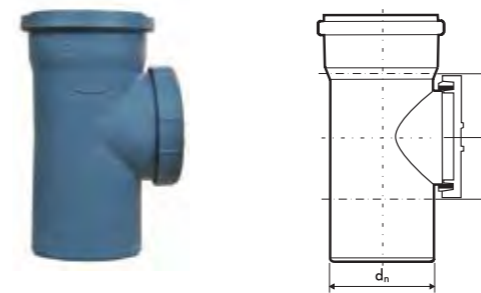
dn <sub>1</sub>	Code	L	Qty
40	<a href="#">VMD-040-000-00D</a>	125	20
50	<a href="#">VMD-050-000-00D</a>	105	20
110	<a href="#">VMD-110-000-00D</a>	128	6
160	<a href="#">VMD-160-000-00D</a>	179	6

## SLIP COUPLING



dn <sub>1</sub>	Code	L	Qty
40	<a href="#">VMP-040-000-00D</a>	137	20
50	<a href="#">VMP-050-000-00D</a>	105	20
110	<a href="#">VMP-110-000-00D</a>	128	6
160	<a href="#">VMP-160-000-00D</a>	179	6

## ACCESS PIPE



dn <sub>1</sub>	Code	Z <sub>1</sub>	Z <sub>2</sub>	Qty
50	<a href="#">VCZ-050-000-00D</a>	28	30	10
110	<a href="#">VCZ-110-000-00D</a>	58	62	6
160	<a href="#">VCZ-160-000-00D</a>	49	68	6

## SOCKET PLUG



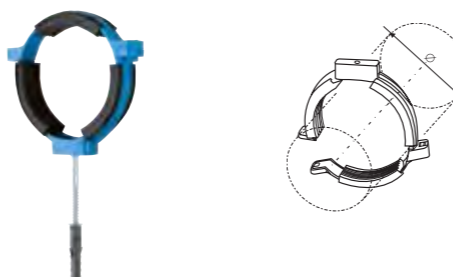
dn <sub>1</sub>	Code	L	Qty
40	<a href="#">VKK-040-000-00D</a>	39	20
50	<a href="#">VKK-050-000-00D</a>	39	20
110	<a href="#">VKK-110-000-00D</a>	46	20
160	<a href="#">VKK-160-000-00D</a>	48	10

## PIPE CLIP



Ø	Code	Qty
40	<a href="#">POB-040-000-000</a>	10

## ACOUSTIC PIPE CLIP



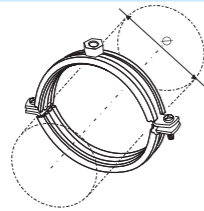
Ø	Code	Qty
50	<a href="#">POB-050-000-000</a>	10
110	<a href="#">POB-110-0M8-000</a>	5

\*Supplied with fixing screw and rawl plug, which can be removed for suspended pipework

# dBlue acoustic drainage

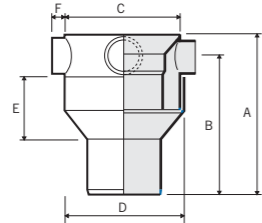
# WC connectors

## ACOUSTIC METAL PIPE CLIP



Ø	Code	Qty
160	<b>POB-160-000-000*</b>	1

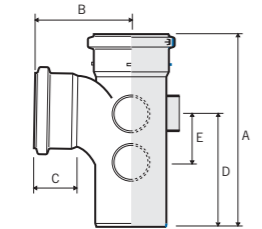
## COLLAR BOSS



dn	Code	Angle	A	B	C	D	E	F	Qty
110	<b>SCB41BL*</b>	87.5°	245	210	178	186	100	20	1

Solvent socket/spigot connection for PVCu/PVCu.  
Spigot tail can be inserted into push-fit connection.

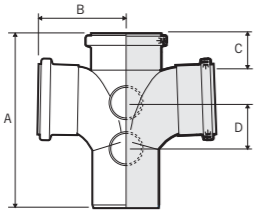
## FIVE BOSS BRANCH



dn	Code	Angle	A	B	C	D	E	Qty
110	<b>SY405BL*</b>	87.5°	300	150	60	175	76	4

Push-fit sockets/spigot

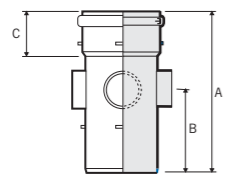
## DOUBLE BRANCH



dn	Code	Angle	A	B	C	D	Qty
110	<b>SY404BL*</b>	87.5°	289	141	54	76	4

Push-fit sockets/spigot

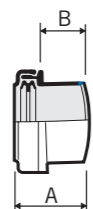
## BOSS PIPE



dn	Code	Angle	A	B	C	Qty
110	<b>SW40BL*</b>	87.5°	300	150	60	4

Push-fit sockets/spigot

## BOSS CONNECTOR



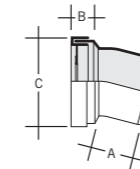
dn	Code	Angle	A	B	Qty
40	<b>SA421BL*</b>	87.5°	43	21	40
50	<b>SA420BL*</b>	87.5°	74	45	40

For integrity, all boss adaptors must be solvent welded into boss upstands.

Size mm	Code	Angle	A	B	Colour	Qty
32	<b>SA411</b>	87½°	43	21	W B G	50
40	<b>SA421</b>	87½°	43	21	W B G	40
50	<b>SA420</b>	87½°	66	45	B G	40

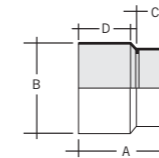
For use with ABS & PVCu waste systems

## STRAIGHT CONNECTORS



Size mm	Code	Angle	A	B	C	Colour	Qty
110	<b>SG40</b>	14°	63	50	134	W	4

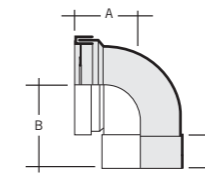
Spigot



Size mm	Code	Angle	A	B	C	D	Colour	Qty
110	<b>SGS41W*</b>	14°	139	134	53	80	W	20

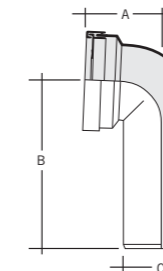
Solvent socket. Pan socket to be trimmed to suit WC spigot length

## BENT CONNECTORS



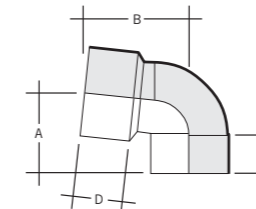
Size mm	Code	Angle	A	B	C	Colour	Qty
110	<b>ST40</b>	90°	106	125	51	W	4

Solvent socket



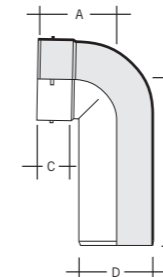
Size mm	Code	Angle	A	B	C	Colour	Qty
110	<b>ST41W</b>	90°	106	240	210	W	4

Long spigot



Size mm	Code	Angle	A	B	C	D	Colour	Qty
110	<b>STS41W*</b>	85°	104	156	53	80	W	4

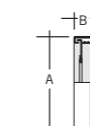
Solvent socket. Pan socket to be trimmed to suit WC spigot length



Size mm	Code	Angle	A	B	C	D	Colour	Qty
110	<b>SBS40W</b>	90°	114	240	48	110	W	4

Long spigot/ solvent socket

## WC SEAL AND CAP



### 83 – 114mm outlet

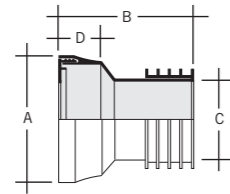
Size mm	Code	A	B	Colour	Qty
	<b>SA323W</b>	141	24		70

For use with SGS41 and STS41

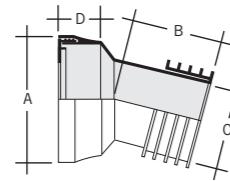
# Universal push-fit WC connectors

# WC manifold system

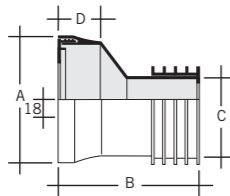
## STRAIGHT CONNECTORS



Size mm	Code	Angle	A	B	C	D	Colour	Qty
100	<b>SWC11</b>		132	110	81	46	W	25

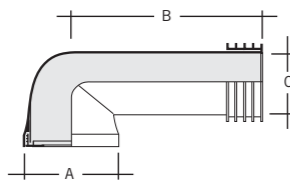


Size mm	Code	Angle	A	B	C	D	Colour	Qty
100	<b>SWCB14</b>	14°	132	61	81	46	W	20



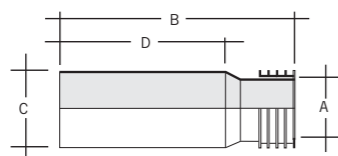
Size mm	Code	Angle	A	B	C	D	Colour	Qty
100	<b>SWC22</b>	22°	132	115	81	46	W	25

## LONG BENT CONNECTOR



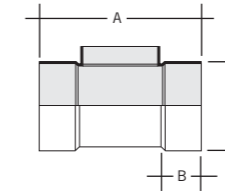
Size mm	Code	Angle	A	B	C	Colour	Qty
100	<b>SWCB90</b>	90°	132	235	81	W	10

## EXTENSION PIECE



Size mm	Code	A	B	C	D	Colour	Qty
100	<b>SWCE33</b>	81	300	116	226	W	12

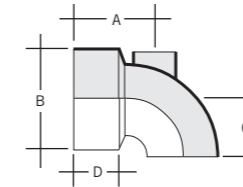
## BRANCH



Size mm	Code	A	B	C	Colour	Qty
110x90	<b>SM41W</b>	214	50	116	W	10

Solvent sockets

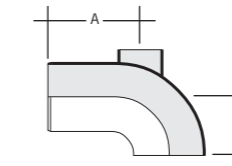
## ADJUSTABLE WC BEND



Size mm	Code	Angle	A	B	C	D	Colour	Qty
90	<b>SM42W*</b>	50-90°	108	134	75	60	W	15

50mm boss upstand  
Pan socket to be trimmed to suit WC spigot length

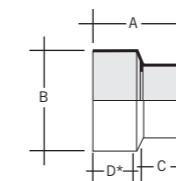
## ADJUSTABLE SPIGOT BEND



Size mm	Code	Angle	A	B	Colour	Qty
90	<b>SM43W</b>	50-90°	119	75	W	15

50mm boss upstand

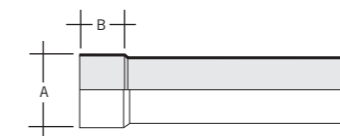
## WC CONNECTOR



Size mm	Code	A	B	C	D	Colour	Qty
90	<b>SM44W*</b>	117	134	46	80	W	30

50mm boss upstand  
Pan socket to be trimmed to suit WC spigot length

## EXTENSION PIPE



Size mm	Code	A	B	Colour	Qty
90	<b>SM45W</b>	96	46	W	50

300mm  
For use with SM43 only

## WC SEAL AND CAP



### 83-114mm outlet

Size mm	Code	A	B	Colour	Qty
90	<b>SA323W</b>	141	24	W	70

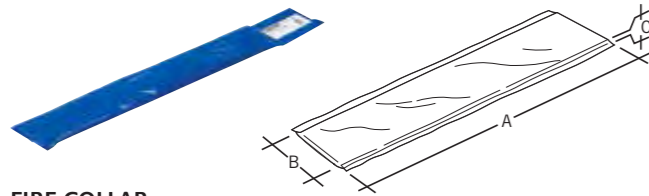
For use with SM42 and SM44

\*When fitted to short WC pan spigots, pan socket should be trimmed to suit before SA323W (not supplied) is fitted. Push-fit WC connectors are manufactured to BS 5627. CAD drawing available to download from marleypd.co.uk

\*When fitted to short WC pan spigots, pan socket should be trimmed to suit before SA323W (not supplied) is fitted.

## Fire protection

### PIPE WRAP



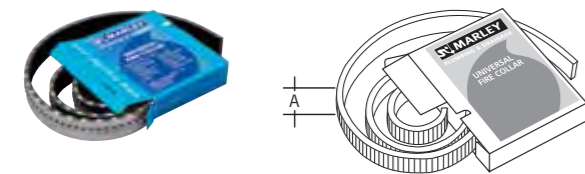
Size mm	Code	A	B	C	Colour	Qty
110	<b>SFW44</b>	395	100	13		200

### FIRE COLLAR



Size mm	Code	A	B	C	Colour	Qty
110	<b>SFC44</b>	165	43	148		1

### UNIVERSAL FIRE COLLAR



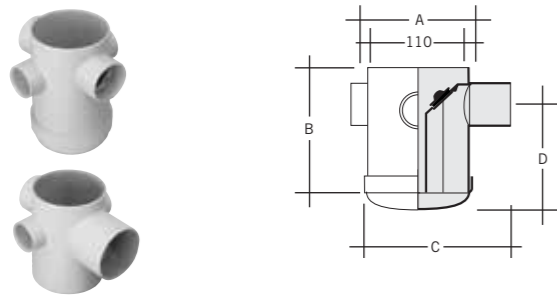
Size mm	Code	A	Colour	Qty
2200	<b>UFC1</b>	50		8

Cut to suit 55mm – 160mm (3x160mm or 5x110mm or 6x82mm or 8x50mm)

Marley Fire Protection Products provide up to 4 hours resistance. Suitable for use with all Marley plastic drainage systems

## PVCu floor outlets

### TRAPPED FLOOR GULLIES



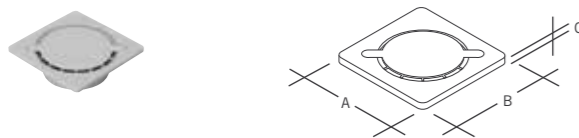
Size mm	Code	A	B	C	D	Colour	Qty
50	<b>SFG42AS</b>	117	164	145	116	G	8

Solvent outlet. 90mm adjustable water seal

Size mm	Code	A	B	C	D	Colour	Qty
82	<b>SFG43AS</b>	117	164	175	100	G	8

Solvent outlet. 75mm adjustable water seal

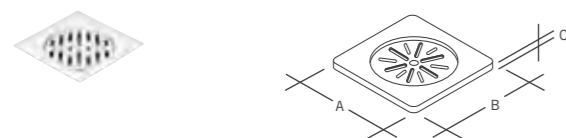
### PVC FLOOR TILE



Code	A	B	C	Colour	Qty
<b>SGG3</b>	150	150	7	G	10

For use with SFG42AS and SFG43AS only

### STAINLESS STEEL TILE GRATE AND COVER



Code	A	B	C	Colour	Qty
150x150 <b>SGG4</b>	150	150	7	NU	40

Grade 304 stainless steel

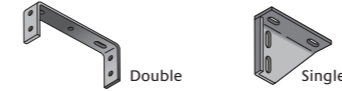
## Pipe support systems

### TWO PIECE PIPE BRACKET



Size mm	Code	Colour	Qty
110	<b>JB42</b>	NU	50
160	<b>JB62</b>	NU	50

### BASE PLATE



Size mm	Code	Support	Colour	Qty
110	<b>JB42</b>	Double support	NU	1
160	<b>JB62</b>	Double support	NU	50
	<b>JDP1</b>	Single support	NU	50

### CHANNEL STRIP



Size mm	Code	Support	Colour	Qty
2000	<b>JCS2</b>	Strip	NU	50
	<b>JCA1</b>	Angle	NU	10

### BARREL CLIP COLLAR



Code	Colour	Qty
<b>SC621</b>	NU	25

1m PVC strip when cut to length. Converts pipe bracket to pipe size (3x110mm or 2x160mm)

### NUTS AND BOLTS



Size mm	Code	Colour	Qty
20x6	<b>RNB11</b>	NU	1

## Ancillary items

### SOLVENT CEMENT



Tub 250ml	Code	Qty
	<b>KS10</b>	20

To BS EN 14680

### SILICONE LUBRICANT



Tube with sponge applicator 50g	Code	Qty
	<b>SZ50</b>	10

Bottle 100g	Code	Qty
	<b>SZ100</b>	50

Aerosol* 400ml	Code	Qty
	<b>SZ400</b>	12

Tub 500g	Code	Qty
	<b>SZ500</b>	24

Water Research Centre Approved

### SPARE RING SEALS



'T' ring	Size mm	Code	Qty
	82	<b>SR82T</b>	5
	110	<b>SR110T</b>	5
	160	<b>SR160T</b>	5

To BS EN 681/1

## British & European Standards

### BS EN 1329-1: 2014

Plastics piping systems for soil and waste discharge (low and high temperature) within the building structure – PVCu.

### BS EN 1451-1: 2000

Plastics piping systems for soil and waste discharge (low and high temperature) within the building structure – polypropylene.

### BS EN 1519-1: 2000

Plastics piping systems for soil and waste discharge (low and high temperature) within the building structure – polyethylene.

### BS 4514: 2001

Specification for PVCu soil and ventilating pipes, fittings and accessories.

### BS EN 1566-1: 2000

Specification for thermoplastics waste pipe and fittings.

### BS 5255: 1989

Specification for thermoplastics waste pipe and fittings.

### BS EN 1455-1: 2000

Plastics piping systems for soil and waste (low and high temperature) within the building structure – ABS.

### BS 5627: 1984

Specification for plastics connectors for use with horizontal outlet vitreous china WC pans.

### BS EN 14680: 2006

Specification for adhesives for non-pressure thermoplastics pipe systems.

### BS EN 681-1: 1996

Elastomeric seals. Material requirements for pipe joint seals used in water and drainage applications. Part 1 vulcanised rubber.

### BS EN ISO 9001: 2008

Quality systems. Model for Quality Assurance in Design, Development, Production, Installation and Servicing.

### BS EN ISO 14001: 2004

Environmental management systems. Requirements with guidance for use.

## Accreditations



Certificate No. 06/4325



BS EN 1329-1 : 2013  
BS 4514 : 2001  
BS EN 1566-1: 2000  
BS 5255: 1989  
BS EN 1455-1: 2000  
BS EN 1451-1: 2000  
BS EN 1519-1: 2000



BS EN ISO 9001: 2008  
BS EN ISO 14001: 2004

### Material and manufacture

Marley Plumbing & Drainage pipes and fittings for domestic sanitary pipework systems are manufactured from different plastics materials including PVCu, PVCc, ABS and Polypropylene.

The table right details the important dimensions and weights of each of the systems together with the relevant British and European Standard. All pipes are manufactured using a continuous extrusion process and fittings are produced by high-pressure injection moulding.

### Chemical and temperature resistance

Most plastics used for sanitary pipework are highly resistant to those chemicals normally found in domestic waste water and sewerage systems. Applications where chemicals and higher temperature discharges are likely to occur, the Marley Akatherm HDPE drainage range may be more suitable.

Generally the maximum working temperature of Marley soil and waste systems when subjected to continuous flow is 70°C and 75°C respectively. Higher intermittent discharges of up to 95°C may be accommodated provided the period of discharge does not exceed two minutes duration.

Alternatively, reference can be made to ISO publications TR10358 & TR7620 which provide comprehensive information on chemical and temperature resistance of plastics and rubber materials.

### Dimensions and weights

Pipe Material Standard	BS nominal size (mm/ inch)	Min	Max	Wall thickness (mm) Min	Weight kg/metre
Soil PVCu					
BS 4514	82	82.4	82.8	3.20	1.30
BS EN 1329	110	110.0	110.3	3.20	1.70
	160	160.0	160.4	3.20	2.50
Waste					
PVC-c	36/1¼	36.10	36.50	1.80	0.33
BS EN 1566	43/1½	42.70	43.10	1.80	0.41
	55/2	55.70	56.10	1.80	0.57
Waste					
ABS	36/1¼	36.10	36.50	1.80	0.20
BS EN 1455-1	43/1½	42.70	43.10	1.80	0.26
	55/2	55.70	56.10	1.80	0.35
Waste					
Polypropylene	34/1¼	34.40	34.80	1.80	0.21
BS EN 1451	41/1½	40.80	41.20	1.80	0.26
Overflow					
PVCu	21.5¾	21.55	21.70	1.10	0.11
BS EN 806-4					



### Marley HDPE

Marley Akatherm HDPE is a drainage system which offers an alternative solution to cast iron. It is particularly suited for commercial applications or where a product with high impact or abrasion resistance is required, such as hospitals, hotels, schools, as well as residential buildings. HDPE will also cope with temperature variations of -40°C to 100°C making it ideal for external as well as internal installations.



### Marley dBlue

An acoustic soil and waste range with a triple layered pipe providing quick, hygienic removal of sanitary waste water. The noise generated by the flow of water is dramatically reduced – making it perfect for multi-occupancy apartment blocks and high specification developments.



### Marley waste systems

A wide range of PVC-u, ABS and polypropylene waste ranges from 32mm to 50mm and in a variety of colours. Available with polypropylene solvent weld and push fit jointing.



### Marley rainwater

Five gutter profiles and three downpipe options provide a rainwater solution for any application. Advanced Life<sup>4</sup> technology on four of the key profiles, coupled with the benefits of the Easyclip and notching capability combine to make the Marley rainwater range the most comprehensive available.



### Marley underground systems

The Marley Plumbing & Drainage range of underground systems include the solid wall range, predominately for round the house drainage and Quantum structured wall range for sewer and highway drainage applications.



### Marley sustainable drainage

The Waterloc250 cell is ideal for use in either an underground infiltration or attenuation system. 96% of the cell volume is available to store water, minimising the extent of excavation required for the installation. The range includes Flowloc, a vortex control device, which controls the rate at which water is discharged to a surface water drain or water course.



### Marley Equator

Equator is ideal for hot & cold water or central heating installations. A tamperproof fitting with a unique grip release mechanism ensuring that the system can only be disassembled through the use of a special de-mounting tool. Equator has been designed to meet the requirements of BS 7291: Parts 1 & 3; Class S. The complete Equator system is backed by a 30 year guarantee.



### Alutec

Alutec offer modern and traditional aluminium rainwater profiles, providing solutions for any type of building. Aluminium has high visual appeal and durability, lasting for 50 years or more. The product portfolio includes Evolve; easy to install, low cost gutter systems in four profiles. The rainwater ranges are complemented by aluminium soffit and fascia systems and roof & floor outlets.



### Multikwik

The Multikwik brand is known and trusted by plumbers for its sanitary frames, cisterns, traps, compression waste systems and market leading range of pan connectors. Complementing the Marley range it provides an excellent solution to modern bathroom design with a wide choice of product options.





[marleypd.co.uk](http://marleypd.co.uk)

For general enquiries and details of your nearest stockist please call the customer services department:

**Tel: 01622 852585**

**Email: [customerservice@marleypd.co.uk](mailto:customerservice@marleypd.co.uk)**

To place an order

For delivery to **England & Wales**

**Email: [orders.lenham@marleypd.co.uk](mailto:orders.lenham@marleypd.co.uk)**

**Fax: 01622 851111**

For delivery to **Scotland**

**Email: [orders.uddingston@marleypd.co.uk](mailto:orders.uddingston@marleypd.co.uk)**

**Fax: 01698 810307**

For all estimate requests

**Email: [estimates@marleypd.co.uk](mailto:estimates@marleypd.co.uk)**

For Technical advice please call

**01622 852695**

#### **Head Office**

Lenham, Maidstone

Kent ME17 2DE

Tel: 01622 858888

Fax: 01622 858725

Email: [marketing@marleypd.co.uk](mailto:marketing@marleypd.co.uk)

#### **Scotland**

Birkenshaw Industrial Estate

Uddingston, Glasgow G71 5PA

Tel: 01698 815231

Fax: 01698 810307

#### **Export Division**

Lenham, Maidstone

Kent ME17 2DE England

Tel: +44 (0)1622 858888

Fax: +44 (0)1622 850778

Email: [export@marleypd.co.uk](mailto:export@marleypd.co.uk)

an *OAliaxis* company

March 2014