



Product Portfolio

marleypd.co.uk

Innovation & Expertise

Systems ideal for your project



Hotels



Offices



Hospitals & care homes



Schools



Infrastructure (airports, service stations etc.)



Accommodation

An introduction to Marley

The Marley brand is recognised throughout the world, offering innovative solutions for the construction industry. Now in its 60th year, Marley are experts in the field of plumbing and drainage and offer technical support as well as a wealth of product and installation knowledge.

Marley Plumbing & Drainage is part of the Aliaxis group of companies, internationally recognised as a major global supplier of construction products.

Marley hold 13 kitemark licences and 6 BBA certificates, are members of the Plastic Pipes Group of the BPF and have representation on 24 European CEN Committees.



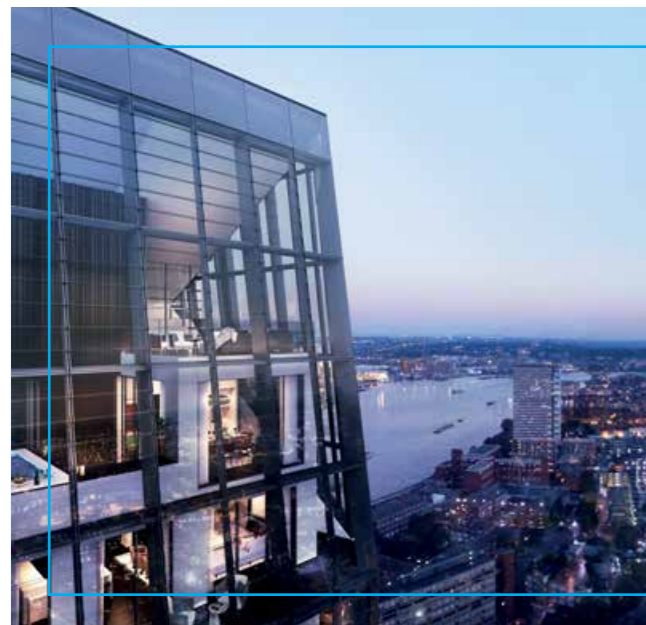
Contents

4	HDPE drainage	13	Quantum
5	Fabrications service	14	Multikwik
6	PVCu soil & waste systems	16	Equator hot & cold
7	Technical services	17	CPD
8	Acoustic soil – dBlue	18	Building Information Modelling Objects
10	Rainwater systems	19	Aliaxis Group
12	Underground drainage		



The HDPE drainage soil range is certified to BS EN 1519: 2000 (licence number KM 545820). An extension of the Marley soil & waste portfolio, the HDPE range offers an alternative solution to cast iron. The combination of the excellent material properties of HDPE with homogenous welded joints provide greater installation flexibility with a range of jointing options.

It is particularly suited for commercial applications or where a product with high impact or abrasion resistance is required, such as hospitals, hotels, schools, as well as residential buildings. HDPE will also cope with temperature variations of -40°C to 100°C making it ideal for external as well as internal installations.



Case study Dollar Bay, London

Marley provided a tailor-made plumbing solution for the Dollar Bay apartments, a 32-storey build in the heart of Canary Wharf. The build has seen a range of Marley's products installed throughout, including HDPE fabricated soil systems.

"Marley's technical team created specialised branches for us to install in the bathrooms of the apartment to level-up to toilet and basins. Their expertise in this area is second-to-none. Using the Marley Fabrications service saved us time on site and we wouldn't hesitate to use it again."

Paul Oliva, Contracts Manager at Bowmite Electrical & Mechanical, sub-contractors on the project.



Quality Product

The Marley HDPE range is the only system in the UK certified to BS EN 1519.



Technical Services

Our team of experts will provide support throughout the design process, creating drawings for each stack element and liaising with our fabrications team to ensure that every detail is to specification.

The Fabrications Team

Our dedicated team of skilled fabricators will pre-build the HDPE soil stacks in a controlled factory environment, to project specifications and to the highest quality, with pressure testing to BS EN 12056-2 on every stack as standard.



On Site Support

This is useful for particularly complex installations, where our years of industry experience may be beneficial.

Delivered when and where you need it

Following drawing sign off, a delivery schedule is agreed.

Deliveries will arrive to the agreed schedule, saving precious space on site.



Why choose a fabricated system?



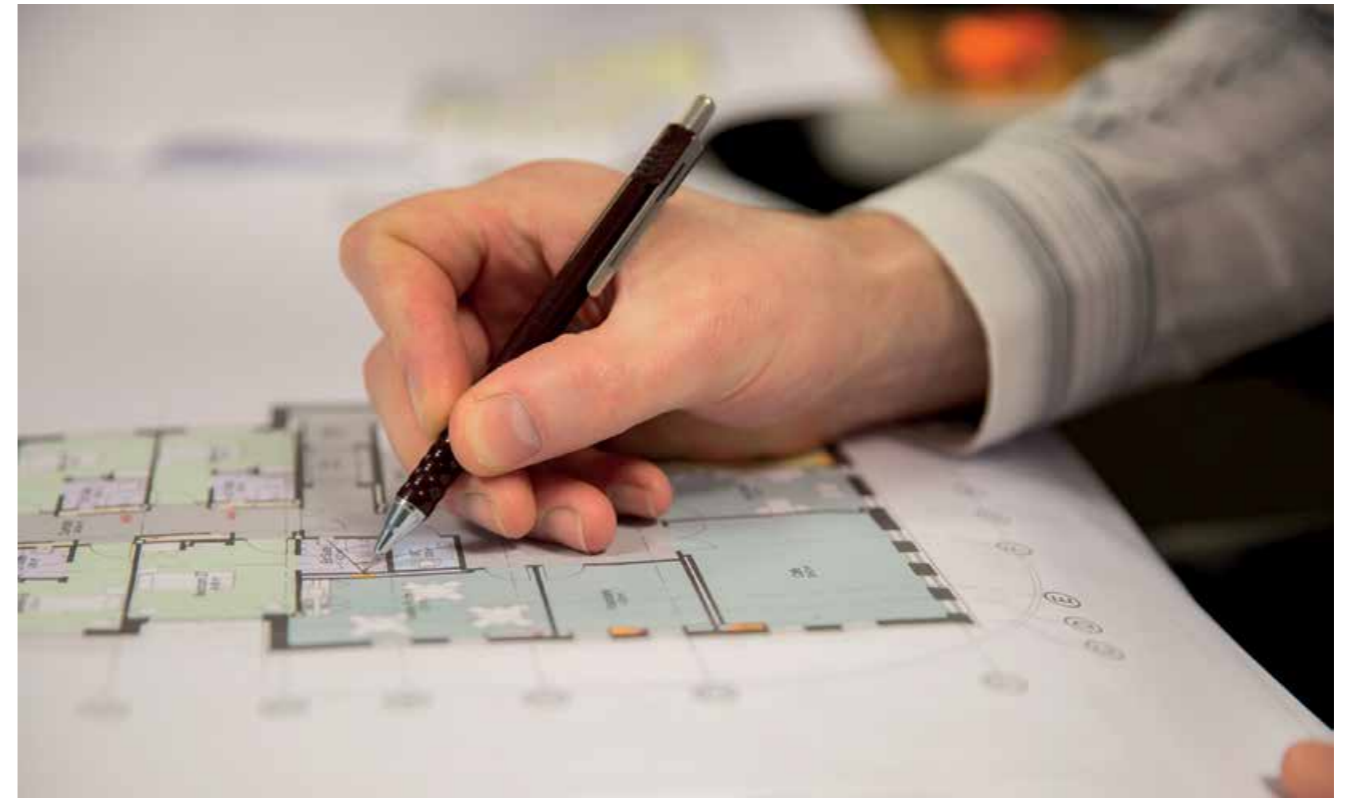
Soil systems

The PVCu soil system is available in 82, 110 and 160mm push-fit and solvent weld options incorporating socketed and plain ended pipe.

110 and 160mm pipe support components have been designed specifically to support horizontal or vertical suspended PVCu pipework.

Pipes and fittings are also suitable for use as internal and external rainwater pipes to drain flat roofs and metal gutter systems on commercial and industrial buildings.

- Pushfit or solvent weld jointing options
- Quick and easy installation saving time and money
- All collar bosses are individually pressure tested to ensure joint integrity
- Hole-saw locator on all bosses for ease of installation



Designing the most efficient drainage system for a project is a skill for which the Marley Technical Services team are renowned. Marley Plumbing & Drainage provide technical support to all those involved with the specification and installation of our products.

Waste systems

Solvent waste		Push-fit waste	Overflow	Multikwik [®]	
PVCu	ABS	Polypropylene	PVCu	Compression waste Polypropylene	Traps Polypropylene
Suitable for internal and external applications.	Lightweight and cost effective for internal installation. Easy to cut joint and install.	For internal use, ideally suited to fast installation. Cost effective solution where systems are being installed or modified.	A complete range of pipework and fittings for overflow and boiler condensate applications.	Multi-fit compression socket, for internal use. Easy installation to similar sized new or existing plastic and copper pipework.*	A range of traps, which enable quick & easy installation to any new or existing plastic or copper pipework.*

*Chrome plated versions available

Our technical team can help you spec the system you need

Years of experience mean that we can support you throughout your tender process and assist with any technical and installation requirements.

- DESIGN SERVICES
- VALUE ENGINEERING
- TECHNICAL ADVICE
- FABRICATIONS SERVICE
- RAINWATER CALCULATIONS
- MATERIAL TAKE-OFFS
- CAD FILES
- BIM OBJECTS
- FIELD AND SITE SUPPORT
- SPECIFICATION
- SPECIAL FABRICATIONS
- IN-HOUSE AND EXTERNAL TRAINING
- CPD SEMINARS



Marley acoustic soil and waste range with a layered pipe, provides quick, hygienic removal of sanitary waste water.

The noise generated by the flow of water is dramatically reduced – making it perfect for multi-occupancy apartment blocks, as well as hospitals and hotels, where reduced noise levels are required.

Used in conjunction with the acoustic pipe clips, the acoustic system is designed to reduce noise and acoustic vibrations to a level of 19dB at 4 l/s discharge rate. It is also lightweight, resistant to temperature change and is jointed using the push-fit ring seal method.

Features and benefits

- Light weight
- Easy to handle on site
- Secure push-fit jointing system
- Quick and easy to install
- Provides quick and hygienic removal of sanitary waste water
- Dramatically reduce the sound of waste water
- Available in sizes 40mm, 50mm, 110mm and 160mm
- Compatible with the Marley PVCu Soil and Waste system for branch connection
- 4 l/s discharge rate

	<p>Internal layer</p> <ul style="list-style-type: none"> ● Material PP ● Colour [light-grey] ● Resistance to high temperature +90°C [+95°C] ● Low roughness co-efficient
	<p>Middle layer</p> <ul style="list-style-type: none"> ● Material PP-MD ● Reinforcement with minerals ● Colour [cream-white] ● Noise reduction ● High stiffness
	<p>External layer</p> <ul style="list-style-type: none"> ● Material PP ● Colour [blue] ● Impact resistant



Case study
University of Northampton

When the University of Northampton embarked on a multi-million pound project with main contractor Kier Construction, to build a new student accommodation building, it required a plumbing and drainage manufacturer that could provide solutions for a variety of applications. With an extensive product portfolio and an expert technical team, Marley Plumbing and Drainage was ideal for this project.

“We chose Marley’s competitively priced dBlue, HDPE and PVC Soil and Waste products for this project because of their durable, yet lightweight constructions, which ultimately led to easier handling on site and – going forward – the ability to withstand high daily usage”

Bob DeGennaro, Integral.

Advanced Life4 technology on four of the key profiles, coupled with the benefits of the Easyclip and notching capability combine to make the Marley range the most comprehensive available.

Deepflow 110 x 75mm semi-elliptical system

The market leader, the Deepflow semi-elliptical profile produces self cleansing flow resulting in a very high capacity. Deepflow can be installed using a notched or notchless joint.

Downpipe:

68mm 65mm

Colours available:

NEW



Clip-master 112 x 49mm nominal half round system

Clip-master is a practical, easy to install PVCu nominal half round gutter system which is compatible with most other manufacturers' half round systems. Clip-master can be installed using a notched or notchless joint.

Downpipe:

68mm 65mm

Colours available:



Flowline 112 x 60mm rectilinear system

Flowline is an attractive rectilinear profile PVCu gutter system, capable of carrying capacities in excess of standard half round gutters. Flowline is the aesthetic choice for larger roof areas. Flowline can be installed using a notched or notchless joint.

Downpipe:

68mm 65mm

Colours available:

NEW



Deepflow150 155 x 98mm high capacity semi-elliptical system

Deepflow150 is a larger version of the Deepflow profile and is ideal for small to medium commercial projects, flats and industrial applications. Capable of carrying up to 6.0 litres a second. Deepflow150 can be installed using a notched or notchless joint.

Downpipe:

82mm

Colours available:



Classic 116 x 75mm ogee style system

Classic is a bold, highly decorative, Ogee style PVCu gutter system, featuring both internal and external fascia brackets. All Classic fittings are supplied complete with clips and seals. Outlets and unions incorporate screw fixing points to anchor fittings for the control of thermal movement.

Downpipe:

68mm 65mm

Colours available:



KEY

White Black Grey Brown Anthracite Grey **NEW**



Rainwater systems that stay looking better for longer

We're all affected by the steady advance of time, as years of exposure affects how everything looks. To combat this Marley Plumbing & Drainage have advanced their manufacturing process to create Life4.

Looks better...

Life4 rainwater systems can withstand exposure for up to four times longer than standard PVCu rainwater gutters and downpipes and have high gloss levels that are consistent with the fittings, improving the overall aesthetic of the system.

...for longer

Not only do Life4 products look better, they last longer. Life4 products have been exposed to up to four times the European weathering test duration and performed admirably.



Easyclip

Deepflow, Clip-master, Flowline and Deepflow150 rainwater systems benefit from the Marley easyclip, which makes jointing both easy and reliable. The easyclip has twin compression tabs, which apply downward pressure onto the gutter seal, to ensure a watertight joint.

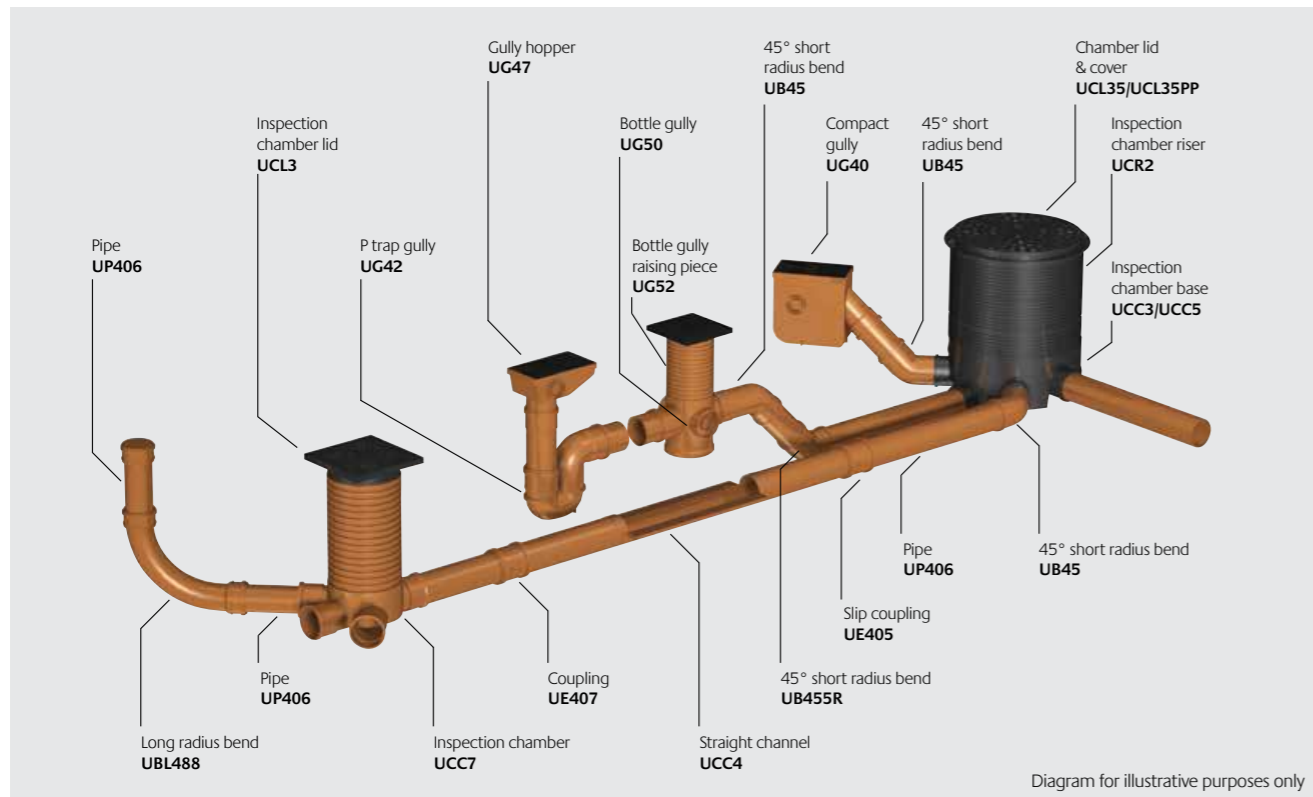
A positive 'click' is made when the gutter is in place. The easyclip also makes life easy if you need to dismantle the joint.



Notch adaptor (RGNA1)

It is possible to adapt the easyclip to make fittings suitable for 'notch' jointing, by fitting a 'notch adaptor' into the centre of the easyclip. The adaptor will then fit into a notch cut into the back of the gutter.

This is an effective way of allowing gutter to expand and contract due to temperature change, without gutter and fitting pulling apart. There is also no need to anchor unions and outlets to the fascia, an ideal solution when using rafter arm brackets.

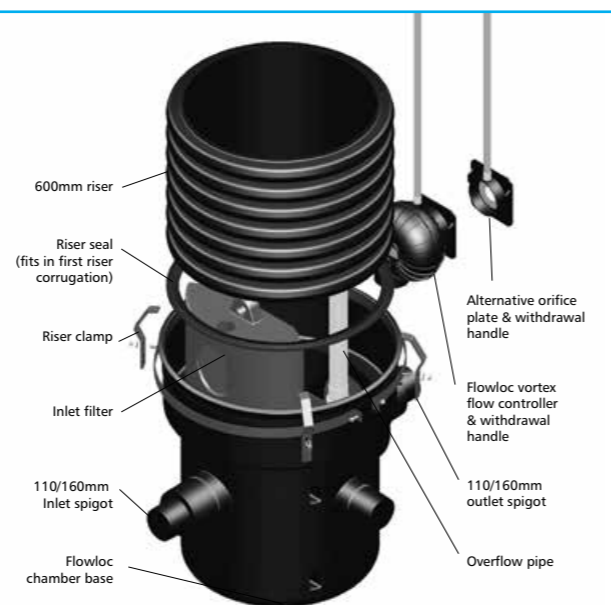


Key features of the Marley solid wall system

- 82mm, 110mm and 160mm diameters
- Private drainage
- Plain ended and socketed pipe
- Adaptors to other materials
- Access fittings
- 250mm and 450mm inspection chambers
- Adjustable and variable bends
- A wide range of gullies
- Manufactured to BS EN 1401
- BBA 88/1977 certification
- A number of solid wall fittings are also suitable for use with 150mm quantum and highway pipes.

flowloc

- Heavy duty aluminium flow controller and coupling system, electro coated for long service life. Available to suit a wide range of flow rates
- Supplied within a chamber base with an integrated filter providing protection against controller blockage
- Suitable for use with tank depths up to 4m
- All components readily removable from surface for ease of maintenance
- The chamber base is also suitable for installation within a conventional man entry inspection chamber if required.



Sewer – PVCu

- 150mm, 225mm and 300mm diameters
- Suitable for adoptable foul and surface water sewers
- Private foul and surface water applications.

Highway – PVCu

- 150mm, 225mm and 300mm diameters
- Highway surface water carrier and filter drains
- Private surface water applications.

Large diameter Quantum Highway – HDPE

- 375mm, 450mm and 600mm diameters.
- Pipes are available in fully slotted, half slotted and solid wall options.
- BBA certificate no.11/H172.



Quantum is manufactured in two grades, sewer and highway, and offers the following benefits over traditional materials

- The flexibility to tolerate ground movement without damage, whilst withstanding the combined effects of backfill and loading
- Fewer joints to reduce the likelihood of leaks and blockages
- A high level of chemical resistance to the wide range of substances found in both effluent and contaminated soils
- A smooth bore gives good hydraulic performance
- A red stripe, printed down the length of the pipe, aids identification of sewer pipe
- BBA 94/2985 certification on Quantum Sewer for private foul and surface water applications
- BBA 09/H146 & BBA 98/3486 certification on Quantum Highway
- WIS 4-35-01 certification on Quantum Sewer for adoptable foul and surface water sewers.

Why choose Multikwik?



Since its inception Multikwik has revolutionised plumbing in the UK, as it was one of the first companies to support the use of plastics in plumbing. The innovative flexible EVA WC connectors were first introduced to the UK by Multikwik and provided plumbers with a product that is easy to install and creates a solution to a long standing plumbing problem.

From this innovation, the Multikwik ethos has grown – in every product manufactured, Multikwik strive for:

- Reliability
- Simplicity
- Speed of installation
- Problem solving features

Four very simple reasons why you can Trust Multikwik



WC Connectors

At Multikwik we take great pride in plumbing and offer innovative products that are capable of giving you that little bit of extra help.

Thanks to the flexible EVA and reliable TPE seals, the Multikwik WC connectors allow for imperfect pipes and spigots, while still ensuring a watertight joint past the point of installation – ideal for tolerating movement and WC load bearing pressures. The seals and multidepth fins give additional peace of mind for a secure seal.



Sanitary Systems

The Multikwik sanitary system includes sanitary frames, concealed cisterns, flush & fill valves and a selection of flush plates – all the hidden things that offer reliability when designing modern washrooms.

Wall hung toilets and basins have many benefits over the traditional close coupled WCs and pedestal basins, including easier cleaning and maintenance, hiding unsightly pipework and providing a contemporary, sleek bathroom finish.



Compression Waste

When designing and building any type of development, we know that costs and aesthetics can play a huge part in making decisions.

That's where Multikwik offers the choice – standard white compression waste components for hidden plumbing, and a chrome covered compression waste system for exposed pipework. Both options have a smooth inner bore, to reduce the chance of blockages and thumb recesses for easy hand tightening.

A 50mm version is also available for commercial applications.



Floor Drainage

Multikwik floor drainage solutions give you the support that you need to succeed on a tough job.

There is a solution for commercial high flow rate applications, domestic unobtrusive shower drainage, tiled and vinyl flooring.



Traps

Designed by our plumbing experts, the Multikwik traps range is a comprehensive suite of products which provide reliable solutions for both typical and more challenging installations.

From standard traps for basins, baths and showers to more complex utility traps and nozzles for appliance connections, the Multikwik range has a product suited to the job.

Bright white, wipe clean finish ensures high quality installation.

Equator hot & cold

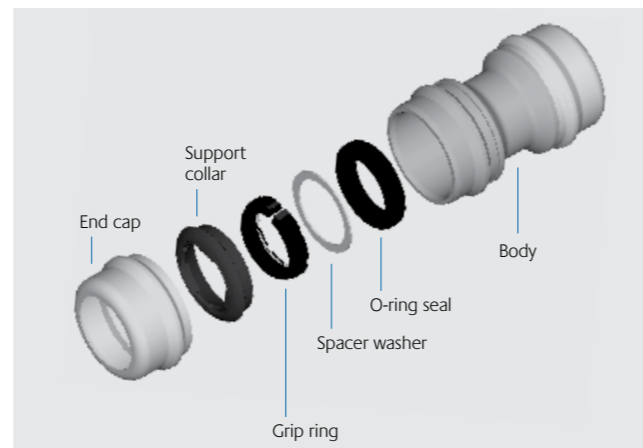


Equator is the culmination of extensive worldwide research into fitting and system design, material composition and performance capabilities. The result is a uniquely designed fitting offering the following benefits:

- Fitting is fully de-mountable and reusable
- Fitting is tamper proof. Only through use of the de-mounting tool can the system be disassembled
- Excellent chemical resistance
- PE-X gives good temperature resistance, more so than many other non-thermosetting plastics used in the building industry
- Long-term durability

Manufactured from cross-linked polyethylene (PE-X) which is a high engineering grade polymer, Equator offers excellent performance capabilities and its benefits, both practical and financial, present a real alternative to copper systems.

Equator has been designed to meet, and in many cases exceed, the requirements of the BS7291: Parts 1 & 3: Class S.



A GUIDE TO Sanitary Pipework Design

This seminar is designed to help further the understanding of key elements of sanitary pipework design.

The key learning aims of the presentation are:

- Background of sanitary standards
- The format of BS EN 12056
- Terminology & system classification
- Calculation of design flow & sizing discharge stacks
- Classification & sizing of air admittance valves

marleypd.co.uk



A GUIDE TO Modern Concealed Sanitary Systems

This seminar is designed to help further in the understanding of the product attributes and applications of sanitary systems.

The key learning aims of the presentation are:

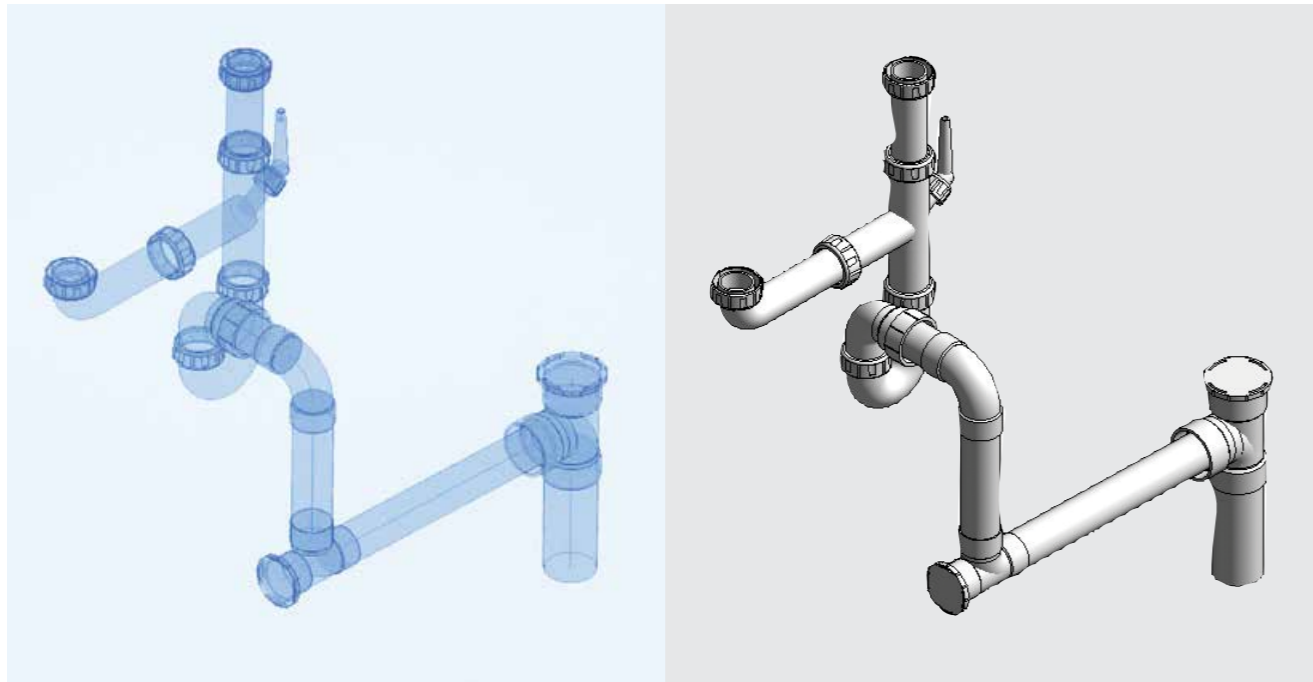
- Benefits of concealed sanitary systems in commercial washrooms and residential bathrooms.
- Design considerations, typical applications & installation details.
- Sanitary frames and cisterns – Product design and technology.
- Industry regulations, sustainability and specification tools.



TRUST MULTIKWIK
MULTIKWIK.COM

If you would like to book one of the above CPDs then please email your details to:

cpd@alixis.co.uk



Using BIM technology at the design stage of a project helps to detect clashes within a building, instead of experiencing them on site. How the sanitary pipework system fits within these constraints can now be tested using the Marley BIM files. The Marley BIM objects have been designed in Revit with all of the latest COBie data and are available to download from: www.marleypd.co.uk or www.bimstore.co.uk/manufacturers/marley-plumbing-and-drainage. BIM expertise is now part of our Technical Services Team.

If you have a question about our BIM objects or have some feedback on our BIM library, simply email: BIM@marleypd.co.uk with your comments.



New Aliaxis fleet of lorries

Aliaxis have invested in a dedicated fleet of more than 30 specialist commercial vehicles to meet with its nationwide operational requirements for its Hunter Plastics, Marley Plumbing & Drainage and Multikwik brands.

Complete with the latest technology, the new transport vehicles are fully in line with strict environmental standards due to the state-of-the-art Euro 6 design.

With the new fleet in place, we now have the vehicles which not only meet the highest safety and environmental standards, but also help us to provide a professional and reliable service for our customers.

The Aliaxis UK Group

A brief overview of our group, and what we offer.

Our brands have strong identities and are firmly established in the markets they serve. Aliaxis is present in over 40 countries, has more than 100 manufacturing and commercial entities and employs over 16,200 people.

We leverage our local and global knowledge of the industry to provide consistently excellent customer service through our distribution partners to building installers, infrastructure contractors and others. Balanced with the strengths, know-how and international reach of the Group, we continue to develop and improve our positions in key building applications throughout the world.



Alutec is the UK leader in innovative aluminium rainwater & eaves solutions.

Head Office:
+44 (0)1234 359 438
www.marleyalutec.co.uk



Manufacturer of high performance, thermoplastic pipework systems.

Head Office:
+44 (0)1543 279 909
www.durapipe.co.uk



A leading manufacturer of high performance piping products for gas, water, sewerage and industrial applications.

Head Office:
+44 (0)1480 52121
www.gpsuk.co.uk



Hunter Plastics produce above & below ground drainage solutions for all applications.

Head Office:
+44 (0)1622 852 654
Scotland:
+44 (0)1698 815231
www.hunterplastics.co.uk



Marley Plumbing & Drainage offer innovative solutions for the construction industry.

Head Office:
+44 (0)1622 858 888
Scotland:
+44 (0)1698 815231
www.marleypd.co.uk



Sanitary solutions to suit any project including traps, WC connectors, frames and more.

Head Office:
+44 (0)1622 852 654
Scotland:
+44 (0)1698 815231
www.multikwik.com



Developers of the first all plastic compression fittings & is now seen as the international benchmark.

Head Office:
+44 (0)1323 847 323
www.philmac.co.uk



marleypd.co.uk

For general enquiries and details of your nearest stockist please call the customer services department:

Tel: 01622 852585

Email: customerservice@marleypd.co.uk

To place an order

For delivery to **England & Wales**

Email: orders.lenham@marleypd.co.uk

Fax: 01622 851111

For delivery to **Scotland**

Email: orders.uddingston@marleypd.co.uk

Fax: 01698 810307

For all estimate requests

Email: estimates@marleypd.co.uk

For Technical advice please call

01622 852695

Head Office

Lenham, Maidstone

Kent ME17 2DE

Tel: 01622 858888

Fax: 01622 858725

Email: marketing@marleypd.co.uk

Scotland

Birkenshaw Industrial Estate

Uddingston, Glasgow G71 5PA

Tel: 01698 815231

Fax: 01698 810307

Export Division

Lenham, Maidstone

Kent ME17 2DE England

Tel: +44 (0)1622 858888

Fax: +44 (0)1622 850778

Email: export@marleypd.co.uk

an *OAliaxis* company