

Inlet valve

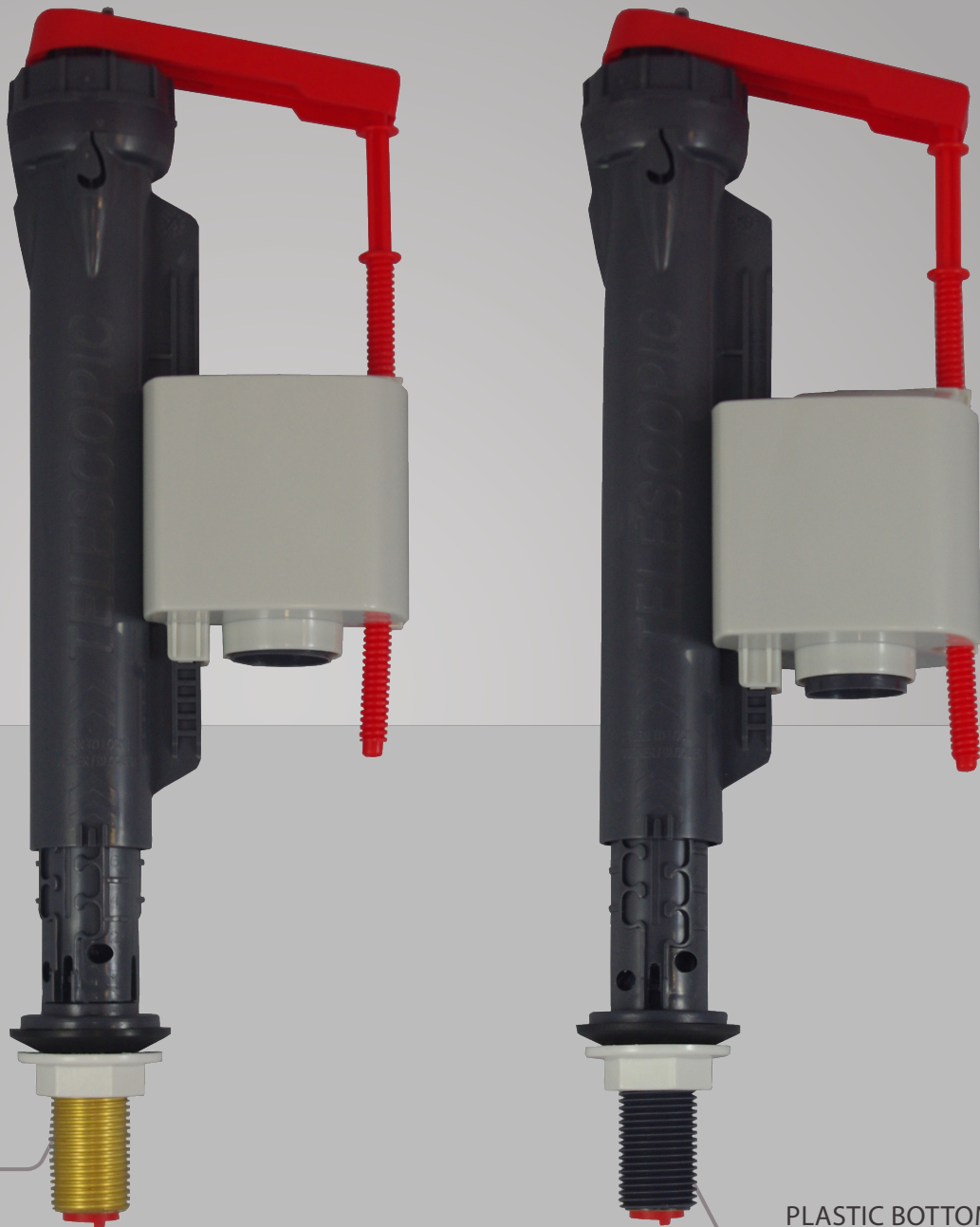
Guarantee
10
years

WIRQUIN
INNOVATION

WRAS
APPROVED PRODUCT

JOLLYFILL

TELESCOPIC BOTTOM ENTRY



BRASS BOTTOM

PLASTIC BOTTOM

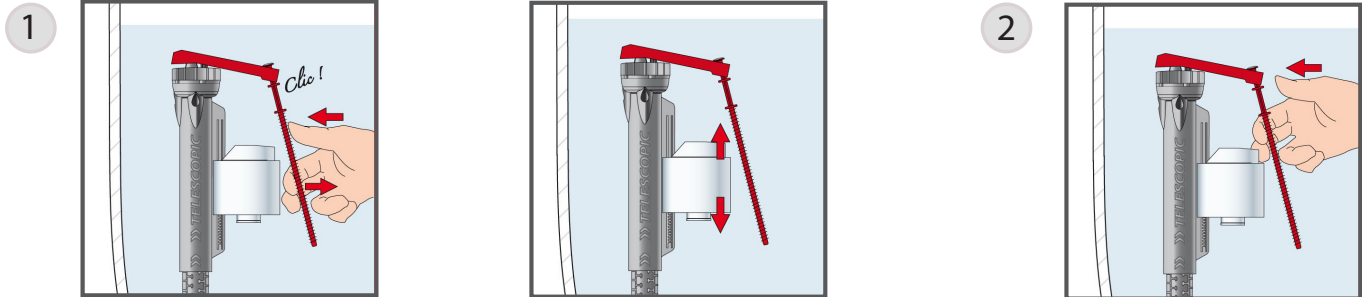
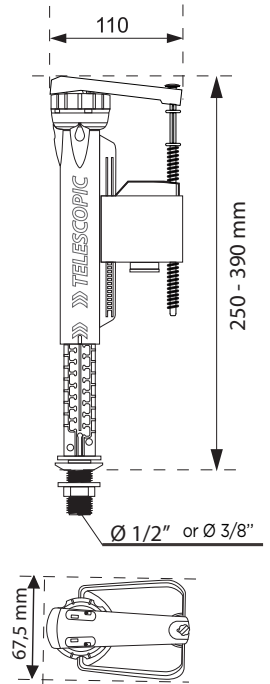
- > Water saving delayed action
- > Patented clutch system
- > Working pressure 0.1 to 16 bar
- > Quick and easy to install and maintain
- > Fast filling and ultra quiet shut off (only 17db)

Macdee
wirquin

SANITARY EQUIPMENT SPECIALIST

TECHNICAL CHARACTERISTICS

| | |
|------------------------------|---|
| HEIGHT ADJUSTABLE PEDESTAL | 8" - 13" (200mm - 325mm) |
| WORKING PRESSURES | 0.1 - 16 bar - resistant to peaks of pressure of up to 20 bar |
| WATER SUPPLY CONNECTION | 1/2" brass or plastic 3/8" brass |
| TECHNOLOGY | Part 4 inlet valve |
| WATER SAVING | Delayed action |
| WATER LEVEL ADJUSTMENT RANGE | 135 - 315 mm = 180 mm |
| OVERALL DIMENSIONS, FITTED | 250 to 390 x 110 x 67.5 mm |
| INNOVATION | Unique clutch system to prevent breakage if overtightened |
| SERVICING | Maintenance possible while insitu |
| PREVENTS BACK SIPHONING | Yes |
| PREVENTS WATER HAMMER | Yes |
| CONTAINS RESTRICTOR | Yes |
| GUARANTEE | 10-years |



- 1 Set the float/cup to the water line inside cistern
- 2 Clip rod into float and cup

| DESCRIPTION | 1/2" BRASS | | 1/2" PLASTIC | | 3/8" BRASS |
|----------------|---------------|---------------|---------------|---------------|---------------|
| REFERENCE | 16110201 | 10120029 | 16110101 | 10120028 | 16110011 |
| CODE EAN | 3375537150434 | 5017134129434 | 3375537151691 | 5017134129311 | 3375537150441 |
| PACKAGING | BAG | BOX | BAG | BOX | BAG |
| MULTIPLE / BOX | 01/36 | 01/24 | 01/36 | 01/24 | 01/36 |