

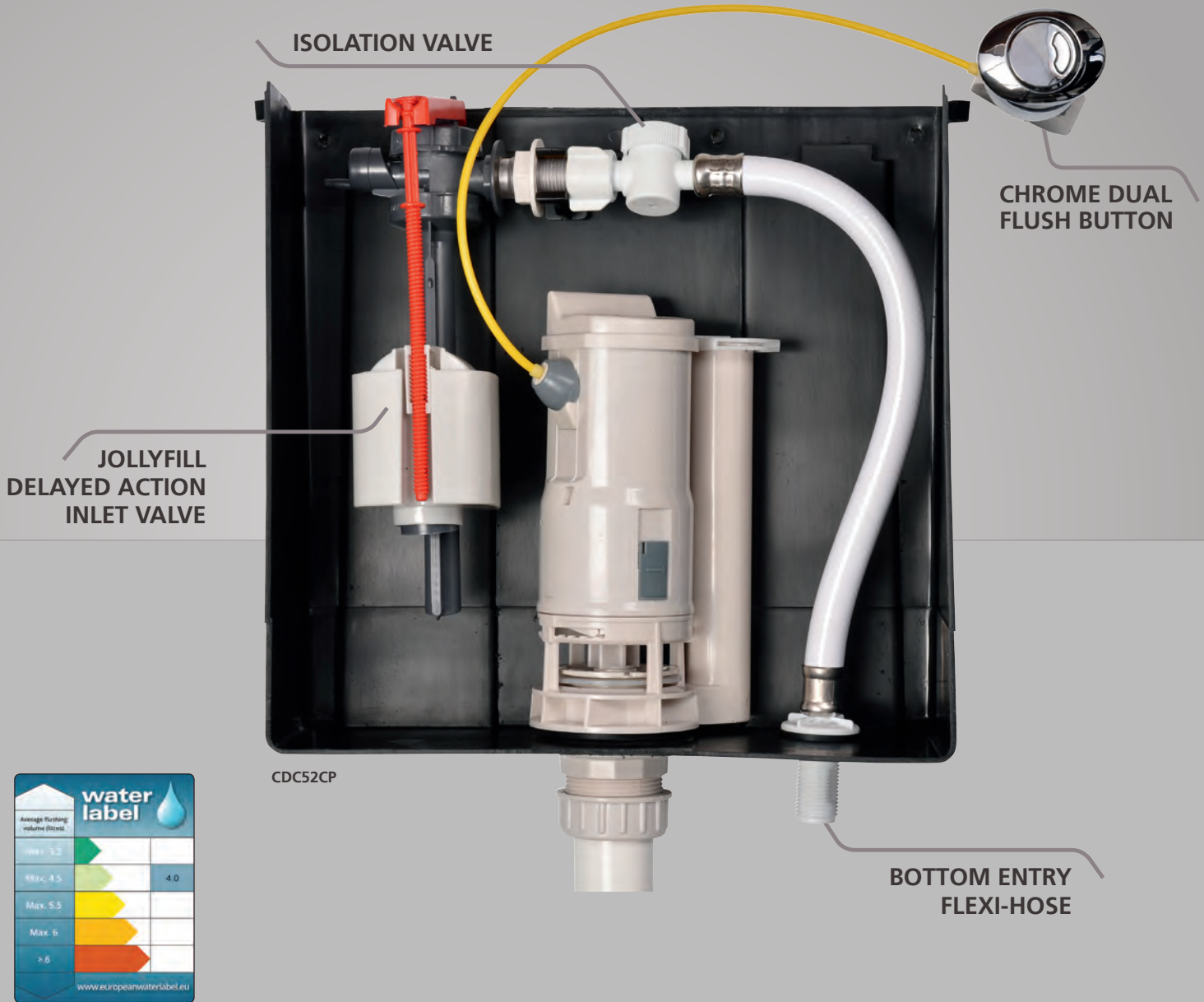
Concealed Cistern

Guarantee **
10
years



DUO COMPACT

Concealed Cistern



- > 1½" or 2" Kayla cable flush valve options
- > Jollyfill water saving delayed action plastic inlet valve
- > Assembled/Unassembled
- > Water saving dual flush
6/4 litre or 4/2.6 litre

*Wrass approved fittings

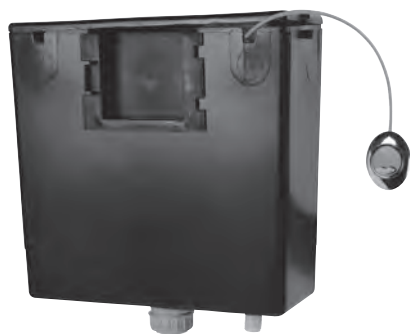
Macdee
wirquin

SANITARY EQUIPMENT SPECIALIST

TECHNICAL CHARACTERISTICS

DIMENSIONS	W - 336mm H - 320mm D - 140mm
INSTALLATION	Ideal for bathroom furniture and in-wall applications
MAINTENANCE	Assembled-front and top access for easy maintenance Unassembled-top access only
MATERIAL	Robust plastic
OVERFLOW	Internal
CONTENTS	Cistern body + lid Kayla flushing valve Jollyfill delayed action inlet valve Chrome push button John Guest speedfit isolation valve (assembled only) Flush pipe
OPTIONAL EXTRAS	Optional front access chrome finish fascia plate available (CDF01CP)

> ASSEMBLED CISTERN



> OPTIONAL FRONT ACCESS CHROME FASCIA PLATE



> UNASSEMBLED CISTERN



PRODUCT SPECIFICATIONS



> **COMPACT DESIGN:** The Duo Compact cistern is the most compact concealed cistern on the market. Fits in to 400mm furniture.



> **WATER SAVING:** The Jollyfill delayed action inlet valve allows end users to save water.



> **SECURE:** Lid fixing screws are supplied for additional security.



> **CONCEALED CISTERN :** Ideal for both bathroom furniture and in-wall applications.



> **GUARANTEE :** A 10 years guarantee on the Jollyfill inlet valve and a 1 year guarantee on the Kayla flushing valve.



> **COMPLETE KIT :** Comes complete with flushing valve, side inlet valve and chrome push button.

DESCRIPTION	ASSEMBLED 1 1/2" DUO COMPACT BOTTOM ENTRY	ASSEMBLED 2" DUO COMPACT BOTTOM ENTRY	UNASSEMBLED 1 1/2" DUO COMPACT SIDE ENTRY	UNASSEMBLED 2" DUO COMPACT SIDE ENTRY
REFERENCE	CDC52CP	CDC53CP	CDC40CP	CDC41CP
CODE EAN	5017134120456	5017134117537	5017134119817	5017134119824
PACKAGING	BOX	BOX	BOX	BOX
PALLET	01/54	01/54	01/54	01/54