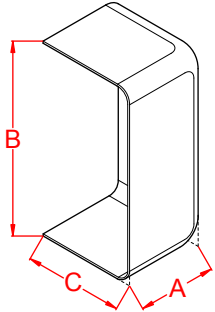
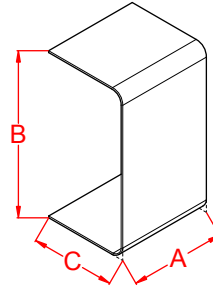


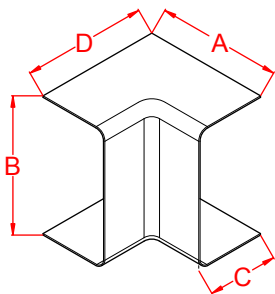
15 mm Double Pipe Cover Accessories



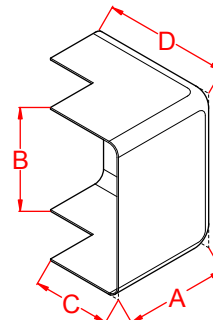
Code:
AD15SE (15 mm)
Stop End
DIM A = 25 mm
DIM B = 60.5 mm
DIM C = 34 mm



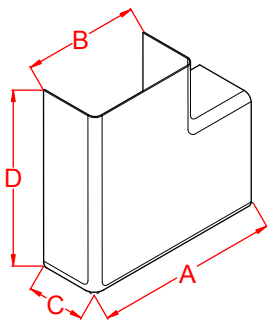
Code:
AD15SC (15 mm)
Straight connector
DIM A = 40 mm
DIM B = 60.5 mm
DIM C = 34 mm



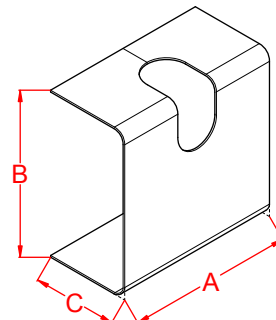
Code:
AD15IC (15 mm)
Inner Corner
DIM A = 54 mm
DIM B = 60.5 mm
DIM C = 34 mm
DIM D = 54 mm



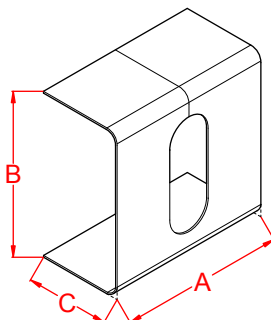
Code:
AD15OC (15 mm)
Outer Corner
DIM A = 54 mm
DIM B = 60.5 mm
DIM C = 34 mm
DIM D = 54 mm



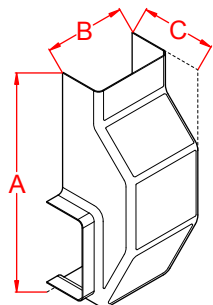
Code:
AD15FC (15 mm)
Flat Corner
DIM A = 80 mm
DIM B = 60.5 mm
DIM C = 34 mm
DIM D = 80 mm



Code:
AD15TA (15 mm)
Top Access
DIM A = 50 mm
DIM B = 60.5 mm
DIM C = 34 mm

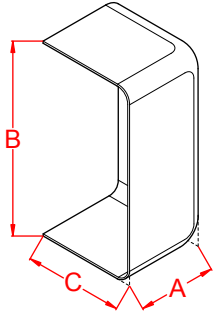


Code:
AD15SA (15 mm)
Side Access
DIM A = 50 mm
DIM B = 60.5 mm
DIM C = 34 mm



Code:
AD15CT (15 mm)
Crossover T
Connector
DIM A = 135 mm
DIM B = 60.5 mm
DIM C = 63 mm

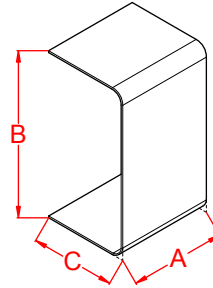
22 mm Double Pipe Cover Accessories



Code:
AD22SE (22 mm)

Stop End

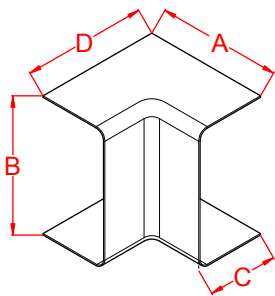
DIM A = 30 mm
DIM B = 82 mm
DIM C = 41 mm



Code:
AD22SC (22 mm)

Straight connector

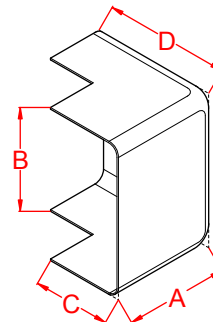
DIM A = 40 mm
DIM B = 82 mm
DIM C = 41 mm



Code:
AD22IC (22 mm)

Inner Corner

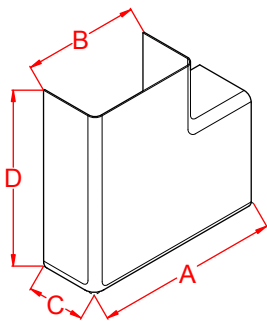
DIM A = 67 mm
DIM B = 82 mm
DIM C = 41 mm
DIM D = 67 mm



Code:
AD22OC (22 mm)

Outer Corner

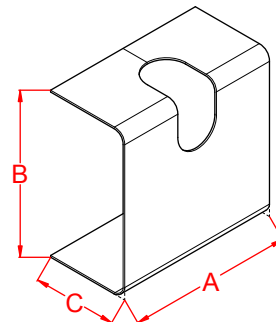
DIM A = 67 mm
DIM B = 82 mm
DIM C = 41 mm
DIM D = 67 mm



Code:
AD22FC (22 mm)

Flat Corner

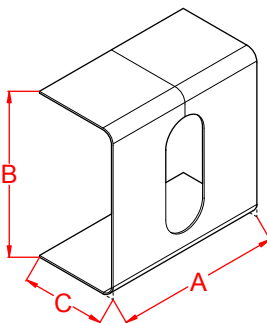
DIM A = 106 mm
DIM B = 82 mm
DIM C = 41 mm
DIM D = 106 mm



Code:
AD22TA (22 mm)

Top Access

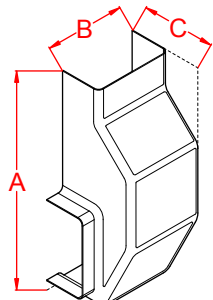
DIM A = 60 mm
DIM B = 82 mm
DIM C = 41 mm



Code:
AD22SA (22 mm)

Side Access

DIM A = 60 mm
DIM B = 82 mm
DIM C = 41 mm

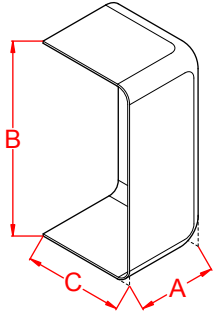


Code:
AD22CT (22 mm)

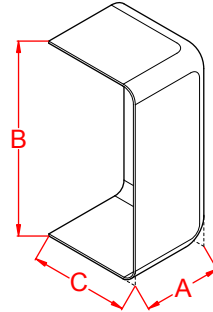
Crossover T
Connector

DIM A = 165 mm
DIM B = 82 mm
DIM C = 73 mm

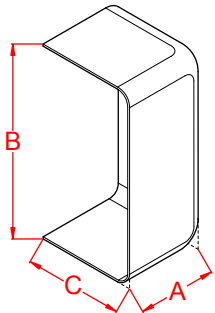
New Pipe Cover Accessories



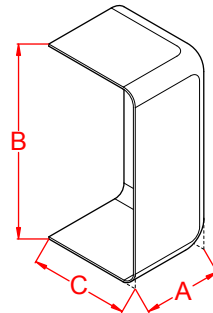
Code:
AS15SE (15 mm)
Stop End
(single cover)
DIM A = 24.8 mm
DIM B = 37.8 mm
DIM C = 34.3 mm



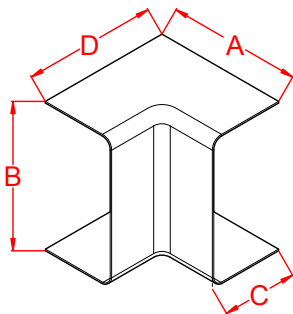
Code:
AS22SE (22 mm)
Stop End
(single cover)
DIM A = 30 mm
DIM B = 48.4 mm
DIM C = 41.8 mm



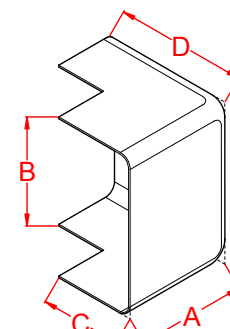
Code:
AS28SE (28 mm)
Stop End
(Single Cover)
DIM A = 30 mm
DIM B = 56.4 mm
DIM C = 49.6 mm



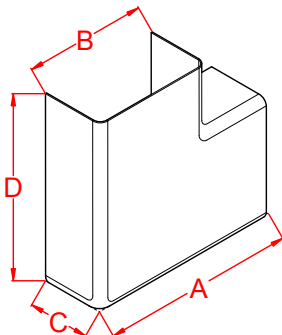
Code:
AD10SE (10 mm)
Stop End
(Double Cover)
DIM A = 20 mm
DIM B = 49.2 mm
DIM C = 26.5 mm



Code:
AD10IC (10 mm)
Inner Corner (double)
DIM A = 43 mm
DIM B = 49.2 mm
DIM C = 26.5 mm
DIM D = 43 mm

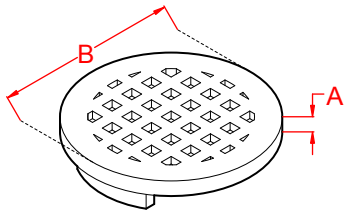


Code:
AD10OC (10 mm)
Outer Corner (double)
DIM A = 43 mm
DIM B = 49.2 mm
DIM C = 26.5 mm
DIM D = 43 mm

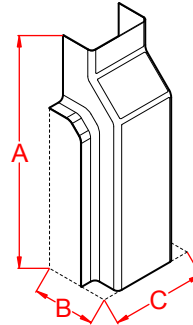


Code:
AD10FC (10 mm)
Flat Corner (double)
DIM A = 65.7 mm
DIM B = 49.2 mm
DIM C = 26.5 mm
DIM D = 65.7 mm

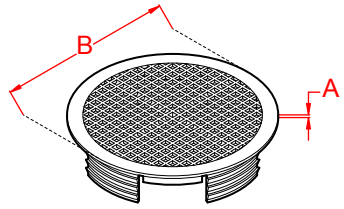
Additional Pipe Cover Accessories



Code:
AVP20
20 mm Vent Plug
DIM A = 2 mm
DIM B = 23.5 mm
Drill hole size = 20 mm



Code:
AK105T15 (15mm)
AK185T15 (15mm)
Skirting Cover T Connector
DIM A = 150 / 230 mm
DIM B = 62 mm
DIM C = 85 mm



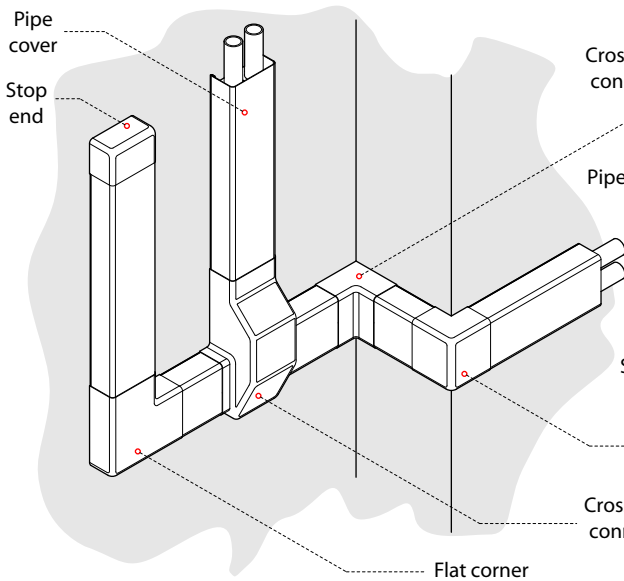
See page 7 for details

Code:
AVP70
70 mm Vent Plug
DIM A = 1.75 mm
DIM B = 80 mm
Drill hole size = 70 mm

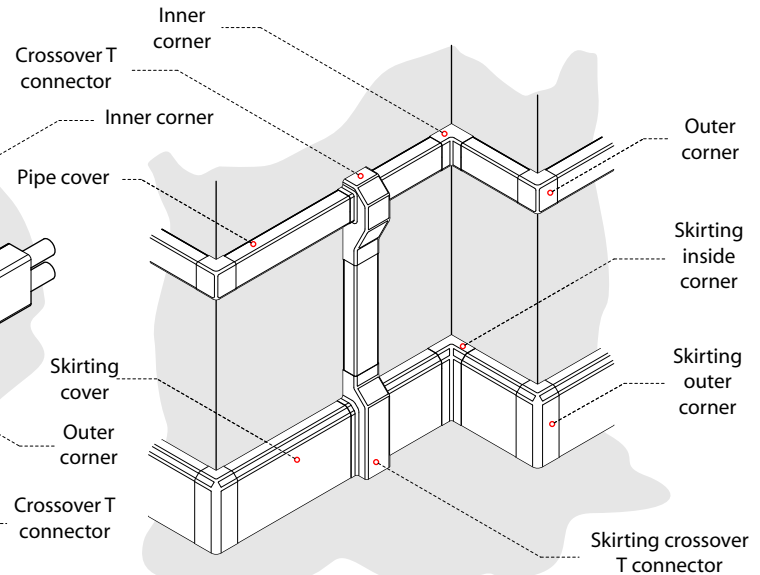


Code:
T-Clean
T-Clean uPVC cleaner for all Talon cover types
Contents: 500 ml

Pipe cover wall assembly example



Pipe cover to skirting cover assembly example



Pipe cover accessories combine in a variety of ways to cover installation work. Accessories are easy fit with Talon T-Weld adhesive. Skirting crossover T allows direct connection to Talon skirting cover.