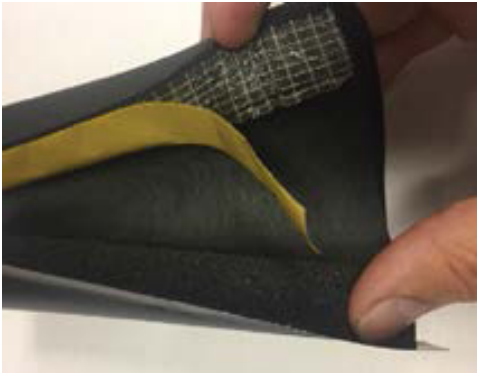


Pre-Slit Weatherproof Insulation



Install +



Pre-Slit Weatherproof Insulation

Our new pre-slit PVC coated insulation provides outstanding protection against freezing, for external boiler condensate pipework. This new design offers a quick and secure 'tape free' installation, with its peel and seal join and its self-adhesive wrap over flap. Fully compliant with the Boiler Installation Standards BS6798:2014, the tough PVC coating is both weatherproof and UV stable.

This insulation is also ideal for use on air source heat pumps or biomass flow and return pipework, to avoid heat loss and meet MIS3005 requirements. To prevent cold bridging use it in conjunction with our Through Wall Sleeve Kit, TW-KIT, to ensure the pipework is fully insulated all the way into the property. Visit our You Tube site for a full installation demonstration: www.youtube.com/user/pumphousepumps

Features

- Avoids heat loss and improves efficiency of the installed air source heat pump
- 19mm wall insulation with a tough PVC coating
- Suitable for 28mm / 32mm pipework

The Package

- 1 x straight 2000mm length of pre-slit 35mm or 28mm ID insulation

Step One



Open the pre-slit insulation

Step Two



Wrap around the pipe, peel away yellow cover and seal together. Use the adhesive flap to secure.

Step Three



Condensate pipework is now fully protected with NEW pre-slit weatherproof insulation



Meets
BS 6798:2014
Boiler Installation
requirements

Part Code	Description
FH-I-1000-35-SLIT	2 metre length of 35mm ID insulation with 19mm wall thickness insulation pre slit seal
FH-I-1000-28-SLIT	2 metre length of 28mm ID insulation with 19mm wall thickness insulation pre slit seal

The Pump House sales team are available to answer your questions or queries on this product. Our experts are waiting for your call **+44 (0)115 900 5858** or if you prefer send an email to sales@pumph.co.uk or visit www.pumph.co.uk

