

# SALUS<sup>®</sup> CONTROLS

Model: RT310 (Wired thermostat)  
RT310TX (RF Thermostat)  
RT310RF (RF Thermostat and Receiver)



## Quick Guide Installation

### RT310 & RT310RF Quick Guide

**Introduction**  
The RT310 thermostat will switch your heating system on or off, as needed, in accordance with the temperature set by you. The RT310 series includes the following products:

- RT310 for wired applications
- RT310RF (RT310TX + RXRT510) for wireless applications
- RT310TX for wireless application, using 5 x 5 receiver
- RXRT510 for wireless application using 5 x 5 transmitter

**Go to [www.salus-manuals.com](http://www.salus-manuals.com) for the full PDF version of the manual.**

**Product Compliance**  
EU Directives: 2014/30/EU, 2014/35/EU, 2014/53/EU and 2011/65/EU. Please check [www.saluslegal.com](http://www.saluslegal.com) for the full information.

**Safety Information**  
Use in accordance with the EU and national regulations. For indoor use only. Keep your device completely dry. This product must be installed by a competent person and in accordance with all the EU and national regulations.

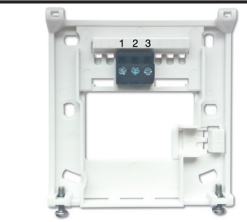
 Always isolate the AC Mains supply before installing or working on any components that require 230 VAC 50Hz supply.

### Installation

#### RT310 Thermostat

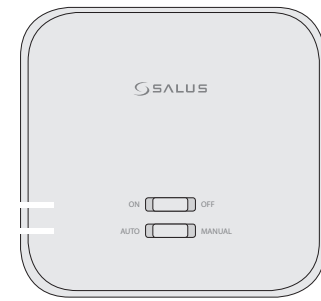


Insert the batteries and wire up the device.

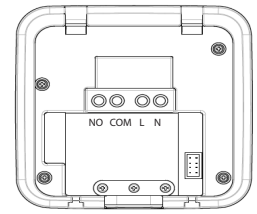
Terminal	Description	Backplate
1 (COM)	Common Terminal	
2 (NC)	Switched Live OFF	
3 (NO)	Switched Live ON	

#### RT310RF (RT310TX+RXRT510) Thermostat and Receiver

For the RT310RF pack, the thermostat and the receiver are already paired. 



Insert the batteries and wire up the receiver. After that please switch the receiver ON.








Terminal	Description	Receiver Terminals
NO	Switch Terminal	
COM	Common Switch Terminal	
L	Mains Live (230VAC)	
N	Mains Neutral	

### DIP Switch Settings

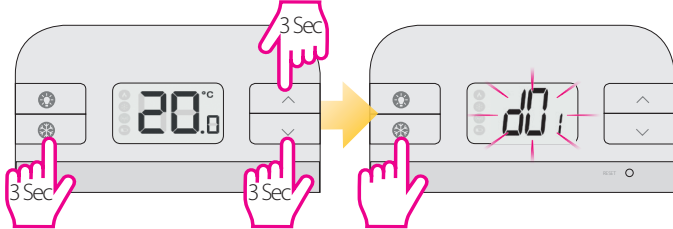
The DIP switches are found on the rear of your thermostat and can be used to change the span (temperature accuracy) of your thermostat from the default +/-0.5°C to +/-0.25°C. This may cause your boiler to operate more frequently. The DIP switches are located on the back of the thermostat. ON +/-0.25°C, OFF +/-0.5°C.



### Button functions for the thermostat

Key	Function				
	Turn on the LCD backlight				
	Turn On/Off the Frost Mode				
	Increase button				
	Decrease button				
	<table border="1"> <tr> <td>RT310TX</td> <td>1. Press once to enter/exit in RF Test Mode</td> </tr> <tr> <td>RT310</td> <td>2. Press for 3 seconds to enter/exit Pairing Mode</td> </tr> </table>	RT310TX	1. Press once to enter/exit in RF Test Mode	RT310	2. Press for 3 seconds to enter/exit Pairing Mode
RT310TX	1. Press once to enter/exit in RF Test Mode				
RT310	2. Press for 3 seconds to enter/exit Pairing Mode				
	Press once to return to Factory Settings				
 + ^+ v	Press for 3 sec all the buttons to enter Installer Mode				


### Installer Mode



Press the three buttons together for 3 seconds.

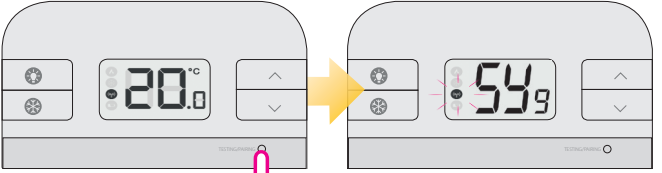
dxx	Function	Parameter	Description	Default value
d01	Temperature display increments	0.1°C or 0.5°C	Select the temperature display increments	0.5°C
d02	Temperature offset	+/-3.0°C	Calibrate your thermostat temperature	0.0°C
d03	Frost setpoint	5.0°C-17.0°C	Set the Frost Point temperature	5.0°C


**Pairing the RT310TX with the Receiver**

If you are using the RT310RF pack, the pairing between the thermostat and the receiver is already done. 

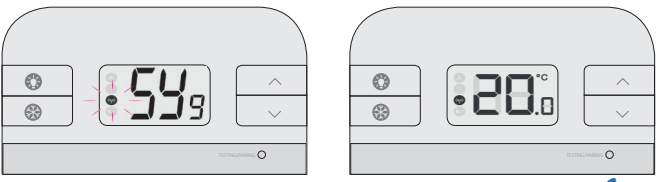
If you bought the RT310TX and RXRT510 seperately then pair as follows. Please make sure that the Receiver is set on Auto.

**Begin the pairing process**

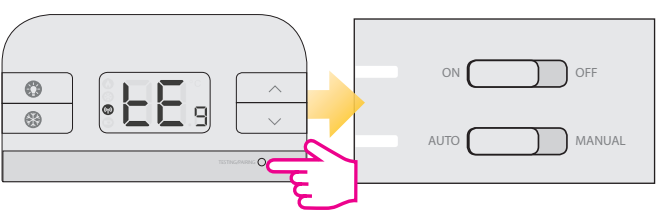
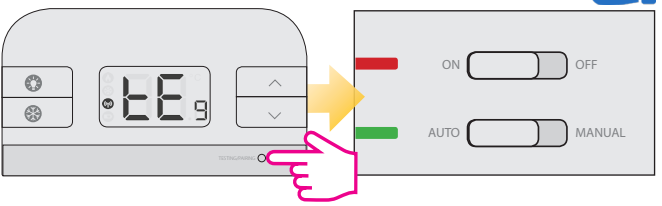


Wait 9 minutes for the timeout process to be complete. 

**End the pairing process**



**Test the pairing process** 



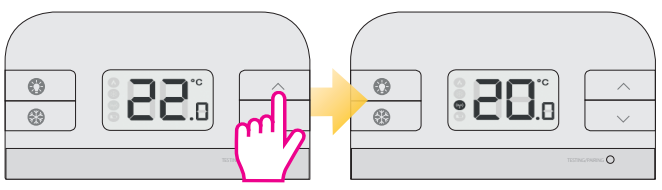
If you bought an RXRT510 or RT310TX and intend pairing with other devices in the 5x5 range, please refer to the Receiver Units manual, or the relevant manuals available at [www.salus-controls.com](http://www.salus-controls.com)

**AUTO** - System receiver output will switch on and off in relation to the command from the RT510 transmitter.

**Manual** - System receiver output is controlled by the top slide switch.

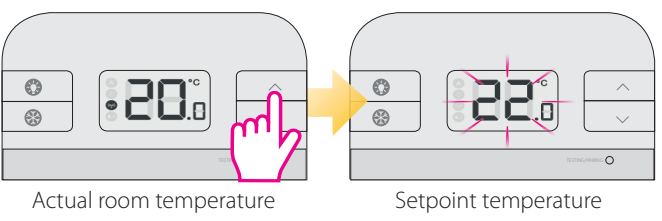
**ON** - When in Manual Mode, ON will turn on the boiler.  
**OFF** - When in Manual Mode, OFF will turn off the boiler

**Review the Setpoint temperature**



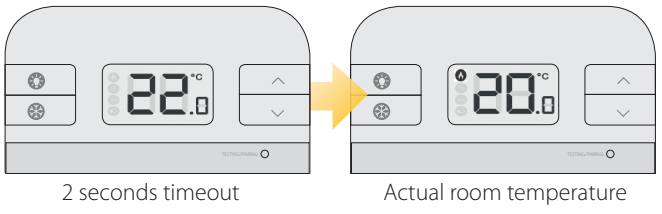
**Change the Setpoint temperature**

**Note:** By changing the Setpoint (desired) temperature, you are permanently altering your temperature.



Actual room temperature

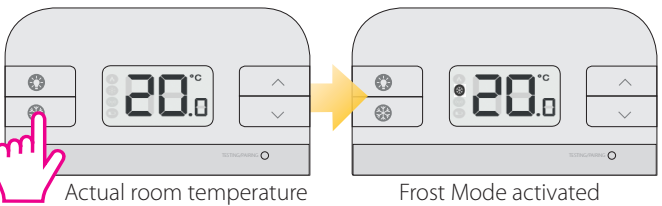
Setpoint temperature



2 seconds timeout

Actual room temperature

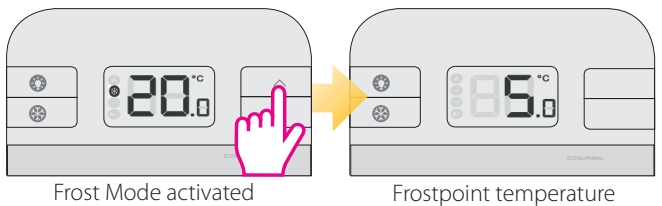
**Frost Protection - ON**



Actual room temperature

Frost Mode activated

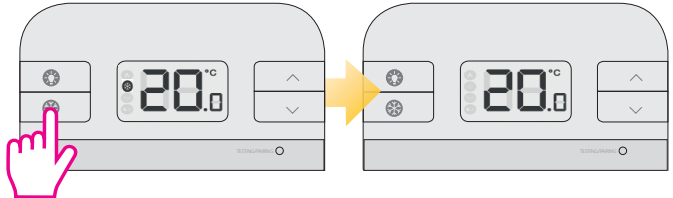
**Note:** The Frostpoint temperature can be reviewed by pressing the Up button once, but can only be changed in Installer Mode.



Frost Mode activated

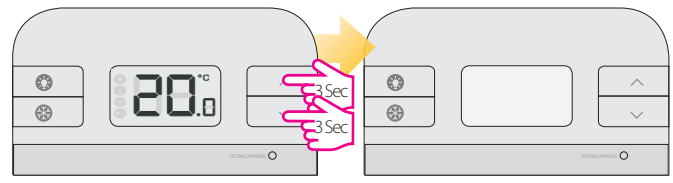
Frostpoint temperature

**Frost Protection - OFF**

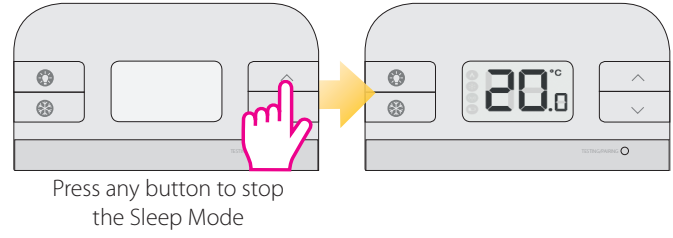


**Sleep Mode - ON**

**Note:** When Sleep Mode is active all the thermostat functions will be paused.

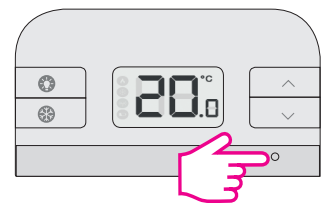


**Sleep Mode - OFF**



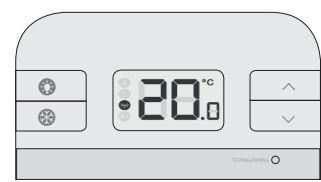
Press any button to stop the Sleep Mode

**Factory Reset RT310**



Press the Reset button once. You can use a paper clip. Your thermostat will be reset and will start up automatically.

**Factory Reset RT310TX**



Remove the batteries without pressing any button. Wait 2 minutes and insert the batteries again. Your device will be restarted.

When you want to change the batteries your device will use the internal memory to backup your settings. You have 30 seconds to change the batteries before losing your settings.