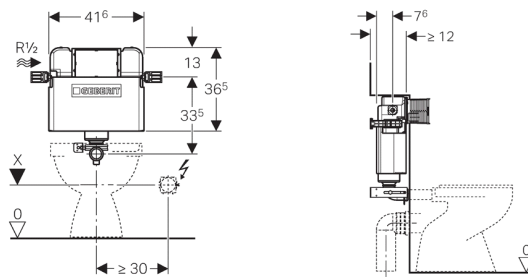


**Geberit Kappa concealed cistern 15 cm, 6 / 3 litres, installation height 82 cm**

**Application purpose**

- For drywall construction
- For installation in part- or room-height prewall installations
- For installation in room-height installation walls
- For floor-standing WCs
- For dual flush

**Characteristics**

- Adjustable in depth
- Concealed cistern with front actuation, fully insulated against condensation
- Cistern fulfils standard requirements in accordance with EN 14055, Class II
- Immediate post flush possible with factory setting
- Welded flush bend
- Water supply connection, left
- Connection hose on angle stop valve can be attached without tools
- Protection cover box for service opening protects against moisture and dirt
- Protection box for service opening can be cut to length without tools

**Technical data**

Flow pressure	0.1-10 bar
Maximum operating temperature, water	25 °C
Flush volume, factory setting	5.8 and 3 l
Flush volume small, adjustment range	3-4 l

**Scope of delivery**

- Water supply connection R 1/2, compatible with MeplaFix, with integrated angle stop valve and hand wheel
- Protection box for service opening
- Protection plug
- 2 fixing brackets
- Fastening material

**Article**
**Art. no.**
**109.205.00.1**

- To reduce flush volume to either 4.5/3 l dual flush or 4/2.6 l dual flush requires material number 242.310.00.1 (note: must be used with pans designed for low volume flush)