

Air Admittance Valves BS EN 12380:2002

Certification and Standards

- Product is A1 approved in accordance with BS EN 12380 it can be installed below the flood level of connected appliances.
- Tested and approved for use in installations varying between -20° & +60°c (no insulation required).
- CE marked to level 4 attestation of conformity in accordance with BS EN 12380.
- **FloPlast** air admittance valves are kitemark licenced in accordance with BS EN 12380:2002 licence number KM 512474.

General Information

The **FloPlast** Air Admittance Valve is designed to allow the free entry of air into the sanitary pipework system without the escape of foul gasses into the building.

When installed into sanitary pipework systems conforming to BS EN 12056:2000, the **FloPlast** Air Admittance Valve not only prevents the loss of water from trap seals due to induced siphonage, but also has the added advantage of providing an early warning indicator to a potential drainage blockage. The AF110 Push-fit Air Admittance Valve may also be used as a secondary rodding point to remove such blockages.

All Valves should be stored/installed in an upright position.

The AF32 Air Admittance Valve has a universal adaptor to fit to 32mm/40mm/50mm Solvent Waste Pipe. It is produced from white ABS/PVC, and is designed for use with waste pipe conforming to British/European standards connected to a solvent cemented pipe adaptor supplied with the product.

Approved Document H of the Building Regulations only permits Air Admittance Valves that conform to BS EN 12380:2002.

Ventilation and access must be provided to all air admittance valve installations.



Further information on **FloPlast** Air Admittance Valves is available from the BSI detailed sheet which is downloadable from our website:
www.floplast.co.uk



AX110

External Air Admittance Valve Push-fit

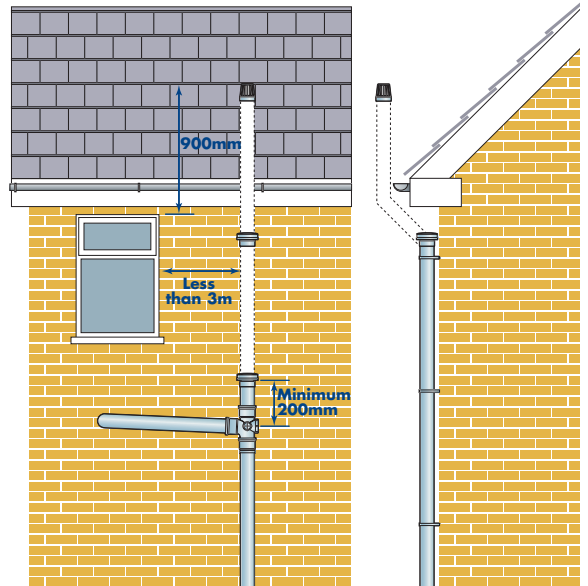


CODE
AX110
Push-fit/Solvent

COLOUR
Grey/Black/White

SIZE
110mm/82mm

Document H Clause 1.31 states that "Ventilating pipes open to outside air should finish at least 900mm above any opening into the building within 3 metres". This new development by **FloPlast**, of an External Air Admittance Valve, will allow the installation of an external soil pipe within 3 metres of any opening and terminate at the same height as if it were installed internally, i.e. 200mm (minimum) above the highest wet entry point to the soil vent pipe. See diagram below.



White Black Grey



AV32



AF32



AV110



AF110

Air Admittance Valve Compression



CODE	SIZE
AV32	32mm
White	
AV40	40mm
White	
AV50	50mm
White	



CODE	SIZE
AF32	32/40/50mm
White	
(Universal adaptor to fit 32mm/40mm/50mm Solvent Waste Pipe)	



CODE	SIZE
AV110	110mm
(Solvent)	
Grey/Black/White	

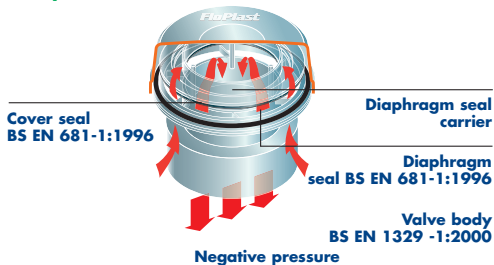


CODE	SIZE
AF110	110mm
(Push-Fit)	
Grey/Black/White	

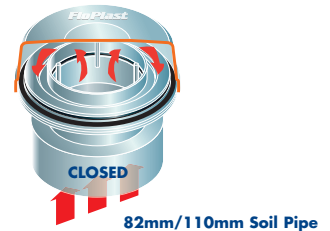
For 82mm solvent connection, remove seal from 110mm push-fit.

This product is not CE marked under the Construction Products Regulations 2011

Valve Open (Negative pressure in pipework)

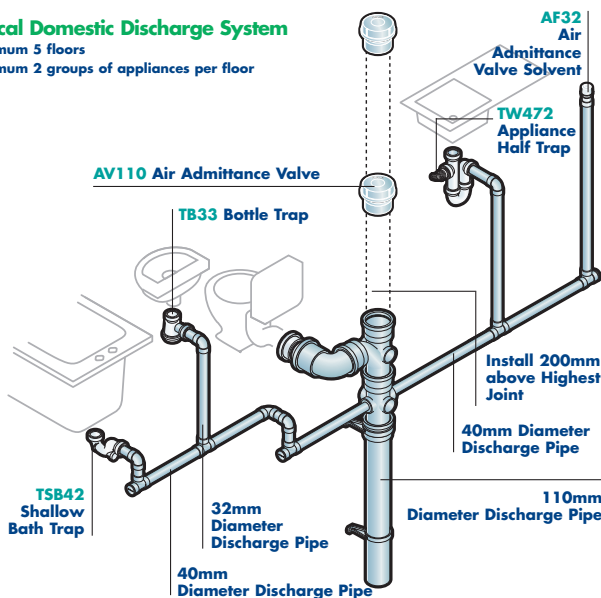


Valve Closed (Normal working conditions)



Typical Domestic Discharge System

Maximum 5 floors
Maximum 2 groups of appliances per floor



Advantages and Benefits

- Saves the need to penetrate the outer roof shell, giving more aesthetic roof lines.
- Saves on the cost of pipes and expensive fittings.
- Saves on roof flashing.
- Saves on labour costs.
- Prevents the loss of water from trap seals and consequent release of foul air into the building.
- Secondary rodding point.