



Soil & Waste

Product Specifications



Innovation & Expertise

Marley Soil & Waste systems

Marley Plumbing & Drainage offer a comprehensive range of soil and waste systems. Available with a variety of jointing methods, Marley products are manufactured to exacting UK and European standards and are designed for use on commercial projects as well as housing developments.

PVCu soil & waste systems are available with push-fit or solvent weld joints, offering a choice of installation methods. The Marley Akatherm HDPE drainage range is a suitable replacement for cast iron; it is lightweight yet durable. For improved levels of soundproofing, the Marley dBlue acoustic soil & waste system is ideal.

Product specification information

This guide contains product specification information for the Marley PVCu soil & waste, Marley Akatherm HDPE drainage and dBlue acoustic soil product ranges. A design and installation guide is available as a separate document. All documentation is available to download from marleypd.co.uk

Production information

Information on the complete range of Marley Plumbing and Drainage system solutions is available to download from marleypd.co.uk or available via the literature hotline 01622 852585.



BS EN ISO 9001:2008
BS EN ISO 14001:2004

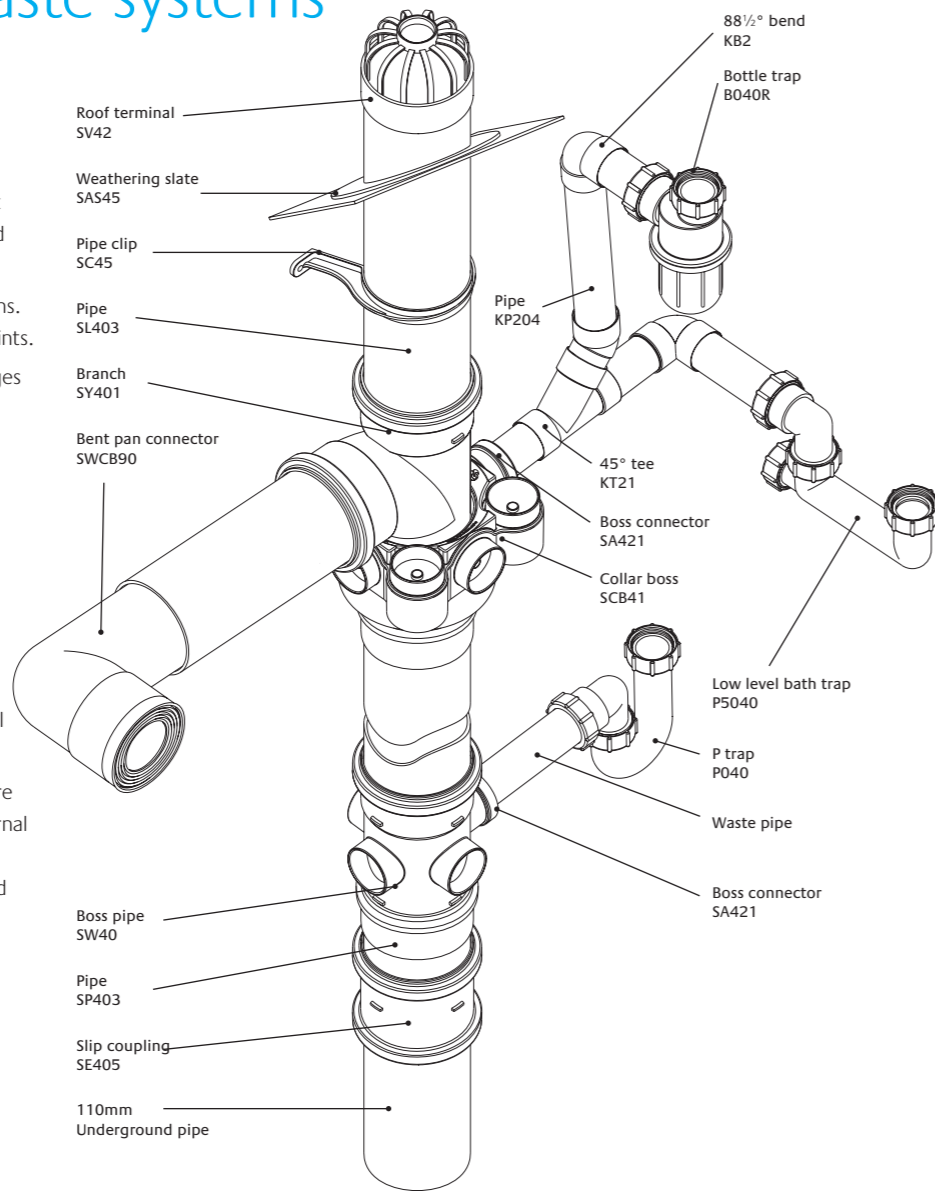
Contents

4 PVCu Soil & Waste systems	41 WC connectors
5 Commercial applications	42 Universal push-fit WC connectors
Waste	
6 Solvent waste PVCu	43 WC manifold system
8 Solvent waste ABS	44 Fire protection
10 Push-fit waste polypropylene	45 Pipe support systems
12 PVCu condense and overflow system	45 Ancillary items
Soil	
14 Push-fit soil, PVCu	46 British & European standards
20 Solvent soil, PVCu	47 Marley system solutions
25 Accessories	
26 HDPE drainage	
38 dBlue acoustic drainage	



PVCu soil & waste systems

- 82, 110 and 160mm push-fit and solvent weld soil systems incorporating socketed and plain ended pipe
- 110mm WC connectors for all BS WC pans. Available with solvent weld or push-fit joints.
- 110mm WC manifold system allows ranges of toilets to be connected horizontally. Ideal for commercial applications.
- 50 and 82mm floor outlet components are available as separate components or as an all in one trapped floor outlet.
- Fire sleeves and pipe wraps, providing up to 4 hours rating.
- 110 and 160mm pipe support components designed specifically to meet the needs of supporting horizontal or vertical suspended PVCu pipework.
- 82, 110 and 160mm pipes and fittings are also suitable for use as internal and external rainwater pipes to drain flat roofs and metal gutter systems on commercial and industrial buildings.



Commercial applications

Marley Akatherm HDPE

The Marley Akatherm HDPE drainage range is certified to BS EN 1519: 2000 (licence number KM 545820) An extension of the Marley soil & waste portfolio, the HDPE range offers an alternative solution to cast iron.

It is particularly suited for commercial applications or where a product with high impact or abrasion resistance is required, such as hospitals, hotels, schools, as well as residential buildings. HDPE will also cope with temperature variations of -40°C to 100°C.

The combination of the excellent material properties of HDPE with homogenous welded joints provides greater installation flexibility with a wide range of jointing options



Key fitting: Akavent aerator

The need for secondary venting in high-rise buildings can be eliminated with the Akavent aerator. An Akavent aerator fitting breaks the fall on each floor and as a consequence the secondary vent pipe is not required as the pressure difference stays well within the limit of 3 mbar.

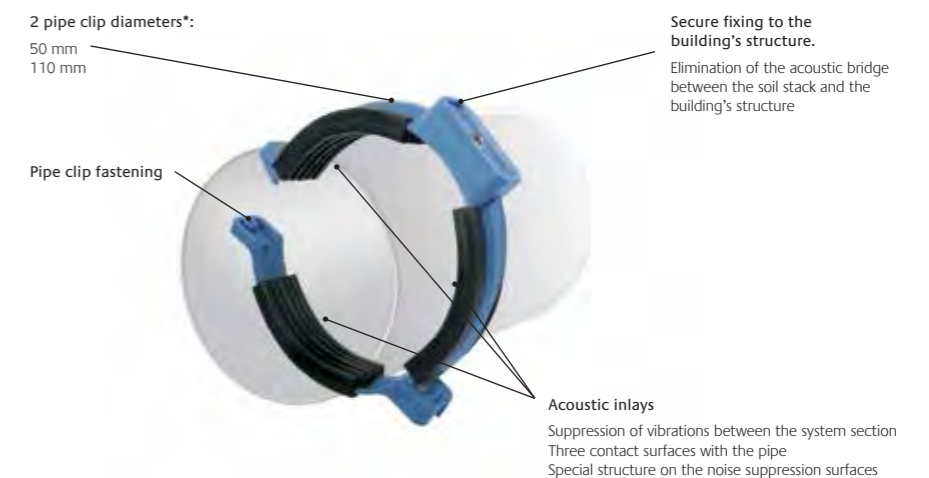
The unique shape of the fitting increases the capacity of the stack. The soil and waste flow from the higher floors smoothly converges with the flow of the lower floor.

Marley dBlue acoustic system

The Marley dBlue acoustic system is a triple-layer drainage system designed for use where improved levels of soundproofing are required. Suitable for use in domestic applications as well as hospitals and hotels, where reduced noise levels are required. Used in conjunction with the acoustic pipe clips, the dBlue system is designed to reduce noise and acoustic vibrations to a level of 19dB at 4 l/s discharge rate. It is also lightweight, resistant to temperature change and is jointed using the push-fit ring seal method.

The dBlue system is available in 40mm, 50mm, 110mm and 160mm diameters. It is also compatible with the Marley PVCu soil and waste system for branch connections.

*40 mm and 160 mm pipe clips also available.



Solvent soil

The Marley PVCu soil range has been extended with the addition of nine new 110mm solvent fittings, offering further options for the installer. The range includes the new 8-way soil manifold which offers

the flexibility of 4 top and 4 side entries, allowing for multiple inlet connections. At just 70mm above the floor slab, the manifold sits neatly at finished floor level in most typical applications.

Now available from Multikwik					
Solvent waste		Push-fit waste	Overflow	Compression waste	Traps
PVCu	ABS	Polypropylene	PVCu	Polypropylene	Polypropylene
Suitable for internal and external applications.	Lightweight and cost effective for internal installation. Easy to cut joint and install.	For internal use, ideally suited to fast installation. Cost effective solution where systems are being installed or modified.	A complete range of pipework and fittings for overflow and boiler condensate applications.	Multi-fit compression socket, for internal use. Easy installation to similar sized new or existing plastic and copper pipework.	A range of traps, which enable quick & easy installation to any new or existing plastic or copper pipework.
Available in 32, 40 and 50 mm	Available in 32, 40 and 50 mm	Available in 32, 40 mm	Available in 21.5 mm	Available in 32, 40 mm	Available in 32, 40 and 50 mm
White & Black	White, Black & Grey	White, Black & Grey	White	White & Chrome	White & Chrome

ABS and polypropylene waste pipes and fittings are designed for internal use and should not be fitted externally as they will be subject to ultraviolet light degradation. If fitted externally it is recommended that they are protected by the application of a suitable paint or are boxed in.

Solvent waste PVCu

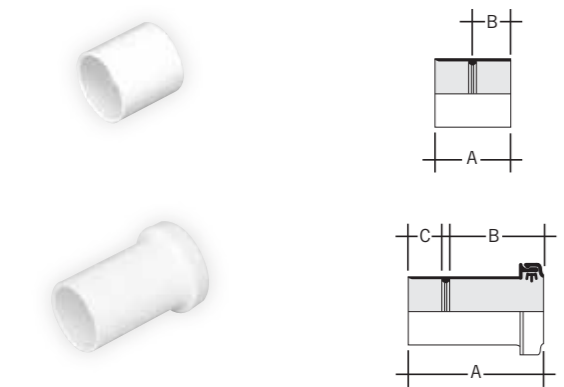
PIPE



Size mm	Code	Length	Colour	Qty
32	KP104	4m	W B	10
40	KP204	4m	W B	10
50	KP304	4m	W B	5

Double spigot

STRAIGHT COUPLINGS

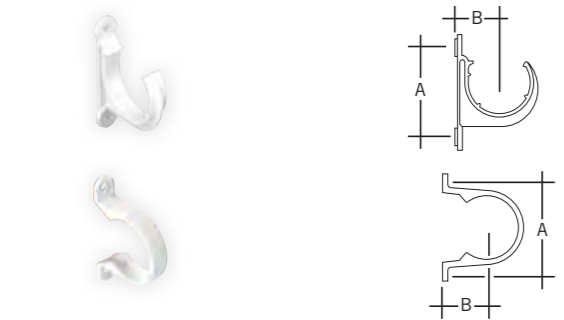


Size mm	Code	A	B	Colour	Qty
32	KSC1	46	20	W B	60
40	KSC2	53	24	W B	30
50	KSC3	66	28	W B	30

Size mm	Code	A	B	C	Colour	Qty
32	KEC1	86	61	20	W	10
40	KEC2	90	64	23	W	10
50	KEC3	82	50	30	W	10

Expansion/adaptor

PIPE CLIPS



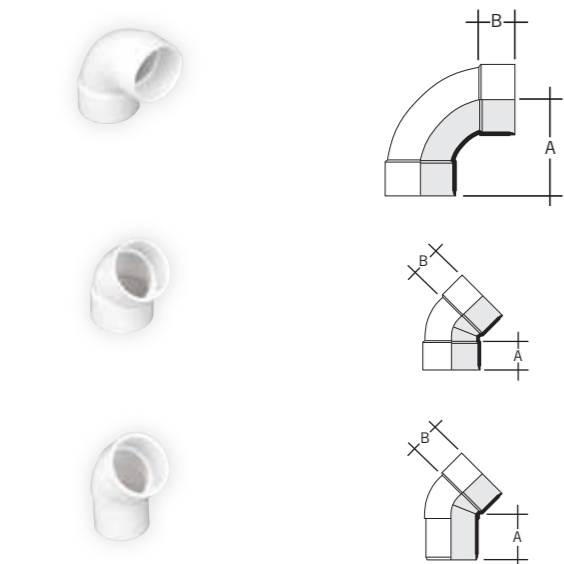
Size mm	Code	A	B	Colour	Qty
32	KF1	57	30	W B G	100
40	KF2	62	30	W B G	100
50	KF3	77	41	W B G	80

Open PCVU

Size mm	Code	A	B	Colour	Qty
32	WC3	76	30	W B	100
40	WC4	82	30	W B	100
50	WC5	100	38	W	80

Saddle

BENDS



Size mm	Code	Angle	A	B	Colour	Qty
32	KB1	88½°	57	18	W B	50
40	KB2	88½°	62	21	W B	30
50	KB3	88½°	78	28	W B	10

Solvent sockets

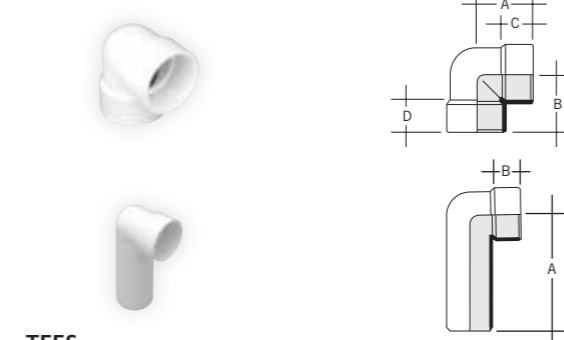
Size mm	Code	Angle	A	B	Colour	Qty
32	KB12	45°	29	18	W B	10
40	KB22	45°	33	21	W B	20
50	KB32	45°	42	28	W B	20

Solvent sockets

Size mm	Code	Angle	A	B	Colour	Qty
32	KBA12	45°	24	23	W	40
40	KBA22	45°	35	26	W	20

Solvent socket/spigot

BENDS



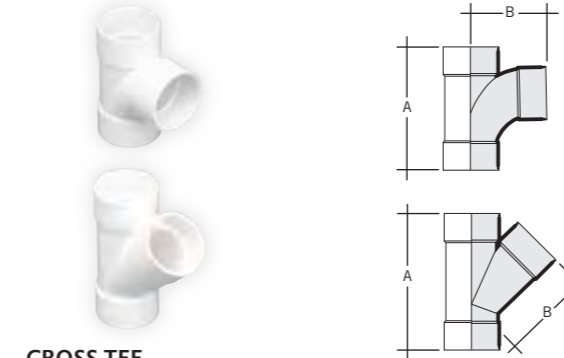
Size mm	Code	Angle	A	B	C	D	Colour	Qty
40	KBK25	90°	48	48	23	23	W B	20
50	KBK35	90°	59	50	20	28	W	10

Knuckle bend/boss adaptor KBK35 is a Radius Bend which can solvent weld over a boss upstand

Size mm	Code	Angle	A	B	Colour	Qty
32	KBS1	87½°	92	18	W	20
40	KBS2	87½°	92	23	W	20

Solvent socket/spigot

TEES



Size mm	Code	Angle	A	B	Colour	Qty
32	KT1	88½°	92	57	W B	30
40	KT2	88½°	106	62	W B	20
50	KT3	88½°	135	78	W B	10

Solvent sockets

Size mm	Code	Angle	A	B	Colour	Qty
40	KT21	45°	117	78	W	20
50	KT31	45°	149	100	W	10

Solvent sockets

CROSS TEE



Size mm	Code	Angle	A	B	Colour	Qty
40	KXT21	88½°	106	62	W	10
50	KXT31	88½°	140	87	W	10

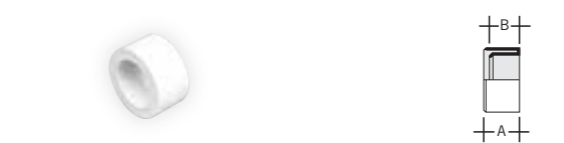
Solvent sockets

ACCESS PLUG



Size mm	Code	A	B	C	Colour	Qty
32	KAP1	22	53	8	W B	10
40	KAP2	25	57	8	W B	10
50	KAP3	33	71	8	W B	10

SOCKET REDUCER



Size mm	Code	A	B	Colour	Qty
32-21.5	KR175	22	20	W	100
40-32	KR210	28	22	W B	80
50-32	KR310	32	28	W	40
50-40	KR320	32	28	W B	40

Solvent spigot/socket

IRON ADAPTORS



Female

Size mm	Code	A	B	C	Colour	Qty
32	KFA1	50	25	20	W	10
40	KFA2	53	25	24	W	10
50	KFA3	60	25	28	W	10

Solvent socket/BSP thread

Male

Size mm	Code	A	B	C	Colour	Qty
32	KMA1	44	20	20	W	50
40	KMA2	47	20	24	W	40
50	KMA3	53	20	28	W	40

Solvent socket/BSP thread

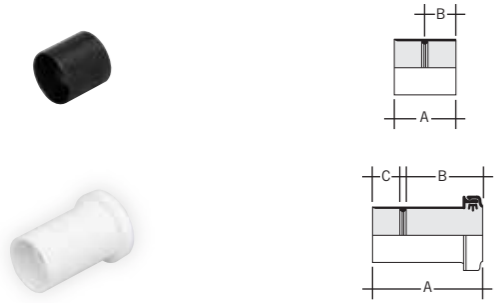
Solvent waste ABS

PIPE



Size mm	Code	Length	Colour	Qty
32	WAP33	3m	W B G	♥ 10
40	WAP43	3m	W B G	♥ 10
50	WAP53	3m	W B G	♥ 5

STRAIGHT COUPLINGS

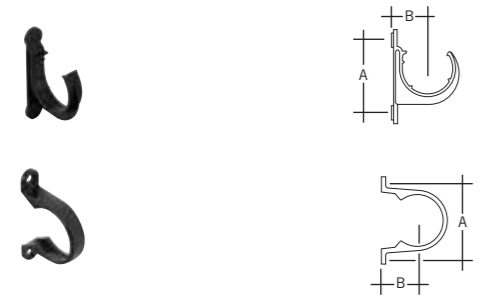


Size mm	Code	A	B	Colour	Qty
32	WAC3	40	20	W B G	♥ 40
40	WAC4	46	23	W B G	♥ 30
50	WAC5	63	30	W B G	♥ 30

Size mm	Code	A	B	C	Colour	Qty
32	WAC31	86	61	20	W	♥ 10
40	WAC41	90	64	23	W	♥ 10
50	KEC3*	82	50	30	W	♥ 10

Expansion/copper adaptor

PIPE CLIPS



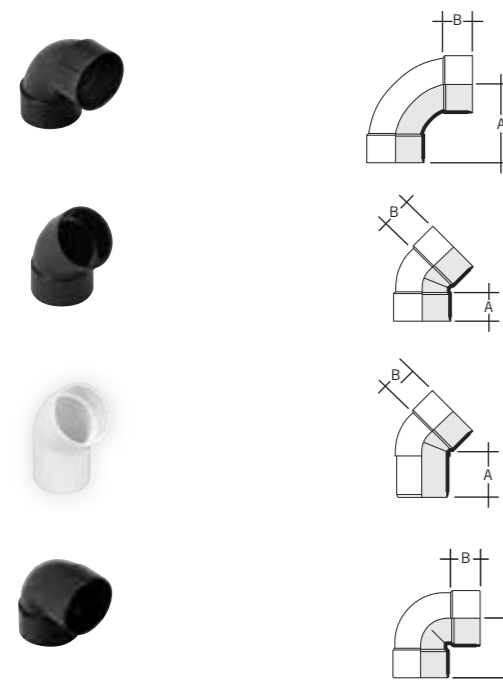
Size mm	Code	A	B	Colour	Qty
32	KF1	57	30	W B G	♥ 100
40	KF2	62	30	W B G	♥ 100
50	KF3	77	41	W B G	♥ 80

Open PCVU

Size mm	Code	A	B	Colour	Qty
32	WC3	76	30	W B G	♥ 100
40	WC4	82	30	W B G	♥ 100
50	WC5	100	38	W	♥ 80

Saddle

BENDS



Size mm	Code	Angle	A	B	Colour	Qty
32	WAB3	88½°	55	20	W B G	♥ 50
40	WAB4	88½°	64	23	W B G	♥ 30
50	WAB5	88½°	86	30	W B G	♥ 20

Size mm	Code	Angle	A	B	Colour	Qty
32	WAB31	45°	32	20	W B G	40
40	WAB41	45°	36	23	W B G	♥ 20
50	WAB51	45°	47	30	W B G	♥ 20

Size mm	Code	Angle	A	B	Colour	Qty
32	WAB32	45°	45	20	W	30
40	WAB42	45°	48	23	W	♥ 20

Spigot

Size mm	Code	Angle	A	B	Colour	Qty
32	WAB33	90°	44	20	W B G	♥ 30
40	WAB43	90°	53	23	W B G	♥ 20

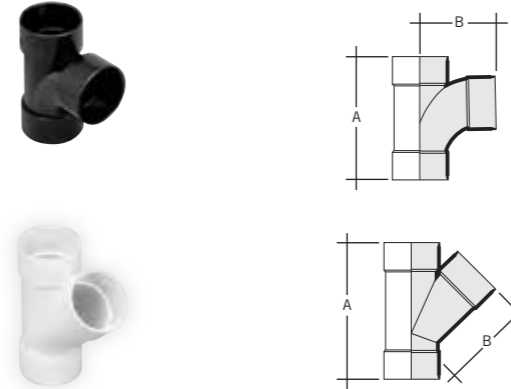
Knuckle bend

ACCESS PLUG



Size mm	Code	A	B	C	Colour	Qty
32	WAA3	22	53	8	W B G	♥ 10
40	WAA4	25	57	8	W B G	♥ 10
50	WAA5	33	71	8	W B G	♥ 10

TEES



Size mm	Code	Angle	A	B	Colour	Qty
32	WAT3	88½°	90	55	W B G	♥ 30
40	WAT4	88½°	107	64	W B G	♥ 20
50	WAT5	88½°	140	86	W B G	♥ 10

Size mm	Code	Angle	A	B	Colour	Qty
32	WAT31	45°	102	65	W	♥ 20
40	WAT41	45°	117	79	W	♥ 20
50	WAT51	45°	150	100	W	♥ 10

CROSS TEE



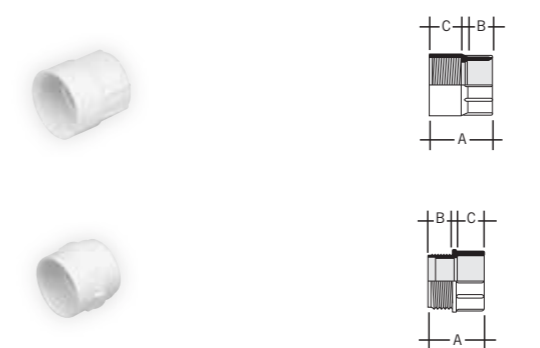
Size mm	Code	Angle	A	B	Colour	Qty
40	WAT42	88½°	106	65	W	♥ 10
50	WAT52	88½°	140	88	W	♥ 10

SOCKET REDUCER



Size mm	Code	A	B	Colour	Qty
40-32	WAR43	26	20	W B G	♥ 80
50-32	WAR53	31	20	W B G	♥ 40
50-40	WAR54	31	23	W B G	♥ 40

IRON ADAPTORS



Female

Size mm	Code	A	B	C	Colour	Qty
32	WAF3	50	25	25	W	♥ 10
40	WAF4	53	25	24	W	♥ 10
50	WAF5	60	25	28	W	♥ 10

Male

Size mm	Code	A	B	C	Colour	Qty
32	WAM3	44	20	20	W	♥ 50
40	WAM4	47	20	24	W	♥ 40
50	WAM5	53	20	28	W	♥ 40

CAP AND LINING



Size mm	Code	A	Colour	Qty
32	WAM31	58	W	♥ 10

Push-fit waste polypropylene

PIPE



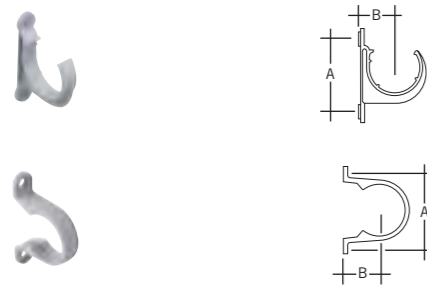
Size mm	Code	Length	Colour	Qty
32	WPP33	3m	W B G	10
40	WPP43	3m	W B G	10

STRAIGHT COUPLING



Size mm	Code	A	B	Colour	Qty
32	WPC3	66	38	W B G	10
40	WPC4	69	38	W B G	20

PIPE CLIPS



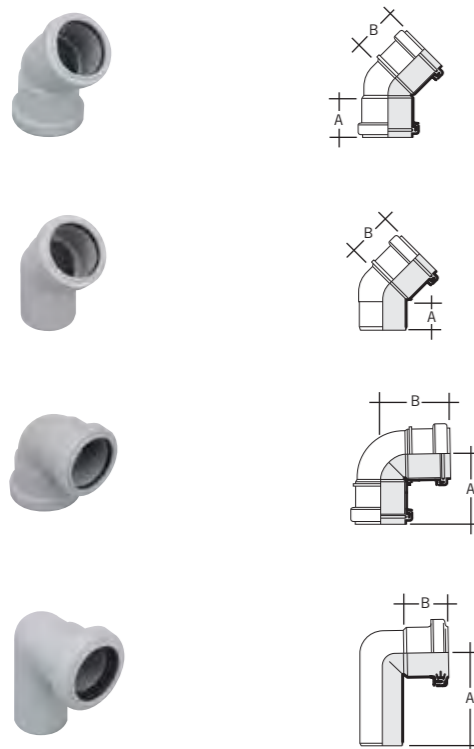
Size mm	Code	A	B	Colour	Qty
32	KF1	57	30	W B G	100
40	KF2	62	30	W B G	100

Open PCVu

Size mm	Code	A	B	Colour	Qty
32	WC3	76	30	W B G	100
40	WC4	82	30	W B G	100

Saddle

BENDS



Size mm	Code	Angle	A	B	Colour	Qty
32	WPB31	45°	42	42	W B G	20
40	WPB41	45°	43	43	W B G	20

Push-fit sockets

Size mm	Code	Angle	A	B	Colour	Qty
32	WPB32	45°	36	31	W B G	10
40	WPB42	45°	36	32	W B G	20

Spigot/push-fit sockets

Size mm	Code	Angle	A	B	Colour	Qty
32	WPB33	90°	60	60	W B G	10
40	WPB43	90°	65	65	W B G	20

Knuckle bend

Size mm	Code	Angle	A	B	Colour	Qty
32	WPB34	88½°	75	37	W B G	10
40	WPB44	88½°	75	37	W B G	30

Spigot/socket

TEE



Size mm	Code	Angle	A	B	Colour	Qty
32	WPT31	88½°	105	63	W B G	10
40	WPT41	88½°	115	68	W B G	30

Ring seal sockets

ACCESS PLUG



Size mm	Code	A	Colour	Qty
32	WPA31	20	W B G	100
40	WPA41	20	W B G	100

Push-fit spigot

SOCKET REDUCER



Size mm	Code	A	B	Colour	Qty
40-32	WPR43	45	36	W B G	10

Socket/spigot

MULTI-FIT COMPONENTS



Size mm	Code	A	B	C	Required hole size	Colour	Qty
32	WUM33	86	56	24	42	G	10
40	WUM43	86	58	24	50	G	20

Fit BS EN 1451, BS EN 1455 or BS EN 1566 pipe. Straight tank connector

MULTI-FIT WASTE CONNECTOR



Size mm	Code	A	B	Colour	Qty
32	WCC3	75	25	W	200
40	WCC4	75	25	W	150

Straight coupling



PVCu condense and overflow system

PIPE						
Size mm	Code	Length	Colour	Qty		
21.5	OP21	4m	W	30		

STRAIGHT COUPLING						
Size mm	Code	A	B	Colour	Qty	
21.5	OSC21	28	13	W	10	

PIPE CLIP						
Size mm	Code	A	B	Colour	Qty	
21.5	OC21	44	14	W	10	Saddle

BENDS						
Size mm	Code	Angle	A	Colour	Qty	
21.5	OB90	90°	25	W	10	
21.5	OB45	45°	13	W	10	

TEE							
Size mm	Code	Angle	A	B	C	Colour	Qty
21.5	OT90	90°	50	25	21.5	W	10

ADAPTORS						
Female iron						
Size mm	Code	A	B	C	Colour	Qty
21.5	OFA21	47	23	19	W	70
Straight, to 22mm						
Size mm	Code	A	B	Colour	Qty	
21.5	OCA21	39	13	W	150	
Cap and lining						
Size mm	Code	A	Colour	Qty		
21.5	OCL21	46	W	100		

TANK CONNECTORS							
Straight							
Size mm	Code	A	Colour	Qty			
21.5	OTC21	50	W	10			
Bent							
Size mm	Code	Angle	A	B	C	Colour	Qty
21.5	OBC90	90°	48	25	13	W	10
Including polyethylene washers and quick fix Acme threads							

Marley co-ex soil

110mm soil pipe with at least 30% recycled content

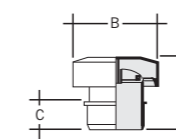
Marley 110mm soil pipe now combines the environmental benefits of using recycled material with the quality and aesthetic advantages of co-extrusion technology.

-  BS EN 1329 certified
- Looks better, with higher gloss levels
- Has improved weathering performance
- Available in grey and black colour only
- Same list price as standard white pipe
- Colour matched to all standard 110mm Marley soil fittings



Accessories

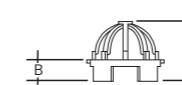
DURGO AIR ADMITTANCE VALVES



Size mm	Code	A	B	C	Colour	Qty
50	SVD2*	98	82	28	W	32
82	SVD3*	108	118	40	G	18
110	SVD4	124	138	50	G	18

Durgo valve including polystyrene insulating hood. *Can be fitted below flood level. It is recommended this is fitted in a push-fit socket. BBA certified for use up to 10 storeys.

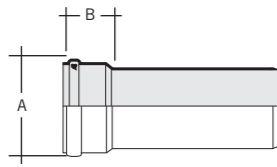
VENT TERMINAL



Size mm	Code	A	B	Colour	Qty
50	RV225	55	18	W B G	30

Push-fit soil, PVCu

PIPE



Size mm	Code	Length	A	B	Colour	Qty
82	SP303	3m	100	76	B G	♥ 156
82	SP304	4m	100	76	G	♥ 156

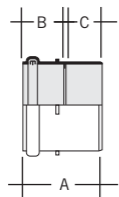
110MM CO-EX SOIL

110	SP4025	2.5m	128	70	B G	♥ 100
110	SP403	3m	128	70	W B G	♥ 2
110	SP404	4m	128	70	G	♥ 100

160	SP603	3m	182	107	G	♥ 46
160	SP604	4m	182	107	G	♥ 46

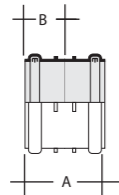
Push-fit socket

STRAIGHT COUPLINGS



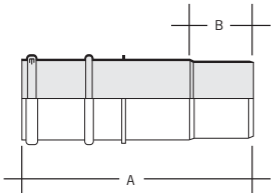
Loose pipe socket

Size mm	Code	A	B	C	Colour	Qty
82	SE300	103	50	48	B G	♥ 30
110	SE400	109	61	48	W B G	♥ 8
160	SE600	190	107	77	G	♥ 4



Double ring seal slip coupling

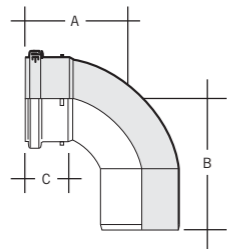
Size mm	Code	A	B	Colour	Qty
82	SE305	104	49	B G	♥ 30
110	SE405	128	64	B G	♥ 8
160	SE605	170	83	G	♥ 4



Triple socket

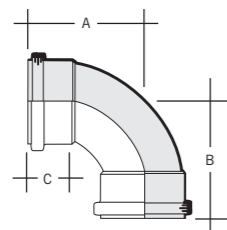
Size mm	Code	A	B	Colour	Qty
110	SE402	311	82	G	♥ 4

SHORT RADIUS BENDS



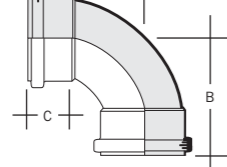
Size mm	Code	Angle	A	B	C	Colour	Qty
82	SB31	87½°	138	115	49	B G	♥ 20
110	SB41	87½°	158	157	70	W B G	♥ 4
160	SFB61	87½°	242	232	88	G	♥ 1

Push-fit socket/spigot



Size mm	Code	Angle	A	B	C	Colour	Qty
82	SB35	45°	76	73	49	B G	♥ 20
110	SB45	45°	84	89	62	W B G	♥ 4
160	SFB65	45°	120	118	85	G	♥ 2

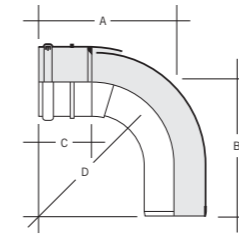
Push-fit socket/spigot



Size mm	Code	Angle	A	B	C	Colour	Qty
110	SB411	88½°	135	145	50	B G	♥ 4

Double push-fit socket

ADJUSTABLE BENDS



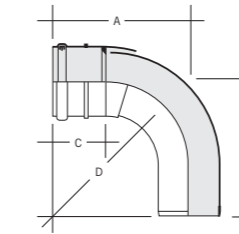
Size mm	Code	Angle	A	B	C	Colour	Qty
82	SB37	11-87½°	195	187	49	B G	10

Push-fit socket/spigot



Size mm	Code	Angle	A	B	C	Colour	Qty
110	SB46	5-14°	125	135	82	G	4

Push-fit socket/spigot



Size mm	Code	Angle	A	B	C	D	Colour	Qty
110	SB47	21-90°	189	187	90	127	B G	4

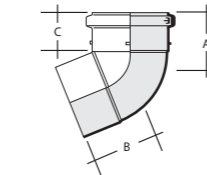
Push-fit socket/spigot



Size mm	Code	Angle	A	B	C	D	Colour	Qty
160	SB67	31-90°	285	275	96	184	G	2

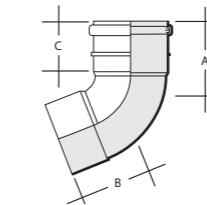
Push-fit socket/spigot

OFFSET BENDS



Size mm	Code	Angle	A	B	C	Colour	Qty
110	SNE405	67½°	94	91	60	W B G	4

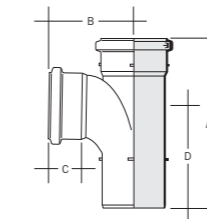
Push-fit solvent socket



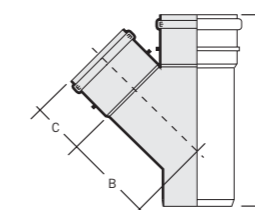
Size mm	Code	Angle	A	B	C	Colour	Qty
82	SNE300*	67½°	98	86	57	B G	30
160	SNE600	67½°	178	182	88	G	140

Push-fit solvent socket. *Shown

EQUAL BRANCHES



Size mm	Code	Angle	A	B	C	D	Colour	Qty
110	SY401	87½°	299	150	60	175	W B G	4
160	SY601	87½°	438	245	96	260	G	2

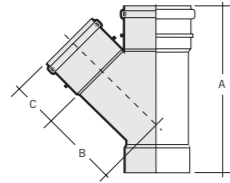


Size mm	Code	Angle	A	B	C	Colour	Qty
82	SY36	45°	229	130	55	G	10
110	SY460	45°	285	198	62	B G	4
160	SY63	45°	400	200	90	G	2

Push-fit sockets/spigot

Push-fit soil, PVCu

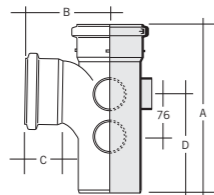
EQUAL BRANCHES



Size mm	Code	Angle	A	B	C	Colour	Qty
110	SY466	45°	282	198	62	B G	4

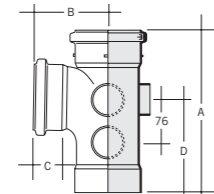
Push-fit sockets/solvent socket

FIVE BOSS BRANCHES



Size mm	Code	Angle	A	B	C	D	Colour	Qty
110	SY405	87½°	287	143	60	175	W B G	4

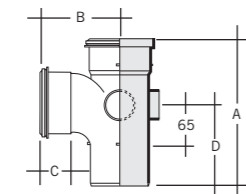
Push-fit sockets/spigot



Size mm	Code	Angle	A	B	C	D	Colour	Qty
110	SYS415	87½°	280	143	60	168	B G	4

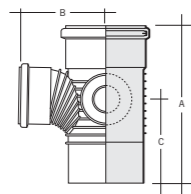
Push-fit sockets/solvent socket

THREE BOSS BRANCH



Size mm	Code	Angle	A	B	C	D	Colour	Qty
82	SY33F	87½°	212	122	52	121	B G	10

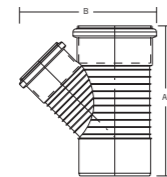
UNEQUAL BRANCHES



Size mm	Code	Angle	A	B	C	Colour	Qty
160x110	SY64	87½°	337	175	175	G	2

Push-fit sockets/spigot. 2 boss/access upstands

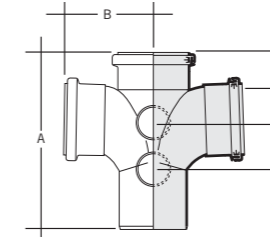
UNEQUAL BRANCHES



Size mm	Code	Angle	A	B	Colour	Qty
160x110	SY66	45°	335	306	G	2

Push-fit sockets/spigot

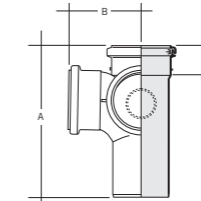
DOUBLE BRANCH



Size mm	Code	Angle	A	B	C	D	Colour	Qty
110	SY404	87½°	288	141	54	76	G	4

Push-fit sockets/spigot. 2 boss/access upstands

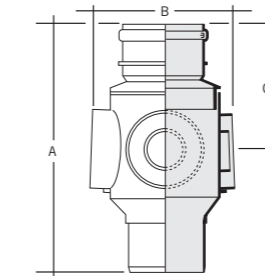
CORNER BRANCH



Size mm	Code	Angle	A	B	C	D	Colour	Qty
110	SY411°	87½°	287	143	60	175	G	4

Push-fit sockets/spigot. 1 boss upstand

MULTI BRANCH



Size mm	Code	Angle	A	B	C	Colour	Qty
110	SW64	87½°	384	160	192	G	130

Push-fit socket/spigot. 4 boss upstands

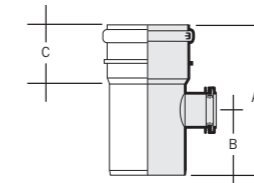
Multi branch socket

Size mm	Code	A	B	C	Colour	Qty
110	SE404	127	126	82	G	4

Multi branch access cap

Size mm	Code	A	B	C	Colour	Qty
110	SE45	150	37	64	G	10

BOSS PIPES



Size mm	Code	Angle	A	B	C	Colour	Qty
110	SW41	87½°	204	86	82	W B G	4

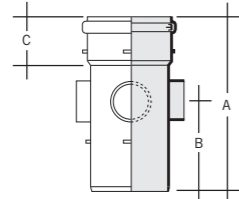
Push-fit socket/spigot. 1 40mm boss connection

Size mm	Code	Angle	A	B	C	Colour	Qty
110	SW415	87½°	204	86	82	B G	4

Push-fit socket/spigot. 1 32mm boss connection

Push-fit soil, PVCu

BOSS PIPES



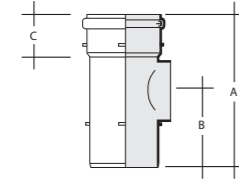
Size mm	Code	Angle	A	B	C	Colour	Qty
82	SW30	90°	202	101	49	B G	15

Push-fit socket/spigot. 3 boss upstands, 1 drilled

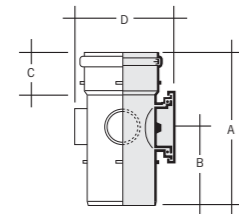
Size mm	Code	Angle	A	B	C	Colour	Qty
110	SW40	90°	244	123	70	W B G	4

Push-fit socket/spigot. 4 boss upstands

ACCESS PIPES



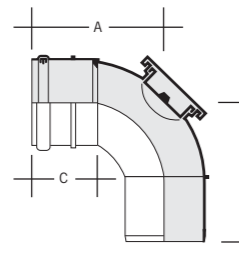
Size mm	Code	A	B	C	Colour	Qty
82	SF31	205	101	52	B G	15



Size mm	Code	A	B	C	D	Colour	Qty
110	SF41	244	123	70	152	B G	4

Socket/spigot

REAR ACCESS BENDS



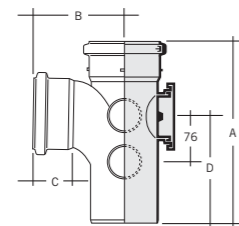
Size mm	Code	Angle	A	B	C	Colour	Qty
110	SB42	87½°	138	146	55	B G	4

Push-fit socket/spigot

Adjustable 64° – 87½°

Size mm	Code	A	B	C	Colour	Qty
82	SB38	124	127	57	B G	1

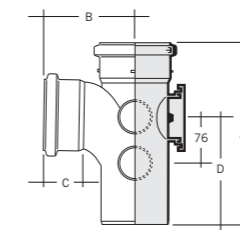
REAR ACCESS BRANCHES



Size mm	Code	Angle	A	B	C	D	Colour	Qty
110	SY402	87½°	287	143	60	175	B G	4

2 boss upstands

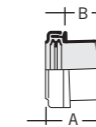
REAR ACCESS BRANCHES



Size mm	Code	Angle	A	B	C	D	Colour	Qty
82	SY34F	87½°	212	121	52	101	B G	6

Fixed

BOSS CONNECTOR



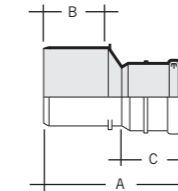
Size mm	Code	Angle	A	B	Colour	Qty
32	SA411	87½°	43	21	W B G	50

40	SA421	87½°	43	21	W B G	40
----	--------------	------	----	----	-------	----

50	SA420	87½°	66	45	B G	40
----	--------------	------	----	----	-----	----

Solvent weld with push-fit seal

LEVEL INVERT REDUCERS



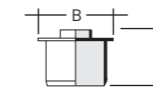
Size mm	Code	A	B	C	Colour	Qty
110x82	SRM304	192	78	82	B G	20

Spigot/socket

Size mm	Code	A	B	C	Colour	Qty
160x110	SRM604	219	90	82	G	4

Spigot/socket

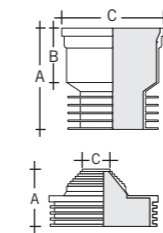
CONCENTRIC REDUCER



Size mm	Code	A	B	Colour	Qty
110-50	SE41	105	135	B G	18

Spigot to boss upstand

ADAPTOR



Size mm	Code	A	B	C	Colour	Qty
110	SA42	130	65	130	B	40

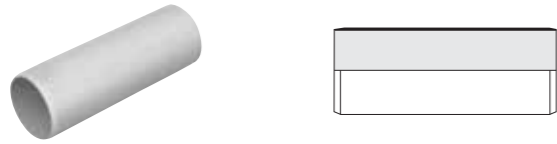
Soil to drain adaptor

Size mm	Code	A	B	C	Colour	Qty
110	SA110	58	25	34	B	10

Waste to drain adaptor

Solvent soil, PVCu

PIPE



110MM CO-EX SOIL

Size mm	Code	Length	Colour	Qty
110	SL403	3m	W B G	♥ 100
110	SL404	4m	G	♥ 100

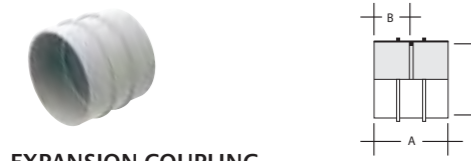
Double spigot

STRAIGHT COUPLINGS



Loose pipe socket

Size mm	Code	A	B	C	Colour	Qty
82	SE300	103	50	48	B G	♥ 30
110	SE400	109	61	48	W B G	♥ 8
160	SE600	190	107	77	G	♥ 4



Double solvent socket

Size mm	Code	A	B	C	Colour	Qty
82	SES301	93	44	82	G	♥ 50
110	SES401	102	50	124	B G	♥ 8

EXPANSION COUPLING

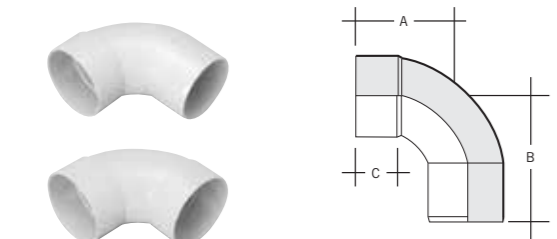


Solvent socket ring seal adaptor

Size mm	Code	A	B	C	Colour	Qty
110	SE409	105	20	52	B G	♥ 8

To accommodate thermal movement in both vertical and horizontal solvent pipework

SHORT RADIUS BENDS



Size mm	Code	Angle	A	B	C	Colour	Qty
110	SBS41	87½°	162	168	50	G	♥ 4

Solvent socket/spigot



Size mm	Code	Angle	A	B	C	D	Colour	Qty
110	SBS42	87½°	149	149	47	119	B G	♥ 4

Double solvent socket



Size mm	Code	Angle	A	B	C	Colour	Qty
110	SBS45	45°	76	76	52	B G	♥ 4

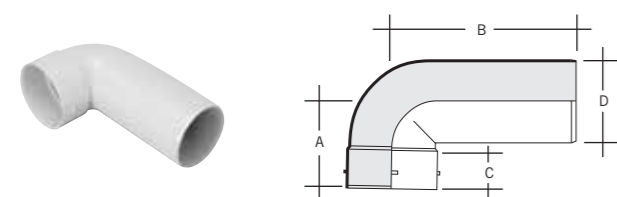
Double solvent socket



Size mm	Code	Angle	A	B	C	Colour	Qty
110	SBS415	45°	76	89	52	B G	♥ 4

Solvent socket/spigot

LONG RADIUS BEND



Size mm	Code	Angle	A	B	C	D	Colour	Qty
110	SBS40	87½°	114	240	48	110	W B G	♥ 4

Solvent socket/spigot

OFFSET BENDS



Size mm	Code	Angle	A	B	C	Colour	Qty
110	SNE405	67½°	76	61	60	W B G	♥ 4

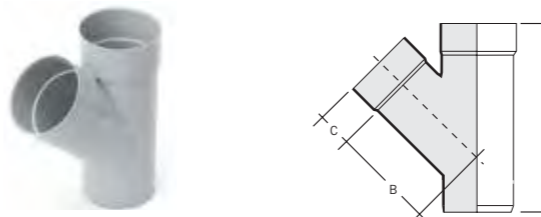
Push-fit solvent socket



Size mm	Code	Angle	A	B	C	Colour	Qty
82	SNE300*	67½°	88	48	49	B G	♥ 30
160	SNE600	67½°	178	182	96	G	♥ 140

Push-fit solvent socket. *Shown

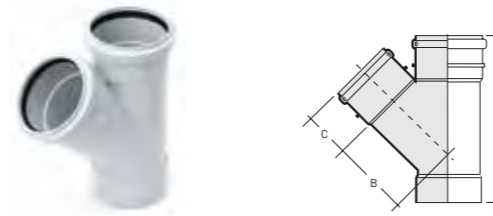
EQUAL BRANCH



Size mm	Code	Angle	A	B	C	Colour	Qty
110	SYS460	45°	277	135	55	B G	♥ 4

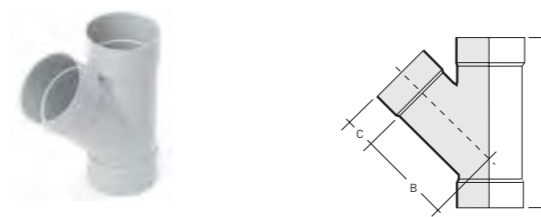
Solvent sockets/spigot

EQUAL BRANCHES



Size mm	Code	Angle	A	B	C	Colour	Qty
110	SYS466	45°	282	138	60	B G	♥ 4

Push-fit sockets/solvent socket



Size mm	Code	Angle	A	B	C	Colour	Qty
110	SYS466	45°	274	135	55	B G	♥ 4

Triple solvent sockets

FIVE BOSS BRANCH



Size mm	Code	Angle	A	B	C	D	Colour	Qty
110	SYS405	87½°	272	135	55	168	B G	♥ 4

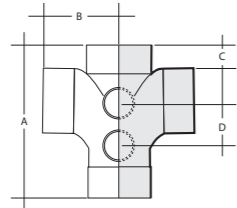
Triple solvent socket

Size mm	Code	Angle	A	B	C	D	Colour	Qty
110	SY415	87½°	279	135	55	175	B G	♥ 4

Solvent socket/spigot

Solvent soil, PVCu

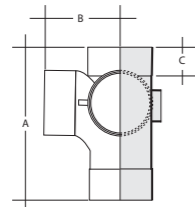
DOUBLE BRANCH



Size mm	Code	Angle	A	B	C	D	Colour	Qty
110	SYS404	87½°	274	133	45	76	G	4

All solvent sockets, 4 boss upstands

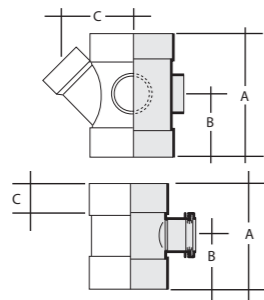
CORNER BRANCH



Size mm	Code	Angle	A	B	C	Colour	Qty
110	SYS411°	87½°	272	135	55	G	1

All solvent sockets. 1 boss upstand

BOSS PIPES



Size mm	Code	Angle	A	B	C	Colour	Qty
110	SWS4135	45°	186	93	145	G	4

Push-fit socket/spigot. 1 40mm boss connection

Size mm	Code	Angle	A	B	C	Colour	Qty
110x32	SWS415	87½°	170	85	52	W B G	4

Push-fit socket/spigot. 1 32mm boss connection

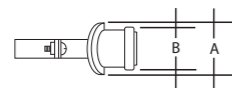
Size mm	Code	Angle	A	B	C	Colour	Qty
110x40	SWS41	87½°	170	85	52	W B G	4

Push-fit socket/spigot. 3 boss upstands, 1 drilled

Size mm	Code	Angle	A	B	C	Colour	Qty
110x50	SWS42	87½°	170	85	52	B G	4

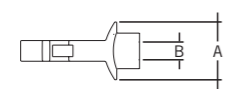
Push-fit socket/spigot. 4 boss upstands

STRAP-ON-BOSS



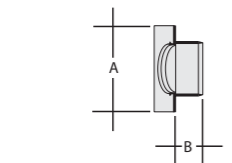
Size mm	Code	Angle	A	B	Required hole size	Colour	Qty
32x110	SWS4150	90°	70	55	50	B G	40
40x110	SWS410	90°	70	62	50	B G	40
50x110	SWS420	90°	86	75	63	B G	30

CONDENSATE STRAP-ON-BOSS



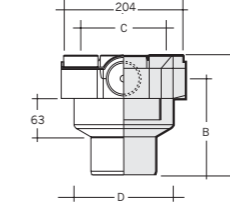
Size mm	Code	Angle	A	B	Colour	Qty
21.5x110	SWS4C	90°	70	21.5	G	50

PATCH BOSS



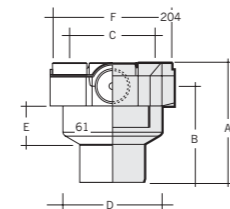
Size mm	Code	A	B	Colour	Qty
32x82	SWS332	95	18	G	20
40x82	SWS340	95	23	G	20
50x82	SWS350	95	27	G	20

8-WAY COLLAR BOSS



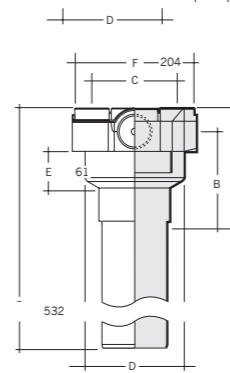
Size mm	Code	A	B	C	D	Colour	Qty
110	SCB41	195	157	140	164	G	1

Solvent socket/spigot



Size mm	Code	A	B	C	D	Colour	Qty
110	SCB541	184	146	140	164	G	1

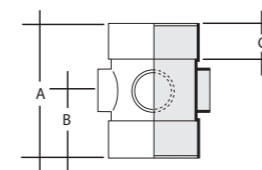
Double solvent socket tail



Size mm	Code	A	B	C	D	Colour	Qty
110	SCBL41	532	146	140	164	G	1

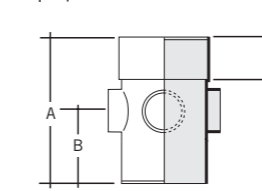
Solvent socket/spigot with 350mm spigot tail

BOSS PIPES



Size mm	Code	Angle	A	B	C	Colour	Qty
110	SWS40	90°	179	92	55	B G	4

Double solvent socket. 4 boss upstands, 1 drilled



Size mm	Code	Angle	A	B	C	Colour	Qty
110	SWS405		179	92	54	B G	4

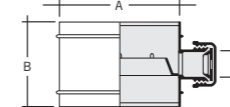
Solvent socket/spigot. 4 boss upstands, 1 drilled



Size mm	Code	Angle	A	B	C	Colour	Qty
160	SW60	90°	335	110	96	G	4

Solvent socket/spigot.

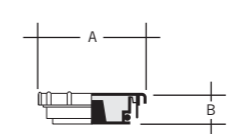
CONDENSATION TRAP



Size mm	Code	A	B	C	Colour	Qty
110	SCT4°	115	82	22	G	6

With 21.5/22mm overflow connection

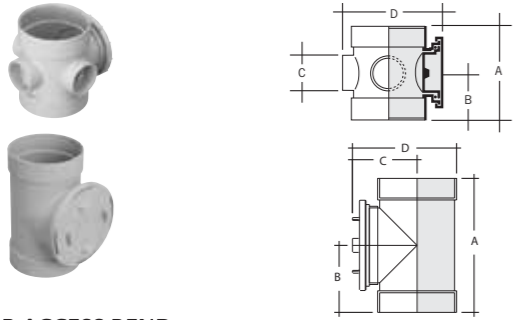
ACCESS CAPS



Size mm	Code	A	B	Colour	Qty
82	SE30	114	35	B G	30
110	SE40	150	37	B G	30
160	SE62	195	40	G	15

With pressure plug

ACCESS PIPES



Size mm	Code	A	B	C	D	Colour	Qty
110	SFS41	150	75	56	154	W B G	4

Double solvent sockets. 3 boss upstands

Size mm	Code	A	B	C	D	Colour	Qty
160	SF611	287	144	138	223	G	2

Double solvent sockets

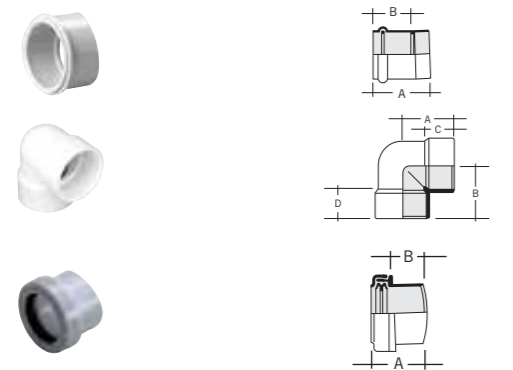
REAR ACCESS BEND



Size mm	Code	Angle	A	B	C	Colour	Qty
110	SBS420	87½°	131	128	54	B G	4

Double solvent socket

BOSS CONNECTORS



Size mm	Code	Angle	A	B	Colour	Qty
40	SA425	87½°	30	25	B G	50

Solvent weld with solvent weld joint

Size mm	Code	Angle	A	B	C	D	Colour	Qty
40	KBK25	87½°	48	48	23	23	W B	20
50	KBK35	87½°	59	50	20	28	W	10

Solvent weld

Size mm	Code	Angle	A	B	Colour	Qty
32	SA411	87½°	43	21	W B G	50
40	SA421	87½°	43	21	W B G	40
50	SA420	87½°	66	45	B G	40

CONCENTRIC REDUCERS



Size mm	Code	A	B	Colour	Qty
110-50	SE41	105	135	B G	18

Spigot to boss upstand

ECCENTRIC REDUCERS



Size mm	Code	A	B	Colour	Qty
82-50	SRM30	66	35	B G	90

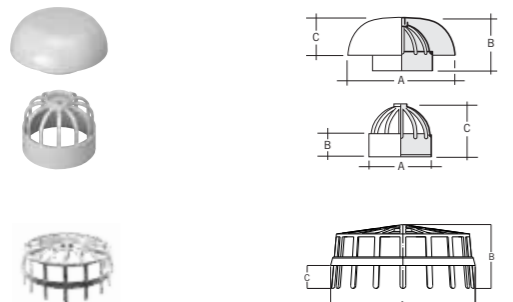
Spigot tail



Size mm	Code	A	B	C	Colour	Qty
110-50	SRM402	48	25	19	B G	10

Solvent socket to boss upstand

VENT TERMINALS

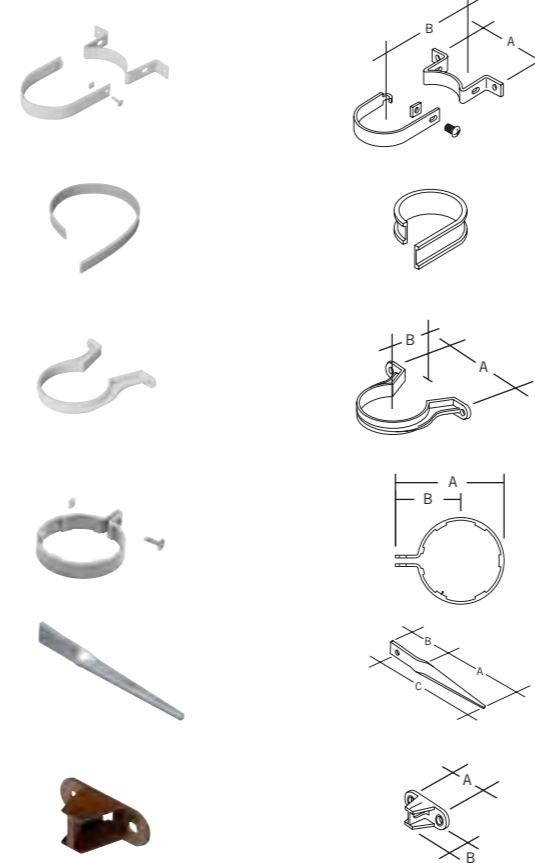


Roof cowl/vent terminal							
Size mm	Code	A	B	C	Colour	Qty	
110	SVC1	200	98	70	W B G	10	

Vent terminal							
Size mm	Code	A	B	C	Colour	Qty	
82	SV321	90	30	75	B G	30	
110	SV42	117	34	95	W B G	60	

Vent terminal							
Size mm	Code	A	B	C	Colour	Qty	
160	SV62°	160	71	25	G	20	

CLIPS



Socket clip					
Size mm	Code	A	B	Colour	Qty
110	SC41	152	101	B G	50
160	SC61	240	121	G	50

PVC coated mild steel, includes 6x20mm nut and bolt

Barrel clip collar				
Size mm	Code	Colour	Qty	
1000	SC621	G	25	

Converts socket clip to pipe clip (3x110mm or 2x160mm)

Pipe clip					
Size mm	Code	A	B	Colour	Qty
82	SC35	125	93	B G	20
110	SC45	150	101	W B G	50

PVCu

Pipe clip					
Size mm	Code	A	B	Colour	Qty
82	SC355	117	70	B G	20

For use with drive-in spike or backplate.

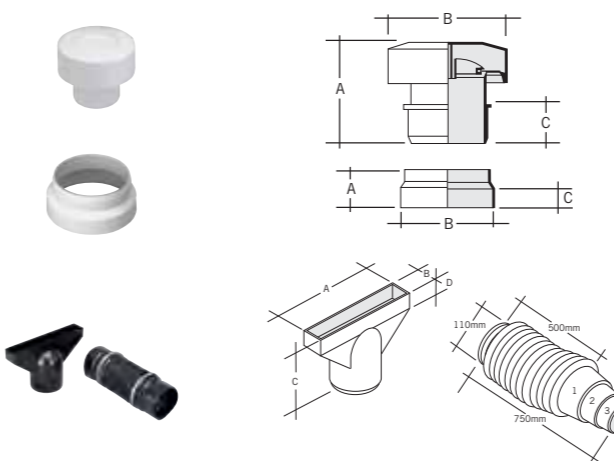
Drive-in spike					
Code	A	B	C	Colour	Qty
RS51°	115	58	19	G	50

Galvanised mild steel

Backplate				
Code	A	B	Colour	Qty
RCB300	48	31	W B G BR	100

For use with SC355

DURGO AIR ADMITTANCE VALVES



Size mm	Code	A	B	C	Colour	Qty
50	SVD2*	98	82	28	W	32
82	SVD3*	108	118	40	G	18
110	SVD4	124	138	50	G	18

Durgo valve including polystyrene insulating hood. *Can be fitted below flood level. It is recommended this is fitted in a push-fit socket

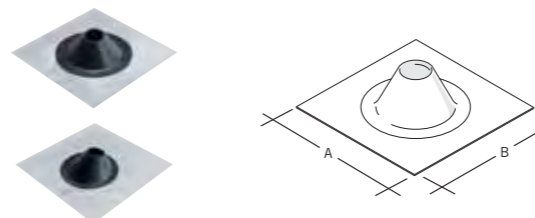
Weathering collar						
Size mm	Code	A	B	C	Colour	Qty
82	SV31*	51	94	25	B	100
110	SV43	57	130	25	W B G	35

PVCu for solvent joint to pipe *Available in black rubber only.

Ridge vent connector							
Size mm	Code	A	B	C	D	Colour	Qty
110	SV44	276	39	175	32	B	20

Fits Marley Roof Tiles' Ventilated and Soil Vent Pipe Terminals. Comprises of an adaptor and flexible piping

WEATHERING SLATES



Size mm	Code	A	B	Colour	Qty
400	SAS40	400	400	G	5

Flat

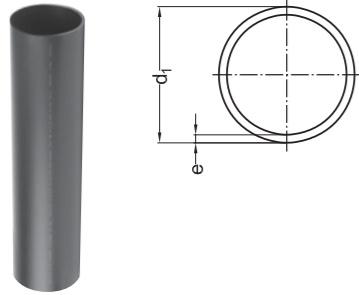
Size mm	Code	A	B	Colour	Qty
450	SAS45	450	450	G	5
610	SAS61	610	610	G	5

Inclined. Aluminium to rubber

HDPE drainage

PIPE TEMPERED

PIPE LENGTH = 5 M



d ₁	Code	e	cm ²	Qty
40	S 10 04 00	3.0	9.10	94
50	S 10 05 00	3.0	15.20	167
56	S 10 56 00	3.0	19.60	149
63	S 10 06 00	3.0	25.50	116
75	S 10 07 00	3.0	37.40	81
90	S 10 09 00	3.5	54.10	57

Pipe classification: 40-160=12.5 200-315=16
cm² = cross sectional area of flow

d ₁	Code	e	cm ²	Qty
110	S 10 11 00	4.2	80.70	75
125	S 10 12 00	4.8	104.20	63
160	S 10 16 00	6.2	171.10	39
200	S 10 20 00	6.2	276.41	20
250	S 10 25 00	7.7	431.52	12
315	S 10 31 00	9.7	685.35	10

ELECTROFUSION COUPLER AKAFUSION

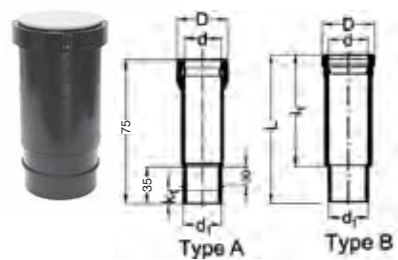


d ₁	Code	D	L	System	Qty
40	S 41 04 95	52	54	5A/80s	20
50	S 41 05 95	62	54	5A/80s	20
56	S 41 56 95	68	54	5A/80s	20
63	S 41 06 95	75	54	5A/80s	20
75	S 41 07 95	87	54	5A/80s	20
90	S 41 09 95	102	56	5A/80s	20

d ₁	Code	D	L	System	Qty
110	S 41 11 95	122	58	5A/80s	20
125	S 41 12 95	137	66	5A/80s	10
160	S 41 16 95	172	66	5A/80s	5
200	S 41 20 65	233	175	220V/420s	1
250	S 41 25 65	283	175	220V/420s	1
315	S 41 31 65	349	175	220V/420s	1

EXPANSION SOCKET ELECTROFUSION

WITH PROTECTION PLUG: SBR SEAL



Type A					
d ₁	Code	D	d	L	Qty
75	S 42 07 20	100	76	256	20
90	S 42 09 20	116	91	256	20
110	S 42 11 20	137	112	256	20
125	S 42 12 20	153	127	256	10
160	S 42 16 20	189	162	256	5

Type B							
d ₁	Code	D	d	L	I ₁	Qty	
40	S 40 04 20	58	41	172	135	20	
50	S 40 05 20	68	51	172	135	20	
56	S 40 56 20	74	57	172	135	20	
63	S 40 06 20	*	78	64	155	135	20
200	S 40 20 20	**	230	202	460	230	1
250	S 40 25 20	**	300	253	480	250	1
315	S 40 31 20	**	370	319	510	270	1

* butt-weld only. ** without protection plug.

PLUG-IN SOCKET

WITH PROTECTION PLUG: SBR SEAL



d ₁	Code	D	d	L	I ₁	Qty
40	S 42 04 50	53	41	73	54	50
50	S 42 05 50	67	51	75	54	50
56	S 42 56 50	72	57	80	54	20
63	S 42 06 50	84	64	93	69	20
75	S 42 07 50	96	76	95	69	20

butt-weld only

BEND 90°



d ₁	Code	l ₁	r	Qty
160	S 11 16 91	160	160	10
200	S 11 20 91	205	200	10

Butt-weld only

d ₁	Code	l ₁	r	Qty
250	S 11 25 91	290	265	1
315	S 11 31 91	340	300	1

BEND 90°



d ₁	Code	l ₁	l ₂	r	k ₁	Qty
40	S 11 04 92	93	43	40	45	50
50	S 11 05 92	103	53	50	45	50
56	S 11 56 92	120	59	56	55	20
63	S 11 06 92	130	66	65	60	20

Long Radius.
Electrofusible at one side

d ₁	Code	l ₁	l ₂	r	k ₁	Qty
75	S 11 07 92	140	78	75	60	25
90	S 11 09 92	155	93	90	60	25
110	S 11 11 92	180	113	110	60	20
125	S 11 12 92	190	128	125	60	10

BEND 15°



d ₁	Code	l ₁	r	k ₁	Qty
110	S 18 11 15	125	165	65	1
125	S 18 12 15	150	188	45	1
160	S 18 16 15	175	240	100	1

Fabricated

d ₁	Code	l ₁	r	k ₁	Qty
200	S 18 20 15	200	300	125	1
250	S 18 25 15	225	375	135	1
315	S 18 31 15	250	473	175	1

BEND 30°



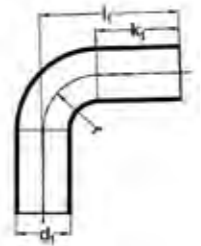
d ₁	Code	l ₁	r	k ₁	Qty
110	S 18 11 30	125	165	60	1
125	S 18 12 30	150	188	85	1
160	S 18 16 30	175	240	100	1

Fabricated

d ₁	Code	l ₁	r	k ₁	Qty
200	S 18 20 30	200	200	115	1
250	S 18 25 30	225	255	125	1
315	S 18 31 30	250	320	135	1

HDPE drainage

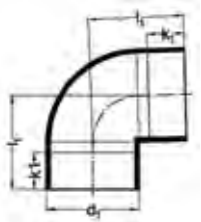
BEND 88,5°



d ₁	Code	l ₁	r	k ₁	Qty
200	S 11 20 88	290	200	100	1
250	S 11 25 88	350	265	100	1

d ₁	Code	l ₁	r	k ₁	Qty
315	S 11 31 88	360	300	100	1

ELBOW 88.5°



d ₁	Code	l ₁	k ₁	Qty
40	S 12 04 88	55	25	20
50	S 12 05 88	60	20	20
56	S 12 56 88	65	20	20
63	S 12 06 88	70	20	20
75	S 12 07 88	75	20	20

d ₁	Code	l ₁	k ₁	Qty
90	S 12 09 88	80	20	20
110	S 12 11 88	95	25	20
125	S 12 12 88	100	25	10
160	S 12 16 88	120	25	10

ELBOW 45°

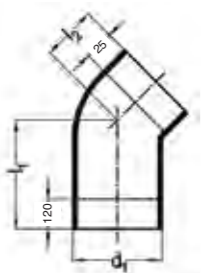


d ₁	Code	l ₁	k ₁	Qty
40	S 12 04 45	40	20	20
50	S 12 05 45	45	20	20
56	S 12 56 45	45	20	20
63	S 12 06 45	50	20	20
75	S 12 07 45	50	20	20
90	S 12 09 45	55	20	20

d ₁	Code	l ₁	k ₁	Qty
110	S 12 11 45	60	25	20
125	S 12 12 45	65	25	20
160	S 12 16 45	69	20	5
200	S 12 20 45	173	60	5
250	S 12 25 45	182	60	5
315	S 12 31 45	195	60	5

Wall thickness according to size S12.5

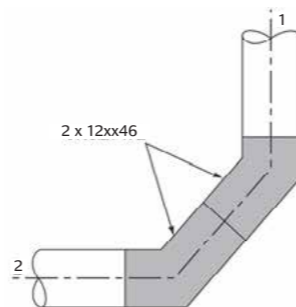
ELBOW 45°



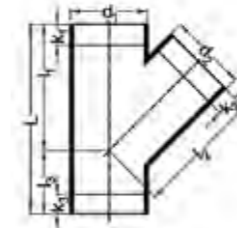
d ₁	Code	l ₁	l ₂	Qty
75	S 12 07 46	145	50	20
90	S 12 09 46	150	55	20
110	S 12 11 46	155	60	20

Long spigot

Elbows 45° with long spigot are applied for making the transition from stack to building drain acc. to EN 12056 (see drawing).
1 stack 2 building drain



BRANCH 45°



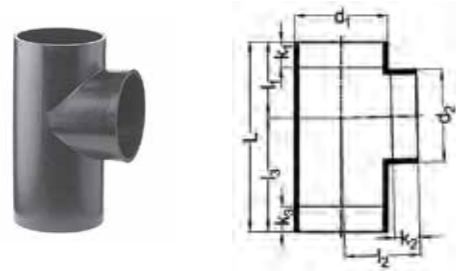
d ₁ /d ₂	Code	L	l ₁ /l ₂	l ₃	k ₁	k ₂	k ₃	Qty
40/40	S 30 04 04	135	90	45	30	30	25	40
50/40	S 30 05 04	165	110	55	45	45	40	40
50/50	S 30 05 05	165	110	55	20	20	35	40
56/40	S 30 56 04	180	120	60	35	30	60	20
56/50	S 30 56 05	180	120	60	30	30	40	20
56/56	S 30 56 56	180	120	60	25	25	40	20
63/40	S 30 06 04	195	130	65	40	45	45	20
63/50	S 30 06 05	195	130	65	30	30	50	20
63/56	S 30 06 56	195	130	65	25	25	45	20
63/63	S 30 06 06	195	130	65	20	20	40	20
75/40	S 30 07 04	210	140	70	60	50	65	20
75/50	S 30 07 05	210	140	70	40	30	70	20
75/56	S 30 07 56	210	140	70	35	25	55	20
75/63	S 30 07 06	210	140	70	35	25	45	20
75/75	S 30 07 07	210	140	70	25	25	40	20
90/40	S 30 09 04	240	160	80	65	55	75	10
90/50	S 30 09 05	240	160	80	50	40	80	10
90/56	S 30 09 56	240	160	80	45	35	75	10
90/63	S 30 09 06	240	160	80	40	30	70	10
90/75	S 30 09 07	240	160	80	35	30	65	10
90/90	S 30 09 09	240	160	80	20	20	50	10
110/40	S 30 11 04	270	180	90	75	60	95	10
110/50	S 30 11 05	270	180	90	55	50	95	10
110/56	S 30 11 56	270	180	90	45	40	90	10
110/63	S 30 11 06	270	180	90	40	35	85	10
110/75	S 30 11 07	270	180	90	35	30	75	10
110/90	S 30 11 09	270	180	90	30	25	65	10
110/110	S 30 11 11	270	180	90	20	20	55	15
125/50	S 30 12 05	300	200	100	115	60	75	10
125/56	S 30 12 56	300	200	100	110	50	45	10
125/63	S 30 12 06	300	200	100	60	45	105	10
125/75	S 30 12 07	300	200	100	50	40	95	10

d ₁ /d ₂	Code	L	l ₁ /l ₂	l ₃	k ₁	k ₂	k ₃	Qty
125/90	S 30 12 09	300	200	100	35	30	30	10
125/110	S 30 12 11	300	200	100	25	25	25	10
125/125	S 30 12 12	300	200	100	20	20	20	5
160/50	S 30 16 05	* 375	250	125	120	115	65	5
160/56	S 30 16 56	* 375	250	125	120	115	65	5
160/63	S 30 16 06	* 375	250	125	120	115	65	5
160/75	S 30 16 07	375	250	125	120	115	65	5
160/90	S 30 16 09	375	250	125	110	105	55	5
160/110	S 30 16 11	375	250	125	50	40	45	5
160/125	S 30 16 12	375	250	125	10	20	40	5
160/160	S 30 16 16	375	250	125	10	15	25	5
200/75	S 30 20 07	540	360	180	95	160	175	1
200/90	S 30 20 09	540	360	180	80	150	165	1
200/110	S 30 20 11	540	360	180	65	140	150	1
200/125	S 30 20 12	540	360	180	55	130	140	1
200/160	S 30 20 16	540	360	180	35	85	115	1
200/200	S 30 20 20	700	430	270	160	160	230	1
250/110	S 30 25 11	* 660	440	220	150	185	215	1
250/125	S 30 25 12	* 660	440	220	140	175	205	1
250/160	S 30 25 16	* 660	440	220	120	130	180	1
250/200	S 30 25 20	* 660	440	220	90	50	150	1
250/250	S 30 25 25	* 900	600	300	160	160	250	1
315/110	S 30 31 11	* 840	560	280	235	260	305	1
315/125	S 30 31 12	* 840	560	280	220	250	290	1
315/160	S 30 31 16	* 840	560	280	200	205	270	1
315/200	S 30 31 20	* 840	560	280	175	125	240	1
315/250	S 30 31 25	* 840	560	280	140	130	205	1
315/315	S 30 31 31	* 950	610	340	170	170	280	1

* Fabricated

HDPE drainage

BRANCH 88.5°

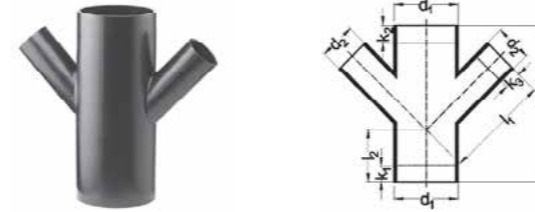


d ₁ , d ₂	Code	L	I ₁ /I ₂	I ₃	k ₁	k ₂	k ₃	Qty
40/40	S 20 04 04	130	55	75	25	25	45	40
50/40	S 20 05 04	150	60	90	30	25	60	40
50/50	S 20 05 05	150	60	90	25	25	55	40
56/50	S 20 56 05	175	70	105	35	30	70	20
56/56	S 20 56 56	175	70	105	30	30	65	20
63/40	S 20 06 04	175	70	105	30	30	70	20
63/50	S 20 06 05	175	70	105	35	30	70	20
63/56	S 20 06 56	175	70	105	30	30	65	20
63/63	S 20 06 06	175	70	105	30	30	60	20
75/40	S 20 07 04	175	70	105	40	25	75	20
75/50	S 20 07 05	175	70	105	35	25	70	20
75/56	S 20 07 56	175	70	105	30	25	65	20
75/63	S 20 07 06	175	70	105	25	25	60	20
75/75	S 20 07 07	175	70	105	25	25	55	20
90/40	S 20 09 04	200	80	120	45	25	85	10
90/50	S 20 09 05	200	80	120	45	25	85	10
90/56	S 20 09 56	200	80	120	40	25	85	10
90/63	S 20 09 06	200	80	120	35	25	80	10
90/75	S 20 09 07	200	80	120	30	25	75	10
90/90	S 20 09 09	200	80	120	25	25	70	10
110/40	S 20 11 04	225	90	135	60	25	100	10
110/50	S 20 11 05	225	90	135	50	25	95	10
110/56	S 20 11 56	225	90	135	45	25	90	10
110/63	S 20 11 06	225	90	135	40	25	90	10
110/75	S 20 11 07	225	90	135	35	25	85	10
110/90	S 20 11 09	225	90	135	30	25	75	10
110/110	S 20 11 11	225	90	135	20	20	65	15
125/50	S 20 12 05 *	250	100	150	60	25	110	10
125/56	S 20 12 56 *	250	100	150	55	25	105	10
125/63	S 20 12 06 *	250	100	150	50	25	105	10
125/75	S 20 12 07	250	100	150	45	25	100	10
125/90	S 20 12 09	250	100	150	40	25	90	10

d ₁ , d ₂	Code	L	I ₁ /I ₂	I ₃	k ₁	k ₂	k ₃	Qty
125/110	S 20 12 11	250	100	150	30	20	80	10
125/125	S 20 12 12	250	100	150	20	20	70	10
160/50	S 20 16 05 *	350	140	210	75	30	145	5
160/56	S 20 16 56 *	350	140	210	75	30	145	5
160/63	S 20 16 06 *	350	140	210	65	30	140	5
160/75	S 20 16 07 *	350	140	210	80	45	150	5
160/90	S 20 16 09 *	350	140	210	55	30	125	5
160/110	S 20 16 11	350	140	210	60	45	135	5
160/125	S 20 16 12	350	140	210	50	45	125	5
160/160	S 20 16 16	350	140	210	30	35	105	5
200/75	S 20 20 07 *	360	180	180	90	60	90	1
200/90	S 20 20 09 *	360	180	180	80	60	80	1
200/110	S 20 20 11 *	360	180	180	70	60	70	1
200/125	S 20 20 12 *	360	180	180	65	60	65	1
200/160	S 20 20 16 *	360	180	180	45	60	45	1
200/200	S 20 20 20 *	360	180	180	25	60	25	1
250/110	S 20 25 11 *	440	220	220	110	70	110	1
250/125	S 20 25 12 *	440	220	220	105	70	105	1
250/160	S 20 25 16 *	440	220	220	85	70	85	1
250/200	S 20 25 20 *	480	240	240	65	40	65	1
250/250	S 20 25 25 *	480	240	240	40	40	40	1
315/110	S 20 31 11 *	560	280	280	170	90	170	1
315/125	S 20 31 12 *	560	280	280	165	90	165	1
315/160	S 20 31 16 *	560	280	280	145	90	145	1
315/200	S 20 31 20 *	560	280	280	120	65	120	1
315/250	S 20 31 25 *	560	280	280	95	65	95	1
315/315	S 20 31 31 *	560	280	280	70	65	70	1

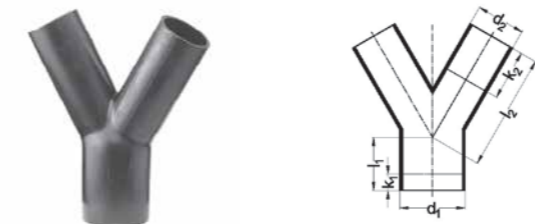
* Fabricated

DOUBLE BRANCH 45°



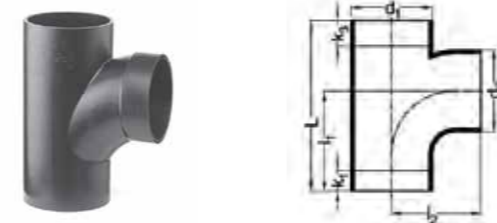
d ₁ , d ₂	Code	L	I ₁	I ₂	k ₁	k ₂	k ₃	Qty
110/40	S 36 11 04	270	180	100	110	65	45	10
110/50	S 36 11 05	270	180	100	100	65	45	10
110/110	S 36 11 11	270	180	100	65	20	20	10

DOUBLE BRANCH 60°



d ₁ , d ₂	Code	I ₁	I ₂	k ₁	k ₂	Qty
50/40	S 37 05 04	55	110	40	50	10
63/50	S 37 06 05	65	130	50	60	10
110/110	S 37 11 11	90	102			5

BRANCH 88.5° SWEPT ENTRY



d ₁ , d ₂	Code	L	I ₁	I ₂	k ₁	k ₃	Qty
110/110	S 25 11 11	230	140	120	90	20	15

CLEAN OUT BRANCH 45°



d ₁ , d ₂	Code	D	L	I ₁	I ₂	I ₃	k ₁	k ₃	Qty
110/110	S 33 11 00	140	270	180	195	90	20	55	1
125/110	S 33 12 00	140	300	200	200	100	25	25	1
160/110	S 33 16 00	140	375	250	220	125	45	45	1

CLEAN OUT BRANCH 90°



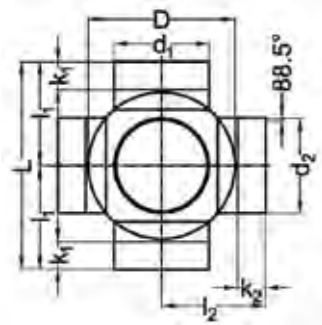
d ₁ , d ₂	Code	D	L	I ₁	I ₂	I ₃	k ₁	k ₃	Qty
40/40	S 23 04 00	64	130	55	80	75	25	45	1
50/50	S 23 05 00	72	150	60	72	90	25	55	1
56/56	S 23 56 00	83	175	70	100	105	30	65	1
63/63	S 23 06 00	87	175	70	100	105	30	60	1
75/75	S 23 07 00	91	175	70	100	105	25	55	1
90/90	S 23 09 00	118	200	80	100	120	25	70	1
110/110	S 23 11 20	140	225	90	115	135	20	65	1
125/110	S 23 12 00	140	250	100	123	150	20	80	1
160/110	S 23 16 00	140	350	140	140	210	60	135	1
200/110	S 23 20 00	140	360	180	160	180	90	90	1
250/110	S 23 25 00	140	440	220	185	220	110	110	1
315/110	S 23 31 00	140	560	280	220	280	170	170	1

HDPE drainage

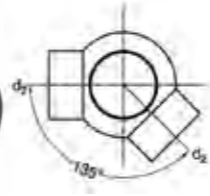
CLEAN OUT BRANCH 45°

d ₁ /d ₂	1 DOUBLE 90°		2 DOUBLE 135°		3 DOUBLE 180°		4 TRIPLE 90°		5 TRIPLE 135°		6 FOURFOLD 90°		L	I ₁	I ₂	D	k ₁	k ₂	Qty
	Code	Code	Code	Code	Code	Code	Code	Code	Code	Code									
110/50	S 24 11 14	S 24 11 24	S 24 11 34	S 34 11 14	S 34 11 24	S 44 11 14							240	120	130	170	30	20	1
110/56	S 24 11 15	S 24 11 25	S 24 11 35	S 34 11 15	S 34 11 25	S 44 11 15							240	120	130	170	30	20	1
110/63	S 24 11 16	S 24 11 26	S 24 11 36										240	120	130	170	30	20	1
110/75	S 24 11 17	S 24 11 27	S 24 11 37	S 34 11 17	S 34 11 27	S 44 11 17							240	120	130	170	30	20	1
110/90	S 24 11 19	S 24 11 29	S 24 11 39	S 34 11 19	S 34 11 29	S 44 11 19							240	120	130	170	30	20	1
110/110	S 24 11 01	S 24 11 02	S 24 11 03	S 34 11 01	S 34 11 02	S 44 11 01							240	120	110	170	30	30	1
125/75	S 24 12 17	S 24 12 27	S 24 12 37	S 34 12 17	S 34 12 27	S 44 12 17							260	130	145	190	30	20	1
125/110	S 24 12 01	S 24 12 02	S 24 12 03	S 34 12 01	S 34 12 02	S 44 12 01							260	130	125	190	30	40	1
125/125	S 24 12 12	S 24 12 22	S 24 12 32	S 34 12 12	S 34 12 22	S 44 12 12							260	130	125	190	30	40	1

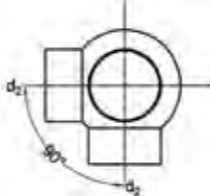
GENERAL DIMENSIONS



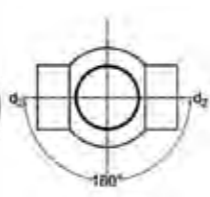
1 DOUBLE BALL BRANCH 88.5°
FABRICATED - 90°



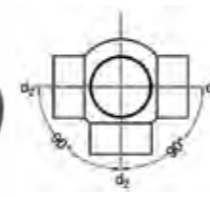
2 DOUBLE BALL BRANCH 88.5°
FABRICATED - 135°



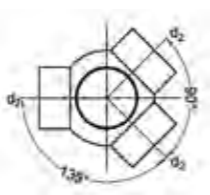
3 DOUBLE BALL BRANCH 88.5°
FABRICATED - 180°



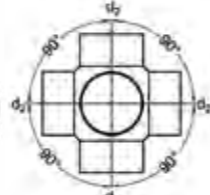
4 TRIPLE BALL BRANCH 88.5°
FABRICATED - 90°



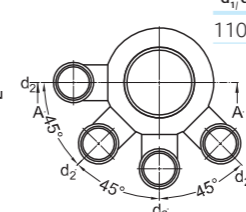
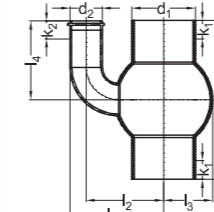
5 TRIPLE BALL BRANCH 88.5°
FABRICATED - 135°



6 FOURFOLD BALL BRANCH 88.5°
FABRICATED - 90°

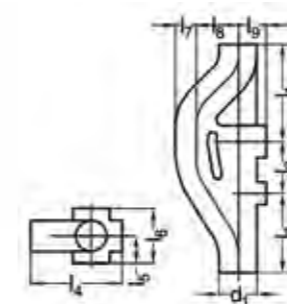


FOUR WAY SOIL MANIFOLD 135°



d ₁ /d ₂	Code	L	L ₁	L ₂	L ₃	L ₄	k ₁	k ₂	Qty
110/56	S 44 11 56	275	162	134	85	136	30	70	1

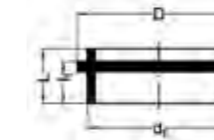
AERATOR AKAVENT



d ₁	Code	L	I ₁	I ₂	I ₃	I ₄	I ₅	I ₆	I ₇	I ₈	I ₉	Qty
110	S 60 11 07 *	750	320	170	260	275	90	180	55	130	90	1
160	S 60 11 07 *	715	320	160	235	310	100	200	75	125	110	1

* 1/2/3 = max. Ø 110 mm - 4/5/6 = max. Ø 75 mm
butt-weld only

END CAP



d ₁	Code	D	L	I ₁	Qty
40	S 67 04 07	46	15	11	20
50	S 67 05 07	57	16	12	20
56	S 67 56 07	64	16	12	20
63	S 67 06 07	71	18	14	20
75	S 67 07 07	85	21	16	20
90	S 67 09 07	100	19	19	20
110	S 67 11 07	120	19	19	20

Butt-weld only. End cap size 125-315 see Art. Nr. 67xx09.

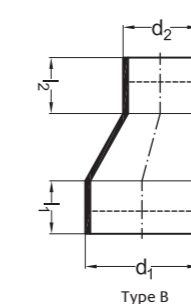
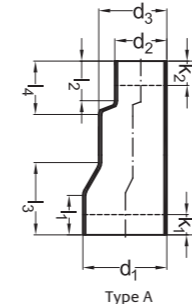
END CAP HDPE



d ₁	Code	L	Qty
125	S 67 12 09	35	1
160	S 67 16 09	45	1
200	S 67 20 09	55	1
250	S 67 25 09	30	1
315	S 67 31 09	30	1

Butt-weld only. Sizes 40-110 see Art. Nr. 67xx07.

REDUCER ECCENTRIC LONG

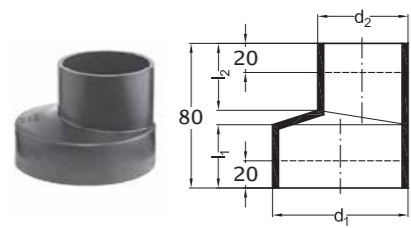


d ₁	Code	L	I ₁	I ₂	I ₃	I ₄	d ₃	k ₁	k ₂	Qty
200/110	S 14 20 11 *	335	95	36	165	55	160	75	20	1
200/125	S 14 20 12 *	335	95	36	165	55	160	75	20	1
200/160	S 14 20 16 **	260	95	95				75	75	1
250/200	S 14 25 20 **	290	105	95				85	75	1
315/200	S 14 31 20 *	580	115	95	235	190	250	95	75	1
315/250	S 14 31 25 **	340	115	105				75	85	1

* type A ** type B

HDPE drainage

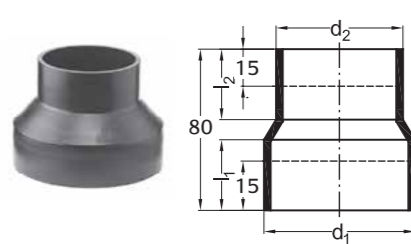
REDUCER ECCENTRIC



d ₁ /d ₂	Code	I ₁	I ₂	Qty
50/40	S 16 05 04	35	37	20
56/40	S 16 56 04	35	37	20
56/50	S 16 56 05	35	37	20
63/40	S 16 06 04	35	37	20
63/50	S 16 06 05	35	37	20
63/56	S 16 06 56	35	37	20
75/40	S 16 07 04	35	30	20
75/50	S 16 07 05	35	37	20
75/56	S 16 07 56	35	37	20
75/63	S 16 07 06	35	37	20
90/40	S 16 09 04	30	33	20
90/50	S 16 09 05	30	34	20
90/56	S 16 09 56	30	36	20
90/63	S 16 09 06	30	39	20
90/75	S 16 09 07	30	44	20

d ₁ /d ₂	Code	I ₁	I ₂	Qty
110/40	S 16 11 04	31	34	10
110/50	S 16 11 05	31	34	10
110/56	S 16 11 56	31	35	10
110/63	S 16 11 06	31	34	10
110/75	S 16 11 07	31	36	20
110/90	S 16 11 09	31	41	20
125/50	S 16 12 05	35	37	10
125/56	S 16 12 56	35	37	10
125/63	S 16 12 06	35	37	10
125/75	S 16 12 07	35	30	10
125/90	S 16 12 09	35	32	10
125/110	S 16 12 11	36	36	10
160/110	S 16 16 11	28	36	5
160/125	S 16 16 12	32	36	5

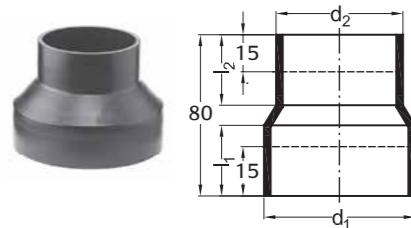
REDUCER CONCENTRIC



d ₁	Code	I ₁	I ₂	Qty
50/40	S 15 05 04	30	30	20
56/40	S 15 56 04	30	30	20
56/50	S 15 56 05	30	30	20
63/40	S 15 06 04	30	30	20
63/50	S 15 06 05	30	30	20
63/56	S 15 06 56	30	30	20
75/40	S 15 07 04	30	30	20
75/50	S 15 07 05	30	30	20
75/56	S 15 07 56	30	30	20
75/63	S 15 07 06	30	30	20
90/40	S 15 09 04	30	30	20
90/50	S 15 09 05	30	28	20
90/56	S 15 09 56	30	30	20
90/63	S 15 09 06	30	30	20
90/75	S 15 09 07	30	28	20

d ₁	Code	I ₁	I ₂	Qty
110/40	S 15 11 04	30	30	20
110/50	S 15 11 05	30	30	20
110/56	S 15 11 56	30	30	20
110/63	S 15 11 06	30	30	20
110/75	S 15 11 07	30	30	20
110/90	S 15 11 09	30	30	20
125/50	S 15 12 05	30	30	20
125/56	S 15 12 56	30	30	5
125/63	S 15 12 06	30	30	5
125/75	S 15 12 07	30	30	5
125/90	S 15 12 09	30	30	1
125/110	S 15 12 11	35	30	1
160/110	S 15 16 11	35	30	1
160/125	S 15 16 12	34	38	1

REDUCER CONCENTRIC

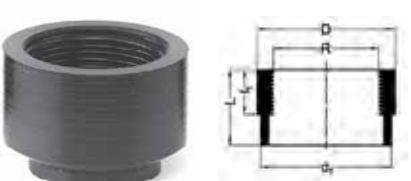


d ₁	Code	I ₁	I ₂	Qty
200/160	S 15 20 16	50	40	20
250/160	S 15 25 16	60	40	20
250/200	S 15 25 20	60	50	20

Butt-weld only

d ₁	Code	I ₁	I ₂	Qty
315/200	S 15 31 20	90	80	20
315/250	S 15 31 25	90	90	20

FEMALE THREAD ADAPTOR, SHORT

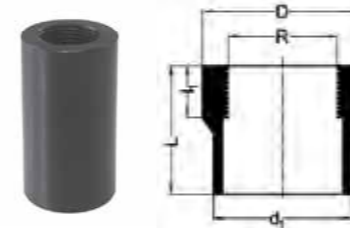


d ₁	Code	R	L	I ₁	D	Qty
40	S 91 04 79	3/4"	38	30	40	20
40	S 91 04 80	1"	38	30	45	20
40	S 91 04 81	1 1/4"	38	30	55	20
50	S 91 05 80	1"	38	30	50	20

Butt-weld only

d ₁	Code	R	L	I ₁	D	Qty
50	S 91 05 81	1 1/4"	38	30	55	20
50	S 91 05 82	1 1/2"	38	30	63	20
63	S 91 06 82	1 1/2"	38	30	63	20
63	S 91 06 83	2"	38	30	75	20

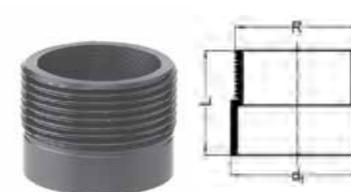
FEMALE THREAD ADAPTOR, LONG



d ₁	Code	R	L	I ₁	D	Qty
40	S 92 04 78	1/2"	55	30	40	20
40	S 92 04 79	3/4"	70	30	40	20
40	S 92 04 80	1"	70	30	45	20
40	S 92 04 81	1 1/4"	70	30	55	20
50	S 92 05 80	1"	70	30	50	20

d ₁	Code	R	L	I ₁	D	Qty
50	S 92 05 81	1 1/4"	70	30	55	20
50	S 92 05 82	1 1/2"	70	30	63	20
63	S 92 06 82	1 1/2"	70	30	63	20
63	S 92 06 83	2"	70	30	75	20
75	S 92 07 84	2 1/2"	70	30	90	20

MALE THREAD ADAPTOR, SHORT

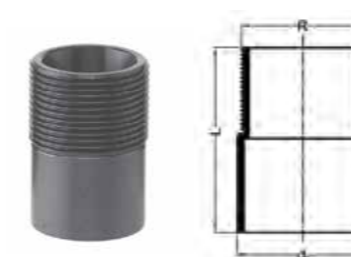


d ₁	Code	R	L	Qty
40	S 96 04 78	1/2"	30	20
40	S 96 04 79	3/4"	30	20
40	S 96 04 80	1"	30	20
40	S 96 04 81	1 1/4"	30	20
50	S 96 05 80	1"	35	20

d ₁	Code	R	L	Qty
50	S 96 05 81	1 1/4"	35	20
50	S 96 05 82	1 1/2"	35	20
63	S 96 06 82	1 1/2"	40	20
63	S 96 06 83	2"	40	20

Butt-weld only

MALE THREAD ADAPTOR, LONG



d ₁	Code	R	L	Qty
40	S 97 04 78	1/2"	60	20
40	S 97 04 79	3/4"	60	20
40	S 97 04 80	1"	60	20
40	S 97 04 81	1 1/4"	60	20
50	S 97 05 80	1"	65	20
50	S 97 05 81	1 1/4"	65	20

d ₁	Code	R	L	Qty
50	S 97 05 82	1 1/2"	65	20
63	S 97 06 82	1 1/2"	70	20
63	S 97 06 83	2"	70	20
75	S 97 07 84	2 1/2"	70	20

CONTRACTION SLEEVE

WITH O-RING: NBR O-RING



d ₁	Code	L	I ₁	d ₂	Qty
40/50	S 55 04 01	210	65	41-44	5
40/70	S 55 04 02	210	65	57-64	5
50/70	S 55 05 03	210	65	57-64	5
50/80	S 55 05 04	210	60	67-74	5
56/75	S 55 56 01	210	70	62-69	5
63/85	S 55 06 03	210	70	75-79	5
75/90	S 55 07 01	210	75	80-84	5
75/100	S 55 07 02	210	75	90-94	5
90/110	S 55 09 02	210	75	94-98	5

d ₁	Code	L	I ₁	d ₂	Qty
110/125	S 55 11 02	210	100	102-111	5
110/135	S 55 11 03	210	100	110-120	5
110/150	S 55 11 04	210	90	115-136	5
125/155	S 55 12 01	210	85	120-140	5
125/170	S 55 12 02	210	85	135-155	5
160/180	S 55 16 02	220	90	155-165	5
160/200	S 55 16 04	220	90	160-180	5
200/225	S 55 20 01	300	150	185-207	1
250/280	S 55 25 01	300	150	236-260	1

STUB FLANGE



d ₁	Code	d ₁	D	L	I ₁	k ₁	Qty	
40	S 47 04 02	*	50	78	50	10	15	5
50	S 47 05 02	*	61	88	50	10	15	5
56	S 47 56 02	*	70	102	60	14	15	5
63	S 47 06 02	*	75	102	50	14	15	5
75	S 47 07 02	*	89	120	50	16	15	5
90	S 47 09 02	*	105	136	80	17	20	5

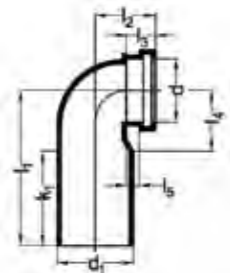
d ₁	Code	d ₁	D	L	I ₁	k ₁	Qty	
110	S 47 11 02		125	158	80	18	30	5
125	S 47 12 02		132	158	80	18	30	1
160	S 47 16 02		175	210	80	18	30	1
200	S 47 20 02	*	232	268	100	18	40	1
250	S 47 25 02	*	285	320	100	20	40	1
315	S 47 31 02	*	335	370	100	20	40	1

* Butt-weld only

HDPE drainage

WC CONNECTOR, 90°

WITH PROTECTION PLUG: SBR SEAL

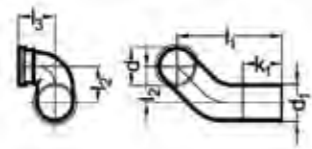


d ₁ /d	Code	I ₁	I ₂	I ₃	I ₄	I ₅	k ₁	Qty
90/90	S 50 09 84	225	76	34	83	17	120	10
110/90	S 50 11 85	225	76	34	95	17	120	10
110/110	S 50 11 82 *	225	75	30	92	19	120	10
110/110	S 50 11 83 *	300	75	30	92	19	195	10

* NBR O-ring

WC CONNECTOR, 90° (HORIZONTAL)

WITH PROTECTION PLUG: SBR SEAL



Left

d ₁ /d	Code	I ₁	I ₂	I ₃	k ₁	Qty
90/90	S 50 09 32	300	100	75	140	5
110/90	S 50 10 32	350	100	75	170	5
110/110	S 50 11 32 *	350	100	75	170	5

* NBR O-ring

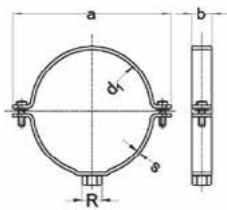
Right

d ₁ /d	Code	I ₁	I ₂	I ₃	k ₁	Qty
90/90	S 50 09 33	300	100	75	140	5
110/90	S 50 10 33	350	100	75	170	5
110/110	S 50 11 33 *	350	100	75	170	5

* NBR O-ring

ANCHOR BRACKET

FOR FIXING TO WALL

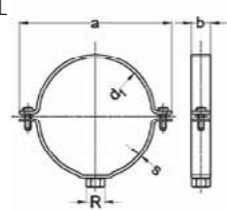


d ₁	Code	a	b	s	R	Qty
40	S 70 04 78	93	30	2.5	"1/2"	1
50	S 70 05 78	104	30	2.5	"1/2"	1
56	S 70 56 78	113	30	2.5	"1/2"	1
63	S 70 06 78	113	30	2.5	"1/2"	1
75	S 70 07 78	126	30	2.5	"1/2"	1
90	S 70 09 78	143	30	2.5	"1/2"	1

d ₁	Code	a	b	s	R	Qty
110	S 70 11 78	161	30	2.5	"1/2"	1
125	S 70 12 78	178	30	2.5	"1/2"	1
160	S 70 16 78	215	30	2.5	"1/2"	1
200	S 70 20 80	283	40	4	"1"	1
250	S 70 25 80	333	40	4	"1"	1
315	S 70 31 80	398	40	4	"1"	1

GUIDE BRACKET

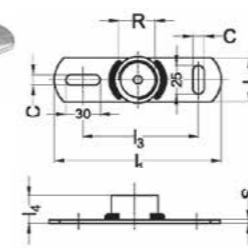
FOR FIXING TO WALL



d ₁	Code	a	b	s	R	Qty
40	S 70 04 10	93	30	2.5	M10	1
50	S 70 05 10	104	30	2.5	M10	1
56	S 70 56 10	113	30	2.5	M10	1
63	S 70 06 10	113	30	2.5	M10	1
75	S 70 07 10	126	30	2.5	M10	1

d ₁	Code	a	b	s	R	Qty
90	S 70 09 10	143	30	2.5	M10	1
110	S 70 11 10	161	30	2.5	M10	1
125	S 70 12 10	178	30	2.5	M10	1
160	S 70 16 10	215	30	2.5	M10	1

MOUNTING PLATE



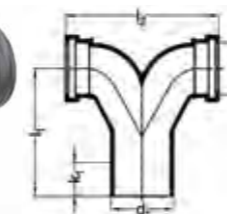
Code	R	I ₁	I ₂	I ₃
S 70 94 78 *	1/2"	145	38	90
S 70 94 10 **	M10	145	38	90
S 70 94 80 **	1"	145	38	90

* for anchor bracket ** for guide bracket

I ₄	S	C	Qty
25	4	8,5	1
14	4	8,5	1
25	4	8,5	1

DOUBLE WC CONNECTOR, 90° (VERTICAL)

WITH PROTECTION PLUG



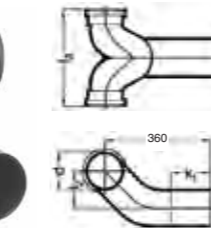
d ₁ /d	Code	I ₁	I ₂	k ₂	Qty
110/90	S 50 09 34 *	225	275	80	5

* EPDM O-ring ** NBR O-ring

d ₁ /d	Code	I ₁	I ₂	k ₂	Qty
110/110	S 50 11 34 **	185	270	60	5

DOUBLE WC CONNECTOR, 90° (HORIZONTAL)

SBR SEAL



d ₁ /d	Code	I ₂	I ₃	k ₁	Qty
110/90	S 50 09 35 *	100	275	200	1

* EPDM O-ring ** NBR O-ring

d ₁ /d	Code	I ₁	I ₂	k ₂	Qty
110/110	S 50 11 35 **	100	270	200	1

SOCKET FOR WC CONNECTOR



d ₁	Code	d	D	L	I ₁	Qty
90	S 50 09 51	90	113	49	38	10
110	S 50 11 51	90	111	31	20	10

Butt-weld only
Art. Nr. 501151 = EPDM O-ring. Art. Nr. 501171 = NBR O-ring.

d ₁	Code	d	D	L	I ₁	Qty
110	S 50 11 71	110	130	45	28	10

PROTECTION PLUG



d ₁	Code	D	D ₁	D ₂	I ₁	Qty
90	S 43 09 19	109	90	103	27.0	50

d ₁	Code	D	D ₁	D ₂	I ₁	Qty
110	S 43 11 19	130	105	119	23.5	50

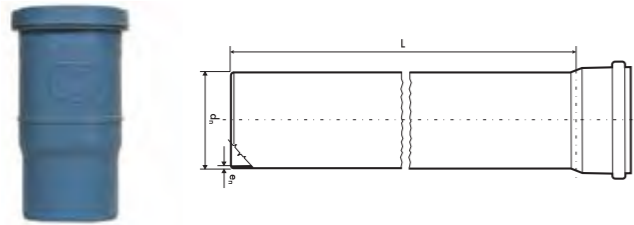
PIPE SCRAPER MANUAL



Code	Qty
S 41 96 00	1

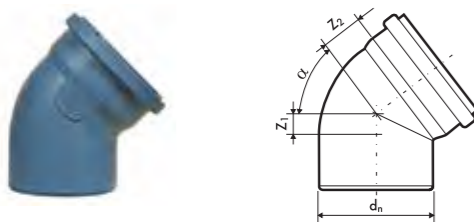
dBlue acoustic drainage

PIPE WITH SOCKET



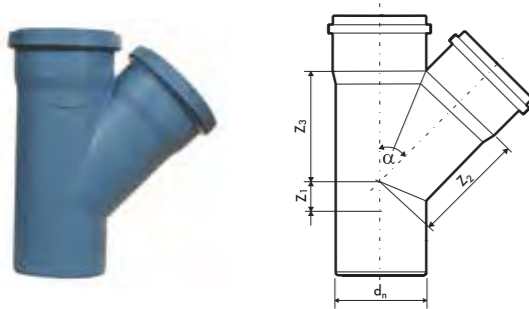
dn	Code	en	L	Qty
40	PPA-040-018-300-D	1.8	3000	10
50	PPA-050-018-300-D	1.8	3000	10
110	PPA-110-034-300-D	3.4	3000	10
160	PPA-160-049-300-D	4.9	3000	28

BEND



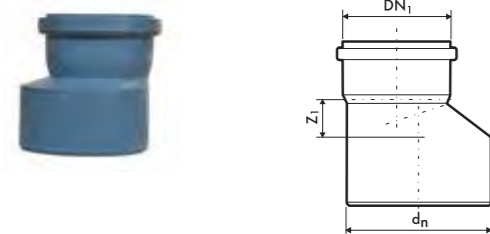
dn	Code	α°	z ₁	z ₂	Qty
40	VKL-040-000-15D	15°	4	7	20
50	VKL-050-000-15D	15°	5	9	20
110	VKL-110-000-15D	15°	9	14	8
40	VKL-040-000-30D	30°	7	10	20
50	VKL-050-000-30D	30°	9	12	20
110	VKL-110-000-30D	30°	17	22	8
40	VKL-040-000-45D	45°	10	14	20
50	VKL-050-000-45D	45°	12	16	20
110	VKL-110-000-45D	45°	25	29	14
160	VKL-160-000-45D	45°	36	42	6
40	VKL-040-000-67D	67.5°	-	-	20
50	VKL-050-000-67D	67.5°	20	23	20
110	VKL-110-000-67D	67.5°	40	44	14
40	VKL-040-000-90D	90°	23	26	20
50	VKL-050-000-90D	90°	28	31	20
110	VKL-110-000-90D	90°	57	61	14
160	VKL-160-000-90D	90°	83	89	4

BEND



dn	Code	α°	z ₁	z ₂	z ₃	Qty
40/40	VTR-040-040-45D	45°	10	49	49	20
50/40	VTR-050-040-45D	45°	12	61	61	20
50/50	VTR-050-050-45D	45°	12	61	61	20
110/40	VTR-110-040-45D	45°	-	104	91	6
110/50	VTR-110-050-45D	45°	-	104	91	6
110/110	VTR-110-110-45D	45°	25	134	134	7
160/110	VTR-160-110-45D	45°	1	179	173	3
160/160	VTR-160-160-45D	45°	22	210	210	2
40/40	VTR-040-040-90D	90°	23	25	25	20
50/40	VTR-050-040-90D	90°	23	25	25	20
50/50	VTR-050-050-90D	90°	28	30	30	20
110/40	VTR-110-040-90D	90°	28	60	32	6
110/50	VTR-110-050-90D	90°	28	60	32	6
110/110	VTR-110-110-90D	90°	57	62	62	7
160/110	PTR-160-110-87D	90°	58	92	64	3
160/160	VTR-160-160-90D	90°	83	92	92	2

REDUCER



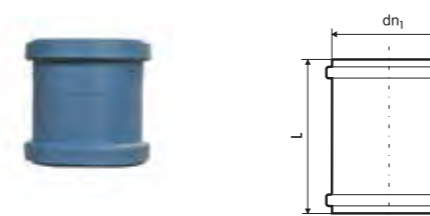
dn DN ₁	Code	z ₁	Qty
50/40	VRD-050-040-00D	12	15
110/50	VRD-110-050-00D	40	17
160/110	VRD-160-110-00D	14	15

DOUBLE SOCKET COUPLING



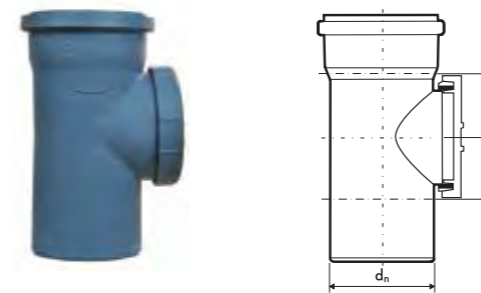
dn ₁	Code	L	Qty
40	VMD-040-000-00D	125	20
50	VMD-050-000-00D	105	20
110	VMD-110-000-00D	128	6
160	VMD-160-000-00D	179	6

SLIP COUPLING



dn ₁	Code	L	Qty
40	VMP-040-000-00D	137	20
50	VMP-050-000-00D	105	20
110	VMP-110-000-00D	128	6
160	VMP-160-000-00D	179	6

ACCESS PIPE



dn ₁	Code	z ₁	z ₂	Qty
50	VCZ-050-000-00D	28	30	10
110	VCZ-110-000-00D	58	62	6
160	VCZ-160-000-00D	49	68	6

SOCKET PLUG



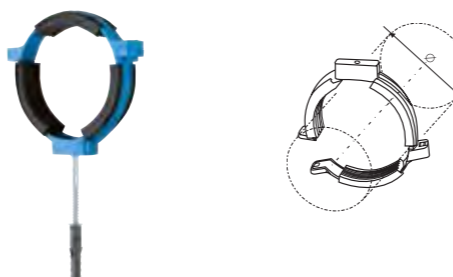
dn ₁	Code	L	Qty
40	VKK-040-000-00D	39	20
50	VKK-050-000-00D	39	20
110	VKK-110-000-00D	46	20
160	VKK-160-000-00D	48	10

PIPE CLIP



Ø	Code	Qty
40	POB-040-000-000	10

ACOUSTIC PIPE CLIP



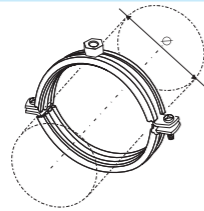
Ø	Code	Qty
50	POB-050-000-000	10
110	POB-110-0M8-000	5

*Supplied with fixing screw and rawl plug, which can be removed for suspended pipework

dBlue acoustic drainage

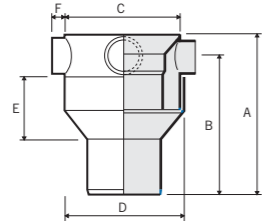
WC connectors

ACOUSTIC METAL PIPE CLIP



Ø	Code	Qty
160	POB-160-000-000*	1

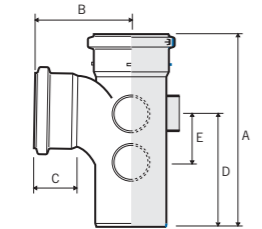
COLLAR BOSS



dn	Code	Angle	A	B	C	D	E	F	Qty
110	SCB41BL*	87.5°	245	210	178	186	100	20	1

Solvent socket/spigot connection for PVCu/PVCu.
Spigot tail can be inserted into push-fit connection.

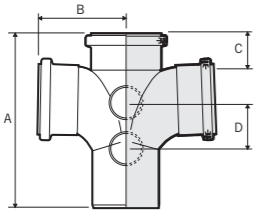
FIVE BOSS BRANCH



dn	Code	Angle	A	B	C	D	E	Qty
110	SY405BL*	87.5°	300	150	60	175	76	4

Push-fit sockets/spigot

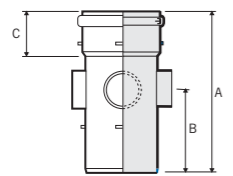
DOUBLE BRANCH



dn	Code	Angle	A	B	C	D	Qty
110	SY404BL*	87.5°	289	141	54	76	4

Push-fit sockets/spigot

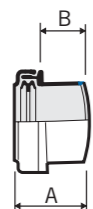
BOSS PIPE



dn	Code	Angle	A	B	C	Qty
110	SW40BL*	87.5°	300	150	60	4

Push-fit sockets/spigot

BOSS CONNECTOR



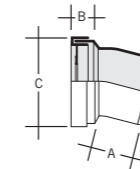
dn	Code	Angle	A	B	Qty
40	SA421BL*	87.5°	43	21	40
50	SA420BL*	87.5°	74	45	40

For integrity, all boss adaptors must be solvent welded into boss upstands.

Size mm	Code	Angle	A	B	Colour	Qty
32	SA411	87½°	43	21	W B G	50
40	SA421	87½°	43	21	W B G	40
50	SA420	87½°	66	45	B G	40

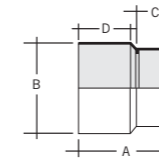
For use with ABS & PVCu waste systems

STRAIGHT CONNECTORS



Size mm	Code	Angle	A	B	C	Colour	Qty
110	SGS40	14°	63	50	134	W	4

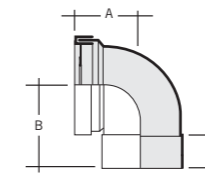
Spigot



Size mm	Code	Angle	A	B	C	D	Colour	Qty
110	SGS41W*	14°	139	134	53	80	W	20

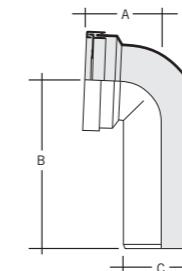
Solvent socket. Pan socket to be trimmed to suit WC spigot length

BENT CONNECTORS



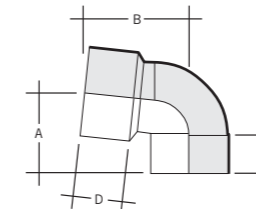
Size mm	Code	Angle	A	B	C	Colour	Qty
110	ST40	90°	106	125	51	W	4

Solvent socket



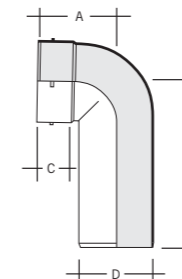
Size mm	Code	Angle	A	B	C	Colour	Qty
110	ST41W	90°	106	240	210	W	4

Long spigot



Size mm	Code	Angle	A	B	C	D	Colour	Qty
110	STS41W*	85°	104	156	53	80	W	4

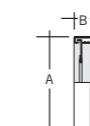
Solvent socket. Pan socket to be trimmed to suit WC spigot length



Size mm	Code	Angle	A	B	C	D	Colour	Qty
110	SBS40W	90°	114	240	48	110	W	4

Long spigot/ solvent socket

WC SEAL AND CAP



83 - 114mm outlet

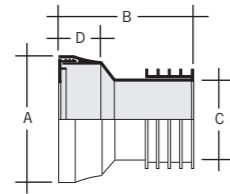
Size mm	Code	A	B	Colour	Qty
	SA323W	141	24		70

For use with SGS41 and STS41

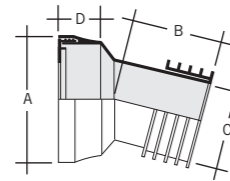
Universal push-fit WC connectors

WC manifold system

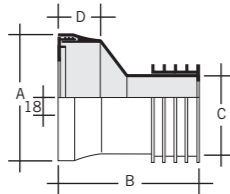
STRAIGHT CONNECTORS



Size mm	Code	Angle	A	B	C	D	Colour	Qty
100	SWC11		132	110	81	46	W	25

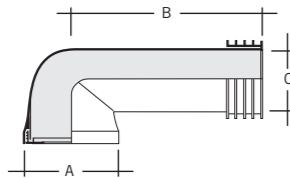


Size mm	Code	Angle	A	B	C	D	Colour	Qty
100	SWCB14	14°	132	61	81	46	W	20



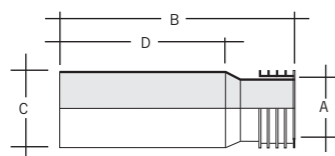
Size mm	Code	Angle	A	B	C	D	Colour	Qty
100	SWC22	22°	132	115	81	46	W	25

LONG BENT CONNECTOR



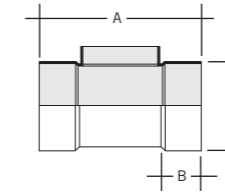
Size mm	Code	Angle	A	B	C	Colour	Qty
100	SWCB90	90°	132	235	81	W	10

EXTENSION PIECE



Size mm	Code	A	B	C	D	Colour	Qty
100	SWCE33	81	300	116	226	W	12

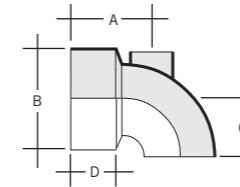
BRANCH



Size mm	Code	A	B	C	Colour	Qty
110x90	SM41W	214	50	116	W	10

Solvent sockets

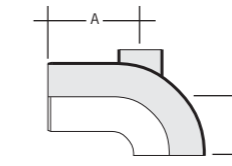
ADJUSTABLE WC BEND



Size mm	Code	Angle	A	B	C	D	Colour	Qty
90	SM42W*	50-90°	108	134	75	60	W	15

50mm boss upstand
Pan socket to be trimmed to suit WC spigot length

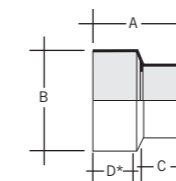
ADJUSTABLE SPIGOT BEND



Size mm	Code	Angle	A	B	Colour	Qty
90	SM43W	50-90°	119	75	W	15

50mm boss upstand

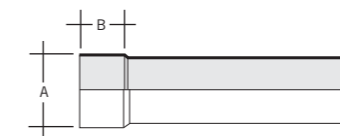
WC CONNECTOR



Size mm	Code	A	B	C	D	Colour	Qty
90	SM44W*	117	134	46	80	W	30

50mm boss upstand
Pan socket to be trimmed to suit WC spigot length

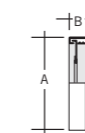
EXTENSION PIPE



Size mm	Code	A	B	Colour	Qty
90	SM45W	96	46	W	50

300mm
For use with SM43 only

WC SEAL AND CAP



83-114mm outlet

Size mm	Code	A	B	Colour	Qty
90	SA323W	141	24	W	70

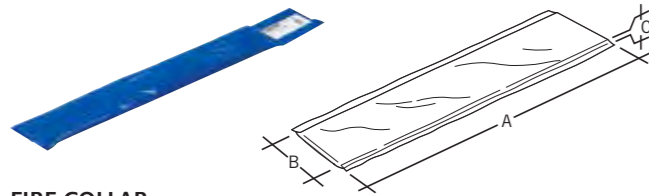
For use with SM42 and SM44

*When fitted to short WC pan spigots, pan socket should be trimmed to suit before SA323W (not supplied) is fitted. Push-fit WC connectors are manufactured to BS 5627. CAD drawing available to download from marleypd.co.uk

*When fitted to short WC pan spigots, pan socket should be trimmed to suit before SA323W (not supplied) is fitted.

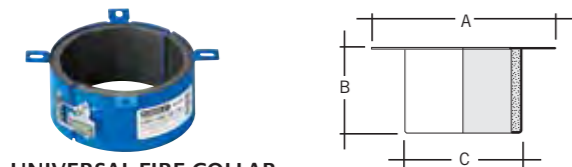
Fire protection

PIPE WRAP



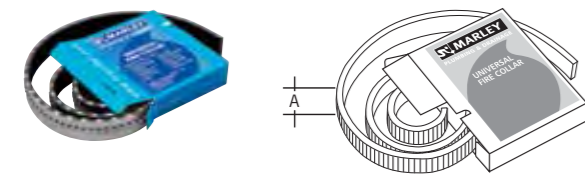
Size mm	Code	A	B	C	Colour	Qty
110	SFW44	395	100	13		200

FIRE COLLAR



Size mm	Code	A	B	C	Colour	Qty
110	SFC44	165	43	148		1

UNIVERSAL FIRE COLLAR



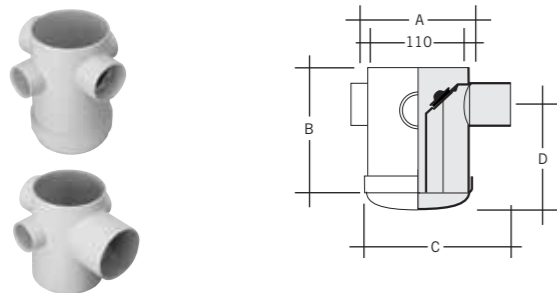
Size mm	Code	A	Colour	Qty
2200	UFC1	50		8

Cut to suit 55mm – 160mm (3x160mm or 5x110mm or 6x82mm or 8x50mm)

Marley Fire Protection Products provide up to 4 hours resistance. Suitable for use with all Marley plastic drainage systems

PVCu floor outlets

TRAPPED FLOOR GULLIES



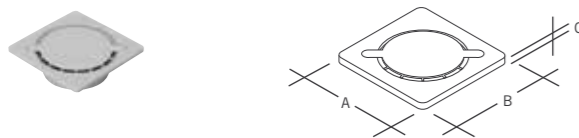
Size mm	Code	A	B	C	D	Colour	Qty
50	SFG42AS	117	164	145	116	G	8

Solvent outlet. 90mm adjustable water seal

Size mm	Code	A	B	C	D	Colour	Qty
82	SFG43AS	117	164	175	100	G	8

Solvent outlet. 75mm adjustable water seal

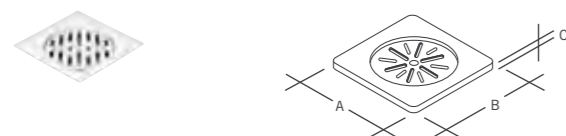
PVC FLOOR TILE



Code	A	B	C	Colour	Qty
SGG3	150	150	7	G	10

For use with SFG42AS and SFG43AS only

STAINLESS STEEL TILE GRATE AND COVER

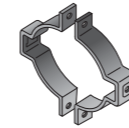


Code	A	B	C	Colour	Qty
150x150 SGG4	150	150	7	NU	40

Grade 304 stainless steel

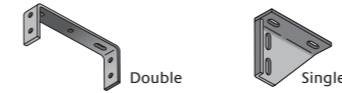
Pipe support systems

TWO PIECE PIPE BRACKET



Size mm	Code	Colour	Qty
110	JB42	NU	50
160	JB62	NU	50

BASE PLATE



Size mm	Code	Colour	Qty	
110	JBP42	Double support	NU	1
160	JBP62	Double support	NU	50
	JDP1	Single support	NU	50

CHANNEL STRIP



Size mm	Code	Colour	Qty	
2000	JCS2	Strip	NU	50
	JCA1	Angle	NU	10

BARREL CLIP COLLAR



Code	Colour	Qty
SC621	NU	25

1m PVC strip when cut to length. Converts pipe bracket to pipe size (3x110mm or 2x160mm)

NUTS AND BOLTS



Size mm	Code	Colour	Qty
20x6	RNB11	NU	1

Ancillary items

SOLVENT CEMENT



Tub 250ml	Code	Qty
	KS10	20

To BS EN 14680

SILICONE LUBRICANT



Tube with sponge applicator 50g	Code	Qty
	SZ50	10

Bottle 100g	Code	Qty
	SZ100	50

Aerosol* 400ml	Code	Qty
	SZ400	12

Tub 500g	Code	Qty
	SZ500	24

Water Research Centre Approved

SPARE RING SEALS



'T' ring	Size mm	Code	Qty
	82	SR82T	5
	110	SR110T	5
	160	SR160T	5

To BS EN 681/1

British & European Standards

BS EN 1329-1: 2014

Plastics piping systems for soil and waste discharge (low and high temperature) within the building structure – PVCu.

BS EN 1451-1: 2000

Plastics piping systems for soil and waste discharge (low and high temperature) within the building structure – polypropylene.

BS EN 1519-1: 2000

Plastics piping systems for soil and waste discharge (low and high temperature) within the building structure – polyethylene.

BS 4514: 2001

Specification for PVCu soil and ventilating pipes, fittings and accessories.

BS EN 1566-1: 2000

Specification for thermoplastics waste pipe and fittings.

BS 5255: 1989

Specification for thermoplastics waste pipe and fittings.

BS EN 1455-1: 2000

Plastics piping systems for soil and waste (low and high temperature) within the building structure – ABS.

BS 5627: 1984

Specification for plastics connectors for use with horizontal outlet vitreous china WC pans.

BS EN 14680: 2006

Specification for adhesives for non-pressure thermoplastics pipe systems.

BS EN 681-1: 1996

Elastomeric seals. Material requirements for pipe joint seals used in water and drainage applications. Part 1 vulcanised rubber.

BS EN ISO 9001: 2008

Quality systems. Model for Quality Assurance in Design, Development, Production, Installation and Servicing.

BS EN ISO 14001: 2004

Environmental management systems. Requirements with guidance for use.

Accreditations



Certificate No. 06/4325



BS EN 1329-1 : 2013
BS 4514 : 2001
BS EN 1566-1: 2000
BS 5255: 1989
BS EN 1455-1: 2000
BS EN 1451-1: 2000
BS EN 1519-1: 2000



BS EN ISO 9001: 2008
BS EN ISO 14001: 2004

Material and manufacture

Marley Plumbing & Drainage pipes and fittings for domestic sanitary pipework systems are manufactured from different plastics materials including PVCu, PVCc, ABS and Polypropylene.

The table right details the important dimensions and weights of each of the systems together with the relevant British and European Standard. All pipes are manufactured using a continuous extrusion process and fittings are produced by high-pressure injection moulding.

Chemical and temperature resistance

Most plastics used for sanitary pipework are highly resistant to those chemicals normally found in domestic waste water and sewerage systems. Applications where chemicals and higher temperature discharges are likely to occur, the Marley Akatherm HDPE drainage range may be more suitable.

Generally the maximum working temperature of Marley soil and waste systems when subjected to continuous flow is 70°C and 75°C respectively. Higher intermittent discharges of up to 95°C may be accommodated provided the period of discharge does not exceed two minutes duration.

Alternatively, reference can be made to ISO publications TR10358 & TR7620 which provide comprehensive information on chemical and temperature resistance of plastics and rubber materials.

Dimensions and weights

Pipe Material Standard	BS nominal size (mm/ inch)	Min	Max	Wall thickness (mm) Min	Weight kg/metre
Soil PVCu					
BS 4514	82	82.4	82.8	3.20	1.30
BS EN 1329	110	110.0	110.3	3.20	1.70
	160	160.0	160.4	3.20	2.50
Waste					
PVC-c	36/1¼	36.10	36.50	1.80	0.33
BS EN 1566	43/1½	42.70	43.10	1.80	0.41
	55/2	55.70	56.10	1.80	0.57
Waste					
ABS	36/1¼	36.10	36.50	1.80	0.20
BS EN 1455-1	43/1½	42.70	43.10	1.80	0.26
	55/2	55.70	56.10	1.80	0.35
Waste					
Polypropylene	34/1¼	34.40	34.80	1.80	0.21
BS EN 1451	41/1½	40.80	41.20	1.80	0.26
Overflow					
PVCu	21.5¾	21.55	21.70	1.10	0.11
BS EN 806-4					



Marley HDPE

Marley Akatherm HDPE is a drainage system which offers an alternative solution to cast iron. It is particularly suited for commercial applications or where a product with high impact or abrasion resistance is required, such as hospitals, hotels, schools, as well as residential buildings. HDPE will also cope with temperature variations of -40°C to 100°C making it ideal for external as well as internal installations.



Marley dBlue

An acoustic soil and waste range with a triple layered pipe providing quick, hygienic removal of sanitary waste water. The noise generated by the flow of water is dramatically reduced – making it perfect for multi-occupancy apartment blocks and high specification developments.



Marley waste systems

A wide range of PVC-u, ABS and polypropylene waste ranges from 32mm to 50mm and in a variety of colours. Available with polypropylene solvent weld and push fit jointing.



Marley rainwater

Five gutter profiles and three downpipe options provide a rainwater solution for any application. Advanced Life⁴ technology on four of the key profiles, coupled with the benefits of the Easyclip and notching capability combine to make the Marley rainwater range the most comprehensive available.



Marley underground systems

The Marley Plumbing & Drainage range of underground systems include the solid wall range, predominately for round the house drainage and Quantum structured wall range for sewer and highway drainage applications.



Marley sustainable drainage

The Waterloc250 cell is ideal for use in either an underground infiltration or attenuation system. 96% of the cell volume is available to store water, minimising the extent of excavation required for the installation. The range includes Flowloc, a vortex control device, which controls the rate at which water is discharged to a surface water drain or water course.



Marley Equator

Equator is ideal for hot & cold water or central heating installations. A tamperproof fitting with a unique grip release mechanism ensuring that the system can only be disassembled through the use of a special de-mounting tool. Equator has been designed to meet the requirements of BS 7291: Parts 1 & 3; Class S. The complete Equator system is backed by a 30 year guarantee.



Alutec

Alutec offer modern and traditional aluminium rainwater profiles, providing solutions for any type of building. Aluminium has high visual appeal and durability, lasting for 50 years or more. The product portfolio includes Evolve; easy to install, low cost gutter systems in four profiles. The rainwater ranges are complemented by aluminium soffit and fascia systems and roof & floor outlets.



Multikwik

The Multikwik brand is known and trusted by plumbers for its sanitary frames, cisterns, traps, compression waste systems and market leading range of pan connectors. Complementing the Marley range it provides an excellent solution to modern bathroom design with a wide choice of product options.



marleypd.co.uk

For general enquiries and details of your nearest stockist please call the customer services department:

Tel: 01622 852585

Email: customerservice@marleypd.co.uk

To place an order

For delivery to **England & Wales**

Email: orders.lenham@marleypd.co.uk

Fax: 01622 851111

For delivery to **Scotland**

Email: orders.uddingston@marleypd.co.uk

Fax: 01698 810307

For all estimate requests

Email: estimates@marleypd.co.uk

For Technical advice please call

01622 852695

Head Office

Lenham, Maidstone

Kent ME17 2DE

Tel: 01622 858888

Fax: 01622 858725

Email: marketing@marleypd.co.uk

Scotland

Birkenshaw Industrial Estate

Uddingston, Glasgow G71 5PA

Tel: 01698 815231

Fax: 01698 810307

Export Division

Lenham, Maidstone

Kent ME17 2DE England

Tel: +44 (0)1622 858888

Fax: +44 (0)1622 850778

Email: export@marleypd.co.uk

an *OAliaxis* company

March 2014