

inta

Electronic Basin Mounted Tap

IR180CP Battery Operated

Installation and Maintenance Instructions



inta

Intatec Ltd
Airfield Industrial Estate
Hixon
Staffordshire
ST18 0PF

In this procedure document we have endeavoured to make the information as accurate as possible.

We cannot accept any responsibility should it be found that in any respect the information is inaccurate or incomplete or becomes so as a result of further developments or otherwise.

© Intatec Ltd 2011

Tel: 01889 272180
Fax: 01889 272181
email: sales@intatec.co.uk
web: www.intatec.co.uk

Technical Data

Power supply:	6V lithium battery model CRP2
Recommended water pressure:	0.5 to 8.0 bar (7.0 to 116 psi)
	With water pressure in excess of 8 bar use with a pressure reducing valve.
Water temperature range:	5 to 70° C
Water flow:	8 l/min @ 3 bar (controlled via flow regulator)

Check Contents

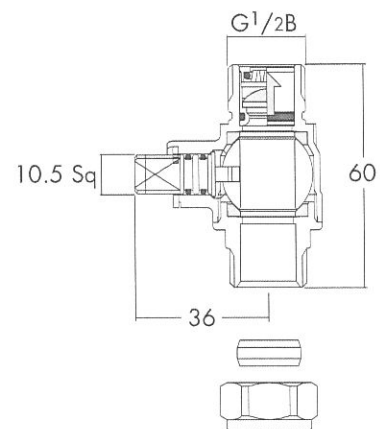
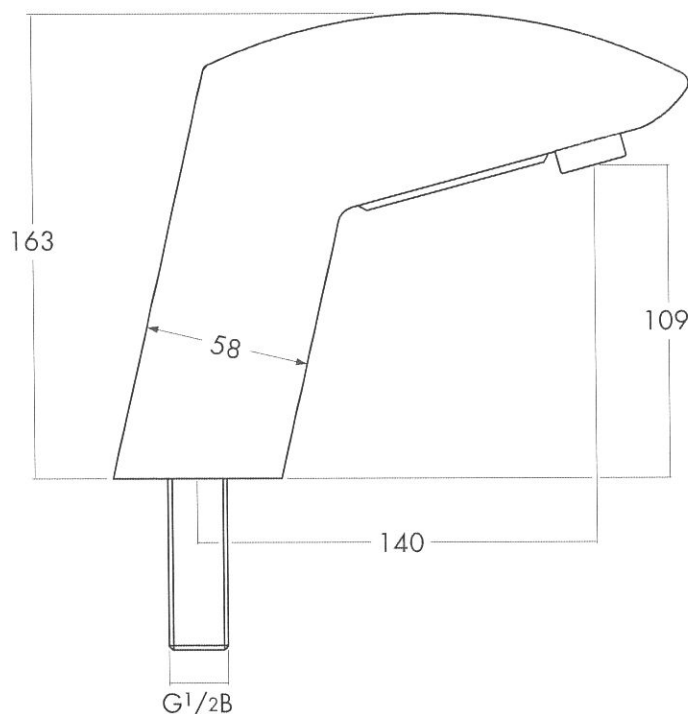
Before commencing remove all components from packaging and check each component with the contents list.

Ensure all parts are present, before discarding any packaging. If any parts are missing, do not attempt to install your Inta electronic tap until the missing parts have been obtained.

IR180CP Tap

Qty Components

- 1 x Tap complete with 6V battery
- 1 x Fitting kit
- 1 x stainless steel hose
- 1 x 15mm x 1/2" ball valve complete with check valve and filter



Pre-installation Information

Warning

Do not install the tap facing a mirror or any other electronic system operated by an infra red sensor.

To prevent reflection problems, it is recommended to keep a minimum distance of 1.5m between the tap and other objects.

Preparation for installation

Flush the water supply pipes thoroughly prior to installation. Do not allow debris, PTFE tape or any metal particles to enter the tap.

Turn off the water supply.

Important - All plumbing is to be installed in accordance with applicable codes and regulations.

Installation

WARNING: Failure to observe these installation instructions will invalidate the warranty. Failure to fit the filter on the supply pipe can damage the solenoid valve, seriously jeopardising the operation of the tap.

Step 1 - Preparation for mounting the tap

1. Shut off the water supply.
2. Fit the 'O' ring from the fixing kit into the base of the tap.

Step 2 - Installing the tap

1. Position the tap with the 'O' ring located in the base into the hole in the basin or water proof work surface. Ensure the 'O' ring is located correctly.
2. Slide the gasket over the threaded inlet of the tap
3. Secure the tap to the basin or work surface using the hexagon nut and disk.
4. Connect to the stainless steel flexible hose to the 15mm x 1/2" ball valve complete with check valve and filters.
5. Attach the stainless steel flexible hose to the G^{1/2} threaded inlet and tighten to make a water tight joint.

Step 3 - Connecting the water supply

1. Fit the 15mm x 1/2" ball valve assembly to 15mm copper supply pipe and make a water tight joint.
2. Turn on the water supply and check all joints for leakage.
3. Isolate via the service ball valve and tighten or remake joints if leakage occurs.

Auto Programme

Once the tap has been fitted to the basin commence the auto programme sequence.

1. Turn on the water supply at the ball valve **BEFORE** removing the adhesive tape from the sensor window.
2. Water will begin to flow and the auto programming phase will begin as the sensor determines the parameters of the surrounding environment, and sets the position and intensity of the water jet.
3. During this operation it is recommended to supply water at the maximum pressure possible by turning off any other taps or water outlets on the same supply circuit.
4. During this phase the LED in the sensor window will illuminate rhythmically in the following sequence:
 - 11 times slowly
 - 5 times quickly
 - 2 times slowly
5. The tap is now ready for use.

Safety Device

To prevent flooding of the premises following misuse or an act of vandalism to the sensor the electronic controller is fitted with a safety device which turns off the water flow after approximately two minutes.

Aftercare

In order to keep the tap operating efficiently and maintain its appearance it is necessary to periodically carry out a number of simple maintenance operations including:

The high quality chrome finish and the darkened plastic window (1) which protects the sensor, must be kept clean to maintain correct operation, both surfaces should be treated with care.

An occasional wipe with a mild washing-up liquid on a soft damp cloth followed by a thorough rinse and wipe dry with a soft clean cloth is all that is required.

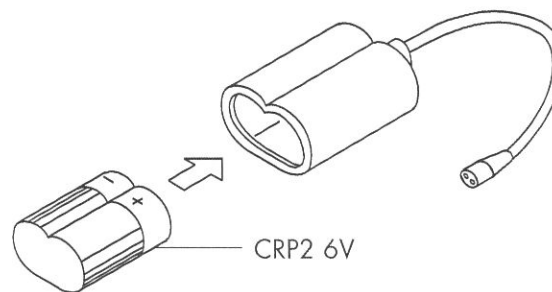
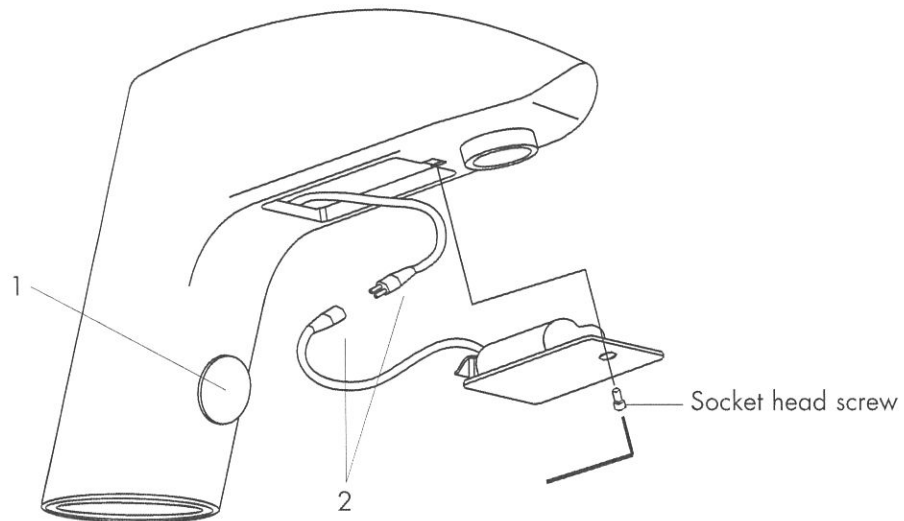
Do not use an abrasive or chemical household cleaner as this may cause damage to the surface.

WARNING: Turn off the water supply at the ball valve before removing the filter.

Some supplies can contain particles and impurities which could damage the solenoid valve.

As part of package, a water supply filter is included which must be kept clean to ensure maximum water flow.

Clean the filter by washing thoroughly using running water.



Battery Replacement

When the battery is ready for changing the LED will flash continuously and the tap continues to operate normally.

When the LED remains illuminated the battery is exhausted and must be replaced.

To replace the battery

1. Turn off the water supply at the ball valve.
2. Unscrew the socket head screw and pull out the cover plate which contains the battery until connector (2) is easily accessible.
3. Pull apart the two halves of the connector to disconnect the battery.
4. Remove the battery from the rubber housing and replace with a new one of the same type - model CRP2 - 6 Volt.
5. Re-connect the two parts of connector (2) and refit the cover plate to the tap and tighten the socket head screw.
6. Turn on the water supply at the ball valve and cover the sensor window with a finger until the water turns off automatically.
7. Remove your finger and the tap enters the auto programme sequence detailed earlier.
8. The tap is now ready for use.

Trouble Shooting

DEFECT	CAUSE	SOLUTION
No water flow from tap	Battery has lost power The LED is continuously illuminated	Replace the battery
	Battery has lost power or electrical problem (LED sensor does not illuminate or the sensor window is dirty)	Clean the sensor window Disconnect and re-connect the battery to repeat the auto programme Sensor damage - contact Inta Ltd
	Water supply is turned off - ball isolating valve to tap is turned off	Check water supply Turn on supply at ball isolating valve
	Filter is blocked	Clean filter
	Solenoid valve damaged (The ball valve is open, the filter is not blocked, the LED flashes when hands approach)	Contact Inta Ltd
The water flows continuously	Dark coloured object in front of sensor	Do not use dark coloured objects move object away from sensor
	Sensor is dirty	Clean the sensor
	Light reflection on the sensor	Remove the reflective source
	Electronic problem	Disconnect and re-connect the battery and repeat the auto programme sequence Contact Inta Ltd

Warranty

Limited Warranty

This product is covered by a limited warranty for one year from the date of purchase.

During this period Intatec Ltd undertakes, at its option, to repair or replace any faults caused by defective material or manufacturing that may arise (see Intatec Warranty).

The warranty does not cover damage caused by;

Abnormal or improper use.

Incorrect installation or water system problems.

Normal wear or negligence in maintenance and in use.

Acts of vandalism

Contact with abrasives, corrosive chemicals or unsuitable cleaning agents or instruments.

Intatec Limited, Airfield Industrial Estate, Hixon, Stafford, ST18 0PF
Tel: 01889 272180 Fax: 01889272181 Email: sales@intatec.co.uk