

PRODUCT CATALOGUE



 **SALUS**[®]
C O N T R O L S

CONTROL SOLUTIONS THAT DEFINE THE MARKET

About SALUS

SALUS Controls is an engineering design and brand distribution company providing energy control solutions to professional market channels throughout Europe. By understanding the unique complexity of each market where we do business, we develop solutions that define the market by delivering product innovation, cost savings, logistical efficiencies and speed-to-market.

SALUS Controls is a member of Computime Group Ltd, Hong Kong, widely regarded for its electronic control technologies, research & design capabilities and manufacturing services. It occupies a unique niche in appliance, heating, air conditioning, smart energy and building automation sectors, serving customers in commercial, industrial and consumer markets throughout Asia, North America and Europe since 1974.

Our talented team at SALUS Controls works diligently to deliver product solutions at the lowest cost of ownership, enabling our customers to be more profitable, honour their commitments and stand out in their markets.

Our actions define us. We believe in building strong, enduring relationships with our team members, customers, suppliers and communities.

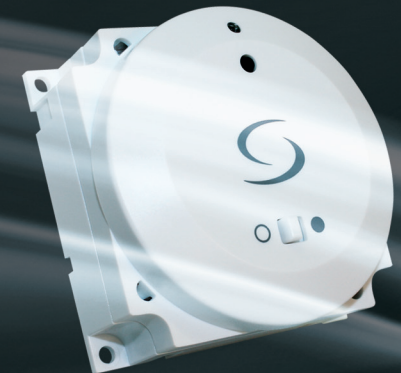
SALUS Controls builds solid partnerships and provides dependable solutions to enable our customers' success. We have a performance culture which seeks to anticipate our customers' requirements with quickness and flexibility. Most importantly, we offer our customers fast service and exceptional professional support.

Chairman's Promise

- To deliver innovation that defines the market and makes a difference for our company and the world.
- To act ethically, execute with integrity and ensure trust and personal responsibility in all relationships.
- To ensure our business always considers its social and environmental responsibility.
- To demonstrate commitment to each customer and their business by consistently delivering on our promises.



SALUS UK - Head Office





Throughout this catalogue, products are displayed using the following key:

- 24V** Available in 24V AC
- 230V** Available in 230V AC
- VOLT FREE** Volt Free Switching
- TRIAC** Triac
- PLUG-IN** Plug-in controller
- RF** Radio Frequency Controller

Index

| Product | Page |
|---|------|
| iT500 & iT500BM Internet Thermostat | 04 |
| Magnetic Filter & A Rated Pumps | 05 |
| Digital Programmable Thermostats | 06 |
| Digital & Electronic Thermostats | 07 |
| Digital RF Thermostats | 08 |
| Digital Programmers & Timers | 10 |
| Motorised Valves & Cylinder Thermostats | 11 |
| Underfloor Thermostats | 12 |
| Underfloor Wiring Centres & Actuators | 15 |
| Programmable TRV's & Accessories | 16 |
| 5x5 Thermostats & Receivers | 17 |



Available on the iPhone
 App Store

Google play



Introducing the iT500 internet thermostat... Control your heating and hot water from anywhere via your Smartphone or laptop.

- Access and control your heating and hot water via the internet
- Compatible with your PC or Smartphone
- Your PC and Smartphone connects to the system using your existing broadband connection
- The internal system uses 868 MHz for robust communication
- System is secure and energy efficient
- The system is wireless so it's easy to install
- 3 system configurations



iT500 Available on the iPhone **Google play**

iT500

Internet Enabled Thermostat
iT500 Internet Enabled Programmable Thermostat with options for hot water control and two zone heating.

- FEATURES**
- Internet control via PC or Smartphone
 - Local control
 - Wall or surface mount thermostat
 - Touch controls on thermostat
 - Frequency 868 MHz
 - Heat/Cool
 - 2 x Volt Free Outputs
 - Optional hot water control

Optional two zone heating with the addition of iT300* sensor (sold separately)



iT300 Sensor*

Thermostat iT500TX

| | |
|--------|------------------|
| Supply | 2 x AA Batteries |
| Scale | 5-35 Deg C |

Gateway iTG500

| | |
|-------------------------|-----------------------|
| Supply | 5V (adaptor included) |
| Ethernet cable included | |

Receiver iT500RX

| | |
|---------------|------------------|
| Supply | 230Vac 50Hz |
| Switch Rating | 5 (3) A SPDT x 2 |
| Output | 0-230V |

Sensor iT300

| | |
|--------|------------------|
| Supply | 2x AAA Batteries |
|--------|------------------|

1 One central heating zone only.



2 Two central heating zones.
(iT300* remote sensor required for second zone)



3 One central heating zone plus hot water.



iT500BM

For combination boilers only.



For one central heating zone only.

Can be used with any of these 3 receivers...

RXVBC605
Plug-in Receiver



FEATURES

- Plug in connections
- LED status indication
- Manual override control
- Compatible with Vaillant boilers
- Frequency 868 MHz (30 metre range)



| | |
|----------------------|-----------------|
| Supply: | 24V dc |
| Output: | 24V dc |
| Boiler control size: | W-145 H-98 D-20 |

RXWBC605
Plug-in Receiver



FEATURES

- Plug in connections
- LED status indication
- Manual override control
- Compatible with Bosch boilers
- Frequency 868 MHz (30 metre range)



| | |
|----------------------|------------------|
| Supply: | 24V dc |
| Output: | 24V dc |
| Boiler control size: | W-130 H-108 D-25 |

RXBC605
Plug-in Receiver



FEATURES

- Plug in connections
- Manual override control
- LED status indication
- Frequency 868 MHz (30 metre range)



| | |
|----------------------|----------------|
| Supply: | 230Vac 50Hz |
| Rating Max: | 5 (1) A SPST |
| Output: | 0 - 230V |
| Boiler control size: | W-58 H-58 D-30 |

Internal boiler connections

| | |
|---|--------------------|
| 1 | Neutral connection |
| 2 | Live connection |
| 3 | Live in |
| 4 | Switched output |



NEW

MD22A - MAG-Defender Full flow magnetic filter

The SALUS Mag DEFENDER is an ultra high efficiency, full-flow magnetic filter. Designed for easy installation, cleaning and servicing, it protects all central heating systems by removing practically 100% of suspended black iron oxide.

FEATURES

- Simple installation & servicing
- Immediate results & system protection
- No running costs
- Energy saving
- 500ml capacity nylon enclosure
- Compression nylon cap with EPDM "O" ring for a perfect seal
- 20mm diameter removable neodymium magnet
- Top mounted air vent
- Vertical, base mounted 1/2" drain valve
- 22mm isolation valves supplied
- Easy removal of magnet



LX1 500ml & 1L System Guard Inhibitor

Buildcert approved inhibitors protect against damaging effects of corrosion and limescale to maintain energy efficiency of the boiler and extend system life. An efficient system minimises fuel bills and reduces carbon emissions.

FEATURES

- Protects against corrosion and limescale
- Prevents boiler noise
- Prevents sticking pumps
- Prevents cold spots in radiators
- Available in 500ml concentrated and 1L diluted size bottles



LX2 500ml & 1L System Guard Sludge Remover

Removes sludge, limescale and other debris from new and existing systems, restoring and maintaining energy efficiency. An efficient system minimises fuel bills and reduces carbon emissions.

FEATURES

- Restores systems with circulation problems
- Can be used in all systems
- Prepares existing systems for the installation of new boilers, pumps or panels
- Removes sludge and scale and restores heating efficiency
- Available in 500ml concentrated and 1L diluted size bottles



LX3 500ml & 1L System Cleaner

Removes installation debris from new and existing systems, restoring and maintaining energy efficiency. An efficient system minimises fuel bills and reduces carbon emissions.

FEATURES

- Removes flux residues and other debris
- Easy to use system can be left running normally during cleansing
- Every boiler installation needs this product
- Available in 500ml concentrated and 1L diluted size bottles



Energy Saving A Rated Circulating Pump

Models: MP100A & MP200A

NEW

SALUS MPA series circulation motor pump is mainly used in domestic heating and hot water system.

This pump is equipped with permanent magnet motor and differential pressure controller, capable of automatically & continuously adjusting motor performance to meet the actual needs of system.

This pump is equipped with control panel on the front for easy operation by users.

FEATURES

- Meets EuP legislative demands.
- Energy efficient pump for significant energy savings.
- Variable and fixed speed operation - one pump for all jobs.
- Plug and Pump - no need to open terminal box.
- Comes pre-wired.
- 5 year warranty.



MP100A - 5 Meter Head

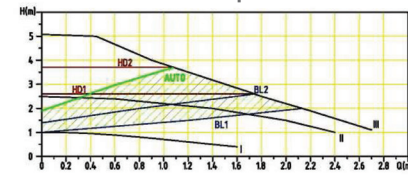
MP200A - 6 Meter Head

| | |
|-------------------|-------------|
| Voltage: | 230V 50Hz |
| Protection Grade: | IP42 |
| MP100A: | 5M Head Max |
| MP200A: | 6M Head Max |

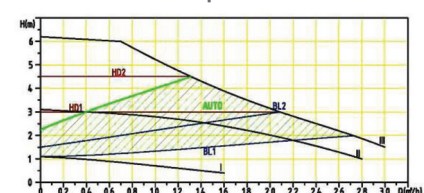
Wiring - MP100A & MP200A

| | |
|---|--------------------|
| L | Live Connection |
| N | Neutral Connection |
| E | Earth Connection |

SALUS MP100A 5 meter performance curve



SALUS MP200A 6 meter performance curve





ST620 VOLT FREE
Digital Programmable Thermostat

Digital programmable room thermostat with large backlit LCD display. Revolutionary touch ring for easy setting and simple control. Radio controlled clock (RCC) for automatic time setting.

Can be used for volt free and 230V applications.

| | |
|---------------|------------------|
| Supply: | 2xAA Batteries |
| Rating Max: | 10 (3) A SPST |
| Input/Output: | 0 - 230V |
| Scale: | 5 - 35°C |
| Size: | W-111 H-111 D-30 |

Wiring

| | |
|----|-----------------|
| L | Input |
| ⏏ | Earth |
| SL | Switched output |

FEATURES

- Touch ring technology
- Large LCD with white backlight
- Volt free contacts
- Battery powered with replacement indicator
- Frost protection
- RCC clock
- Service mode
- Manual override
- Built-in start up programming for quick installation



ST620PB VOLT FREE
Digital Programmable Thermostat

Digital programmable room thermostat with large backlit LCD display. Revolutionary touch ring for easy setting and simple control. Radio controlled clock (RCC) for automatic time setting.

Can be used for volt free and 230V applications.

| | |
|---------------|------------------|
| Supply: | 2xAA Batteries |
| Rating Max: | 10 (3) A SPST |
| Input/Output: | 0 - 230V |
| Scale: | 5 - 35°C |
| Size: | W-111 H-111 D-30 |

Wiring

| | |
|----|-----------------|
| L | Input |
| ⏏ | Earth |
| SL | Switched output |

FEATURES

- Touch ring technology
- Large LCD with white backlight
- Volt free contacts
- Battery powered with replacement indicator
- Frost protection
- RCC clock
- Service mode
- Manual override
- Built-in start up programming for quick installation



RT500 VOLT FREE
Digital Programmable Thermostat

Digital programmable room thermostat with large backlit LCD display and volt free contacts.

Can be used for volt free and 230V applications.

| | |
|----------------|-----------------|
| Supply: | 2xAA Batteries |
| Switching Max: | 3 (1) A SPST |
| Input/Output: | 0 - 230V |
| Scale: | 5 - 35°C |
| Size: | W-130 H-95 D-40 |

Wiring

| | |
|----|-----------------|
| L | Input |
| ⏏ | Earth |
| SL | Switched output |

FEATURES

- Volt free contacts
- 5/2 or 7 day programming
- Built-in start up programming for quick installation
- Battery powered with replacement indicator
- Frost protection
- Manual override



091FL VOLT FREE
Digital Programmable Thermostat

Programmable digital room thermostat with large backlit LCD display.

Can be used for volt free and 230V applications.

| | |
|---------------|-----------------|
| Supply: | 2xAA Batteries |
| Rating Max: | 5 (3) A SPST |
| Input/Output: | 0 - 230V |
| Scale: | 5 - 30°C |
| Size: | W-154 H-80 D-30 |

Wiring

| | |
|-----|-----------------|
| COM | Input |
| NO | Switched output |

FEATURES

- 7 days programming
- Temperature setting accuracy 0.2c
- Volt free contacts
- Manual override
- Built-in start up programming for quick installation



091FLPB VOLT FREE
Digital Programmable Thermostat

Programmable digital room thermostat with large backlit LCD display. Piano Black finish.

Can be used for volt free and 230V applications.

| | |
|---------------|-----------------|
| Supply: | 2xAA Batteries |
| Rating Max: | 5 (3) A SPST |
| Input/Output: | 0 - 230V |
| Scale: | 5 - 30°C |
| Size: | W-154 H-80 D-30 |

Wiring

| | |
|-----|-----------------|
| COM | Input |
| NO | Switched output |

FEATURES

- 7 days programming
- Temperature setting accuracy 0.2c
- Volt free contacts
- Manual override
- Built-in start up programming for quick installation





ST320 (White) **VOLT FREE**
ST320PB (Black) **VOLT FREE**
Digital Thermostat

Digital room thermostat with large backlit LCD display. Revolutionary touch ring for easy setting and simple control.

Can be used for volt free and 230V applications.

| | |
|---------------|------------------|
| Supply: | 2xAA Batteries |
| Rating Max: | 10 (3) A SPST |
| Input/Output: | 0 - 230V |
| Scale: | 5 - 35°C |
| Size: | W-111 H-111 D-30 |

Wiring

| | |
|----|-----------------|
| L | Input |
| ⏚ | Earth |
| SL | Switched output |

FEATURES

- Touch ring technology
- Large LCD with white backlight
- Stylish casing
- Volt free contacts
- Battery powered with replacement indicator
- Frost protection
- Burner on symbol

ST320



ST320PB



RT300 **VOLT FREE**
Digital Room Thermostat

Digital room thermostat with large backlit LCD display and volt free contacts.

Can be used for volt free and 230V applications.

| | |
|----------------|----------------|
| Supply: | 2xAA Batteries |
| Switching Max: | 3 (1) A SPST |
| Input/Output: | 0 - 230V |
| Scale: | 5 - 35°C |
| Size: | W-95 H-95 D-40 |

Wiring

| | |
|----|-----------------|
| L | Input |
| ⏚ | Earth |
| SL | Switched output |

FEATURES

- Volt free contacts
- Stylish casing
- Battery powered with replacement indicator
- Frost protection
- Large, easy to read LCD with blue backlight



RT100 **VOLT FREE**
Mechanical Room Thermostat

The RT100 mechanical room thermostat is widely used in commercial, industrial and residential buildings. Suitable for controlling room temperature, easy to install, accurate sensitivity and reliability.

Can be used for volt free and 230V applications.

| | |
|-------------|----------------|
| Supply: | 0 - 230V |
| Rating Max: | 1 A SPDT |
| Scale: | 10 - 30°C |
| Size: | W-73 H-73 D-38 |

Wiring

| | |
|-----|-----------------|
| NC | Switched output |
| COM | Live input |
| NO | Switched output |

FEATURES

- Simple control
- 2 wire installation
- Suitable for replacement market
- Volt free contact
- Change over contacts



RT200 **230V**
Electronic Room Thermostat

Easy to use electronic room thermostat provides accurate temperature control for all central heating applications.

Can only be used for 230V applications.

| | |
|-------------|----------------|
| Supply: | 230Vac 50Hz |
| Rating Max: | 3 (1) A SPST |
| Output: | 230Vac 50Hz |
| Scale: | 5 - 30°C |
| Size: | W-95 H-95 D-40 |

Wiring

| | |
|----|--------------------|
| N | Neutral connection |
| L | Live connection |
| SL | Switch live output |
| ⏚ | Earth |

FEATURES

- Stylish appearance
- Simple operation
- LED indication for heating demand
- Industry standard back plate for ease of installation



FT100 **230V**
Electronic Thermostat

Electronic thermostat for frost protection.

Can only be used for 230V applications.

| | |
|-------------|----------------|
| Supply: | 230Vac 50Hz |
| Rating Max: | 3 (1) A SPST |
| Output: | 230Vac 50Hz |
| Scale: | -10 - 20°C |
| Size: | W-95 H-95 D-40 |

Wiring

| | |
|----|--------------------|
| N | Neutral connection |
| L | Live connection |
| SL | Switch live output |
| ⏚ | Earth |

FEATURES

- LED indicator for heating demand
- Large dial
- Simple operation
- Tamper proof cover





ST620RF VOLT FREE RF

Digital Programmable Thermostat with RF

Radio frequency digital programmable room thermostat with large backlit LCD display. Revolutionary touch ring for easy setting and simple control. Radio controlled clock (RCC) provides superb accuracy and automatic time adjustments.

Can be used for volt free and 230V applications.

| | |
|-----------------------|------------------|
| Thermostat Supply: | 2xAA Batteries |
| Receiver (Rx) Supply: | 230Vac 50Hz |
| Rx Rating Max: | 16 (5) A SPST |
| Rx Input/Output: | 0 - 230V |
| Thermostat Scale: | 5 - 35°C |
| Thermostat Size: | W-111 H-111 D-30 |
| Receiver Size: | W-145 H-100 D-35 |

RF Receiver Wiring

| | |
|-----|-----------------|
| L | Live connection |
| N | Neutral |
| ⏏ | Earth |
| COM | Input |
| NO | Switched output |

FEATURES

- Stylish design
- Multi generated RF coding
- Cycle mode for system protection
- RCC clock
- Service mode
- Volt free contacts
- Frequency 868 MHz (30 metre range)



ST620WBC PLUG-IN RF

Digital Programmable Thermostat & BC

Stylish digital programmable room thermostat with plug in radio frequency boiler control and revolutionary touch ring for easy setting and simple control.

| | |
|----------------------|------------------|
| Thermostat supply: | 2xAA Batteries |
| Receiver supply: | 24V dc |
| Receiver output: | 24V dc |
| Thermostat Scale: | 5 - 35°C |
| Boiler control size: | W-130 H-108 D-25 |

FEATURES OF RECEIVER

- Plug in connection
- LED status indication
- Manual override control
- Compatible with Bosch boilers

FEATURES OF THERMOSTAT

- Touch ring technology
- Large LCD with white backlight
- Stylish casing
- Plug in connection
- Battery powered with replacement indicator
- Frost protection
- Built-in start up programming for quick installation
- Frequency 868 MHz (30 metre range)



ST620VBC PLUG-IN RF

Digital Programmable Thermostat & BC

Stylish digital programmable room thermostat with plug in radio frequency boiler control and revolutionary touch ring for easy setting and simple control.

| | |
|----------------------|-----------------|
| Thermostat supply: | 2xAA Batteries |
| Receiver supply: | 24V dc |
| Receiver output: | 24V dc |
| Thermostat Scale: | 5 - 35°C |
| Boiler control size: | W-145 H-98 D-20 |

FEATURES OF RECEIVER

- Plug in connection
- LED status indication
- Manual override control
- Compatible with Vaillant boilers

FEATURES OF THERMOSTAT

- Touch ring technology
- Large LCD with white backlight
- Stylish casing
- Plug in connection
- Battery powered with replacement indicator
- Frost protection
- Built-in start up programming for quick installation
- Frequency 868 MHz (30 metre range)



RT500RF VOLT FREE RF

Digital Programmable Thermostat with RF

Radio frequency digital programmable room thermostat with large backlit LCD display.

Can be used for volt free and 230V applications.

| | |
|-----------------------|-----------------|
| Thermostat Supply: | 2xAA Batteries |
| Receiver (Rx) Supply: | 230Vac 50Hz |
| Rx Rating Max: | 16 (5) A SPST |
| Rx Input/Output: | 0 - 230V |
| Thermostat Scale: | 5 - 35°C |
| Thermostat Size: | W-130 H-95 D-40 |
| Receiver Size: | W-130 H-95 D-65 |

RF Receiver Wiring

| | |
|-----|--------------------|
| L | Live connection |
| N | Neutral connection |
| COM | Input |
| NO | Switched output |

FEATURES

- 5/2 or 7 day programming flexibility
- Desk stand
- Frequency 868 MHz (30 metre range)



RT500ROF VOLT FREE RF

Digital Programmable RF Thermostat with One Touch Control

Radio frequency digital programmable room thermostat with remote 'energy saving' one-touch override control.

Can be used for volt free and 230V applications.

| | |
|-----------------------|-----------------|
| Thermostat Supply: | 2xAA Batteries |
| Receiver (Rx) Supply: | 230Vac 50Hz |
| Rx Rating Max: | 16 (5) A SPST |
| Rx Input/Output: | 0 - 230V |
| Thermostat Scale: | 5 - 35°C |
| Thermostat Size: | W-130 H-95 D-40 |
| Receiver Size: | W-130 H-95 D-65 |
| One Touch Unit Size: | W-74 H-74 D-18 |
| One Touch Supply | 2xAAA Batteries |

RF Receiver Wiring

| | |
|-----|--------------------|
| L | Live connection |
| N | Neutral connection |
| COM | Input |
| NO | Switched output |

FEATURES

- 5/2 or 7 day programming flexibility
- Energy override switch
- Desk stand
- Frequency 868 MHz (30 metre range)





RT500BC **PLUG-IN** **RF**
Digital Programmable RF Thermostat with Plug In Boiler Control

Digital programmable room thermostat with 'plug-in' radio frequency boiler control.

| | |
|----------------------|-----------------|
| Thermostat Supply: | 2xAA Batteries |
| Receiver Supply: | 230Vac 50Hz |
| Rating Max: | 5 (1) A SPST |
| Output: | 0 - 230V |
| Scale: | 5 - 35°C |
| Unit Size: | W-130 H-95 D-40 |
| Boiler Control Size: | W-58 H-58 D-30 |

Internal Boiler Connections

| | |
|---|--------------------|
| 1 | Neutral connection |
| 2 | Live connection |
| 3 | Live in |
| 4 | Switched output |

FEATURES

- Volt free contacts
- 5/2 or 7 day programming flexibility
- Plug in boiler receiver
- Desk stand
- Frequency 868 MHz (30 metre range)



O91FLRF **VOLT FREE** **RF**
Digital Programmable Thermostat with RF

Easy to use radio frequency digital programmable room thermostat with large backlit LCD display.

Can be used for volt free and 230V applications.

| | |
|-----------------------|-----------------|
| Thermostat Supply: | 2xAA Batteries |
| Receiver (Rx) Supply: | 230Vac 50Hz |
| Rx Rating Max: | 16 (5) A SPST |
| Rx Input/Output: | 0 - 230V |
| Thermostat Scale: | 5 - 30°C |
| Thermostat Size: | W-154 H-80 D-30 |
| Receiver Size: | W-130 H-95 D-65 |

RF Receiver Wiring

| | |
|-----|--------------------|
| L | Live connection |
| N | Neutral connection |
| COM | Input |
| NO | Switched output |

FEATURES

- Volt free contacts
- Programming 7 days
- Power supply 2 x AA transmitter, 230V receiver
- Temperature setting accuracy 0.2°C
- Desk stand
- Frequency 868 MHz (30 metre range)



O91FLRFPB **VOLT FREE** **RF**
Digital Programmable Thermostat with RF

Easy to use radio frequency digital programmable room thermostat with large backlit LCD display. Piano Black finish.

Can be used for volt free and 230V applications.

| | |
|-----------------------|-----------------|
| Thermostat Supply: | 2xAA Batteries |
| Receiver (Rx) Supply: | 230Vac 50Hz |
| Rx Rating Max: | 16 (5) A SPST |
| Rx Input/Output: | 0 - 230V |
| Thermostat Scale: | 5 - 30°C |
| Thermostat Size: | W-154 H-80 D-30 |
| Receiver Size: | W-130 H-95 D-65 |

RF Receiver Wiring

| | |
|-----|--------------------|
| L | Live connection |
| N | Neutral connection |
| COM | Input |
| NO | Switched output |

FEATURES

- Volt free contacts
- Programming 7 days
- Power supply 2 x AA transmitter and 230V receiver
- Temperature setting accuracy 0.2°C
- Desk stand
- Frequency 868 MHz (30 metre range)



ST320RF **VOLT FREE** **RF**
Digital Room Thermostat with RF

Radio frequency digital room thermostat with large backlit LCD display. Revolutionary touch ring for easy setting and simple control.

Can be used for volt free and 230V applications.

| | |
|-----------------------|------------------|
| Thermostat Supply: | 2xAA Batteries |
| Receiver (Rx) Supply: | 230Vac 50Hz |
| Rx Rating Max: | 16 (5) A SPST |
| Rx Input/Output: | 0 - 230V |
| Thermostat Scale: | 5 - 35°C |
| Thermostat Size: | W-111 H-111 D-30 |
| Receiver Size: | W-145 H-100 D-35 |

RF Receiver Wiring

| | |
|-----|--------------------|
| L | Live connection |
| N | Neutral connection |
| ⊥ | Earth |
| COM | Input |
| NO | Switched output |

FEATURES

- Multi generated RF coding
- Permanent On/Off
- Cycle mode for system protection
- LED indicators
- Frequency 868 MHz (30 metre range)



RT300RF **VOLT FREE** **RF**
Digital Room Thermostat with RF

Radio frequency digital room thermostat with large backlit LCD display.

Can be used for volt free and 230V applications.

| | |
|-----------------------|-----------------|
| Thermostat Supply: | 2xAA Batteries |
| Receiver (Rx) Supply: | 230Vac 50Hz |
| Rx Rating Max: | 16 (5) A SPST |
| Rx Input/Output: | 0 - 230V |
| Thermostat Scale: | 5 - 35°C |
| Thermostat Size: | W-95 H-95 D-40 |
| Receiver Size: | W-130 H-95 D-65 |

RF Receiver Wiring

| | |
|-----|--------------------|
| L | Live connection |
| N | Neutral connection |
| COM | Input |
| NO | Switched output |

FEATURES

- Volt free contacts
- Stylish casing
- Desk stand
- Frequency 868 MHz (30 metre range)





EP101 VOLT FREE
Digital Timer

Easy to use digital timer for single channel system applications.

Can be used for volt free and 230V applications.

| | |
|-------------|-----------------|
| Supply: | 230Vac 50Hz |
| Rating Max: | 3 (1) A SPDT |
| Output: | 0 - 230V |
| Size: | W-130 H-95 D-40 |

Wiring

| | |
|-----|--------------------|
| L | Live connection |
| N | Neutral connection |
| (3) | Switched output |
| (4) | Common connection |

FEATURES

- Timed control of central heating
- Volt free output
- 3 On/Off periods
- Large, easy to read LCD with blue backlight
- Holiday function
- Advance 1 hour function
- Built-in start up programme



EP200 230V
2 Channel Programmer

2 channel programmer for timed control of central heating and hot water in a domestic system.

Can only be used for 230V applications.

| | |
|-------------|-----------------|
| Supply: | 230Vac 50Hz |
| Rating Max: | 3 (1) A 2x SPDT |
| Output: | 230Vac 50Hz |
| Size: | W-130 H-95 D-40 |

Wiring

| | |
|-----|--------------------|
| L | Live connection |
| N | Neutral connection |
| (1) | HW off |
| (2) | CH off |
| (3) | HW on |
| (4) | CH on |

FEATURES

- Individual control of central heating and hot water
- 3 On/Off periods
- Large, easy to read LCD with blue backlight
- Holiday function
- Advance 1 hour function
- Built-in start up programming for quick installation



SP120 VOLT FREE
Digital Timer

Stylish digital timer for single channel applications. Innovative touch ring control with large backlit LCD display for easy setting and simple control.

Can be used for volt free and 230V applications.

| | |
|-------------|------------------|
| Supply: | 230Vac 50Hz |
| Rating Max: | 10 (3) A SPDT |
| Output: | 0 - 230V |
| Size: | W-111 H-111 D-30 |

Wiring

| | |
|-----|--------------------|
| L | Live connection |
| N | Neutral connection |
| (3) | Switched output |
| (4) | Common connection |

FEATURES

- Touch ring technology
- Volt free output
- 3 On/Off periods
- Holiday function
- Advance 1 hour function
- Built in start up program
- RCC clock
- Service mode



SP220 230V
2 Channel Digital Programmer

Stylish two channel digital programmer for timed control of central heating and hot water in a domestic system. Revolutionary touch ring for easy setting and simple control.

Can only be used for 230V applications.

| | |
|-------------|------------------|
| Supply: | 230Vac 50Hz |
| Rating Max: | 10 (4) A 2x SPDT |
| Output: | 230Vac 50Hz |
| Size: | W-111 H-111 D-30 |

Wiring

| | |
|-----|--------------------|
| L | Live connection |
| N | Neutral connection |
| (1) | HW off |
| (2) | CH off |
| (3) | HW on |
| (4) | CH on |

FEATURES

- Touch ring technology
- 3 On/Off periods
- Individual control of central heating and hot water
- Holiday function
- RCC clock
- Service mode
- Built-in start up programming for quick installation





SBMV22/28 230V
2 Port Motorised Valve

Standard Motorised Valve used for domestic central heating and hot water systems.

| | |
|--------------|-----------------|
| Supply: | 230Vac 50Hz |
| Rating Max: | 6 (2) A |
| Output: | 230Vac 50Hz |
| Size 2 port: | W-88 H-110 D-65 |

Wiring

| | |
|--------------|--------------------|
| Brown | SL from thermostat |
| Grey | Permanent live |
| Blue | Neutral |
| Yellow/Green | Earth |
| Orange | Output to boiler |

FEATURES

- Suitable for S & C plan applications
- Industry colour coded wiring with 1m cable
- Detachable head



SBMV32/38 230V
3 Port Motorised Valve

Standard Motorised Valve used for domestic central heating and hot water systems.

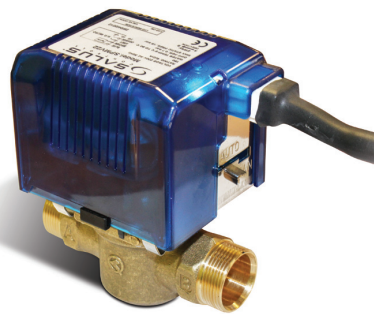
| | |
|--------------|-----------------|
| Supply: | 230Vac 50Hz |
| Rating Max: | 6 (2) A |
| Output: | 230Vac 50Hz |
| Size 3 port: | W-88 H-122 D-65 |

Wiring

| | |
|--------------|-----------------------|
| Blue | Neutral |
| White | Switched input CH ON |
| Grey | Switched input HW OFF |
| Orange | Switched output |
| Yellow/Green | Earth |

FEATURES

- Suitable for Y & W plan applications
- Industry colour coded wiring with 1m cable
- Detachable head



SPMV22 230V
2 Port Premium Motorised Valve

Premium Motorised Valve with plug in cable and LED position indication.

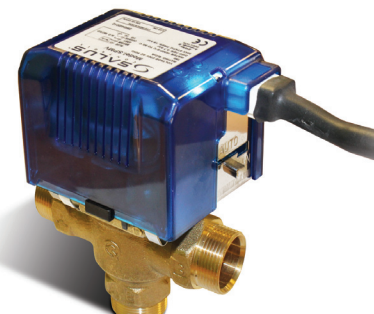
| | |
|--------------|-----------------|
| Supply: | 230Vac 50Hz |
| Rating Max: | 6 (2) A |
| Output: | 230Vac 50Hz |
| Size 2 port: | W-88 H-110 D-65 |

Wiring

| | |
|--------------|--------------------|
| Brown | SL from thermostat |
| Grey | Permanent live |
| Blue | Neutral |
| Yellow/Green | Earth |
| Orange | Output to boiler |

FEATURES

- Suitable for S & C plan applications
- Industry colour coded wiring
- Plug in cable
- LED position indication
- Detachable head



SPMV32 230V
3 Port Premium Motorised Valve

Premium Motorised Valve with plug in cable and LED position indication.

| | |
|--------------|-----------------|
| Supply: | 230Vac 50Hz |
| Rating Max: | 6 (2) A |
| Output: | 230Vac 50Hz |
| Size 3 port: | W-88 H-122 D-65 |

Wiring

| | |
|--------------|-----------------------|
| Blue | Neutral |
| White | Switched input CH ON |
| Grey | Switched input HW OFF |
| Orange | Switched output |
| Yellow/Green | Earth |

FEATURES

- Suitable for Y & W plan applications
- Industry colour coded wiring
- Plug in cable
- LED position indication
- Detachable head



CT100 230V
Pipe/Cylinder Thermostat

Surface mounted mechanical thermostat for control of a domestic hot water cylinder.

| | |
|-------------|-----------------|
| Supply: | 230Vac 50Hz |
| Rating Max: | 16 (4) A SPDT |
| Output: | 230Vac 50Hz |
| Scale: | 20 - 90°C |
| Size: | W-73 H-105 D-40 |

| | |
|-----|----------------------|
| (1) | Normally closed (NC) |
| (2) | Normally open (NO) |
| C | Live connection |

FEATURES

- Compatible with foam lagged cylinders
- Can be used as pipe thermostat





RT10 **230V** **24V** Versions
RT10T **230V** **TRIAC**
Electronic Room Thermostat

Easy to use electronic room thermostat with optional pulse width modulation, valve protection function and connection for night temperature reduction.

| | RT10 230V | 24V | RT10T Triac |
|-----------|----------------|------------|----------------|
| Supply: | 230Vac SPST | 24Vac SPDT | 230Vac |
| Rating: | 10 (3) A | 10 (3) A | 1 A |
| Output: | 230Vac | 24Vac | 230Vac |
| Scale: | 5 - 30°C | | |
| Accuracy: | 1°C | | |
| Size: | W-75 H-75 D-25 | | |

230V & Triac Wiring

| | |
|---|-----------------|
| ⊕ | Night setback |
| N | Neutral |
| L | 230V Live |
| ← | Switched output |

24V Wiring

| | |
|----|-----------------|
| ⊕ | Night setback |
| L2 | 24Vac |
| N0 | Normally open |
| → | Common |
| NC | Normally closed |
| L1 | 24Vac |

FEATURES

- Simple to use
- Pulse width modulation (PWM)
- Valve / pump protection function
- Night setback (when used with ERT50)
- Easy to install
- Modern design

RT10



RT10T



ERT20 **230V** **24V** Versions
Electronic Room Thermostat

Easy to use electronic room thermostat with optional pulse width modulation, valve protection functions and connection for night setback temperature.

| | 230V | 24V |
|-----------|----------------|---------------|
| Supply: | 230Vac 50Hz | 24Vac |
| Rating: | 10 (2) A SPST | 10 (2) A SPST |
| Output: | 230Vac 50Hz | 24Vac |
| Scale: | 5 - 30°C | |
| Accuracy: | 1°C | |
| Size: | W-80 H-80 D-33 | |

230V Wiring

| | |
|---|-----------------|
| ⊕ | Night setback |
| N | Neutral |
| L | 230V Live |
| ← | Switched output |

24V Wiring

| | |
|----|-----------------|
| ⊕ | Night setback |
| L1 | 24Vac |
| L2 | 24Vac |
| ← | Switched output |

FEATURES

- Simple operation with backlit hand dial
- Clearly visible temperature scale
- Night setback (when used with ERT50)
- Modern design
- Valve / pump protection function
- Pulse width modulation (PWM)



ERT20T **230V** **TRIAC**
Electronic Room Thermostat

Silent switching output version of the ERT20.

| | |
|-----------|----------------|
| Supply: | 230Vac 50Hz |
| Rating: | 0.2 A |
| Output: | 230Vac 50Hz |
| Scale: | 5 - 30°C |
| Accuracy: | 1°C |
| Size: | W-80 H-80 D-33 |

230V Triac Wiring

| | |
|---|-----------------|
| ⊕ | Night setback |
| N | Neutral |
| L | 230V Live |
| ← | Switched output |

FEATURES

- Simple operation with backlit hand dial
- Clearly visible temperature scale
- Unique control convenience
- Modern design
- Valve / pump protection function
- Pulse width modulation (PWM)
- Silent switching



ERT22 **230V**
Electronic Room Thermostat

Easy to use electronic room thermostat with optional pulse width modulation, valve protection function and connection for night setback temperature. External heat/cool switch.

| | |
|-----------|----------------|
| Supply: | 230Vac 50Hz |
| Rating: | 10 (2) A SPST |
| Output: | 230Vac 50Hz |
| Scale: | 5 - 30°C |
| Accuracy: | 1°C |
| Size: | W-82 H-84 D-30 |

230V Wiring

| | |
|---|-----------------|
| ⊕ | Night setback |
| N | Neutral |
| L | 230V Live |
| ← | Switched output |

FEATURES

- Simple operation with backlit hand dial
- Clearly visible temperature scale
- Night setback (when used with ERT50)
- Modern design
- Valve / pump protection function
- Pulse width modulation (PWM)



ERT30 **230V** **24V** Versions
Digital Room Thermostat

Stylish digital room thermostat with large backlit LCD display. Optional Pulse width modulation, valve protection function, connection for night setback temperature.

| | 230V | 24V |
|-----------|----------------|---------------|
| Supply: | 230Vac 50Hz | 24Vac |
| Rating: | 10 (3) A SPST | 10 (2) A SPST |
| Output: | 230Vac 50Hz | 24Vac |
| Scale: | 5 - 30°C | |
| Accuracy: | 1°C | |
| Size: | W-58 H-58 D-30 | |

230V Wiring

| | |
|---|-----------------|
| ⊕ | Night setback |
| N | Neutral |
| L | 230V Live |
| ← | Switched output |

24V Wiring

| | |
|----|-----------------|
| ⊕ | Night setback |
| L1 | 24Vac |
| L2 | 24Vac |
| ← | Switched output |

FEATURES

- Simple keypad operation
- Large, backlit display
- Night setback (when used with ERT50)
- Pulse width modulation (PWM)
- Valve / pump protection function
- Heating or cooling





ERT30RT 230V 24V TRIAC Versions
Digital Room Thermostat

Silent switching version of the ERT30 with connection for remote sensor.

| | 230V Triac | 24V Triac |
|-----------|----------------|-----------|
| Supply: | 230Vac 50Hz | 24Vac |
| Rating: | 0.2 A | 0.6 A |
| Output: | 230Vac 50Hz | 24Vac |
| Scale: | 5 - 30°C | |
| Accuracy: | 1°C | |
| Size: | W-75 H-75 D-25 | |

| 230V Triac Wiring | | 24V Triac Wiring | |
|-------------------|-----------------|------------------|-----------------|
| ⊕ | Night setback | ⊕ | Night setback |
| N | Neutral | L1 | 24Vac |
| L | 230V Live | L2 | 24Vac |
| ← | Switched output | ← | Switched output |
| S1 | Remote sensor | S1 | Remote sensor |
| S2 | Remote sensor | S2 | Remote sensor |

- FEATURES**
- Remote/Floor temperature input
 - Valve protection
 - Large, easy to read LCD with orange backlight
 - Stylish casing
 - Will operate up to 5 thermal actuators
 - Frost protection
 - Reset button
 - Selectable set back 2°C / 4°C



ERT30UP 230V
Digital Room Thermostat

The ERT30UP Digital room thermostat for underfloor heating. This thermostat can be used with the SALUS floor sensor and also be flush mounted.

| | |
|-----------|----------------|
| Supply: | 230Vac 50Hz |
| Rating: | 10 (3) A |
| Output: | 230Vac 50Hz |
| Scale: | 5 - 30°C |
| Accuracy: | 1°C |
| Size: | W-58 H-58 D-30 |

Wiring

| | |
|----|-----------------|
| N | Neutral |
| L | 230V Live |
| ← | Switched output |
| S1 | Remote sensor |
| S2 | Remote sensor |

- FEATURES**
- Simple keypad operation
 - Large, backlit display
 - Pulse width modulation (PWM)
 - Valve / pump protection function
 - External sensor connection



ERT32 230V
Digital Programmable Room Thermostat

Stylish digital room thermostat with large backlit LCD display. Optional pulse width modulation, valve protection function, connection for night setback. Suitable for under-floor heating systems.

| | |
|-----------|----------------|
| Supply: | 230Vac 50Hz |
| Rating: | 10 (3) A SPST |
| Output: | 230Vac 50Hz |
| Scale: | 5 - 30°C |
| Accuracy: | 1°C |
| Size: | W-82 H-84 D-30 |

Wiring

| | |
|---|-----------------|
| ⊕ | Night setback |
| N | Neutral |
| L | 230V Live |
| ← | Switched output |

- FEATURES**
- Simple keypad operation
 - Large, backlit display
 - Night setback (when used with ERT50)
 - Pulse width modulation (PWM)
 - Valve / pump protection function
 - Heating or cooling



FS FLOOR SENSOR
External Under-Floor Heating Sensor

External Sensor for under-floor heating. Can be used as a floor sensor.

| Terminal | Description |
|----------|--|
| S1 | Remote/Floor temperature sensor terminal 1 |
| S2 | Remote/Floor temperature sensor terminal 2 |

- FS2000** - 2 meter length
- FS3000** - 3 meter length
- FS4000** - 4 meter length



ERT50 230V 24V Versions
Digital Programmable Room Thermostat

Easy to use digital room thermostat with optional pulse width modulation, valve protection function and connection for night temperature reduction. Suitable for under-floor heating systems.

| | 230V | 24V |
|-------------|-----------------|--------------|
| Supply: | 230Vac 50Hz | 24V AC |
| Rating Max: | 10 (3) A SPST | 4 (2) A SPST |
| Scale: | 10 - 35°C | |
| Size: | W-58 H-130 D-30 | |

| 230V Wiring | | 24V Wiring | |
|-------------|-----------------|------------|-----------------|
| ⊕ | Night setback | ⊕ | Night setback |
| N | Neutral | L1 | 24Vac |
| L | 230V Live | L2 | 24Vac |
| ← | Switched output | ← | Switched output |

- FEATURES**
- Pulse width modulation (PWM)
 - Valve protection function (VPF)
 - Night setback (NSB)
 - Stylish casing
 - Heating or cooling





ERT50T 230V TRIAC
Digital Programmable Thermostat

Silent switching output version of the ERT50.

| | |
|-----------|-----------------|
| Supply: | 230Vac 50Hz |
| Rating: | 0.2 A |
| Output: | 230Vac 50Hz |
| Scale: | 10 - 35°C |
| Accuracy: | 1°C |
| Size: | W-58 H-130 D-30 |

Wiring

| | |
|---|------------------------------|
| | Connection for night setback |
| N | Neutral connection |
| L | 230V connection |
| ← | Switched live output |

FEATURES

- Pulse width modulation (PWM)
- Valve protection function (VPF)
- Night setback (NSB)
- Stylish casing
- Heating or cooling
- Silent switching



ERT52 230V
Digital Programmable Thermostat

Stylish digital programmable thermostat with large backlit display. Optional pulse width modulation, valve protection function and connection for night temperature reduction. Can be used as master control for under-floor heating system.

| | |
|-----------|-----------------|
| Supply: | 230Vac 50Hz |
| Rating: | 10 (3) A SPST |
| Output: | 230Vac 50Hz |
| Scale: | 10 - 35°C |
| Accuracy: | 1°C |
| Size: | W-84 H-130 D-30 |

Wiring

| | |
|---|------------------------------|
| | Connection for night setback |
| N | Neutral connection |
| L | 230V connection |
| ← | Switched live output |

FEATURES

- Pulse width modulation (PWM)
- Valve protection function (VPF)
- Night set back (NSB)
- Stylish casing
- Heating or cooling



ERT50UP 230V
Digital Room Thermostat

Flush mount version of the ERT50.

| | |
|-----------|----------------|
| Supply: | 230Vac 50Hz |
| Rating: | 10 (3) A SPST |
| Output: | 230Vac 50Hz |
| Scale: | 10 - 30°C |
| Accuracy: | 1°C |
| Size: | W-58 H-58 D-30 |

Wiring

| | |
|----|-----------------------|
| S1 | External connection 1 |
| S2 | External connection 2 |
| N | Neutral connection |
| L | 230V connection |
| ← | Switched live output |

FEATURES

- Pulse width modulation (PWM)
- Valve protection function (VPF)
- Stylish casing
- Heating or cooling
- External sensor connection



ERT30RF RF
Digital Room Thermostat RF

Radio frequency digital room thermostat with large backlit LCD display. Optional pulse width modulation, valve protection function and connection for night temperature reduction. Designed for under-floor heating system. Internal heat/cool switch. Operates as a wireless radio thermostat using high power zigbee.

| | |
|---------|-----------------|
| Supply: | 2xAA Batteries |
| Scale: | 5 - 30°C |
| Size: | W-58 H-130 D-30 |

FEATURES

- Simple keypad operation
- Large, backlit display
- Integrated temperature reduction
- Pulse width modulation (PWM)
- Valve / pump protection function
- Heating or cooling
- High powered Zigbee



ERT50RF RF
Digital Programmable Room Thermostat RF

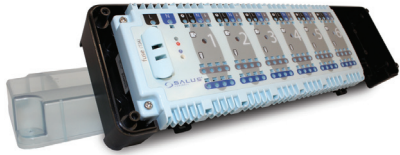
Digital programmable thermostat with large backlit display. Optional pulse width modulation, valve protection function and connection for night temperature reduction can be used as master control for under-floor heating system. Operates as a wireless radio thermostat using high power zigbee.

| | |
|---------|-----------------|
| Supply: | 2xAA Batteries |
| Scale: | 10 - 35°C |
| Size: | W-58 H-130 D-30 |

FEATURES

- Pulse width modulation (PWM)
- Valve protection function (VPF)
- Night setback (NSB)
- Stylish casing
- Heating or cooling
- High powered Zigbee





KL06 **230V** **24V** Versions Wiring Centre

SALUS wiring centre KL06 is the perfect connection between thermostats and thermal actuators (see TA28AR230). A useful upgrade is obtained by the installation of the pump/boiler logic module PL07. The volt-free relay switches the pump/boiler according to your settings.

| | 230V | 24V* |
|---------|-----------------|-------|
| Supply: | 230Vac 50Hz | 24Vac |
| Rating: | 2 A | 2 A |
| Output: | 230Vac 50Hz | 24Vac |
| Size: | W-300 H-86 D-60 | |

| 230V Wiring | | 24V* Wiring | |
|-------------|-----------|-------------|-------|
| N | Neutral | N | 24Vac |
| L | 230V live | L | 24Vac |

*24Vac transformer supplied

FEATURES

- Plug-in cable connections
- Up to 6 thermostats and 24 drive units connectable
- Clear and unmistakable marking of the terminals
- Strain relief
- LED status indication



KL06RF **230V** **RF** Wiring Centre with RF

SALUS wiring centre KL06 is the perfect connection between thermostats and thermal actuators. A useful upgrade is obtained by the installation of the pump/boiler logic module PL07.

| | |
|-------------|-----------------|
| Supply: | 230Vac 50Hz |
| Rating Max: | 2 A |
| Size: | W-300 H-86 D-60 |

| | |
|---|----------------------|
| N | Neutral connection |
| L | 230V live connection |

FEATURES

- Plug-in cable connections
- Up to 6 thermostats and 24 drive units connectable
- Clear and unmistakable marking of the terminals
- Strain relief
- LED status indication
- High powered Zigbee



PL07 **VOLT FREE** Pump and Boiler Logic Module

Pump and boiler logic module with pump protection function and adjustable time delay.

Use with KL06 and KL06RF.

| | |
|-------------|----------------|
| Supply: | 230Vac 50Hz |
| Rating Max: | 2x SPST |
| Size: | W-60 H-80 D-20 |

| | |
|------------|-----------------|
| Boiler (1) | Live in |
| Boiler (2) | Switched output |
| Boiler (3) | Live in |
| Boiler (4) | Switched output |

FEATURES

- Controls your pump and boiler individually according to your settings
- Driver relay
- Selectable follow up time for pump
- Pump and boiler protection
- Selectable delay-on for pump and boiler
- Adjustable pump overrun



NEW



Electro Thermal Actuators

- First Open Function
- Adaptive Stroke Length 4mm Max
- Low Watt consumption 2W
- Ease of Installation
- 100N force
- High Quality Wax Element
- 5 Year Warranty
- Simple Open and Close Indication
- Available in 24V and 230V
- M30 x 1.5 Fitting

SALUS Electro Thermal Actuator T30NC24

| | |
|---------|----------------------|
| Supply: | NC - Normally Closed |
| Size: | W-40mm H-60mm D-42mm |
| N: | 24Vac |
| L: | 24Vac |

SALUS Electro Thermal Actuator T30NC230

| | |
|---------|----------------------|
| Supply: | NC - Normally Closed |
| Size: | W-40mm H-60mm D-42mm |
| N: | Neutral Connection |
| L: | 230V Live Connection |



PH60, PH60-1
Programmable Thermostatic Radiator Valve

Fully programmable thermostatic radiator valve with PI control.

| | |
|---------|-------------------------------|
| Supply: | 2xAA (LR6) Alkaline Batteries |
| Scale: | 7 - 30°C |
| Size: | W-62 H-110 D-62 |

FEATURES

- LCD with backlight
- Stylish casing
- Simple to install
- 6 control modes
- Temporary override function
- Built in start-up programmes
- Limescale protection feature
- 7 day independent programming
- Dark/Light grey fascia

PH60



PH60-1



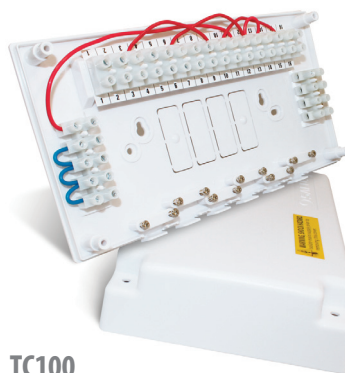
PH60C
Programmable Thermostatic Radiator Valve

Fully programmable thermostatic radiator valve with PI control.

| | |
|---------|-------------------------------|
| Supply: | 2xAA (LR6) Alkaline Batteries |
| Scale: | 7 - 30°C |
| Size: | W-62 H-110 D-62 |

FEATURES

- LCD with backlight
- Stylish casing
- Simple to install
- 6 control modes
- Temporary override function
- Built in start-up programmes
- Limescale protection feature
- 7 day independent programming
- Chrome fascia



TC100
Wiring Centre

Can be used in all heating applications with links for S & Y plan systems.

| | |
|-------------|------------------|
| Max Supply: | 230V AC |
| Terminals: | 16 Terminals |
| Size: | W-230 H-127 D-42 |

FEATURES

- Easy to use
- Simplifies wiring
- Large terminals
- Manufactured in flame-retardant plastic
- Suitable for all heating systems



BPV100
Automatic Bypass Valve

Automatic bypass valve for domestic heating system.

| | |
|-------|-----------------|
| Size: | W-105 H-50 D-22 |
|-------|-----------------|

FEATURES

- Improves efficiency
- Cuts out system noises
- Maintains flow rates
- Perfect for low water content systems
- Available in 22mm only



Thermostatic Radiator Valves

Thermostatic radiator valves for various applications.

| Model No | Description |
|----------|--|
| TRV310S | 15mm Straight TRV with reducer |
| TRLS10 | 15mm Lockshield with drain off |
| TRV310A | 15mm Angled TRV with reducer |
| TRV31LS5 | TRV Pack with 15mm angled TRV, lockshield & reducers |
| TRL55 | 15mm Lockshield |



Use these...



RT305TX



RT305TX



ST325TX

iT500BM



iT500BM

*Can only be used with RXVBC605, RXWBC605 and RXBC605

ST625TX



RT505TX

RT505TX

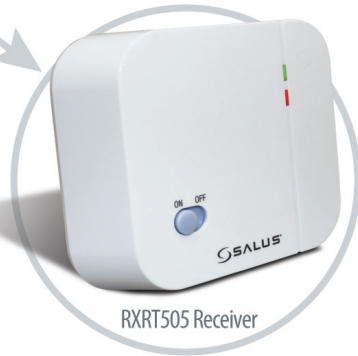
Use any SALUS thermostat with any SALUS receiver



ST625TX



RXBC605 Receiver



RXRT505 Receiver



RXST625 Receiver



RXVBC605 Receiver



RXWBC605 Receiver



...with these

New concept from SALUS CONTROLS PLC



ST625TX RF
Digital Programmable Thermostat

Digital programmable room thermostat with large backlit LCD display. Revolutionary touch ring for easy setting and simple control. Radio controlled clock (RCC) provides superb accuracy and automatic time adjustments.

| | |
|------------------|------------------|
| Supply: | 2xAA Batteries |
| Thermostat Scale | 5-35°C |
| Size: | W-111 H-111 D-30 |

FEATURES

- Touch ring technology
- Large LCD with white backlight
- Stylish casing
- Volt free contacts
- Battery powered with replacement indicator
- Frost protection
- Built-in start up programming for quick installation
- RCC clock
- Service mode
- Frequency 868 MHz (30 metre range)



ST325TX RF
Digital Thermostat

Digital room thermostat with large backlit LCD display. Revolutionary touch ring for easy setting and simple control.

| | |
|------------------|------------------|
| Supply: | 2xAA Batteries |
| Thermostat Scale | 5-35°C |
| Size: | W-111 H-111 D-30 |

FEATURES

- Touch ring technology
- Large LCD with white backlight
- Stylish casing
- Volt free contacts
- Battery powered with replacement indicator
- Frost protection
- Burner on symbol
- Frequency 868 MHz (30 metre range)



RT505TX RF
Digital Programmable Thermostat

Digital programmable room thermostat with large backlit LCD display and volt free contacts.

| | |
|------------------|-----------------|
| Supply: | 2xAA Batteries |
| Thermostat Scale | 5-35°C |
| Size: | W-130 H-95 D-40 |

FEATURES

- Volt free contacts
- 5/2 or 7 day programming
- Built-in start up programming for quick installation
- Battery powered with replacement indicator
- Frost protection
- Frequency 868 MHz (30 metre range)



RT305TX RF
Digital Room Thermostat

Digital room thermostat with large backlit LCD display and volt free contacts.

| | |
|------------------|----------------|
| Supply: | 2xAA Batteries |
| Thermostat Scale | 5-35°C |
| Size: | W-95 H-95 D-40 |

FEATURES

- Volt free contacts
- Stylish casing
- Battery powered with replacement indicator
- Frost protection
- Large, easy to read LCD with blue backlight
- Frequency 868 MHz (30 metre range)



NEW

*Can only be used with RXVBC605, RXWBC605 and RXBC605

iT500BM RF
Digital Thermostat

Digital room thermostat with large backlit LCD display and volt free contacts.

| | |
|------------------|-----------------|
| Supply: | 2xAA Batteries |
| Thermostat Scale | 5-35°C |
| Size: | W-128 H-95 D-30 |

FEATURES

- Wall or surface mount thermostat
- Touch controls
- Heat/Cool
- Built-in start up programming for quick installation
- Frequency 868 MHz (30 metre range)





RXST625 VOLT FREE RF
Receiver

RF Receiver compatible with any thermostat in the 5x5 range.

Can be used for volt free and 230V applications.

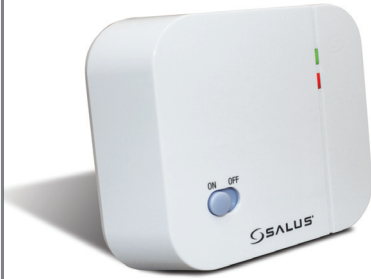
| | |
|---------------|------------------|
| Supply: | 230Vac 50Hz |
| Rating Max: | 16 (5) A SPST |
| Input/Output: | 0 - 230V |
| Size: | W-145 H-100 D-35 |

Wiring

| | |
|-----|--------------------|
| L | Live connection |
| N | Neutral connection |
| ⏏ | Earth |
| COM | Input |
| NO | Switched output |

FEATURES

- Multi generated RF coding
- Permanent On/Off
- Cycle mode for system protection
- LED indicators
- Volt free contacts
- Frequency 868 MHz (30 metre range)



RXRT505 VOLT FREE RF
Receiver

RF Receiver compatible with any thermostat in the 5x5 range.

Can be used for volt free and 230V applications.

| | |
|---------------|-----------------|
| Supply: | 230Vac 50Hz |
| Rating Max: | 16 (5) A SPST |
| Input/Output: | 0 - 230V |
| Size: | W-130 H-95 D-65 |

Wiring

| | |
|-----|--------------------|
| L | Live connection |
| N | Neutral connection |
| COM | Input |
| NO | Switched output |

FEATURES

- Volt free contacts
- 60 metre transmitter range
- Frequency 868 MHz (30 metre range)



*Compatible with all 5x5 thermostats, including iT500BM

RXVBC605 RF PLUG-IN
Plug-in Receiver

RF Receiver compatible with any thermostat in the 5x5 range.

| | |
|----------------------|-----------------|
| Receiver supply: | 24V dc |
| Receiver output: | 24V dc |
| Boiler control size: | W-145 H-98 D-20 |

FEATURES

- Plug in connections
- LED status indication
- Manual override control
- Compatible with Vaillant boilers
- Frequency 868 MHz (30 metre range)



*Compatible with all 5x5 thermostats, including iT500BM

RXWBC605 RF PLUG-IN
Plug-in Receiver

RF Receiver compatible with any thermostat in the 5x5 range.

| | |
|----------------------|------------------|
| Receiver supply: | 24V dc |
| Receiver output: | 24V dc |
| Boiler control size: | W-130 H-108 D-25 |

FEATURES

- Plug in connections
- LED status indication
- Manual override control
- Compatible with Bosch boilers
- Frequency 868 MHz (30 metre range)



*Compatible with all 5x5 thermostats, including iT500BM

RXBC605 RF PLUG-IN
Plug-in Receiver

RF Receiver compatible with any thermostat in the 5x5 range.

| | |
|-------------|----------------|
| Supply: | 230Vac 50Hz |
| Rating Max: | 5 (1) A SPST |
| Output: | 0 - 230V |
| Size: | W-58 H-58 D-30 |

Internal boiler connections

| | |
|---|--------------------|
| 1 | Neutral connection |
| 2 | Live connection |
| 3 | Live in |
| 4 | Switched output |

FEATURES

- Plug in connections
- Manual override control
- LED status indication
- Frequency 868 MHz (30 metre range)



SALUS Controls plc

SALUS House
Dodworth Business Park South,
Whinby Road,
Dodworth, Barnsley S75 3SP
UK.

SALES: T: +44 (0) 1226 323961
E: sales@salus-tech.com

TECHNICAL: T: +44 (0) 1226 323961
E: tech@salus-tech.com

www.salus-tech.com



SALUS Controls is a member of the Computime Group

Maintaining a policy of continued product development SALUS Controls plc reserve the right to change specification, design and materials of products listed in this brochure without prior notice.

Issue Date: November 2013

