

## New Greenstar Oilfit Plume Management Kit for Greenstar oil-fired boilers

A plume management kit for Greenstar oil-fired boilers is now available to divert troublesome exhaust plumes. The kit can be used on both internal and external models in conjunction with 80/125mm horizontal telescopic flues. The kits can also be used with the old style non-telescopic flues using an adaptor.

The kit consists of a 90° bend, a 500mm extension, a terminal bend, a clamp and a flue damper which is required for Camray 18/25, Camray 25/32 and Danesmoor Wall Mounted 18/25 boilers. Plume management lengths of up to 5m can be achieved using additional 1m extensions and 90° and 45° bends which are available as accessories.

Please note that the plume management kit is not suitable for use with gas-fired boilers.



Plume Management Kit



90° bend

45° elbows



1 metre extension

Product	Part number
Plume Management Kit (Includes 90° bend, 500mm extension, terminal bend, clamp and flue damper)	7 716 190 092
1m extension	7 716 190 093
2 x 45° elbows	7 716 190 094
90° bend	7 716 190 095
Conversion kit for old non-telescopic flues	7 716 190 100

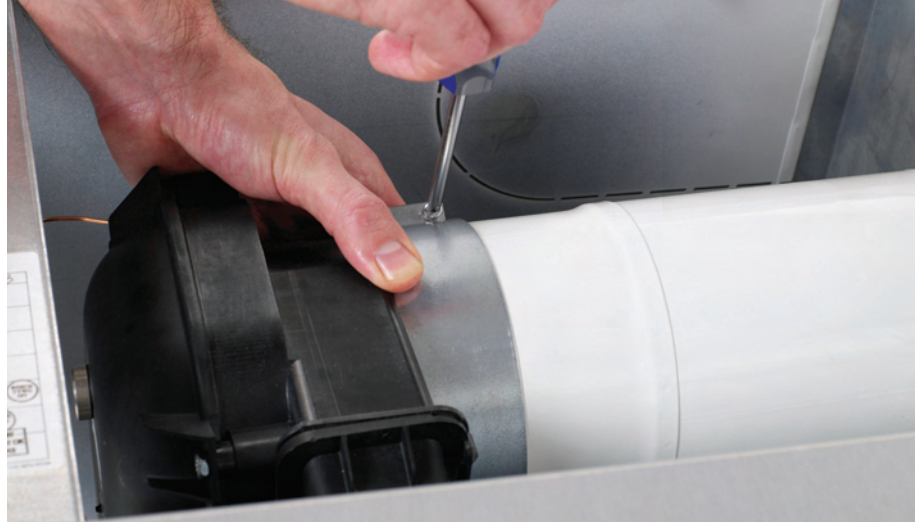
# PRODUCT BULLETIN

## Longer flue lengths for Greenstar Camray, Danesmoor and Heatslave 18/25 boilers

New flue lengths apply to the following 18/25 models only:

- Greenstar Camray 18/25
- Greenstar Camray Utility 18/25
- Greenstar Camray System 18/25
- Greenstar Camray Utility System 18/25
- Greenstar Danesmoor 18/25
- Greenstar Heatslave 18/25
- Greenstar Utility 18/25

Note: For further details consult the Greenstar Oilfit installation instructions (Part no. 6 720 645 523a)



### New maximum flue lengths

Boiler	Maximum effective flue length								Flue Ø
	High level horizontal		Low level horizontal rear		Low level horizontal side		Vertical		
	Old length	New length	Old length	New length	Old length	New length	Old length	New length	
Greenstar Camray 18/25	2m	5m*	4m	6m*	3m	5m*	8m	–	80/125mm
	–	–	–	–	–	–	–	10m*	100/150mm
Greenstar Danesmoor 18/25	2m	5m	4m	6m	3m	5m	6m	12m	80/125mm
Greenstar Heatslave 18/25	2m	5m	4m	6m	3m	5m	6m	12m	80/125mm

90° bends reduce flue length by 1m. 45° bends reduce flue length by 0.5m. \*Flue damper required.

Greenstar Camray 18/25 flues, exceeding certain lengths, require the fitting of a flue damper (Part no. 7 716 190 101). See table below.

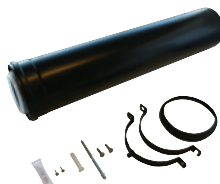
Flue Damper to be fitted to Greenstar Camray 18/25 at the following effective lengths			
High level horizontal	Low level horizontal rear	Low level horizontal side	Vertical 100/150
>2m	>4m	>3m	All lengths



Flue damper



Internal 600mm 80/125 flue extension



External 600mm 80/125 flue extension

### New Greenstar flue accessories

Product	Part number
Internal 600mm 80/125mm flue extension	7 716 190 097
External 600mm 80/125mm flue extension	7 716 190 098
External 100/150mm 90° bend (black)	7 716 190 096
Support bracket for 80/125mm flues	7 716 191 174
Flue damper	7 716 190 101