

# Terrain Soil System

## 100P Soil system - PVC-u (push-fit)



82, 110 and 160mm PVC-u soil pipes and fittings for push-fit jointing:

- Saves time and labour costs
- Also for use with Terrain roof outlets for rainwater drainage

82, 110 and 160mm pipe and fittings (Fig.2)				
A	D	E	T1	T2
82	100	50	3.2	3.2
110	132	58	3.4	3.4
160	189	70	4.1	4.1

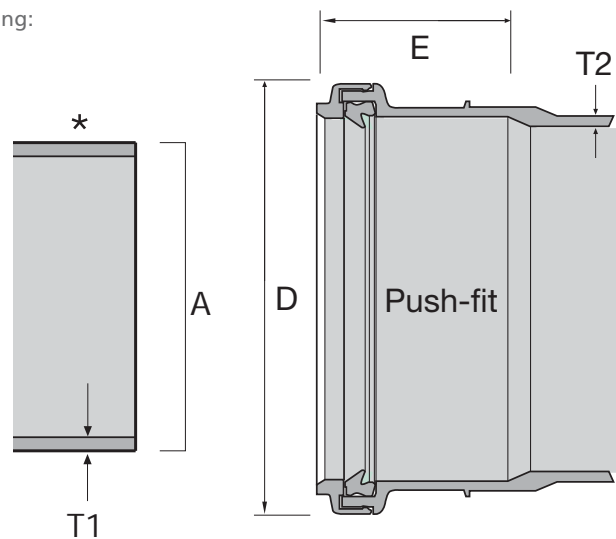


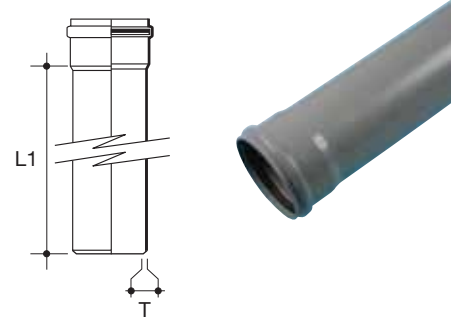
Fig. 2

\* Some Terrain fittings feature a groove here, as shown on the underside.

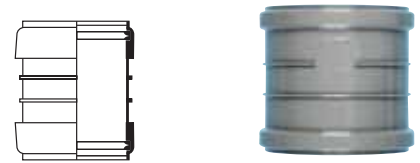
# 100 Push-Fit

## Terrain soil system - 100 push-fit

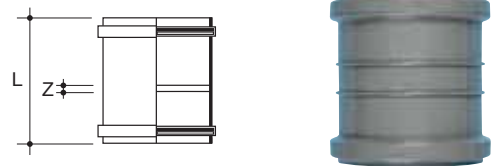
Size (mm)	L1	T (min)	Colour	Code
<b>SOIL PIPE - single socket ended</b>				
82	3m	3.2	G	100P.3.30
82	4m	3.2	G	100P.3.40
110	3m	3.2	GBW	100P.4.30
110	4m	3.2	GBW	100P.4.40
160	3m	3.3	G	100P.6.30
160	3m	3.3	G	100P.6.40



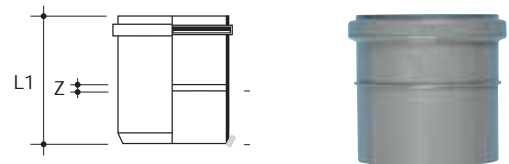
Size (mm)	Colour	Code
<b>SLIP COUPLER DOUBLE SOCKET</b>		
110	G	111.SP4



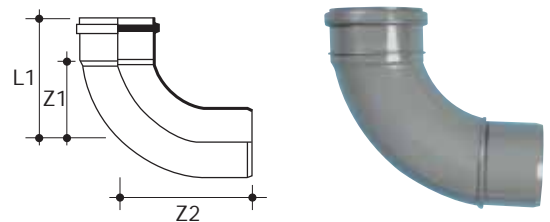
Size (mm)	L	Z	Colour	Code
<b>STRAIGHT COUPLER DOUBLE SOCKET - with central stop</b>				
82	103	6	G	110P.3
110	129	6	GBWR	110P.4
160	188	10	G	110P.6



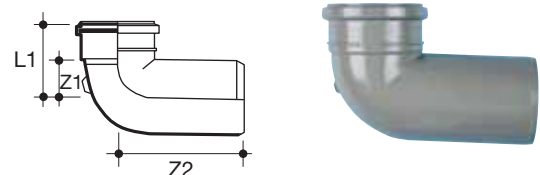
Size (mm)	L1	L2	Z	Colour	Code
<b>PIPE END SOCKET/SPIGOT</b>					
82	91	39	4	G	111P.3
110	107	48	3	GBW	111P.4



Size (mm)	Angle°	L1	Z1	Z2	Colour	Code
<b>SWEPT BEND SPIGOT/SOCKET</b>						
82	92½	149	109	161	G	101P.3.92
110	92½	142	85	145	GBW	101P.4.92
160	92½	215	135	215	G	101P.6.92
110	112½	152	104	184	G	101P.4.112
82	135	76	36	89	G	107P.3.135
110	135	89	42	119	GBW	107P.4.135
160	135	140	60	130	G	107P.6.135

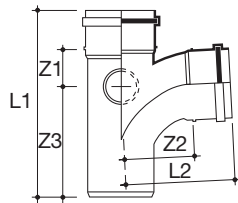


Size (mm)	Angle°	L1	Z1	Z2	Colour	Code
<b>TIGHT RADIUS BEND SPIGOT/SOCKET</b>						
110	92½	113	65	197	G	107P.4.92

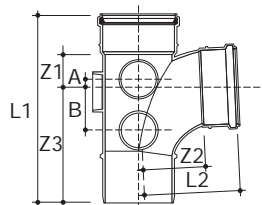


# Terrain Soil System

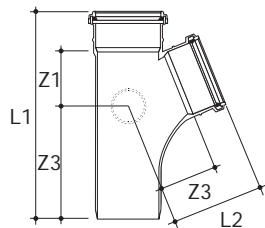
## Terrain soil system - 100 push-fit



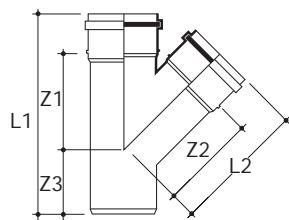
Size (mm)	Angle°	L1	L1	Z1	Z2	Z3	Colour	Code
<b>SINGLE BRANCH SPIGOT OUTLET - with spigot bosses, 2 boss horns</b>								
82	92½	225	125	54	85	131	G	104P.3.92



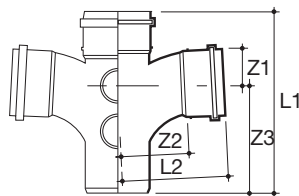
Size (mm)	Angle°	L1	L1	Z1	Z2	Z3	A	B	Colour	Code
<b>SINGLE BRANCH SPIGOT OUTLET - with spigot bosses, 5 boss horns</b>										
110	92½	278	152	58	96	164	19	57	GBW	104P.4.92
160	92½	440	242	90	155	260			G	104P.6.92



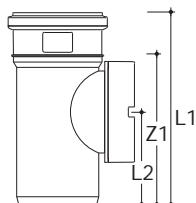
Size (mm)	Angle°	L1	L1	Z1	Z2	Z3	Colour	Code
<b>SINGLE BRANCH SPIGOT OUTLET - with spigot bosses, 2 boss horns</b>								
110	112½	349	165	95	95	184	G	104P.4.112



Size (mm)	Angle°	L1	L1	Z1	Z2	Z3	Colour	Code
<b>SINGLE EQUAL BRANCH PLAIN - no boss connections</b>								
110	135	328	215	168	168	113	G	104P.4.135



Size (mm)	Angle°	L1	L1	Z1	Z2	Z3	Colour	Code
<b>DOUBLE EQUAL BRANCH SPIGOT OUTLET - 4 boss connections</b>								
110	92½	287	172	66	124	173	GB	106P.4.92

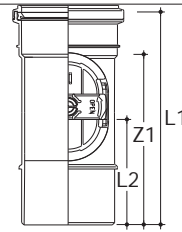


Size (mm)	L1	L2	Z1	Colour	Code
<b>ACCESS PIPE AND COVER SINGLE SOCKET</b>					
82	193	97	153	G	139P.3

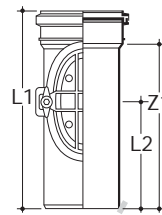
# 100 Push-Fit

## Terrain soil system - 100 push-fit

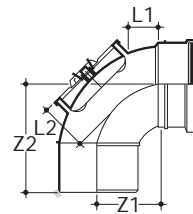
Size (mm)	L1	L2	Z1	Colour	Code
<b>ACCESS PIPE AND COVER SINGLE SOCKET</b>					
110	222	114	175	GB	139P.4



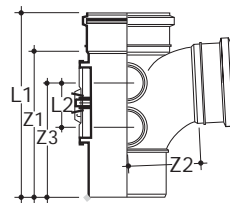
Size (mm)	L1	L2	Z1	Colour	Code
<b>ACCESS PIPE AND COVER SINGLE SOCKET</b>					
Access door aperture size: 172 x 130mm diameter - secured by 2 screws					
160	366	198	305	G	139P.6



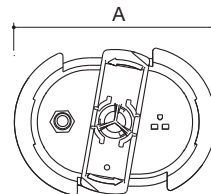
Size (mm)	Angle°	L1	L2	Z1	Z2	Colour	Code
<b>ACCESS BEND SINGLE SOCKET</b> Access door aperture size: 110 x 80mm diameter - secured by locking mechanism (use self tapping screw for anti-vandal locking)							
110	92½	41	69	91	157	GB	103P.4.92



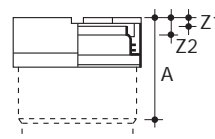
Size (mm)	L1	L2	Z1	Z2	Z3	Colour	Code
<b>ACCESS BEND SINGLE EQUAL BRANCH SINGLE OUTLET</b> - with waste bosses, 4 boss horns. Access door aperture size: 114 x 80mm diameter - secured by locking mechanism (use self tapping screw for anti-vandal locking)							
110	136	74	87	105	172	G	105P.4.92



A	Colour	Code
<b>ACCESS DOOR WITH TEST NIPPLE</b> - standard oval access door with test nipple for manometer connection		
127	GBWR	6592/DVW



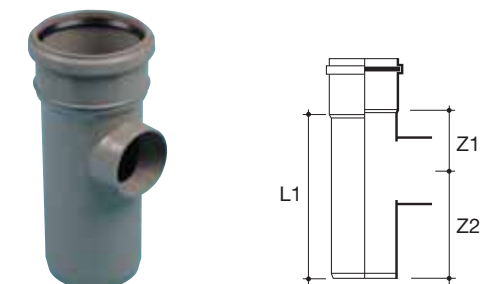
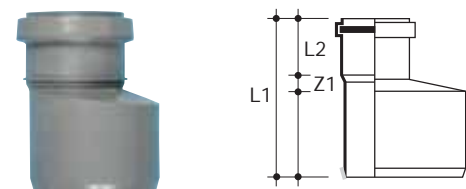
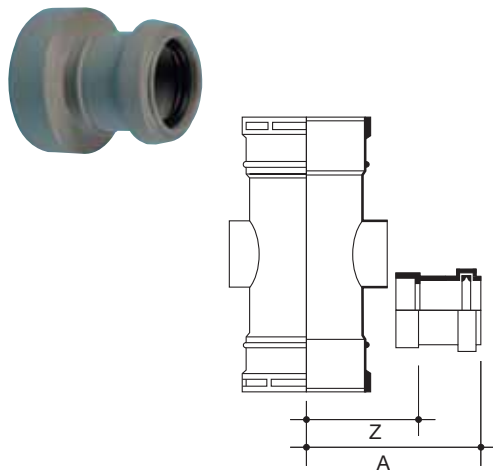
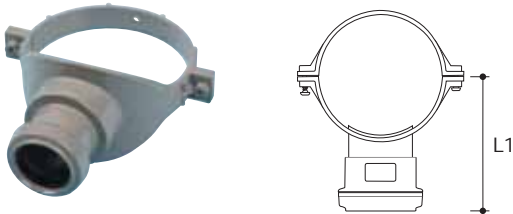
Size (mm)	A	Z1	Z2	Colour	Code
<b>ACCESS PIPE AND COVER SINGLE SOCKET</b>					
Access door aperture size: 172 x 130mm diameter - secured by 2 screws					
82	81	26	13	G	136P.3
110	102	34	10	GBW	136P.4
160	134	34	10	G	136P.6



# Terrain Soil System

## Terrain soil system - 100 push-fit

NEW - Now allows back-to-back dual connection of similar and/or dissimilar pipe diameters.



Size (mm)	L1	Hole Saw Ø	Colour	Code
<b>STRAP-ON BOSS - for 32mm waste pipe</b>				
110/32	116	60 (part no. 9105.237)	GBW	112P.4.125

Size (mm)	L1	Hole Saw Ø	Colour	Code
<b>STRAP-ON BOSS - for 40mm waste pipe</b>				
110/40	116	60 (part no. 9105.237)	GBW	112P.4.15

Size (mm)	L1	Hole Saw Ø	Colour	Code
<b>STRAP-ON BOSS - for 50mm waste pipe</b>				
110/50	120	60 (part no. 9105.237)	GBW	112P.4.2

Use on Stack Size (mm)	A†	Z†	Hole Saw Ø	Colour	Code
<b>BOSS ADAPTORS STRAIGHT - for 32mm waste pipe</b>					
82	107	61	51	GBW	117.125
110	119	74	51	GBW	117.125
160	144	99	51	GBW	117.125

Use on Stack Size (mm)	A†	Z†	Hole Saw Ø	Colour	Code
<b>BOSS ADAPTORS STRAIGHT - for 40mm waste pipe</b>					
82	107	61	51	GBWR	117.15
110	119	74	51	GBWR	117.15
160	144	99	51	GBWR	117.15

Use on Stack Size (mm)	A†	Z†	Hole Saw Ø	Colour	Code
<b>BOSS ADAPTORS STRAIGHT - for 50mm waste pipe</b>					
82	107	61	51	GBW	117.2
110	119	74	51	GBW	117.2
160	144	99	51	GBW	117.2

Size (mm)	Z1	Hole Saw Ø	Colour	Code
<b>ADAPTOR SADDLES - for 40mm waste pipe</b>				
110/40	29	51	G	115P.4

Size (mm)	L1	L2	Z1	Colour	Code
<b>REDUCERS</b>					
82/50	117	44	15	G	124P.3.2
110/50	136	45	16	GB	124P.4.2
110/82	140	55	18	G	124P.4.3
160/110	233	75	44	G	124P.6.4

Size (mm)	Z1	Z2	Z3	Colour	Code
<b>SHORT BOSSSED PIPE</b>					
82	145	48	97	G	123P.3
110	212	43	110	GB	123P.4

All dimensions in mm unless otherwise stated

# 100 Push-Fit

## Terrain soil system - 100 push-fit

Size (mm)	Z1	Z2	Z3	Z4	Z5	Colour	Code
<b>FOUR-WAY BOSS PIPE PUSH-FIT SOCKET/SPIGOT - 2 boss horns</b>							
110	44	40	56	55	59	G	120P.412.2

Size (mm)	L1	L2	Z1	Colour	Code
<b>TRIPLE BOSS COLLAR</b>					
110	58	95	125	GB	120P.4.15

Size (mm)	L	Colour	Code
<b>SOCKET PLUG</b>			
110	69	GBW	130.4
160	92	G	130.6

Size (mm)	L1	L2	L3	L4	Z1	Colour	Code
<b>UNIVERSAL SOIL MANIFOLD</b> - for push-fit waste connections, for solvent waste connections see page 11							
110	228	189	199	217	105	G	119P.4.15

For connection of BS 5254/BS 5255 32mm and 40mm waste pipes at floor level. Incorporates 4 inlets to accept 32mm or 40mm waste pipes without need for adaptors. Use with Swivel Elbow or Swept Bend. Complete with 4 sealing gaskets and 3 removable plugs.  
For solvent waste connections see page 11.

Refer to page 12 for bracketing options.

Bracketry available to both solvent weld and push-fit systems.

