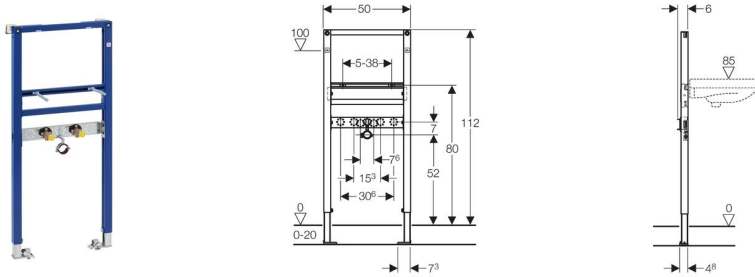


## Geberit Duofix frame for washbasin, H112



### Application purpose

- For installation of a wall-hung washbasin with bolt fixings set at between 50 and 380 mm centres (with accessories 111.868.00.1 fastening distance can extend from 380 - 580 mm)
- For installation in a room-high Duofix system wall
- For installation in a load bearing stud wall
- For a screed of 0 - 200 mm

### Characteristics

- Frame height 1120 mm
- Frame with holes  $\varnothing$  9 mm for fastening in wood frame construction
- Washbasin fastening distance 50 - 380 mm
- Galvanised leg supports, steplessly adjustable 0 - 200 mm
- Self-supporting
- Frame with C profile 40/40 mm
- Powder-coated frame, ultramarine blue
- Feet can be retracted 5 cm
- Rotating foot plate, for installation in UW50 and UW75 profiles
- Tap connection plate with adjustable height and depth
- Fastening for outlet bend, adjustable height
- With wall brackets to allow up to a 200 mm duct. For larger ducts up to 400 mm use extension bolts 111.887.00.1
- With backplate elbows and chrome isolating valves with 3/8" BSP connection

### Scope of delivery

- 2 water connections R 1/2"
- 2 angle stop valves R 1/2"
- 2 Duofix PreWall brackets for system
- 2 threaded rods M10 for ceramics fastening
- Fastening material

### Article

Article no.	PU1
111.495.00.1	1