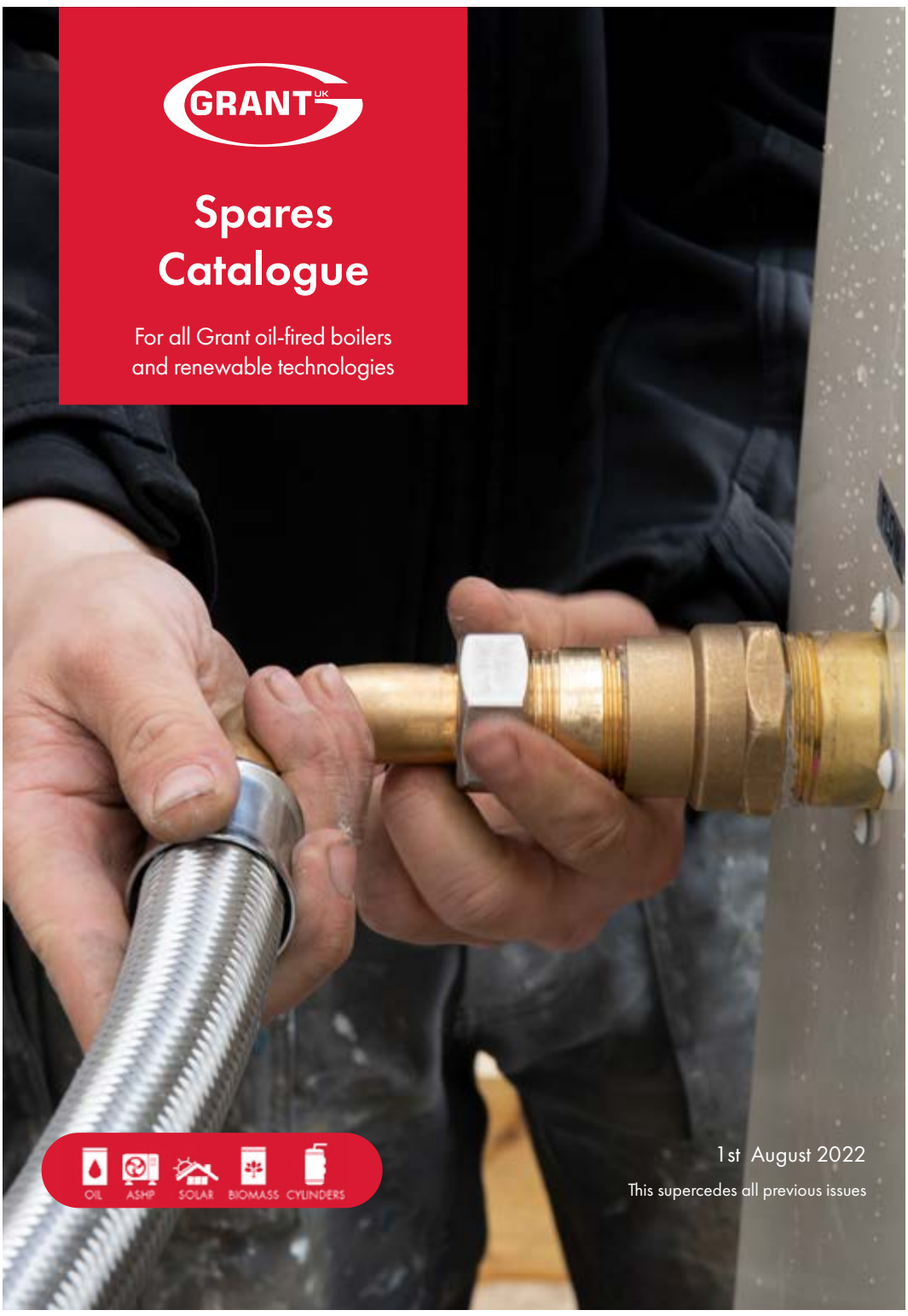




Spares Catalogue

For all Grant oil-fired boilers
and renewable technologies



OIL



ASHP



SOLAR



BIOMASS



CYLINDERS

1st August 2022

This supercedes all previous issues

Riello Spares

| | |
|---------------------|---------|
| Burners | 4 - 7 |
| Riello G5 | 8 - 15 |
| Riello RDB BX | 16 - 18 |
| Riello RDB | 19 - 30 |
| Riello RDB BLU | 31 - 38 |
| Riello RDB BLU IONO | 39 - 45 |

Oil Boilers

| | |
|------------------------|-----------|
| Ecoflam Burners | 47 |
| Ecoflam Max1 | 48 - 53 |
| Ecoflam Max1 LN | 54 - 59 |
| Sterling | 60 - 64 |
| Baffles & access doors | 65 - 77 |
| Circulating pumps | 78 |
| Control panel spares | 80 - 84 |
| Switches | 85 - 87 |
| Expansion vessels | 88 - 91 |
| Gauges | 92 |
| Hoses & filling loops | 93 - 95 |
| Stats | 96 - 97 |
| Valves, vents & drains | 98 - 101 |
| Flue guards | 102 |
| Miscellaneous | 103 - 109 |
| Nozzles | 110 - 111 |
| Fire Valves | 112 |

Solar

| | |
|--------------|-----------|
| Solar spares | 113 - 115 |
|--------------|-----------|

Cylinders

| | |
|-----------------|-----------|
| Cylinder spares | 116 - 119 |
|-----------------|-----------|

Air Source Heat Pumps

| | |
|---------------------------|-----------|
| Controllers & accessories | 120 - 122 |
| Capacitors | 123 - 124 |
| Motors | 125 - 126 |
| Compressors | 127 - 129 |
| Pumps | 130 - 131 |
| PCB boards | 132 - 133 |
| Valves | 134 - 137 |
| Miscellaneous | 138 - 146 |

Mag One Filter

| | |
|----------------|-----|
| Mag One spares | 147 |
|----------------|-----|

Biomass

| | |
|------------------------|-----------|
| Spira burner spares | 148 - 153 |
| Spira boiler spares | 154 - 162 |
| Spira hopper spares | 163 |
| Spira augers & burners | 164 |
| SpiraVac spares | 165 - 169 |
| Vecta Spares | 170 - 175 |

To download the latest Spares Price List please head to www.grantuk.com/professional/support/manuals-brochures or scan the QR code below.



RDB1 NEUTRALBURNER

Riello RDB1 Neutral Burner



Riello Part: 3513008

RDB2 NEUTRALBURNER

Riello RDB2 Neutral Burner



Riello Part: 3513603

RDB3513610

Riello RDB Burner (standard yellow flame models)



Suitable for:
Vortex 26-36kW
Vortex Combi 36kW

RDB3514501

Riello RDB Burner (standard yellow flame models)



Suitable for:
Vortex 36-46kW

RDB3 NEUTRALBURNER

Riello RDB3 Neutral Burner



Riello Part: 3748950

RDB4 NEUTRALBURNER

Riello RDB4 Neutral Burner



Riello Part: 3748850

RDB3748920

Riello RDB Burner



Suitable for:
Vortex 46-58kW

RDB3748921

Riello RDB Burner



Suitable for:
Vortex 58-70kW

RDB3514104

Riello RDB Burner (standard yellow flame models)



Suitable for:
Vortex 15-21kW
Vortex Combi 21kW

RDB3514204

Riello RDB Burner (standard yellow flame models)



Suitable for:
Vortex 15-26kW
Vortex Combi 26kW

RDB20147321

Riello RDB Burner (Low NOx models)



Suitable for:
Vortex 15-21kW
Vortex Combi 21kW

RDB20094977

Riello RDB Burner (Low NOx models)



Suitable for:
Vortex 15-26kW

RDB20147322

Riello RDB Burner (Low NOx models)



Suitable for:
Vortex Combi 26kW

RDB20147346

Riello RDB Burner (Low NOx models)



Suitable for:
Vortex 21-26kW

VTXBFBURNER26

Riello RDB2.2 BG1 BLU Burner



Suitable for:
VortexBlue 21-26kW (pre 24.06.2021)

VTXBFBURNER36

Riello RDB2.2 BG3 BLU Burner



Suitable for:
VortexBlue 26-36kW (pre 07.12.2021)

RDB20109931

Riello RDB Burner (Low NOx models)



Suitable for:
Vortex 26-36kW

RDB20110334

Riello RDB Burner (Low NOx models)



Suitable for:
Vortex 36-46kW

RDBBF20173342

Riello RDB2.2 BG1 BLU INONO Burner



Suitable for:
VortexBlue 15-21kW (post 25.11.2021)

RDBBF20173343

Riello RDB2.2 BG2 BLU INONO Burner



Suitable for:
VortexBlue 21-26kW (post 24.06.2021)

RDB20147350

Riello RDB Burner (Low NOx models)



Suitable for:
Vortex Combi 36kW

VTXBFBURNER21

Riello RDB2.2 BG1 BLU Burner



Suitable for:
VortexBlue 15-21kW (pre 25.11.2021)

RDBBF20173345

Riello RDB2.2 BG3 BLU INONO Burner

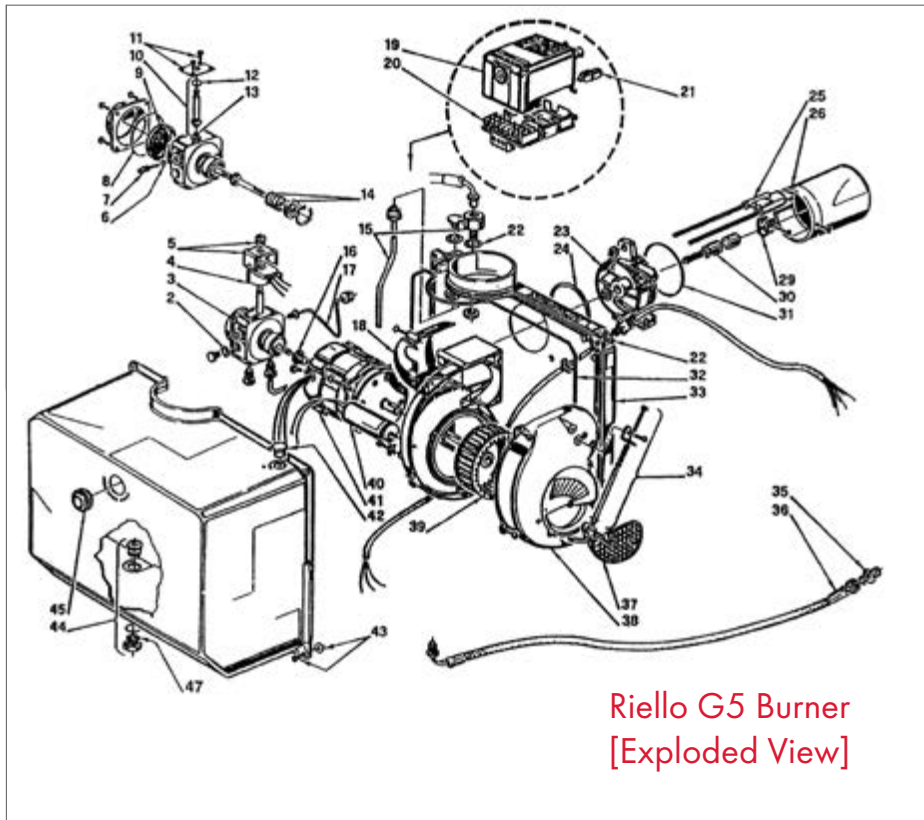


Suitable for:
VortexBlue 26-36kW (post 07.12.2021)

Z20030780

Riello R40 G3 Burner





Z3002279
Solenoid Coil



Diagram Index: 4
Riello Part: 3002279

Z3007169
O-Ring Regulator (10 pack)




Diagram Index: 6
Riello Part: 3007169

Z3007202
Oil Pressure Regulator



Diagram Index: 7
Riello Part: 3007202

Z3007175
Oil Pump 'O' Rings (10 pack)

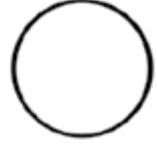


Diagram Index: 8
Riello Part: 3007175

Z20031996
Oil Pump




Diagram Index: 3
Riello Part: 20031996

Z3005721
Electrodes (R40, G3, G5)



Riello Part: 3005721

Z3005719
Pump Filter



Diagram Index: 9
Riello Part: 3005719

Z3020437
Valve Oil Pump Solenoid



Diagram Index: 10
Riello Part: 3020437

Z3000439

Oil Pump Seal

Diagram Index: 14
Riello Part: 3000439**Z3007623**

Tube Assembly Pump Inlet

Diagram Index: 15
Riello Part: 3007623**Z20132573**

Photocell

Diagram Index: 21
Riello Part: 20132573**Z3007796**

Collar Burner Head Mounting

Diagram Index: 23
Riello Part: 3007796**Z3000443**

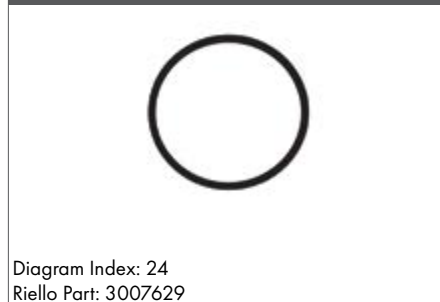
Drive Coupling (10 pack)

Diagram Index: 16
Riello Part: 3000443**Z3007502**

Oil Pump Outlet Tube

Diagram Index: 17
Riello Part: 3007502**Z3007629**

O-Ring Collar

Diagram Index: 24
Riello Part: 3007629**Z3007503**

Electrode Assembly

Diagram Index: 25
Riello Part: 3007503**Z3001156**

Control Box 530E

Diagram Index: 19
Riello Part: 3001156**Z3002278**

Control Box Base

Diagram Index: 20
Riello Part: 3002278**Z3008446**

Combustion Head G3Q 40/60

Diagram Index: 26
Riello Part: 3008446**Z3007631**

Combustion Head GS3 110/140

Diagram Index: 26
Riello Part: 3007631

For blast tube retaining screws see page 18

Z3006001
Combustion Head G3B 50/90



Diagram Index: 26
Riello Part: 3006001

Z3005775
Combustion Head G2 Compact



Diagram Index: 26
Riello Part: 3005775

Z3007630
Burner Cover Seal



Diagram Index: 32
Riello Part: 3007630

Z3003602
Adaptor Oil Line 3/8 x 1/4



Diagram Index: 35
Riello Part: 3003602

Z3005787
Gasket Flange



Riello Part: 3005787

Z3008636
Standard Flange (thick)



Riello Part: 3008636

RBS36
Flexi Oil Hose 3/8 x 1/4




Diagram Index: 36

Z3005708
Fan Impellar



Riello Part: 3005708

Z3005724
Nozzle Holder



Diagram Index: 30
Riello Part: 3005724

Z3007178
Combustion Head O-Ring (10 pack)

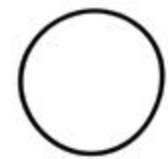


Diagram Index: 31
Riello Part: 3007178

Z20087025
Capacitor P2 4uF



Diagram Index: 40
Riello Part: 20087025

Z3007971
Motor



Diagram Index: 41
Riello Part: 3007971

Z3007913

Combustion Head Ring G3Q & G3N



Riello Part: 3007913

Z20029299

Oil Pump By-Pass Plug (pack of 5)



Riello Part: 2623539

Z3005971

Flange Gasket



Riello Part: 3005971

Z3007132

O-Rings (10 pack)



Riello Part: 3007132

Z3006911

Short Hydraulic Ram



Riello Part: 3006911

Z3020444

Long Hydraulic Ram



Riello Part: 3020444

Z3008647

Air Damper Assembly



Riello Part: 3008647

Z3006552

Electrode Clamp/ Screw (10 pack)



Riello Part: 3006552

Z3007798

Thin Mounting Flange



Riello Part: 3007798

RBS86

Long Life Reinforced Oil Line (rubber)



Z3000681

Air Damper Regulator



Riello Part: 3000681

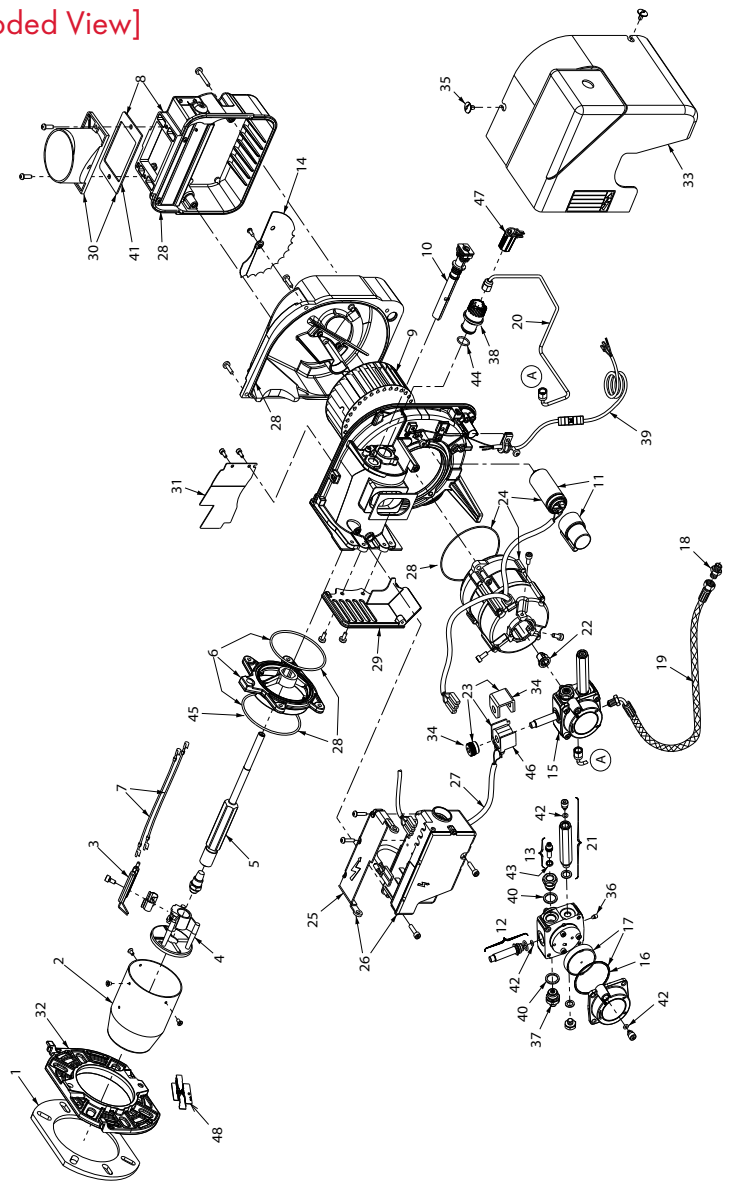
Z3007208

Air Intake



Riello Part: 3007208

RDB2.2 BX
[Exploded View]



Z20147320

Blast Tube



Diagram Index: 2
Riello Part: 20147320

Z20018545

Electrodes (15-26kW)



Diagram Index: 2
Riello Part: 20018545

Z20018693

Electrodes (26-46kW)



Diagram Index: 2
Riello Part: 20018693

Z20139837

Diffuser Disc (15-26kW)



Diagram Index: 4
Riello Part: 20139837

Z20133586

Diffuser Disc (26-46kW)



Diagram Index: 4
Riello Part: 20133586

Z20133588

Nozzle Holder



Diagram Index: 5
Riello Part: 20133588

Z20134372

Knob



Diagram Index: 38
Riello Part: 20134372

RBS36B10

Blast Tube Retaining Screws (pack of 10)



Z20119098

RDB Cover Fixing Screws (pack of 10)



ZLOWNOXGAUGE

Burner Gauge



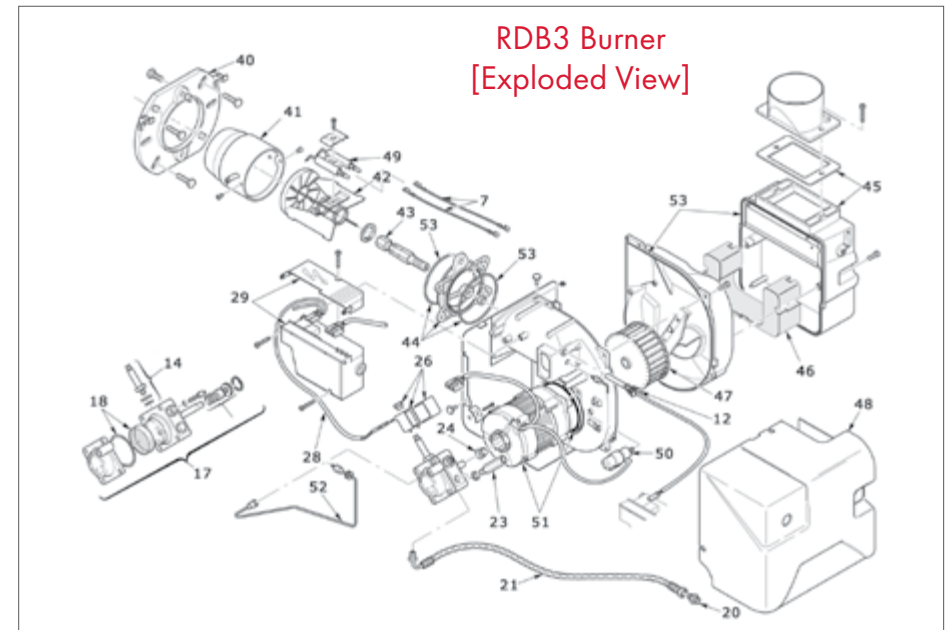
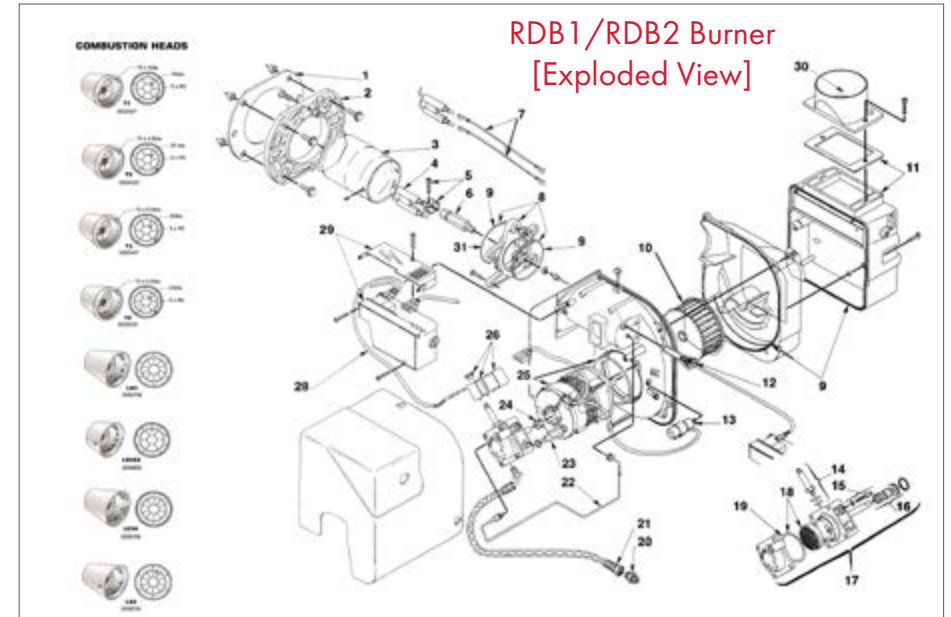
Z3012868

BF Blast tube O Ring (Pack of 5)



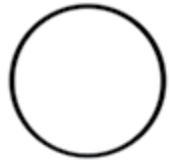
Z3012868X

BF Blast tube O Ring



Z3007175

Oil Pump O-Rings (10 pack)

Diagram Index: 19
Riello Part: 3007175**Z20030953**

Oil Pump

Diagram Index: 17
Riello Part: 20030953**Z3008964**

Motor RDB3.2

Diagram Index: 51
Riello Part: 3008964**Z3008647**

Air Damper Assembly RDB1 & RDB2

Diagram Index: 11
Riello Part: 3008647**Z3000439**

Oil Pump Seal

Diagram Index: 16
Riello Part: 3000439**Z20029299**

Oil Pump By-Pass Plug (pack of 5)



Riello Part: 20029299

Z3008839

Air Damper Assembly RDB3.2

Diagram Index: 45
Riello Part: 3008839**Z3008652**

Control Box 535

Diagram Index: 29
Riello Part: 3008652**Z3020436**

Pump Filter & O'Ring



Riello Part: 3020436

Z20071577

Motor (with P2 capacitor)

Diagram Index: 25
Riello Part: 20071577**Z3008644**

Supply Tube RDB1 & RDB2

Diagram Index: 22
Riello Part: 3008644**Z3008961**

Supply Tube RDB3.2

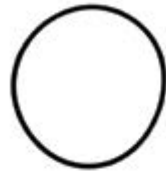
Diagram Index: 52
Riello Part: 3008961

Z20132526

Photodiode (analogue)

Diagram Index: 12
Riello Part: 20132526**Z3007178**

Combustion Head O-Ring (10 pack)

Diagram Index: 31
Riello Part: 3007178**Z3008724**

Combustion Head LD2

Diagram Index: 3
Riello Part: 3008724**Z3008859**

Combustion Head LD2SX (EF50/70)

Diagram Index: 3
Riello Part: 3008859**Z3008878**

Seal Kit (not suitable for blast tube)

Diagram Index: 9
Riello Part: 3008878**Z3008963**

Seal Kit RDB3.2

Diagram Index: 53
Riello Part: 3008963**Z3008768**

Combustion Head LD3 (70/90)

Diagram Index: 3
Riello Part: 3008768**Z3008769**

Combustion Head LD3A (90/120, 110/140)

Diagram Index: 3
Riello Part: 3008769**Z3007132**

O-Rings (10 pack)



Riello Part: 3007132

Z3002572

Combustion Head RDB3.2

Diagram Index: 41
Riello Part: 3002572**Z3002507**

Combustion Head T1

Diagram Index: 3
Riello Part: 3002507**Z3002423**

Combustion Head T2

Diagram Index: 3
Riello Part: 3002423

Z3002447

Combustion Head T3

Diagram Index: 3
Riello Part: 3002447**Z3002533**

Combustion Head T5

Diagram Index: 3
Riello Part: 3002533**Z3008648**

Solenoid Coil

Diagram Index: 26
Riello Part: 3008648**Z3007871**

Solenoid Needle Valve

Diagram Index: 14
Riello Part: 3007871**Z3008861**

Nozzle Holder (EF50/70)

Diagram Index: 6
Riello Part: 3008861**Z3008642**

Nozzle Holder

Diagram Index: 6
Riello Part: 3008642**Z3008851**

Solenoid Lead

Diagram Index: 28
Riello Part: 3008851**Z3008875**

Electrode Screw (Euroflame 50/70)



Riello Part: 3008875

Z3002570

Nozzle Holder RDB3.2

Diagram Index: 43
Riello Part: 3002570**Z3007176**

O-Ring Solenoid Valve (10 pack)



Riello Part: 3007029

Z3006552

Electrode Clamp/ Screw (10 pack)



Riello Part: 3006552

Z3008876

Pressure Gauge Connector

Diagram Index: 23
Riello Part: 3008876

Z3007513

Electrode Assembly RDB1 & RDB2

Diagram Index: 4
Riello Part: 3007513**Z3020121**

Electrode Assembly RDB3.2

Diagram Index: 49
Riello Part: 3020121**Z3005799**

Fan Impellar RDB3.2

Diagram Index: 47
Riello Part: 3005799**Z3005787**

Gasket Flange

Diagram Index: 1
Riello Part: 3005787**Z3008860**

Electrode Group (EF50/70)

Diagram Index: 4
Riello Part: 3008860**Z3005708**

Fan Impellar RDB1

Diagram Index: 10
Riello Part: 3005708**Z3005795**

Gasket RDB3.2



Riello Part:3005795

Z3007798

Thin Mounting Flange (EF50/70)

Diagram Index: 2
Riello Part: 3007798**Z3005788**

Fan Impellar RDB2.1/ RDB2.2

Diagram Index: 10
Riello Part: 3005788**Z3008645**

Fan Impellar RDB2

Diagram Index: 10
Riello Part: 3008645**RBS36B10**

Blast Tube Retaining Screws (pack of 10)

**Z3008637**

Mounting Flange RDB3.2

Diagram Index: 40
Riello Part: 3008637

Z3008794

High Voltage Lead (6 pack)



Diagram Index: 7
Riello Part: 3008794

Z3000443

Drive Coupling (10 pack)



Diagram Index: 24
Riello Part: 3000443

Z3008643

Collar Burner Head Mounting



Diagram Index: 8
Riello Part: 3008643

Z3003602

Adaptor Oil Line 3/8 x 1/4



Diagram Index: 20
Riello Part: 3003602

Z20087035

Capacitor P2 4uF



Diagram Index: 13
Riello Part: 20087035

Z20081251

Capacitor P2 5uF RDB3.2



Diagram Index: 50
Riello Part: 20081251

RBS36

Flexi Oil Hose 900mm 3/8 M x 1/4 F



Diagram Index: 21

RBS86

Long-Life Reinforced Oil Line (rubber)



Z20071576

Capacitor P2 4.5uF (new motor)



Diagram Index: 13
Riello Part: 20071576

Z3008957

Collar RDB3.2



Diagram Index: 44
Riello Part: 3008957

Z3062774

Air Snorkel Spigot



Diagram Index: 30
Riello Part: 3062774

Z3002571

Diffuser Disc RDB3.2



Diagram Index: 42
Riello Part: 3002571

Z2880584

Burner Plug (all Vortex Combis post Dec 14)



Riello Part:2880584

Z2880583

Burner Socket (all Vortex Combis (post Dec 14)



Riello Part: 2880583

Z3008879

Cover RDB1 & RDB2



Diagram Index: 48
Riello Part: 3008879

Z3008962

Cover RDB3.2



Diagram Index: 48
Riello Part: 3008962

Z20119098

RDB Cover Fixing Screws (pack of 10)



Z20117411

Gasket (36kW)



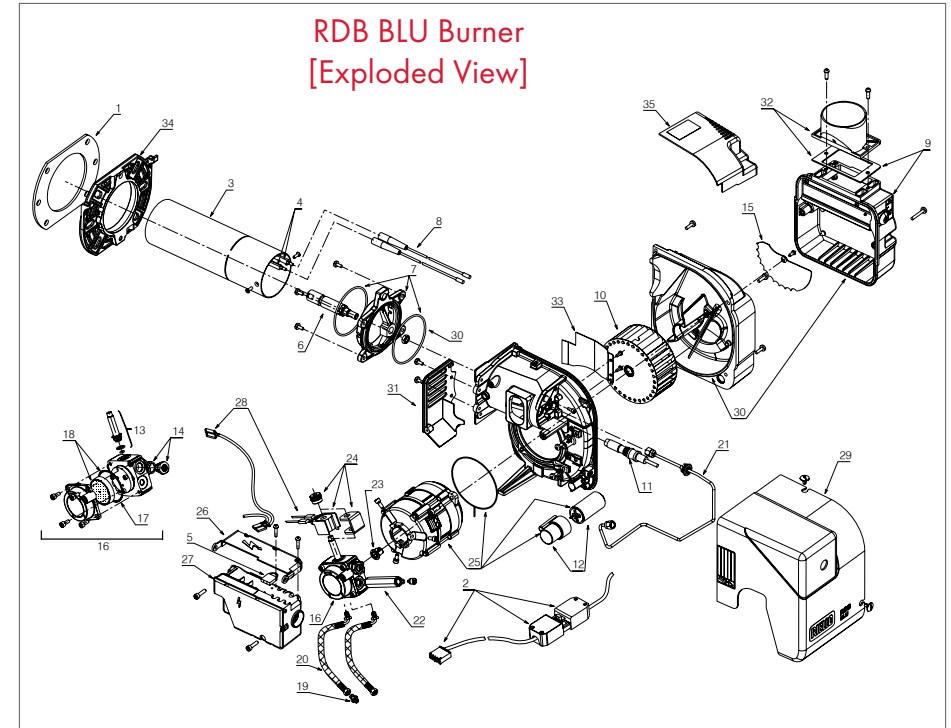
Diagram Index: 1
Riello Part: 20117411

Z3005787

Gasket (21kw, 26kW)



Diagram Index: 1
Riello Part: 3005787



Z20117417

4-Pin Connector (26kW, 36kW)



Diagram Index: 2
Riello Part: 20117417

Z20117432

4-Pin Connector (21kW)



Diagram Index: 2
Riello Part: 20117432

Z20045862

Pre-heater jumper link (10 pack)



Diagram Index: 5
Riello Part: 20045862

Z20117459

Nozzle Holder (21kW, 26kW)



Diagram Index: 6
Riello Part: 20117459

Z20117435

Combustion Head - BG1 (21kW)



Diagram Index: 3
Riello Part: 20117435

Z20120985

Combustion Head - BG2 (26kW)



Diagram Index: 3
Riello Part: 20120985

Z20117461

Nozzle Holder (36kW)



Diagram Index: 6
Riello Part: 20117461

Z20125427

Collar BG1 (21kW)



Diagram Index: 7
Riello Part: 20117472

Z20117437

Combustion Head - BG3 (36kW)



Diagram Index: 3
Riello Part: 20117437

Z20117455

Ignition Electrodes



Diagram Index: 4
Riello Part: 20117455

Z20125428

Collar BG2 & BG3 (26kW, 36kW)



Diagram Index: 7
Riello Part: 20125428

Z20105111

Ignition HT Lead (pack of 2)



Diagram Index: 8
Riello Part: 20105111

Z3008647

Air Damper Assembly (21kW)



Diagram Index: 9
Riello Part: 3008647

Z3008839

Air Damper Assembly (26kW, 36kW)



Diagram Index: 9
Riello Part: 3008839

Z20094349

Air Adjuster Disc (21kW)



Diagram Index: 15
Riello Part: 20094349

Z3007175

O-Ring (pump filter) 10pk

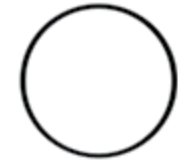


Diagram Index: 17
Riello Part: 3007175

Z3005788

Fan



Diagram Index: 10
Riello Part: 3005788

Z20095126

UV Sensor



Diagram Index: 11
Riello Part: 20095126

Z20030953

Oil Pump



Diagram Index: 16
Riello Part: 20030953

RBS36

Flexible Oil Hose



Diagram Index: 20

Z20071576

Capacitor 4.5uF



Diagram Index: 12
Riello Part: 20071576

Z20032135

Pump Pressure Regulator



Diagram Index: 14
Riello Part: 20032135

Z20117488

Oil Pipe



Diagram Index: 21
Riello Part: 20117488

Z3008876

Pressure Gauge Connector



Diagram Index: 22
Riello Part: 3008876

Z3000443

Oil Pump Drive Coupling (10 pack)

Diagram Index: 23
Riello Part: 3000443**Z3008648**

Solenoid Coil

Diagram Index: 24
Riello Part: 3008648**Z20117497**

Cover

Diagram Index: 29
Riello Part: 20117497**Z3008878**

O-Ring Kit (not suitable for blast tube)

Diagram Index: 30
Riello Part: 3008878**Z20071577**

Motor (with P2 capacitor)

Diagram Index: 25
Riello Part: 20071577**Z20094351**

Control Box Cover

Diagram Index: 26
Riello Part: 20094351**Z3020306**

Front Shield

Diagram Index: 31
Riello Part: 3020306**Z3020281**

Air Intake - Balanced Flue

Diagram Index: 32
Riello Part: 3020281**Z20117694**

Control Box

Diagram Index: 27
Riello Part: 20117694**Z3008682**

Solenoid Coil Lead

Diagram Index: 28
Riello Part: 3008682**Z20117504**

Air Baffle (21kW, 26kW)

Diagram Index: 33
Riello Part: 20117504**Z20117506**

Air Baffle (36kW)

Diagram Index: 33
Riello Part: 20117506

Z20012046

Air Intake - Conventional Flue



Diagram Index: 35
Riello Part: 20012046

Z20119098

RDB Cover Fixing Screws (pack of 10)



Z20094352

Flange (36kW)



Diagram Index: 34
Riello Part: 20094352

Z3006384

Flange (21 kW, 26kW)



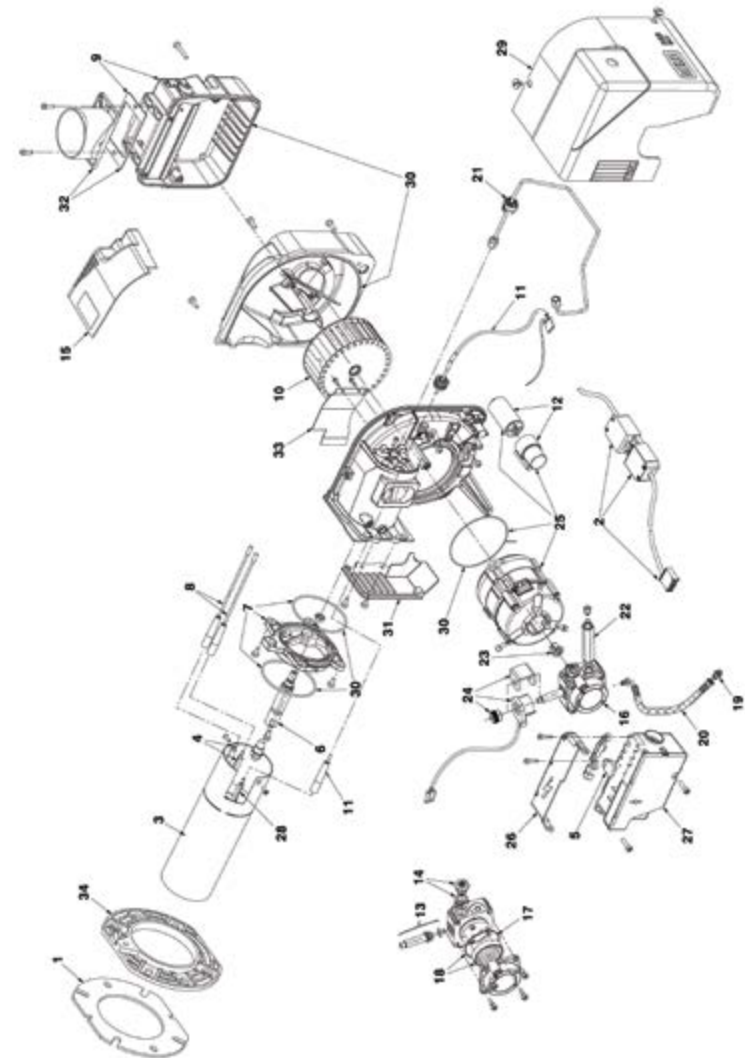
Diagram Index: 34
Riello Part: 3006384

RBS36B10

Blast Tube Retaining Screws (pack of 10)



RDB BLU INONO Burner
[Exploded View]



Z20117411

Gasket (21kW, 26kW, 36kW)



Diagram Index: 1
Riello Part: 20117411

Z20117432

4-Pin Connector (21kW)



Diagram Index: 2
Riello Part: 20117432

Z20117455

Ignition Electrodes



Diagram Index: 4
Riello Part: 20117455

Z20045862

Pre-heater jumper link (10 pack)



Diagram Index: 5
Riello Part: 20045862

Z20117417

4-Pin Connector (26kW, 36kW)



Diagram Index: 2
Riello Part: 20117417

Z20175374

Combustion Head (21kW)



Diagram Index: 3
Riello Part: 20175374

Z20117459

Nozzle Holder (21kW, 26kW, 36kW)



Diagram Index: 6
Riello Part: 20117459

Z20125427

Collar BG1 (21kW, 26kW, 36kW)



Diagram Index: 7
Riello Part: 20117472

Z20175375

Combustion Head (26kW)



Diagram Index: 3
Riello Part: 20175375

Z20175376

Combustion Head (36kW)



Diagram Index: 3
Riello Part: 20175376

Z20105111

Ignition HT Lead (pack of 2)



Diagram Index: 8
Riello Part: 20105111

Z3008647

Air Damper Assembly (21kW, 26kW)



Diagram Index: 9
Riello Part: 3008647

Z3008839

Air Damper Assembly RDB3.2 (36kW)



Diagram Index: 9
Riello Part: 3008839

Z3005788

Fan



Diagram Index: 10
Riello Part: 3005788

Z20030953

Oil Pump



Diagram Index: 16
Riello Part: 20030953

Z3007175

Oil Pump O-Rings (10 pack)

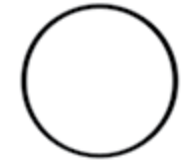


Diagram Index: 17
Riello Part: 3007175

Z20177875

Probe Connection



Diagram Index: 11
Riello Part: 20177875

Z20071576

Capacitor P2 4.5uF



Diagram Index: 12
Riello Part: 20071576

Z3020436

Pump Filter & O'Ring



Diagram Index: 18
Riello Part: 3020436

Z3009046

1/4 X 1/4 Hose Connector



Diagram Index: 19
Riello Part: 3009046

Z3007871

Solenoid Needle Valve



Diagram Index: 13
Riello Part: 3007871

Z20012046

Air Intake - Conventional Flue



Diagram Index: 15
Riello Part: 20012046

RBS36

Flexi Oil Hose 900mm 3/8 M x 1/4 F



Diagram Index: 20

Z3008876

Pressure Gauge Connector



Diagram Index: 22
Riello Part: 3008876

Z3000443

Oil Pump Drive Coupling (10 pack)



Diagram Index: 23
Riello Part: 3000443

Z20175038

Coil - Shell and Knob



Diagram Index: 24
Riello Part: 20175038

Z20180632

Ionization Probe (26kW, 36kW)



Diagram Index: 28
Riello Part: 20180632

Z20117497

Cover



Diagram Index: 29
Riello Part: 20117497

Z20071577

Motor (with P2 capacitor)



Diagram Index: 25
Riello Part: 20071577

Z20094351

Control Box Cover



Diagram Index: 26
Riello Part: 20094351

Z3020306

Front Shield



Diagram Index: 31
Riello Part: 3020306

Z3020281

Air Intake - Balanced Flue



Diagram Index: 32
Riello Part: 3020281

Z20165494

Control Box



Diagram Index: 27
Riello Part: 20165494

Z20180631

Ionization Probe (21kW)



Diagram Index: 28
Riello Part: 20180631

Z20117504

Air Baffle



Diagram Index: 33
Riello Part: 20117504

Z20094352

Flange



Diagram Index: 34
Riello Part: 20094352

Flexible learning anytime, anywhere, with the Grant eLearning Academy

Develop product and industry knowledge from the comfort of your own home with our expert trainers.

Training with Grant eLearning could not be easier!



Simply register using the unique enrolment key below



Access on-demand training at any time or enrol on to a real time instructor led course



Complete a course and automatically receive a certificate as evidence of your training



www.grantelearning.com
ENROLMENT KEY: GUKPRS0820

WMB12/16LN

Ecoflam MAX1 LN Burner



Suitable for:
Vortex Eco Wallhung 12-16kW (Low NOx)

WMB16/21LN

Ecoflam Max 1 LN Burner



Suitable for:
Vortex Eco Wallhung 16-21kW (Low NOx)

WMB12/16

Ecoflam MAX1 Burner



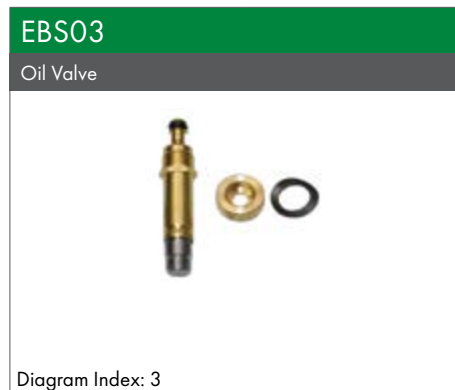
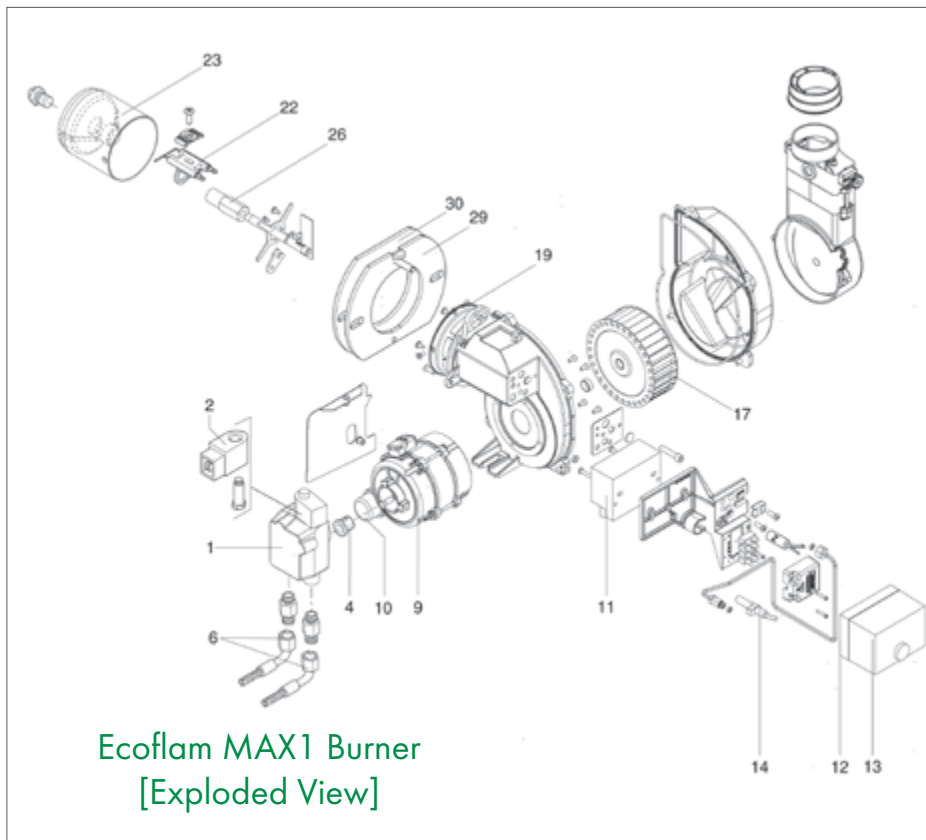
Suitable for:
Vortex Eco Wallhung 12-16kW

WMB16/21

Ecoflam MAX1 Burner



Suitable for:
Vortex Eco Wallhung 16-21kW



EBS09

Motor



Diagram Index: 9

EBS10

3uF Capacitor



Diagram Index: 10

EBS13

Control Box



Diagram Index: 13

EBS14

Photocell



Diagram Index: 14

EBS37

5uF Capacitor



Diagram Index: 10

EBS38

4uF Capacitor



Diagram Index: 10

EBS17

Fan



Diagram Index: 17

EBS19

Combustion Head O-Ring



Diagram Index: 19

EBS43

Continuous Operation Transformer



Diagram Index: 11

EBS12

Control Base Box



Diagram Index: 12

EBS20

Cover Air Inlet



Suitable for:
Vortex Eco Wallhung 12-16kW

EBS20A

Cover Air Inlet



Suitable for:
Vortex Eco Wallhung 16-21kW

EBS21

HT Lead



Diagram Index: 21

EBS22

Electrodes



Diagram Index: 22

EBS33

Oil Pipe



Diagram Index: 33

EBS34

Pipe Gasket



Diagram Index: 34

EBS23

Combustion Head



Diagram Index: 23

EBS26

Nozzle Holder



Diagram Index: 26

EBS36

Snorkel Adaptor



EBS29

Flange



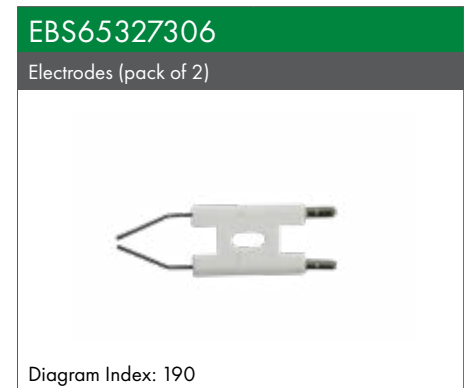
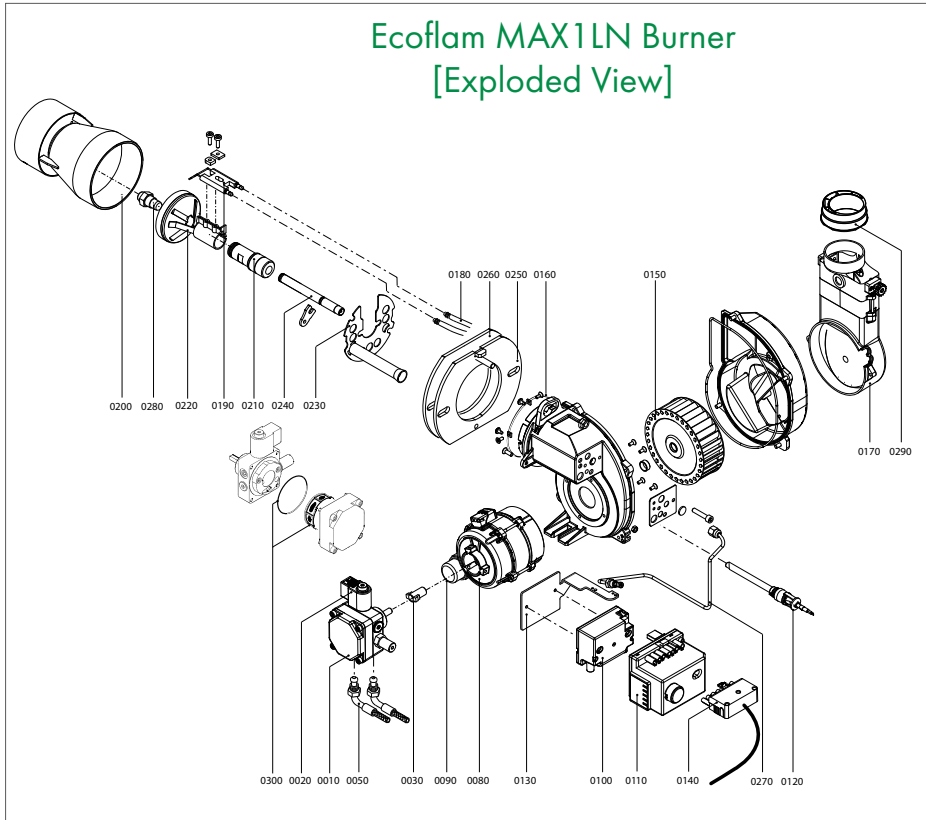
Diagram Index: 29

EBS30

Gasket



Diagram Index: 30



EBS65327402

Hoses (NW 4x700)



Diagram Index: 50

EBS65327403

Control Box with cables



Diagram Index: 110

EBS65327408

Blast Tube (WH12/16)



Diagram Index: 200

EBS65327409

Blast Tube (WH16/21)



Diagram Index: 200

EBS65327404

Photocell



Diagram Index: 120

EBS65327405

Support Bracket



Diagram Index: 130

EBS65327410

Nozzle Holder



Diagram Index: 210

EBS65327411

Diffuser (WH12/16)



Diagram Index: 220

EBS65327406

Plug



Diagram Index: 140

EBS65327407

Cover Air Inlet



Diagram Index: 170

EBS65327412

Diffuser (WH16/21)



Diagram Index: 220

EBS65327413

Conveyor



Diagram Index: 230

EBS65327414
Rod
Diagram Index: 240



EBS65327415
Oil Pipe
Diagram Index: 270



EBS21
HT Lead
Diagram Index: 180



EBS29
Flange
Diagram Index: 250



EBS13011117
4uF Capacitor
Diagram Index: 90



EBS43
Continuous Operation Transformer
Diagram Index: 100



EBS30
Gasket
Diagram Index: 260



EBS36
Snorkel Adaptor
Diagram Index: 290




EBS17
Fan (140x42)
Diagram Index: 150

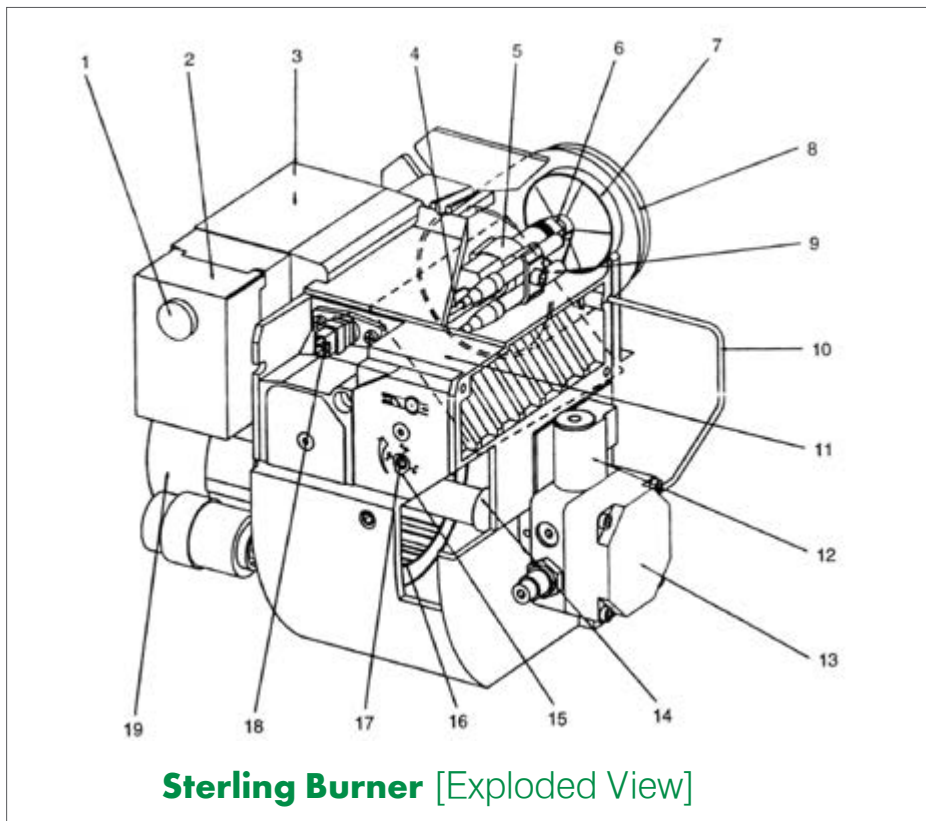


EBS19
Combustion Head O-Ring
Diagram Index: 160



EBS65322033
Lead for transformer
Image coming soon





SBS03
Pump BFP11L3



Diagram Index: 13

SBS50
Pump BFP21L3



Diagram Index: 13

SBS51
Pump BFP21R3



Diagram Index: 13

SBS04
Solenoid Coil 240V



Diagram Index: 12

SBS01
Control Box




Diagram Index: 1

SBS02
Photocell




Diagram Index: 18

SBS05
Motor 125W



Diagram Index: 19

SBS07
1000mm Flexi Oil Line



SBS08

Gasket One Bolt Fixing



SBS09

Flange



SBS13

KA Diffuser Plate



Diagram Index: 7

SBS14

K - Blast Tube 140/160



Diagram Index: 8

SBS17

Burner Flange Gasket



SBS10

Fixing Screw



SBS15

C-K Blast Tube 160/200



Diagram Index: 8

SBS16

Base & Cable Plate



Diagram Index: 2

SBS11

Ignition Transformer



Diagram Index: 3

SBS12

Drive Coupling



Diagram Index: 14

SBS22

Fan Impellar



SBS25

Supply Tube



Diagram Index: 10

SBS26

Electrode Assembly x2



Diagram Index: 9

SBS28

Electrode Leads



Diagram Index: 4

SBS39

Gasket



SBS40

Capacitor



Diagram Index: 21

MPBS 12

Complete Baffle Set



Suitable for:
Multipass 50/70

MPBS12X

Bottom Baffle Set



Suitable for:
Multipass 50/70

MPBS 13

Complete Baffle Set



Suitable for:
Combi 90 MKII
Multipass 70/90

MPBS13X

Bottom Baffle Set



Suitable for:
Combi 90 MKII
Multipass 70/90

MPBS 14

Complete Baffle Set



Suitable for:
Multipass 90/110

MPBS 15

Complete Baffle Set



Suitable for:
Multipass 90/140 & 110/140

MPBS15X

Bottom Baffle Set



Suitable for:
Multipass 90/140 & 110/140

MPBS27

Complete Baffle Set



Suitable for:
Multipass 160/200

MPCBS51

Complete Baffle Set



Suitable for:
Combi 90 V3

MPCBS51X

Bottom Baffle Set



Suitable for:
Combi 90 V3

MPBS28

Complete Baffle Set



Suitable for:
Multipass 140/160

EFBS30

Complete Baffle Set



Suitable for:
Combi 70 MKII
Combi 70 V3
Euroflame 50/70

MPCBS52

Complete Baffle Set



Suitable for:
Combi Max

MPCBS52X

Bottom Baffle Set



Suitable for:
Combi Max

EFBS09

Complete Baffle Set (295mm square top)



Suitable for:
Euroflame 50/90 & 70/90 (post 1994)

EFBS49

Complete Baffle Set



Suitable for:
Euroflame 90/120

VBS93

Complete Baffle Set



Suitable for:
Vortex Pro Combi 21kW
Vortex Pro 15-21kW

VBS93B

Bottom Baffle



Suitable for:
Vortex Pro Combi 21kW
Vortex Pro 15-21kW

VBS01

Complete Baffle Set



Suitable for:
Vortex Pro Combi 26kW
Vortex Pro 15-26kW

VBS11

Bottom Baffle Set



Suitable for:
Vortex Pro Combi 26kW
Vortex Pro 15-26kW

VBS96

Complete Baffle Set



Suitable for:
Vortex Eco 15-26kW
Vortex Boiler House 15-26kW

VBS96A

Base Baffle



Suitable for:
Vortex Eco 15-26kW

VBS36

Complete Baffle Set



Suitable for:
Vortex Pro Combi 36kW
Vortex Pro 26-46kW
Vortex Boiler House 36-46kW

VBS10

Bottom Baffle Set



Suitable for:
Vortex Pro Combi 36kW
Vortex Pro 26-46kW

VBS97

Complete Baffle Set



Suitable for:
Vortex Eco 26-35kW
Vortex Boiler House 26-35kW

WBS03

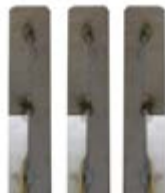
Complete Baffle Set



Suitable for:
Vortex Eco Wallhung 12-21kW

VBS76

Complete Baffle Set



Suitable for:
Vortex Pro 46-58kW
Vortex Boiler House 46-58kW

VBS77

Complete Baffle Set



Suitable for:
Vortex Pro 58-70kW
Vortex Boiler House 58-70kW

WBS03A

Base Baffle



Suitable for:
Vortex Eco Wallhung 12-21kW



VBS137A

Complete Baffle Set



Suitable for:
Vortex Combi 26 XS

VBS05

Turbulator (360mm)



| | |
|----------------------------|---------------------|
| Suitable for: | Qty in each boiler: |
| Vortex Combi 21, Pro 15-21 | 16 |
| Vortex Combi 26, Pro 15-26 | 22 |
| Vortex Combi 36, Pro 26-46 | 33 |
| Vortex Eco 15-26 | 11 |
| Vortex Eco 26-35 | 22 |

EFBS20

Access/ Combustion Door (H160 x W341mm)



Suitable for:
Euroflame 50/90, 70/90 & 90/120
(post Nov 2003)

EFBS20X

Access/ Combustion Door (H150 x W260mm)



Suitable for:
Combi 70 MKII (post Nov 2003)
Combi 70 v3 (post Nov 2003)
Euroflame 50/70 (post Nov 2003)

VBS03

Turbulator (476mm)



| | |
|---------------------------|---------------------|
| Suitable for: | Qty in each boiler: |
| Vortex Pro 46-70 | 52 |
| Vortex Boiler House 46-70 | 52 |

WBS01

Turbulator



| | |
|----------------------------|---------------------|
| Suitable for: | Qty in each boiler: |
| Vortex Eco Wall hung 12-21 | 24 |

MPBS16

Access/ Combustion Door



Suitable for:
Combi 90 MKII
Combi 90 V3
Multipass 50/70, 50/90 & 70/90

MPBS17

Access/ Combustion Door



Suitable for:
Multipass 90/110 & 90/140

EFBS18

Access/ Combustion Door (H162 x W318mm)



Suitable for:
Euroflame 50/90, 70/90 & 90/120 (pre Nov 2003)

EFBS18X

Access/ Combustion Door (H150 x W240mm)



Suitable for:
Combi 70 MKII (pre Nov 2003)
Combi 70 V3 (pre Nov 2003)
Euroflame 50/70 (pre Nov 2003)

MPBS17L

Access/ Combustion Door



Suitable for:
Multipass 140/200

MPCBS111A

Access/ Combustion Door



Suitable for:
Vortex Pro Combi 21kW

MPCBS110A

Access/ Combustion Door



Suitable for:
Vortex Pro Combi 26kW (Dec 2014 - July 2017)

MPCBS110

Access/ Combustion Door



Suitable for:
Vortex Pro Combi 26kW (pre Dec 2014)

VBS69WHT

Access/ Combustion Door



Suitable for:
Vortex Pro 15-26kW
Vortex Eco 26-35kW
Vortex Boiler House 26-35kW

VBS69X

Access/ Combustion Door



Suitable for:
Vortex Pro 26-46kW
Vortex Boiler House 36-46kW

MPCBS110B

Access/ Combustion Door c/w vessel bracket



Suitable for:
Vortex Pro Combi 26kW (post July 2017)

VBS69ZA

Access/ Combustion Door Vessel Bracket



Suitable for:
Vortex Pro Combi 36kW (Dec 2014 - July 2017)

VBS04

Access/ Combustion Door



Suitable for:
Vortex Pro 46-70kW
Vortex Boiler House 46-70kW

WBS04

Access/ Combustion Door



Suitable for:
Vortex Eco Wallhung 12-21kW

VBS69Z

Access/ Combustion Door



Suitable for:
Vortex Pro Combi 36kW

VBS92

Access/ Combustion Door



Suitable for:
Vortex Eco 15-26kW
Vortex Boiler House 15-26kW

TPBS23L

Access/ Combustion Door Rope Gasket



Suitable for:
Combi 90 MKII
Combi 90 V3
Multipass 50/90 & 90/140

TPBS24

Access/ Combustion Door Rope Gasket



Suitable for:
Multipass 140/200

VBS15

Access/ Combustion Door Rope Gasket



Suitable for:
Vortex Pro Combi 26kW
Vortex Pro 15-26kW
Vortex Eco 15-26kW

VBS15X

Access/ Combustion Door Rope Gasket



Suitable for:
Vortex Pro Combi XS
Vortex Pro 15-21kW
Vortex Eco 15-21kW

VBS16

Access/ Combustion Door Rope Gasket



Suitable for:
Vortex Pro Combi 36kW
Vortex Pro 26-46kW
Vortex Eco 26-35kW

VBS111

Access/ Combustion Door Rope Gasket



Suitable for:
Vortex Pro 46-70kW

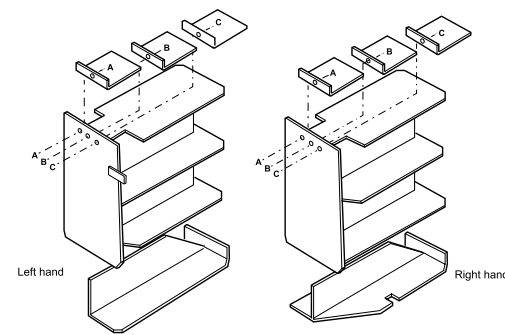
WBS05

Access/ Combustion Door Rope Gasket

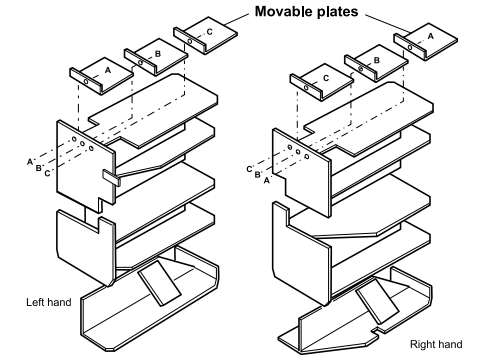


Suitable for:
Vortex Eco Wallhung 12-21kW

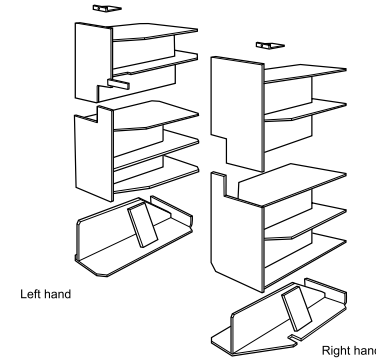
Multi Pass 50/70 Baffle System



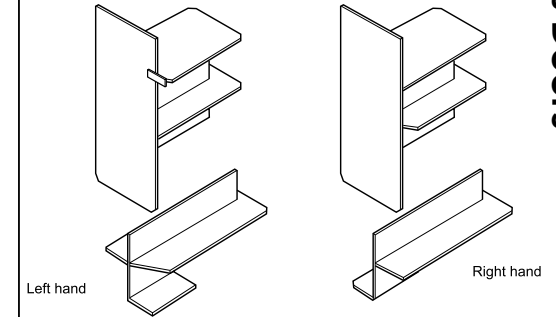
Multi Pass 70/90 Baffle System



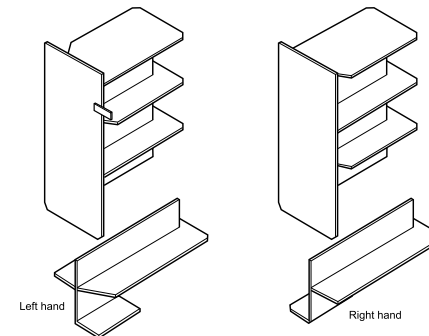
Multi Pass 90/140 & 110/140 Baffle System



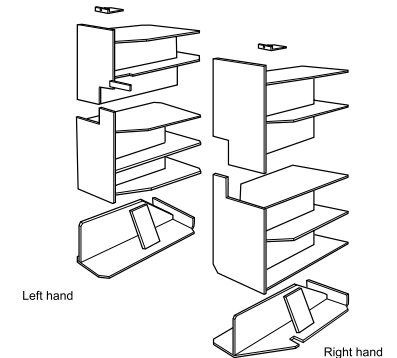
Multi Pass 140/160 Baffle System



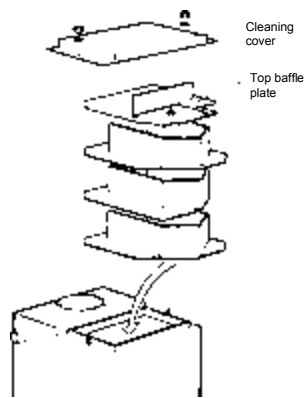
Multi Pass 160/200 Baffle System



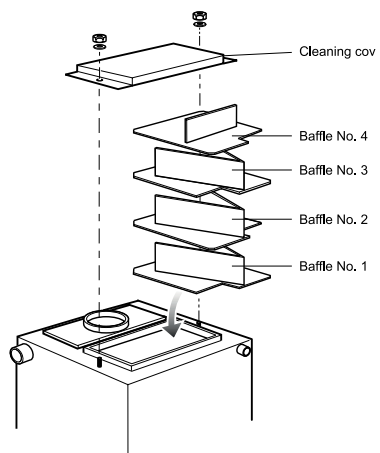
Multi Pass 90/110 Baffle System



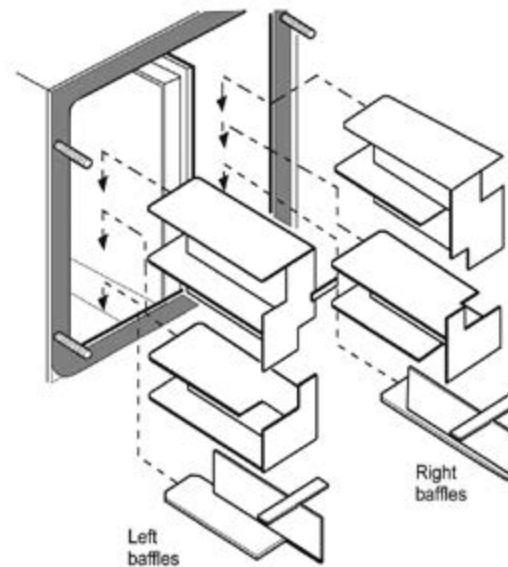
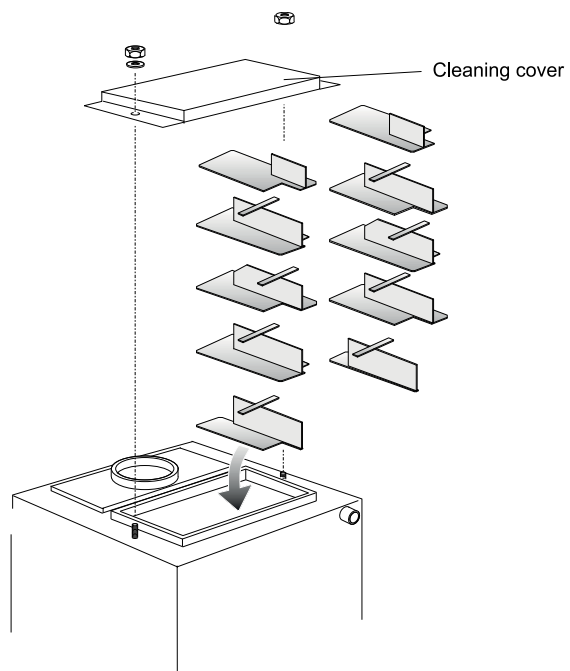
Euroflame 50/90 & 70/90 Baffle System



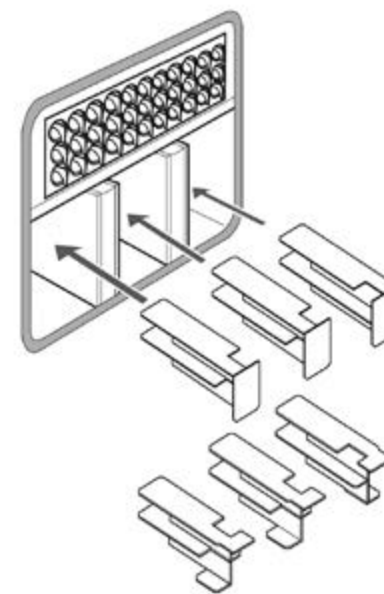
Euroflame 50/70 & Combi 70 Baffle System



Euroflame 90/120 Baffle System



VTXCOMBI26 Baffle System



VTXCOMBI36 Baffle System

VBS159

Wilo Para SC Pump (7m) (cable not included)



Suitable for:
All Vortex models

VBS126A

White HE HW Pump Cable with plug (1100mm)



Suitable for:
All Vortex models

VBS126B

Black HE Heat Only Pump Cable with plug (800mm)



Suitable for:
All Vortex models

VBS126CH

Wilo 7m pump c/w black heat only cable + plug (800mm)



Suitable for:
All Vortex models

VBS126DHW

Wilo 7m pump c/w white hot water cable + plug (1100mm)



Suitable for:
All Vortex models

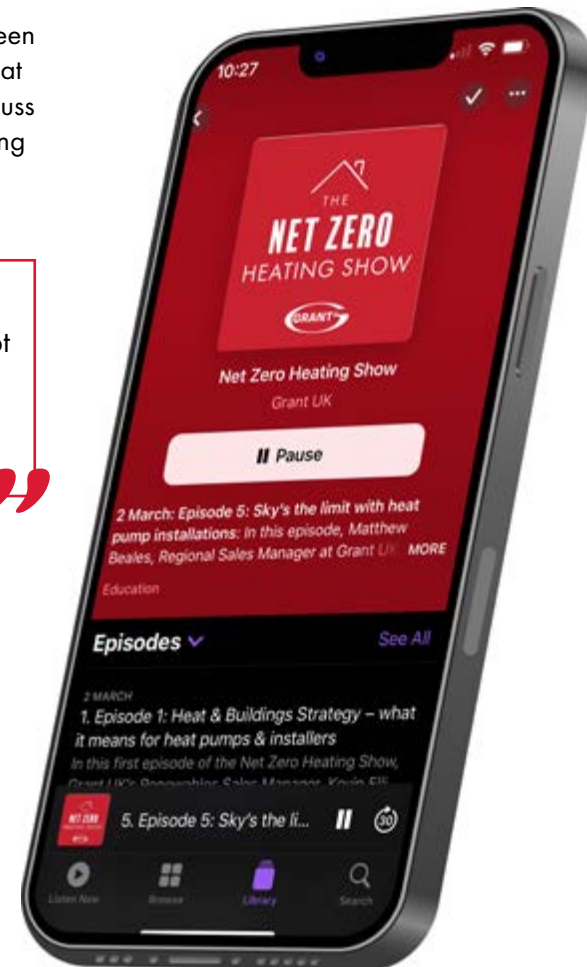

 THE
NET ZERO
 HEATING SHOW

Listen to our podcast where we explore all things renewables and sustainable in domestic home heating.



Members of the Grant Team have been joined by expert guests from the heat pump and renewables sector to discuss the topics that really matter to heating installers and engineers.

“ There's no one job the same, no family the same - you've got to take each job on its individual merits. **JAMIE VICKERS** ”



MPCBS104
Control Panel (including top cover plate)



Suitable for:
Vortex Pro Combi Internal 21-26kW (pre 24.10.14)

MPCBS104X
Control Panel (including top cover plate)



Suitable for:
Vortex Pro Combi Internal 36kW (pre 24.10.14)

MPCBS106
Control Panel



Suitable for:
Vortex Eco External wall hung non-system

MPCBS106X
Control Panel



Suitable for:
Vortex Eco External wall hung system

MPCBS105
Control Panel (including top cover plate)



Suitable for:
Vortex Pro Combi External (all models pre 01.11.16)

MPCBS105N
Control Panel (including top cover plate)



Suitable for:
Vortex Pro Combi External (all models post 01.11.16)

MPCBS108
Control Panel



Suitable for:
Vortex Eco Internal wall hung non-system

MPCBS108X
Control Panel



Suitable for:
Vortex Eco Internal wall hung system

MPCBS114
Control Panel (including top cover plate)



Suitable for:
Vortex Pro Combi Internal
(all models from 24.10.14 - 01.11.16)

MPCBS114N
Control Panel (including top cover plate)



Suitable for:
Vortex Pro Combi Internal (all models post 01.11.16)

MPCBS105A
Control Panel Male 5 Pin Plug



Suitable for:
Vortex Pro Combi External

MPCBS105B
Control Panel Female 5 Pin Plug



Suitable for:
Vortex Pro Combi External

MPCBS54E
Temperature Control PCB (with sensor)



Suitable for:
Vortex Pro Combi (post Sept 2008)
Vortex Blue (All models)

MPCBS54X
Temperature Control PCB (with sensor)



Suitable for:
Combi V3
Vortex Pro Combi (pre Sept 2008)

TPBS30
Temperature Control Knob



Suitable for:
All Models (pre Sept 2015)

VBS135
Temperature Control Knob 180deg




Suitable for:
All Non Combi Models (post Sept 2015)

MPCBS96
Temperature Control PCB (no sensor)



Suitable for:
Vortex Pro Combi (post Sept 2008)

MPCBS97X
Temperature Control PCB (no sensor)



Suitable for:
Combi V3
Vortex Pro Combi (pre Sept 2008)

VBS136
Temperature Control Knob 270deg



Suitable for:
All Combi Models (post Sept 2015)

MPCBS72
Relay (clear/grey)



Suitable for:
Vortex Pro Combi (pre Sept 2008)

MPCBS98
Direct H/W Sensor for PCB (White)



Suitable for:
Vortex Pro Combi (post Sept 2008)

MPCBS97
Central Heating Sensor for PCB (Black)



Suitable for:
Combi V3
Vortex Pro Combi (post Sept 2008)

MPCBS72B
Relay Base (grey relay)



Suitable for:
Vortex Pro Combi (pre Sept 2008)

MPCBS75
Relay Base (orange relay)



Suitable for:
Vortex Pro Combi External (pre Sept 2008)

MPCBS72X
Relay (orange)




Suitable for:
Vortex Pro Combi External (pre Sept 2008)

MPCBS45
Boiler On Neon (green)



Suitable for:
Combi MKII
Vortex Pro Internal

EFBS19
On/Off Double Pole Switch (neon, 4 terminal)



Suitable for:
Vortex Pro Combi MKII
Vortex Pro Combi Combi V3
Vortex Eco Euroflame
Vortex Eco Wallhung Multipass

EFBS21
Boiler On/Off Switch/ Test switch



Suitable for:
(on/off switch) (test switch)
Combi MKII Vortex Pro External
Combi V3 Vortex Eco External
Euroflame
Multipass

MPCBS46
Overheat Cut-Out Thermostat Neon (red)



Suitable for:
Vortex Pro Internal Combi MKII
Vortex Pro Combi Combi V3
Vortex Eco Wallhung

EFBS25
Low Pressure Neon (amber)



Suitable for:
Euroflame
Combi V3

EFBS22
Heating/ Rocker Switch (W24 x H32 mm)



Suitable for:
Combi MKII
Combi V3
Euroflame

EFBS22X
Heating/ Rocker Switch (W15 x H31 mm)



Suitable for:
Combi MKII
Euroflame

EFBS80
Test Switch (4 terminal)



Suitable for:
Combi V3

MPCBS67
Heating/ Store Switch



Suitable for:
Vortex Pro Combi (post Sept 2008)

MPCBS84

Heating Store Twin Switch



Suitable for:
Vortex Pro Combi Internal (pre Sept 2008)

MPCBS99

Timed Test Switch



Suitable for:
Vortex Pro Combi

MPCBS71 NT

Flow Switch



Suitable for:
Vortex Pro Combi 36kW (pre 15.05.08)

MPCBS71 X

Flow Switch



Suitable for:
Vortex Pro Combi 21-26kW
Vortex Pro Combi 36kW (post 15.05.08)

MPCBS41

Microswitch Assembly



Suitable for:
Combi MKII
Combi V3

MPCBS49X/A

Single Pole Low Pressure Switch



Suitable for:
Combi V3
Vortex Pro Combi

MPCBS62/A

Low Pressure Switch Upgrade Kit



Suitable for:
Vortex Pro Internal
Vortex Eco Internal
Vortex Eco Wallhung Internal

MPCBS63/A

Low Pressure Switch Upgrade Kit



Suitable for:
Vortex Pro External
Vortex Eco External
Vortex Eco Wallhung External

WBS07
8 Litre Expansion Vessel



Suitable for:
Vortex Eco Wallhung System

MPCBS27
10 Litre Expansion Vessel



Suitable for:
Euroflame Internal 50/70 & 70/90
Euroflame External
Vortex Pro System 15-21kW
Vortex Pro System 15-26kW (pre 12/08/08)

VBS38
16 Litre Expansion Vessel



Suitable for:
Vortex Pro System 36-46kW

VBS124
24 Litre Expansion Vessel



Suitable for:
Multipass 140/160, 160/200
Vortex Pro Combi (post Dec 2014)

MPSS08
10 Litre Expansion Vessel (flat)



Suitable for:
Vortex Pro Combi 21kW (pre Dec 2014)

MPSS01
12 Litre Expansion Vessel



Suitable for:
Euroflame Internal 50/90 & 90/120
Multipass 50/70, 70/90 & 90/140
Vortex Pro Combi 26kW (pre Dec 2014)
Combi MKII, Combi V3
Vortex Pro 15-26kW System (post 12/08/08)
Vortex Eco

WBSWINK8
8 Litre Expansion Vessel



Suitable for:
Vortex Eco Wallhung System

VBSWINK10
10 Litre Expansion Vessel



Suitable for:
Vortex Pro External system kit 15-21kW

VBS06
12 Litre Expansion Vessel (flat)



Suitable for:
Vortex Pro System 26-36kW

MPCBS70
14 Litre Expansion Vessel



Suitable for:
Vortex Pro Combi 36kW (pre Dec 2014)

VBSWINK12H
12 Litre Expansion Vessel (c/w bracket)



Suitable for:
Vortex Pro 15-26kW
Vortex Eco External sealed system kit 15-35kW
Vortex Eco system 15-35

VBSWINK12E
12 Litre Expansion Vessel (390mm dia)



Suitable for:
Vortex Pro System 26-36kW

VBSWINK16

16 Litre Expansion Vessel



Suitable for:
Vortex Pro System 36-46kW
Vortex Pro External system kit 26-46kW

MPCBSWINK24

24 Litre Expansion Vessel



Suitable for:
Vortex Pro Combi (post Dec 2014)

VBS/VWB12

12 litre Expansion Vessel with wall bracket & fittings



For extra system expansion

VBS/UNI

12 Litre Slimline Universal Expansion Vessel
(no bracket)



VBS/VWB

Expansion vessel fixing bar kit



For extra system expansion

VBS/VWB25

25 litre Expansion Vessel with wall bracket & fittings



For extra system expansion

VBS/VWB18

18 litre Expansion Vessel with wall bracket & fittings



For extra system expansion

Expansion Vessel Fixing Bar Kit

The perfect hanging solution for expansion vessels up to 25 litres.

The Grant expansion vessel fixing bar kit comes complete with expansion vessel service valve, manual air vent, 3 bar PRV and wall fixing back plate.

- Includes expansion vessel service valve
- Unique assembly
- Ideal when space is limited
- Robust construction
- Easy to install
- Suitable for vessels from 2 to 25 litres (depending on wall and wall fixings)
- For central heating systems only
- Available in packs complete with expansion vessel



MPCBS24

Water Pressure Gauge



Suitable for:
Combi MKII Internal
Combi V3
Euroflame System
Multipass Internal

MPSS02

Water Pressure Gauge



Suitable for:
Combi MKII External
Multipass External
Vortex Pro External
Vortex Eco Sealed System Kit

MPCBS30

Filling Loop Kit with valves



Suitable for:
Combi MKII
Combi V3
Vortex Pro Combi

Euroflame
Multipass
Vortex Wall hung

VBS35

Filling Loop Kit with valves



Suitable for:
Vortex Pro

VBS08

Water Pressure Gauge



Suitable for:
Vortex Pro Internal
Vortex Pro Combi
Vortex Eco Wallhung

VBS13

Pressure Gauge & Valve



Suitable for:
Vortex Eco Sealed System Kit

VBS35X

Filling Loop Kit with valves



Suitable for:
Vortex Eco Sealed System Kit

MPCBS31

Expansion Vessel Flexi Hose



Suitable for:
Combi MKII
Multipass Sealed System Kit
Euroflame Sealed System Kit

VBS09

Temperature & Pressure Gauge



Suitable for:
All Vortex models

MPSS07

Pressure Gauge (with T-Piece)



Suitable for:
MPSSKIT90/ 140/ 200

MPSS04

Expansion Vessel Flexi Hose



Suitable for:
Multipass

MPCBS79

Expansion Vessel Flexi Hose



Suitable for:
Vortex Pro Combi 26-36kW (pre Dec 2014)
Vortex Pro (all models excluding 15-21 kW)
Vortex Eco
Combi V3

VBS125

Expansion Vessel Flexi Hose



Suitable for:
Vortex Pro Combi (post Dec 2014)

VBS95

Expansion Vessel Flexi Hose



Suitable for:
Vortex Pro External 15-21kW
Vortex Pro Combi 21kW (pre Dec 2014)

VBS110

Flexi Condensate Hose



Suitable for:
Vortex Pro Internal 15-21kW

VBS127

Flexi Condensate Hose



Suitable for:
Vortex Pro Combi Internal (post Dec 2104)

WBS08

Expansion Vessel Flexi Hose



Suitable for:
Vortex Eco Wallhung

VBS107

Flexi Condensate Hose



Suitable for:
Vortex Pro Internal 15/26, 26/36 & 36/46
Vortex Pro Combi Internal (pre Dec 2014)
Vortex Eco Internal

VBS108

Flexi Condensate Hose



Suitable for:
Vortex Pro Internal 46-70kW

VBS109

Flexi Condensate Hose



Suitable for:
Vortex Pro External
Vortex Pro Combi External
Vortex Eco External
Vortex Boiler House

DSBH



Suitable for:
Euroflame Boilerhouse
Multipass Boilerhouse

DSBH03LC

Dual Thermostat



Suitable for:
All Vortex boilerhouse models (Pre Sept 15)

TPBS34

Boiler (Heating) Thermostat



Suitable for:
All standard efficiency boilers (non-condensing)

VBS145

Dual Stat (450mm capillary)



Suitable for:
All Vortex boilerhouse models (Post Sept 15)

EFBS10

Thermostat Pocket



Suitable for:
Combi MKII
Multipass
Vortex Eco Wallhung
Combi V3
Vortex Pro
Vortex Pro Combi

EFBS23

Frost Stat



Suitable for:
All External models

VBS146

Control Thermostat 50-75°C



Suitable for:
All Vortex models

VBS147

High Limit Thermostat 110°C *(manual reset SBSC)



Suitable for:
All Vortex models

MPCBS25

Primary Store Thermostat



Suitable for:
Combi MKII

TPBS33

High Limit Thermostat



Suitable for:
All standard efficiency boilers (non-condensing)

VBS02

Condensate Trap



Suitable for:
All Vortex models

MPCBS100

Isolation Valve (28mm)



Suitable for:
Vortex Pro Combi 36kW

MPCBS69

Pump Valve Pair (22mm)



Suitable for:
Euroflame
Multipass
Vortex Pro
Vortex Pro Combi 21-26kW

MPCBS77

Pump Isolation Valve (22mm)



Suitable for:
Combi V3
Vortex Pro Combi 21-26kW

MPCBS101

Isolation Valve (22mm)



Suitable for:
Combi V3
Vortex Pro Combi 21-26kW

MPCBS109

Isolation Valve



Suitable for:
Combi MKII

MPCBS64

Pump Valve Pair (28mm)



Suitable for:
Euroflame
Multipass
Vortex Pro
Vortex Pro Combi 36kW

MPCBS78

Pump Isolation Valve (28mm)



Suitable for:
Vortex Pro Combi 36kW

MPCBS76A

Filling Loop Heating Isolation Valve (short)



Suitable for:
Combi MKII
Combi V3
Vortex Pro Combi

MPCBS76

Filling Loop Heating Isolation Valve (long)

(Cold water inlet)



Suitable for:
Combi MKII
Combi V3
Vortex Pro Combi

MPCBS20/A

Diverter Valve



Suitable for:
Combi MKII
Combi V3

MPCBS29

Automatic Air Vent



Suitable for:
All models

MPCBS26

Non-Return Check Valve (22mm)



Suitable for:
Combi MKII
Combi V3
Vortex Pro Combi 21-26kW (pre April 2011)

MPCBS81

Non-Return Check Valve (28mm)



Suitable for:
Vortex Pro Combi 36kW (pre April 2011)

MPCBS123

3 bar Pressure Relief Valve (2 port)



Suitable for:
Combi V3 External
Vortex Pro External
Vortex Eco

MPCBS124

3 bar Pressure Relief Valve (with pressure gauge port)



Suitable for:
Combi V3 Internal
Vortex Pro Combi (internal & external)
Vortex Pro Internal
Vortex Eco Wallhung

MPCBS81B

Non-Return Check Valve (28mm)



Suitable for:
Vortex Pro Combi (post April 2011)

MPCBS22F

51°C Thermostatic Mixing Valve & Filter



Suitable for:
Combi MKII
Combi V3
Vortex Pro Combi

VBS62M

Manual Air Vent Kit (28mm)



Suitable for:
Vortex Pro 26-46kW

MPBS21

Drain Cock 1/2 " BSP



Suitable for:
Vortex Pro

MPCBS28

2.5 bar Pressure Relief Valve



Suitable for:
Combi MKII Internal
Euroflame Internal
Multipass System

MPCBS47

2.5 bar Pressure Relief Valve



Suitable for:
Combi MKII External
Euroflame External

MPCBS68

Manual Air Vent 3/8"



Suitable for:
Vortex Pro Combi

VBS61M

Manual Air Vent Kit (22mm)



Suitable for:
Vortex Pro 15-26kW
Vortex Eco

FKS60

EZ Flue Guard (stainless steel)



Suitable for:
EZ90/200 low level flues

FKS60B

EZ Flue Guard (black)



Suitable for:
EZ90/200 low level flues

FKS70

Flue Guard



Suitable for:
Vortex external models

FKS3402541

EZ Flue Guard



Suitable for:
HLK01/02 high level flues

MPCBS21 /A

15 Plate Heat Exchanger



Suitable for:
Combi MKII

MPCBS53/A

35 Plate Heat Exchanger



Suitable for:
Combi V3
Vortex Pro Combi

MPCBS33/A

Diaphragm Kit



Suitable for:
Combi MKII
Combi V3

MPCBS39

Flow Restrictor



Suitable for:
All Combi models

MPCBS122/A

Metal Top Hat Washer Set



Suitable for:
All models

MPCBS35

Microswitch Circlip (for diverter valve)



Suitable for:
Combi MKII
Combi V3

FKS92

Black Neoprene Gasket Flue Spigot



Suitable for:
 Vortex Pro 15-26kW
 Vortex Eco 15-26kW
 Vortex Eco Wallhung 12-21kW

FKS94

Black Neoprene Gasket Flue Spigot



Suitable for:
 Vortex Pro 26-70kW
 Vortex Eco External 26-35kW

FKS55

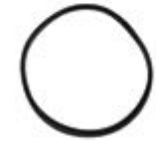
Black Flue Seal



Suitable for:
 High level/ vertical balanced flue up to 26kW

FKS56

Black Flue Seal



Suitable for:
 High level/ vertical balanced flue 26-70kW

FKS94A

Black Neoprene Gasket Flue Spigot



Suitable for:
 Vortex Eco Internal 26-35kW

EFBS14

Nut & Washer Set (for cleaning door)



Suitable for:
 Combi MKII
 Combi V3
 Euroflame
 Multipass
 Vortex Pro Combi, Vortex Boiler House

FKS61

Red Flue Seal



Suitable for:
 Low level balanced flue up to 26kW

FKS62

Black Flue Seal



Suitable for:
 Low level balanced flue up to 26kW

FKS53

Red Flue Seal



Suitable for:
 High level/ vertical balanced flue up to 26kW

FKS54

Red Flue Seal



Suitable for:
 High level/ vertical balanced flue 26-70kW

FKS63

Red Flue Seal



Suitable for:
 Low level balanced flue 26-70kW

FKS64

Black Flue Seal



Suitable for:
 Low level balanced flue 26-70kW

MPBS23

Magnetic Door Catch



Suitable for:
Vortex Wallhung

EFBS29X

Chrome Handle Assembly



Suitable for:
Euroflame External
Multipass External

FKS10

Base Pad



Suitable for:
Multipass, Euroflame

FKS10A

Base Pad



Suitable for:
All Vortex models

FKS24

Aluminium Flue Sealing Tape



Suitable for:
All models

FKS35

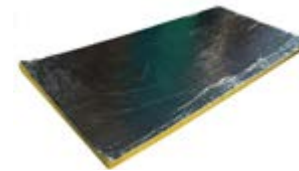
Snorkel Tube



Suitable for:
All Internal models

FKS89

Boiler Insulation Sheet (120cm x 60cm)



Suitable for:
All models

VBS17

High Temperature Silicone Sealant (black)



Suitable for:
All models

MPCBS35X

6.3A Fuses (for PCB) (5 pack)



Suitable for:
Combi V3
Vortex Pro Combi

VBS18

Cleaning Brush



Suitable for:
All Vortex models

TIGERLOOP2

Tigerloop Bio



Suitable for:
All all internal & external models

GOIL01
Oil Drip Tray c/w 5 ultra absorbent pads



GOIL02
Pack of 20 ultra absorbent pads (for oil trays)



PACK OF 20

GOIL07
3/8" Bio Approved Oil Filter c/w 10mm x 3/8" MI Fittings



GUNI002
10mm x 1/4" M I Straight fitting



GOIL03
1/4" Bio Approved Oil Filter c/w 10mm x 1/4" MI Fitting



GOIL04
1/4" Bio Approved Oil Filter 489 (only)



GUNI003
10mm x 3/8" M I Straight fitting



GOIL05
3/8" Bio Approved Oil Filter 489 (Only)



GOIL06
Bio Filter Element & Seals (for 489 Filters)



| Part No | Description |
|-----------|-----------------------|
| DEL5060W | DELAVAN 0.50 GPH 60°W |
| DEL5080W | DELAVAN 0.50 GPH 80°W |
| DEL5560W | DELAVAN 0.55 GPH 60°W |
| DEL5580W | DELAVAN 0.55 GPH 80°W |
| DEL6060W | DELAVAN 0.60 GPH 60°W |
| DEL6080W | DELAVAN 0.60 GPH 80°W |
| DEL6560W | DELAVAN 0.65 GPH 60°W |
| DEL6580W | DELAVAN 0.65 GPH 80°W |
| DEL7560W | DELAVAN 0.75 GPH 60°W |
| DEL8570W | DELAVAN 0.85 GPH 70°W |
| DEL10080W | DELAVAN 1.00 GPH 80°W |
| DEL11060W | DELAVAN 1.10 GPH 60°W |
| DEL11080W | DELAVAN 1.10 GPH 80°W |
| DEL12560W | DELAVAN 1.25 GPH 60°W |
| DEL13545W | DELAVAN 1.35 GPH 45°W |
| DEL13560W | DELAVAN 1.35 GPH 60°W |
| DEL15060W | DELAVAN 1.50 GPH 60°W |
| DEL17560W | DELAVAN 1.75 GPH 60°W |
| DEL20060W | DELAVAN 2.00 GPH 60°W |
| DEL22560W | DELAVAN 2.25 GPH 60°W |
| DEL25060W | DELAVAN 2.50 GPH 60°W |
| DEL45060W | DELAVAN 4.50 GPH 60°W |
| DEL8580W | DELAVAN 0.85 GPH 80°W |
| DEL7580W | DELAVAN 0.75 GPH 80°W |
| DEL10060W | DELAVAN 1.00 GPH 60°W |
| GN3580H | DANFOSS 0.35GAL/80H |
| GN3580S | DANFOSS 0.35GAL/80S |
| GN4060ES | DANFOSS 0.40GAL/60ES |
| GN4060S | DANFOSS 0.40GAL/60S |
| GN4080EH | DANFOSS 0.40GAL/80EH |
| GN4080ES | DANFOSS 0.40GAL/80ES |
| GN4080S | DANFOSS 0.40GAL/80S |
| GN4560ES | DANFOSS 0.45GAL/60ES |
| GN4580EH | DANFOSS 0.45GAL/80EH |
| GN4580ES | DANFOSS 0.45GAL/80ES |
| GN5060EH | DANFOSS 0.50GAL/60EH |
| GN8580ES | DANFOSS 0.85GAL/80ES |

| Part No | Description |
|----------|-----------------------|
| GN5060ES | DANFOSS 0.50GAL/60ES |
| GN5060S | DANFOSS 0.50GAL/60S |
| GN5080EH | DANFOSS 0.50GAL/80EH |
| GN5080ES | DANFOSS 0.50GAL/80ES |
| GN5080H | DANFOSS 0.50GAL/80H |
| GN5560EH | DANFOSS 0.55GAL/60EH |
| GN5560ES | DANFOSS 0.55GAL/60ES |
| GN5560H | DANFOSS 0.55GAL/60H |
| GN5560S | DANFOSS 0.55GAL/60S |
| GN5580EH | DANFOSS 0.55GAL/80EH |
| GN5580ES | DANFOSS 0.55GAL/80ES |
| GN5580H | DANFOSS 0.55GAL/80H |
| GN6060EH | DANFOSS 0.60GAL/60 EH |
| GN6060ES | DANFOSS 0.60GAL/60ES |
| GN6060S | DANFOSS 0.60GAL/60S |
| GN6080EH | DANFOSS 0.60GAL/80EH |
| GN6080ES | DANFOSS 0.60GAL/80ES |
| GN6080H | DANFOSS 0.60GAL/80H |
| GN6080S | DANFOSS 0.60GAL/80S |
| GN6560EH | DANFOSS 0.65GAL/60EH |
| GN6560ES | DANFOSS 0.65GAL/60ES |
| GN6560S | DANFOSS 0.65GAL/60S |
| GN6580EH | DANFOSS 0.65GAL/80EH |
| GN6580ES | DANFOSS 0.65GAL/80ES |
| GN6580S | DANFOSS 0.65GAL/80S |
| GN7580S | DANFOSS 0.75 GAL/80S |
| GN7560EH | DANFOSS 0.75GAL/60EH |
| GN7560ES | DANFOSS 0.75GAL/60ES |
| GN7560S | DANFOSS 0.75GAL/60S |
| GN7580EH | DANFOSS 0.75GAL/80EH |
| GN7580ES | DANFOSS 0.75GAL/80ES |
| GN7580H | DANFOSS 0.75GAL/80H |
| GN8560EH | DANFOSS 0.85GAL/60EH |
| GN8560ES | DANFOSS 0.85GAL/60ES |
| GN8560S | DANFOSS 0.85GAL/60S |
| GN8580EH | DANFOSS 0.85GAL/80EH |
| GN12560S | DANFOSS 1.25GAL/60S |

| Part No | Description |
|-----------|-----------------------|
| GN8580H | DANFOSS 0.85GAL/80H |
| GN8580S | DANFOSS 0.85GAL/80S |
| GN10080ES | DANFOSS 1.00 GAL/80ES |
| GN10060EH | DANFOSS 1.00GAL/60EH |
| GN10060ES | DANFOSS 1.00GAL/60ES |
| GN10060S | DANFOSS 1.00GAL/60S |
| GN10080EH | DANFOSS 1.00GAL/80EH |
| GN10080H | DANFOSS 1.00GAL/80H |
| GN11080H | DANFOSS 1.10 GAL/80H |
| GN11080S | DANFOSS 1.10 GAL/80S |
| GN11045S | DANFOSS 1.10GAL/45S |
| GN11060EH | DANFOSS 1.10GAL/60EH |
| GN11060ES | DANFOSS 1.10GAL/60ES |
| GN11060S | DANFOSS 1.10GAL/60S |
| GN11080EH | DANFOSS 1.10GAL/80EH |
| GN12060S | DANFOSS 1.20GAL/60S |
| GN12080H | DANFOSS 1.20GAL/80H |
| GN12080S | DANFOSS 1.20GAL/80S |
| GN12560H | DANFOSS 1.25GAL/60H |

HVO NOZZLES

| | | | |
|------------|------------------------|------------|------------------------|
| GN4060SHVO | DANFOSS 0.40 60° S HVO | GN7560SHVO | DANFOSS 0.75 60° S HVO |
| GN5560SHVO | DANFOSS 0.55 60° S HVO | | |

NEW

| Part No | Description |
|----------|------------------|
| GNOZZKIT | Grant Nozzle Kit |

| Kit Contents | QTY |
|--|-----|
| 0.65/80EH nozzle | 10 |
| 0.85/80EH nozzle | 4 |
| 0.75/80EH nozzle | 6 |
| 0.60/80EH nozzle | 3 |
| 1.00/80EH nozzle | 2 |
| 0.55/80EH nozzle | 3 |
| 0.60/60ES nozzle | 5 |
| 0.85/60ES nozzle | 2 |
| Box spanner 5/8" x 3/4" x 125mm with T-Bar | 1 |



| Part No | Description |
|---------|--|
| GFV6515 | 65°C 1.5 metre fire valve c/w fittings |
| GFV6530 | 65°C 3 metre fire valve c/w fittings |
| GFV6560 | 65°C 6 metre fire valve c/w fittings |
| GFV6590 | 65°C 9 metre fire valve c/w fittings |
| GFV9020 | 90°C 2 metre fire valve c/w fittings |
| GFV9030 | 90°C 3 metre fire valve c/w fittings |
| GFV9060 | 90°C 6 metre fire valve c/w fittings |
| GFV9090 | 90°C 9 metre fire valve c/w fittings |

Important Note

65°C fire valves can be used on Vortex Boiler House models. For all other internal and external models please use 90°C valves.

Grant Fire Valves

- Fast acting non-electric safety valve
- Manual reset
- Manual on/off for appliance servicing
- Sensor system fails safe if broken
- Two alternative temperature settings
- Remote sensing up to 12m
- Conforms to BS 5410 Part 1
- Approved to OFTEC OFS E101:2015
- Biofuel compatible



GS200030

HE Pump + 1 inch lead



Suitable for:
GS222154E, 154G, 413HE pump stations

GS200032

HE Pump 1 1/2"



Suitable for:
GS222154H pump station

GSE01A

Flow Valve Assembly (Red)



Suitable for:
Post 2012 pump stations

GSE02

Flow Valve Assembly (Blue)



Suitable for:
GS25514E & GS222413HE
East/West pump station

GSE03

Safety Valve Assembly



Suitable for:
Post 2012 pump stations

GSE04

Pressure Gauge



Suitable for:
Post 2012 pump stations

GS200033
Pump lead



Suitable for:
GS200032 HE pump (GS222154H pump station)

GS222017
Collector Clamp (bronze)



GS222766
Temperature Sensor



Suitable for:
SDX1 Controller

GS222021
Temperature Sensor



Suitable for:
GSD3 Controller

GSE07A
Air Bottle Assembly



Suitable for:
Post 2012 pump stations

GSE08A
Fill/ Flush and Flow Regulator Assembly



Suitable for:
GS222154E, 154G pump stations

GS222094/S
Nutstein and Bolt



GSE08B
Fill/ Flush and Flow Regulator Assembly



Suitable for:
GS222154H pump station

GS222019
1/2" Solar Releif Valve for Pump Station



GCS23
12 Litre Expansion Vessel (3/4" BSP)

Suitable for:
125 - 150lt models

GCS01A
18 Litre Expansion Vessel (3/4" BSP)

Suitable for:
Cylinders post Nov 2012

GCS18
3 Port Motorised Valve (22mm)

Suitable for:
All models

GCS20X
2 Port Motorised Valve (22mm)

Image coming soon

Suitable for:
All models

GCS04A
25 Litre Expansion Vessel (3/4" BSP)

Suitable for:
Cylinders post Nov 2012

GCS05A
33 Litre Expansion Vessel (3/4" BSP)

Suitable for:
Cylinders post Nov 2012

GCS33
Expansion Vessel Hose Adaptor (1" F to 3/4" M)

Suitable for:
400 Litre Cylinders

GCS07
Pressure Reducing Inlet Manifold (22mm)
c/w 3 bar PRV and 6 bar expansion relief valve

Suitable for:
Cylinders post Nov 2010

GCS27A
50 Litre Expansion Vessel (1" BSP)

Suitable for:
Cylinders post Nov 2012

GCS02
Expansion Vessel Hose (3/4" BSPF x 3/4" BSPM)

Suitable for:
All models

GCS07G
Pressure Reducing Inlet Manifold (22mm)
c/w 3 bar PRV and 6 bar expansion relief valve

Suitable for:
Cylinders pre Nov 2010

GCS08
6 Bar Pressure Relief Valve (push fit)


Suitable for:
Cylinders Pre Nov 2010

GCS34
6 Bar Pressure Relief Valve (compression fitting)



Suitable for:
Cylinders Post Nov 2010

GCS17
T&P Valve (3/4" M x 22mm compression)
90°C / 7 bar, probe length 99mm



Suitable for:
400 - 500lt models

GCS13
Immersion Heater (element) & Stat



Suitable for:
All models

GCS31
Immersion Stat (only)



Suitable for:
All models

GCS09
T&P Valve (1/2" M x 15mm compression)
90°C / 7 bar, probe length 97mm




Suitable for:
Models up to 300lt

GCS10
Tundish (15mm x 22mm) c/w plastic nuts



Suitable for:
All models post Nov 2010
Models up to 300lt pre Nov 2010

GCS14
Elbow / Drain Cock



Suitable for:
All models

GCS22
Tundish (22mm x 1" F) c/w nut & olive



Suitable for:
400lt models pre Nov 2012

GCS11
Control/ Limit Stat (25°C/ 65°C adj, 80°C Limit)



Suitable for:
All models

HPAS01A
BTC Controller



Suitable for:
All HPAW & ASHE models

HPAS02L
BTC Sensor (blue)



Suitable for:
All HPAW & ASHE models

HPAS43
Temperature Sensor



Suitable for:
All HPAW & ASHE models

HPAS94
Ambient Air Sensor



Suitable for:
All HPAW & ASHE models

HPAS02A
Black Wiring Harness for BTC



Suitable for:
All HPAW & ASHE models

HPAS21X
ATC Controller



Suitable for:
All HPAW models

HPAS96
Discharge Gas Sensor



Suitable for:
All HPAW models

HPAS97
Black Temperature Sensor




Suitable for:
All HPAW models

HPAS44
Controller Cable 5m



Suitable for:
All HPAW models

HPAS109
ATC Controller



Suitable for:
All ASHE models

HPID883780
Outdoor Temperature Sensor



Suitable for:
HPID6, HPID10

HPID937014
Outdoor Temperature Sensor (temp defrost)



Suitable for:
HPID6, HPID10, HPID16

HPID884140

Outdoor Temperature Sensor

Suitable for:
HPID16**HPID937013**

Discharge & Suction Temperature Sensor

Suitable for:
HPID6, HPID10**HPAS10**

50uF Power Capacitor

Suitable for:
ASHE65 HPAW65
ASHE85 HPAW85**HPAS11**

60uF Power Capacitor

Suitable for:
HPAW110/130**HPID884139**

Discharge & Suction Temperature Sensor

Suitable for:
HPID16**HPID937193**

Water Temperature Sensor

Suitable for:
HPID6**HPAS12**

70uF Power Capacitor

Suitable for:
HPAW155**HPAS102**

50uF Run Capacitor

Suitable for:
ASHE65
ASHE85**HPID885265**

Water Temperature Sensor

Suitable for:
HPID10, HPID16**HPAS104**

80uF Run Capacitor

Suitable for:
ASHE125**HPAS105**

55uF Run Capacitor

Suitable for:
ASHE175

HPAS14
4uF Capacitor Fan




Suitable for:
HPAW65, ASHE175

HPAS15
6uF Capacitor Fan



Suitable for:
HPAW85, HPAW110, HPAW130, HPAW155

HPAS107
Fan Motor



Suitable for:
ASHE65, ASHE85, ASHE125, ASHE215

HPAS108
Fan Motor



Suitable for:
ASHE175

HPAS16
Fan Motor




Suitable for:
HPAW65

HPAS17
Fan Motor



Suitable for:
HPAW85, HPAW110, HPAW130, HPAW155

HPID937022
Motor



Suitable for:
HPID6

HPID885510
Motor



Suitable for:
HPID10

HPID885260

Motor



Suitable for:
HPID16

HPAS 111

Compressor



Suitable for:
ASHE65

HPAS 112

Compressor



Suitable for:
ASHE85

HPAS 113

Compressor



Suitable for:
ASHE125

HPAS 114

Compressor



Suitable for:
ASHE175

HPAS 115

Compressor



Suitable for:
ASHE215

HPID937199

Compressor



Suitable for:
HPID6

HPID934944

Compressor



Suitable for:
HPID10

HPAS22

Compressor



Suitable for:
HPAW65

HPAS23

Compressor



Suitable for:
HPAW85

HPID884116

Compressor



Suitable for:
HPID16

HPAS24

Compressor



Suitable for:
HPAW110

HPAS25

Compressor



Suitable for:
HPAW130

HPAS26

Compressor



Suitable for:
HPAW155

HPAS137

HE Circulating Pump



Suitable for:
ASHE65, AHSE85, ASHE125

HPAS138

HE Circulating Pump



Suitable for:
ASHE175

HPID885394

Pump Assembly



Suitable for:
HPID6, HPID6R32

HPID885512

Pump Assembly



Suitable for:
HPID10, HPID10R32

HPAS139

HE Circulating Pump



Suitable for:
AHSE215

HPAS29

SE Circulating Pump (6m)



Suitable for:
HPAW65, HPAW85, HPAW110, HPAW130
ASHE65, ASHE85, ASHE125

HPID885268

HE Circulating Pump



Suitable for:
HPID16, HPID16R32

HPAS30

SE Circulating Pump (15m)



Suitable for:
HPAW155, ASHE 215

HPAS117

SE Circulating Pump (8m)



Suitable for:
ASHE175

HPAS18M

PCB Board (GREEN)



Suitable for:
HPAW65, HPAW85, HPAW110, HPAW130

HPAS18Z

PCB Board



Suitable for:
ASHE65, ASHE85, ASHE125

HPID887187

Terminal PCB Board



Suitable for:
HPID6, HPID10, HPID16

HPID885765

Controller PCB Board



Suitable for:
HPID6, HPID10, HPID16

HPAS18Y

PCB Board



Suitable for:
ASHE175, AHSE215

HPID885392

Main PCB Board



Suitable for:
HPID6

HPID887479

Main PCB Board



Suitable for:
HPID6R32

HPID887489

Main PCB Board



Suitable for:
HPID10R32

HPID885501

Main PCB Board



Suitable for:
HPID10

HPID885252

Main PCB Board



Suitable for:
HPID16

HPID887228

Main PCB Board



Suitable for:
HPID13R32

HPID887746

Main PCB Board



Suitable for:
HPID17R32

HPAS121

2.4 Electronic Expansion Valve



Suitable for:
HPAW110, HPAW130, ASHE125, AHSE215

HPAS121A

1.8 Electronic Expansion Valve



Suitable for:
ASHE65, ASHE85, ASHE175

HPAS45

4-Way Valve



Suitable for:
HPAW65, HPAW85, HPAW110

HPAS48

4-Way Valve



Suitable for:
HPAW130, HPAW155

HPAS127

Small Valve Coil



Suitable for:
HPAW65, HPAW85
ASHE65, ASHE85, ASHE175, ASHE215

HPAS128

Large Valve Coil



Suitable for:
HPAW110, HPAW130, ASHE125

HPAS45A

4-Way Valve



Suitable for:
ASHE65, ASHE85, ASHE125

HPAS48A

4-Way Valve



Suitable for:
ASHE175

HPAS34

22mm 1/4 turn Isolation Valve



Suitable for:
HPAW65, HPAW85, ASHE65, ASHE85

HPAS35

28mm 1/4 turn Isolation Valve



Suitable for:
HPAW110, HPAW130, HPAW155
ASHE125, ASHE175, ASHE215

HPID927359

4 Way Valve



Suitable for:
HPID6

HPID938113

4 Way Valve



Suitable for:
HPID10

HPID884117

4 Way Valve



Suitable for:
HPID16

HPID883798

Relief Valve



Suitable for:
HPID6, HPID10, HPID16

HPID937196

Expansion Valve Coil



Suitable for:
HPID6

HPID884119

Expansion Valve Coil



Suitable for:
HPID6, HPID10, HPID16

HPID885266

Air Purge Valve



Suitable for:
HPID6, HPID10, HPID16

HPID922928

Expansion Valve



Suitable for:
HPID6

HPID883796

4 Way Valve Coil



Suitable for:
HPID6, HPID10, HPID16

HPID885511

Expansion Valve



Suitable for:
HPID10

HPID884118

Expansion Valve



Suitable for:
HPID16

HPAWSOFTA

Soft Start



Suitable for:
HPAW65, HPAW85, ASHE65

HPAWSOFTB

Soft Start



Suitable for:
HPAW110, ASHE85, ASHE175

HPAS19

12V Transformer



Suitable for:
All HPAW & ASHE models

HPAS20

24V Transformer



Suitable for:
All HPAW & ASHE models

HPAWSOFTC

Soft Start



Suitable for:
HPAW130, HPAW155, ASHE125, ASHE215

HPAS140

1A Glass Fuse (10 pack)



Suitable for:
All models

HPAS32

3/4" Male 22mm Hose



Suitable for:
HPAW65, HPAW85, ASHE65, ASHE85

HPAS33

1" Male 28mm Hose



Suitable for:
HPAW110, HPAW130, HPAW155
ASHE125, ASHE175, ASHE215

HPAS141

5A Glass Fuse (10 pack)



Suitable for:
All models

HPAS64

Base Tray Wire



Suitable for:
All HPAW & ASHE models

HPAS36

Fan Blade



Suitable for:
HPAW65

HPAS37

Fan Blade



Suitable for:
HPAW85, HPAW110, HPAW130, HPAW155

HPAS41
Fan Nut



Suitable for:
HPAW85, HPAW135, HPAW155
ASHE125, ASHE175, ASHE215

HPAS42
Fan Washer



Suitable for:
All HPAW & ASHE models

HPAS59B
Black Grill Cage



Suitable for:
All HPAW & ASHE models

HPAS80
Bolt for Grill Cage (4 pack)



Suitable for:
All HPAW & ASHE models

HPAS55
Automatic Air Vent



Suitable for:
All HPAW & ASHE models

HPAS57
Element Supply Block



Suitable for:
All HPAW & ASHE models

HPAS81
Stainless Steel Washer for Grill (4 pack)



Suitable for:
All HPAW & ASHE models

HPAS82
Plastic Washer for Grill (4 pack)



Suitable for:
All HPAW & ASHE models

HPAS58
Pressure Gauge



Suitable for:
All HPAW models

HPAS03
3kW Immersion Heater



Suitable for:
All HPAW & ASHE models

HPAS65
Neutral Connector Block



Suitable for:
All HPAW & ASHE models

HPAS91
Low Pressure Switch

Suitable for:
All HPAW models

HPAS92
Mid Pressure Switch

Suitable for:
All HPAW models

HPID807205
O Ring (P6)

Suitable for:
HPID10

HPID807207
O Ring (P4)

Suitable for:
HPID6, HPID10, HPID16

HPAS93
High Pressure Switch

Suitable for:
HPAW65, HPAW85, HPAW110, HPAW130

HPAS95
Control Panel Cover

Suitable for:
All HPAW models

HPID807209
O Ring (P3)

Suitable for:
HPID6, HPID10, HPID16

HPID807213
O Ring (P16)

Suitable for:
All HPID10, HPID16

HPAS60
Contactor 45amp Relay

Suitable for:
All HPAW models

HPAS118
Immersion Contactor 16A

Suitable for:
All ASHE models

HPID808972
O Ring (P12.5)

Suitable for:
HPID6, HPID10, HPID16

HPID910164
O Ring (P14)

Suitable for:
HPID6, HPID10, HPID16

HPID922856

O Ring (P22)



Suitable for:
HPID10, HPID16

HPID883743

Condenser Assembly



Suitable for:
HPID6

HPID884130

Defrost Heater



Suitable for:
HPID16

HPID927200

Reactor



Suitable for:
HPID6

HPID883634

Condenser Assembly



Suitable for:
HPID10

HPID884136

Condenser Assembly



Suitable for:
HPID16

HPID885259

Reactor



Suitable for:
HPID10, HPID16

HPID885264

Power Transformer



Suitable for:
HPID6, HPID10, HPID16

HPID884211

Defrost Heater



Suitable for:
HPID6

HPID885508

Defrost Heater



Suitable for:
HPID10

HPID884120

High Pressure Switch



Suitable for:
HPID16

HPID934945

Propeller Fan



Suitable for:
HPID10

HPID938112

Propeller Fan



Suitable for:
HPID16

VM 12/X

O-ring Kit



Suitable for:
MagOne filter

WPS03
Burner Fan



Suitable for:
All Spira models

WPS04X
400 Servo Motor (for brazier)



Suitable for:
All Spira models

WPS18
Electrical Connector 6-way (male)



Suitable for:
All Spira models

WPS18F
Electrical Connector 6-way (female)



Suitable for:
All Spira models

WPS05
LED Display




Suitable for:
All Spira models

WPS06
LED Display Support




Suitable for:
All Spira models

WPS10A
Ceramic Ignition Element (no housing)



Suitable for:
All Spira models

WPS10B
Ceramic Ignition Element Housing



Suitable for:
All Spira models

WPS07
Electrical Connector 7-way (female)




Suitable for:
All Spira models

WPS08
Electrical Connector 7-way (male)



Suitable for:
All Spira models

WPS10C
Ceramic Ignition Element (no wire)



Suitable for:
All Spira models

WPS22
Ignition Element Mounting Plate



Suitable for:
All Spira models

WPS12
Thermostat Cover (for pellet feed tube)




Suitable for:
All Spira models

WPS13
Pellet Feed Tube




Suitable for:
All Spira models

WPS23
Photocell Back Plate



Suitable for:
All Spira models

WPS15
Mounting Gasket



Suitable for:
All Spira models

WPS14
Gasket (for pellet feed tube)



Suitable for:
All Spira models

WPS11
Pellet Feed Thermostat




Suitable for:
All Spira models

WPS176
Draught Test Point Bolt




Suitable for:
All Spira models

WPS19
Brazier Chassis




Suitable for:
All Spira models

WPS17
Photocell Tube



Suitable for:
All Spira models

EBS14
Photocell



Suitable for:
All Spira models

WPS130X
Brazier Flame Plate (single)



Suitable for:
All Spira models

WPS199
Brazier Measuring Tool



Suitable for:
All Spira Models

WPS33A

Brazier Base Assembly



Suitable for:
Spira 5-26kW

WPS33B

Brazier Base Assembly



Suitable for:
Spira 9-36kW

WPS29XKIT

Flame hood kit (c/w 8x coach bolts & brazier flame plate)



Suitable for:
Spira 5-26kW

WPS29YKIT

Flame hood kit (c/w 8x coach bolts & brazier flame plate)



Suitable for:
Spira 9-36kW

WPS27

Control Chassis Back Plate & Base



Suitable for:
All Spira models

WPS29X

Flame Hood



Suitable for:
Spira 5-26kW

WPS32A

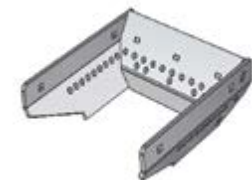
Grate Enclosure



Suitable for:
Spira 5-26kW

WPS32B

Grate Enclosure



Suitable for:
Spira 9-36kW

WPS29Y

Flame Hood



Suitable for:
Spira 9-36kW

WPS31

Coach Bolt M5 x 15 (4 pack)



Suitable for:
All Spira models

WPS 112

Circuit Board



Suitable for:
Spira 6-26kW

WPS 112B

Circuit Board



Suitable for:
Spira 9-36kW

WPS112C
Circuit Board



Suitable for:
Spira 5-18kW

WPS24
Burner Fan Gasket



Suitable for:
All Spira models

WPS168
External Auger Motor




Suitable for:
All Spira models

WPS76
Solenoid Valve




Suitable for:
All Spira models

WPS25
Boiler Water Thermistor



Suitable for:
All Spira models

MPSS02
Water Pressure Gauge (for wash down unit)



Suitable for:
All Spira models

WPS107
High Limit Thermostat



Suitable for:
All Spira models

WPS200
Cam Pin & Nut



Suitable for:
Spira 6-36kW

WPS174A
Pellet Feed Elbow Quick Release



Suitable for:
All Spira models

WPS166X
8.1 Auger/shaker Motor



Suitable for:
All Spira models

WPS108
Boiler Momenry Switch (double pole on/off)



Suitable for:
All Spira models

WPS111
Pressure Switch



Suitable for:
All Spira models

WPS35
5-Way Main Connection (male)



Suitable for:
All Spira models

WPS37
5-Way Main Connection (female)



Suitable for:
All Spira models

WPS44A
Secondary Cleaning Door & Gasket



Suitable for:
Spira 5-26kW (post Nov 2014)

WPS145A
Secondary Cleaning Door & Gasket



Suitable for:
Spira 9-36kW (post Nov 2014)

WPS72
Primary Cleaning Door (for shaker chamber)



Suitable for:
Spira 5-26kW

WPS73
Primary Cleaning Door (for shaker chamber)



Suitable for:
Spira 9-36kW

WPS62
Shaker Arm Assembly




Suitable for:
Spira 5-26kW

WPS63
Shaker Arm Assembly




Suitable for:
Spira 9-36kW

WPS44
Secondary Cleaning Door & Gasket




Suitable for:
Spira 5-26kW (pre Nov 2014)

WPS145
Secondary Cleaning Door & Gasket




Suitable for:
Spira 9-36kW (pre Nov 2014)

WPS77
Primary Spiral Baffle (3mm)



Suitable for:
All Spira models

WPS57
Secondary Spiral Baffle (1.5mm)



Suitable for:
All Spira models

WPS78
Spiral Hanger

Suitable for:
Spira 5-26kW

WPS79
Spiral Hanger

Suitable for:
Spira 9-36kW

WPS85
Cleaning Mechanism Cam

Suitable for:
All Spira models (post Nov 2014)

WPS85B
Grub Screw (for cleaning mechanism)

Suitable for:
All Spira models

WPS88
Door Interlock Microswitch

Suitable for:
All Spira models

WPS81
Spring Anchor (90mm)

Suitable for:
All Spira models

WPS86
Cleaning Motor Mounting Flange

Suitable for:
All Spira models

WPS40
Flue Fan Sealing Gasket

Suitable for:
All Spira models

WPS106
Cleaning Door Handle

Suitable for:
All Spira models

WPS82
Cleaning Door Mechanism Spring

Suitable for:
All Spira models

WPS56
Fan Box Secondary Gasket

Suitable for:
All Spira models

WPS56A
Fan Box Access Door Gasket

Suitable for:
All Spira models

WPS38
Flue Fan Cleaning Solenoid (male)



Image coming soon

Suitable for:
All Spira models

WPS39
Flue Fan Cleaning Solenoid (female)



Image coming soon

Suitable for:
All Spira models

WPS89
Mounting Gasket (for shaker chamber)



Suitable for:
All Spira models

WPS74
1 m Fibre Rope (for shaker chamber)



Suitable for:
All Spira models

WPS41
Fan Box



Suitable for:
All Spira models pre Sept 2014

WPS46
Flue Fan Motor



Suitable for:
All Spira models

WPS97
Combustion Chamber Baffle



Suitable for:
Spira 5-26kW


WPS110
Control Panel Cover



Image coming soon

Suitable for:
All Spira models

WPS173
Flue Box Air Dampner



Suitable for:
All Spira models

WPS55
Draft Stabiliser



Suitable for:
All Spira models

WPS102
2m Cleaning Door Robe (for combustion chamber)



Suitable for:
All Spira models

WPS103
Combustion Chamber Cleaning Door



Image coming soon

Suitable for:
All Spira models

WPS172
Cam (for shaker chamber)



Suitable for:
All Spira models

WPS178
Air Restrictor Plate



Suitable for:
Spira 5-18kW

WPS175
Hopper Selector Switch




Suitable for:
All Spira Hoppers

WPS164
Low Limit Switch



Suitable for:
All Spira Hoppers

WPS159
Rubber Diaphragm



Suitable for:
All Spira models

WPS100
Ash Pan



Suitable for:
Spira 5-26kW

WPSWASHDOWN6-26
Washdown Kit

Image coming soon

Suitable for:
Spira 6-26kW

WPSWASHDOWN9-36
Washdown Kit

Image coming soon

Suitable for:
Spira 9-36kW

WPS101
Ash Pan




Suitable for:
Spira 9-36kW

WPS99
Ash Pan Handles




Suitable for:
All Spira models

WPS167
Single hopper right hand auger (c/w motor)



Suitable for:
Spira single boilers

WPS167X
Single hopper left hand auger (c/w motor)




Suitable for:
Spira single boilers

WPV01
Motor




Suitable for:
SpiraVac

WPV02
Programmable Relay



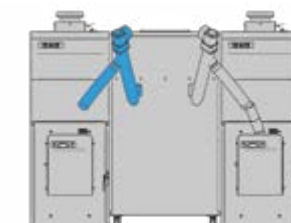
Suitable for:
SpiraVac

WPS169
Central hopper right hand auger (c/w motor)



Suitable for:
Spira double boilers

WPS169X
Central hopper left hand auger (c/w motor)



Suitable for:
Spira double boilers

WPV03
Air Pressure Switch



Suitable for:
SpiraVac

WPV04
11 Pin Relay Base



Suitable for:
SpiraVac

WPB6/26
Burner



Suitable for:
Spira 6-26kW

WPB9/36
Burner



Suitable for:
Spira 9-36kW

WPV05
11 Pin Relay



Suitable for:
SpiraVac

WPV06
Relay Clip



Suitable for:
SpiraVac

WPV07
Motor & Gear Box



Suitable for:
SpiraVac

WPV08
Isolator



Suitable for:
SpiraVac

WPV13F
3 Pin Female Plug




Suitable for:
SpiraVac

WPV13M
3 Pin Male Plug



Suitable for:
SpiraVac

WPV09
Auger Spiral



Suitable for:
SpiraVac

WPV10
Auger Shaft



Suitable for:
SpiraVac

WPV15F
6 Pin Female Plug



Suitable for:
SpiraVac

WPV15M
6 Pin Male Plug



Suitable for:
SpiraVac

WPV11
Auger Clamp



Suitable for:
SpiraVac

WPV12
M8 Bolts



Suitable for:
SpiraVac

WPV22F
4 Pin Female Plug



Suitable for:
SpiraVac

WPV22M
4 Pin Male Plug



Suitable for:
SpiraVac


WPV16
Air Hose Tube



Image coming soon

Suitable for:
SpiraVac

WPVCLIP/X
60-64 Rubber lined clip for vacuum hose



Suitable for:
SpiraVac

WPVDAM110
Dam for 110kg Hopper



Suitable for:
SpiraVac

WPVDAM140
Dam for 140kg Hopper



Suitable for:
SpiraVac

WPV18
View Cover



Image coming soon

Suitable for:
SpiraVac


WPV19
Filter Unit



Image coming soon

Suitable for:
SpiraVac

WPVDAM200
Dam for 200kg Hopper



Suitable for:
SpiraVac


WPV20
Bubble Gasket



Image coming soon

Suitable for:
SpiraVac

WPV21
Fully Programmed Smart Relay



Suitable for:
SpiraVac

VEC001
Front Door Lock & Keys



Image coming soon

VEC002
Electrical Isolation Switch



VEC006
Power Unit (for PCB board)



VEC007
Lambda Sensor



VEC002A
On/Off Dial (for isolation switch c/w turn bar)



Image coming soon

VEC003
Display Board (LED Screen)



VEC008
Lambda Sensor PCB Board



VEC009
Complete Heat Exchanger Cover c/w manifold



VEC004
On/Off Switch



VEC005
PCB Board



VEC010
Nozzle Tube (for washdown)



Image coming soon

VEC011
Nozzle Holder (for washdown)




Image coming soon

VEC012
Primary Heat Exchanger Spirals




Image coming soon

VEC013
Secondary Heat Exchanger Spirals
(LHS - 41/2 Turns)




Image coming soon

VEC020
Vertical Combustion Chamber Baffle



Image coming soon

VEC021
Horizontal Combustion Chamber Baffle




Image coming soon

VEC014
Secondary Heat Exchanger Spirals
(LHS - 21/2 Turns)



Image coming soon

VEC015
Shaker Box Gasket



Image coming soon

VEC022
Brazier Front Plate c/w catch




Image coming soon

VEC023
Brazier Base Plate




Image coming soon

VEC018
Ash Pan




Image coming soon

VEC019
Multi Purpose Tool



Image coming soon

VEC024
Complete Brazier Assembly




Image coming soon

VEC025
Flame Pot



Image coming soon

VEC026
Air Pressure Switch

A black rectangular air pressure switch with a blue circular component on top and a grey port on the side.

VEC027
Manual Air Vent

A placeholder icon of a camera with the text "Image coming soon" below it.

WPS10A
Ceramic Ignition Element (no housing)


A ceramic ignition element with a blue ceramic tip, a black plastic housing, and a red wire with a blue connector.

Suitable for:
All Vecta models


WPS10B
Ceramic Ignition Element Housing

A long, thin, black metal rod with a small notch at one end.

VEC028
Flue Fan Motor

A placeholder icon of a camera with the text "Image coming soon" below it.

VEC029
Actuator Board

A placeholder icon of a camera with the text "Image coming soon" below it.

VEC030
Fire Damper Motor (Belimo)

An orange and black fire damper motor with a black cable and a metal mounting bracket.

VEC031
Linear Motor (Lynex)

A black linear motor with a silver shaft and a black mounting bracket.

Terms of trading

*Terms and conditions may apply.

E & OE

Further information

12 month parts only statutory warranty on all spares, subject to terms and conditions.

The contents of this leaflet are protected by copyright and nothing may be reproduced without prior permission from Grant UK.

E & OE



Grant Engineering (UK) Ltd

t: +44 (0)1380 736920 f: +44 (0)1380 736991
e: sales@grantuk.com w: www.grantuk.com



This leaflet is accurate at the time of printing but as Grant UK has a policy of continual improvement it may be superseded. We reserve the right to amend specifications without prior notice. The statutory rights of the consumer are not affected. All products manufactured under I.S. EN ISO 9001. Grant UK additionally holds ISO 14001 accreditation.

™THE GRANT 'EZ-FIT FLUE' SYSTEM is a trade mark of Grant Engineering Limited.

©Grant Aeronia, Grant Amba, Grant Spira, Grant SpiraVac, Grant SpiraPod, Grant Vecta, Grant Vortex, Grant VortexBlue, Grant VortexAir, Grant Solar, Grant Aurora, Grant Sahara, Grant CombiSOL, Grant WinterSOL, Grant MonoWave, Grant DuoWave, Grant ThermaWave, Euroflame and Multi Pass are registered trade marks of Grant Engineering Limited. The contents of this leaflet are fully protected by copyright and nothing may be reproduced without permission from Grant UK.

