

---

# BRISTAN

---

## Installation Instructions and User Guide

Round Pop-Up Waste with  
Overflow

### Models Covered:

W BATH06 C

**Please keep this booklet for future  
reference.**

**Installer, when you have read these  
instructions please ensure you leave  
them with the user.**

# General Information

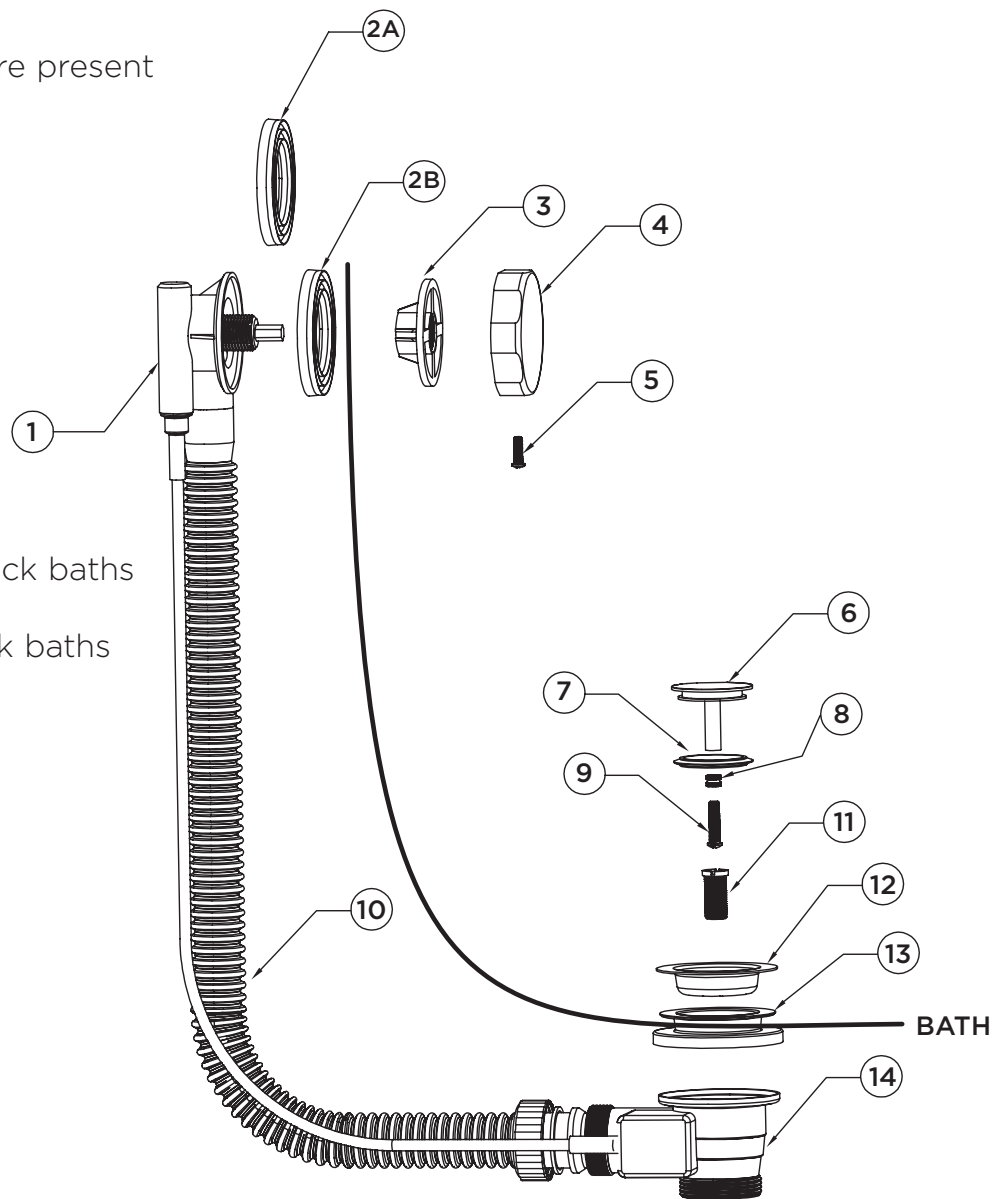
Thank you for choosing Bristan, the UK's leading taps and showers expert. We have designed this product with your enjoyment in mind. To ensure that it works to its full potential, it needs to be fitted correctly. These fitting instructions have been created to give you all of the information you need and, if you need any further help, please do not hesitate to give us a call on 0330 026 6273.

## Installation

Identify all components are present prior to installation.

### Components

1. Overflow Body
2. A - Grey Overflow Washer for 5-15mm thick baths  
B - Black Overflow Washer for <5mm thick baths
3. Locking Nut
4. Overflow Face/Control
5. Overflow Screw
6. Plug
7. Plug Seal
8. Nut
9. Adjusting Screw
10. Overflow Pipe
11. Waste Screw
12. Flange
13. Waste Seal
14. Waste Body



# Installation

1. Fit the overflow pipe (10) onto the connections on the waste body (14) and overflow body (1). Use a WRAS approved silicon sealant where necessary.
2. Push the waste seal (13) through the bath hole, ensuring all edges are flat to the surface of the bath.
3. Place the waste body (14) under the bath, and the flange (12) above the bath. Screw the waste screw (11) into the flange to secure the waste body (14) in place.
4. Place the overflow body (1) and overflow washer (2) behind the bath. Depending on the thickness of your bath, use the grey overflow washer (2A) if the bath is 5-15mm thick, or the black overflow washer (2B) if the bath is less than 5mm thick.
5. Secure the overflow body using the locking nut (3). Place the overflow face (4) over the locking nut and secure in place with the overflow screw (5).
6. To assemble the plug (6), Fit the nut (8) onto the adjusting screw (9) and fit to the plug (6).
7. Turn the overflow face (4) to pop-up the plug. Check that the plug pops up sufficiently. If adjustment is needed, set the plug in the closed/lowered position.
8. Unscrew the nut (8). Screw/unscrew the adjusting screw (9) in the plug so that it is almost touching the operating lever inside the waste body (14). Repeat step 7. Tighten the nut (8) if the plug operates correctly.
9. Check all joints & connections for any leaks.

# Maintenance

Bristan products are made from premium materials, with hand polished, electroplated, PVD or EPD finishes.

Your taps should be regularly cleaned with warm water, a mild pH-neutral liquid soap and polished with a soft cloth. Any residues from soap, toothpaste etc. can cause blemishes if not rinsed off straight after use.

Household bleaches and cleaners contain harsh chemicals and may damage the surface finish. Avoid using abrasive cloths, scouring pads, scrub sponges, steel wool or anything similar.

Issue: D3

Part Number: W BATH06

# **BRISTAN**

## **Bristan Group Ltd.**

**UK:** Bristan Group, B78 1SG.

**EU:** Masco Europe S.à.r.l.

14 Rue Strachen

6933 Mensdorf

Luxembourg

**Customer Service:** +44330 026 6273

**Web:** [www.bristan.com](http://www.bristan.com)

**Email:** [enquire@bristan.com](mailto:enquire@bristan.com)

## **A Masco Company**

At Bristan, we want to make things as easy as possible for our customers. That's why we offer solid guarantees on all our products, effective from the date of purchase, to give you peace of mind.

To start your free guarantee simply scan the QR code and register your product.  
Alternatively visit [www.bristan.com/register](http://www.bristan.com/register).

For any other queries, please call our Customer Service on **0330 026 6273** where our expert team of advisors will be able to offer you any help and advice.

For full guarantee terms and conditions visit <https://www.bristan.com/customer-service/guarantees>

