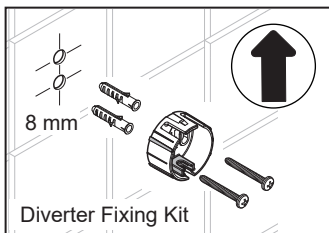
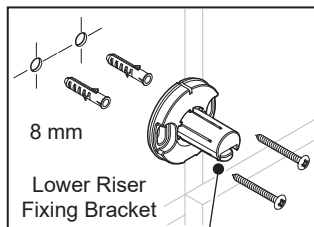
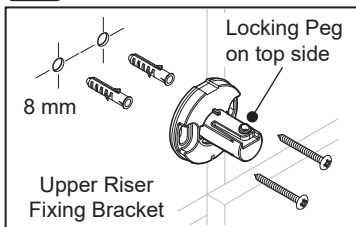


3

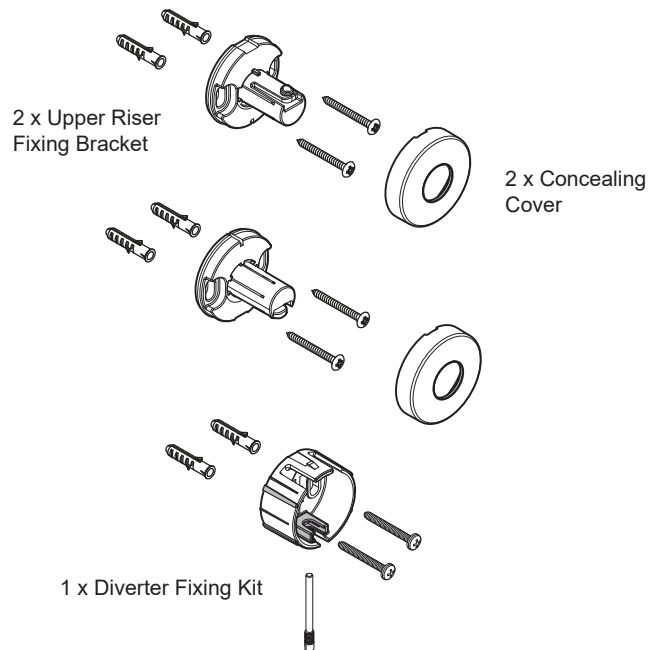


Remove and discard the existing brackets, wall plugs and screws.

Install the new brackets and concealing covers using supplied wall plugs and screws.

Fit the shower fittings in reverse order.

Mira Wall Brackets - Dual Outlet Fittings GP1502001W



**Must be fitted by a competent tradesperson.
These instructions must be left with the user**

Registered Office:
Cromwell Road,
Cheltenham,
Gloucestershire
GL52 5EP

EU Importer address:
Kohler France S.A.S.
30 Boulevard de la Bastille,
75012 Paris,
France

mira
SHOWERS

Telephone: 0800 001 4040
E-mail: askus@mirashowers.co.uk

Mira is a registered trade mark of Kohler Mira Limited.
The company reserves the right to alter product specifications without notice.
www.mirashowers.co.uk



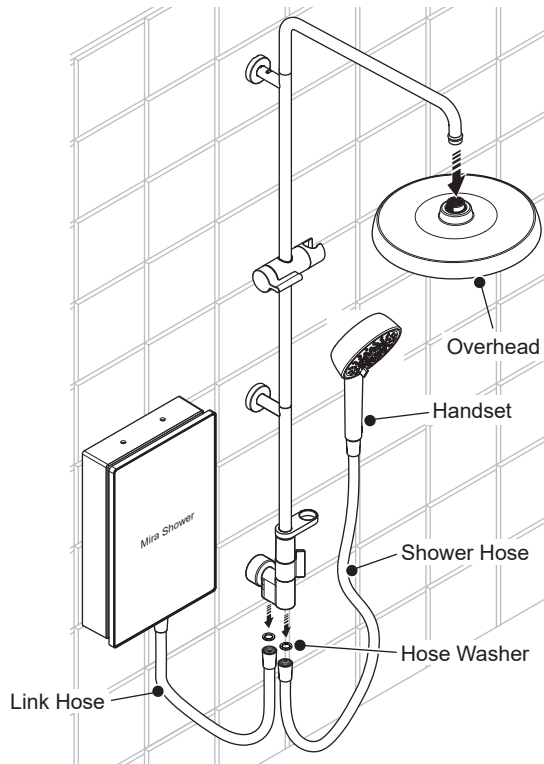
Genuine Mira Spare Parts

Showering perfection

mira
SHOWERS

Replace the Wall Brackets

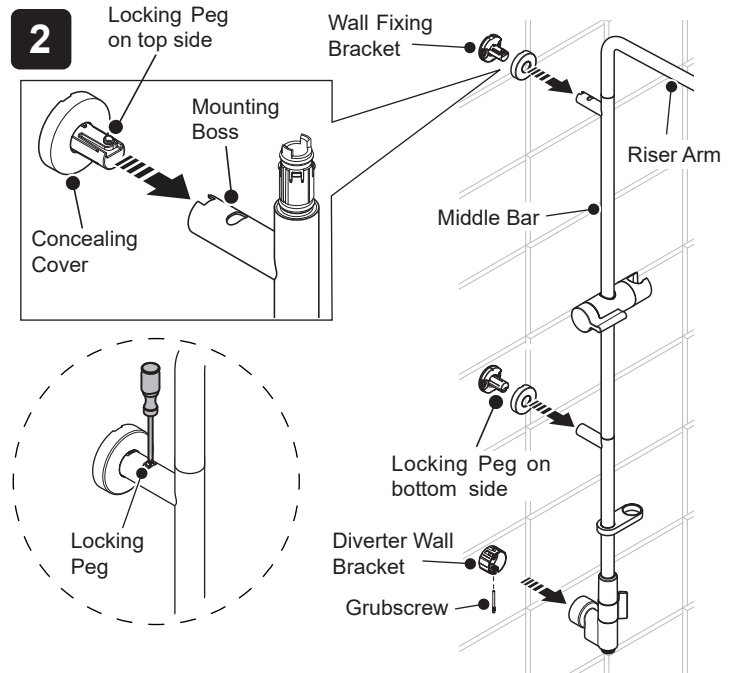
1



Carefully remove the overhead from the fittings.
Disconnect the hoses from the diverter.
Retain all parts carefully for reinstallation.

1557367-W9-A

2



Loosen and remove the grubscrew to pull off the diverter from wall bracket. Discard the grubscrew.

Use a screwdriver to push and hold down the locking peg through the hole in the mounting boss on the riser and middle bar.

Pull off shower fittings and concealing cover from the wall fixing bracket. Discard the concealing cover.

1557367-W9-A