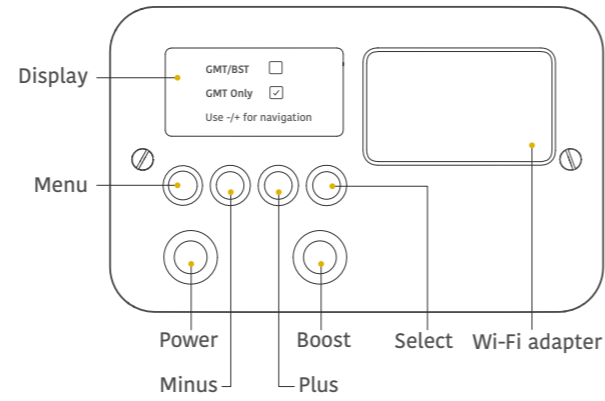


All the screens are for illustration only.

1 Know your E7+

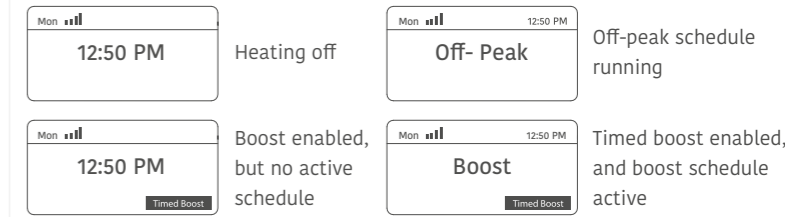


Note: represents **Select** button through out the manual

2 The buttons explained

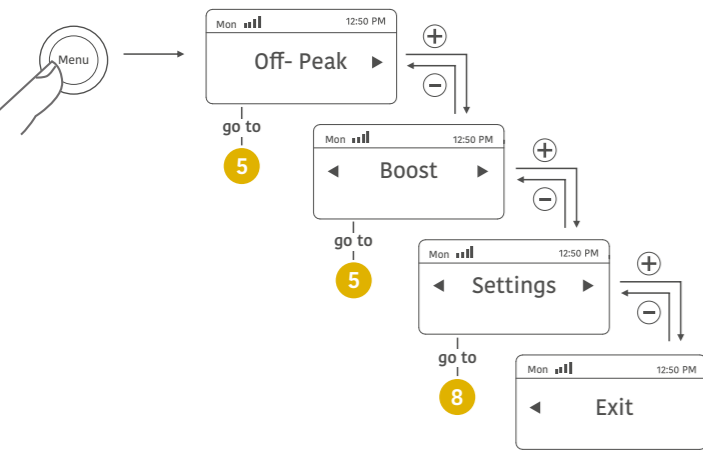
Button	Function(s)
Power	To On/Off the device
Select	<ul style="list-style-type: none"> To enter a setting/option To confirm a selection To enable/disable timed boost , when on home screen
Plus (+)	<ul style="list-style-type: none"> To increase the date, time and year To navigate between different menus/menu items in the forward direction
Minus (-)	<ul style="list-style-type: none"> To decrease the date, time and year To navigate between different menus/menu items in the backward direction
Menu	<ul style="list-style-type: none"> To enter the main menu To return back to previous menu from within a submenu/selection To enable bluetooth pairing mode
Boost	To set Boost manually

3 Home screens



- A screen with no symbol shows that the Wi-Fi module is not plugged in
- E7+ is connected to the Wi-Fi network, but the signal strength is poor
- E7+ is connected to the Wi-Fi network, but the signal strength is weak
- E7+ is disconnected to the Wi-Fi network, and the signal strength is excellent
- Wi-Fi module is plugged in, but not connected to the network

4 Menus



5 Setting off peak / Boost schedule



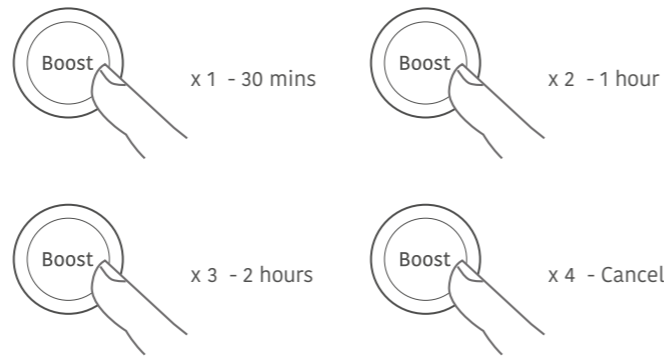
Note: Boost schedule runs only if Timed boost is selected. To activate timed boost, press on the home screen.

i Default schedule (Monday to Sunday)

Off peak	1st On	1st Off	2nd On	2nd Off	3rd On	3rd Off
	2:15 am	7:15 am	12:00 pm	12:00 pm	12:00 pm	12:00 pm

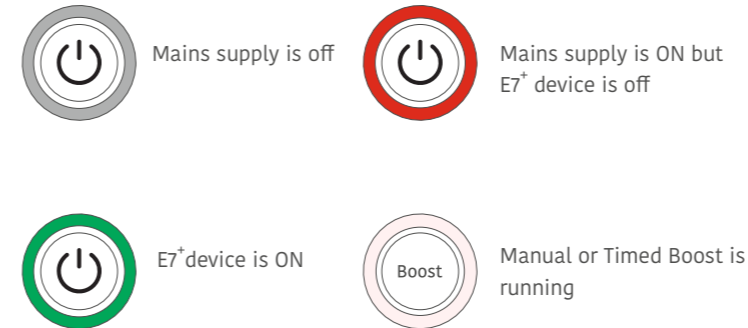
Boost	On	Off
	12:00 am	12:00 am

6 Activating manual boost

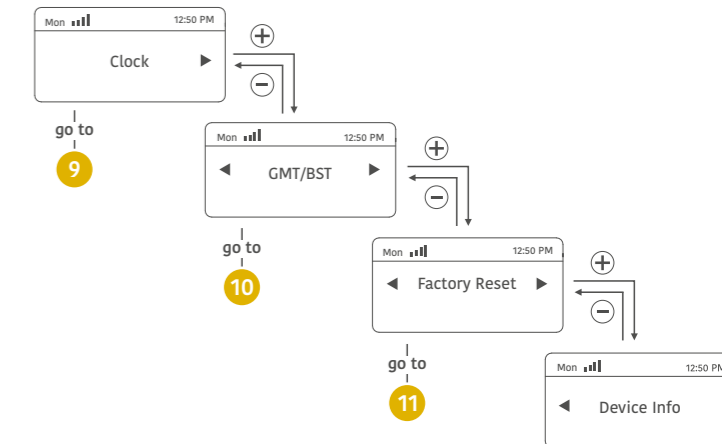


Note: This works only when no other scheduled operation is active. It also overrides the running manual boost.

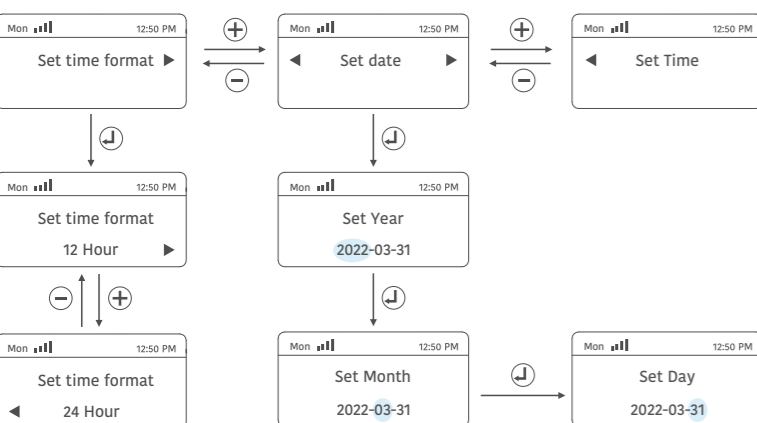
7 LED indications



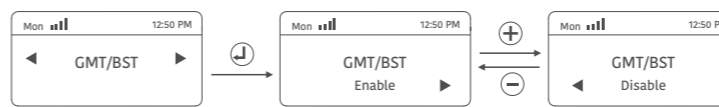
8 General settings



9 Setting time format and clock



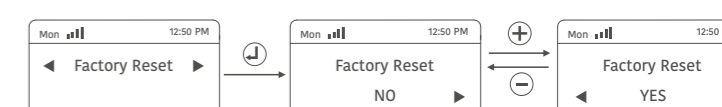
10 Selecting day light switching option



GMT/BST - Switching time will be changed by one hour. In the GMT/BST mode the clock display will match the actual switching time.

GMT ONLY - Switching will always take place at GMT times (summer and winter). The clock display will tell the correct time of day.

11 Resetting the device

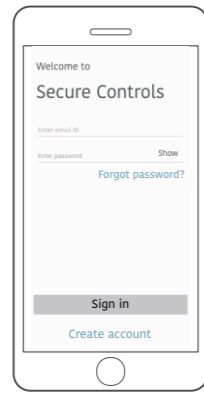
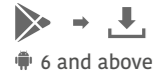


12 Downloading the mobile app

Download Secure Controls mobile app

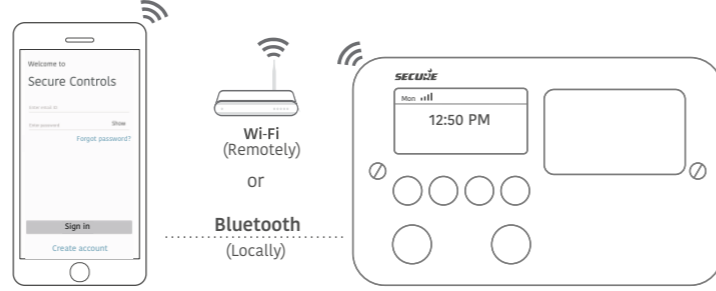


Or

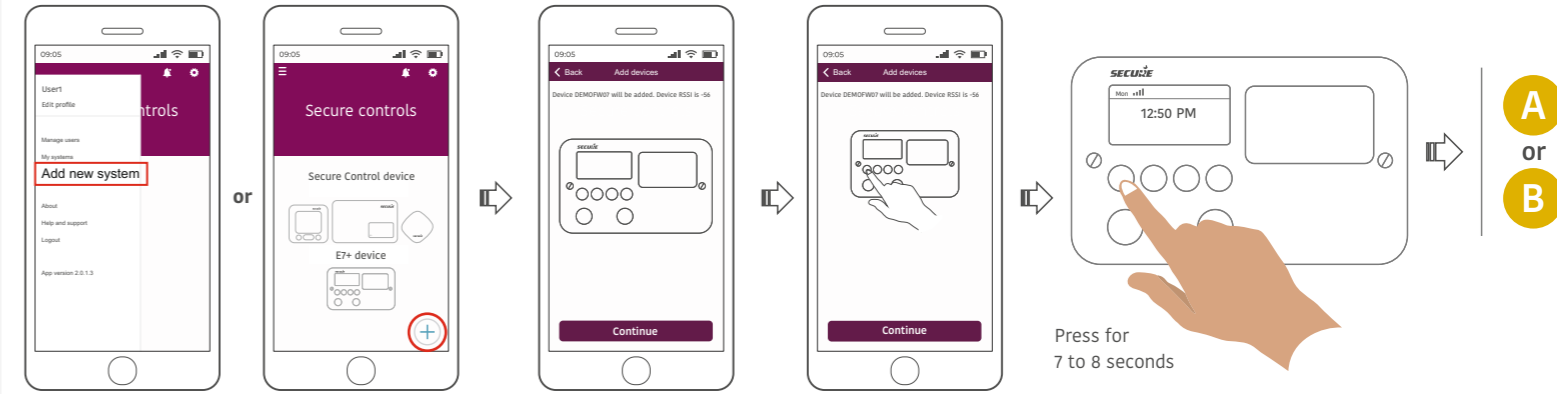


1. Open app and create an account to sign-in
2. Perform steps as guided by the mobile app

13 Pairing options



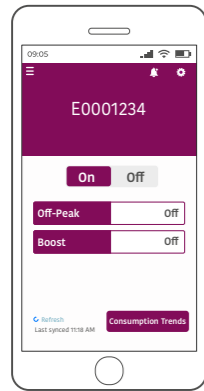
14 Adding device(s)



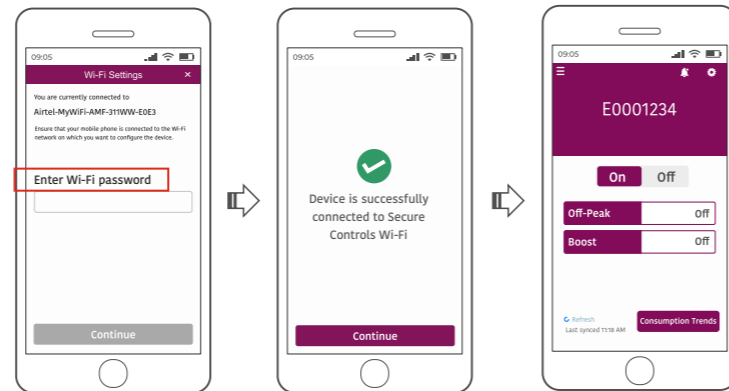
Press for 7 to 8 seconds

A or B

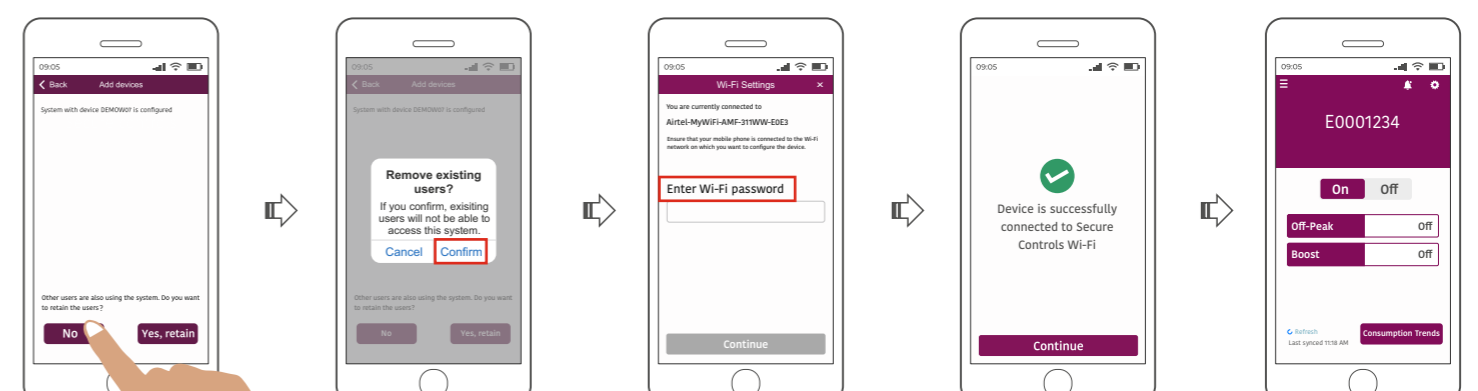
A Connecting locally (without Wi-Fi module)



B Connecting remotely (with Wi-Fi module)



C Switching from Bluetooth to Wi-Fi



Note: To switch to Wi-Fi, insert Wi-Fi module and refer section C.

Note: The mobile should be already connected to the Wi-Fi or else, the app will continue to interact with the device on Bluetooth.

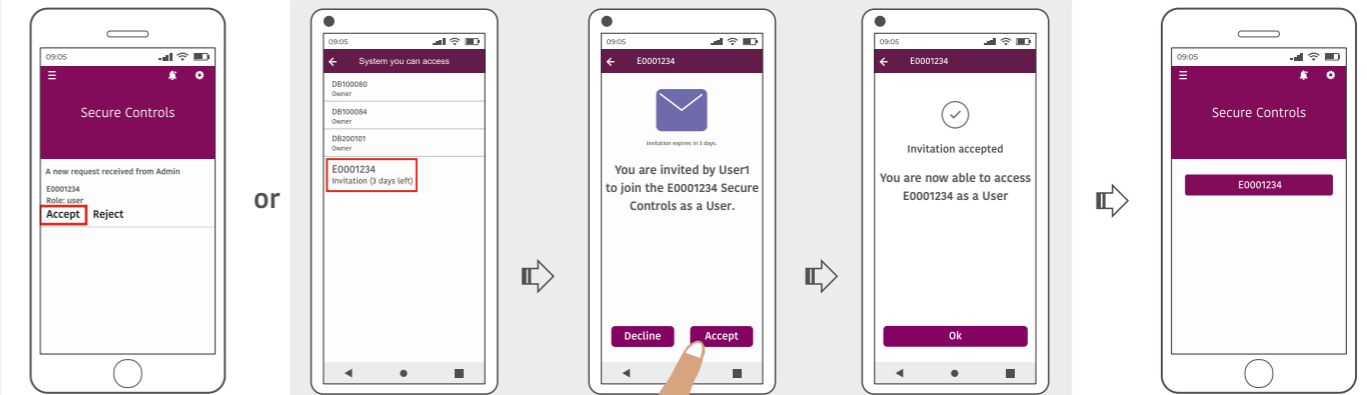
Note: If you were previously using the app via Bluetooth only, and want to switch to Wi-Fi, you will need to add the device again (refer section 14).

15 Inviting users over Wi-Fi



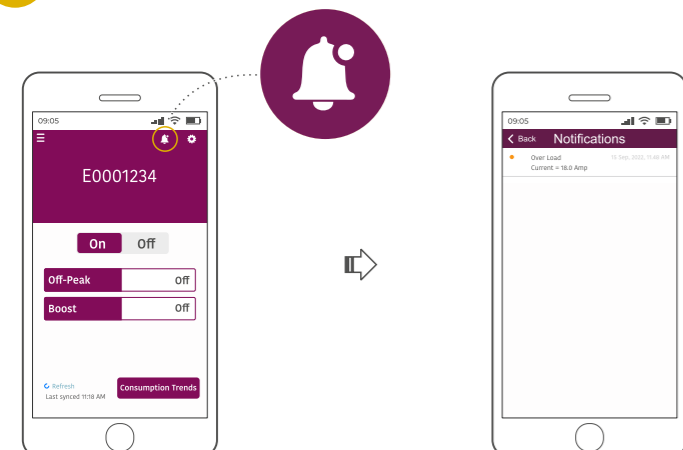
Note: Once you have connected your system to Wi-Fi you can now invite other users

16 Accepting invitation



Note: To accept the invitation, the user must have already downloaded the app.

17 Alarm notification of persisting event



18 Frequently asked questions

Query	Probable reason(s)
I am receiving the message "Cannot establish communication with the device. Try again." What is the reason?	<ul style="list-style-type: none"> • If an E7+ device is connected to your phone on Bluetooth and another user tries to communicate with the same device at the same time on Bluetooth this message can happen. • If two users are connected to the same device using Bluetooth, and User 1 tries to connect remotely over Wi-Fi and removes other users, then the other user will not be able to communicate. User 1 will have become the owner and now need to send an invite via email from the app to the other users. Alternatively, other user can re-scan and add the device over Bluetooth.

Why is my E7+ not visible on my app dashboard (when connected on Bluetooth)?	<ul style="list-style-type: none"> • If you use another phone than the one you registered with, you will also need to choose add new system and re-scan. • If you log out of the app then you will need to re-scan your E7+ from the app left menu and select add new system. Select yes when asked about retaining existing users.
I cannot scan the QR code for adding a new device.	Try entering the details manually using the mobile app. You can get the details from device info under general settings (refer section 8).
Why my device's status is not updated on the mobile app (when connected on Bluetooth)?	If the device's status/configuration is changed (like boost/off-peak) after one minute of inactivity on the app, the same is not automatically reflected. You need to refresh the app to view the latest updates.



www.securemeters.com
Secure Meters (UK) Ltd
Secure House, Lulworth Close,
Chandlers Ford, Eastleigh,
SO53 3TL, England



BGX701 - 360