

megaflo

BY HEATRAESADIA



Domestic &  
commercial  
cylinder  
range guide



# Megaflo.

## The Obvious Choice.

Precision engineered in Britain. Powerful, yet energy efficient. With fast heat recovery and a flow rate up to 76 litres per minute, Megaflo will deliver all the hot water you need.

Today's modern lifestyles mean we all have greater demand for hot water and how we use it. At home and in the workplace there is a growing need to service multiple users at the same time, whilst striving for greater performance and reliability that is affordable and low in environmental impact.

Megaflo heats, stores and delivers water at mains pressure across multiple outlets in both homes and

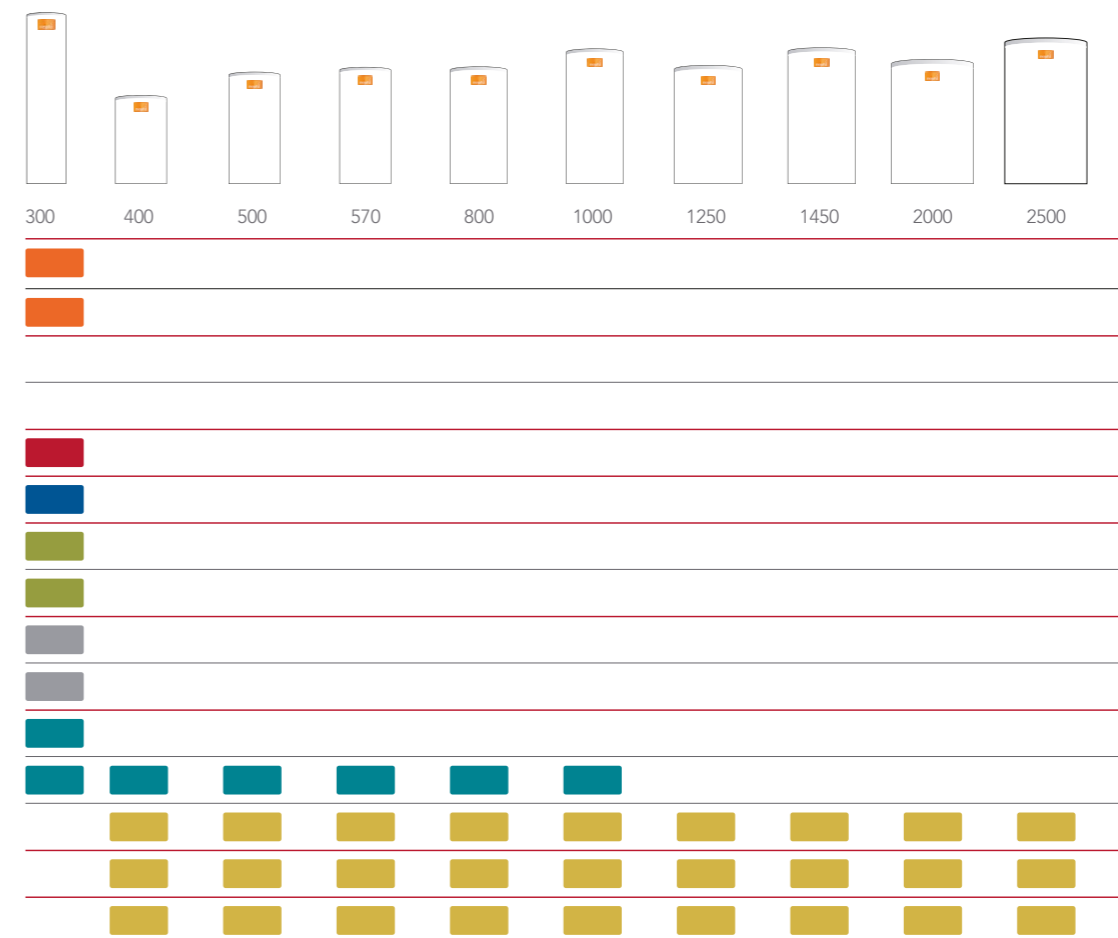
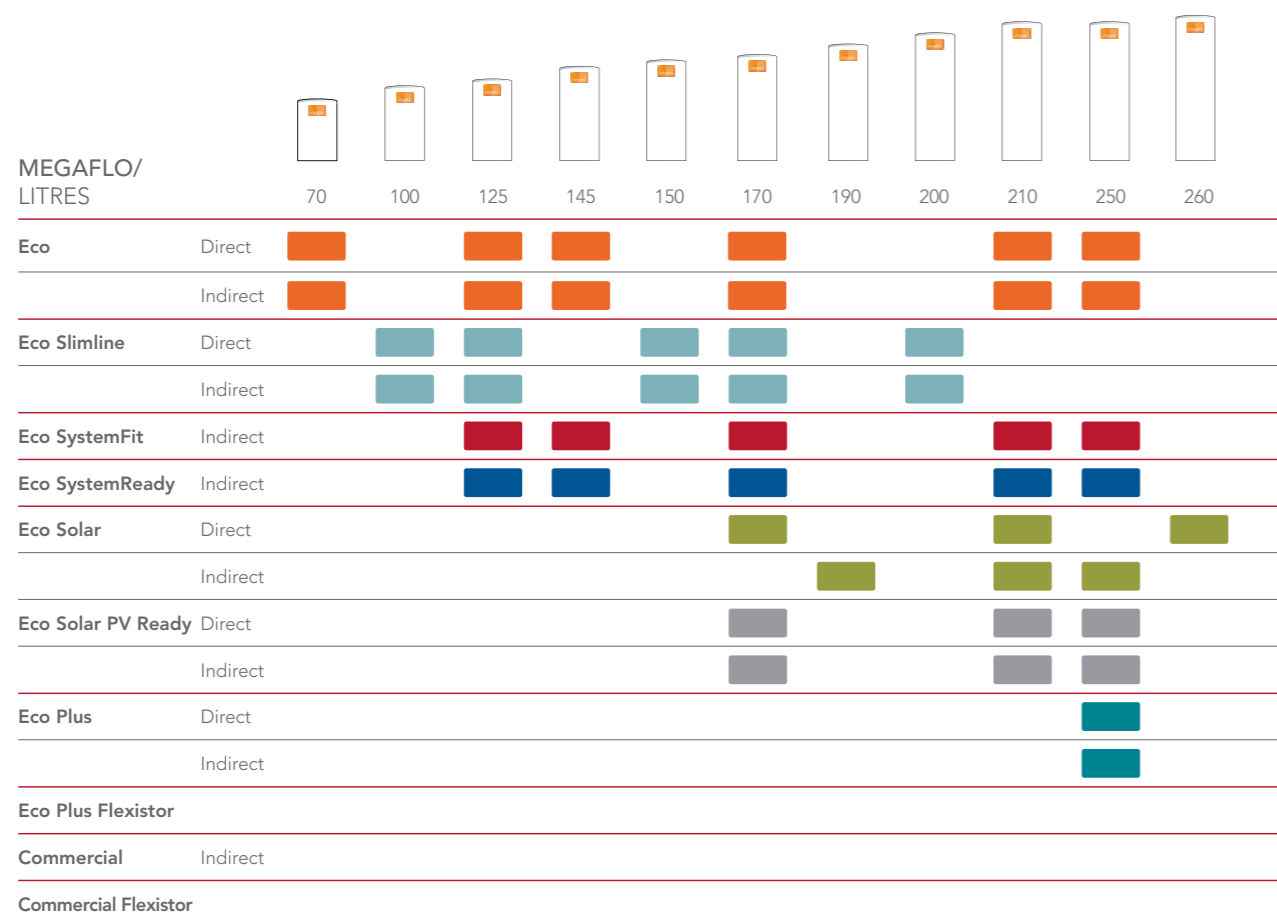
commercial buildings. At home, Megaflo removes your need for an old fashioned and unreliable hot water storage tank replacing it with a streamlined, floor mounted unit which is flexible to a variety of installation locations.

In commercial applications, Megaflo can deliver at unprecedented pressures, negating the need for breaks in system design for upper levels in tall buildings.

All Megaflo models are designed for minimum heat loss and energy efficiency, in turn making your hot water system financially efficient too.



With a range extending to over one hundred variants that consider your personal needs and installation criteria, we are confident that we can help you find a MegaFlo that delivers the ultimate in performance and reliability to your property.





# Megaflo Eco

## DIRECT AND INDIRECT

Megaflo Eco unvented cylinders are your first choice for conserving energy while providing superior hot water performance.

With a lifetime warranty\* for total peace of mind and made in the UK from high quality duplex stainless steel, Megaflo Eco is unrivalled in delivering high power showering and fast filling baths, even at low pressures.

Featuring our internal expansion system and complete with all necessary safety controls and drain valve, installation is quicker and easier too.

### FEATURES

Internal expansion with floating baffle

New robust and safe handle

Large heat exchanger coil

High grade duplex stainless steel

Delivers up to 76 litres per minute of hot water at 3 bar pressure

30 year warranty\*

### BENEFITS

Neat appearance, saves space and reduces installation time

For improved maneuverability

Best in class recovery and heat up times

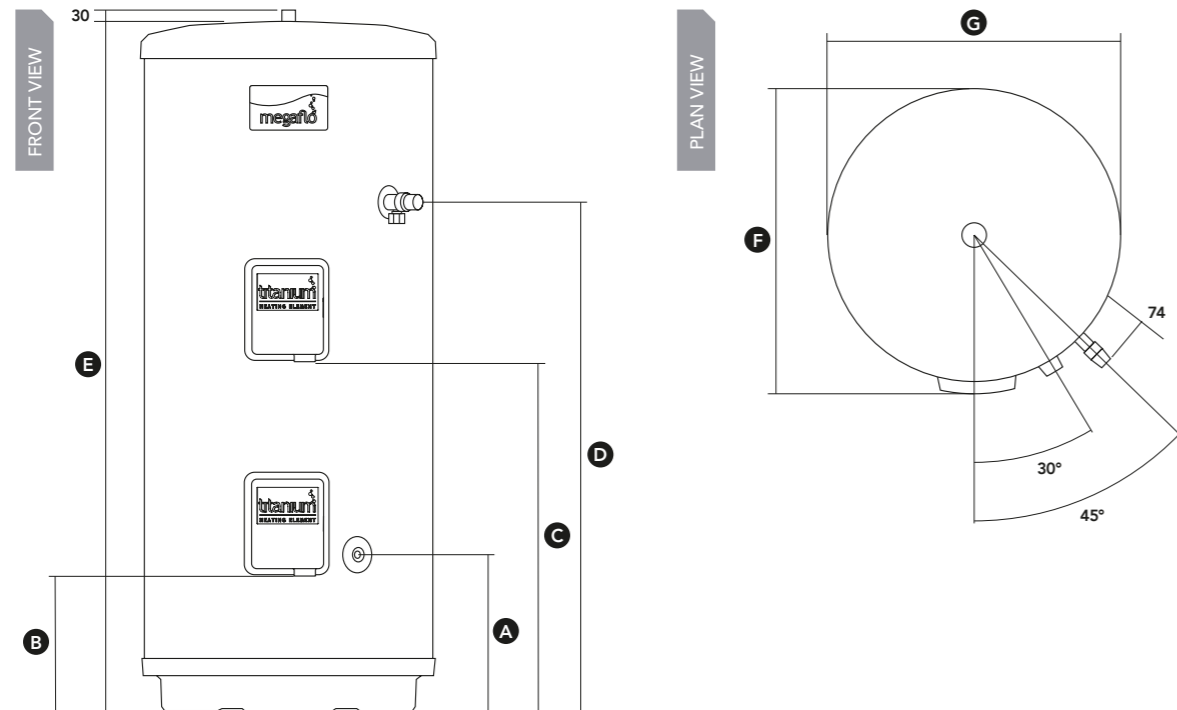
High corrosion resistance and a high strength to weight ratio

Outstanding hot water performance without the need for shower pumps or tanks

For complete peace of mind

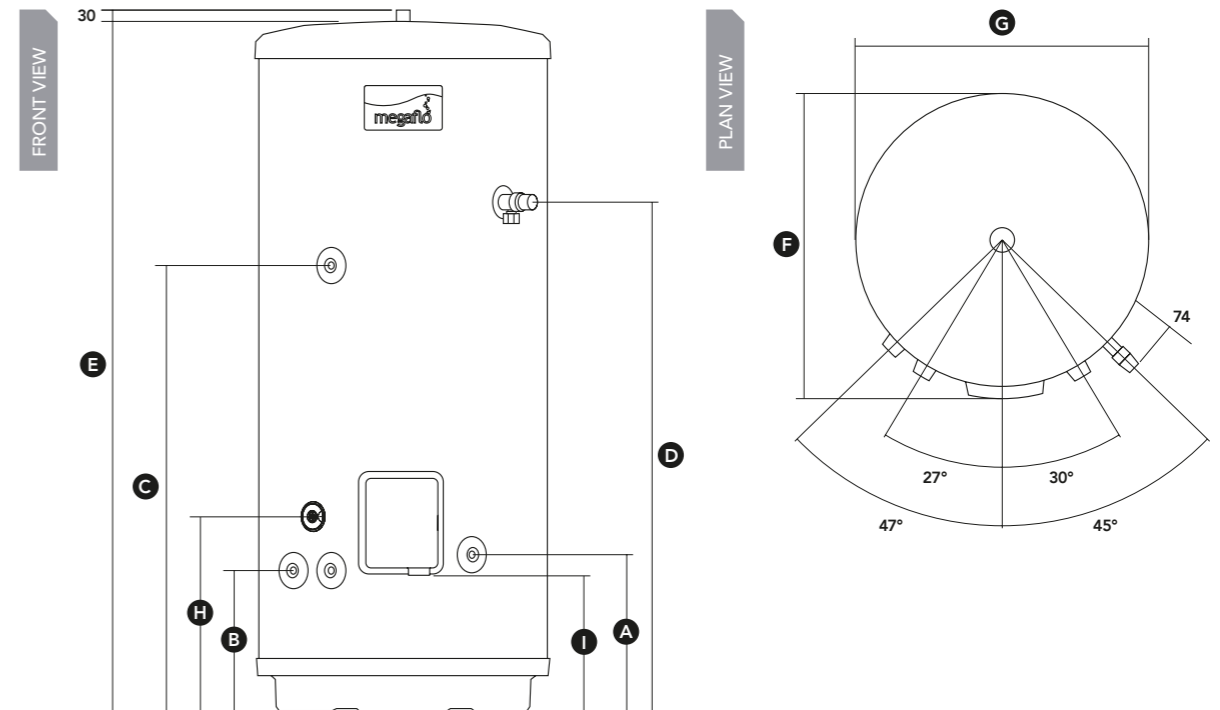
\*30 year warranty on inner tank for all Megaflo cylinders and 2 years on all other components

## Megaflo Eco Direct



Product	Empty kg	Full kg	Nominal capacity litres	ErP rating	DIMENSIONS							Order code
					A DHW inlet mm	B Cable entry lower mm	C Cable entry upper mm	D T&P relief valve mm	E Height mm	F Depth mm	G Width mm	
70d	23	115	70	B	414	275	-	495	802	600	579	95:050:460
125dd	25	165	125	B	414	275	549	794	1102	600	579	95:050:462
145dd	31	183	145	C	414	275	580	895	1229	600	579	95:050:464
170dd	34	216	170	C	414	275	705	1020	1384	600	579	95:050:466
210dd	38	237	210	C	414	275	801	1095	1486	600	579	95:050:468
210ddd	40	237	210	C	414	275	1009	1323	1486	600	579	95:050:480
210dddd	42	237	210	C	414	275	801	1095	1486	600	579	95:050:476
250dd	46	282	250	C	414	275	1009	1323	1738	600	579	95:050:470
250ddd	48	282	250	C	414	275	1009	1323	1738	600	579	95:050:471
250dddd	50	283	250	C	414	275	1009	1323	1738	600	579	95:050:477
300dd	56	339	300	C	414	275	1313	1574	2053	600	579	95:050:473
300ddd	58	339	300	C	414	275	1313	1574	2053	600	579	95:050:474
300dddd	60	339	300	C	414	275	1313	1574	2053	600	579	95:050:478

## Megaflo Eco Indirect



Product	Empty kg	Full kg	Capacity litres	ErP rating	DIMENSIONS										Order code
					A DHW inlet mm	B Primary coil connections mm	C Secondary return mm	D T&P relief valve mm	E Height mm	F Depth mm	G Width mm	H Sensor pocket mm	I Cable entry lower mm		
70i	25	125	70	B	414	373	-	495	802	600	579	410	275	95:050:461	
125i	31	180	125	B	414	373	709	794	1102	600	579	410	275	95:050:463	
145i	35	204	145	B	414	373	810	895	1229	600	579	410	275	95:050:465	
170i 2	43	220	170	B	414	373	934	1020	1384	600	579	410	275	7817127	
210i 2	47	240	210	B	414	373	1011	1095	1486	600	579	410	275	7817128	
250i 2	54	291	250	C	414	373	1238	1323	1738	600	579	410	275	7817129	
300i 2	60	340	300	C	414	373	1526	1574	2053	600	579	410	275	7817130	



# Megaflo Eco Slimline

## DIRECT AND INDIRECT

A compact version of the Megaflo Eco, designed for homes where space for a hot water storage cylinder is limited and where standard size cylinders are unlikely to fit. By being taller and slimmer, the Megaflo Eco Slimline stores the same amount of hot water as an equivalent capacity cylinder and still provides exceptionally high levels of comfort and hot water performance.

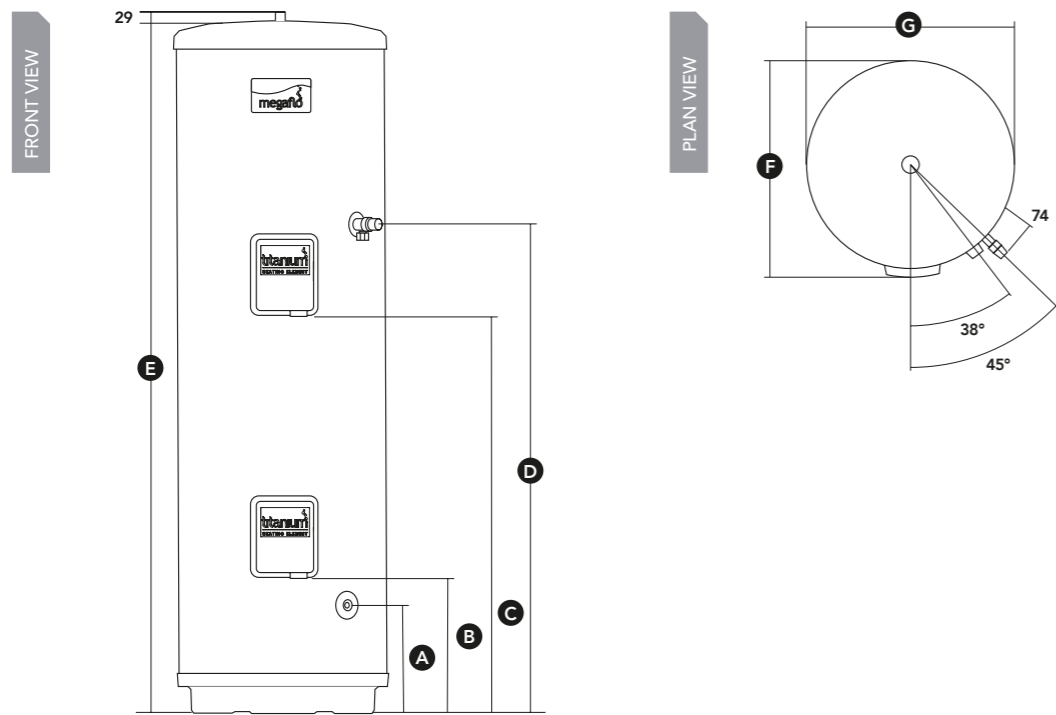
Negating the need for an expansion vessel, the unit fits in the tightest of situations allowing for fast, tidy and compact installations that can be fitted almost anywhere.

### FEATURES

### BENEFITS

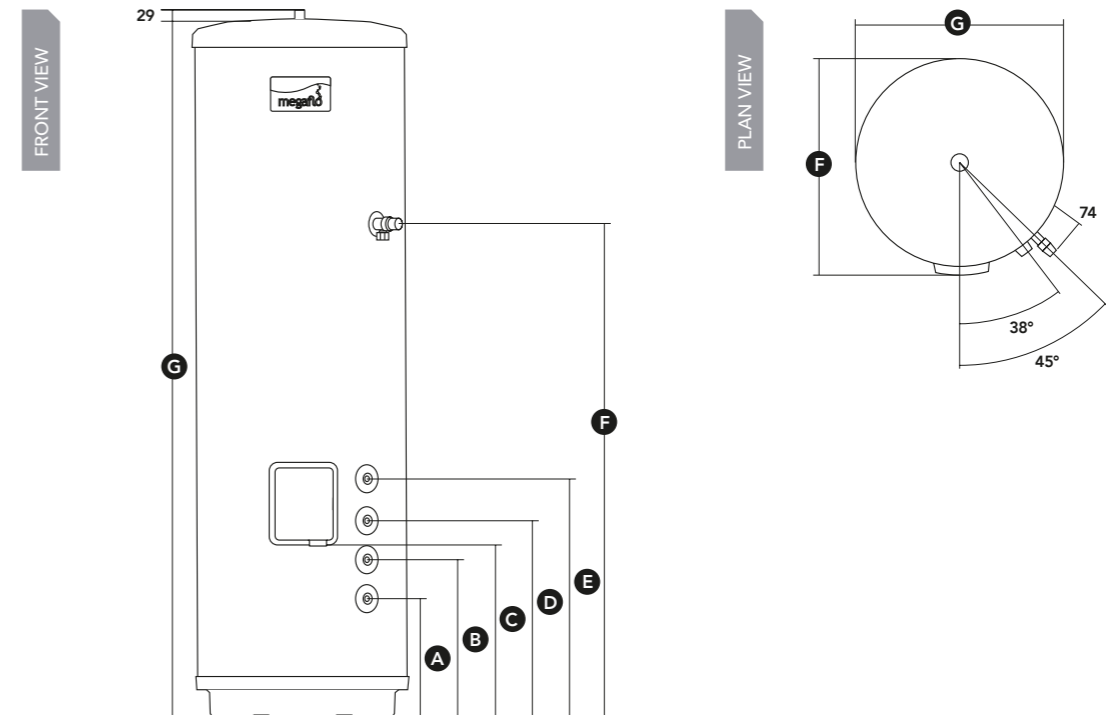
Internal expansion with floating baffle	Saves space and reduces installation time
Slimline cylinder	Smaller footprint fits in tight airing cupboards or through loft hatches
Titanium elements (direct models) Superloy elements (indirect models)	The highest quality elements, specially designed for longer life in even the most aggressive or corrosive water conditions
High performance insulation and insulated T&P valve	Reduces heat loss for better energy efficiency
Megaflo combination valve delivering up to 76 litres per minute at 3 bar pressure	Outstanding performance
High grade duplex stainless steel	High corrosion resistance and a high strength to weight ratio

## Megaflo Eco Slimline Direct



Product	Empty kg	Full kg	Capacity litres	ErP rating	DIMENSIONS							Order code
					A DHW inlet mm	B Cable entry lower mm	C Cable entry upper mm	D T&P relief valve mm	E Height mm	F Depth mm	G Width mm	
D100	27	130	100	B	239	277	-	729	1194	516	491	70:340:82
DD125	33	162	125	C	239	277	795	970	1440	516	491	70:340:83
DD150	37	186	150	C	239	277	932	1123	1622	516	491	70:340:84
DD170	42	218	170	C	239	277	995	1361	1883	516	491	70:340:85
DD200	44	240	200	C	239	277	1289	1535	2079	516	491	70:340:86

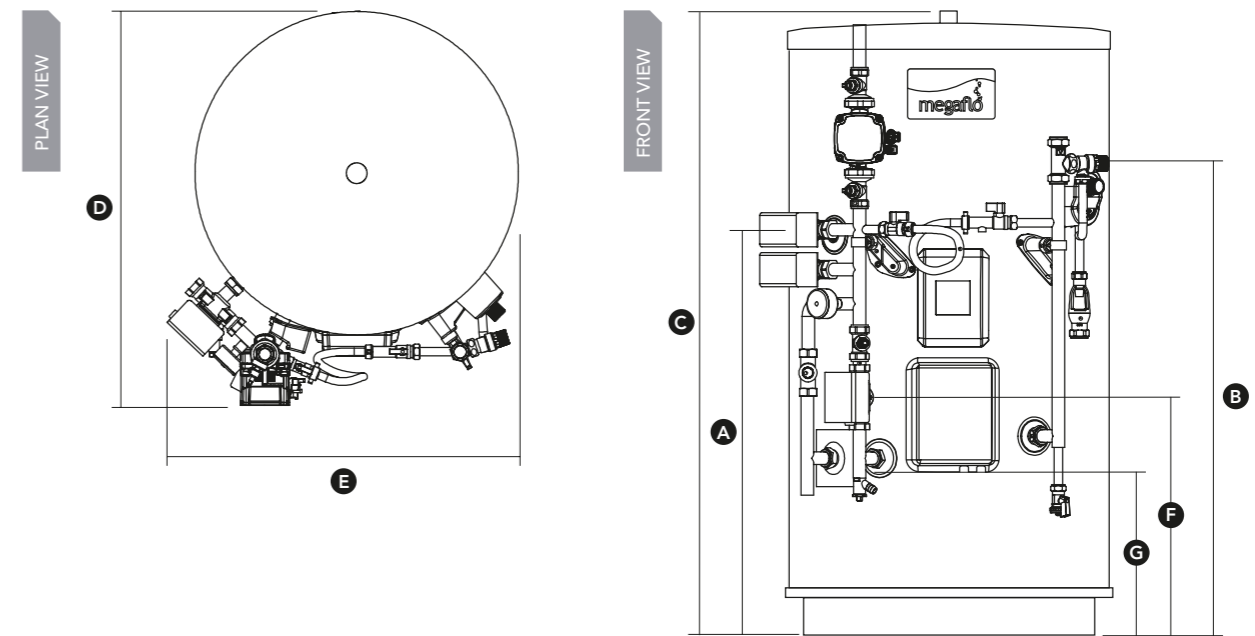
## Megaflo Eco Slimline Indirect



Product	Empty kg	Full kg	Capacity litres	ErP rating	DIMENSIONS							Order code
					A Primary return mm	B Primary flow mm	C Cable entry upper mm	D DHW inlet mm	E Sensor pocket mm	F Depth mm	G Width mm	
100i	31	131	100	B	267	347	367	427	507	600	579	70:340:87
125i	36	162	125	C	267	347	367	427	507	600	579	70:340:88
150i	40	186	150	C	267	347	367	427	507	600	579	70:340:89
170i	45	219	170	C	267	347	367	427	507	600	579	70:340:90
200i	48	243	200	C	267	347	367	427	507	600	579	70:340:91

# Megaflo Eco SystemFit

Megaflo Eco SystemFit goes one step further than our standard Megaflo Eco by adding factory-fitted plumbing and wiring, making it ready for installation with a heat only boiler – not only saving on installation time but also providing a consistently neater appearance.



## FEATURES

Fully plumbed and wired system components

60mm insulation and insulated T&P valve

Manufactured from high grade duplex stainless steel

Delivers up to 76 litres per minute of hot water at 3 bar pressure

High grade duplex stainless steel

## BENEFITS

Neat appearance, saves space and reduces installation time

Improves SAP performance

High corrosion resistance for long life

Outstanding hot water performance without need the need for shower pumps or tanks, even at low pressures

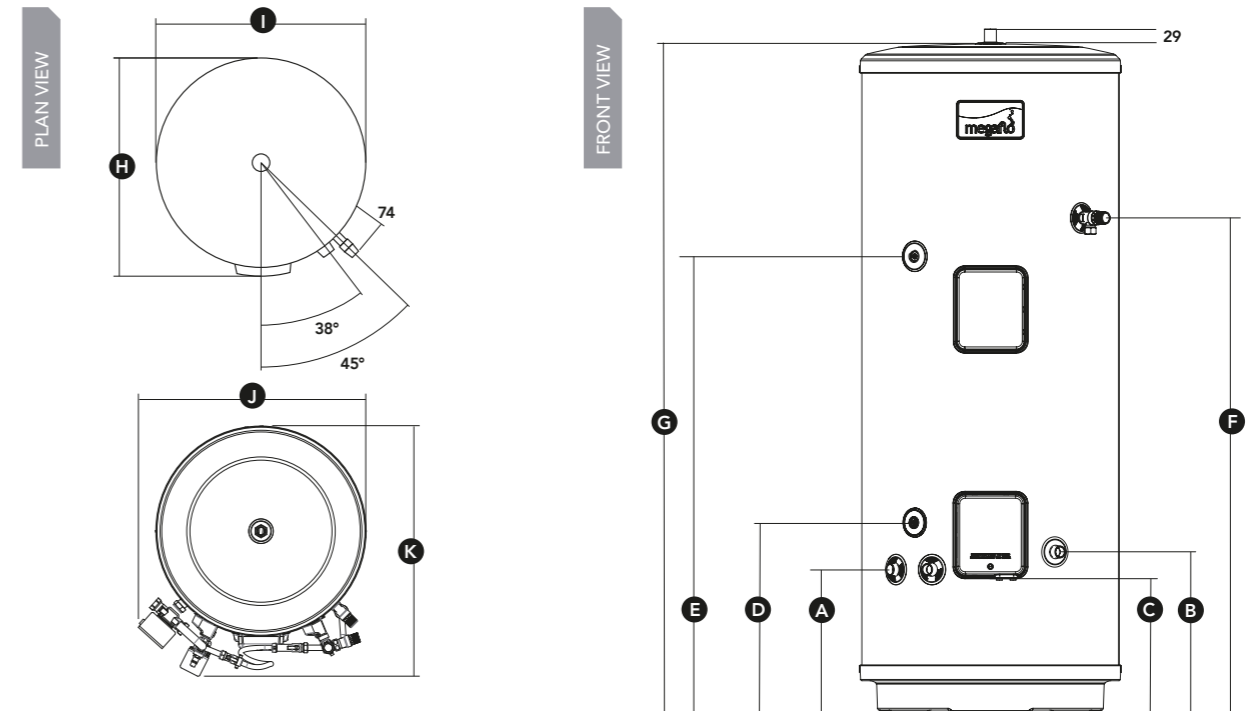
High corrosion resistance for long life

Product	Empty kg	Full kg	Capacity litres	ErP rating	DIMENSIONS							Order code
					A Secondary return mm	B T&P relief valve mm	C Height mm	D Depth mm	E Width mm	F Sensor pocket mm	G Cable entry lower mm	
125sf S22	43	183	125	B	709	794	1102	720	630	410	275	95:050:450
145sf S22	48	203	145	B	810	895	1229	720	630	410	275	95:050:451
170sf S22	52	234	170	B	934	1020	1384	720	630	410	275	95:050:452
210sf S22	55	254	210	B	1011	1095	1486	720	630	410	275	95:050:453
250sf S28	61	297	250	C	1238	1323	1738	720	630	410	275	95:050:454
300sf S28	69	352	300	C	1526	1574	2053	720	630	410	275	95:050:455



# Megaflo Eco SystemReady

With market-leading minimal heat loss figures, heat-up and recovery times, the Megaflo Eco SystemReady provides all the same benefits as our Megaflo Eco SystemFit by adding factory-fitted plumbing and wiring, but is designed to be installed with a system boiler – not only saving on installation time but also providing a consistently neater appearance.



## FEATURES

Fully plumbed and wired system components

60mm insulation and insulated T&P valve

High grade duplex stainless steel

Megaflo Eco delivers up to 76 litres per minute of hot water at 3 bar pressure

## BENEFITS

Neat appearance, space saving, reduces installation time and is compatible with most system boilers

Improves SAP performance

High corrosion resistance for long life

Outstanding hot water performance without the need for shower pumps or tanks, even at low pressures

Product	Empty kg	Full kg	Capacity litres	ErP rating	DIMENSIONS										Order code
					A Primary return	B Cold inlet	C Cable entry lower	D Sensor pocket	E Secondary return	F T&P relief valve	G Height	H Depth	I Width		
125sb	43	180	125	B	316	355	310	410	709	794	1102	710	579	95:050:497	
145sb	48	203	145	B	316	355	310	410	810	895	1229	710	579	95:050:498	
170sb	52	230	170	B	316	355	310	410	934	1020	1384	710	579	95:050:499	
210sb	55	250	210	B	316	355	310	410	1011	1095	1486	710	579	95:050:500	
250sb	61	294	250	C	316	355	310	410	1238	1323	1738	710	579	95:050:501	
300sb	69	352	300	C	316	355	310	410	1526	1574	2053	710	579	95:050:502	

# Megaflo Eco Solar

## DIRECT AND INDIRECT

Megaflo Eco Solar provides an abundance of hot water for fast filling baths and invigorating powerful showers without the need for pumps or tanks, while running costs are kept to a minimum by harnessing the sun's energy when used in conjunction with a solar thermal flat plate collector or evacuated tube package.

Proudly made in the UK from high grade duplex stainless steel and supplied with all necessary valves and expansion vessel to combat even the most aggressive water conditions, Megaflo Eco Solar comes with a lifetime warranty\* for total peace of mind.

\*For domestic installations only



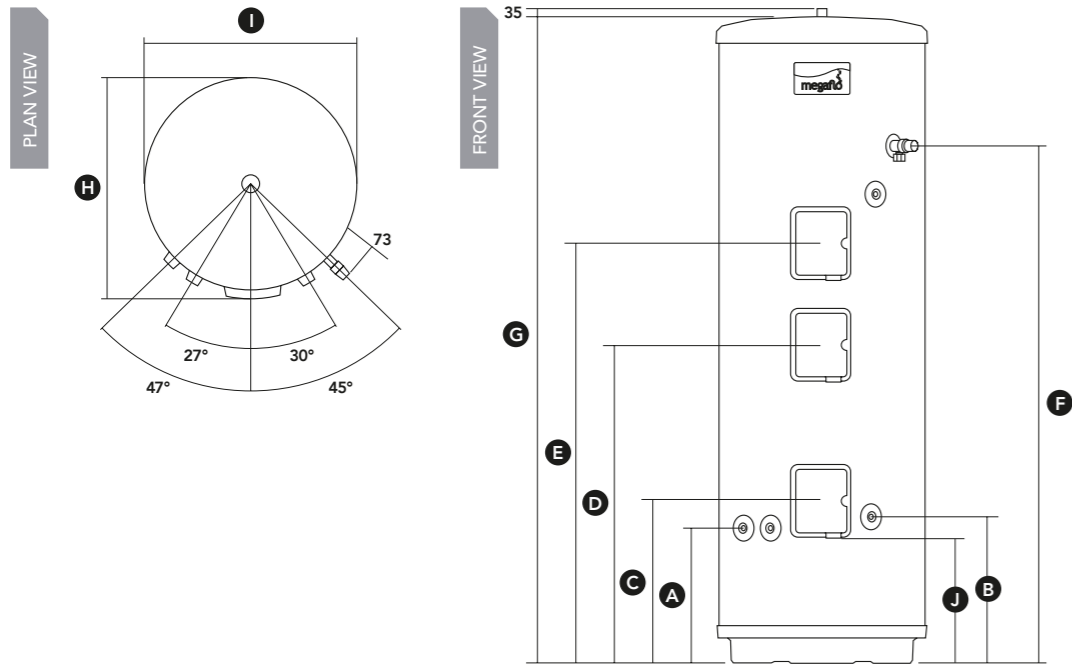
### FEATURES

- 60mm insulation
- Insulated T&P valve
- High grade duplex stainless steel
- Megaflo Eco delivers up to 76 litres per minute of hot water at 3 bar pressure
- Titanium elements (direct models only)
- High performance solar coil

### BENEFITS

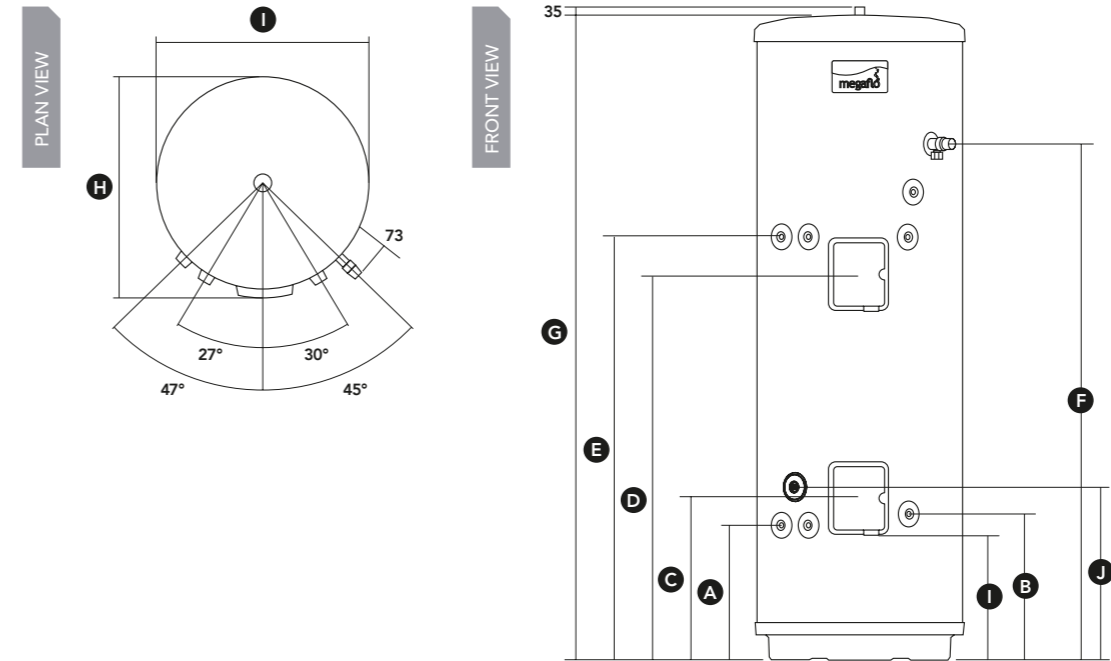
- Best possible heat retention and energy efficiency
- Reduces heat loss for better energy efficiency
- High corrosion resistance and a high strength to weight ratio
- Outstanding hot water performance without the need for shower pumps, even at low pressures
- The highest quality elements, specially designed for longer life in even the most aggressive or corrosive water conditions
- Maximises the heat transfer of harnessed solar energy for rapid heat up and recovery

## Megaflo Eco Solar Direct



Product	Empty kg	Full kg	Capacity litres	ErP rating	DIMENSIONS								Order code	
					A Primary coil connections	B Inlet	C Solar control housing	D Back up element control housing	E Auxiliary element control housing	F T&P valve	G Height	H Depth		I Width
170sd	46.2	215	170	C	373	454	795	794	-	925	1229	600	579	95:050:527
210sdd	52.5	263	210	C	373	454	932	829	1103	1184	1489	600	579	95:050:512
260sdd	60.7	320	260	C	373	454	995	888	1167	1441	1802	600	579	95:050:528
300sdd	65.3	368	300	C	373	454	1289	983	1444	1693	2053	600	579	95:050:516

## Megaflo Eco Solar Indirect



Product	Empty kg	Full kg	Capacity litres	ErP rating	DIMENSIONS										Order code
					A Primary coil connections	B Inlet	C Solar control housing	D Back up element control housing	E Secondary coil connections	F T&P valve	G Height	H Depth	I Width	J Sensor pocket	
190si	57.3	246	190	C	373	454	795	814	925	925	1229	600	579	410	95:050:511
210si	59.9	266	210	C	373	454	932	949	1095	1184	1489	600	579	410	95:050:513
250si	69.1	312	250	C	373	454	995	1068	1258	1441	1802	600	579	410	95:050:515
300si	75.4	369	300	C	373	454	1289	1255	1573	1693	2053	600	579	410	95:050:517



# Megaflo Eco Solar PV Ready

## DIRECT AND INDIRECT

The Megaflo Eco Solar PV Ready takes the energy harvested by PV panels on the roof and transfers it directly to the cylinder delivering free hot water. Our range is supplied with all necessary valves and internal expansion for ease of installation.

Operating on any PV array, with the panels wired straight into the cylinder, it requires no roof work or additional training to install<sup>†</sup> and the pre-wired controller makes installation quick and simple.

<sup>†</sup>No training in addition to Hot Water Unvented Storage Systems (G3) is required.

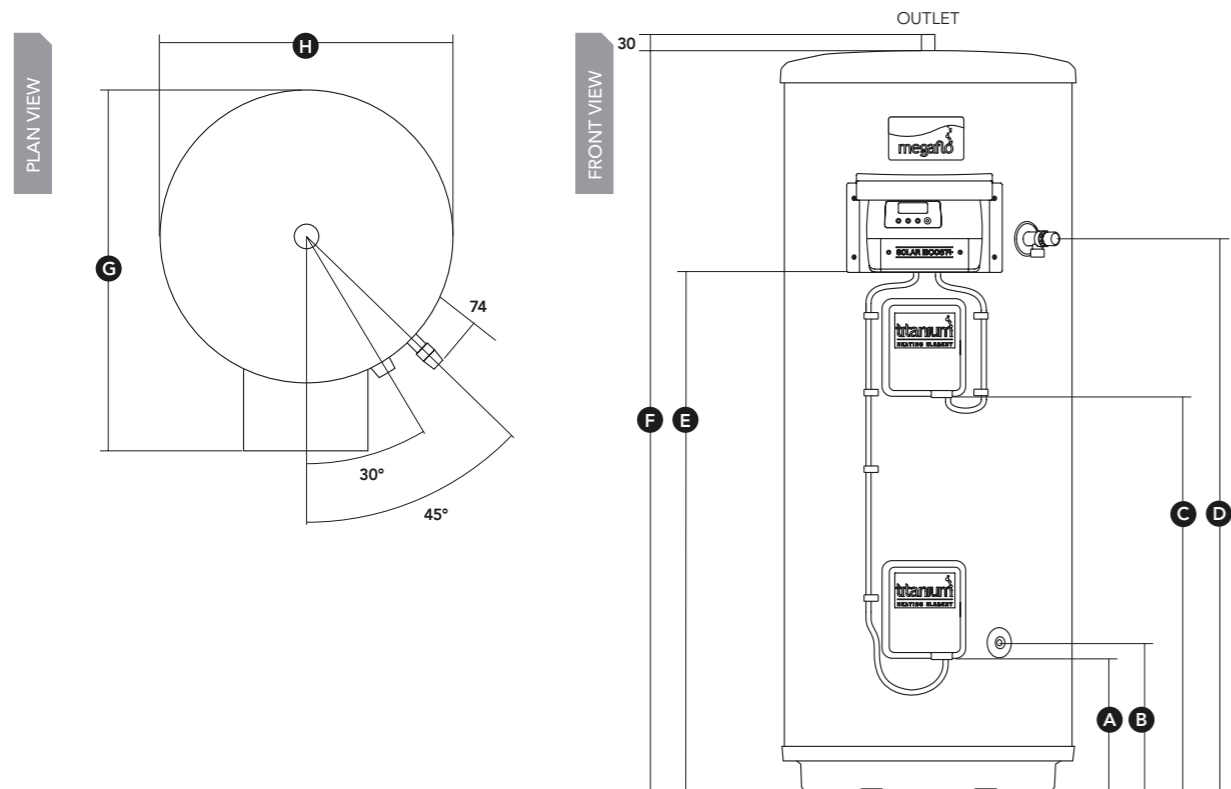
### FEATURES

- Fully wired Solar iBoost control
- Wireless communication
- High grade duplex stainless steel
- High performance insulation
- Internal floating baffle
- Megaflo combination valve delivering up to 72 litres per minute at 3 bar pressure

### BENEFITS

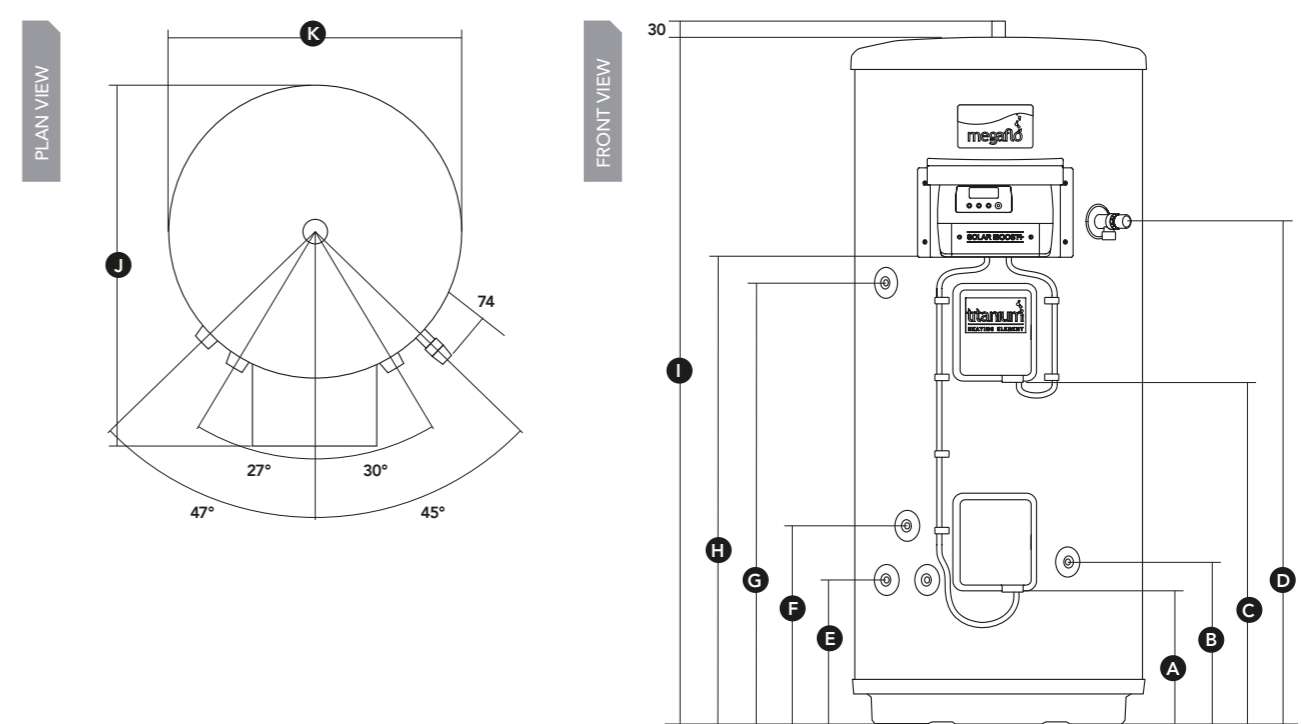
- No special wiring required, easy to install
- For ease of siting
- High corrosion resistance and a high strength to weight ratio
- Reduces heat loss for better energy efficiency
- Provides faster installation and takes up less space
- Outstanding performance

## Megaflo Eco Solar PV Ready Direct



Product	Empty kg	Full kg	Capacity litres	ErP rating	DIMENSIONS								Order code
					A Cable entry lower mm	B DHW Inlet mm	C Heater 1 control mm	D T&P relief valve mm	E Solar PV Control mm	F Height mm	G Depth mm	H Width mm	
210d	44	243	210	C	275	307	801	1095	1052	1485	714	579	95:050:354
250d	49	285	250	C	275	307	1008	1322	744	1736	714	579	95:050:355
300d	57	340	300	C	275	307	1312	1574	744	2051	714	579	95:050:356

## Megaflo Eco Solar PV Ready Indirect



Product	Empty kg	Full kg	Capacity litres	ErP rating	DIMENSIONS											Order code
					A Cable entry lower mm	B DHW inlet mm	C Heater 1 control mm	D T&P relief valve mm	E Primary coil connections mm	F Boiler thermostat pocket mm	G Secondary return mm	H Solar PV control mm	I Height mm	J Depth mm	K Width mm	
170i	42	220	170	B	290	355	703	1020	316	424	935	950	1383	714	579	95:050:350
210i	48	243	210	B	290	355	796	1096	316	424	1011	1052	1485	714	579	95:050:351
250i	54	287	250	C	290	355	1008	1323	316	424	1238	744	1736	714	579	95:050:352
300i	62	345	300	C	290	355	1312	1574	316	424	1526	744	2051	714	579	95:050:353

# Megaflo Eco Plus

## DIRECT AND INDIRECT

Megaflo Eco Plus delivers significantly higher performance levels for more demanding applications. Available in a range of capacities from 250 to 1000 litres, Megaflo Eco Plus delivers outstanding high flow rates of up to 176 litres per minute.

Every Megaflo Eco Plus has either an extra large surface area indirect heating coil or electric heating elements to ensure rapid heat recovery times for continuous performance during periods of high demand and is supplied with all necessary valves and expansion vessel.



### FEATURES

### BENEFITS

Unique 'L' shaped immersion heater (250/300 litre models only)

Maximises the volume of hot water available when heated electrically

Large bore tappings and low resistance safety valves

Outstanding flow rates

60mm / 100mm of CFC / HCFC free injected foam (depending on model size)

Provides the best possible heat retention and energy efficiency

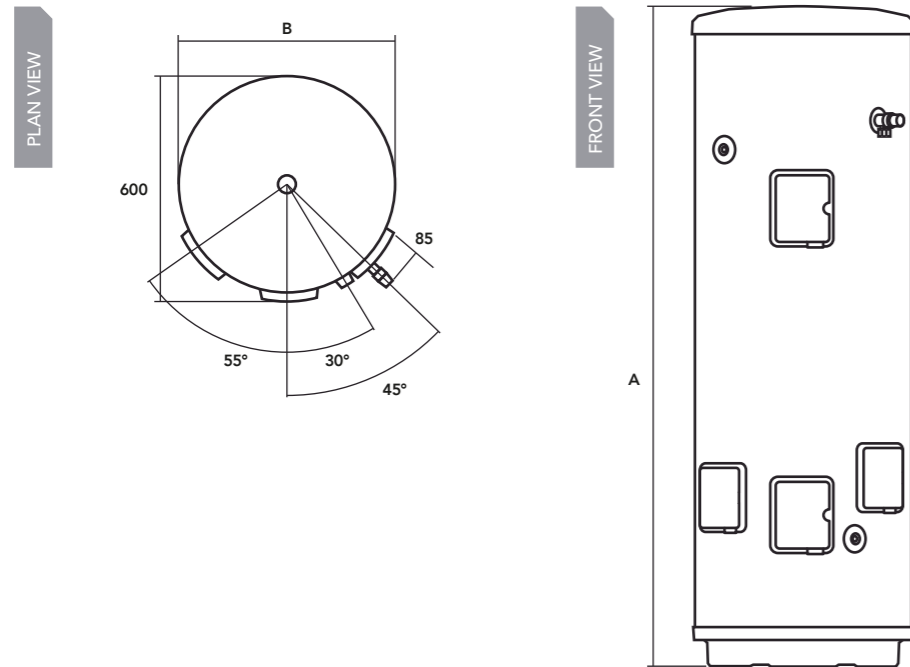
Extra large high performance coil heat exchanger

Rapid heat recovery times

High grade duplex stainless steel

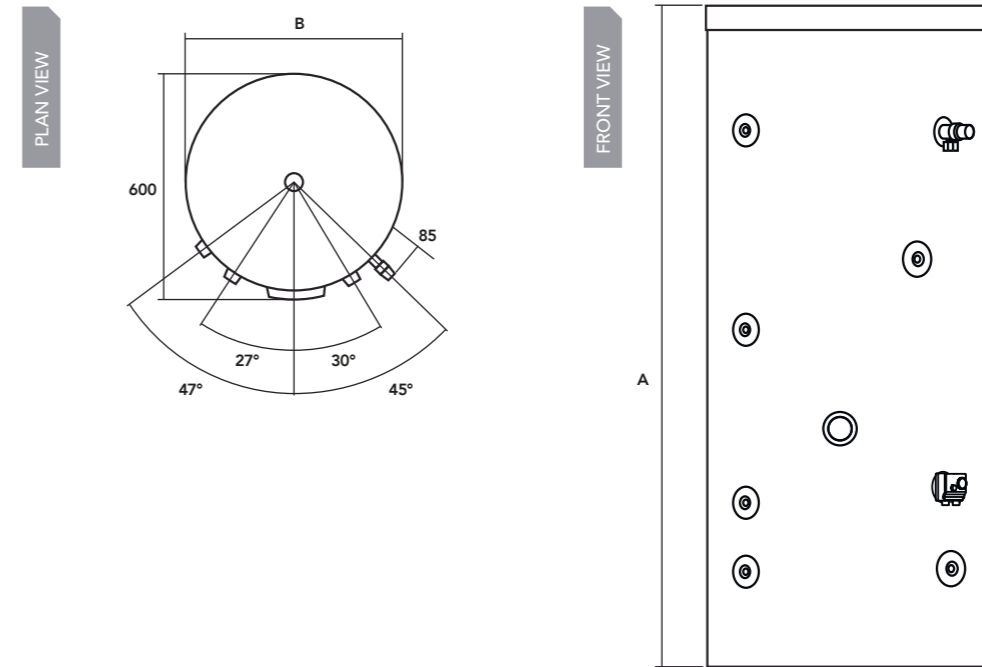
High corrosion resistance and a high strength to weight ratio

## Megaflo Eco Plus Direct



Product	Empty kg	Full kg	Capacity litres	ErP rating	DIMENSIONS		Order code
					A Height mm	B Width mm	
250ddd	50	300	250	C	1737	579	95:050:700
300ddd	57	357	300	C	2052	579	95:050:701

## Megaflo Eco Plus Indirect

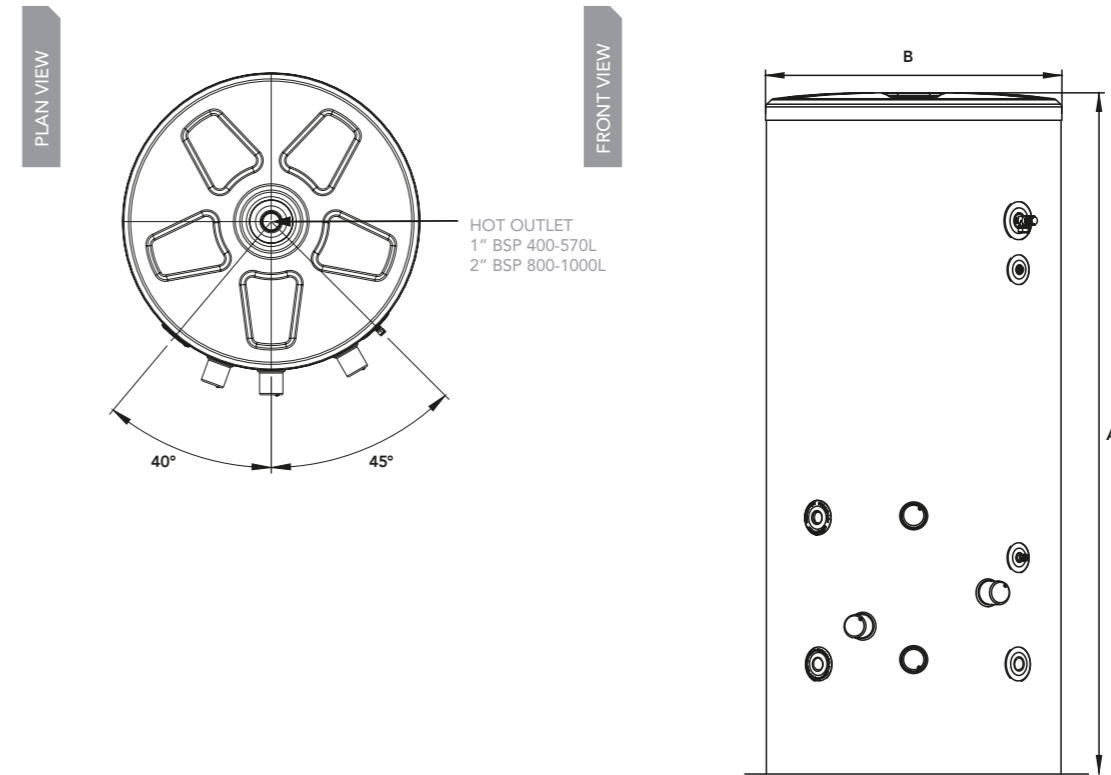


Product	Empty kg	Full kg	Capacity litres	ErP rating	DIMENSIONS		Order code
					A Height mm	B Width mm	
250i	59	309	250	C	1737	579	95:050:710
300i	66	366	300	C	2052	579	95:050:711
400i	95	495	400	B	1502	861	95:050:712
500i	110	610	500	C	1802	861	95:050:713
570i	115	685	570	C	1977	861	95:050:714
800i	211	1011	800	C	1914	211	95:050:721
1000i	219	1219	1000	C	2327	219	95:050:722

# Megaflo Eco Plus Flexistor

The new Flexistor cylinders can be used in a whole host of applications – including installations requiring buffer vessels. This flexibility will also allow the specifier or installer to choose a new Flexistor unvented kit to match their requirements if necessary.

As well as bosses to accommodate immersion heaters, the all new Flexistor cylinders are fitted with flow and return connections to facilitate various heat sources, such as a heat pump via a plate to plate heat exchanger.



## FEATURES

400 - 1000 litre capacities available

100mm of CFC / HCFC-free injected foam

High performance coil heat exchanger

3.5 bar operating pressure

Manufactured from marine grade 2205 duplex stainless steel

Unprecedented 30 year warranty in commercial applications

## BENEFITS

Ideal for large residential and commercial applications

Optimum heat retention and energy efficiency

Rapid heat recovery times

High performance delivery of hot water

For longer life and corrosion resistance in the commercial environment

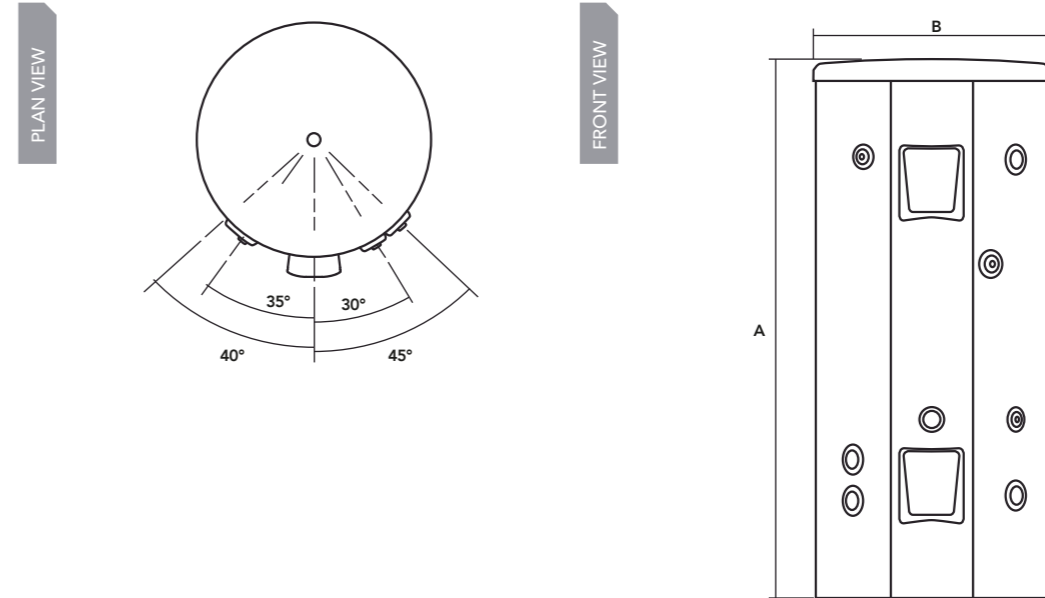
Installer and end user peace of mind

Product	Empty	Full	Capacity	ErP rating	DIMENSIONS		Order code
					A	B	
	kg	kg	litres		Height	Width	
					mm	mm	
400	81	481	400	B	1533	872	7038361
500	88	588	500	C	1817	872	7038362
570	92	662	570	C	2012	872	7038363
800	155	955	800	C	1502	1024	7038364
1000	215	1215	1000	C	1897	1024	7038365



# Megaflo Commercial

Designed for instances of continuous or substantial demand such as hotels, leisure centres, office blocks and shopping malls, when there's often a need for lots of hot water very quickly, without loss in performance. Megaflo Commercial cylinders provide large scale, commercial capacity and fast flow rates to satisfy even the highest demands. Supplied with all necessary valves and expansion vessel.



## FEATURES

True operating pressures of 6 and 10 bar

Legionella protection

High technology super performance coils or choice of electric elements up to 90kW

Available in Indirect, Flexistor, Solar & Buffer models

Unprecedented 30 year warranty in commercial applications

## BENEFITS

Negates the need for pressure breaks, delivers high performance and peace of mind

Meets the recommendations of HSE document L8 and aids compliance of HTM04-01 with up to two inspection ports as standard and optional stratification loop kit. Designed to ensure no deadlegs

Industry leading heat recovery times all the way up to 2,500 litres

Caters for a wider range of requirements

Installer and end user peace of mind

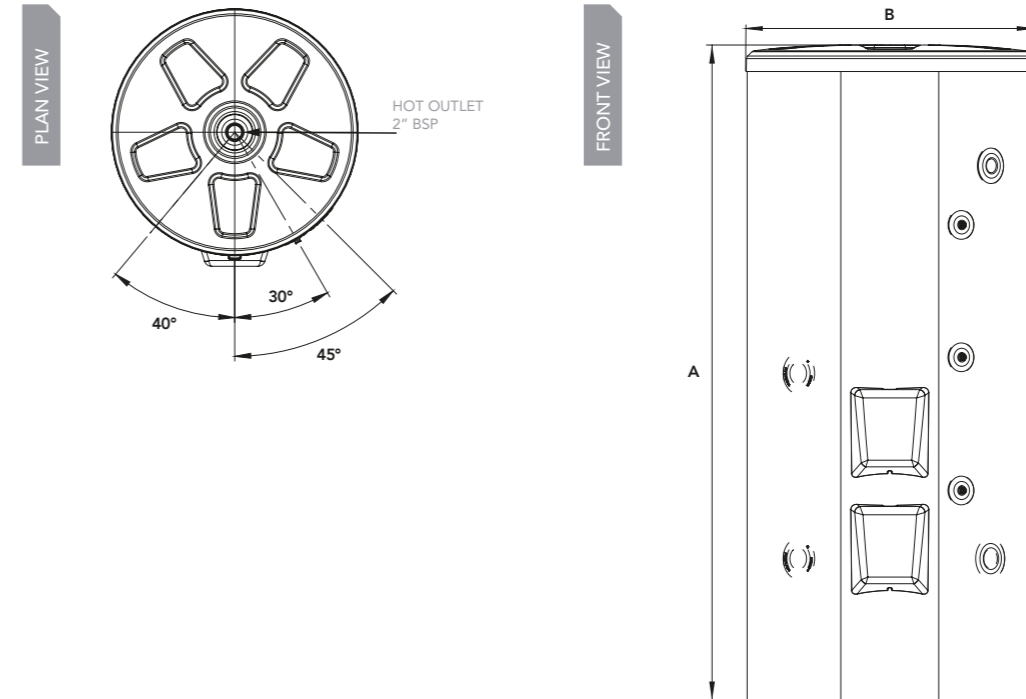
Product	Bar	Empty kg	Full kg	Capacity litres	ErP rating	DIMENSIONS		Order code
						A	B	
						Height mm	Width mm	
400i	6	105	505	400	B	1535	872	95:050:540
500i	6	110	610	500	C	1804	872	95:050:541
800i	6	164	964	800	C	1906	1024	95:050:542
1000i	6	188	1188	1000	C	2301	1024	95:050:543
1250i	6	319	1569	1250	C	1936	1224	95:050:544
1450i	6	322	1872	1450	C	2253	1224	95:050:545
2000i	6	445	2445	2000	C	2014	1470	95:050:547
2500i	6	450	2950	2500	**	2419	1470	95:050:549
400i	10	105	505	400	B	1535	872	95:050:570
500i	10	110	610	500	C	1804	872	95:050:571
800i	10	164	964	800	C	1906	1024	95:050:572
1000i	10	188	1188	1000	C	2301	1024	95:050:573
1250i	10	319	1569	1250	C	1936	1224	95:050:574
1450i	10	322	1872	1450	C	2253	1224	95:050:575
2000i	10	445	2445	2000	C	2014	1470	95:050:577
2500i	10	450	2950	2500	**	2419	1470	95:050:579

\*\*ErP is only applicable up to 2000 litres.

# Megaflo Commercial Flexistor

The new Flexistor cylinders can be used across a range of installations – including those requiring buffer vessels. This flexibility will also allow the specifier or installer to choose a new Flexistor unvented kit to match their requirements if necessary.

As well as bosses to accommodate immersion heaters, the all new Flexistor cylinders are fitted with flow and return connections to facilitate various heat sources, such as a heat pump via a plate to plate heat exchanger.



## FEATURES

400 - 2500 litre capacities available

100mm of CFC / HCFC-free injected foam

Wide choice of auxiliary elements from 6 - 54kW, providing up to 90kW of heating load

Manufactured from marine grade 2205 duplex stainless steel

Unprecedented 30 year warranty in commercial applications

## BENEFITS

Ideal for large residential and commercial applications

Optimum heat retention and energy efficiency

Appropriate to the installation

For longer life and corrosion resistance in the commercial environment

Installer and end user peace of mind

Product	Empty kg	Full kg	Capacity litres	ErP rating	DIMENSIONS		Order code
					A Height mm	B Width mm	
400	99	499	400	B	1535	872	7038353
500	100	600	500	C	1804	872	7038354
800	160	960	800	C	1906	1024	7038355
1000	180	1180	1000	C	2301	1024	7038356
1250	297	1547	1250	C	1936	1224	7038357
1450	304	1754	1450	C	2253	1224	7038358
2000	415	2415	2000	C	2014	1470	7038359
2500	421	2921	2500	**	2419	1470	7038360
400	99	499	400	B	1535	872	7038513
500	100	600	500	C	1804	872	7038514
800	160	960	800	C	1906	1024	7038515
1000	180	1180	1000	C	2301	1024	7038516
1250	297	1547	1250	C	1936	1224	7038517
1450	304	1754	1450	C	2253	1224	7038518
2000	415	2415	2000	C	2014	1470	7038519
2500	421	2921	2500	**	2419	1470	7038520

\*\*ErP is only applicable up to 2000litres.

## Customer Support (up to 400 litres)

Baxi Customer Support are here to provide support for the lifetime of your Megaflo cylinder. Our customer contact centre is based in Warwick and we have a dedicated and skilled team on hand to help you.

Call us on 0344 871 1535 for any after sales enquiries.

Our opening times are:

Monday to Friday: 8am to 8pm

Saturday/Sunday: 8.30am to 2pm

Bank Holidays including Christmas and New Year: 8.30 to 2pm

Our nationwide network of highly skilled engineers are fully trained to service and repair our Megaflo cylinders. Their vans are well stocked with genuine parts, which are tested and approved for use in Megaflo cylinders, to ensure quality, reliability and safety. Our engineers are backed by our award-winning customer support centre. Our dedicated and skilled team is on hand to help you, 365 days a year.

## Customer Support (over 400 litres)

In the unfortunate event that you require an in warranty service call, simply phone our After Sales team on 0345 070 1058.

Not sure if your product is in-warranty? Contact our team with your product's serial number and we will be able to advise you.

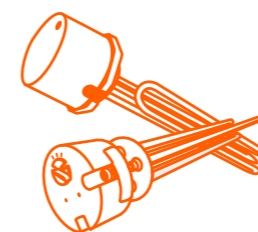
## Genuine parts

Our specialist partner company, Baxi Genuine Parts, provide spares and replacements for Megaflo products.

This includes:

- Approved parts for Megaflo products
- Guaranteed quality, safety and reliability
- Nationwide network of approved stockists
- Lifetime support for Megaflo products

Call our knowledgeable and helpful team on 0344 871 1540.



## Find an installer

Find an Installer is a tool hosted on the Baxi website that helps our installers to gain extra work.

To take advantage of this great benefit, please join Baxi Works, <https://www.baxiworks.co.uk> and add your business details, including your G3 qualifications.

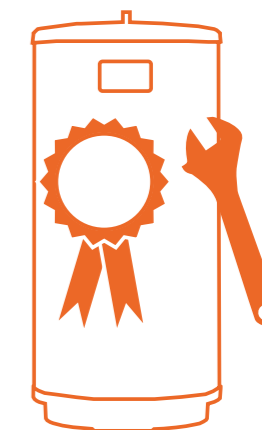
Then select that you would like to appear on Find an Installer, and consumers searching for a Megaflo Installer in your local area will automatically be provided with your contact details.

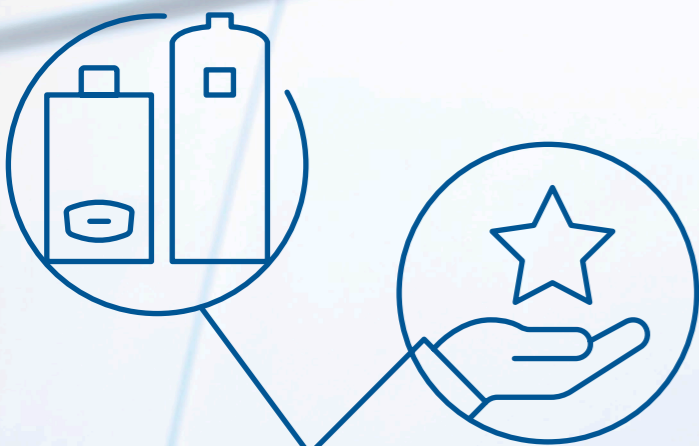


## Free training

Do you need to get qualified or renew your G3 qualification to install unvented cylinders? Get in touch with our Baxi training team!

To book your training visit <https://www.baxi.co.uk/trade/training-courses> or call us on 0344 335 4207.





Join the installer loyalty scheme that really

# WORKS FOR YOU



Earn reward points for eligible product registrations



Receive automated service reminders and expert advice



Access the Baxi Toolbelt app for Gas Safe registered installers



Appear on the Baxi Find an Installer listing



Earn points for cylinders (even if you're not Gas Safe registered)



Enjoy the premium benefits of being a Baxi Approved Installer, when you register at least 20 eligible products a year



Get priority engineer call-outs

*Sign up  
today* →

[baxiworks.co.uk](https://baxiworks.co.uk)

**megaflo**

BY HEATRAESADIA

Cylinders After Sales Service

0344 871 1535

[www.heatraesadia.com](http://www.heatraesadia.com)

Please follow us online:



The Obvious Choice.



Please recycle this product once you have finished with it

Megaflo may introduce modifications to their products from time to time. Consequentially the details given in this data sheet are subject to alteration without notice.

