



PRODUCT HANDBOOK

July 2022

RAINWATER



PLUMBING



UNDERGROUND



hunterplastics.co.uk

CUSTOMER INFORMATION

PRODUCT INFORMATION

Special lengths

A 5% surcharge will be applied to special lengths of extruded product. Over 250 quality lengths to pro rata price will be charged. (Minimum length 1 metre).

When ordering, please state colour, code & quantity. E.g:

COLOUR	CODE	QUANTITY
B (BLACK)	R10	200

PRODUCT PHOTOGRAPHY

Photographs are for representation only and may vary to the actual product. Colours are a guide only.

TRADEMARKS

The following are registered trademarks of Hunter Plastics:

-  Hunter
- JOBS A GOOD'UN
- Foundry Finish
- Regency
- Surefit
- Highflo
- Squareflo

The following are registered trademarks of Multikwik:

-  Multikwik
- Kwiknut
- Multiflex
- Multistop

DELIVERY AND COLLECTION

Minimum Order Values

For carriage paid minimum order values, please refer to your Customer Supply Agreement.

QUALITY

Quality is one of our core principles:

- Products made with care under ISO9001 & ISO14001 certified system.
- Hunter Plastics products hold many 3rd party approvals, where appropriate these are detailed in the product listing.
- As part of our ongoing quality improvement processes, we reserve the right to alter our products & ranges without notice.

CONDITIONS

All goods are sold according to Aliaxis UK Ltd standard conditions of sale which are available on request.

We make every effort to maintain or reduce costs that are under our control, however fluctuating raw materials and fuel prices have a dramatic effect on our manufacturing costs. We aim to provide you reasonable notice when we implement a price increase, but reserve the right to change prices without prior notice.

© Aliaxis UK Ltd 2022,
All Rights Reserved, E&OE



RAINWATER SYSTEMS

	Page		Page
For average UK roof sizes	05	For flat roofs	40
For large UK roof sizes	15	Ease of Installation	41
Cast Iron Effect	23	Special Fabrications	43
For super UK roof sizes	28	Installing a Rainwater System.....	44
Brackets & Ancillaries	37	Rainwater Calculations	45
Innovations	39		



SOIL & WASTE SYSTEMS

	Page		Page
Pushfit & Solvent Soil	49	Compression waste	85
WC Connectors	61	Traps	89
Cast Iron Effect	71	Floor Drainage	98
Waste	73	Grease Management	101
Overflow	81		

SALES HOTLINE: 0330 111 4233



UNDERGROUND SYSTEMS

	Page		Page
110mm/ 160mm/ 200mm Drainage Systems		Flowloc System	120
Inspection Chambers	105	Quantum Drainage System	123



AUTOMATE YOUR FUTURE RAINWATER ORDERS, WITH THE HUNTER ESTIMATING TOOL



SCAN QR TO VISIT



RAINWATER SYSTEMS

For average UK roof sizes...

Half Round
There's two - Standard & Mini
Flow Rate Up to 2.6l/s



p5

Squareflo
The 'Box' One
Flow Rate Up to 3.8l/s



p11

For large UK roof sizes...

125
A Deeper Profile
Flow Rate Up to 4.9l/s



p15

Regency
For Style & Volume
Flow Rate Up to 4.7l/s



p19

Cast Iron Effect...

Foundry Finish
A Cast Iron look without the expense
p23



For super UK roof sizes...

Highflo
For Great Volumes
Flow Rate Up to 6.0l/s



p29

Stormflo
The Big One
Flow Rate Up to 14.0l/s



p33

For flat roofs...

Roof Outlets
For Flat Roofs
p40



To help get the job done...

Brackets & Ancillaries
p37



Innovations
p39



Ease of Installation
p41



HALF ROUND

A Standard Profile

112mm SUREFIT
GUTTER SYSTEM

Packed with more benefits than you can imagine. With a flow rate of up to 2.6l/s it's GOOD for average UK roof sizes.



AVAILABLE IN
FOUNDRY
FINISH®



GUTTER



	Code	Pack
2 metre	GR511	10
	BR511	10
	VR511	10
	WR511	10
4 metre	GR512	5
	BR512	5
	VR512	5
	WR512	5
5 metre	BR552	5

SUPPORT BRACKET

1 screw fixing

Fix at 1m centres - max

Code	Pack
GR010	20
BR010	20
VR010	20
WR010	20

SUPPORT BRACKET

2 screw fixing

Fix at 1m centres - max

Code	Pack
GR025	20
BR025	20
VR025	20
WR025	20

RUNNING OUTLET

Code	Pack
GR011	5
BR011	5
VR011	5
WR011	5

STOPEND OUTLET

Code	Pack
GR012	5
BR012	5
VR012	5
WR012	5

UNION

Code	Pack
GR398	10
BR398	10
VR398	10
WR398	10

JOINT BRACKET

Code	Pack
GR008	10
BR008	10
VR008	10
WR008	10

EXTERNAL STOPEND

Code	Pack
GR013	10
BR013	10
VR013	10
WR013	10

90° ANGLE

See page 43 for special fabrications.

Code	Pack
GR005	5
BR005	5
VR005	5
WR005	5

120° ANGLE

Code	Pack
BR006	5
VR006	5
WR006	5

135° ANGLE

Code	Pack
GR007	5
BR007	5
VR007	5
WR007	5

CONNECTION TO CAST IRON

Code	Pack	
HR/CI Gutter	BR459	1
HR/CI Gutter	WR459	1
HR/ogee - RH	BR461	1
HR/ogee - LH	BR462	1

GUTTER LEAF GUARD

For 112mm Half Round and Squareflo

Code	Pack	
Guard	R500	1
Clip	RG1X	18

5 metre pack (10 x 500mm).

GOOD TO KNOW

ACCESSORIES/SPARES AVAILABLE

Rise & Fall Brackets p37
Spare Seals p38

Each product code is prefixed with a colour.
Example BR125, where 'B' = BLACK

HALF ROUND

68mm PIPES AND FITTINGS

68mm

DOWNPIPE



	Code	Pack
2 metre	BR518	5
2.5 metre	GR519	5
	BR519	5
	VR519	5
	WR519	5
4 metre	GR520	5
	BR520	5
	VR520	5
	WR520	5
5.5 metre	GR521	5
	BR521	5
	VR521	5
	WR521	5

CONNECTOR



Code	Pack
GR017	10
BR017	10
VR017	10
WR017	10

112½° BRANCH



Code	Pack
GR022	5
BR022	5
VR022	5
WR022	5

ADJUSTABLE OFFSET



Min: 22mm Max: 80mm.

Code	Pack
BR024	5
VR024	5
WR024	5

ACCESS PIPE



Code	Pack
GR001	1
BR001	1
VR001	1
WR001	1

SQUARE/ROUND ADAPTOR



Code	Pack
BR397	5
VR397	5
WR397	5

BRACKET



Fix at 2m centres - max

Code	Pack
GR019	10
BR019	10
VR019	10
WR019	10

BRACKET



Fix at 2m centres - max

Code	Pack
GR046	10
BR046	10
VR046	10
WR046	10

REDUCER



Converts a 110mm socket to a 68mm socket. To connect downpipe to below ground drainage.

Code	Pack
BR768	10

REDUCER



82mm Spigot to 68mm Socket.

Code	Pack
GR004	5

REDUCER



110mm Socket to 68mm Socket.

Code	Pack
BR003	5

92½° BEND



Code	Pack
GR577	10
BR577	10
VR577	10
WR577	10

112½° OFFSET BEND



Code	Pack
GR020	10
BR020	10
VR020	10
WR020	10

SHOE



Code	Pack
GR021	10
BR021	10
VR021	10
WR021	10

HOPPER HEAD



W= 254mm H=230mm D=150mm

Code	Pack
GR014	1
BR014	1
VR014	1
WR014	1

DRAIN CONNECTOR



External use only

Code Pack

DS024	1
-------	---

Flexible for 50, 65 and 68mm.

GOOD TO KNOW

Want an easy installation?
Check out our ADJUSTABLE OFFSET
and QUICK FIX CLIPS p41



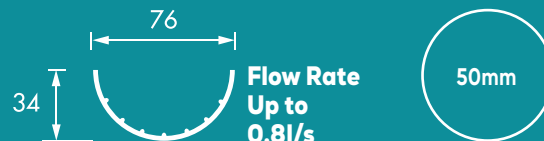
Each product code is prefixed with a colour.

Example BR125, where 'B' = BLACK

HALF ROUND

**76mm
GUTTER SYSTEM**

**50mm PIPES
AND FITTINGS**



GUTTER



	Code	Pack
2 metre	GR513	10
	BR513	10
	VR513	10
	WR513	10

JOINT BRACKET



	Code	Pack
	GR037	10
	BR037	10
	VR037	10
	WR037	10

SUPPORT BRACKET



1 screw fixing

Fix at 1m centres - max

	Code	Pack
	GR036	20
	BR036	20
	VR036	20
	WR036	20

DOWNPIPE



	Code	Pack
2 metre	GR522	10
	BR522	10
	VR522	10
	WR522	10

BRACKET



1 screw fixing

Fix at 2m centres - max

	Code	Pack
	GR039	10
	BR039	10
	VR039	10
	WR039	10

112½° OFFSET BEND



	Code	Pack
	GR040	10
	BR040	10
	VR040	10
	WR040	10

90° ANGLE

See page 43 for special fabrications.



	Code	Pack
	GR029	5
	BR029	5
	VR029	5
	WR029	5

135° ANGLE



	Code	Pack
	GR031	5
	BR031	5
	VR031	5

EXTERNAL STOPEND



	Code	Pack
	GR034	10
	BR034	10
	VR034	10
	WR034	10

DRAIN LEAF GUARD



Covers drains 300mm wide x 265mm

	Code	Pack
	DS500	15

Accepts downpipe up to 110mm.

CONNECTOR



	Code	Pack
	GR038	5
	BR038	5
	VR038	5
	WR038	5

SHOE



	Code	Pack
	GR041	5
	BR041	5
	VR041	5
	WR041	5

RUNNING OUTLET



	Code	Pack
	GR032	5
	BR032	5
	VR032	5
	WR032	5

STOPEND OUTLET



	Code	Pack
	GR033	5
	BR033	5
	VR033	5

GOOD TO KNOW

ACCESSORIES AVAILABLE
Lubricants p38
Silicone Spray p38



Each product code is prefixed with a colour.
Example BR125, where 'B' = BLACK

REDUCER



68mm Spigot to 50mm Spigot.

	Code	Pack
	GR666	5
	BR666	5
	WR666	5

REDUCER



110mm Spigot x 50mm Socket.

	Code	Pack
	GS264	1
	WS264	1

GOOD TO KNOW

NEED A HOPPER?
Use a R014 112mm Hopper with the R666 Reducer p8



Each product code is prefixed with a colour.
Example BR125, where 'B' = BLACK

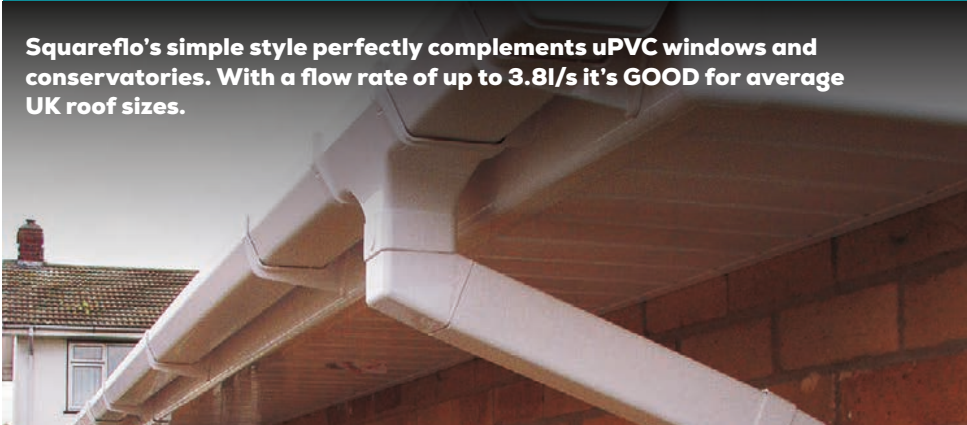
The 'Box' One

SQUAREFLO

114mm SUREFIT GUTTER SYSTEM



Squareflo's simple style perfectly complements uPVC windows and conservatories. With a flow rate of up to 3.8l/s it's GOOD for average UK roof sizes.



GUTTER



	Code	Pack
2 metre	BR516	10
	VR516	10
	WR516	10
4 metre	BR517	5
	VR517	5
	WR517	5
5 metre	WR557	5

SUPPORT BRACKET

1 screw fixing



Fix at 1m centres - max

Code	Pack
BR378	10
VR378	10
WR378	10

SUPPORT BRACKET

2 screw fixing



Fix at 1m centres - max

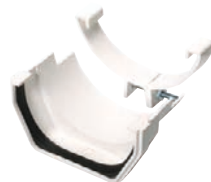
Code	Pack
BR395	20
VR395	20
WR395	20

JOINT BRACKET



Code	Pack
BR379	10
VR379	10
WR379	10

CONNECTOR TO HR/CI



Code	Pack
BR387	5
VR387	5
WR387	5

RUNNING OUTLET



Code	Pack
BR376	5
VR376	5
WR376	5

STOPEND OUTLET



Code	Pack
BR394	5
VR394	5
WR394	5

EXTERNAL STOPEND



Code	Pack
BR380	10
VR380	10
WR380	10

INTERNAL STOPEND



Only suitable for fittings with seals.

Code	Pack
BR381	5
VR381	5
WR381	5

90° ANGLE

See page 43 for special fabrications.



Code	Pack
BR383	5
VR383	5
WR383	5

120° ANGLE



Code	Pack
BR374	5
VR374	5
WR374	5

135° ANGLE



Code	Pack
BR375	5
VR375	5
WR375	5

150° ANGLE



Code	Pack
VR370	5
WR370	5

GOOD TO KNOW

ACCESSORIES/SPARES AVAILABLE
 Rise & Fall Brackets p37
 Spare Seals p38



Each product code is prefixed with a colour.

Example BR125, where 'B' = BLACK

SQUAREFLO

65mm PIPES AND FITTINGS

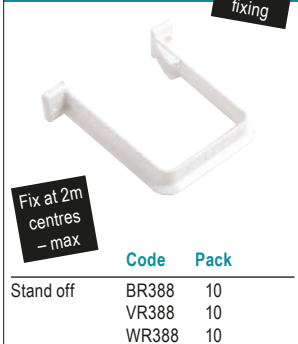
65mm

DOWNPIPE



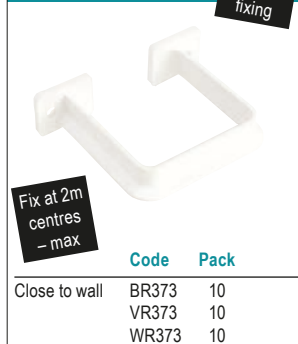
	Code	Pack
2.5 metre	BR525	6
	VR525	6
	WR525	6
4 metre	BR526	6
	VR526	6
	WR526	6
5.5 metre	BR320	4
	VR320	4
	WR320	4

BRACKET



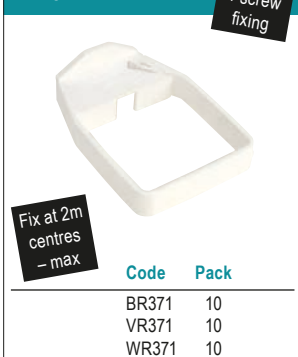
	Code	Pack
Stand off	BR388	10
	VR388	10
	WR388	10

BRACKET



	Code	Pack
Close to wall	BR373	10
	VR373	10
	WR373	10

BRACKET



	Code	Pack
BR371	BR371	10
	VR371	10
	WR371	10

CONNECTOR



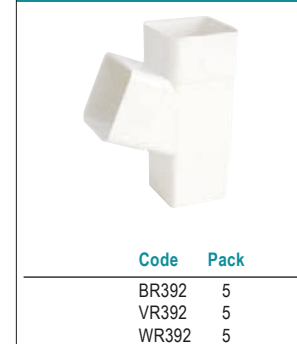
	Code	Pack
BR389	BR389	5
	VR389	5
	WR389	5

ADJUSTABLE OFFSET



	Code	Pack
BR399	BR399	5
	VR399	5
	WR399	5

112½° BRANCH



	Code	Pack
BR392	BR392	5
	VR392	5
	WR392	5

HOPPER HEAD



	Code	Pack
BR014	BR014	1
	VR014	1
	WR014	1

ACCESS PIPE



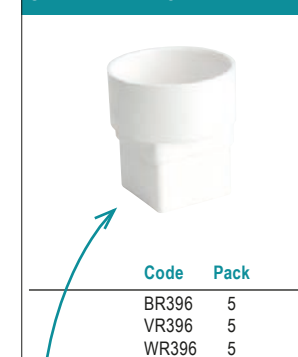
	Code	Pack
VR301	VR301	1
	WR301	1

SQUARE/ROUND ADAPTOR



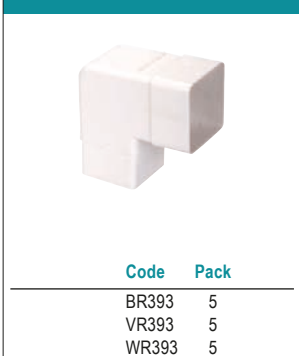
	Code	Pack
BR397	BR397	5
	VR397	5
	WR397	5

SWIVEL ADAPTOR



	Code	Pack
BR396	BR396	5
	VR396	5
	WR396	5

92½° BEND



	Code	Pack
BR393	BR393	5
	VR393	5
	WR393	5

112½° OFFSET BEND



	Code	Pack
BR390	BR390	5
	VR390	5
	WR390	5

SHOE



	Code	Pack
BR391	BR391	5
	VR391	5
	WR391	5

GOOD TO KNOW

Install a Uni-Fit Outlet (p20) and position your downpipe anywhere you want!

Perfect for conservatories where there are lots of windows to avoid!



GOOD TIP

The Swivel Adaptor allows Offset Bends to 'swivel' in any direction, ideal for misaligned drainage points.



Each product code is prefixed with a colour.

Example BR125, where 'B' = BLACK

125

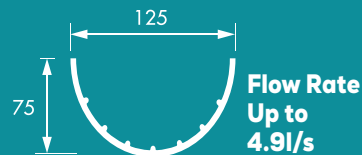
A Deeper Profile

125mm SUREFIT GUTTER SYSTEM

With Surefit strength and a volume you can trust, 125 is **GOOD** for large UK roof sizes. Plus you can increase the volume even more by installing the superior 82mm downpipe system.

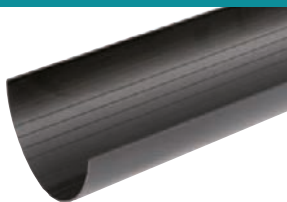


AVAILABLE IN
**FOUNDRY
FINISH®**



125 FOR LARGE ROOFS

GUTTER



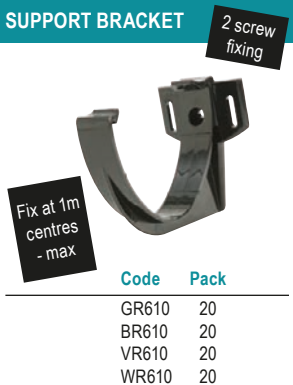
	Code	Pack
4 metre	GR640	5
	BR640	5
	VR640	5
	WR640	5

JOINT BRACKET



	Code	Pack
	GR608	10
	BR608	10
	VR608	10
	WR608	10

SUPPORT BRACKET



	Code	Pack
	GR610	20
	BR610	20
	VR610	20
	WR610	20

90° EXTERNAL ANGLE

See page 43 for special fabrications.



	Code	Pack
	GR605	5
	BR605	5
	VR605	5
	WR605	5

90° INTERNAL ANGLE



	Code	Pack
	GR615	5
	BR615	5
	VR615	5
	WR615	5

135° EXTERNAL ANGLE



	Code	Pack
	GR607	5
	BR607	5
	VR607	5
	WR607	5

135° INTERNAL ANGLE



	Code	Pack
	GR617	5
	BR617	5
	VR617	5
	WR617	5

68mm RUNNING OUTLET



	Code	Pack
	GR611	5
	BR611	5
	VR611	5
	WR611	5

82mm RUNNING OUTLET



	Code	Pack
	GR682	5
	BR682	5
	VR682	5
	WR682	5

EXTERNAL STOPEND



	Code	Pack
	GR613	10
	BR613	10
	VR613	10
	WR613	10

INTERNAL STOPEND



	Code	Pack
	GR602	10
	BR602	10
	VR602	10
	WR602	10

ADAPTOR SEAL



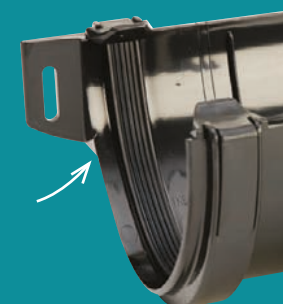
	Code	Pack
	GR600	5

Replaces standard seal. Allows connection to most deep profile systems.

GOOD TO KNOW

The slotted fixing points on 125 angles mean you can fix directly to the fascia and they can be adjusted too!

Less brackets – less fuss!



GOOD TO KNOW

125 brackets are super strong, they can hold up to 75kg!



Each product code is prefixed with a colour.

Example BR125, where 'B' = BLACK

125

68mm

68mm PIPES AND FITTINGS

125

82mm

82mm PIPES AND FITTINGS

DOWNPIPE



	Code	Pack
2 metre	BR518	5
2.5 metre	GR519	5
	BR519	5
	VR519	5
	WR519	5
4 metre	GR520	5
	BR520	5
	VR520	5
	WR520	5
5.5 metre	GR521	5
	BR521	5
	VR521	5
	WR521	5

BRACKET



Fix at 2m centres - max

1 screw fixing

Code	Pack
GR019	10
BR019	10
VR019	10
WR019	10

BRACKET



Fix at 2m centres - max

2 screw fixing

Code	Pack
GR046	10
BR046	10
VR046	10
WR046	10

CONNECTOR



Code	Pack
GR017	10
BR017	10
VR017	10
WR017	10

92½° BEND



Code	Pack
GR577	10
BR577	10
VR577	10
WR577	10

112½° OFFSET BEND



Code	Pack
GR020	10
BR020	10
VR020	10
WR020	10

SHOE



Code	Pack
GR021	10
BR021	10
VR021	10
WR021	10

112½° BRANCH



Code	Pack
GR022	5
BR022	5
VR022	5
WR022	5

DOWNPIPE



	Code	Pack
4 metre	GR700	5
	BR700	5
	VR700	5
	WR700	5

BRACKET



Fix at 2m centres - max

2 screw fixing

Code	Pack
GS612	10
BS612	10
VS612	10
WS612	10

CONNECTOR



Code	Pack
GR717	5
BR717	5
VR717	5
WR717	5

112½° OFFSET BEND



Code	Pack
GR720	6
BR720	6
VR720	6
WR720	6

SHOE



Code	Pack
GR721	5
BR721	5
VR721	5
WR721	5

112½° BRANCH



Code	Pack
GR722	5
BR722	5
VR722	5
WR722	5

REDUCER



82mm Spigot to 68mm Socket.

Code	Pack
GR004	5

GOOD TIP

Replace your 68mm downpipe with 82mm (using the R682) to drain bigger roofs with fewer outlets

GOOD TO KNOW

ACCESSORIES/SPARES AVAILABLE
Rise & Fall Brackets p37
Spare Seals p38



Each product code is prefixed with a colour.

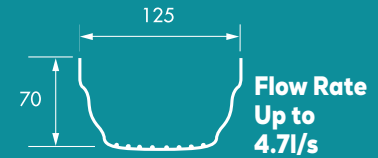
Example BR125, where 'B' = BLACK

REGENCY

For Style & Volume

125mm SUREFIT GUTTER SYSTEM

Designed to add a touch of elegance to any modern or period style buildings. Regency offers a flow rate of up to 4.7l/s – a **GOOD** choice for large roof areas.



GUTTER

	Code	Pack
4 metre	BR896	5
	VR896	5
	WR896	5
	AGR896	5

JOINT BRACKET

	Code	Pack
	BR908	5
	VR908	5
	WR908	5
	AGR908	5

SUPPORT BRACKET

2 screw fixing

Fix at 1m centres – max

	Code	Pack
	BR910	20
	VR910	20
	WR910	20
	AGR910	20

EXTERNAL STOPEND

	Code	Pack
	BR913	5
	VR913	5
	WR913	5
	AGR913	5

INTERNAL STOPEND

	Code	Pack
	BR902	5
	VR902	5
	WR902	5
	AGR902	5

LONG EXTERNAL STOPEND

Requires a support bracket

	Code	Pack
	BR914	5
	VR914	5
	WR914	5

90° EXTERNAL ANGLE

See page 43 for special fabrications.

	Code	Pack
	BR935	5
	VR935	5
	WR935	5
	AGR935	5

90° INTERNAL ANGLE

	Code	Pack
	BR945	5
	VR945	5
	WR945	5
	AGR945	5

RUNNING OUTLET

For Squareflo & Regency pipe

Patented.

	Code	Pack
	BR911	10
	VR911	10
	WR911	10
	AGR911	10

135° EXTERNAL ANGLE

	Code	Pack
	BR937	5
	VR937	5
	WR937	5
	AGR937	5

135° INTERNAL ANGLE

	Code	Pack
	BR947	5
	VR947	5
	WR947	5
	AGR947	5

UNIFIT OUTLET

For Squareflo & Regency gutter

W= 64mm H=45mm D=65mm

	Code	Pack
	BR400	10
	VR400	10
	WR400	10
	AGR400	10

Use a 60mm hole cutter. Outlet suitable for 68mm Round, Squareflo or Regency pipes.

GOOD TO KNOW

The external 'Insert to Here' lines on Regency gutter fittings make it easier to install your gutter to the correct position – without having to look over the top of your gutter!

GOOD TO KNOW

ACCESSORIES/SPARES AVAILABLE

Rise & Fall Brackets p37
Spare Seals p38

Each product code is prefixed with a colour.

BLACK B BROWN V WHITE W ANTHRACITE GREY AG

Example BR125, where 'B' = BLACK

REGENCY



74mm PIPES AND FITTINGS

DOWNPIPE



	Code	Pack
4 metre	BR893	6
	VR893	6
	WR893	6
	AGR893	6

BRACKET



2 screw fixing

Fix at 2m centres - max

Code	Pack
BR919	10
VR919	10
WR919	10
AGR919	10

5mm BRACKET SPACER



Code	Pack
VR927	50

CONNECTOR



Code	Pack
BR917	5
VR917	5
WR917	5
AGR917	5

112½° BEND



Code	Pack
BR920	5
VR920	5
WR920	5
AGR920	5

112½° BRANCH



Code	Pack
BR922	5
VR922	5
WR922	5
AGR922	5

SHOE



Code	Pack
BR921	5
VR921	5
WR921	5
AGR921	5

REGENCY TO 68mm REDUCER



Code	Pack
BR924	5
VR924	5
WR924	5
AGR924	5

HOPPER HEAD



W= 254mm H=230mm D=150mm

Code	Pack
BR014	1
VR014	1
WR014	1
AGR014	1



with our unique profiled downpipe

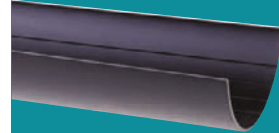
THE CURVES JUST KEEP ON GOING

HEY GOOD LOOKIN'

A cast iron look without the expense

Half Round

The standard one



p25

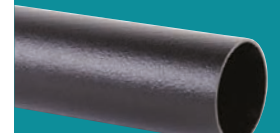
125

The deeper profile



p26

Foundry Finish Soil



p71

**FOUNDRIY
FINISH**



HALF ROUND

FOUNDRY FINISH
- 112mm SUREFIT
GUTTER SYSTEM

125

FOUNDRY FINISH
- 125mm SUREFIT
GUTTER SYSTEM

GUTTER



	Code	Pack
4 metre	CBR512	1

JOINT BRACKET



	Code	Pack
	CBR008	10

SUPPORT BRACKET

1 screw fixing



Fix at 1m centres - max

	Code	Pack
	CBR010	50

GUTTER

Deep profile



	Code	Pack
4 metre	CBR640	1

JOINT BRACKET



	Code	Pack
	CBR608	10

SUPPORT BRACKET

2 screw fixing



Fix at 1m centres - max

	Code	Pack
	CBR610	50

90° ANGLE

See page 43 for special fabrications.



	Code	Pack
	CBR005	5

135° ANGLE



	Code	Pack
	CBR007	5

RUNNING OUTLET



	Code	Pack
	CBR011	5

90° EXTERNAL ANGLE

See page 43 for special fabrications.



	Code	Pack
	CBR605	5

90° INTERNAL ANGLE



	Code	Pack
	CBR615	5

STOPEND



NB: Internal Stopend shown

	Code	Pack
Internal	CBR602	10
External	CBR613	10

EXTERNAL STOPEND



	Code	Pack
	CBR013	10

GOOD TO KNOW

Make installation even easier!

Apply a small amount of Hunter silicone lubricant onto the seals of your joint brackets, outlets and angles.



135° EXTERNAL ANGLE



	Code	Pack
	CBR607	5

135° INTERNAL ANGLE



	Code	Pack
	CBR617	5

RUNNING OUTLET



	Code	Pack
	CBR611	5

Fits 68mm pipe.

PIPES & FITTINGS

FOUNDRY FINISH
- 68mm

DOWNPIPE



Code Pack

2.75 metre CBR519 1

EARED PIPE CONNECTOR



Code Pack

CBR017 10

EARED PIPE BRACKET



Fix at 2m
centres
- max

2 screw
fixing

Code Pack

CBR043 10

92½° BEND



Code Pack

CBR577 10

112½° BEND



Code Pack

CBR020 10

112½° BRANCH



Code Pack

CBR022 5

EARED SHOE



Code Pack

CBR021 5

CURVED HOPPER HEAD



W= 270mm H=253mm D=190mm

Code Pack

CBR044 1

COACH BOLTS FIXINGS



Pack of 10

M6 45mm long

Code Pack

CBF001

Supersize rainwater profiles

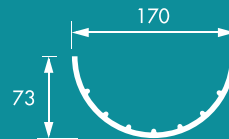
FOR WHEN BIG ISN'T BIG ENOUGH...

For Great Volumes

HIGHFLO

170mm GUTTER SYSTEM

Designed to provide superior drainage with a flow rate of up to 6l/s, Highflo is a **GOOD** choice for super size roofs and commercial buildings.



Flow Rate
Up to 6l/s

EXTERNAL STOPEND



Code Pack

GR402	10
BR402	10
WR402	10

UNIFIT OUTLET

For use with flat bottom gutters



W= 122mm H=65mm D=110mm

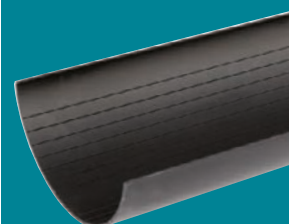
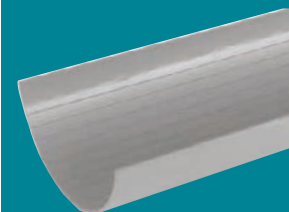
Code Pack

GR410	1
-------	---

110mm Spigot. Use a 102mm hole cutter.

CHOICE OF COLOURS

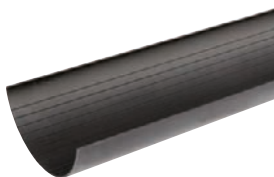
& it's super strong too!



Each product code is prefixed with a colour.

Example BR125, where 'B' = BLACK

GUTTER



Code Pack

4 metre	GR515	5
	BR515	5
	WR515	5

JOINT BRACKET



Code Pack

GR042	10
BR042	10
WR042	10

SUPPORT BRACKET

2/3 screw fixing



Fix at 1m centres - max

Code Pack

GR452	20
BR452	20
WR452	20

90° ANGLE

See page 43 for special fabrications.



Code Pack

GR451	1
BR451	1
WR451	1

RUNNING OUTLET



Code Pack

GR454	1
BR454	1
WR454	1

Fits 110mm pipe.

STOPEND OUTLET



Code Pack

GR455	1
BR455	1

Fits 110mm pipe.

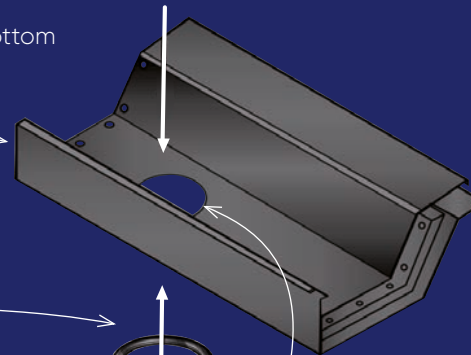
GOOD TO KNOW

PLACE YOUR 110mm DOWNPIPE ANYWHERE!

Threaded outlet



Flat bottom gutter



Seal

Spigot suits 110mm socket

Hole size 102mm

Any flat bottom gutter no thicker than 15mm

HIGHFLO

110mm PIPES AND FITTINGS

110mm

DOWNPIPE



	Code	Pack
3 metre	BS505	1
	GS505	1
	WS505	1
4 metre	BS506	1
	GS506	1
	WS506	1

PIPE CONNECTOR



Code	Pack
BS208	1
GS208	1
WS208	1

DRAIN CONNECTOR



Universal
see p84

Code	Pack
BS121	1
GS121	1

SHOE



Code	Pack
BS266	1
GS266	1
WS266	1

HOPPER HEAD



W= 316mm H=223mm D=203mm

Code	Pack
BR465	1
GR465	1
WR465	1

ACCESS PIPE



Code	Pack
BS309	1
GS309	1
WS309	1

BRACKET - PIPE



1 screw
fixing

Fix at 2m
centres
- max

Code	Pack
BS217	10
GS217	10
WS217	10

BRACKET - PIPE



2 screw
fixing

Fix at 2m
centres
- max

Code	Pack
BS219	10
GS219	10
WS219	10

92½° BEND



Code	Pack
BS322	1
GS322	1
WS322	1

112½° TOP OFFSET BEND



Code	Pack
BS270	1
GS270	1
WS270	1

112½° BOTTOM OFFSET BEND



Code	Pack
BS271	1
GS271	1
WS271	1

SOCKETED DOWNPIPE



	Code	Pack
3 metre	BS508	1
	GS508	1
	WS508	1

BRACKET - SOCKET



2 screw
fixing

Fix at 2m
centres
- max

Code	Pack
BS220	10
GS220	10
WS220	10

BRACKET - PIPE/SOCKET



2 screw
fixing

Fix at 2m
centres
- max

Code	Pack
GS570	5

135° BEND



Code	Pack
BS331	1
GS331	1
WS331	1

112½° BRANCH



Code	Pack
BS336	1
GS336	1

92½° BRANCH

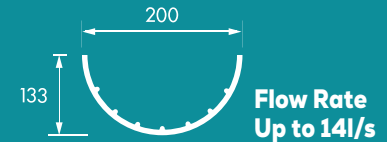


Code	Pack
BS334	1
GS334	1

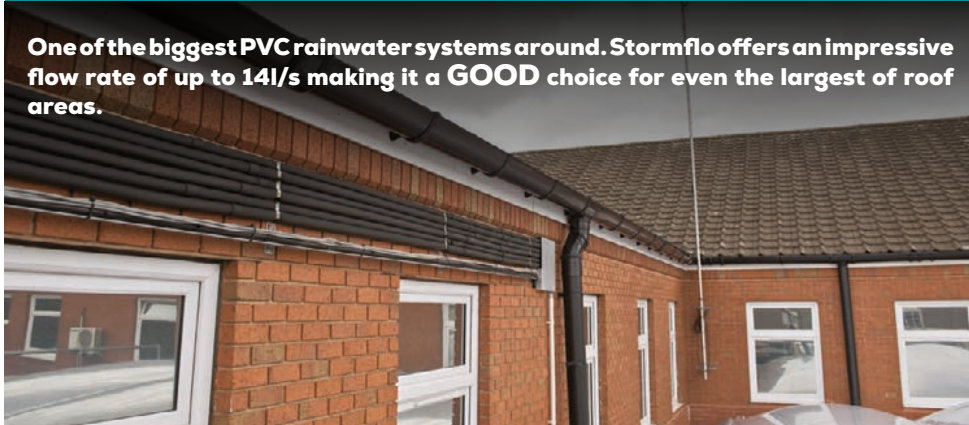
The Big One

STORMFLO

200mm
GUTTER SYSTEM



One of the biggest PVC rainwater systems around. Stormflo offers an impressive flow rate of up to 14l/s making it a **GOOD** choice for even the largest of roof areas.



OUTLET ADAPTOR



Use with a R711 to convert to 110mm downpipe

Code	Pack
GR716	2
BR716	2

For 110mm Highflo downpipes.

EXTERNAL STOPEND



Code	Pack
GR713	2
BR713	2

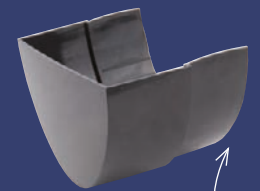
Remember: order 1 support bracket.

GOOD TO KNOW

Need a Stopend Outlet?



Cut external stopend



Place into running outlet

GUTTER



Code	Pack
GR740	2
BR740	2

4 metre

JOINT BRACKET



Code	Pack
GR708	6
BR708	6

SUPPORT BRACKET



Fix at 800mm centres - max

Code	Pack
GR710	5
BR710	5

RUNNING OUTLET



Code	Pack
GR711	1
BR711	1

Spigot fits 160mm pipe.

90° ANGLE

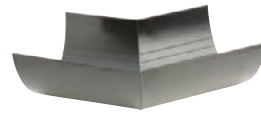
See page 43 for special fabrications.



Code	Pack
GR705	1
BR705	1

Remember: order 2 Joint Brackets.

135° ANGLE



Code	Pack
GR707	1
BR707	1

Remember: order 2 Joint Brackets.

strong. secure. PROTECTION

Designed for increased protection against snow loading and wind updrafts



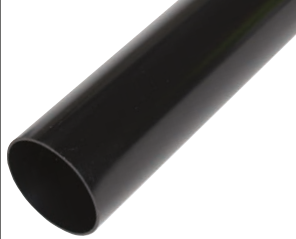
Each product code is prefixed with a colour.
Example BR125, where 'B' = BLACK

STORMFLO

160mm PIPES AND FITTINGS

160mm

DOWNPIPE



Code Pack

3 metre	BS534	1
	GS534	1
4 metre	GS535	1

BRACKET – PIPE



Fix at 2m centres – max

Code Pack

BS412	10
GS412	10

BRACKET – PIPE/SOCKET



Fix at 2m centres – max

Code Pack

GS571	5
-------	---

Galvanised.

ACCESS PIPE



Code Pack

BS472	1
GS472	1

92½° BRANCH



Code Pack

GS427	1
BS427	1

SHOE



Code Pack

BS436	1
GS436	1

SOCKETED DOWNPIPE



Code Pack

3 metre	BS533	1
	GS533	1

92½° BEND



Code Pack

BS403	1
GS403	1

112½° TOP OFFSET BEND



Code Pack

BS424	1
GS424	1

112½° BOTTOM OFFSET BEND



Code Pack

BS425	1
GS425	1

135° BEND



Code Pack

BS404	1
GS404	1

PIPE CONNECTOR



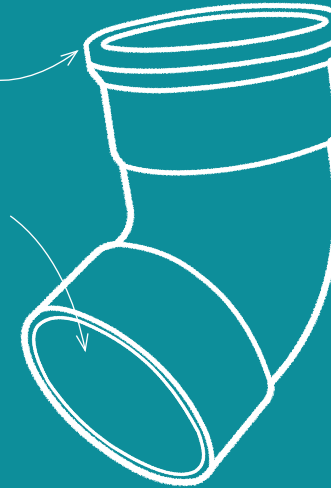
Code Pack

BS406	1
GS406	1

GOOD TO KNOW

Offsets

1. Push-fit Points up!
Your push-fit socket should always point upwards.
2. Don't screw – glue!
Secure your solvent sockets with solvent cement.
3. Always support!
Install bracket as close to the offset as possible.



REDUCER



160x110mm

Code Pack

GS420	1
-------	---

GOOD TIP

Want to connect to 110mm drain?
Use an Outlet Adaptor (R716) to connect Stormflo to 110mm downpipe, see p34

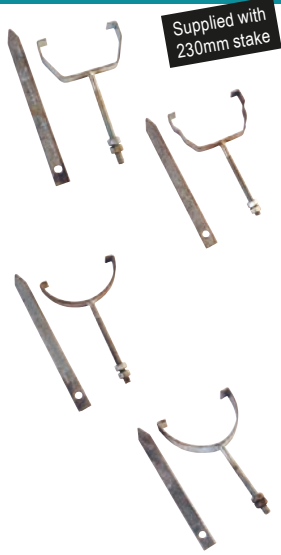


Each product code is prefixed with a colour.

Example BR125, where 'B' = BLACK

BRACKETS

RISE AND FALL BRACKETS



Supplied with 230mm stake

	Code	Pack
Squareflo	GR377	25
Regency	GR909	25
HR 112mm	GR018	25
125	GR601	20

Remember you'll need one either side of outlets, angles & joint brackets.

TOP RAFTER BRACKET



	Code	Pack
	GR015	25

Not for use with 170mm Highflo or 200mm Stormflo gutter.

LONG RISE/FALL BRACKET



Supplied with 300mm Stake

	Code	Pack
HR 112mm	GR009	25

VARIABLE RISE /FALL BRACKET



	Code	Pack
230mm	BR026	10
300mm	BR027	10

Including galvanised stake, order gutter bracket separately.

SIDE RAFTER BRACKET



	Code	Pack
	GR016	25

Not for use with 170mm Highflo or 200mm Stormflo gutter.

ADDITIONAL FIXING BRACKETS

GALVANISED STAKE



	Code	Pack
230mm	GR018A	1
330mm	GR009A	1

WEDGE SPACER



	Code	Pack
22½° Pitch	GR002	50

Not for use with 170mm Highflo or 200mm Stormflo gutter.

ADJUSTABLE RAFTER ARMS

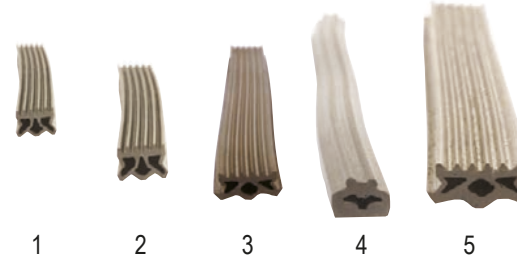


	Code	Pack
Side	RSA1A	1
Top	RTA1A	1

Galvanised steel
Including nut, bolt and anti slip washer.

SPARES & ANCILLARIES

SPARE RAINWATER SEAL



	Code	Pack
1. HR 76mm	3SR7601	1
2. HR 112mm	3SSI200	1
3. Squareflo	3SSI140	1
3. 125	3SR125	1
3. Regency	3SR122A	1
4. Highflo	3SR1520	1
5. Stormflo	3SRS355	1

LUBRICANT



	Code	Pack
30ml	SC960	1
250ml	SC966	1

SILICONE SPRAY



	Code	Pack
400ml	SC967	1

SOLVENT CLEANER



	Code	Pack
250ml	SC951	1

SOLVENT CEMENT



BS EN ISO 14680 for PVC.

	Code	Pack
125ml	SC953	1
250ml	SC954	1

UNIVERSAL SILICONE LUBRICANT

We all know lubricant makes installations easier but this makes it even easier still with a built in sponge applicator.



	Code	Pack
50g	SC961	1

RAINWATER INNOVATIONS

COMPACT RAINWATER GULLY



Accepts 82mm Round, Square or Regency pipes

110mm Inlet/Outlet.

Code Pack

DS042 6

Surface water only. Not for foul water use.

REDUCER



68mm socket to 110mm socket. To connect downpipe to below ground drainage

Code Pack

68mm BR768 10

82mm BR767 10

For use with DS042, Regency or Squareflo.

COURTYARD GULLY



Code Pack

110mm DCR300 6

GUTTER LEAF GUARD



For 112mm Half Round and Squareflo

Code Pack

Guard R500 1

Clip RG1X 18

5 metre pack (10 x 500mm).

DRAIN LEAF GUARD



Covers drains 300mm wide x 265mm

Code Pack

DS500 15

Accepts downpipe up to 110mm.

OUTLET LEAF GUARD



Code Pack

68mm BRV225 20

REDUCER



68mm Round or Square pipe to 110mm Spigot

Code Pack

MKRAB 1

UNIFIT OUTLET



For Squareflo & Regency gutter

W= 64mm H=45mm D=65mm

Code Pack

68mm BR400 10

VR400 10

WR400 10

AGR400 10

Use a 57mm hole cutter. Outlet suitable for 68mm Round, Squareflo or Regency pipes.

UNIFIT OUTLET



For use with flat bottom gutters

Use 102mm hole cutter
W=122mm H=65mm D=110mm

Code Pack

110mm GR410 1

Use a 102mm hole cutter.

ROOF OUTLETS

For Flat Roofs

A **GOOD** cost-effective alternative to complicated and expensive metal outlets. Compatible with 3 layer bituminous felt, PVCu roof membranes and hot asphalt.



ROOF OUTLET

Spigot tail



Code Pack

82mm RV637 1

ROOF OUTLET

Spigot tail



Code Pack

110mm RV369 1

ROOF OUTLET

Spigot tail



Code Pack

160mm RV482 1

BALCONY OUTLET

Solvent socket tail

Studs may require trimming upon installation



Code Pack

82mm RV195 1

BALCONY OUTLET

Solvent socket tail

Studs may require trimming upon installation



Code Pack

110mm RV196 1

BOX GUTTER OUTLET

Spigot tail



Code Pack

82mm RV491 1



TELESCOPIC OFFSET



Code Pack

68mm BR578 5

Minimum order quantity 5.

It's telescopic

Slide to adjust from 140-330mm

Self secures

It grips onto your outlet and will hold up to a 5.5m pipe, no hands!

Safer for working up a ladder

No more juggling products

...no more on-site fabrications to form your offset!

QUICK FIX CLIPS



Code Pack

68mm BR579 5

Minimum order quantity 5 packs of 5. Fix with countersunk screws.

They're adjustable

With four 5mm offset increments

Easy to align

With plumb and chalk line grooves

The clip is detachable

So it's really easy to remove your downpipe

...and they're designed for drill drivers!

SPECIAL FABRICATIONS

Fabrication Service

Hunter realises that not all product requirements can be achieved through standard components.



Fabricated Gutter Angles

Please state required angle on purchase order. Note: minimum 40 degree angle.

Half Round 112mm

BRF100 – Black

GRF100 – Grey

VRF100 – Brown

WRF100 – White

Half Round 76mm

BRF800 – Black

GRF800 – Grey

VRF800 – Brown

WRF800 – White

Squareflo 114mm

BRF200 – Black

VFR200 – Brown

WRF200 – White

125

BRF300 – Black

VRF300 – Brown

WRF300 – White

Regency 125mm

BRF400 – Black

VRF400 – Brown

WRF400 – White

Highflo 170mm

BRF600 – Black

GRF600 – Grey

WRF600 – White

Stormflo 200mm

BRF700 – Black

GRF700 – Grey

Gutter Adaptors

Half Round 125mm to 112mm Half Round

BRF901 – Black – L/H

GRF901 – Grey – L/H

VRF901 – Brown – L/H

WRF901 – White – L/H

BRF902 – Black – R/H

GRF902 – Grey – R/H

VRF902 – Brown – R/H

WRF902 – White – R/H

Other combinations available on request

INSTALLATION

STEP ONE



Before starting work, identify position of drain, run a plumb-line and fix gutter outlet. Check fascia is level and determine fall (if required).

STEP TWO



Fix support bracket at furthest end and run a string-line to the outlet.

STEP THREE



From outlet, fix support brackets at a maximum of one metre centres.

STEP FOUR



Insert gutter to the 'insert to here' line on the first fitting. At the other end of the gutter mark the position of the next fitting on the fascia.

STEP FIVE



Remove gutter and fix next fitting using your mark line. Ensuring fittings are level by using a string line.

STEP SIX



Fit length of gutter and stopend, with support bracket at furthest end.

STEP SEVEN



Fit top offset bend to outlet, then using bottom offset determine length of pipe required.

STEP EIGHT



Fit a pipe clip below the bottom offset, then at a maximum of two metres apart.

STEP NINE



Check water tightness by blocking off any outlet and performing a static water test.

GOOD TIP

Tip for Surefit Clips: Insert the rear gutter edge under the back retaining lip of the snap lock clip. Ensure that it is fully home. With all fingers over the front edge of the gutter, pull down, while pushing up on the fitting with your thumbs until the gutter snaps into position. DO NOT REMOVE THE SUREFIT CLIPS.

RAINWATER CALCULATIONS

It's simple with Hunter Surefit!

Using our handy step-by-step guide it is easy to select the right gutter for your project



Step One: Calculate Effective Maximum Roof Area

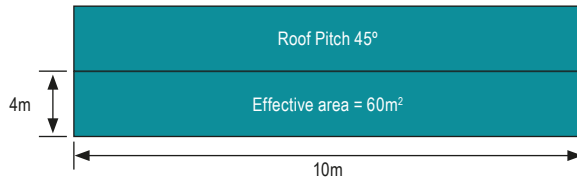
This can be calculated by using the following formula (see diagram below):

MULTIPLICATION FACTORS

Use of multiplication factors to establish effective roof area.

Using the roof dimensions as the example below with a 45° roof pitch.

4m wide x 10m long x 1.5 = 60m²



Roof pitch	10°	12.5°	15°	17.5°	20°	22.5°	25°	27.5°
Factor	1.088	1.111	1.134	1.158	1.182	1.207	1.233	1.260

Roof pitch	30°	32.5°	35°	37.5°	40°	42.5°	45°	47.5°
Factor	1.288	1.319	1.350	1.384	1.419	1.459	1.500	1.547

These figures are based on a rainfall intensity of 0.021 l/s per metre squared, roof pitch not exceeding 50°, gutters running full.

Refer to The Building Regulations 2002 Approved document H and BSEN 12056-2: 200, Part 3: Roof drainage, layout and calculations.

GOOD TIP

Installation Tips

- For gutter fixings onto wooden fascias use 25mm x No.10 round head rust proof screws
- For gutter fixings onto PVC fascias use 35mm x 5mm No.10 parallel thread zinc plated or stainless steel, recess pan head, single-start self tapping screws
- For downpipe supports use 32mm x No.10 screws to masonry wall plugs

Step Two: Select Your CONFIGURATION and Profile

Flow Capacity:		Gutter Fixed Level		Gutter Fixed at 1:350	
		Gutter Flow (Litres/Sec)	Roof Area m ²	Gutter Flow (Litres/Sec)	Roof Area m ²
Downpipe at centre	HALF ROUND				
	76mm	0.7	34	0.8	38
	112mm	1.8	86	2.6	125
	SQUAREFLO	3.2	154	3.8	182
	125				
	68mm (Downpipe)	3.8	182	4.6	221
	82mm (Downpipe)	4.0	191	4.9	235
	REGENCY	4.2	202	4.7	226
	HIGHFLO	5.4	258	6.0	289
	STORMFLO				
	110mm	11.1	534	12.4	598
	160mm	12.5	601	14.0	673
Downpipe at end	HALF ROUND				
	76mm	0.5	24	0.6	29
	112mm	0.9	43	1.3	62
	SQUAREFLO	1.6	77	2.0	96
	125				
	68mm (Downpipe)	2.1	101	2.4	115
	82mm (Downpipe)	2.2	106	2.5	120
	REGENCY	2.1	101	2.3	110
	HIGHFLO	2.8	136	2.9	137
	STORMFLO				
	110mm	5.9	282	5.9	284
	160mm	6.6	318	6.7	320
Downpipe at end (with angle within 2m of downpipe)	HALF ROUND				
	76mm	0.4	20		
	112mm	0.8	38		
	SQUAREFLO	1.3	65		
	125				
	68mm (Downpipe)	1.8	86		
	82mm (Downpipe)	1.9	90		
	REGENCY	1.8	86		
	HIGHFLO	2.4	115		
	STORMFLO				
	110mm	5.0	239		
	160mm	5.6	270		



SOIL AND WASTE SYSTEMS

Push-fit & Solvent Soil...

Pipes



p49

Bends & Branches



p50

Brackets & Boss Pipes



p55

Adaptors & Reducers



p57

Access & Ventilation



p59

WC Connectors



p61

Cast Iron Effect...

Foundry Finish

A Cast Iron look without the expense



p71

Waste...

Push-fit Waste



p73

Solvent Waste



p75

Overflow



p81

Compression Waste



p85

Traps



p89

Grease Management...

Floor Drainage



p98

Endura



p101



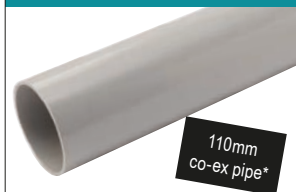
PIPE

Durable, lightweight and impact resistant, Hunter's Push-fit and Solvent Soil Systems are a **GOOD** reliable way of carrying sanitary waste from domestic, commercial and industrial installations.



82/110/160mm PUSH-FIT & SOLVENT

PIPE - PLAIN ENDED



	Code	Pack
82mm (3m)	GS599	1
	BS599	1
110mm (1m)	WS204	1
110mm (3m)	GS505	1
	BS505	1
	WS505	1
110mm (4m)	GS506	1
	BS506	1
	WS506	1
160mm (3m)	GS534	1
	BS534	1
160mm (4m)	GS535	1

SOCKETED PIPE



	Code	Pack
82mm (3m)	GS602	1
	GS603	1
110mm (2m)	GS507	1
	BS507	1
110mm (3m)	GS508	1
	BS508	1
	WS508	1
110mm (4m)	BS509	1
	GS509	1
110mm (6m)	BS549	1
160mm (3m)	GS533	1
	BS533	1
160mm (4m)	GS532	1
	BS532	1
160mm (6m)	GS530	1

COUPLING & BENDS

82/110/160mm PUSH-FIT & SOLVENT

SINGLE SOCKET

Solvent socket tail



	Code	Pack
82mm	GS604	1
	BS604	1
110mm	GS208	1
	BS208	1
	WS208	1
160mm	GS406	1
	BS406	1

92½° BEND

Spigot tail



	Code	Pack
82mm	GS619	1
	BS619	1
110mm	GS322	1
	BS322	1
	WS322	1
160mm	GS403	1
	BS403	1

SLIP COUPLING



	Code	Pack
82mm	GS605	1
110mm	GS211	1
	BS211	1
	WS211	1
160mm	GS410	1

92½° BEND

Solvent socket tail



	Code	Pack
110mm	GS319	1

92½° BEND

Double solvent socket



	Code	Pack
110mm	GS293	1
	BS293	1
	WS293	1

DOUBLE SOCKET



	Code	Pack
110mm	GS210	1
	BS210	1
	WS210	1

92½° BEND

Double socket



	Code	Pack
110mm	GS671	1
	BS671	1
	WS671	1

SOIL/WASTE FITTINGS GUIDE

- P** Push-fit fittings
- S** Solvent fittings



Each product code is prefixed with a colour.

Example BR125, where 'B' = BLACK

* Co-ex 110mm soil in Grey and Black. See website for more information.
Frame qty: 110mm = 100 / 160mm = 46

BENDS

82/110/160mm
PUSH-FIT &
SOLVENT

82mm

110mm

160mm

90° LONG BEND

Spigot tail



S	Code	Pack
110mm	GS299	1
	BS299	1
	WS299	1

104° BEND

Spigot tail



P	Code	Pack
110mm	GS325	1

135° BEND

Spigot tail



P	Code	Pack
82mm	GS621	1
	BS621	1
110mm	GS331	1
	BS331	1
	WS331	1
160mm	GS404	1
	BS404	1

112½° TOP OFFSET BEND

Solvent socket tail



P S	Code	Pack
82mm	BS630	1
110mm	GS270	1
	BS270	1
	WS270	1
160mm	GS424	1
	BS424	1

112½° BOTTOM OFFSET BEND

Spigot tail



S	Code	Pack
82mm	GS631	1
	BS631	1
110mm	GS271	1
	BS271	1
	WS271	1
160mm	GS425	1
	BS425	1

135° BEND

Spigot tail



S	Code	Pack
110mm	GS332	1
	BS332	1

135° BEND

Double solvent socket



S	Code	Pack
110mm	GS294	1
	BS294	1
	WS294	1

RING SEAL ADAPTOR

For any solvent sockets



P S	Code	Pack
110mm	GS201	10
	BS201	10

112½° OFFSET BEND

Spigot tail



P	Code	Pack
82mm	GS700	1
110mm	GS263	1
160mm	GS436	1
	BS436	1

135° OFFSET BEND

Double socket



P	Code	Pack
110mm	GS676	1
	BS676	1
	WS676	1

ADJUSTABLE BEND

Spigot tail



Adjusts from 5° - 30°

Twist to lock

P	Code	Pack
110mm	GS329	1

170° ADAPTOR BEND

Solvent socket tail



P S	Code	Pack
110mm	GS324	1

160° ADAPTOR BEND

Solvent socket tail



P S	Code	Pack
110mm	GS323	1

GOOD TIP

Remember to clean your pipe with Solvent Cleaner before applying Solvent Cement.

This ensures a watertight joint by removing all traces of dirt & grease.

MULTIFLEX BEND

Spigot tail



Adjusts from 0° - 90°

- One bend covers all angles from 0 to 90°.
- Saving you time and money – you'll never be stuck on site without the correct bend again!
- Cannot be solvent welded
- For external use only

P	Code	Pack
110mm	MFBSG	1
	MFBSB	1

SOIL/WASTE FITTINGS GUIDE

- P** Push-fit fittings
- S** Solvent fittings



Each product code is prefixed with a colour.
Example BR125, where 'B' = BLACK

BRANCHES

82/110/160mm
PUSH-FIT &
SOLVENT

82mm

110mm

160mm

87½° BRANCH

Triple socket



P	Code	Pack
110mm	BS672	1
	GS672	1

92½° BRANCH

Socket / spigot tail



P	Code	Pack
110mm	GS334	1
	BS334	1
	WS334	1
160mm	GS427	1
	BS427	1

92½° BRANCH

Spigot tail



	Code	Pack
110mm	GS297	1
	BS297	1

135° BRANCH

Spigot tail



P	Code	Pack
82mm	GS614	1
110mm	GS278	1
	BS278	1

92½° CORNER BRANCH

Socket tail



S	Code	Pack
110mm	GS301	1
Fabricated.		

Corner and Double Branches

Designed for commercial installations and houses with multiple bathrooms

Corner branches save space by enabling direct connection of two WCs or WC floats from two directions at 90°

Double branches allow connection of back-to-back WCs and WC floats from opposite directions

GOOD TO KNOW

92½° BRANCH

Spigot tail – bosses closed



P	Code	Pack
82mm	GS611	1
3 Boss	BS611	1
110mm	GS269	1
	BS269	1
	WS269	1

5 BOSS 92½° BRANCH

Spigot tail – bosses closed



S	Code	Pack
110mm	GS302	1
	BS302	1

5 BOSS 92½° BRANCH

Triple solvent socket – bosses closed



S	Code	Pack
110mm	GS292	1
	BS292	1
	WS292	1

92½° CORNER BRANCH

Spigot tail



P	Code	Pack
110mm	GS296	1
Fabricated.		

DOUBLE BRANCH

All solvent socket



S	Code	Pack
Only fit vertically		
110mm	GS300	1
	BS300	1

5 BOSS 92½° BRANCH

Solvent socket tail



	Code	Pack
110mm	GS312	1

3 BOSS 104° BRANCH

Spigot tail



P	Code	Pack
110mm	GS272	1
	BS272	1

112½° BRANCH

Spigot tail



P	Code	Pack
110mm	GS336	1
	BS336	1

DOUBLE BRANCH

Triple socket



P	Code	Pack
110mm	GS295	1
	BS295	1

GOOD TIP

To avoid dislodging or damaging rubber seals, always ensure pipe ends are chamfered and lubricated.

SOIL/WASTE FITTINGS GUIDE

- P** Push-fit fittings
- S** Solvent fittings



Each product code is prefixed with a colour.
Example BR125, where 'B' = BLACK

BRACKETS

82/110/160mm
PUSH-FIT &
SOLVENT

BRACKET - PIPE

1 screw
fixing



Code Pack

110mm	GS217	10
	BS217	10
	WS217	10

BRACKET - PIPE

1 screw
fixing



Code Pack

160mm	GS412	10
	BS412	10

BRACKET - PIPE

2 screw
fixing



Code Pack

82mm	GS612	10
	BS612	10
	WS612	10

BRACKET - PIPE

2 screw
fixing



Code Pack

110mm	GS219	10
	BS219	10
	WS219	10

BRACKET - PIPE/SOCKET

2 screw
fixing



Code Pack

110mm	GS570	5
160mm	GS571	5
	Galvanised.	

BRACKET - SOCKET

2 screw
fixing



Code Pack

82mm	GS607	10
	BS607	10

BRACKET - SOCKET

2 screw
fixing



Code Pack

110mm	GS220	10
	BS220	10
	WS220	10

GOOD TO KNOW



S612	110mm
S217, S220, S570	90mm
S412, S571	120mm
S219	91mm
S607	75mm

GOOD TIP

Use socket brackets to support expansion and contraction



BOSS PIPES

82/110/160mm
PUSH-FIT &
SOLVENT

BOSS PIPE

Socket/spigot



1 x 50mm
Open Boss
2 x 50mm
Closed Boss

P

Code Pack

82mm	GS608	1
------	-------	---

4 BOSS PIPE

Socket/spigot



4 x 50mm
Closed Boss

P

Code Pack

110mm	GS244	1
	BS244	1
	WS244	1

32mm BOSS PIPE

Exp. socket



S

Code Pack

110mm	GS216	1
	BS216	1
	WS216	1

Accepts push-fit and solvent waste.

40mm BOSS PIPE

Exp. socket



S

Code Pack

110mm	GS215	1
	BS215	1
	WS215	1

Accepts push-fit and solvent waste.

50mm BOSS PIPE

Exp. socket



S

Code Pack

110mm	GS218	1
	BS218	1
	WS218	1

For 32/40mm solvent weld use a W717 or W718 waste reducer in the open boss.

90° BOSS ADAPTOR



S

Code Pack

32mm	use W104 + W113
40mm	use W106 + W114
50mm	GW725 10

For waste manifold.

WASTE MANIFOLD



- Unique square design, ideal for corners
- Integral baffles to prevent cross flow
- Up to four 50mm connections available
- Simple push-fit connections for waste and soil
- Can be adapted to 32mm and 40mm using a GW058 or GW059 boss adaptor.

P

Code Pack

110mm	GS200	1
-------	-------	---

SOIL/WASTE FITTINGS GUIDE

- P** Push-fit fittings
- S** Solvent fittings



Each product code is prefixed with a colour.

Example BR125, where 'B' = BLACK

BOSS ADAPTORS

82/110/160mm
PUSH-FIT &
SOLVENT

STRAP BOSS



Code Pack

82mm	GS610	10
110mm	GS343	10
	BS343	10
	WS343	10
160mm	GS437	10

BOSS ADAPTOR – PUSH-FIT ONLY



Compatible with upstand snap cap fittings

P	Code	Pack
50mm	GS759	10

BOSS ADAPTOR – SOLVENT ONLY



Compatible with upstand snap cap fittings

S	Code	Pack
32mm	GW105	10
	BW105	10
	WW105	10
40mm	GW107	10
	BW107	10
	WW107	10
50mm	GS758	10
	BS758	10
	WS758	10

BOSS ADAPTOR

For Push-fit & Solvent Pipe



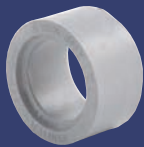
Compatible with flat and upstand snap cap fittings

P S	Code	Pack
32mm	GW058	10
40mm	GW059	10

Product is black.

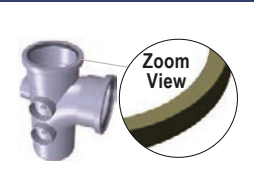
PRE-EXISTING INSTALLATIONS

Have a fitting with a flat snap cap and are looking for a boss adaptor? Visit our website for our full range of boss adaptors.



Compatible with fittings which have a flat snap cap

Compatible with fittings which have an upstand snap cap



REDUCERS

82/110/160mm
PUSH-FIT &
SOLVENT

82x50mm REDUCER

Spigot tail



S	Code	Pack
82mm	GS668	1

Accepts 50mm solvent pipe.

REDUCER

Spigot tail



For use with W104 and W106

S	Code	Pack
110mm	GS264	1
	WS264	1

50mm to 110mm pipe size.

REDUCER to 110mm

Spigot tail



Reduces to 110mm socket

S	Code	Pack
160mm	GS420	1

110x82mm REDUCER

Spigot tail



P	Code	Pack
110mm	GS633	1
	BS633	1

110x82mm REDUCER

Spigot tail



S	Code	Pack
110mm	GS636	1
	BS636	1

FLEXIBLE REDUCER

110mm x 32/40mm



Fits into pipe and fittings.

	Code	Pack
110mm	DS025	10

Underground terms apply to this item.

FLEXIBLE REDUCER

110mm x 32/40/50mm



	Code	Pack
110mm	MKUAG	10
	MKUAB	10
	MKUAW	10

SOCKET PLUG

Spigot tail



	Code	Pack
110mm	GS214	1
	BS214	1
	WS214	1
160mm	GS411	1

SOIL/WASTE FITTINGS GUIDE

- P** Push-fit fittings
- S** Solvent fittings



Each product code is prefixed with a colour.
Example BR125, where 'B' = BLACK

ACCESS

82/110/160mm
PUSH-FIT &
SOLVENT

92½° ACCESS BEND

Spigot tail



P	Code	Pack
82mm	GS620	1
110mm	GS326	1
	BS326	1

92½° ACCESS BEND

Spigot tail



S	Code	Pack
110mm	GS327	1
	BS327	1

ACCESS SADDLE



	Code	Pack
110mm	GS337	10

Direct fix to pipework.

ACCESS CAP

Solvent socket



S	Code	Pack
110mm	GS667	1
	BS667	1

ACCESS PLUG

Spigot



	Code	Pack
82mm	GS618	1
110mm	GS246	1
	BS246	1
	WS246	1

ACCESS PIPE

Double solvent socket



S	Code	Pack
110mm	GS310	1
	BS310	1
	WS310	1

ACCESS PIPE

Socket/Spigot



P	Code	Pack
82mm*	GS616	1
	BS616	1
110mm	GS309	1
	BS309	1
	WS309	1
160mm*	GS472	1
	BS472	1

*Access pipe has no bosses.

92½° ACCESS BRANCH

Spigot tail



P	Code	Pack
110mm	GS281	1
	BS281	1

92½° ACCESS BRANCH

Spigot tail



S	Code	Pack
110mm	GS280	1
	BS280	1

VENTILATION

82/110/160mm
PUSH-FIT &
SOLVENT

WEATHERING SLATE – FLAT

Accepts 82/110mm soil pipe



	Code	Pack
406x406mm	GS590	1

WEATHERING SLATE – ANGLED

82/110mm



	Code	Pack
457x457mm	GS594	1
610x610mm	GS596	1

VENT COWL



	Code	Pack
82mm	GS634	1
	BS634	1

VENT COWL

Solvent socket



S	Code	Pack
110mm	GS355	1
	BS355	1
	WS355	1
160mm	GS422	1

WEATHERING COLLAR



S	Code	Pack
82mm	GS635	1
	BS635	1
110mm	GS358	1
	BS358	1
	WS358	1

EXTRACT COVER



	Code	Pack
82mm	RV591	1
110mm	RVB592	1
	RVW592	1
	RV592	1

For extract ventilation pipe.

AIR ADMITTANCE VALVE

Solvent socket tail



S	Code	Pack
110mm	GS450	1
	BS450	1
	WS450	1

AIR ADMITTANCE INSULATOR



	Code	Pack
110mm	WS451	6

Polystyrene Insulator for WS450.

Air admittance valves

Prevents the release of foul air

Allows your soil stack to be terminated internally
Provides simple rodding access
Can be used as an air test point

Removable diaphragm mechanism for easy maintenance

Can serve up to five stories

WC CONNECTORS

82/110/160mm
PUSH-FIT &
SOLVENT

110mm

From a straight forward job to multiple connections and misaligned pans, there is a Hunter WC Connector for most installations, with all-purpose tails for a speedy connection.



90° CONNECTOR



Code Pack
WS221 12

90° SPACE SAVING CONNECTOR



Code Pack
WS234 12

90° CONNECTOR WITH BOSS

32mm Connection for venting



Code Pack
WS228 12

STRAIGHT CONNECTOR



Code Pack
WS224 9

EXTENSION PIECE



Cut as required opposite end to fins, using a fine tooth saw.

Code Pack
WS226 9

GOOD TO KNOW

All 'Tall' Hunter WC Connectors (the ones on this page) can be cut to length!

Simply remove the black finned seal and cut the connector using a fine tooth saw.

14° CONNECTOR



Code Pack
WS222 18

22mm OFFSET CONNECTOR



Code Pack
WS225 18

STRAIGHT CONNECTOR



Code Pack
WS227 27

14° CONNECTOR

Spigot tail



Code Pack
WS252 18

PIPE - PLAIN ENDED



110mm (1m) Code Pack
WS204 1

GASKET



For use with BS1213 pans. Fits 102 - 120mm spigots.

Code Pack
WS248 1

GASKET



Fits S252.

Code Pack
WS291 1

GOOD TO KNOW

Larger range of WC connectors in the Multikwik range on the next page



MULTIKWIK WC CONNECTORS

STRAIGHT

Selecting your WC Connector

Measure the INNER diameter of your pipe



Measure the OUTER diameter of your Spigot



Then take a look at the dimensions provided on the individual connectors to find the best matches!

LONG ADJUSTABLE STRAIGHT



Spigot 97-108mm | Pipe 99-105mm
Code Pack Box
MKLAS1 1 10

GOOD TIP

STANDARD



Spigot 108-114mm | Pipe 99-105mm

Code Pack Box
MKS1 5 30

STRAIGHT



Spigot 108-114mm | Pipe 88-92mm

Code Pack Box
MKS3 1 30

EXTENDED STRAIGHT



Spigot 97-108mm | Pipe 99-105mm

Code Pack Box
MKS4 1 30

STRAIGHT



Spigot 76-95mm | Pipe 99-105mm

Code Pack Box
MKS5 1 40

STANDARD



Spigot 97-108mm | Pipe 99-105mm

Code Pack Box
MKS2 3 36

EXTENDED STRAIGHT



Spigot 97-108mm | Pipe 88-92mm

Code Pack Box
MKS7 1 30

EXTENDED STRAIGHT



Spigot 76-95mm | Pipe 99-105mm

Code Pack Box
MKS8 1 24

STRAIGHT SIPHONIC



Spigot 108-114mm | Pipe 99-105mm

Code Pack Box
MKS1A 1 30

GOOD TO KNOW

The Multikwik MKS1 (known as the "No.1") is for old style pans only.

If you are installing a new pan always ask for the MKS2!

Make sure you know your pans

97 – 108mm Modern Pans
108 – 114mm Old Pans
76 – 96mm Stainless Steel

LONG ADJUSTABLE STRAIGHT



Spigot 97-108mm | Pipe 99-105mm

Code Pack Box
MKLAS1 1 10

STRAIGHT WITH BOSS



Spigot 97-108mm | Pipe 99-105mm

Code Pack Box
MKSB4 1 34

STRAIGHT FOR 3" SOIL



Spigot 108-114mm | Pipe 74-77mm

Code Pack Box
MKS10 1 30

MULTIKWIK WC CONNECTORS

OFFSET



Need an Offset?

Measure from the centre line of your pipe to the centre line of your pan spigot.

Remember, offsets should not be installed in an upwards position. Water should be able to run horizontally or down!

GOOD TO KNOW

18mm OFFSET



Spigot 108-114mm | Pipe 99-105mm

Code	Pack	Box
MKO1	5	30

18mm OFFSET



Spigot 97-108mm | Pipe 99-105mm

Code	Pack	Box
MKO2	1	30

18mm OFFSET



Spigot 108-114mm | Pipe 88-92mm

Code	Pack	Box
MKO3	1	30

18mm OFFSET



Spigot 76-95mm | Pipe 99-105mm

Code	Pack	Box
MKO5	1	30

18mm OFFSET



Spigot 97-108mm | Pipe 88-92mm

Code	Pack	Box
MKO7	1	30

40mm OFFSET



Spigot 97-108mm | Pipe 99-105mm

Code	Pack	Box
MKO4	1	30

MULTIKWIK WC CONNECTORS

FLEXIBLE

MULTICLIK – STRAIGHT



Extends from
225 to 550mm

- Flexible ends for excellent joint quality.
- Robust and reliable integral soil sealing fins.
- High quality Multikwik seals.
- Retains its position whatever shape is required.

Code	Pack	Box
MKC2	3	12

Spigot 97-108mm | Pipe 99-105mm.

MULTICLIK – 90° BEND



Extends from
375 to 710mm

Spigot 97-108mm | Pipe 99-105mm

Code	Pack	Box
MKC2B90	1	8

Converts a 'P' trap pan into an 'S' trap pan with adjustment and flexibility for final connection.

MULTICLIK – 90° BEND WITH BOSS



Extends from
405 to 740mm

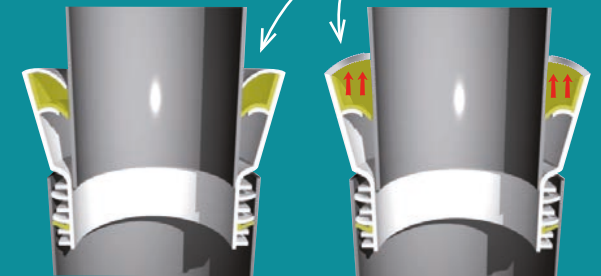
Spigot 97-108mm | Pipe 99-105mm

Code	Pack	Box
MKC2BB90	1	8

Converts a 'P' trap pan into an 'S' trap pan with adjustment and flexibility for final connection. Must be used in a vertical position if venting boss is being used

GOOD TO KNOW

Sealing Flanges



GOOD TO KNOW

Multikwik WC Connectors are made from EVA and are designed to be flexible, so don't worry if your pipe or spigot are not true.

When connecting a WC Connector to the pan spigot the sealing flanges must be pushed inside with the pipe.

Don't pull the other sealing flange out over the top of the pan spigot – it may lead to leaks!

MULTIKWIK WC CONNECTORS

BENDS

14° BEND



Spigot 97-108mm | Pipe 99-105mm

Code Pack Box

MKB114 5 30

14° BEND



Spigot 97-108mm | Pipe 105-108mm

Code Pack Box

MKB114S 1 30

14° BEND



Spigot 76-95mm | Pipe 99-105mm

Code Pack Box

MKB514 1 30

90° TIGHT KNUCKLE BEND



Spigot 108-114mm | Pipe 99-105mm

Code Pack Box

MKB21 1 20

90° TIGHT KNUCKLE BEND



Spigot 108-114mm | Pipe 105-108mm

Code Pack Box

MKB21S 1 20

90° TIGHT KNUCKLE BEND – TALL



Spigot 108-114mm | Pipe 99-105mm

Code Pack Box

MKB22 1 15

14° BEND



Spigot 76-95mm | Pipe 88-92mm

Code Pack Box

MKB614 1 30

45° KNUCKLE BEND



Spigot 97-108mm | Pipe 99-105mm

Code Pack Box

MKB45 1 25

104° BEND



Spigot 97-108mm | Pipe 99-105mm

Code Pack Box

MKB21104 1 15

90° BEND – TALL



Spigot 97-108mm | Pipe 99-105mm

Code Pack Box

MKB3190 3 15

90° BEND WITH BOSS – TALL



Spigot 97-108mm | Pipe 99-105mm

Code Pack Box

MKBB3190 1 10

Must be used in a vertical position
if venting boss is being used

90° SPACE SAVER BEND



Spigot 97-108mm | Pipe 99-105mm

Code Pack Box

MKBAR90 1 12

90° BEND



Spigot 97-108mm | Pipe 99-105mm

Code Pack Box

MKB2190 5 15

90° BEND WITH BOSS



Spigot 97-108mm | Pipe 99-105mm

Code Pack Box

MKBB2190 1 15

Must be used in a vertical position
if venting boss is being used

Quality in built...

British Standard states that a solid ball of 80mm must pass through pipework unaided.

All Multikwik Pan Connectors including those with Boss upstands meet this requirement, reducing the chance of blockage and expensive remedial costs.

GOOD TO KNOW



MULTIKWIK WC CONNECTORS

EXTENSIONS
& LINKS

SOIL PIPE EXTENSION



Pipe 99-105mm

Code Pack Box

MKEA 5 20

Used either as an extension to a Multikwik Connector or an adaptor to 4" soil pipe.

SOIL PIPE CONNECTION



Pipe 88-92mm

Code Pack Box

MKEB 5 20

Used either as an extension to a Multikwik Connector or an adaptor to 3½" soil pipe.

SOIL PIPE CONNECTION



Pipe 74-77mm

Code Pack Box

MKEG 1 20

Used either as an extension to a Multikwik Connector or an adaptor to 3" soil pipe.

FLUSH PIPE CONNECTOR



Code Pack Box

MKFPC1 1 50

Connects outside diameter 38mm flush pipe to low level or BTW WC Pan.

MULTILINK



Code Pack Box

MKL1 1 50

Sleeves the fins of 99-105mm outlet Multikwik Pan Connectors to enable connection to be made to the inlet of another.

GOOD TIP

Remember all genuine Multikwik WC Connectors are supplied with a sachet of lubricant – except for our rigid and adjustable connectors.



GOOD TO KNOW

Multilink is a unique fitting which sleeves the fins of all 99-105mm outlet Multikwik Pan Connectors.

Enabling direct connection to be made to the inlet of another Pan Connector!



MULTIKWIK WC CONNECTORS

RIGID

RIGID 18mm OFFSET



Spigot 97-108mm | Pipe 99-105mm

Code Pack Box

MKRO2 1 31

RIGID 14° BEND



Spigot 97-108mm | Pipe 99-105mm

Code Pack Box

MKRB14 1 31

RIGID 90° BEND



Spigot 97-108mm | Pipe 99-105mm

Code Pack Box

MKRB90 1 15

RIGID STRAIGHT



Spigot 97-108mm | Pipe 99-105mm

Code Pack Box

MKRS2 1 31

RIGID 100mm OFFSET



Spigot 97-108mm | Pipe 99-105mm

Code Pack Box

MKO100 1 20

RIGID SOIL PIPE EXTENSION



Spigot 97-108mm | Pipe 99-105mm

Code Pack Box

MKREXT 1 20

Strength built in...

Multikwik sanitary frames will support loads in excess of 400kg (63st) and are designed for a 25 year lifespan.

For versatility and reliability in modern bathroom design, trust the wide Multikwik sanitary systems range.

GOOD
TO KNOW



FOUNDRY FINISH SOIL

The perfect partner for Foundry Finish Rainwater. A PVC push-fit system with the good looks and charm of Cast Iron.



110mm

PIPE - SOCKETED

Code	Pack
CBS508	1

2.75 metre

SPIGOT ADAPTOR

Code	Pack
CBS121	1

Simply push into existing Cast Iron, Clay or PVC pipework.

92½° BEND

Spigot tail

Code	Pack
CBS322	1

135° BEND

Spigot tail

Code	Pack
CBS331	1

92½° BEND

Double socket

Code	Pack
CBS671	1

135° BEND

Double socket

Code	Pack
CBS676	1

92½° BRANCH

Code	Pack
CBS334	1

BOSS PIPE

Code	Pack
CBS244	1

ACCESS SADDLE

Code	Pack
CBS337	1

PIPE SUPPORT BRACKET

2 screw fixing

Code	Pack
CBS219	1

PIPE SOCKET BRACKET

2 screw fixing

Code	Pack
CBS220	1

FITTING SOCKET BRACKET

2 screw fixing

Code	Pack
CBS572	1

VENT COWL

Code	Pack
CBSV42	1

COACH BOLTS FIXINGS

Pack of 10

M6 45mm length

Code	Pack
CBF001	10

GOOD TO KNOW

WE ALSO DO FOUNDRY FINISH RAINWATER SYSTEMS p23-27

B BLACK

Each product code is prefixed with a colour.
Example BR125, where 'B' = BLACK

PUSH-FIT WASTE

POLYPROPYLENE WASTE SYSTEM

Manufactured from double polypropylene material, Hunter Push-fit Waste is resistant to most chemicals and detergents.



32mm

40mm

50mm

PIPE – PLAIN ENDED



P	Code	Pack
32mm (3m)	GP125	10
	BP125	10
	WP125	10
40mm (3m)	GP150	10
	BP150	10
	WP150	10
50mm (3m)	GP250	10

92½° SWEPT BEND



P	Code	Pack
32mm	GP010	10
	BP010	10
	WP010	10
40mm	GP020	10
	BP020	10
	WP020	10
50mm	GP200	10

135° SWEPT BEND



P	Code	Pack
32mm	GP011	10
	BP011	10
	WP011	10
40mm	GP021	10
	BP021	10
	WP021	10
50mm	GP201	10

91.5° KNUCKLE BEND



P	Code	Pack
32mm	GP017	10
	BP017	10
	WP017	10
40mm	GP027	10
	BP027	10
	WP027	10
50mm	GP207	10

135° SPIGOT BEND



P	Code	Pack
32mm	GP061	10
	BP061	10
	WP061	10
40mm	GP071	10
	BP071	10
	WP071	10

90° LONG TAIL SPIGOT BEND



P	Code	Pack
32mm	GP019	10
	BP019	10
	WP019	10
40mm	GP029	10
	BP029	10
	WP029	10
50mm	GP209	10

COUPLING



P	Code	Pack
32mm	GP012	10
	BP012	10
	WP012	10
40mm	GP022	10
	BP022	10
	WP022	10
50mm	GP202	10

92½° SWEPT TEE



P	Code	Pack
32mm	GP013	10
	BP013	10
	WP013	10
40mm	GP023	10
	BP023	10
	WP023	10
50mm	GP203	10

SOCKET PLUG



P	Code	Pack
32mm	GP014	10
	BP014	10
	WP014	10
40mm	GP024	10
	BP024	10
	WP024	10
50mm	GP204	10

REDUCER



P	Code	Pack
40x32mm	GP025	10
	BP025	10
	WP025	10
50x32mm	GP208	10
50x40mm	GP205	10

BRACKET



P	S	Code	Pack
32mm		GW118	10
		BW118	10
		WW118	10
40mm		GW119	10
		BW119	10
		WW119	10
50mm		GP210	10

BOSS ADAPTOR

For Push-fit and Solvent Pipe.



Compatible with upstand and flat snap cap fittings

P	S	Code	Pack
32mm		GW058	10
40mm		GW059	10

ADAPTOR – PUSH-FIT ONLY



Compatible with flat snap cap fittings.
Converts solvent to push-fit.

P	Code	Pack
50mm	GS751	10
50mm	BS751	10

UNIVERSAL TANK CONNECTOR



Accepts Push-fit & Solvent Pipes.

P	S	Code	Pack
32mm		GW098	10
40mm		GW099	10
		WW099	10

Sizes shown are nominal. Actual pipe sizes are 34mm, 41mm and 54mm.

SOLVENT WASTE

PVCc/PVC-U WASTE SYSTEM

32mm

40mm

50mm

The system of choice for the pro plumbing installer, once welded the high performance pipework provides a permanent watertight connection.



PIPE



S	Code	Pack
32mm (3m)	GW538	10
	BW538	10
	WW538	10
32mm (4m)	GW541	10
	BW541	10
	WW541	10
40mm (3m)	GW539	10
	BW539	10
	WW539	10
40mm (4m)	GW542	10
	BW542	10
	WW542	10
50mm (3m)	GW709	10
	BW709	10
	WW709	10
50mm (4m)	GW710	10
	BW710	10
	WW710	10

STRAIGHT COUPLING



S	Code	Pack
32mm	GW060	10
	BW060	10
	WW060	10
40mm	GW061	10
	BW061	10
	WW061	10
50mm	GW711	10
	BW711	10
	WW711	10

GOOD TO KNOW

All products are manufactured to BS EN 1566 (or in thick wall PVC-u as applicable). Hunter Solvent Waste should not be used as a high temperature gas boiler exhaust system.

EXPANSION COUPLING



P	S	Code	Pack
40mm	GW064	10	
	WW064	10	

BRACKET



P	S	Code	Pack
32mm	GW118	10	
	BW118	10	
	WW118	10	
40mm	GW119	10	
	BW119	10	
	WW119	10	
50mm	GW716	10	
	BW716	10	
	WW716	10	

92½° LONG TAIL SPIGOT BEND



S	Code	Pack
32mm	WW113	10
	GW113	10
	BW113	10
40mm	WW114	10
	GW114	10
	BW114	10
50mm	WW115	10
	GW115	10
	BW115	10

91½° SWEPT BEND



S	Code	Pack
32mm	GW078	10
	BW078	10
	WW078	10
40mm	GW079	10
	BW079	10
	WW079	10
50mm	GW712	10
	BW712	10
	WW712	10

135° SWEPT BEND



S	Code	Pack
32mm	GW082	10
	BW082	10
	WW082	10
40mm	GW081	10
	BW081	10
	WW081	10
50mm	GW713	10
	BW713	10
	WW713	10

OPEN BRACKET



S	Code	Pack
50mm	WW122	20

90° KNUCKLE BEND



S	Code	Pack
32mm	GW116	10
	BW116	10
	WW116	10
40mm	GW117	10
	BW117	10
	WW117	10
50mm*	GW719	10
	BW719	10
	WW719	10

*Adaptor only

135° SPIGOT TAIL BEND



S	Code	Pack
32mm	GW108	10
	BW108	10
	WW108	10
40mm	GW109	10
	BW109	10
	WW109	10
50mm	WW110	10
	GW110	10
	BW110	10

Sizes shown are nominal. Actual pipe sizes are 36mm, 43mm and 56mm.

SOLVENT WASTE

PVCc/PVCu
32/40/50mm
WASTE SYSTEM

32mm

40mm

50mm

91½° TEE

Triple socket



S Code Pack

32mm	GW084	10
	BW084	10
	WW084	10
40mm	GW085	10
	BW085	10
	WW085	10
50mm	GW714	10
	BW714	10
	WW714	10

135° TEE

Triple socket



S Code Pack

40mm	GW088	10
	BW088	10
	WW088	10
50mm	GW715	10
	BW715	10
	WW715	10

91½° CROSS



S Code Pack

40mm	GW574	10
	WW574	10
50mm	WW722	10

CONNECTOR

Male Iron BSP Adaptor



S Code Pack

32mm	WW125	10
40mm	WW126	10
50mm	WW723	10

UNIVERSAL TANK CONNECTOR



P S Code Pack

32mm	GW098	10
	WW099	10
40mm	GW099	10
	WW099	10

VENT COWL



S Code Pack

50mm	GS353	10
------	-------	----

ACCESS CAP

Spigot tail



S Code Pack

32mm	GW090	10
	BW090	10
	WW090	10
40mm	GW091	10
	BW091	10
	WW091	10
50mm	GW724	10
	BW724	10
	WW724	10

REDUCER

Socket to pipe



S Code Pack

32x22mm	BW055	10
	WW055	10
40x22mm	BW056	10
	WW056	10
40x32mm	GW057	10
	BW057	10
	WW057	10
50x32mm	GW717	10
	BW717	10
	WW717	10
50x40mm	GW718	10
	BW718	10
	WW718	10



Each product code is prefixed with a colour.
Example BR125, where 'B' = BLACK

SOIL/WASTE FITTINGS GUIDE

- P** Push-fit fittings
- S** Solvent fittings
- P S** Push-fit AND Solvent fittings

90° BOSS ADAPTOR

For waste manifold (GS200 only)



S Code Pack

32mm	use W104 + W113
40mm	use W106 + W114
50mm	GW725 10

BOSS ADAPTOR

For Push-fit & Solvent Pipe



Compatible with flat and upstand snap cap fittings

P S Code Pack

32mm	GW058	10
	WW059	10
40mm	GW059	10

Product is black.

BOSS ADAPTOR – PUSH-FIT ONLY



Compatible with upstand snap cap fittings

P Code Pack

50mm	GS759	10
------	-------	----

BOSS ADAPTOR – PUSH-FIT ONLY



Compatible with flat snap cap fittings
Converts solvent to push-fit

P Code Pack

50mm	GS751	10
50mm	BS751	10

BOSS ADAPTOR



Compatible with upstand snap cap fittings

S Code Pack

32mm	GW105	10
	BW105	10
	WW105	10
40mm	GW107	10
	BW107	10
	WW107	10
50mm	GS758	10
	BS758	10
	WS758	10

CUTTER GUIDE

Wondering what size hole cutter you need?

48mm for Closed Bosses
57mm for the Easy Boss
57mm for the Strap-On Boss

GOOD TO KNOW

SOLVENT WASTE

ABS
32/40/50mm
WASTE SYSTEM

32mm

40mm

50mm

PIPE



S	Code	Pack
32mm (3m)	WAP33	10
40mm (3m)	WAP43	10
50mm (3m)	WAP53	5

STRAIGHT COUPLINGS



S	Code	Pack
32mm	WAC3	10
40mm	WAC4	10
50mm	WAC5	10

STRAIGHT COUPLINGS



S	Code	Pack
32mm	WAC31	10
40mm	WAC41	10
50mm	KEC3*	10

Expansion/copper adaptor.
*Material is PVC.

90° BEND



S	Code	Pack
32mm	WAB34	10
40mm	WAB44	10
50mm	WAB54	10

Spigot/socket

ACCESS PLUG



S	Code	Pack
32mm	WAA3	10
40mm	WAA4	10
50mm	WAA5	10

88½° TEE



S	Code	Pack
32mm	WAT3	10
40mm	WAT4	10
50mm	WAT5	10

CLIPS - OPEN PVCU



S	Code	Pack
32mm	KF1	10
40mm	KF2	10
50mm	KF3	10

Open PVCu

CLIPS - SADDLE ABS



S	Code	Pack
32mm	WC3	10
40mm	WC4	10
50mm	WC5	80

Saddle ABS

88½° BEND



S	Code	Pack
32mm	WAB3	10
40mm	WAB4	10
50mm	WAB5	10

45° TEE



S	Code	Pack
32mm	WAT31	10
40mm	WAT41	10
50mm	WAT51	10

88½° CROSS TEE



S	Code	Pack
40mm	WAT42	10
50mm	WAT52	10

SOCKET REDUCERS



S	Code	Pack
40-32mm	WAR43	10
50-32mm	WAR53	10
50-40mm	WAR54	10

45° BEND



S	Code	Pack
32mm	WAB31	10
40mm	WAB41	10
50mm	WAB51	10

Double socket

45° BEND



S	Code	Pack
32mm	WAB32	10
40mm	WAB42	10

Socket/spigot

90° BEND



S	Code	Pack
32mm	WAB33	10
40mm	WAB43	10

Knuckle bend

FEMALE IRON ADAPTORS



S	Code	Pack
32mm	WAF3	10
40mm	WAF4	10
50mm	WAF5	10

MALE IRON ADAPTORS



S	Code	Pack
32mm	WAM3	10
40mm	WAM4	10
50mm	WAM5	10

CAP AND LINING



S	Code	Pack
32mm	WAM31	10



Each product code is suffixed with a colour. Example WAP33B, where 'B' = BLACK. Please visit our website for all colour options.

OVERFLOW

22mm
OVERFLOW
SYSTEM

Hunter Overflow has a 22mm full bore discharge for efficient flow removal. Dual purpose fittings offer push-fit or solvent weld assembly.



22mm

PIPE – PUSH-FIT ONLY



P Code Pack
22mm (3m) WO247 10

PIPE – SOLVENT ONLY



S Code Pack
22mm (3m) WO232 10

UNIVERSAL ADAPTOR



Product is grey.
Connect to other Push fit and Solvent Weld system
P S Code Pack
22mm WO220 10

STRAIGHT COUPLING



P S Code Pack
22mm WO221 10

90° BEND



P S Code Pack
22mm WO222 10

135° BEND



P S Code Pack
22mm WO223 10

90° TEE



P S Code Pack
22mm WO224 10

STRAIGHT TANK CONNECTOR



P S Code Pack
22mm WO225 10

90° TANK CONNECTOR



P S Code Pack
22mm WO226 10

CLIP



P S Code Pack
22mm WO245 10

REDUCING BUSH



P Code Pack
32x22mm BO233 10
WO233 10

REDUCER



S Code Pack
32x22mm BW055 10
WW055 10

40x22mm CONDENSE ADAPTOR



• Adapts to condensate line.
• Fits most sizes of overflow.

Code Pack
40mm EB40R 1

SOIL/WASTE FITTINGS GUIDE

- P** Push-fit fittings
- S** Solvent fittings

B BLACK **W** WHITE
Each product code is prefixed with a colour.
Example BR125, where 'B' = BLACK

ANCILLARIES

LUBRICANT



Code Pack

30ml	SC960	1
250ml	SC966	1

SILICONE SPRAY



Code Pack

400ml	SC967	1
-------	-------	---

SOLVENT CLEANER



Code Pack

250ml	SC951	1
-------	-------	---

SOLVENT CEMENT



BS EN ISO 14680 for PVC.

Code Pack

125ml	SC953	1
250ml	SC954	1

UNIVERSAL SILICONE LUBRICANT

We all know lubricant makes installations easier but this makes it even easier still with a built in sponge applicator.



Code Pack

50ml	SC961	1
------	-------	---



**IF YOU NEED THEM,
COSH H DATASHEETS
ARE AVAILABLE TO
DOWNLOAD FROM
HUNTERPLASTICS.CO.UK**

A BREATH OF FRESH AIR



AN AIR ADMITTANCE VALVE YOU CAN SEE WORKING



Prevents the release of foul air

Allows your soil stack to be terminated internally

Provides simple rodding access

Can be used as an air test point



Removable diaphragm mechanism for easy maintenance

Can serve up to five storeys

COMPRESSION WASTE

32mm
40mm

MULTIFLEX BEND



Instantly adjustable from 0 – 90° to meet the demands of almost any installation

	Code	Pack	Box
32mm	MFW32	1	50
40mm	MFW40	1	50

40x22mm CONDENSE ADAPTOR



Adapts to condense line
Fits most sizes of overflow

	Code	Pack
40mm	EB40R	1

REDUCER



	Code	Pack	Box
40/32mm	WP124	10	200
50/40mm	WP225	1	130

STRAIGHT COUPLING



	Code	Pack	Box
32mm	WP114	10	280
40mm	WP115	10	220
50mm	WP216	1	90

90° BEND



	Code	Pack	Box
32mm	WP120	10	200
40mm	WP121	10	150
50mm	WP222	1	112

135° BEND



	Code	Pack	Box
32mm	WP126	10	230
40mm	WP127	10	180
50mm	WP218	1	70

92½° TEE



	Code	Pack	Box
32mm	WP128	10	120
40mm	WP129	10	80
50mm	WP230	1	80

GOOD TO KNOW

Our compression range is available in 32mm, 40mm & 50mm with coloured slip rings for easy identification.

COMPRESSION WASTE

32mm
40mm
50mm

400mm PIPE



	Code	Pack
32mm	WP101C	1
40mm	WP102C	1

1.1m PIPE



	Code	Pack
32mm	WP105C	1
40mm	WP106C	1

STRAIGHT COUPLING



	Code	Pack
32mm	WP114C	1
40mm	WP115C	1

PIPE CLIP



	Code	Pack
32mm	WP141C	3
40mm	WP142C	3

90° BEND



	Code	Pack
32mm	WP120C	1
40mm	WP121C	1

92½° TEE



	Code	Pack
40mm	WP129C	1

PIPE COVER



	Code	Pack
32mm	WP153C	1
40mm	WP154C	1

GOOD TO KNOW

For a 'Fit & Forget' job, the thumb recesses make it easy to tighten the joint – even with wet hands!



COMPRESSION WASTE

32mm
40mm

400mm PIPE



C	Code	Pack
32mm	WP101C	1
40mm	WP102C	1

1.1m PIPE



C	Code	Pack
32mm	WP105C	1
40mm	WP106C	1

STRAIGHT COUPLING



C	Code	Pack
32mm	WP114C	1
40mm	WP115C	1

PIPE CLIP



C	Code	Pack
32mm	WP141C	3
40mm	WP142C	3

90° BEND



C	Code	Pack
32mm	WP120C	1
40mm	WP121C	1

92½° TEE



C	Code	Pack
40mm	WP129C	1

PIPE COVER



C	Code	Pack
32mm	WP153C	1
40mm	WP154C	1

GOOD TO KNOW

For a 'Fit & Forget' job, the thumb recesses make it easy to tighten the joint – even with wet hands!



EASY BOSS

A Simple Connection

From 32mm or 40mm Push-fit or Solvent Weld pipe to anywhere in your 110mm soil stack!
There's no straps which makes it ideal for limited access installations.
And it's installed in 6 really easy steps.

110mm EASY BOSS



	Code	Pack	Box
Grey	MKEB4032G	1	30
Black	MKEB4032B	1	30



1. Drill a 57mm hole



2. Ensure seal is in position



3. Insert Easy Boss into hole



4. Twist in the Easy Boss connector



5. Use a strap wrench and hand tighten

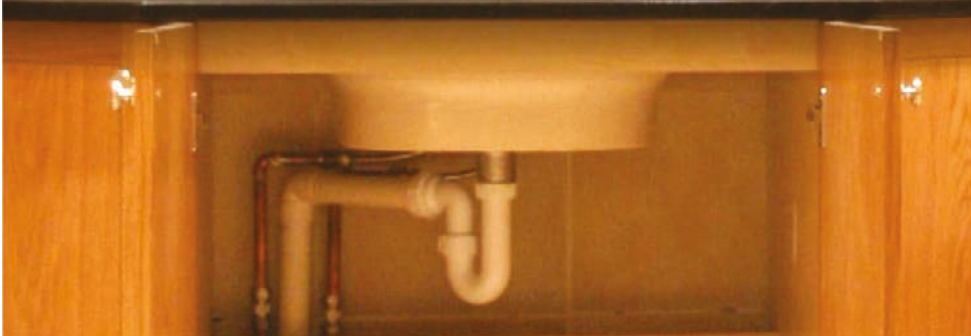


6. Insert the pipe

TRAPS

BOTTLE & UNIVERSAL 32mm/40mm

Multikwik traps are designed to offer a secure watertight joint and can help you achieve a **GOOD** 'fuss free' installation.



32mm

40mm

50mm

BOTTLE - SLIMLINE



Space saving for vanity unit.

	Code	Pack	Box
32mm	BS032	5	40

STRAIGHT THROUGH TRAP



- Slimline design.
- Adjustable telescopic outlet.
- Easy assembly and disassembly for maintenance after installation.
- Designed to reduce flow variations and help retain water seal.
- Offers similar performance to Anti-Vac traps.

	Code	Pack	Box
32mm	ST032	10	40

BOTTLE - STANDARD



	Code	Pack	Box
32mm	B032	10	50
40mm	B040	10	40

BOTTLE - RESEALING



	Code	Pack	Box
32mm	B032R	10	50
40mm	B040R	10	40

BOTTLE - ADJUSTABLE



	Code	Pack	Box
32mm	B032A	10	40
40mm	B040A	10	40

BOTTLE - ADJUSTABLE/RESEAL



	Code	Pack	Box
32mm	B032RACR	1	40
40mm	B040RACR	1	40

BOTTLE - ADJUSTABLE



Includes 400 x 32mm chromed waste pipe

	Code	Pack	Box
32mm	B032ACR	1	20

UNIVERSAL ALL-IN-ONE



Outlet adjusts 360°

	Code	Pack	Box
32mm	SP032	10	50

BOTTLE - ADJUSTABLE/RESEAL



	Code	Pack	Box
32mm	B032RA	5	40
40mm	B040RA	5	30

BOTTLE - ANTI VAC



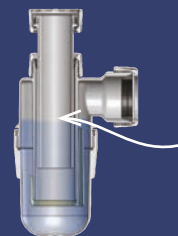
	Code	Pack	Box
32mm	B032V	10	50
40mm	B040V	10	50

BOTTLE - COMPACT



	Code	Pack	Box
32mm	B032S	5	65
40mm	B040S	5	50

GOOD TO KNOW



Water seal

BS EN 12056-2:2000 states that traps which discharge to a soil stack should have a 75mm seal.

This is not always possible directly at the outlet due to size restrictions, so other seal depths can be installed...

- **50mm water seal** can be fitted to baths, shower trays & basins without plugs and having spray taps.
- **38mm water seal** can be used on ground floors when connecting to flat bottomed appliances that discharge to a back inlet gully.

All our traps have 75mm Seals unless otherwise stated.

TRAPS

RUNNING & SHOWER 32mm/40mm/50mm

32mm

40mm

50mm

TUBULAR SWIVEL TRAP



- Both inlet and outlet swivel to allow an easy connection, even in confined areas.
- Telescopic inlet for maximum adjustment.

	Code	Pack	Box
40mm	SWM040A	5	40

Use NKT001 nozzle for appliance connection.

P TRAP



	Code	Pack	Box
32mm	P032	10	60
40mm	P040	10	40
50mm	P050	5	50

COMPACT SHOWER TRAP



70mm Flange

	Code	Pack	Box
40mm	S5040C	10	40

COMPACT SHOWER TRAP



70mm Flange

	Code	Pack	Box
40mm	S5040W	10	40

RUNNING S TRAP



	Code	Pack	Box
32mm	S032	10	60
40mm	S040	10	40

RUNNING



	Code	Pack	Box
32mm	RP032	5	50
40mm	RP040	5	35
50mm	RP050X	5	40

ADJUSTABLE TRAP



	Code	Pack	Box
32mm	P032A	10	50
40mm	P040A	10	40

SHALLOW SHOWER TRAP



70mm Flange

	Code	Pack	Box
40mm	S5040CD	5	40

SHALLOW SHOWER TRAP



115mm Flange

	Code	Pack	Box
40mm	S9040CD	5	40

COLOUR

- W** White
- C** Chrome

WATER SEAL

- 99** Water seal size

Note: All our traps have 75mm Water Seals unless otherwise stated.

GOOD TO KNOW

To save time on site all Multikwik traps have unique slip ring colours to aid size identification

32mm – Suitable for hand basins, bidets, bar wells and drinking fountains

40mm – Suitable for baths, showers, sinks, urinals and kitchen appliances

50mm – Suitable for a range of basins, urinals, catering sinks and hospital appliances.

GOOD TO KNOW

All 40mm shower traps are supplied with an access key for installation, easy cleaning and maintenance



TRAPS

BATH, UTILITY & VENTILATION 40mm

32mm

40mm

50mm

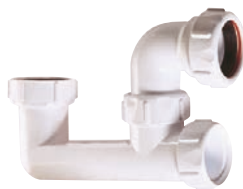
LOW LEVEL BATH TRAP



For ground floor appliances which discharge into a gully

19	Code	Pack	Box
40mm	P1940	10	80

LOW LEVEL BATH TRAP



50	Code	Pack	Box
40mm	P5040	10	40

LOW LEVEL BATH TRAP



50	Code	Pack	Box
40mm	P5040F	1	20

WASHING MACHINE TRAP



With 500mm standpipe and retaining clips

Code	Pack	Box
40mm PWM040	5	30

P SINGLE UTILITY COMPACT TEE



Code	Pack	Box
40mm PWM040T	10	60

P SINGLE UTILITY NOZZLE



Adjustable

Code	Pack	Box
40mm PWM040S	10	30

LOW LEVEL SWIVEL P BATH TRAP



Code	Pack	Box
40mm P040L	5	40

STANDARD BATH TRAP



60	Code	Pack	Box
40mm P6040	5	35	

STANDARD BATH TRAP



60	Code	Pack	Box
40mm P6040F	5	40	

P DOUBLE UTILITY NOZZLE



Adjustable

Code	Pack	Box
40mm PWM040D	10	40

S SINGLE UTILITY NOZZLE



Adjustable

Code	Pack	Box
40mm SWM040S	10	30

S DOUBLE UTILITY NOZZLE



Adjustable

Code	Pack	Box
40mm SWM040D	5	25

LOW LEVEL ANTI-VAC BATH TRAP



50	Code	Pack	Box
40mm P5040V	5	80	

GURGLE MASTER



- Converts any trap into an anti-vac trap
- Allows air into the waste pipes to prevent the gurgling of the water seal.
- Simple multifit inline assembly for quick installation.
- Install within 150mm of the trap

Code	Pack	Box
32mm WV032	10	150
40mm WV040	10	100

ANTI SIPHON UNIT



Code	Pack	Box
32mm WW150	10	100
40mm WW151	10	100

Use with any BS 5255 / BS EN 1566 solvent weld socket

GOOD TO KNOW

Part H of Building Regs requires ventilation of a soil stack to prevent water seals being drawn.

Multikwik offers a number of unique and innovative solutions for ventilation of drainage systems.

Plus there's an Air Admittance Valve in the Hunter range p60



TRAPS

SPACE-SAVER, BOWL & ACCESSORIES 40mm

32mm

40mm

50mm

SPACE SAVER



- Pushes the trap and pipework to the back of the cupboard
- Maximise under-sink storage space
- Trap supplied separately
- 50mm seal depth

	Code	Pack	Box
40mm	SBSK040	5	30

SPACE SAVER KIT



Single bowl – double nozzle

	Code	Pack	Box
40mm	SBK040D	1	25

NOZZLE



Spigot suits 1" and 3/4" hose connection. Blanking cap provided – must be removed when connecting appliance. Non return valve to prevent backflow

	Code	Pack	Box
40mm	NK001	10	300

STRAIGHT NOZZLE



Code Pack Box

40mm	NKT001	10	180
------	--------	----	-----

Use with 40mm compression waste appliance hose connection.

1½ BOWL KIT



1½ bowl – single nozzle

	Code	Pack	Box
40mm	XSB040S	1	35

DOUBLE BOWL KIT



Double bowl – single nozzle

	Code	Pack	Box
40mm	DBK040S	1	30

EXTENDED DOUBLE BOWL KIT



Double bowl – double nozzle

	Code	Pack	Box
40mm	DBKDS040	1	25

HEIGHT ADJUSTER



Single nozzle

	Code	Pack	Box
40mm	WA040S	5	90

WASHING MACHINE TEE



Code Pack Box

40mm	WMT001	1	100
------	--------	---	-----

Can be inserted between existing trap and waste outlet.

GOOD TO KNOW

Multikwik Nozzles allow a simple connection for washing machines and dishwashers.

The spigot can be cut back to provide a 3/4" BSPT male thread.

And they're supplied with a blanking cap and non return valve to prevent the backflow of water.



Remember to remove the blanking plug when you connect your appliance!

Ultimate Flexibility...

Adjustable on both the risers, the tee section and between sink connections, the DBKDS040 gets you out of trouble everytime!

GOOD TO KNOW



32-40mm FLEXIBLE CONNECTOR



Length 350mm

	Code	Pack	Box
40mm	WW170	1	1

Not suitable for solvent weld.

1.5M WASHING MACHINE HOSE



Non kink hose with support rest supplied

	Code	Pack	Box
40mm	WW171	1	1

Must be fitted in accordance with the appliance manufacturers guidelines.

TRAPS

COMBINED WASTE/OVERFLOW 32mm/40mm

BATH WASTE AND OVERFLOW



Code Pack Box

40mm CWB01 1 20

BATH WASTE AND OVERFLOW



'Plug tidy' overflow

Code Pack Box

40mm W040F 5 40

BATH WASTE AND OVERFLOW



Includes pop up waste

Code Pack Box

40mm WPU040C 1 5

SINK WASTE AND OVERFLOW



Code Pack Box

40mm CWS01 1 20

SINK WASTE AND OVERFLOW



Code Pack Box

40mm W4070RF 5 40

SLOTTED BASIN WASTE OUTLET



Includes polyplug and chain

Code Pack Box

32mm SBW01 1 40

GOOD TO KNOW

Wondering about the Plug Tidy Overflow feature?

Well it retains the plug when the bath is not in use.



FLOOR DRAINAGE

LINNUM SHOWER DRAIN BODY*



Body Only

Code Pack Box

650mm L13560 1 1

750mm L13570 1 1

950mm L13590 1 1

For tiled flooring

LINNUM SOFT FLOOR GRATE*



Code Pack Box

650mm L13565 1 1

750mm L13575 1 1

950mm L13595 1 1

LINNUM FLOOR GRATE*



Elegance

Code Pack Box

650mm L13566 1 1

950mm L13596 1 1

LINNUM FLOOR GRATE*



Bubble

Code Pack Box

950mm L13599 1 1

LINNUM SHOWER GRID FRAME*



Stainless steel

Code Pack Box

950mm TRL430 1 1

LINNUM SHOWER CLAMPING FRAME*



Use with TRL478

Plastic

Code Pack Box

950mm TRL436 1 1

CONTINUOUS CHANNEL*



Tiled flooring only
Stainless steel cover

Code Pack Box

500mm L29142 1 1

CONTINUOUS CHANNEL*



Stainless steel cover
Vertical outlet (Ø50mm)
Horizontal outlet (Ø40mm)

Code Pack Box

150mm L29158 1 1

*Linnum and continuous drainage, for tiled floors only.

FLOOR DRAINAGE

HORIZONTAL SHOWER GULLY*



Seal depth: SG50WHV 50mm
SG75WHV 75mm

Code	Pack	Box
------	------	-----

ABS	SG50WHV	1	1
ABS	SG75WHV	1	1

HORIZONTAL SHOWER GULLY*



Seal depth: SG50SHV 50mm
SG75SHV 75mm

Code	Pack	Box
------	------	-----

St/st	SG50SHV	1	1
St/st	SG75SHV	1	1

VERTICAL SHOWER GULLY*



Seal depth: SG50WVV 50mm
SG75WVV 75mm

Code	Pack	Box
------	------	-----

ABS	SG50WVV	1	1
ABS	SG75WVV	1	1

VERTICAL SHOWER GULLY*



Seal depth: SG50SVV 50mm
SG75SVV 75mm

Code	Pack	Box
------	------	-----

St/st	SG50SVV	1	1
St/st	SG75SVV	1	1

GOOD TO KNOW

Make your installation easier and quicker with the Trapped Shower Gullies for vinyl flooring:

1. Compact
One of the most compact gullies on the market
2. Adaptable
ABS anti-slip or stainless steel lid, horizontal or vertical outlet, 50mm or 75mm seal depth and outlet options of 40mm, 50mm or 110mm – the choice is yours!
3. Secure
Unique locking ring system – for more security!

HORIZONTAL SHOWER OUTLET

Tiled flooring



Body Only

Code	Pack	Box
------	------	-----

50mm	SG50HT	1	1
75mm	SG75HT	1	1

DUAL GRATE & RISER



Code	Pack	Box
------	------	-----

SG1T	1	1
------	---	---

VERTICAL SHOWER GULLY

Tiled flooring



Body Only

Code	Pack	Box
------	------	-----

50mm	SG50VT	1	1
75mm	SG75VT	1	1

SQUARE GRATE & RISER



Code	Pack	Box
------	------	-----

SG2T	1	1
------	---	---

CLASSIC GRATE & RISER



Code	Pack	Box
------	------	-----

SG3T	1	1
------	---	---

ANTI-VANDAL GRATE & RISER

Vandal resistant



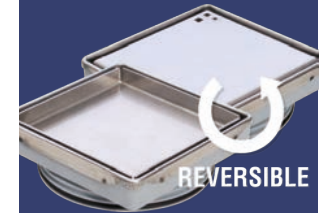
Code	Pack	Box
------	------	-----

SG4T	1	1
------	---	---

GOOD TO KNOW

Mix and match your shower gullies for tiled flooring:

Pick from one of four gully body options and choose a grate and riser set to match your bathroom style.



REVERSIBLE

SG1T – Two-in-one dual grate



SG4T – Anti-vandal grate

ENDURA

GREASE MANAGEMENT SYSTEM

Endura is a high quality Grease Management system designed to protect your drains from blocking, by trapping and storing grease.

It is one of the easiest and most cost-effective solutions to grease management, allowing you to comply with Part H of the Building Regulations.

moulded. strong. EFFECTIVE



ENDURA GREASE INTERCEPTOR



1.6l: W=600mm H=414mm D=445mm
3.2l: W=783mm H=445mm D=597mm

	Code	Pack
1.6 l/s	DSG16	1
3.2 l/s	DSG32	1

ENDURA INLET REDUCER

110x50mm



Code Pack

DSG07 1

Flexible rubber – will accommodate 56mm diameter pipework.

110mm FLEXIBLE ADAPTOR



Code Pack

110mm DS028 1

ENDURA BIOPAK



Code Pack

DSG10 1

Supplied complete with stainless steel enclosure, 5L Bio-G, programmable dosing pump and all fittings required to install.

ENDURA BIO-G – BIOPAK REFILL



3 months supply

Liquid Grease Digester – BioPak use only.

Code Pack

12.5l DSG12 1

ENDURA BIO+



4 months supply

Granular Grease Digester – non automated.

Code Pack

4 x 1kg DSG11 1

Drain...

Pipes

p105

Couplings

p106

Bends

p107

Junctions

p109

Adaptors & Connectors

p110

Access Fittings

p111

Non-Return Valve

p111

Bottle Gullies

p112

Hoppers

p113

Chambers...

Inspection

p115

Shallow Access

p116

Adoptable Inspection Chamber System

p117

Structured Wall...

Deep Inspection

p119

Flowloc

p120

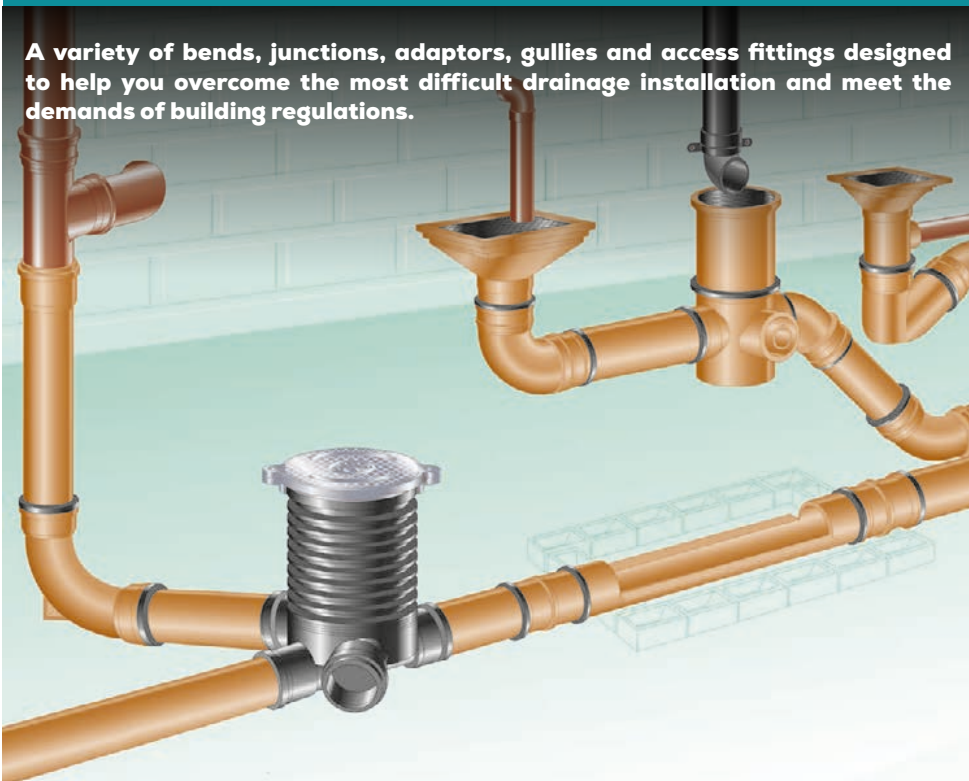
Quantum

p123

110mm/160mm/200mm DRAINAGE SYSTEMS

PIPES

A variety of bends, junctions, adaptors, gullies and access fittings designed to help you overcome the most difficult drainage installation and meet the demands of building regulations.



For illustrative purposes only

PIPE



	Code	Pack
110mm (3m)	DS505	1
110mm (6m)	DS544	1
160mm (3m)	DS534	1
160mm (6m)	DS545	1
200mm (6m)	DS744	1

Frame Qty: 110mm – 100 | 160mm – 46.

SOCKETED PIPE



	Code	Pack
110mm (3m)	DS508	1
110mm (6m)	DS549	1
160mm (3m)	DS548	1
160mm (6m)	DS550	1

Frame Qty: 110mm – 100 | 160mm – 46.

SOCKETED LAND DRAINAGE PIPE



	Code	Pack
110mm (6m)	DS546	1
160mm (6m)	DS547	1

Frame Qty: 110mm – 100 | 160mm – 46.

110mm/160mm/200mm DRAINAGE SYSTEMS

SOCKETS & BENDS

SINGLE SOCKET



	Code	Pack
110mm	DS208	1
160mm	DS406	1
200mm	DS729	1

DOUBLE SOCKET



	Code	Pack
110mm	DS211	1
160mm	DS409	1
200mm	DS730	1

SLIP COUPLING



	Code	Pack
110mm	DS212	1
160mm	DS410	1

No internal stop.

10° BEND

Spigot tail



	Code	Pack
110mm	DS697	1

10° BEND

Double socket



	Code	Pack
110mm	DS673	1

15° BEND

Spigot tail



	Code	Pack
160mm	DS408	1
200mm	DS728	1

20° BEND

Spigot tail



	Code	Pack
110mm	DS696	1

20° BEND

Double socket



	Code	Pack
110mm	DS674	1

30° BEND

Spigot tail



	Code	Pack
110mm	DS318	1
160mm	DS418	1
200mm	DS733	1

Images for 200mm sizes may vary from those shown

BENDS

110mm/160mm/200mm DRAINAGE SYSTEMS

110mm

160mm

200mm

30° BEND

Double socket



Code Pack

110mm	DS675	1
-------	-------	---

45° BEND

Spigot tail



Code Pack

110mm	DS331	1
160mm	DS404	1

45° BEND

Double socket



Code Pack

110mm	DS676	1
160mm	DS432	1
200mm*	DS732	1

*Single socketed

87½° 200mm LONG RADIUS BEND



Code Pack

110mm	DS554	1
-------	-------	---

87½° 456mm LONG RADIUS BEND



Code Pack

110mm	DS555	1
-------	-------	---

87½° 686mm LONG RADIUS BEND



Code Pack

160mm	DS556	1
-------	-------	---

87½° BEND

Spigot tail



Code Pack

110mm	DS322	1
160mm	DS403	1
200mm	DS731	1

87½° BEND

Double socket



Code Pack

110mm	DS671	1
160mm	DS431	1

ADJUSTABLE BEND

Spigot tail



Adjusts from 5° - 30°

Code Pack

110mm	DS329	1
-------	-------	---

45° 456mm LONG RADIUS BEND



Code Pack

110mm	DS557	1
-------	-------	---

MULTIFLEX BEND

Spigot tail



Adjusts from 0° - 90°

Code Pack

110mm	MFBSO	1
-------	-------	---

MULTIFLEX BEND

Double socket



Adjusts from 0° - 90°

Code Pack

110mm	MFBD0	1
-------	-------	---

87½° REST BEND

Double socket



Code Pack

110mm	DS663	1
-------	-------	---

45° 686mm LONG RADIUS BEND

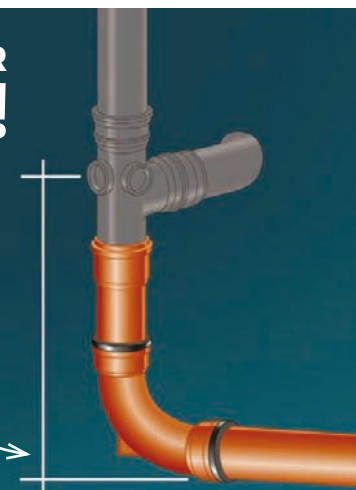


Code Pack

160mm	DS558	1
-------	-------	---

PROTECT YOUR STACK!

Always make sure the lowest branch of your soil stack is the right distance away from the invert of your drain.



Height	Min. Vertical	Solution
Up to 3 storeys	450mm	1 x DS663
Up to 5 storeys	740mm	2 x DS676 & a piece of pipe

Psst... Going even taller than 5 storeys?

Connect the ground floor into their own soil stack or make connections direct to drain. If you get to 20 storeys you'll need to do this for the first floor too!

GOOD TO KNOW

110mm/160mm/200mm
DRAINAGE SYSTEMS

JUNCTIONS

45° JUNCTION

Double socket



Code Pack

110mm	DS278	1
160mm	DS430	1
200mm	DS734	1

45° JUNCTION

Triple socket



Code Pack

110mm	DS678	1
160mm	DS428	1

45° UNEQUAL JUNCTION

Double socket



Code Pack

160mm x 110mm	DS471	1
200mm x 160mm	DS735	1

87½° JUNCTION

Double socket



Code Pack

110mm	DS269	1
160mm	DS427	1

87½° JUNCTION

Triple socket



Code Pack

110mm	DS672	1
-------	-------	---

**strong. durable.
RELIABLE**



MULTIFLEX BRANCH

Double socket



Adjusts from 90° - 45°

Code Pack

110mm	MFYDO	1
-------	-------	---

MULTIFLEX BRANCH

Triple socket



Adjusts from 90° - 45°

Code Pack

110mm	MFYTO	1
-------	-------	---

Images for 200mm sizes may vary from those shown

110mm/160mm
DRAINAGE SYSTEMS

ADAPTORS & CONNECTORS

EAZISLEEVE ADAPTOR

Flexible adaptor coupling



Complete with stainless steel clips.

Code Pack

110mm	DS026	1
Size range '121-136 / 100-115mm'		
160mm	DS027	1
Size range '170-192 / 144-160mm'		

110mm FLEXIBLE ADAPTOR

Flexible drainage coupling



Complete with stainless steel clips.
Can be used above ground.

Code Pack

110mm	DS028	1
Size range 100-115mm.		

DRAIN CONNECTOR

Finned tail - socket



Code Pack

110mm	GS121	1
	BS121	1

DRAIN CONNECTOR



PVC-u to thickwall clay pipe.

Code Pack

110mm	DS350	1
-------	-------	---

DRAIN CONNECTOR



PVC-u to thinwall clayware spigot.

Code Pack

110mm	DS351	1
-------	-------	---

DRAIN CONNECTOR



Inspection chamber to clay pipe.

Code Pack

110mm Thickwall	DS347	1
110mm Thinwall	DS348	1

DRAIN CONNECTOR



External use only

Code Pack

	DS024	50
Flexible for 50, 65 and 68mm.		

FLEXIBLE REDUCER



Fits into pipe and fittings.

Code Pack

110mm	DS025	50
Accepts 32 or 40mm.		

110mm/160mm/200mm
DRAINAGE SYSTEMS

ACCESS & NON RETURN

ACCESS PIPE

Spigot tail



Code Pack

110mm	DS309	1
200mm	DS739	1

87½° ACCESS BEND

Spigot tail



Code Pack

110mm	DS326	1
-------	-------	---

RODDING POINT

Socket tail



Code Pack

110mm	DS670	1
-------	-------	---

ACCESS CAP

Spigot tail



Code Pack

110mm	DS246	1
160mm	DS421	1

SOCKET PLUG



Code Pack

110mm	DS214	1
160mm	DS411	1
200mm	DS737	1
Also for on-site socket protection.		

REDUCER (LEVEL INVERT)



For surface water only

Code Pack

110 x 82mm	DS633	1
160 x 110mm	DS433	1
200x160mm	DS738	1

NON RETURN VALVE

Spigot tail



Code Pack

110mm	DS342	1
160mm	DS442	1

For surface water only.

MAXI-FILTRA



Code Pack

8F-STU019-BLK	1
---------------	---

MAXI-FILTRA CARTRIDGE & ALUMINIUM COVER



Code Pack

8F-STU022-YLW	1
99093	1

110mm/160mm
DRAINAGE SYSTEMS

GULLIES

GULLY TRAP



Code Pack

110mm	DS001	1
Expansion sockets 90° P Trap.		

MULTI GULLY TRAP



Code Pack

110mm	DS012	1
Use with standard Hunter bends to form P, S and Q Traps.		

CIRCULAR TOP BOTTLE GULLY



Includes grid and rodding access.
Supplied with removable back inlet plug.

Code Pack

110mm	DS046	1
-------	-------	---

SQUARE TOP BOTTLE GULLY



Includes grid and rodding access.
Supplied with removable back inlet plug.

Code Pack

110mm	DS049	1
-------	-------	---

SQUARE GULLY TOP



200mm x 200mm.

Code Pack

	DS054	1
For use with DS046.		

CIRCULAR GRID GULLY TOP



180mm Ø

Code Pack

	DS055	1
For use with DS046, DS049 and DS054.		

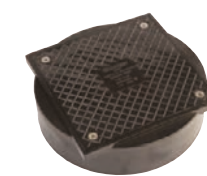
RAISING PIECE



Code Pack

160mm	DS048	1
For use with DS046, DS049 and DS054.		

SEALED GULLY ACCESS



150mm x 150mm

Code Pack

	DS047	1
Also fits 110mm and 160mm pipes.		

HOPPERS

110mm
DRAINAGE SYSTEMS

SQUARE HOPPER

Solvent socket tail



Code Pack

110mm DS003 1

SQUARE HOPPER

230mm spigot tail



Code Pack

110mm DS002 1

SQUARE HOPPER & GRATING

Spigot tail



With grating.

Code Pack

110mm DS004 1

BACK INLET HOPPER

Solvent socket tail



Code Pack

110mm DS007 1

BACK INLET HOPPER

230mm spigot tail



Code Pack

110mm DS006 1

BACK INLET HOPPER & GRATING

Spigot tail



With grating and back inlet plate.

Code Pack

110mm DS008 1

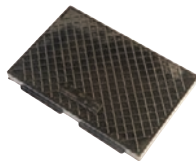
GRATING



Code Pack

150x150mm DS020 10

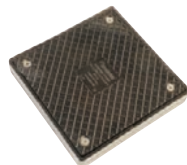
BACK INLET PLATE



Code Pack

150x100mm DS011 10

SEALED COVER PLATE



Code Pack

150x150mm DS022 10

CHANNEL PIPE & FITTINGS

110mm/160mm
DRAINAGE SYSTEMS

LH 45° CHANNEL BEND



Code Pack

110mm DS561 1

RH 45° CHANNEL BEND



Code Pack

110mm DS563 1

GOOD TIP

Adding channel bends into a manhole?
Always face towards the water flow when determining whether right or left hand bends are required.

CHANNEL PIPE



Code Pack

110mm DS559 1

160mm DS560 1

Flanges supplied loose.

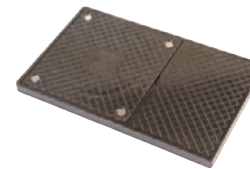
87½° 455mm LONG RADIUS BEND



Code Pack

110mm DS566 1

SEALED BACK INLET PLATE



Code Pack

150x250mm DS010 10

DRAIN LEAF GUARD



- Helps to prevent blocked drains
- Fits drains up to 300mm wide x 265mm
- Can accept shapes and types of downpipe
- 32-110mm pipe guides moulded on the inside for easy cutting.

Code Pack

DS500 15

110mm/160mm

INSPECTION CHAMBERS

Hunter inspection chambers are designed to offer an easier, more economical alternative to traditionally constructed manholes.



450mm EQUAL CHAMBERBASE



263mm invert

110mm connections

Code Pack

450mm	DS050	1
-------	-------	---

3 sockets supplied with blanking plugs.

450mm UNEQUAL CHAMBERBASE



360mm invert

110mm & 160mm connections

Code Pack

450mm	DS066	1
-------	-------	---

Side sockets supplied with blanking plugs.

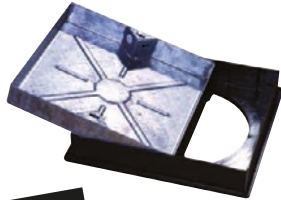
BLANKING PLUG



Code Pack

110mm	DS056	1
-------	-------	---

SQUARE/ROUND ACCESS COVER



5 tonne loading

Code Pack

580x580x95mm	DS065	1
--------------	-------	---

Suits pedestrian areas/domestic driveways (accepts paviors).

SQUARE COVER AND FRAME



3.5 tonne loading

Code Pack

580x580mm	DS076	1
-----------	-------	---

Durable polypropylene, suits pedestrian areas/domestic driveways. Lockable cover complies with Building Regs Part H.

RAISING PIECE



164mm effective height

Code Pack

450mm	DS058	1
-------	-------	---

For use with DS050 or DS066. Stacking DS058 will create a watertight seal up to 1.2m, without seals or silicone.

ROUND COVER AND FRAME



3.5 tonne loading

Code Pack

450mm	DS062	1
-------	-------	---

Durable polypropylene, suits pedestrian areas/domestic driveways. Lockable cover complies with Building Regs Part H. Overall size 550mm, clear opening 450mm

CHAMBERBASE SEAL



Code Pack

450mm	DS067	1
-------	-------	---

For DS066 base to first riser only.

110mm

SHALLOW ACCESS

230mm EQUAL CHAMBERBASE



140mm invert

110mm connections

Code Pack

230mm	DS071	1
-------	-------	---

Side sockets supplied with blanking plugs.

RAISING PIECE



205mm effective height

Code Pack

250mm (OD)	DS072	1
------------	-------	---

2 risers form 600mm overall height.

SQUARE/ROUND ACCESS COVER



3.5 tonne loading

Code Pack

390x390x95mm	DS075	1
--------------	-------	---

Durable polypropylene suits pedestrian areas/domestic driveways (Also suitable for 300mm riser).

O RING SEAL



To form sealed access

Code Pack

250mm	DS040	1
-------	-------	---

For DS069 only.

ROUND PVC-U COVER



Sealed unit

Code Pack

275mm	DS069	1
-------	-------	---

Suits pedestrian areas only. 1 tonne loading. Overall frame 298mm, clear opening 211mm

SQUARE PVC-U COVER



Code Pack

320x320mm	DS068	1
-----------	-------	---

Suits pedestrian areas only. 1 tonne loading.

GOOD TO KNOW

ASSEMBLY HEIGHT GUIDE

Max depth 1200mm

Max depth 600mm



DS050

DS066

DS071

Base only	280mm	360mm	189mm
Base with 1 riser	444mm	524mm	394mm
Base with 2 risers	608mm	688mm	600mm
Base with 3 risers	772mm	852mm	-
Base with 4 risers	936mm	1016mm	-
Base with 5 risers	1100mm	1180mm	-

110mm/160mm

ADOPTABLE INSPECTION

An adoptable inspection chamber range compliant with Sewers for Adoption and Building Regulations.

All products in the Sewers for Adoption/OFWAT code of adoption range are suitable for both adoptable and non-adoptable applications and are easily identified on site due to their blue snap caps.

CHAMBER SYSTEMS

250mm inspection chamber Suitable for up to 2m in depth

INSPECTION CHAMBER BASE

110mm connections



Code Pack

250mm UCC250 1

CHAMBER RISER



Code Pack

375mm high UAR1 1

315mm inspection chamber Suitable for up to 2m in depth

INSPECTION CHAMBER BASE

110mm connections



Code Pack

315mm UCC315 1

CHAMBER RISER

300mm



Code Pack

270mm high UAR4 1

500mm high UAR2 1

1000mm high UAR3 1

DUCTILE IRON LID AND FRAME

B125 12.5 tonnes



Code Pack

300mm UCL315 1

Overall frame 340mm, clear opening 250mm

450mm inspection chamber Suitable for up to 3m in depth

INSPECTION CHAMBER BASE

160 & 110mm connections



Code Pack

450mm UCC5 1

400mm high, 3m depth for adoptable and 4m depth for non-adoptable applications

INSPECTION CHAMBER BASE

110mm connections



Code Pack

450mm UCC450 1

400mm high, 3m depth for adoptable and 4m depth for non-adoptable applications

DEEP INSPECTION CHAMBER RISER



Code Pack

480mm high UCR3 1

Includes one seal, use SR450 seal between each connection

DUCTILE IRON LID AND FRAME

B125 12.5 tonnes



Code Pack

450mm UCL125 1

Overall frame 550mm, clear opening 450mm

REDUCED ACCESS RING

Ductile iron



Code Pack

450mm UCLRR2 1

For use with UCL125, reduces access to 350mm
Overall size 460mm, clear opening 350mm

DEEP INSPECTION CHAMBER RISER CLIP

For use with UCR3



Code Pack

110mm UCC10D 10

INSPECTION CHAMBER INSERTS



Code Pack

Left Hand UCB1 1

Right Hand UCB2 1

SPARE BLANKING PLUG



Code Pack

110mm UCP1 70

160mm UCP2 75

SPARE RING SEAL



Code Pack

450mm SR450 1

For use with UCR3 riser on each connection

110mm/160mm

DEEP INSPECTION

CHAMBER BASE

All socket connections



605mm
invert

Code Pack

450mm UCC450 1

Max invert depth 4m (when used with UCR3 Riser). 3m for adoptable applications.

450mm UNEQUAL CHAMBERBASE



360mm
invert

110mm & 160mm connections

Code Pack

450mm DS066 1

Side sockets supplied with blanking plugs. Use with a SR450 and UCR3.

CHAMBER RISER CLIP



Pack quantity 10

Code Pack

UCC10D 10

For use with UCR3 Riser.

CHAMBER RISER

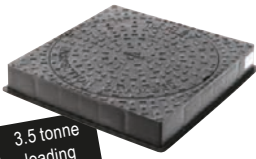


Code Pack

480mm high UCR3 1

Includes one seal, use SR450 seal between each connection.

SQUARE COVER AND FRAME



3.5 tonne
loading

Code Pack

450mm DS076 1

Durable polypropylene, suits pedestrian areas/domestic driveways. Lockable cover complies with Building Regs Part H.

CIRCULAR COVER AND FRAME



3.5 tonne
loading

Code Pack

450mm DS062 1

Durable polypropylene, suits pedestrian areas/domestic driveways. Lockable cover complies with Building Regs Part H. Overall size 550mm, clear opening 450mm

REDUCED ACCESS RING



Code Pack

450mm UCLRR 1

Provides 350mm restriction opening. Use with DS076, DS062 and DS065.

SPARE RING SEAL



Code Pack

450mm SR450 1

BLANKING PLUG

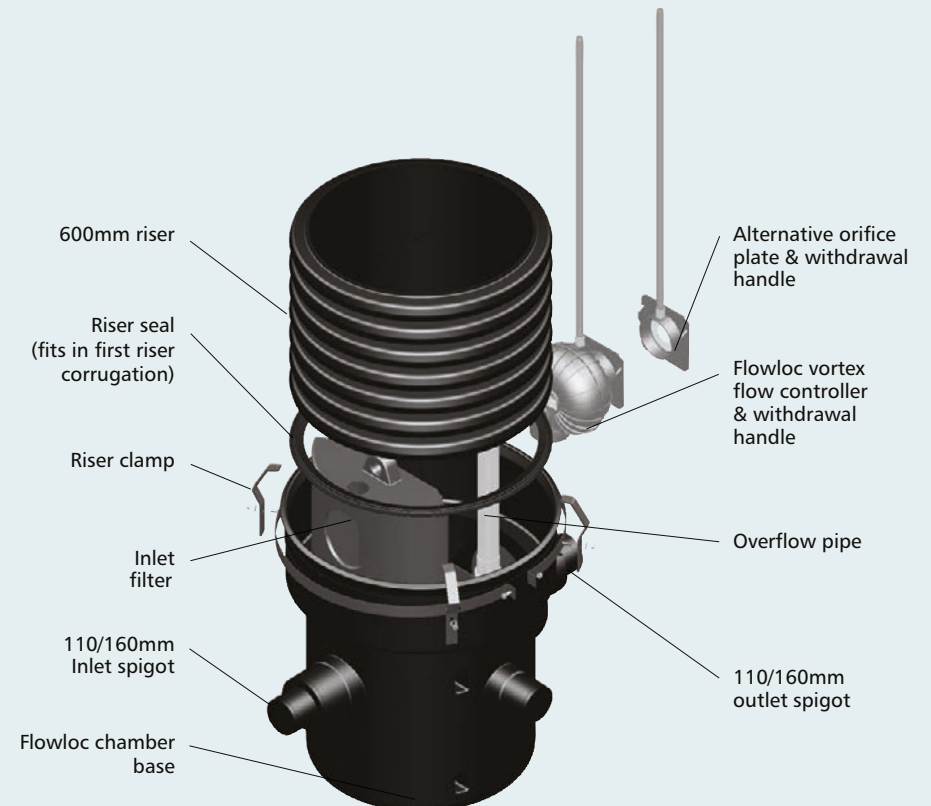


Code Pack

110mm DS056 1

Flowloc System

Flowloc is a vortex flow control unit, which is used as part of an attenuation scheme. It controls the rate at which water is discharged to a drainage system or watercourse, ensuring compliance set overflow rates. Flowloc is supplied within a chamber base with an integrated filter providing protection against controller blockage.



FLOWLOC

Flowloc is a vortex flow control device. Used as part of an attenuation scheme, Flowloc controls the rate at which water is discharged to a surface water drain or watercourse.



Flowloc vortex flow control unit: Performance data (l/s)

Product Code	USW40	USW50	USW60	USW70	USW80	USW90	Performance data (l/s)	
							flow rate (l/s)	Water head (m)
2.50		3.00	3.60	4.30	5.20	7.00		0.5
2.59		3.10	3.75	4.45	5.25	7.05		0.55
3.00		3.45	4.20	5.25	6.35	8.25		0.81
3.20		3.70	4.80	5.80	7.00	9.00		1.0
3.25		3.80	4.95	6.00	7.20	9.30		1.07
3.39		4.20	5.45	6.60	7.98	10.30		1.33
3.40		4.40	5.60	7.00	8.40	10.90		1.5
3.42		4.50	5.75	7.20	8.65	11.20		1.59
3.75		4.85	6.05	7.80	9.60	12.05		1.85
3.80		5.00	6.20	8.10	9.80	12.50		2.0
3.85		5.10	6.35	8.30	10.06	12.85		2.11
3.95		5.30	6.65	8.80	10.58	13.65		2.37
4.00		5.40	6.80	9.00	10.80	14.00		2.5
4.20		5.50	6.90	9.20	11.05	14.40		2.63
4.30		5.65	7.15	9.40	11.45	15.10		2.89
4.40		5.70	7.20	9.50	11.60	15.40		3.0
4.45		5.75	7.25	9.60	11.78	15.75		3.15
4.59		5.79	7.35	9.65	11.85	16.45		3.41
4.60		5.80	7.40	9.70	12.00	16.50		3.5
4.61		5.80	7.41	9.80	12.10	17.81		3.67

FLOWLOC VORTEX FLOW CONTROL UNIT +



	Code	Pack
40	USW40	1
50	USW50	1
60	USW60	1
70	USW70	1
80	USW80	1
90	USW90	1

Includes flow control unit, chamber base with controller housing, inlet filter and overflow pipe.
+ Available to order

SILT TRAP



	Code	Pack
600	USW30	1
250	UG60	

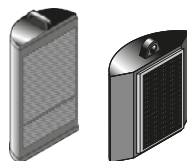
ORIFICE PLATE FLOW CONTROL UNIT +



	Code	Pack
15	USW415	1
20	USW420	1
25	USW425	1
30	USW430	1
35	USW435	1
40	USW440	1
45	USW445	1
50	USW450	1
55	USW455	1
60	USW460	1
65	USW465	1
70	USW470	1
75	USW475	1
80	USW480	1
85	USW485	1

Includes flow control unit, chamber base with controller housing, inlet filter and overflow pipe.
+ Available to order

INLET FILTER



	Code	Pack
UG61		1
For use with UG60 silt trap		
USW29		1
Includes lifting chain For use with USW30 silt trap		

RISER



	Code	Pack
1m 600	USW301	1
2m 600	USW32	1
3m 600	USW33	1

Supplied with riser clamp and seal
For use with flow control devices or USW30 silt trap

Orifice plate flow control unit: Performance data (l/s)



Product code	USW415	USW420	USW425	USW430	USW435	USW440	USW445	USW450	USW455	USW460	USW465	USW470	USW475	USW480	USW485	Performance data (l/s)	
																flow rate (l/s)	Water head (m)
Orifice dia mm	15	20	25	30	35	40	45	50	55	60	65	70	75	80	85		
0.34	0.61	0.95	1.37	1.87	2.44	3.09	3.81	4.61	5.49	6.44	7.47	8.58	9.76	11.02		0.5	
0.36	0.64	1.00	1.44	1.96	2.56	3.24	4.00	4.84	5.76	6.76	7.84	9.00	10.24	11.56		0.55	
0.44	0.78	1.21	1.75	2.38	3.11	3.93	4.85	5.87	6.99	8.20	9.51	10.92	12.42	14.03	0.81		
0.49	0.86	1.35	1.94	2.64	3.45	4.37	5.39	6.52	7.76	9.11	10.57	12.13	13.80	15.58	1.0		
0.50	0.89	1.39	2.01	2.73	3.57	4.52	5.58	6.75	8.03	9.43	10.93	12.55	14.28	16.12	1.07		
0.56	0.99	1.55	2.24	3.05	3.98	5.04	6.22	7.52	8.95	10.51	12.19	13.99	15.92	17.97	1.33		
0.59	1.06	1.65	2.38	3.24	4.23	5.35	6.60	7.99	9.51	11.16	12.94	14.86	16.91	19.09	1.5		
0.61	1.09	1.70	2.45	3.33	4.35	5.51	6.80	8.23	9.79	11.49	13.33	15.30	17.41	19.65	1.59		
0.66	1.17	1.83	2.64	3.59	4.69	5.94	7.33	8.87	10.56	12.39	14.38	16.50	18.78	21.20	1.85		
0.69	1.22	1.91	2.75	3.74	4.88	6.18	7.63	9.23	10.98	12.89	14.95	17.16	19.52	22.04	2.0		
0.70	1.25	1.96	2.82	3.84	5.01	6.34	7.83	9.48	11.28	13.24	15.35	17.62	20.05	22.64	2.11		
0.75	1.33	2.08	2.99	4.07	5.31	6.72	8.30	10.04	11.95	14.03	16.27	18.68	21.25	23.99	2.37		
0.77	1.36	2.13	3.07	4.18	5.46	6.91	8.53	10.32	12.28	14.41	16.71	19.18	21.83	24.64	2.5		
0.79	1.40	2.19	3.15	4.28	5.60	7.08	8.74	10.58	12.59	14.78	17.14	19.68	22.39	25.27	2.63		
0.83	1.47	2.29	3.30	4.49	5.87	7.43	9.17	11.09	13.20	15.49	17.97	20.63	23.47	26.49	2.89		
0.84	1.49	2.33	3.36	4.58	5.98	7.57	9.34	11.31	13.45	15.78	18.31	21.01	23.91	26.99	3.0		
0.86	1.53	2.39	3.45	4.69	6.12	7.75	9.57	11.58	13.78	16.17	18.76	21.53	24.50	27.66	3.15		
0.90	1.59	2.49	3.58	4.88	6.37	8.07	9.96	12.05	14.34	16.83	19.52	22.40	25.49	28.78	3.41		
0.91	1.61	2.52	3.63	4.94	6.46	8.17	10.09	12.21	14.53	17.05	19.77	22.70	25.83	29.15	3.5		
0.93	1.65	2.58	3.72	5.06	6.61	8.37	10.33	12.50	14.88	17.46	20.25	23.24	26.45	29.85	3.67		

Terms and conditions may differ for each product

QUANTUM

150mm/225mm/300mm DRAINAGE SYSTEMS

WHEN ORDERING PLEASE NOTE:

-  = Seals supplied
-  = Seals to be ordered

150mm

225mm

300mm

Quantum is a twin wall, structured drainage system designed to tolerate ground movement. Available in 3 sizes with a range of **GOOD** dual purpose fittings designed for use with Quantum Highway or Sewer Pipes.



SOCKETED HIGHWAY PIPE



	Code	Pack
150mm (6m)	UPH16	1
225mm (6m)	UPH26	1
300mm (6m)	UPH36	1

SOCKETED HIGHWAY PIPE



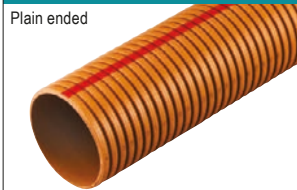
	Code	Pack
150mm (6m)	UHH16	1
225mm (6m)	UHH26	1
300mm (6m)	UHH36	1

SOCKETED HIGHWAY PIPE



	Code	Pack
150mm (6m)	USH16	1
225mm (6m)	USH26	1
300mm (6m)	USH36	1

SEWER PIPE



	Code	Pack
150mm (3m)	ULS13	1
150mm (6m)	ULS16	1
225mm (3m)	ULS23	1
300mm (3m)	ULS33	1

SOCKETED SEWER PIPE



	Code	Pack
150mm (3m)	UPS13	1
150mm (6m)	UPS16	1
225mm (3m)	UPS23	1
225mm (6m)	UPS26	1
300mm (3m)	UPS33	1
300mm (6m)	UPS36	1

COUPLING

Double socket



	Code	Pack
150mm	UME15Q	4
225mm	UME25	2
300mm	UME35	1

SLIP COUPLING

Double socket



	Code	Pack
150mm	UME16Q	4
225mm	UME26	2
300mm	UME36	1

LEVEL INVERT REDUCER



	Code	Pack
225x150mm	UML21	1
300x225mm	UML32	4

UML21 – Remove seal from 150mm socket to accept Quantum pipe.

FLEXIBLE COUPLING



	Code	Pack
150mm	UMD17	3
225mm	UMD27	3
300mm	UMD37	1

END CAP



Push Fit	Code	Pack
150mm	UMK11	8
225mm	UMK21	15
300mm	UMK31	2

Push-fits over Quantum pipe with the seal in the first corrugation of the pipe.

SOCKET PLUG



	Code	Pack
150mm	UMJ11	8

Push-fits into socket with Quantum seal fitted into the first corrugation.

RODDING POINT TERMINAL



	Code	Pack
150mm	URP2Q	1

A15 loading, suitable for driveway applications when supported with concrete surround.

ADAPTOR TO CLAYWARE

Quantum or solid wall pipe



	Code	Pack
150mm	UMA45	1

Remove seal from socket to accept Quantum pipe.

ADAPTOR

Quantum socket to solid wall spigot



	Code	Pack
160x150mm	UMA17	1

QUANTUM

150mm/225mm/300mm DRAINAGE SYSTEMS

150mm

225mm

300mm

87½° BEND

Double socket



Code Pack

150mm	UMB19Q	2
-------	--------	---

90° BEND

Double socket



Code Pack

225mm	UMB29	1
300mm	UMB39	1

45° BEND

Double socket



Code Pack

150mm	UMB14Q	2
225mm	UMB24	1
300mm	UMB34	1

225mm 45° UNEQUAL BRANCH

Triple socket



Code Pack

300mm	UMY32	1
-------	-------	---

110mm 87½° UNEQUAL BRANCH

Triple socket



Code Pack

150mm	UMY12Q	2
-------	--------	---

110mm sockets accept solid wall pipe.

SNAP CAP AND SEAL

Seals in packs of 5



Code Pack

Seal	SR160T	
Snap Cap	SNC6	10

To convert 150mm Quantum fittings to accept 160mm solid wall pipe.

30° BEND

Double socket



Code Pack

150mm	UMB13Q	2
225mm	UMB23	1
300mm	UMB33	1

15° BEND

Double socket



Code Pack

150mm	UMB11Q	2
225mm	UMB21	1
300mm	UMB31	1

87½° EQUAL BRANCH

Triple socket



Code Pack

150mm	UMY13Q	2
-------	--------	---

GULLY POT LINER



Supplied with SNC6 snap cap and SR61T seal for use with Quantum bend or coupling to provide connection to gully spigot.
British board of Agrément Approved Roads & Bridges Certificate No 91/RO66 and complies with Department of Transport 'Specification for Highway Works'.

Code Pack

90 Litres	UMA43	1
112 Litres	UMA49	1

SPARE QUANTUM PIPE SEALS

Seals in packs of 5



Conforms to BS EN 681-1 1996 Type WC

Code Pack

150mm	UMR150	
225mm	UMR225	
300mm	UMR300	

45° EQUAL BRANCH

Triple socket



Code Pack

150mm	UMY11Q	2
225mm	UMY22	1
300mm	UMY33	1

110mm 45° UNEQUAL BRANCH

Triple socket



Code Pack

150mm	UMY10Q	2
225mm	UMY20	1
300mm	UMY30	1

110mm sockets accept solid wall pipe.

150mm 45° UNEQUAL BRANCH

Triple socket



Code Pack

225mm	UMY21	1
300mm	UMY31	1

UMY21 150mm socket – Add snap cap & seal to accept Quantum pipe.
UMY31 150mm socket – Remove seal to accept Quantum pipe.

GOOD TO KNOW

Quantum sewer pipes have a red strip painted along each length to help distinguish them from Quantum highway pipes.



LUBRICANT



Code Pack

250ml	SC966	1
-------	-------	---



Sales Hotline

0330 111 4233

Lenham, Maidstone,
Kent, ME17 2DE

hunterplastics.co.uk