

Arctic Shower System Installation Instructions

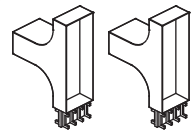
TR3005

Please retain for future reference

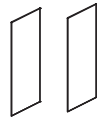
Brought to you by the Roper Rhodes Group
Brassmill Lane Trading Estate
Bath
BA1 3JF
t: 01225 303900

Contents

Rail Assembly
(Pre-assembled)



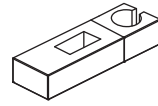
2 x Wall Brackets



2 x Wall Bracket Covers



1 x Riser Rail



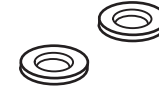
1 x Handset Bracket



2 x Wall Plugs & Screws



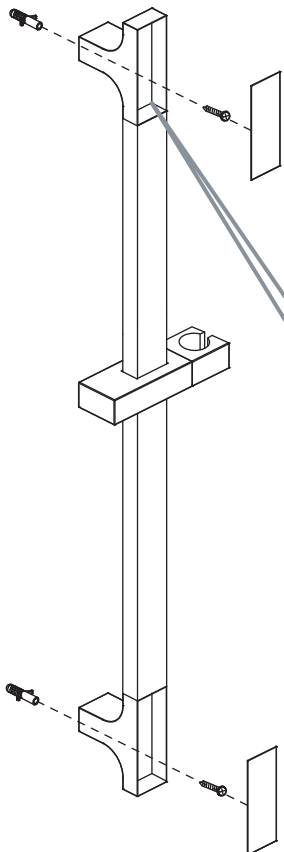
1 x Handset



2 x Rubber Washers for
Shower Hose

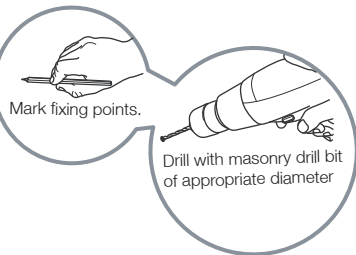


1 x Shower Hose



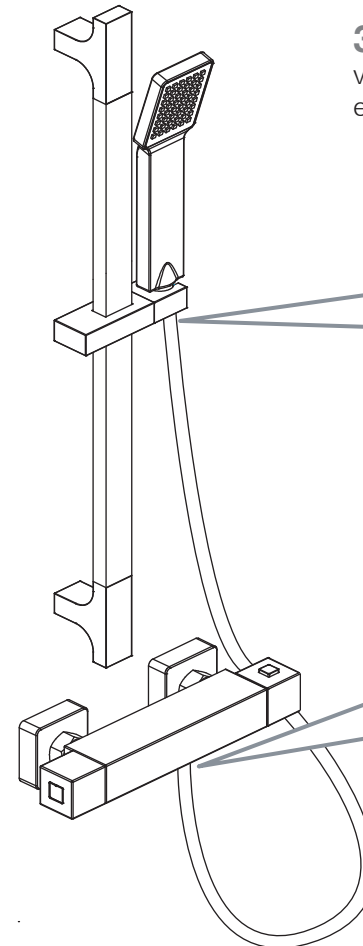
1. Remove the wall bracket covers from the rail assembly .

2. Offer the assembly up to the wall in the desired location relative to the shower valve and mark the fixing points through the holes in the wall brackets. Drill with a masonry drill bit of appropriate diameter. Use the supplied wall plugs or fixings appropriate to the wall material. Replace cover caps.

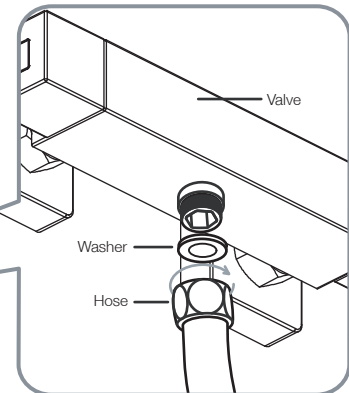
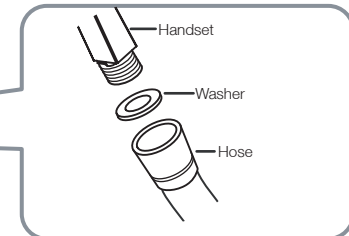


REMEMBER

Wear suitable eye protection when drilling. Take care when using power tools near water - the use of a residual current device (RCD) is advised. Beware of hidden cables or pipes. When drilling tiled surfaces, a piece of masking tape applied to the wall before marking out the fixing holes will stop the drill wandering.



3. Attach the shower hose to the handset and the bar valve, making sure to include the rubber washer at either end .



Refer to separate instructions
for valve installation