

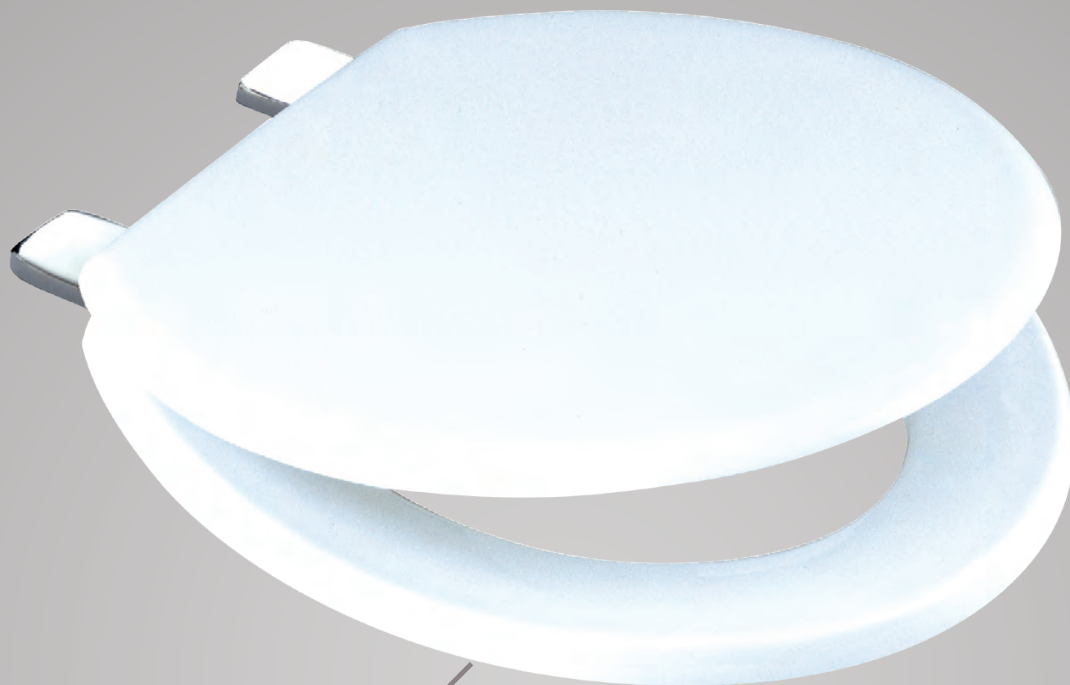
Toilet seat



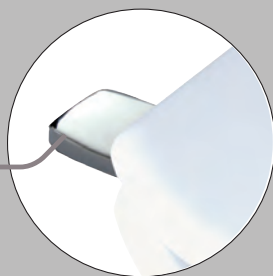
OUTSTANDING
QUALITY FROM
THE UK

EMERALD

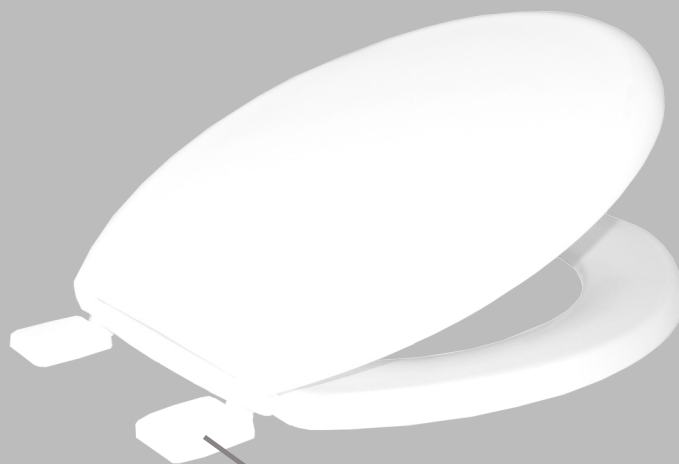
The seat which set BS1254 Type 2



SHATTERPROOF
THERMOPLASTIC TOILET SEAT



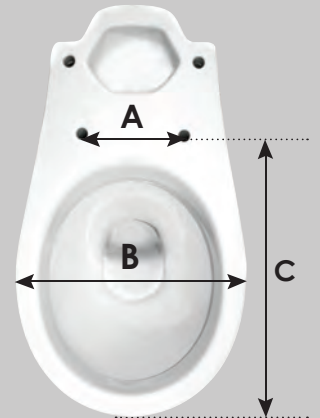
TOP FIX
PRE-ASSEMBLED C/P HINGE



AVAILABLE WITH PLASTIC
BOTTOM FIX HINGES

- > Shatterproof Thermoplastic seat
- > Ideal for high traffic areas
- > Easy to install
- > Universal shape
- > Pre-assembled plastic hinge or top fix chrome plated hinge

TECHNICAL CHARACTERISTICS



SEAT FITTING DIMENSIONS

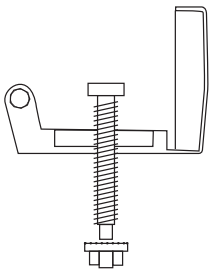
A - 145 - 175mm




B - 380mm

C - 430 - 460mm

WEIGHT	1.8kg
MATERIAL	Polypropylene
COLOUR	Available in black or white
BUFFERS	4 integrated buffers on the seat 2 integrated buffers on the cover

HINGE TECHNICAL CHARACTERISTICS



MATERIAL	POLYPROPYLENE	CHROME PLATED
FITTINGS PACK	PLASTIC BOLT & NUT	METAL BOLT & NUT
FIXING	BOTTOM FIX 	TOP & BOTTOM FIX  

DESCRIPTION	SEAT & COVER WHITE PLASTIC HINGE	SEAT & COVER BLACK PLASTIC HINGE	SEAT & COVER METAL HINGE	SEAT & COVER METAL HINGE
	WHITE	BLACK	WHITE	BLACK
REFERENCE	SEM11WH	SEM11BL	SEM18WH	SEM18BL
EAN CODE	5017134106527	5017134106428	5017134116212	5017134116236
PACKAGING	Individually boxed	Individually boxed	Individually boxed	Individually boxed
PALLET	100	100	100	100

C001 - 07 / 2016