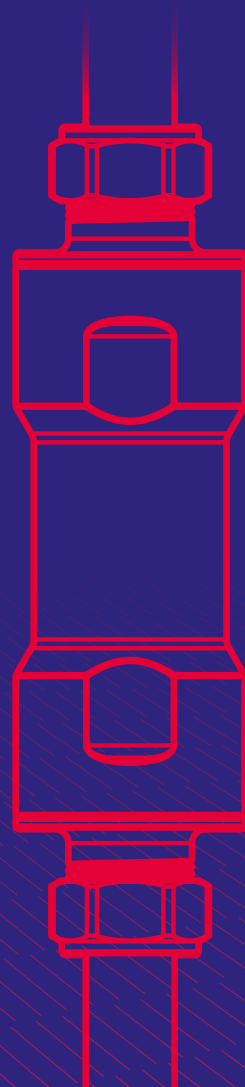


ADEY[®]

MagnaScale 2[®]

Scale Reducer - 15mm compression
Installation and servicing



MagnaScale2®

Protection against limescale for individual appliances

Hard water causes limescale formation in hot and cold water systems. Limescale builds up on heating elements in domestic appliances making them less efficient and shortening their operational life. *MagnaScale2* has been designed to protect against limescale build-up in individual appliances.

Installation meets the requirements of Part L of the Building Regulations. This states that provision must be made to treat the feed water to water heaters and hot water circuit of combination boilers to reduce the rate of limescale accumulation.

Technical Specification

Connection	15mm compression to BS EN 1254-2
Material	Low lead brass body & end caps with internal magnet
Maximum operating temperature	85°C
Minimum operating temperature	3°C
Maximum working pressure	10 bar
Overall length (mm) - with nuts	147
Diameter (mm)	39
Weight (g)	496g
Pressure drop	25L/min = 123mbar
Warranty	10 years

For the most up to date version of the *MagnaScale2* Installation instructions visit adey.com.

Installation

IMPORTANT:

Please read before installation of *MagnaScale2* Scale Reducer.

MagnaScale2 can be installed on both horizontal and vertical pipework.

MagnaScale2 should be fitted as close to the boiler as possible without exceeding the maximum operating temperature (85°C).

Where possible do not reuse old pipes.

Only WRAS approved jointing compounds should be used.

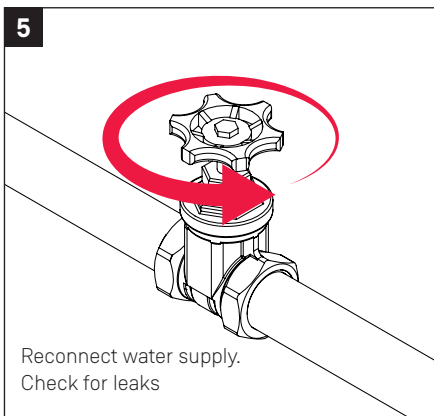
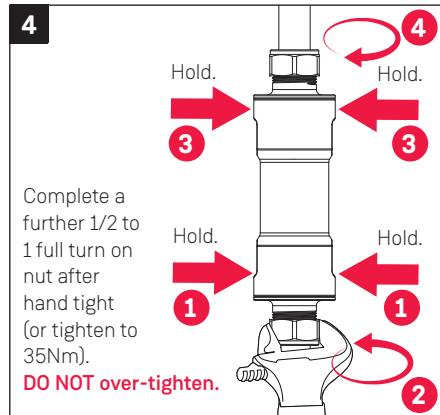
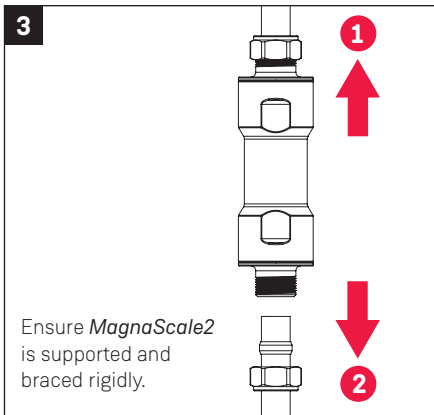
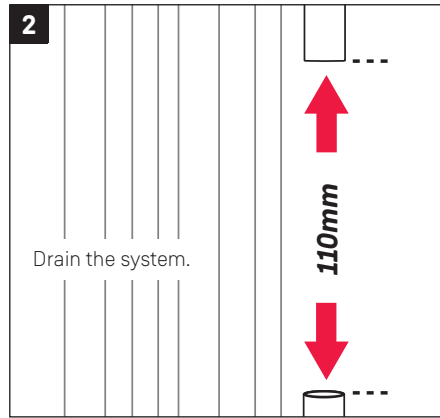
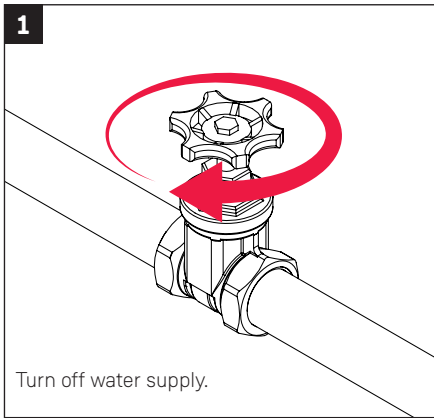
To maintain earth continuity in accordance with current IEE regulations, when required a suitable earth bonding cable should be fitted to the pipework to bypass the product. Refer to latest national/local wiring regulations.

This product must be fitted in accordance with WRAS installation requirements and notes, which can be found on the WRAS website <https://www.wrasapprovals.co.uk/>

It is recommended that a pressure reducing valve is fitted to the incoming water mains to maintain a constant water pressure at all times.

Care should be taken NOT TO solder near product as flux residue and heat may cause damage.

Installation





Clean



MagnaCleanse



MagnaClean



Protect



Test



Maintain

ADEY®

Telephone UK: +44 (0)1242 546717 or EU: +33 (0)4 50 18 33 33 Email: info@adey.com

www.adey.com

UK: ADEY Ltd, Unit 2, St Modwen Park, Stonehouse, GL10 3EZ
EU: ADEY Innovation SAS, 119 Bis, Rue de Colombes, 92600 Asnières sur Seine, France



Produced from recycled material
A carbon neutral company

All ADEY marks are trademarks of Adey Holdings (2008) Limited. Please visit adey.com/trademarks for a list of ADEY marks
Copyright Adey Holdings (2008) Limited © 2021. All rights reserved.

M022161_LF2-01-05674_V1