

## RIMLESS 30CM INFANT SCHOOL PAN CLOSE COUPLED/BTW/LOW LEVEL



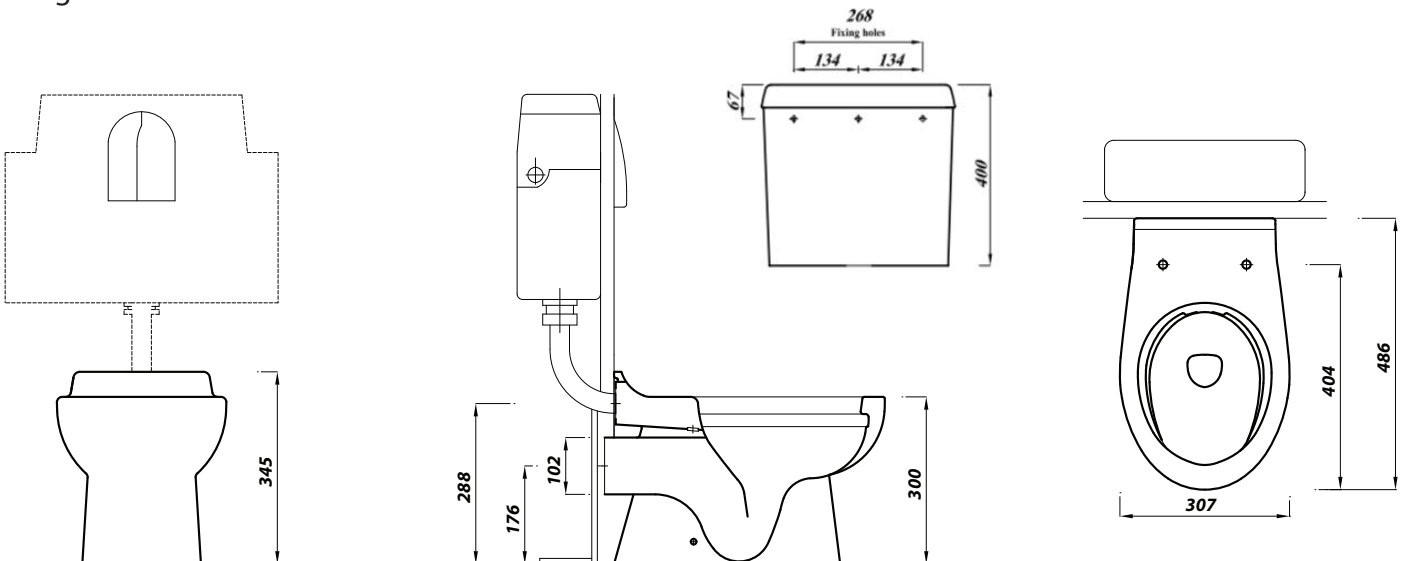
<b>Product Code</b>	<b>SC30BTWRIM</b>
<b>Outlet</b>	Horizontal
<b>Weight (Kg)</b>	16.1
<b>Fixing kit included</b>	Yes
<b>Material</b>	Vitreous China
<b>Flushing Volume (Ltr)</b>	4/2.6
<b>Suitable Cistern for CC &amp; LL</b>	SCWHPCI
<b>Suitable Crescent Standard Seat</b>	STWHSRING

### Key features:

- CE Compliant
- Rimless design
- Three in one pan configuration
- Lifetime ceramic guarantee\*

### Description:

Designed for early years settings, this 300mm height toilet is designed for infant users. The pan is specifically engineered to be used in a back to wall, close coupled or low level configuration. Suitable lever concealed cisterns: BTWLEVCI/BTWPHACI. Suitable PB concealed cistern: BTWPBCI/BTWCOMPACT2



All dimensions are approximate and subject to normal ceramic variation. Although every effort is made not to change the above product specification, Lecico reserve the right to do so without prior notification if necessary. \*Against manufacturers defects. Full information on guarantees available upon request.