



Reliance Worldwide Corporation (UK) Ltd
Worcester Road,
Evesham,
Worcester,
WR11 4RA,
UK

Tel: +44 (0)1386 712 400
Fax: +44 (0)1895 712 401

www.rwc.co.uk

Installation and Maintenance Instructions

RELIANCE

Tenant Valve Plus



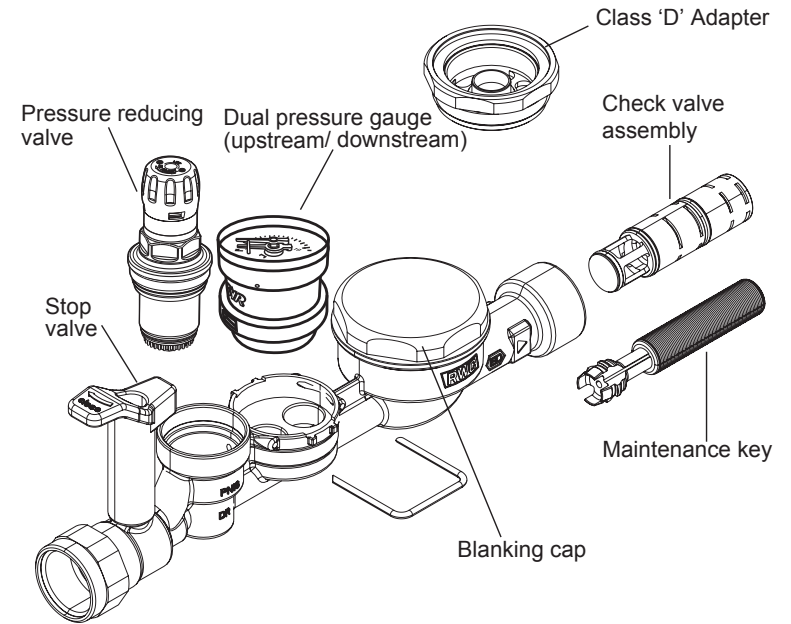
A space saving, compact water monitoring unit, ideal for apartment blocks and multi-occupancy buildings.



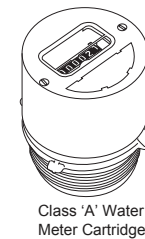
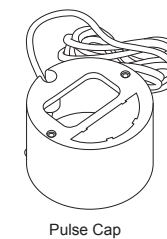
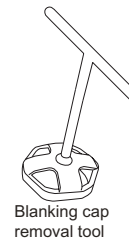
Contents

Reliance Worldwide Corporation (UK) Ltd.....	2
General Information.....	2
Working Parameters and Specifications.....	3
Dimensions.....	3
Installation.....	4
Commissioning.....	5
Maintenance.....	6
Installing a water meter cartridge.....	8
Spares & Accessories.....	10

Spares & Accessories



Product Code	Description
REDC201001:	Adj PRV cartridge
GAGE201001:	Dual reading up and downstream pressure gauge
TCHK201001:	Check valve assembly & maintenance key
BCAP100100:	Blanking cap for water meter connection
TOOL201001:	Blanking cap removal tool
INSU201001:	Replacement insulation shell
TADP200075:	Class 'D' water meter adaptor
WATM110700:	Class 'A' cold water meter cartridge
WATM110750:	Class 'A' hot water meter cartridge
PCAP110700:	Retrofit clip on pulse output cap



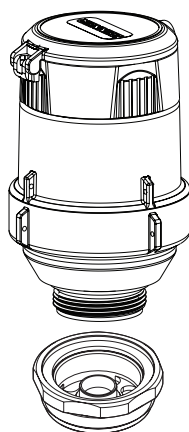
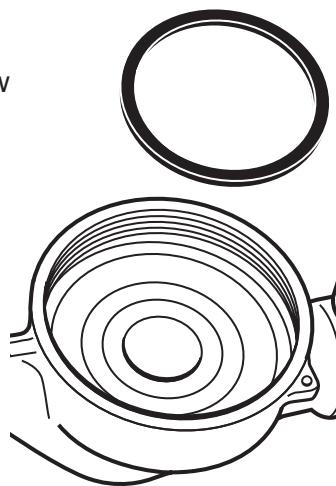
4. Making sure the o-ring is in place, screw the water meter cartridge into position and tighten to seal.

5. Feed the thin wire through the hole on the Tenant Valve Plus and then through the hole on the water meter cartridge. Connect the two ends with the lead seal.

6. Re-fit the polystyrene insulation around the Tenant Valve Plus and open the integral ball valve.

7. Check the outlet pressure on the dual pressure gauge and repeat the commissioning process if required.

Note: To fit a pre-calibrated Class 'D' primary charging meter cartridge, supplied by a water authority, the previous steps apply but the Class 'D' Adaptor is needed in this instance.



Reliance Worldwide Corporation (UK) Ltd

Reliance Worldwide Corporation (UK) Ltd are part of the Australian based group of companies collectively known as Reliance Worldwide Corporation, with the UK brand known as Reliance Water Controls.

Reliance Worldwide Corporation (UK) Ltd is a specialist in the design, distribution and technical support for temperature and flow controls.

With group offices and manufacturing plants throughout the world RWC offers a wealth of knowledge and expertise which is reflected throughout our products. Being part of many specialised trade associations and having our own UKAS accredited laboratory, makes us at the forefront of any new regulations or changes which impact the industry, and allows for continuous product development and innovation, within our specialised product area.

General Information

The Tenant Valve Plus combines a number of functions in one compact self-contained unit to control and monitor water supply to multi-occupancy buildings, such as flats or offices. It's single unit cartridge design ensures a quick and easy installation with reduced leakage potential and simple future maintenance, saving costs.

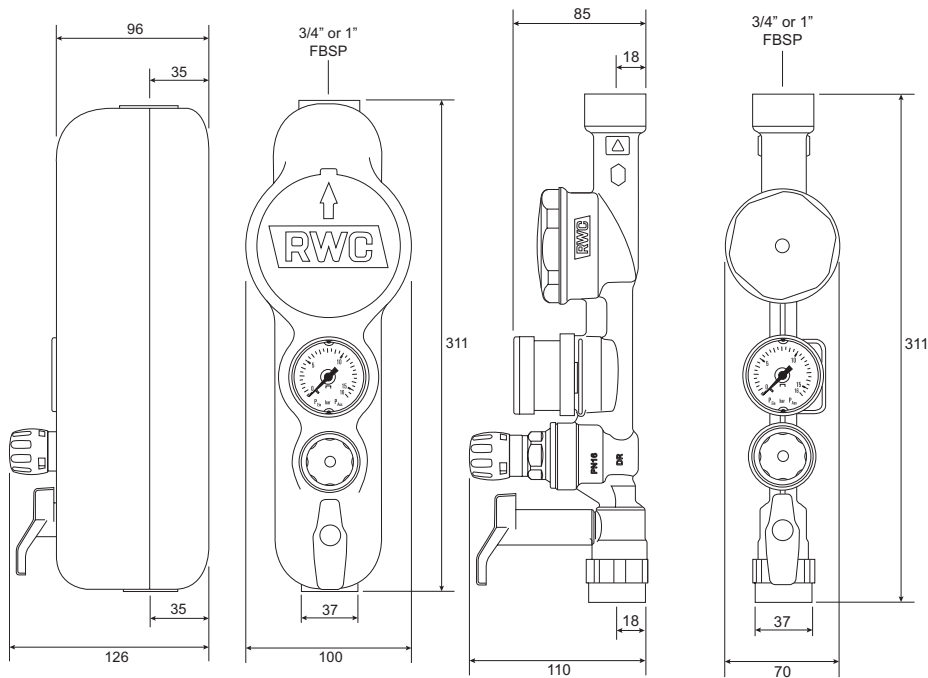
It incorporates a ball type isolating valve, approved as a stop valve by water regulations (WRAS), pressure reducing valve prior to the water meter for protection, double check valves in a removable housing, pressure gauge displaying upstream and downstream pressures and a connection point for the optional addition of a Class 'A' water meter. Alternatively, an adaptor is available from RWC to fit a Class 'D' water meter.

All components are accessible from one side of the valve, which comes supplied with a moulded insulation cover.

Working Parameters and Specifications

Maximum Inlet Pressure:	16 Bar
Outlet Adjustable Pressure:	1.5 - 6 Bar
Pre-set Pressure:	4 Bar
Maximum Temperature:	80°C
Suitable Media:	Potable water
Mounting position:	Horizontal or vertical

Dimensions

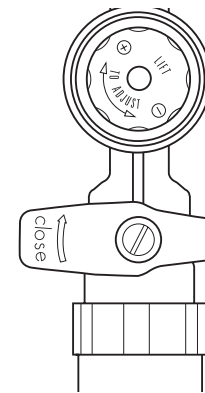
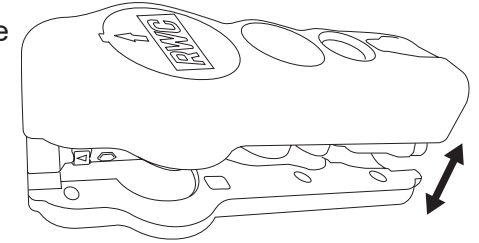


All dimensions in mm unless otherwise stated

Installing an optional water meter cartridge

If required a water meter cartridge can be installed into the water meter connection port of the Tenant Valve Plus.

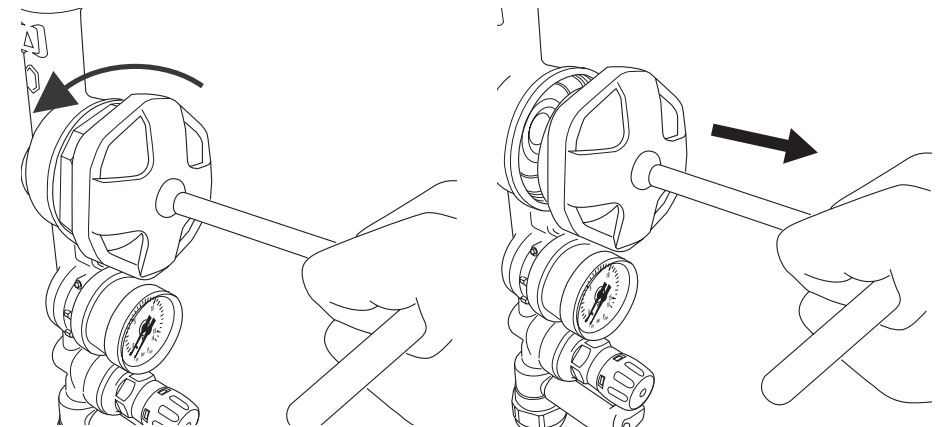
1. Remove the insulation from the Tenant Valve Plus by splitting the top half from the bottom.



2. Close the integral isolating ball valve and relieve the downstream pressure by opening a tap.

Note: The integral double check valve assembly will prevent any residual downstream water backflowing when the cap is removed.

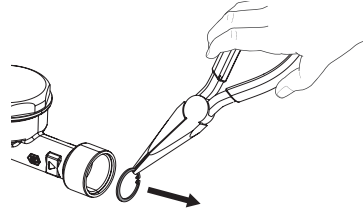
3. Using a large adjustable spanner or the blanking cap removal tool (available separately), remove the plastic blanking cap from the water meter connection port.



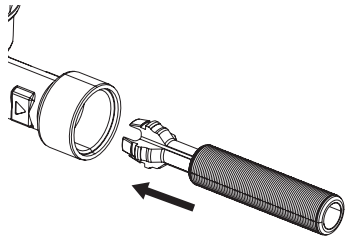
Replacing the check valves:

In the Tenant Valve Plus there are two check valves in parallel on the downstream side of the water meter connection port. If the check valve cartridges are damaged in service they must be removed and replaced.

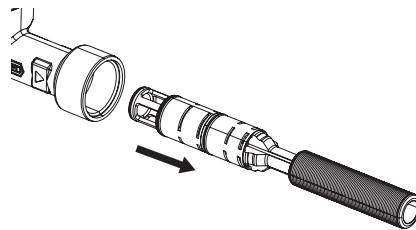
1. To replace the check valves, firstly release the circlip using a pair of long nose pliers.



2. Insert the maintenance key, supplied with the new check valve cartridges, until it snaps into the check valve.



3. Pull the check valve out of the valve and replace for new.



Installation

This installation guide is provided to give instruction on the best installation practices that should be observed to ensure the correct functioning of the Tenant Valve Plus. Failure to comply with these instructions will result in the warranty becoming null and void.

Before installation of the Tenant Valve Plus ensure that the designation of the valve matches the application. The operating parameters must be within the limits stated, the system flushed free of debris and suitable access available to allow for maintenance of the pressure reducing valve and the fitting of a water meter cartridge.

The Tenant Valve Plus is WRAS approved as an above ground stop valve so there is no requirement to install an additional isolation valve prior to the valve assembly. The double check valve housing at the other end means there is no requirement for isolation valves after the assembly and all maintenance can be carried out without the need for draining down the system.

Please ensure, you do not put the valve under any undue stress in the pipework, it should be installed in a frost protected location with easy access.

The Tenant Valve Plus can be installed in any orientation as long as the flow is in the correct direction, as indicated by the arrows on the body of the valve. Use suitable connections in the inlet and outlet ports of the valve so they are water tight.

The minimum pipe length downstream of the pressure reducing valve, before any elbow is fitted must be no less than 5 times the pipework size. Eg. DN25 would equal 5" distance. This is to protect against noise and to ensure a laminar flow.

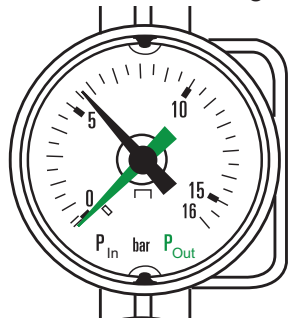
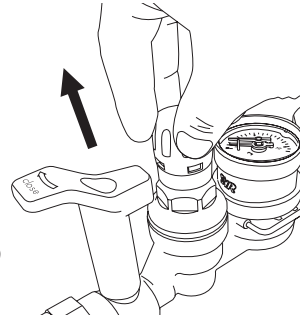
Note: Any use of jointing compound is not recommended as any residue material not thoroughly flushed out of the system could cause the product to malfunction and void the product warranty.

Commissioning

Please note: The valve should only be adjusted when under no flow conditions. Also ensure that the inlet pressure is at least one bar higher than the desired outlet pressure.

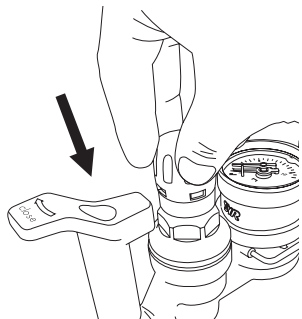
Adjusting the set pressure on the valve:

1. Pull the red adjustment knob upwards to unlock the pressure reducing cartridge.
2. Turn the adjustment knob anti-clockwise to decrease the outlet pressure down to it's minimum setting.

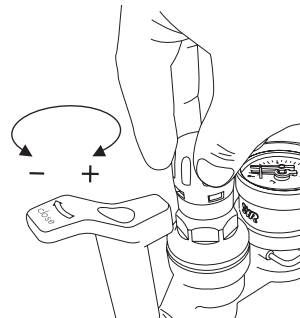


3. Open a tap downstream of the pressure reducing valve to relieve the excess pressure for a couple of seconds. The dual reading pressure gauge should now show the incoming pressure (black needle) and the reduced outlet pressure (green needle).

4. To increase the pressure turn the adjustment knob clockwise and watch the outlet pressure increase on the gauge.



5. When the desired outlet pressure is reached, push the knob downwards to lock it into place and set the pressure.

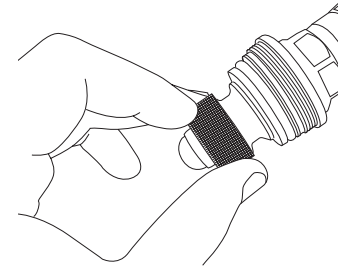


Maintenance

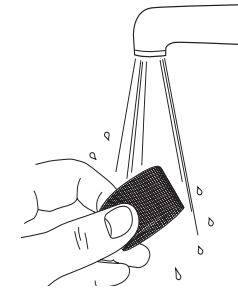
To service the integral strainer located at the base of the PRV cartridge:

1. Isolate the water supply using the integral isolation valve then open a tap downstream of the Tenant Valve Plus to relieve the excess pressure.

2. Use a spanner on the base of the cartridge to unscrew it. Once loose, you can remove the cartridge from the brass body.



3. The strainer can easily be removed by sliding it off the end of the cartridge.



4. Rinse the strainer under clean running water, until any debris has been washed away.

5. Replace the strainer onto the end of the cartridge.

6. Re-insert the pressure reducing valve cartridge into the brass body.

7. Using a spanner, screw the cartridge back into the valve body.

Please note: The set outlet pressure is not altered by this operation.